

Grantsmanship Training Workshop Offered by NLCAHR

Following the success of its 2005 workshop, NLCAHR is pleased to offer a second two-day session for applied health researchers who are interested in improving their grant-writing skills.

The workshop is tentatively planned for November 15 & 16 2006 in St. John's. For more information, or to register, contact NLCAHR: nlcahr@mun.ca

New CEO Named For the Centre for Health Information

Mr. Michael Barron has been named as the new CEO for the Newfoundland and Labrador Centre for Health Information (NLCHI).

Mr. Barron has 23 years experience in health information management, including six years as the director of the Health Information Network and eight years as Director of Information Systems for the General Hospital Corporation.

He replaces Mr. Steve O'Reilly, who, in addition to serving NLCHI as CEO since 1997 was a valued member of the NLCAHR Board of Directors. Mr. O'Reilly is now Executive Director for Atlantic Canada with the Canadian Institute for Health Information (CIHI).

NLCAHR Honours 2006 Fellowship and Research Grant Recipients

On June 27, 2006, four Newfoundland and Labrador-based health researchers and six graduate students were honoured as recipients of funding from the Newfoundland and Labrador Centre for Applied Health Research. The winners, from a variety of disciplines including Community Health, Physiotherapy, Psychology, and Human Kinetics and Recreation, will use their awards to carry out research and studies on health issues affecting our province.

The awards, totaling more than \$267 000 over three years, were presented by Mr. John Abbott, Deputy Minister, Department of Health and Community Services, Dr. James Rourke, Dean of the Faculty of Medicine at Memorial, and Dr. Stephen Bornstein, Director of NLCAHR.

NLCAHR awards are designed to increase the capacity of researchers in Newfoundland and Labrador to carry out high-quality research on health matters that are relevant to public policy and clinical decision-making and to increase the amount of high-quality applied health research undertaken on priority issues for the province's health system and for the health and well-being of its population.



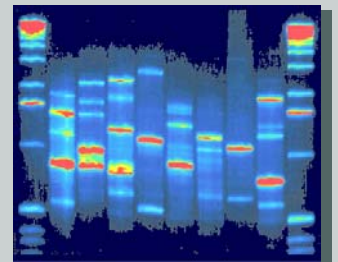
Left to right: Dr. Stephen Bornstein, Dr. James Rourke, Ms. Michelle Ploughman, Ms. Stacey Wareham, Ms. Kelly Warren, Ms. Duyen Nguyen, Ms. Roxanna Vernescu, Dr. Diana Gustafson, Dr. Andria Jones, Ms. Rosemary Lever, Mr. John Abbott, Dr. Fabien Basset. Missing from photo: Ms. Kelly Butt.

Symposium on Innovations in Genetics and Genomics Research to Be Held in St. John's

On October 19, 2006 the Newfoundland & Labrador Centre for Applied Health Research will host a day of presentations and discussion on emerging issues in genomics and genetics research and the impact of this research on decision making in health policy and health services.

Experts from Memorial University and from other Canadian, American and European universities will come together to discuss topics such as Population Architecture and Genetics Research, Gene Discovery Research in Founder Populations, Clinical Applications of New Genetics and Genomics Research, and Ethical Challenges at the Interface of Genetics Research and Clinical Practice.

The symposium will welcome a number of national and international genetics experts including: Prof. Tim Caulfield, University of Alberta; Dr. Albert de la Chapelle, Ohio State University; Dr. Jorunn Eyfjord, University of Iceland; Dr. Rod McInnes, Scientific Director, Institute of Genetics, CIHR; and Dr. Ken Morgan, McGill University.



To attend in this symposium, contact NLCAHR before September 25: nlcahr@mun.ca or 709.777.6993.

Newfoundland and Labrador
Centre for Applied Health
Research

95 Bonaventure Avenue
Suite 300
St. John's, NL CANADA A1B 2X5

NLCAHR Seeks Your Feedback on Our Communications Activities

What health research information is important to you? How can we help provide the information you need to conduct and use applied health research?

Since 2003, NLCAHR has been implementing a comprehensive communications strategy to improve our communications with researchers, policy-makers, clinicians, students and the broader community. Now we are assessing our efforts through an on-line survey.

Results of the survey will be used to improve our communications activities in the coming months and years. The survey takes approximately five minutes, and your feedback would be appreciated.

To participate in the survey, please go to
www.nlcahr.mun.ca/survey.php

Editor: T. Mackenzie
E-mail: tmackenz@mun.ca
Tel: 709.777.7973

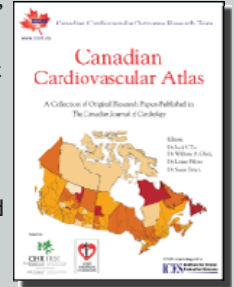
Subscriptions: nlcahr@mun.ca;
www.nlcahr.mun.ca

www.nlcahr.mun.ca

Research Highlights

Canadian Cardiovascular Atlas Released

A Research Team known as the Canadian Cardiovascular Outcomes Research Team (CCORT) has produced the Canadian Cardiovascular Atlas, which highlights regional variations on the burden, risk factors, treatments, and outcomes of heart disease for Canadians. The atlas provides extensive data from health regions throughout the country including those in Newfoundland and Labrador; it provides data on percentages of the population with cardiovascular disease risk factors, self-reported prevalence of heart disease, hospitalization, re-hospitalization and mortality rates, and treatment procedures and rates. In addition to the findings, recommendations for future research and for improvements in care are offered. A version of the Atlas with Newfoundland and Labrador information highlighted is available on the NLCAHR website. The Atlas and supplementary materials are also available directly from CCORT.



Details: www.nlcahr.mun.ca/news/documents/reports; www.ccort.ca/atlas.asp

Study Examines Provincial and National Retention of Medical Graduates from Memorial

Of the more than 1300 physicians Memorial University has trained since its medical school was founded in 1967, 30.7% were working in Newfoundland and Labrador and 56.1% were working elsewhere in Canada in 2004. Newfoundland and Labrador, along with several other provinces, experienced a net loss of physicians between the years 2000 and 2004. A recent study by Dr. Maria Mathews, Dr. James Rourke and Ms. Amanda Park examined some of the factors that might predict national and provincial retention of Memorial's medical school graduates.

The study, which was published in the August 15, 2006 edition of the Canadian Medical Association Journal, determined that MUN medical graduates with a rural background, who were from Newfoundland and Labrador, and who had completed some or all of their medical residency in this province were more likely to work in Newfoundland and Labrador. While more than half of the province's doctors who were working in Newfoundland and Labrador in 2004 were trained by Memorial University's medical school, the study suggests that retention may be improved through efforts to attract more rural and local students and by encouraging more students to complete their residency training in Newfoundland and Labrador.

Details: www.cmaj.ca/cgi/content/full/175/4/357

Notebook

Research Affinity Group...

The Research Affinity Group on Women's Health/ Gender and Health will meet on November 8, 2006.

The purpose of this group is to facilitate networking among researchers, graduate students, and policy makers who are interested in this area of health research. The group meets twice a year to exchange information and ideas about research projects and proposals, potential sources of funding, and opportunities for training and knowledge exchange.

New members are welcome. For details, contact amcgrath@mun.ca.

NLCAHR Recommends...

Evidence in Action, Acting on Evidence: A Casebook of Health Services and Policy Research Knowledge Translation Stories. CIHR Institute of Health Services and Policy Research. 2006.

Moving Population and Public Health Knowledge Into Action: A casebook of knowledge translation stories. Canadian Population Health Initiative, CIHR Institute of Population and Public Health. 2006.

Science and the Public Interest: Communicating the Results of New Scientific Research to the Public. The Royal Society. 2006

Details on all three reports:
www.nlcahr.mun.ca/news/documents/reports

Grants, Fellowships and Conference Opportunities

For up-to-date information on funding and other opportunities, see the NLCAHR website: www.nlcahr.mun.ca

Post your notices here...

Send your health research-related notices for inclusion in our quarterly newsletter.

Our next newsletter: January 2007.
Submissions by December 15th to nlcahr@mun.ca