

2006

RÉGIE  
DES RENTES  
DU QUÉBEC

# Supplement for Handicapped Children

## Child assistance

Financial assistance for children with an impairment  
or developmental disorder



Québec 



**This publication does not have force of law.**

In cases of conflicting interpretation, the *Taxation Act* (division II.11.2) and the sections of the *Regulation respecting the Taxation Act* pertaining to the supplement for handicapped children prevail over the contents of this publication.

---



### **Large print**

A large print version and a Braille version are also available. To order a copy, call **1 800 463-5185**.

---



### **Audiocassettes**

To obtain an audiocassette, contact the Magnétothèque at **1 800 361-0635**.

---



All the Régie's services are free of charge.

*Version originale française disponible sur demande.*

Legal deposit: Third quarter 2006  
Bibliothèque nationale du Québec  
ISBN2-550-47321-3  
2-550-47322-1 (PDF)

# Table of Contents

|   |           |
|---|-----------|
| <b>Supplement for Handicapped Children</b>                      | <b>4</b>  |
| You are entitled to a supplement for handicapped children if... | 5         |
| How we establish whether a child's handicap is serious          | 6         |
| To file an application...                                       | 9         |
| <b>Payment</b>  | <b>11</b> |
| Amount  | 11        |
| Payment dates   | 11        |
| Payment method  | 12        |
| End of payment  | 13        |
| If you disagree with a decision...                              | 13        |
| <b>Your satisfaction is our priority!</b>                       | <b>14</b> |
| <i>Service Statement</i>  | 14        |
| Services Commissioner   | 15        |

# Supplement for Handicapped Children

The child assistance measure administered by the Régie des rentes du Québec provides for the payment of a supplement for handicapped children.

The purpose of the supplement for handicapped children is to help families raise, care for and educate a handicapped child. **The handicap must be serious.**

As of January 2006, the non-refundable tax credit for dependent children with an impairment **was replaced** by an increase in the amount of the supplement for handicapped children. Since the non-refundable tax credit benefited only those families who had to pay income tax, **this increase in the supplement benefits all families entitled to the supplement.**

As a result, the tax relief provided for handicapped children is uniform for all families and access to the assistance is simpler.

## You are entitled to a supplement for handicapped children if...

- ▶ You take care of the child, the child is living with you and the child is under 18;
- ▶ You are residing in Québec and you or your spouse is:
  - a Canadian citizen
  - a permanent resident\*;
  - a temporary resident, who has lived in Canada for at least 18 months\*;
  - a protected person (refugee)\*.
- ▶ The child has a **physical or mental handicap** that **significantly limits** him or her in carrying out daily activities for a period expected to last **for at least one year**.

### What are daily activities?

Daily activities are the activities in which a child participates, depending on his or her age, with respect to personal care and social life. They include eating and getting dressed, moving about, communication and learning activities.

\* Under the *Immigration and Refugee Protection Act*.

## How we establish whether a child's handicap is serious

The seriousness of the handicap is established by the medical advisers at the Régie des rentes du Québec, in accordance with the criteria defined in the *Regulation respecting the Taxation Act* pertaining to the supplement for handicapped children. Schedule C.1 of the *Regulation* specifies the eligibility requirements for the following handicaps:

### Impairments

#### **Cardiovascular function**

#### **Congenital malformations and chromosomal abnormalities**

e.g. trisomy, multiple malformations

#### **Hearing**

#### **Immune system abnormalities**

e.g. immune deficiency, HIV infection, AIDS

#### **Metabolic or hereditary abnormalities**

e.g. anemia, insulin-dependent diabetes, cystic fibrosis, hemophilia

#### **Musculoskeletal system**

e.g. arthritis, malformation of one or several limbs, paralysis (brachial plexus, diplegia, quadriplegia), hypotonia

#### **Neoplasia**

e.g. leukemia, cancer

#### **Nervous system abnormalities**

e.g. epilepsy, Tourette's disorder, cranial trauma

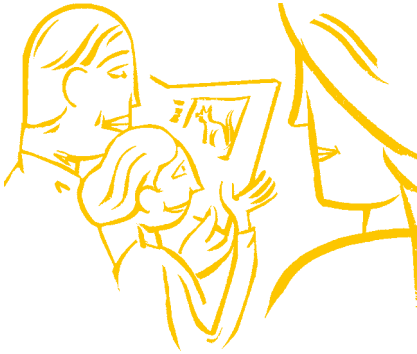
#### **Nutrition and digestion**

#### **Renal and urinary functions**

#### **Respiratory function**

e.g. severe asthma

#### **Sight**



## Developmental disorders

### **Behavioural disorders**

e.g. attention deficit disorder, oppositional defiant disorder, disturbance of conduct, psychoses, bipolar disease and other psychological or psychiatric diseases

### **Language disorders**

e.g. dysphasia, dyspraxia

### **Intellectual impairment**

e.g. mental retardation

### **Pervasive developmental disorders**

e.g. autism, Asperger's syndrome

### **Psychomotor delay**

e.g. global developmental delay

To obtain more information about the eligibility requirements for each type of handicap, see our Web site at [www.rrq.gouv.qc.ca](http://www.rrq.gouv.qc.ca) or call us.

If a child's situation does not correspond to the cases described in Schedule C.1 of the *Regulation*, the seriousness of the handicap is assessed according to the following three criteria:

---

**1 Incapacities that remain, even though available measures to make the child's life easier are used.**

For example:

- ▶ The child continues to have serious visual difficulties even though he or she wears corrective lenses.
- 

**2 The obstacles the child encounters in his or her environment.**

For example:

- ▶ The child needs a special layout at home, daycare or school (e.g.: the stairs have to be adapted);
  - ▶ The child uses a wheelchair or walker.
- 

**3 The constraints for the child's family.**

For example:

- ▶ You often have to accompany the child for treatments;
- ▶ The child cannot attend daycare or school without being accompanied;
- ▶ Despite the child's age, he or she must always be supervised;
- ▶ You must provide exceptional assistance to dress, feed or wash the child.

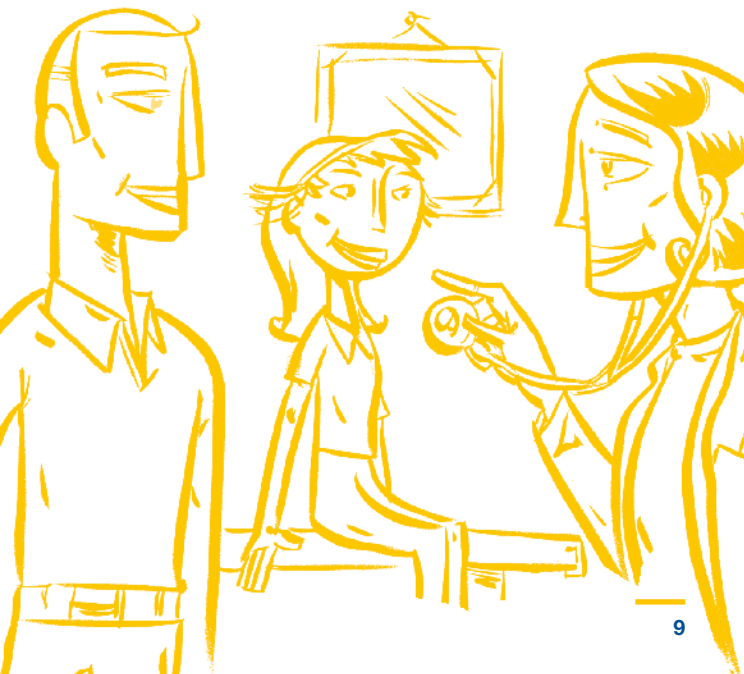


## To file an application...

You must complete the Application for a Supplement for Handicapped Children and send it to us. Be sure to provide the documents requested.

Part of the form must be completed by the health professional who assessed or treats the child (physician, physical therapist, psychologist, other) and is most familiar with the child's condition. Furthermore, you and your spouse must also file a Québec income tax return every year, even if you have no income to report. New arrivals in Québec may be required to provide a breakdown of income, or a Notice of Assessment issued by the Canada Revenue Agency, if they have not filed a Québec income tax return.

The application form is available on our Web site, at our client service centres and at CLSCs.



## Our commitment

In its *Service Statement*, the Régie has committed itself to replying within a maximum of 115 days, provided the medical information initially received is sufficient for it to assess the handicap and render a decision. We cannot begin processing your application until we have in hand your application form and the section of the form completed by the health professional. We meet this commitment in 99% of cases. For information about our other commitments and our results, see the *Service Statement* on our Web site.

# Payment

## Amount

In January 2006, the non-refundable tax credit for dependent children with an impairment was replaced by an increase of 37,50 \$ a month in the supplement for handicapped children.

The supplement is now **161,50 \$ a month**, regardless of the handicap or family income. The amount is indexed at the beginning of each year.

**Note!** The supplement can be paid retroactively for a maximum of 11 months before you filed an application, if your child met the eligibility requirements during that period.

## Payment dates

The supplement is paid every 3 months, in January, April, July and October. Payments are made on the first working day of those months. If you would prefer to receive your payment every month, you must apply (see our on-line services: "Change in Frequency of Child Assistance Payments"), or call us.

# Payment method

Payment can be made by cheque or by direct deposit. To sign up for direct deposit, use our on-line services at [www.rrq.gouv.qc.ca](http://www.rrq.gouv.qc.ca) under the heading "Direct Deposit in Canada" or call us.

 **Direct**  
*Deposit*

## End of payment

The supplement for handicapped children ends when your child turns 18 or before if the child's condition improves to the point that he or she no longer meets the eligibility requirements set out in the *Regulation*.

To verify if your child still meets the eligibility requirements, the Régie may, in some cases, ask for a reassessment. The frequency of reassessments depends on the child's handicap and situation.

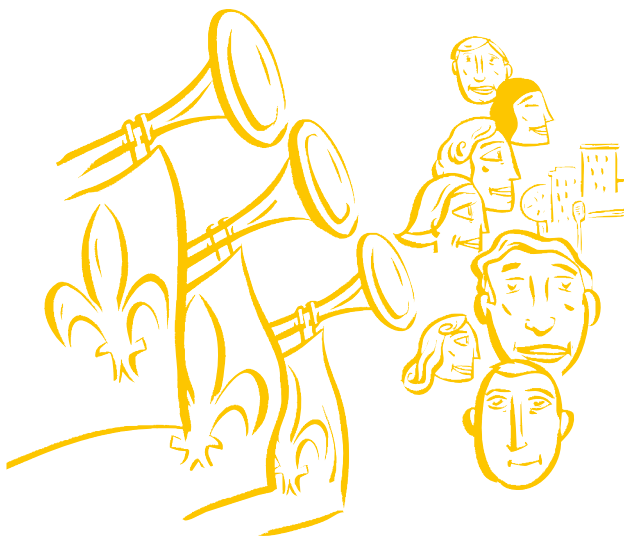
## If you disagree with a decision...

If you disagree with a decision or would like more information, call us.

You can ask the Régie to review any decision it renders regarding your child's eligibility for a supplement for handicapped children. You have 90 days from the date you were informed of the decision to appeal.

The Régie will inform you in writing of its new decision. If you do not agree with the new decision, you have 60 days to appeal the decision to the Administrative Tribunal of Québec.

# Your satisfaction is our priority!



## ***Service Statement***

The Régie des rentes du Québec has made commitments to provide the public with: reliable service, simple procedures, courteous and personalized service, adequate information about your rights and responsibilities, efficient management, competent employees and accessible and rapid services.

You can obtain a copy of the *Service Statement* on our Web site, at our client service centres or at the office of your member of the National Assembly.

## **Services Commissioner**

If you believe your situation has not received all the attention it deserves, you can contact the Services Commissioner, who will treat your complaints and comments completely independently. The Commissioner has the power to make recommendations to facilitate the resolution of disputes and improve client service. Complaints are kept strictly confidential and there is no need to fear personal repercussions.

You can contact the office of the Services Commissioner by Internet or by mail. You can also call the Régie (see the back cover of this brochure).

# How to reach us

For more information about the supplement for handicapped children:



## By Internet

[www.rrq.gouv.qc.ca](http://www.rrq.gouv.qc.ca)

**RégieNet**

*On-line services*



## By telephone

Monday to Friday (8:00 am to 5:00 pm)

Québec region: **418 643-3381**

Montréal region: **514 864-3873**

Toll-free: **1 888 667-9625**



## By TTY

Deaf and hard of hearing

Toll-free: **1 800 603-3540**



## By mail

Régie des rentes du Québec

Case postale 7777

Québec (Québec) G1K 7T4



## In person

At one of our client service centres. Call us before coming to the office. In most cases, you can obtain the information you need by telephone.

**Régie des rentes**

**Québec**

