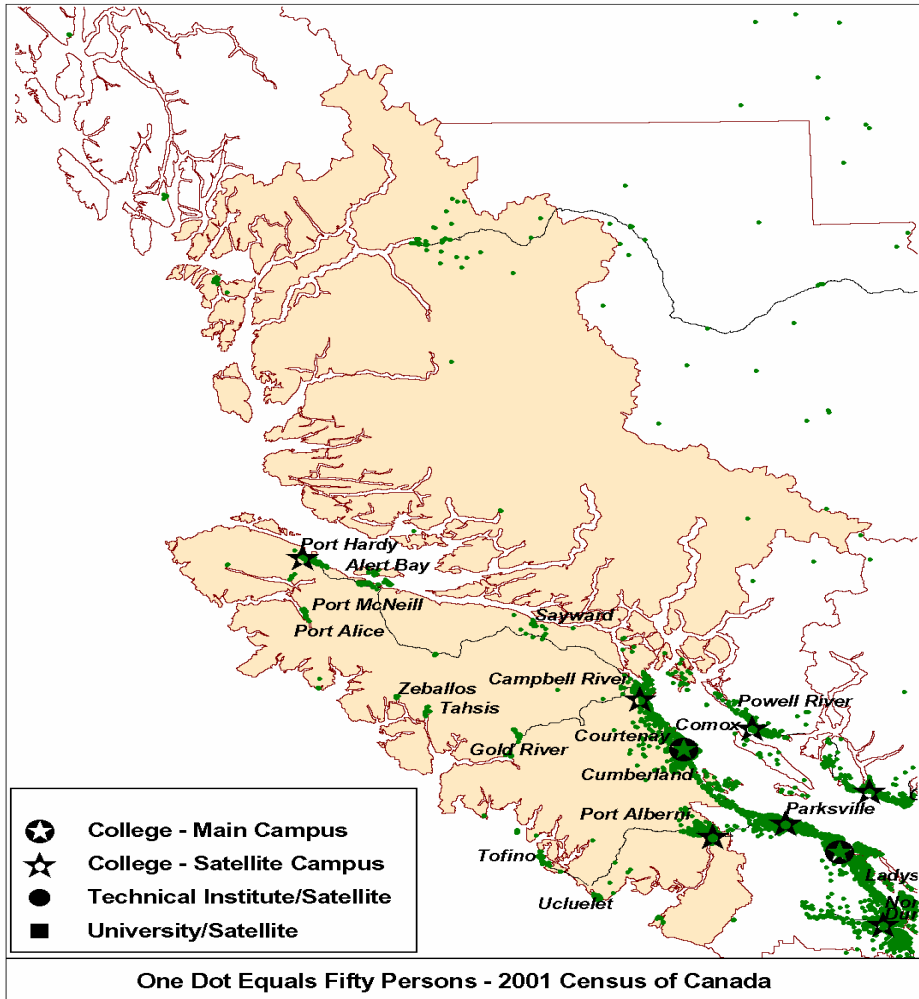


British Columbia: Regional Employment Projection Model

INDUSTRY AND OCCUPATION PROJECTIONS: 2006 -- 2010

NORTH ISLAND COLLEGE REGION



Background Information on Geographic Location of Population

Major Cities	Population <u>2005</u>	% of <u>Region</u>	Land <u>Area</u> <i>Sq Km</i>	Population <u>Density</u> <i>Persons per Sq Km</i>
Campbell River	30,810	19.8	133.3	231.1
Courtenay	21,801	14.0	17.0	1280.9
Port Alberni	18,688	12.0	19.9	940.5
Comox	12,835	8.2	14.2	903.9
Port Hardy	4,597	3.0	40.9	112.5
Port McNeill	2,928	1.9	7.7	378.3
Cumberland	2,817	1.8	7.7	364.0
Ucluelet	1,900	1.2	6.6	290.1
Tofino	1,846	1.2	10.6	173.5
Gold River	1,357	0.9	10.5	129.1
Port Alice	1,128	0.7	7.7	147.3
Alert Bay	607	0.4	1.8	333.5
Tahsis	577	0.4	5.7	100.7
Sayward	407	0.3	4.7	86.2
Zeballos	228	0.1	1.5	157.2
Rest of Region	53,122	34.1	70879.9	0.7
Total Region	155,648	100.0	71169.8	2.2
Region as % of BC	3.7		7.7	
Youth Age 15-29	32,259			
Youth in Region as % of BC	3.7			

Note to Users

All assumptions relating to employment are based on past conditions, modified wherever possible to take into consideration future changes. Consequently, the resulting employment projections are not necessarily what will be, but rather what could be, given the realization of these conditions. It is certainly possible that unforeseen changes in factors such as economic development, government policy, land use and zoning will affect future employment. Consequently, the projections should only be regarded as one possible scenario on the future size and distribution of the workforce.

Regional Employment Projection Model (REPM)

BC STATS is grateful for the support and financial assistance from the Ministry of Advanced Education in developing the model.

Contents

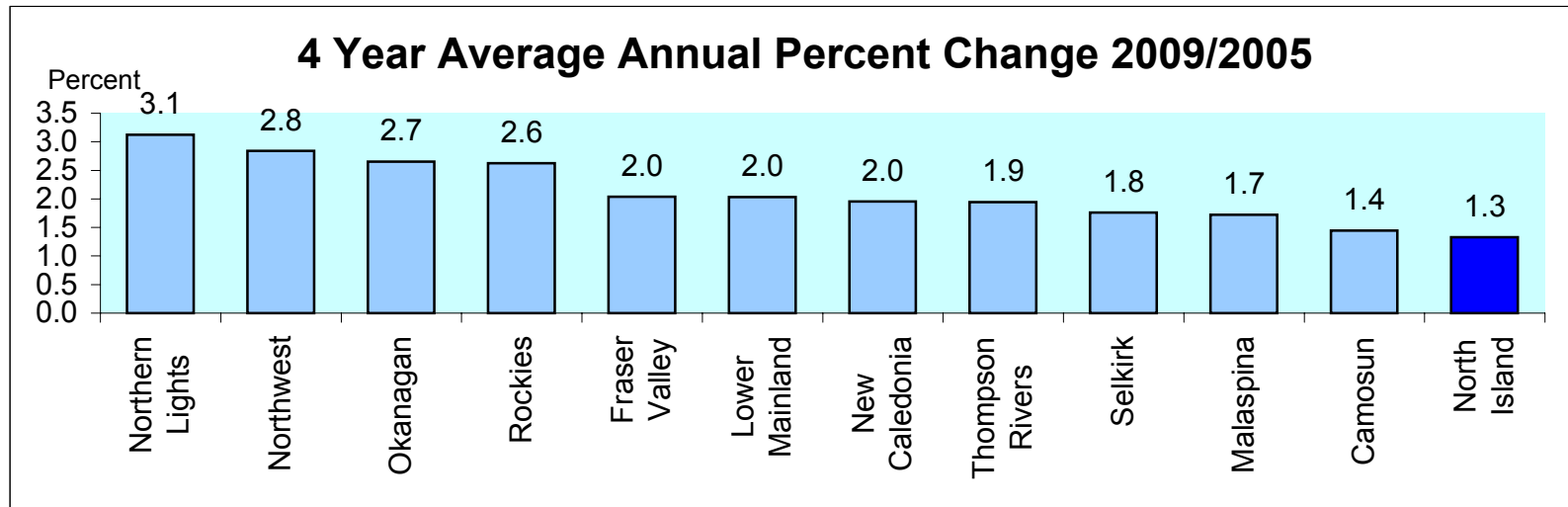
1. Projected Annual Growth in Employment Demand by College Region
2. Industrial Structure in the College Region Compared with BC, 2005 and 2009
3. Projected Annual Growth in Employment Demand by Industry
4. Occupational Structure in the College Region Compared with BC, 2005 and 2009
5. Projected Annual Growth Rates in Occupational Demand (1-digit)
6. Projected Annual Growth Rates in Occupational Demand (2-digits)

Appendices

1. Methodology
2. COPS Industry Conversion to REPM
3. Regional District to College Region Conversion for REPM
4. Projected Annual Growth Rates in Occupational Demand (3-digit)
5. Projected Annual Growth Rates in Occupational Demand (4-digit)

Projected Annual Growth in Employment Demand by College Region

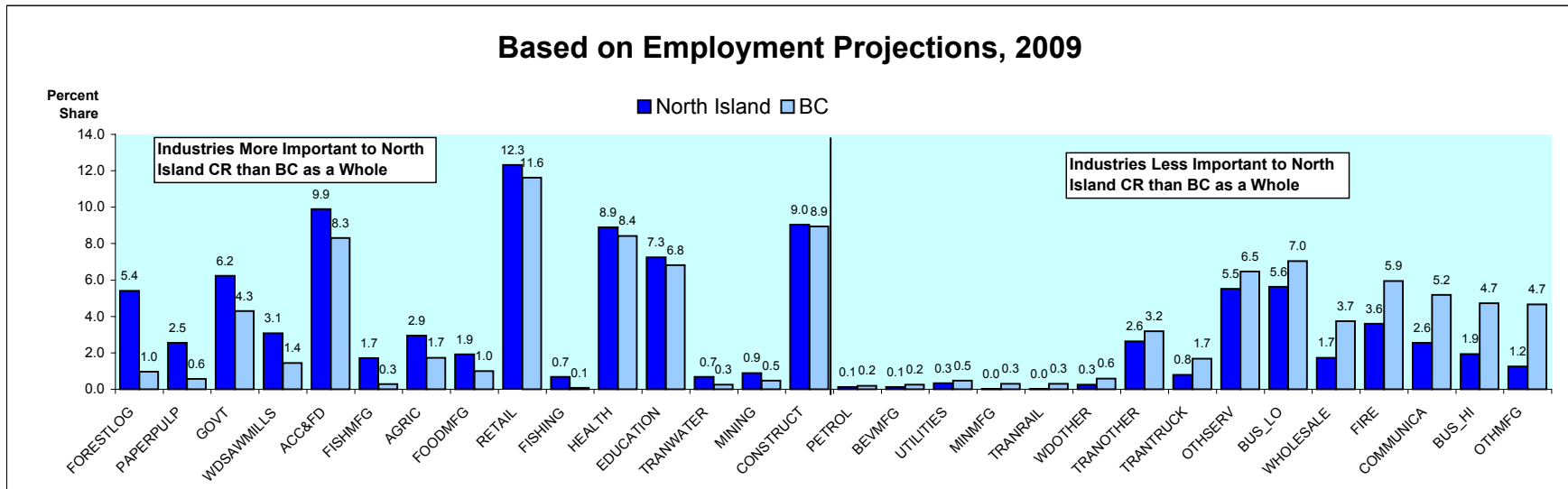
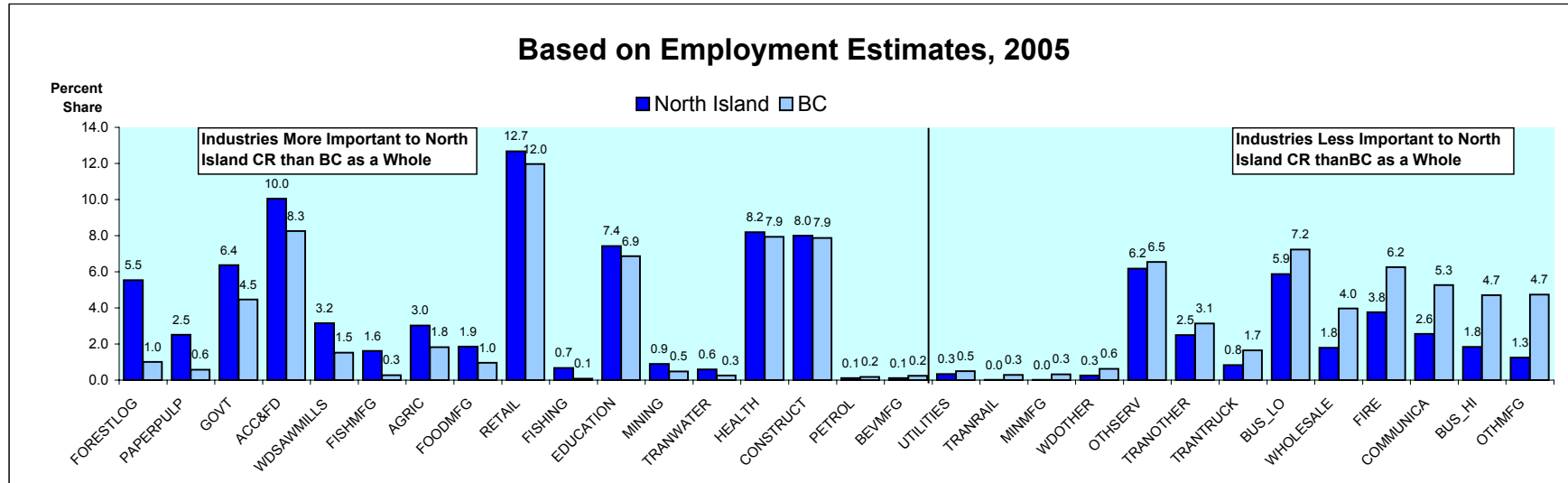
	Estimated Employment	Projected Employment Levels		Average Annual % Chg			Avg Annual % Chg Over 4 Years
	<u>2005</u>	<u>2009</u>	<u>2010</u>	<u>2007/2005</u>	<u>2009/2007</u>	<u>2010/2009</u>	<u>2009/2005</u>
	Northern Lights	34,708	39,046	39,220	3.1	2.9	0.4
Northwest	34,597	38,531	39,845	2.3	3.2	3.4	2.8
Okanagan	175,281	193,888	201,600	2.3	2.9	4.0	2.7
Rockies	37,929	41,910	43,335	2.3	2.8	3.4	2.6
Fraser Valley	120,271	130,067	133,725	1.8	2.2	2.8	2.0
Lower Mainland	1,182,258	1,278,495	1,327,306	2.1	1.9	3.8	2.0
New Caledonia	75,311	81,207	83,482	1.8	2.0	2.8	2.0
Thompson Rivers	85,651	92,310	94,914	1.8	2.0	2.8	1.9
Selkirk	36,829	39,421	40,304	1.5	2.0	2.2	1.8
Malaspina	109,580	117,129	120,067	1.4	2.0	2.5	1.7
Camosun	167,460	177,149	181,894	1.3	1.6	2.7	1.4
North Island	70,227	73,956	75,509	1.2	1.4	2.1	1.3
Total	2,130,101	2,303,108	2,381,200	2.0	2.0	3.4	2.0



Industrial Structure in the North Island College Region Compared with BC

Percent Share of Employment by Industry

Ranked by the Percentage Point Difference in the Industry Share in the College Region Compared with BC



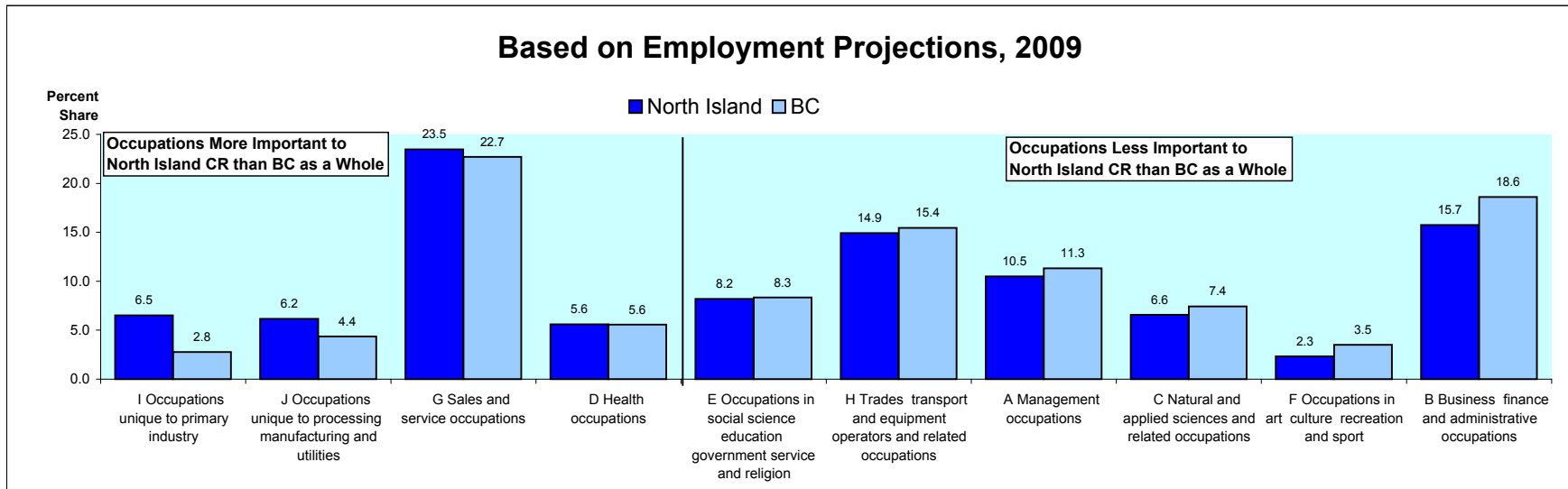
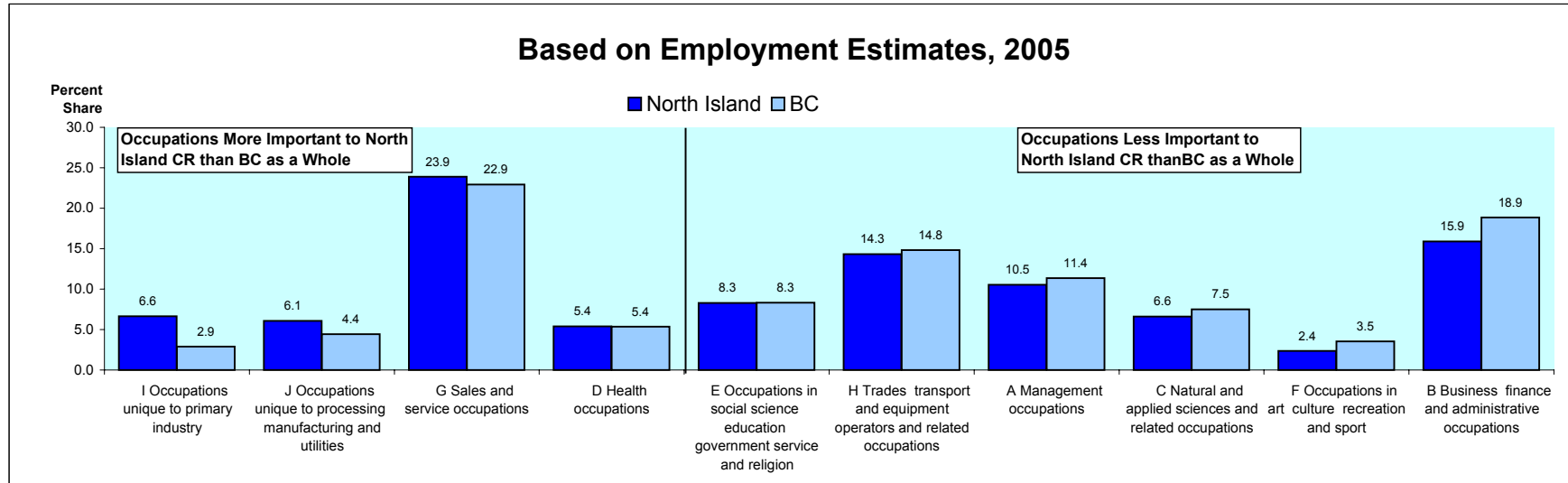
North Island College Region

	Estimated	Projected		Average Annual % Chg			Chg Over 4
	Employment	Employment Levels					Years
	<u>2005</u>	<u>2009</u>	<u>2010</u>	<u>2007/2005</u>	<u>2009/2007</u>	<u>2010/2009</u>	<u>2009/2005</u>
ACC&FD	7,052	7,312	7,642	0.5	1.3	4.5	0.9
AGRIC	2,123	2,177	2,272	0.9	0.4	4.4	0.6
BEVMFG	80	89	90	4.0	1.7	1.0	2.9
BUS_HI	1,288	1,430	1,460	1.8	3.6	2.1	2.8
BUS_LO	4,119	4,166	4,239	0.4	0.2	1.7	0.3
COMMUNICA	1,798	1,888	1,905	1.3	1.2	0.9	1.3
CONSTRUCT	5,618	6,688	6,253	2.2	7.0	-6.5	4.8
EDUCATION	5,214	5,363	5,376	1.0	0.4	0.3	0.7
FIRE	2,637	2,656	2,763	0.6	-0.2	4.0	0.2
FISHING	475	504	540	1.6	1.4	7.1	1.5
FISHMFG	1,135	1,268	1,280	4.0	1.7	1.0	2.9
FOODMFG	1,303	1,415	1,431	2.6	1.6	1.1	2.1
FORESTLOG	3,883	3,993	3,958	1.8	-0.4	-0.9	0.7
GOVT	4,472	4,603	4,636	0.7	0.8	0.7	0.7
HEALTH	5,751	6,573	6,841	3.5	3.4	4.1	3.6
MINING	631	653	668	0.9	0.8	2.3	0.9
MINMFG	12	12	12	0.5	0.1	0.2	0.3
OTHMFG	878	924	993	0.9	1.7	7.4	1.3
OTHSERV	4,333	4,077	4,264	-1.8	-1.2	4.6	-1.5
PAPERPULP	1,761	1,885	1,895	2.2	1.2	0.5	1.8
PETROL	77	94	88	6.1	3.9	-6.3	5.2
PETROLMFG	-	-	-	-	-	-	-
RETAIL	8,904	9,117	9,600	0.9	0.3	5.3	0.6
TRANOTHER	1,755	1,941	1,979	2.7	2.5	1.9	2.7
TRANRAIL	-	-	-	-	-	-	-
TRANTRUCK	587	584	589	-1.0	0.8	0.9	-0.1
TRANWATER	420	505	519	6.4	3.4	2.7	5.1
UTILITIES	234	243	247	1.3	0.7	1.7	1.0
WDOTHER	184	188	198	0.4	0.8	5.2	0.6
WDSAWMILLS	2,216	2,270	2,388	0.4	0.8	5.2	0.6
WHOLESALE	1,255	1,274	1,317	-0.1	0.8	3.4	0.4
ALL INDUSTRIES	70,227	73,956	75,509	1.2	1.4	2.1	1.3

Occupational Structure in the North Island College Region Compared with BC

Percent Share of Employment by Occupation

Ranked by the Percentage Point Difference in the Occupation Share in the College Region Compared with BC



North Island College Region

Projected Annual Growth Rates in Occupational Demand

	Estimated Employment	Average Annual % Change			Avg Annual % Chg Over 4 Years
	<u>2005</u>	<u>2007/2005</u>	<u>2009/2007</u>	<u>2010/2009</u>	<u>2009/2005</u>
All occupations	70,227	1.2	1.4	2.1	1.3
A Management occupations	7,397	1.0	1.4	2.3	1.2
B Business finance and administrative occupations	11,152	1.1	1.1	2.1	1.1
C Natural and applied sciences and related occupations	4,635	1.3	1.2	1.2	1.3
D Health occupations	3,777	2.3	2.4	4.1	2.4
E Occupations in social science education government service and religion	5,815	1.2	1.0	1.6	1.1
F Occupations in art culture recreation and sport	1,658	1.0	0.9	1.5	1.0
G Sales and service occupations	16,790	0.8	0.9	4.0	0.8
H Trades transport and equipment operators and related occupations	10,065	1.5	3.2	-1.3	2.4
I Occupations unique to primary industry	4,662	1.3	0.3	2.2	0.8
J Occupations unique to processing manufacturing and utilities	4,274	1.9	1.3	2.6	1.6

Projected Annual Growth Rates in Occupational Demand (2-digits)

North Island College Region

Projected Annual Growth Rates in Occupational Demand

	Estimated Employment	Average Annual % Change			Avg Annual % Chg Over 4 Years
	<u>2005</u>	<u>2007/2005</u>	<u>2009/2007</u>	<u>2010/2009</u>	<u>2009/2005</u>
All occupations	70,227	1.2	1.4	2.1	1.3
A2 Managers in retail trade food and accommodation services	824	1.0	1.3	1.6	1.2
A3 Other managers n.e.c.	1,378	1.1	1.1	2.1	1.1
B0 Professional occupations in business and finance	2,844	0.7	0.7	4.7	0.7
B1 Finance and insurance administration occupations	2,349	1.5	2.3	-0.2	1.9
B2 Secretaries	1,757	0.8	0.7	2.3	0.8
B3 Administrative and regulatory occupations	1,068	1.0	1.1	1.8	1.0
B4 Clerical supervisors	1,468	1.2	1.4	1.5	1.3
B5 Clerical occupations	1,205	1.1	1.4	1.6	1.3
C0 Professional occupations in natural and applied sciences	238	1.2	1.0	2.4	1.1
C1 Technical occupations related to natural and applied sciences	5,415	1.2	1.1	2.4	1.1
D0 Professional occupations in health	2,415	1.1	1.1	1.4	1.1
D1 Nurse supervisors and registered nurses	2,220	1.5	1.3	1.0	1.4
D2 Technical and related occupations in health	877	2.2	2.2	4.1	2.3
D3 Assisting occupations in support of health services	997	2.5	2.6	4.1	2.6
E0 Judges, lawyers, psychologists, social workers, ministers of religion & policy/program officers	946	2.1	2.2	3.9	2.2
E1 Teachers and professors	956	2.3	2.4	4.2	2.4
E2 Paralegals, social services workers & occup. in educ. & religion n.e.c.	1,511	0.9	1.1	2.4	1.0
F0 Professional occupations in art and culture	2,785	1.0	0.4	0.3	0.7
F1 Technical occupations in art, culture, recreation and sport	1,522	1.7	1.7	3.1	1.7
G0 Sales and service supervisors	688	1.0	0.8	1.2	0.9
G1 Wholesale, technical, insurance, real estate sales specialists & retail, wholesale and grain buyers	968	1.0	1.0	1.8	1.0
G2 Retail salespersons and sales clerks	500	0.9	0.9	4.4	0.9
G3 Cashiers	895	0.8	0.8	3.1	0.8
G4 Chefs and cooks	2,852	0.9	0.4	4.9	0.7
G5 Occupations in food and beverage service	1,326	0.9	0.5	4.9	0.7

North Island College Region

Projected Annual Growth Rates in Occupational Demand

	Estimated Employment	Average Annual % Change			Avg Annual % Chg Over 4 Years
	<u>2005</u>	<u>2007/2005</u>	<u>2009/2007</u>	<u>2010/2009</u>	<u>2009/2005</u>
G6 Occupations in protective services	1,384	0.7	1.4	4.3	1.0
G7 Occup. in travel & accommodation incl. attendants in recreation & sport	1,733	0.6	1.3	4.4	0.9
G8 Childcare and home support workers	898	0.8	0.8	1.1	0.8
G9 Sales and service occupations n.e.c.	587	1.7	1.8	2.8	1.8
H0 Contractors and supervisors in trades and transportation	1,392	1.0	1.1	2.9	1.1
H1 Construction trades	5,225	0.6	0.8	4.1	0.7
H2 Stationary engineers, power stn operators & electrical trades & telecom.	530	1.8	4.8	-3.5	3.4
H3 Machinists, metal forming, shaping and erecting occupations	2,269	2.1	6.1	-5.3	4.2
H4 Mechanics	798	1.8	3.7	-2.0	2.8
H5 Other trades n.e.c.	517	1.4	2.9	-0.1	2.1
H6 Heavy equipment and crane operators including drillers	1,658	0.6	0.8	2.3	0.7
H7 Transport equipment operators & related workers, excl. labourers	499	0.7	1.8	1.8	1.2
H8 Trades helpers, construction and transport labourers & related	644	1.8	3.5	-2.6	2.7
I0 Occupations unique to agriculture, excluding labourers	1,773	1.5	1.5	1.3	1.5
I1 Occup. unique to forestry ops, mining, oil & gas extraction, fishing excl. labourers	1,373	1.7	3.2	-0.9	2.5
I2 Primary production labourers	1,884	0.9	0.4	4.0	0.7
J0 Supervisors in manufacturing	1,767	1.7	0.2	1.2	1.0
J1 Machine operators in manufacturing	1,013	1.4	0.2	0.7	0.8
J2 Assemblers in manufacturing	337	1.9	1.3	2.5	1.6
J3 Labourers in processing, manufacturing and utilities	1,954	2.0	1.2	2.4	1.6

Appendix 1

Summary of Methodology for the British Columbia Regional Employment Projection Model (REPM)

The methodology used in the model has come largely from previous work on community dependencies carried out earlier by BC STATS. The fundamental premise is that the economy of a region can be represented by income flows that can be classified as “basic” (or driver) and “non-basic” (or support) depending on the source of the income.

The model calculates indirect employment effects from employment changes in the basic sectors using multipliers based in inter-industry linkages from the British Columbia Input-Output Model. Similarly, non-basic, or induced effects are calculated using an income-to-non-basic-jobs ratio.

The current version of the model is benchmarked to the 2001 Census employment by Regional District, and is projected forward up to the most up-to-date annual employment data from the Labour Force Survey. The growth rates from the Labour Force Survey (LFS) at the provincial level for the basic industries are used to project growth down to the Regional District level. The model then calculates the indirect jobs based on the Regional District specific multipliers. The direct and indirect employment levels are then used to calculate the wages and salaries earned in the basic industries which in turn are converted to employment in the non-basic industries through the income to support-industry job multipliers. As well, transfer payments and investment income are also converted to employment in the non-basic industries using the same multipliers. The output from the model is then benchmarked to the LFS industry numbers at the BC level as well as to the LFS regional employment numbers for the Development Regions and the Capital and Greater Vancouver Regional Districts. In the current version of the model, the employment numbers are reconciled up to the 2005 annual averages from the LFS.

Once the model is brought up to the most current employment levels, then the forecast is carried out for five to ten years further. The industrial employment projections from the Canadian Occupational Projection System (COPS) are now used as the source data for the industrial growth, both in determining the growth rates in the direct employment and then as a benchmark on which to reconcile the industrial employment generated by the model.

While the total employment is forced to the COPS employment levels, there is leeway to adjust growth rates by industry across the sub-provincial regions. There are some standard variables that are used to differentiate the outlook for

the regions. For example, the growth in the education sector is dictated by the projected K-12 and post-secondary population growth in the relevant age groups. Government Services is projected in line with the total population projections for the Regional Districts. Employment in the Health Sector is so often governed by the growth in the senior's population as are the transfer payments flowing in. (CPP and OAS is a large component of transfer payments). As well, pensions from private pension plans are considered investment income meaning seniors receive a high proportion of the total investment income in a region.

An important determining factor of growth by region is the major projects coming on stream in the outlook timeframe. Firstly they impact construction employment and secondly many will impact specific industries once they move into the production phase. In BC, we are dealing with the preparations for the 2010 Winter Games so many of the construction occupations will be in short supply.

The intent is to update the REPM annually, based on another year of LFS data plus a new COPS forecast. Currently, there is a demand for economic forecasts by occupation at the college region level. College Regions are aggregations of sub-sets of Regional Districts. Occupational forecasts are being produced at the college region level. In the appendix there is a conversion table which outlines which Regional District belongs to which College Region.

The model is only as good as the input data assumptions. Our reliance on good quality data from COPS is very important. Users of the data who perceive any problems with the assumptions in the model or question the quality of any of the data series being used should contact BC STATS at bcstats@gov.bc.ca.

May 2, 2006

Appendix 2

COPS INDUSTRY CONVERSION TO REPM

REPM INDUSTRY	COPS INDUSTRY	% of COPS INDUSTRY
ACC&FD	31 Accommodation and food services	100
AGRIC	1 Agriculture	100
BEVMFG	9 Food and Beverage Products	16
BUS_HI	25 Computer System Design Services	100
BUS_HI	24 Professional Business Services	50
BUS_HI	26 Other Professional Services	50
BUS_LO	27 Management, Administrative and Other Support	100
BUS_LO	24 Professional Business Services	50
BUS_LO	26 Other Professional Services	50
COMMUNICA	30 Information, culture and recreation	100
CONSTRUCT	8 Construction	100
EDUCATION	28 Educational Services	100
FIRE	23 Finance, Insurance, Real Estate and Leasing	100
FISHING	3 Fishing, Hunting and Trapping	100
FISHMFG	9 Food and Beverage Products	18
FOODMFG	9 Food and Beverage Products	66
FORESTLOG	2 Forestry and Logging with support activities	100
GOVT	33 Public administration	100
HEALTH	29 Health Care and Social Assistance	75
MINING	5 Mining (except Oil and Gas)	100
MINING	6 Support Activities for Mining and Oil and Gas Extraction	67
MINMFG	14 Manufactured Mineral Products	50
OTHMFG	12 Printing and Related Support Activities	100
OTHMFG	13 Rubber, Plastics and Chemicals	100
OTHMFG	14 Manufactured Mineral Products	50
OTHMFG	15 Metal Fabrication and Machinery (excluding electrical)	100
OTHMFG	16 Computer, Electronic and Electrical Products	100
OTHMFG	17 Motor Vehicle, Body, Trailer & Parts Manufacturing	100
OTHMFG	18 Other Transportation Equipment Manufacturing	100
OTHSERV	29 Health Care and Social Assistance	25
OTHSERV	32 Other services	100

COPS INDUSTRY CONVERSION TO REPM

REPM INDUSTRY	COPS INDUSTRY	% of COPS INDUSTRY
PAPERPULP	11 Paper Manufacturing	100
PETROL	4 Oil and Gas Extraction	100
PETROL	6 Support Activities for Mining and Oil and Gas Extraction	33
PETROLMFG	19 Other Manufacturing	7
RETAIL	21 Retail Trade	100
TRANOTHER	22 Transportation and Warehousing	59
TRANRAIL	22 Transportation and Warehousing	5
TRANTRUCK	22 Transportation and Warehousing	31
TRANWATER	22 Transportation and Warehousing	5
UTILITIES	7 Utilities	100
WDOTHER	10 Wood Product Manufacturing	29
WDSAWMILLS	10 Wood Product Manufacturing	71
WHOLESALE	20 Wholesale Trade	100

Appendix 3

REGIONAL DISTRICT TO COLLEGE REGION CONVERSION FOR REPM

COLLEGE REGION	REGIONAL DISTRICT #	REGIONAL DISTRICT NAME	% of REGIONAL DISTRICT
CAMOSUN	17	Capital	100
FRASER VALLEY	9	Fraser Valley	100
LOWER MAINLAND	15	Greater Vancouver	100
LOWER MAINLAND	29	Sunshine Coast	100
LOWER MAINLAND	31	Squamish Lillooet	87
MALASPINA	19	Cowichan Valley	100
MALASPINA	21	Nanaimo	100
MALASPINA	27	Powell River	100
NEW CALEDONIA	41	Cariboo	37
NEW CALEDONIA	51	Bulkley Nechako	61
NEW CALEDONIA	53	Fraser-Fort George	100
NORTH ISLAND	23	Alberni-Clayoquot	100
NORTH ISLAND	25	Comox Strathcona	100
NORTH ISLAND	43	Mount Waddington	100
NORTH ISLAND	45	Central Coast	100
NORTHERN LIGHTS	49	Kitimat Stikine	2
NORTHERN LIGHTS	55	Peace River	100
NORTHERN LIGHTS	57	Stikine	100
NORTHERN LIGHTS	59	Northern Rockies	100
NORTHWEST	47	Skeena-Queen Charlotte	100
NORTHWEST	49	Kitimat Stikine	98
NORTHWEST	51	Bulkley Nechako	39
OKANAGAN	7	Okanagan-Similkameen	100
OKANAGAN	35	Central Okanagan	100
OKANAGAN	37	North Okanagan	100
OKANAGAN	39	Columbia Shushwap	85
ROCKIES	1	East Kootenay	100
ROCKIES	3	Central Kootenays	20
ROCKIES	39	Columbia Shushwap	15
SELKIRK	3	Central Kootenays	80
SELKIRK	5	Kootenay Boundary	100
THOMPSON RIVERS	31	Squamish Lillooet	13
THOMPSON RIVERS	33	Thompson Nicola	100
THOMPSON RIVERS	41	Cariboo	63

Appendix 4

Projected Annual Growth Rates in Occupational Demand (3-digit)

North Island College Region

Projected Annual Growth Rates in Occupational Demand

	Estimated Employment	Average Annual % Change			Avg Annual % Chg Over 4 Years
	<u>2005</u>	<u>2007/2005</u>	<u>2009/2007</u>	<u>2010/2009</u>	<u>2009/2005</u>
All occupations	70,227	1.2	1.4	2.1	1.3
A01.001 Legislators and Senior Management	824	1.0	1.3	1.6	1.2
A11.011 Administrative Services Managers	521	1.1	1.1	2.1	1.1
A12.021 Managers in Engineering, Architecture, Science & Information Systems	218	0.9	1.2	1.7	1.1
A13.061 Sales, Marketing and Advertising Managers	430	0.9	1.1	2.5	1.0
A14.072 Facility Operation and Maintenance Managers	207	1.4	1.3	1.9	1.4
A21.062 Managers in Retail Trade	1,746	0.8	0.4	4.8	0.6
A22.063 Managers in Food Service and Accommodation	1,100	0.6	1.3	4.4	0.9
A30.012 Managers in Financial and Business Services	385	0.6	0.1	3.4	0.4
A31.013 Managers in Communication (Except Broadcasting)	38	1.4	1.5	1.2	1.5
A32.031 Managers in Health, Education, Social and Community Services	381	1.4	1.1	1.7	1.3
A33.041 Managers in Public Administration	68	0.8	0.8	1.2	0.8
A34.051 Managers in Art, Culture, Recreation and Sport	68	0.9	1.0	1.4	1.0
A35.064 Managers in Protective Service	92	0.7	0.7	0.7	0.7
A36.065 Managers in Other Services	91	-0.3	0.2	2.9	0.0
A37.071 Managers in Construction and Transportation	709	2.1	5.9	-4.9	4.1
A38.081 Managers in Primary Production (Except Agriculture)	225	1.7	0.2	0.2	0.9
A39.091 Managers in Manufacturing and Utilities	297	2.1	1.4	2.6	1.8
B01.111 Auditors, Accountants and Investment Professionals	1,420	0.9	0.7	2.4	0.8
B02.112 Human Resources and Business Service Professionals	339	0.7	0.8	2.0	0.8
B11.123 Finance and Insurance Administrative Occupations	1,067	1.0	1.1	1.8	1.0
B21.124 Secretaries, Records and Transcriptionists	1,468	1.2	1.4	1.5	1.3
B31.122 Administrative and Regulatory Occupations	1,204	1.1	1.4	1.6	1.2
B41.121 Clerical Supervisors	238	1.2	1.0	2.4	1.1
B51.141 Clerical Occupations, General Office Skills	1,876	1.2	1.3	2.2	1.3
B52.142 Office Equipment Operators	207	1.0	0.9	2.0	1.0
B53.143 Finance and Insurance Clerks	1,287	0.9	0.6	2.8	0.8
B54.144 Administrative Support Clerks	390	1.2	1.2	2.0	1.2
B55.145 Library Correspondence and Related Information Clerks	667	0.9	0.8	2.4	0.8

North Island College Region

Projected Annual Growth Rates in Occupational Demand

	Estimated Employment	Average Annual % Change			Avg Annual % Chg Over 4 Years
	<u>2005</u>	<u>2007/2005</u>	<u>2009/2007</u>	<u>2010/2009</u>	<u>2009/2005</u>
	B56.146 Mail and Message Distribution Occupations	324	2.0	1.8	2.4
B57.147 Recording, Scheduling and Distributing Occupations	663	1.4	1.1	2.9	1.3
C01.211 Physical Science Professionals	120	1.2	1.0	1.5	1.1
C02.212 Life Science Professionals	407	1.3	0.3	0.7	0.8
C03.213 Civil, Mechanical, Electrical and Chemical Engineers	446	1.4	1.6	0.9	1.5
C04.214 Other Engineers	207	1.6	1.4	1.8	1.5
C05.215 Architects, Urban Planners and Land Surveyors	196	0.9	1.6	0.7	1.3
C06.216 Mathematicians, Statisticians and Actuaries	16	1.0	1.2	1.8	1.1
C07.217 Computer and Information Systems Professionals	1,030	0.9	1.0	1.9	0.9
C11.221 Technical Occupations in Physical Sciences	97	1.5	1.2	1.4	1.3
C12.222 Technical Occupations in Life Sciences	571	1.4	0.3	0.4	0.8
C13.223 Technical Occupations in Civil, Mechanical & Industrial Engineering	190	1.5	3.6	-2.0	2.6
C14.224 Technical Occupations in Electronics and Electrical Engineering	341	0.9	1.3	1.8	1.1
C15.225 Technical Occupations in Architecture, Drafting, Surveying & Mapping	262	1.0	1.3	1.1	1.2
C16.226 Other Technical Inspectors and Regulatory Officers	141	1.2	1.7	0.7	1.5
C17.227 Transportation Officers and Controllers	263	3.7	2.4	2.0	3.1
C18.228 Technical Occupations in Computer and Information Systems	353	1.0	0.9	2.1	1.0
D01.311 Physicians Dentists and Veterinarians	447	2.4	2.5	4.0	2.5
D02.312 Optometrists, Chiropractors & Other Health Diagnosing/Treating Profs.	59	2.4	2.5	4.2	2.5
D03.313 Pharmacists, Dietitians and Nutritionists	166	1.5	1.1	4.8	1.3
D04.314 Therapy and Assessment Professionals	205	2.4	2.5	3.9	2.5
D11.315 Nurse Supervisors and Registered Nurses	997	2.5	2.6	4.1	2.6
D21.321 Medical Technologists and Technicians (Except Dental Health)	360	2.2	2.3	3.8	2.3
D22.322 Technical Occupations in Dental Health Care	97	2.3	2.5	4.4	2.5
D23.323 Other Technical Occupations in Health Care (Except Dental)	490	2.1	2.1	3.8	2.1
D31.341 Assisting Occupations in Support of Health Services	958	2.3	2.4	4.2	2.4
E01.411 Judges, Lawyers and Quebec Notaries	358	0.7	1.0	1.7	0.9
E02.415 Psychologists, Social Workers, Counsellors, Clergy & Probation Officers	599	1.0	1.3	3.4	1.2
E03 Policy and program officers researchers and consultants	560	1.0	1.0	1.8	1.0
E11.412 University Professors and Assistants	370	1.0	0.5	0.3	0.7

North Island College Region

Projected Annual Growth Rates in Occupational Demand

	Estimated Employment	Average Annual % Change			Avg Annual % Chg Over 4 Years
	<u>2005</u>	<u>2007/2005</u>	<u>2009/2007</u>	<u>2010/2009</u>	<u>2009/2005</u>
E12.413 College and Other Vocational Instructors	439	1.0	0.5	0.5	0.7
E13.414 Secondary and Elementary School Teachers & Educational Counsellors	1,976	1.0	0.4	0.3	0.7
E21.421 Paralegals, Social Services Workers & Occupations in Education & Religion n.e.c.	1,521	1.7	1.7	3.1	1.7
F01 Librarians, archivists, conservators and curators	46	1.0	1.0	0.9	1.0
F02.512 Writing, Translating and Public Relations Professionals	283	0.9	0.9	1.7	0.9
F03.513 Creative and Performing Artists	360	1.0	0.8	0.8	0.9
F11.521 Technical Occupations in Libraries, Archives Museums & Art Galleries	65	1.1	1.0	0.6	1.1
F12.522 Photographers, Graphic Arts Technicians & Technical & coordinating Occupations in Motion Pictures Broadcasting & Performing	179	1.0	1.1	1.4	1.0
F13.523 Announcers and Other Performers	40	1.0	1.1	1.8	1.1
F14.524 Creative Designers and Craftspersons	372	0.9	1.1	2.5	1.0
F15.525 Athletes, Coaches, Referees and Related Occupations	310	1.0	0.9	1.4	0.9
G01.621 Sales and Service Supervisors	500	0.9	0.9	4.4	0.9
G11.641 Sales Representatives, Wholesale Trade	436	0.9	1.1	2.8	1.0
G12.622 Technical Sales Specialists, Wholesale Trade	125	0.7	1.3	2.6	1.0
G13.623 Insurance and Real Estate Sales Occupations and Buyers	333	0.7	0.2	3.7	0.5
G21.642 Retail Salespersons and Sales Clerks	2,851	0.9	0.4	4.9	0.7
G31.661 Cashiers	1,326	0.9	0.5	4.9	0.7
G41.624 Chefs and Cooks	1,385	0.7	1.4	4.3	1.0
G51.645 Occupations in Food and Beverage Service	1,733	0.6	1.3	4.4	0.9
G61.626 Police Officers and Fire-fighters	437	0.7	0.8	0.7	0.7
G62.646 Other Occupations in Protective Service	352	0.7	0.8	1.1	0.8
G63.665 Security Guards and Related Occupations	107	1.1	1.1	2.9	1.1
G71.643 Occupations in Travel and Accommodation	397	1.9	2.0	3.1	2.0
G72.644 Tour and Recreational Guides and Casino Occupations	90	1.3	1.4	2.1	1.4
G73.667 Other Occupations in Travel Accommodation, Amusement & Recreation	96	1.3	1.3	2.3	1.3
G81.647 Childcare and Home Support Workers	1,391	1.0	1.1	2.9	1.1
G91.627 Technical Occupations in Personal Service	351	-1.8	-1.1	4.6	-1.4
G92.648 Other Occupations in Personal Service	196	-1.1	-0.6	4.4	-0.8

North Island College Region

Projected Annual Growth Rates in Occupational Demand

	Estimated Employment	Average Annual % Change			Avg Annual % Chg Over 4 Years
	<u>2005</u>	<u>2007/2005</u>	<u>2009/2007</u>	<u>2010/2009</u>	<u>2009/2005</u>
G93.666 Cleaners	1,252	0.9	1.3	3.0	1.1
G94.625 Butchers and Bakers	440	1.5	0.9	3.5	1.2
G96.664 Food Counter Attendants, Kitchen Helpers & Related Occupations	1,719	0.8	1.4	4.3	1.1
G97.662 Other Sales and Related Occupations	1,075	0.9	0.3	5.1	0.6
G98.668 Other Elemental Service Occupations	192	-0.1	0.3	4.0	0.1
H01.721 Contractors and Supervisors, Trades and Related Workers	507	1.8	5.0	-3.8	3.5
H02.722 Supervisors, Railway and Motor Transportation Occupations	22	1.8	1.8	1.5	1.8
H11.725 Plumbers, Pipefitters and Gas Fitters	368	2.1	5.3	-4.5	3.8
H12.727 Carpenters and Cabinetmakers	941	2.1	6.0	-5.1	4.2
H13.728 Masonry and Plastering Trades	353	2.2	6.8	-6.3	4.7
H14.729 Other Construction Trades	610	2.1	6.3	-5.5	4.3
H21.724 Electrical Trades and Telecommunications Occupations	682	1.8	4.1	-2.6	3.0
H22.735 Stationary Engineers and Power Station and System Operators	116	1.9	1.3	1.5	1.6
H31.723 Machinists and Related Occupations	79	1.0	1.3	4.0	1.1
H32.726 Metal Forming, Shaping and Erecting Trades	438	1.4	3.1	-0.8	2.3
H41.731 Machinery & Transportation Equipment Mechanics (Except Motor Vehicle)	918	1.5	1.6	1.0	1.6
H42.732 Automotive service technicians	645	-0.7	-0.4	4.2	-0.5
H43.733 Other Mechanics	98	0.1	0.5	3.2	0.3
H51.734 Upholsterers, Tailors, Shoe Repairers, Jewellers & Related Occupations	104	-0.4	0.0	4.9	-0.2
H52.738 Printing Press Operators, Commercial Divers & Other Trades & Related Occupations n.e.c.	125	0.7	1.1	3.9	0.9
H53.744 Other installers repairers and servicers	271	1.1	2.8	-0.2	2.0
H61.742 Heavy Equipment Operators	547	1.8	3.5	-2.6	2.7
H62.737 Crane Operators Drillers and Blasters	97	1.8	3.7	-2.8	2.8
H71.741 Motor Vehicle and Transit Drivers	1,539	1.1	1.4	1.2	1.3
H72.736 Train Crew Operating Occupations	13	3.1	2.0	0.9	2.6
H73.743 Other Transport Equipment Operators and Related Workers	217	4.0	2.5	2.0	3.4
H81.745 Longshore Workers and Material Handlers	730	1.4	1.2	2.6	1.4
H82.761 Trades Helpers and Labourers	572	2.0	5.8	-4.9	4.0

North Island College Region

Projected Annual Growth Rates in Occupational Demand

	Estimated Employment	Average Annual % Change			Avg Annual % Chg Over 4 Years
	<u>2005</u>	<u>2007/2005</u>	<u>2009/2007</u>	<u>2010/2009</u>	<u>2009/2005</u>
H83.762 Public Works and Other Labourers n.e.c.	73	1.2	2.2	-0.4	1.7
I01.825 Contractors, Operators & Supervisors in Agriculture, Horticulture & Aquaculture	1,028	0.9	0.5	4.0	0.7
I02.843 Agriculture and Horticulture Workers	856	0.9	0.4	4.0	0.7
I11.821 Supervisors, Logging and Forestry	214	1.6	-0.1	-0.1	0.7
I12.822 Supervisors, Mining Oil and Gas	46	1.5	1.2	1.3	1.4
I13.823 Underground Miners, Oil and Gas Drillers and Related Workers	53	1.7	1.0	1.4	1.4
I14.841 Mine Service Workers and Operators in Oil and Gas Drilling	32	2.5	1.7	-0.1	2.1
I15.824 Logging Machinery Operators	387	1.7	-0.2	-0.4	0.8
I16.842 Logging and Forestry Workers	678	1.7	-0.3	-0.7	0.7
I17.826 Fishing Vessel Masters and Skippers and Fishermen/women	284	1.6	1.4	7.0	1.5
I18.844 Other Fishing and Trapping Occupations	75	1.6	1.4	6.9	1.5
I21.861 Primary Production Labourers	1,012	1.4	0.2	0.7	0.8
J01.921 Supervisors, Processing Occupations	301	2.0	1.2	2.3	1.7
J02.922 Supervisors, Assembly and Fabrication	35	1.2	1.7	3.5	1.5
J11.923 Central Control & Process Operators in Manufacturing & Processing	144	3.7	1.3	0.2	2.6
J12.941 Machine Operators & Related Workers in Metal & Mineral Products Processing	49	1.2	2.4	1.6	1.8
J13.942 Machine Operators & Related Workers in Chemical, Plastic & Rubber Processing	32	1.4	1.2	1.7	1.3
J14.943 Machine Operators & Related Workers in Pulp & Paper Production & Wood Processing	859	1.0	0.9	3.4	1.0
J15.944 Machine Operators and Related Workers in Textile Processing	16	1.2	0.5	2.7	0.9
J16.945 Machine Operators and Related Workers in Fabric, Fur & Leather Products Manufacturing	71	0.8	1.0	5.0	0.9
J17.946 Machine Operators & Related Workers in Food, Beverage & Tobacco Processing	621	3.4	1.6	1.2	2.6
J18.947 Printing Machine Operators and Related Occupations	100	0.2	0.4	4.4	0.3
J19.951 Machining, Metalworking, Woodworking & Related Machine Operators	60	0.9	1.5	4.1	1.2
J21.948 Mechanical Electrical and Electronics Assemblers	80	0.9	1.4	4.2	1.2

North Island College Region

Projected Annual Growth Rates in Occupational Demand

	Estimated Employment	Average Annual % Change			Avg Annual % Chg Over 4 Years
	<u>2005</u>	<u>2007/2005</u>	<u>2009/2007</u>	<u>2010/2009</u>	<u>2009/2005</u>
J22.949 Other Assembly and Related Occupations	197	1.1	1.8	3.2	1.5
J31.961 Labourers in Processing Manufacturing and Utilities	1,709	1.9	1.3	2.6	1.6

Appendix 5

Projected Annual Growth Rates in Occupational Demand (4-digit)

North Island College Region

Projected Annual Growth Rates in Occupational Demand

	Estimated Employment	Average Annual % Change			Avg Annual % Chg Over 4 Years
	<u>2005</u>	<u>2007/2005</u>	<u>2009/2007</u>	<u>2010/2009</u>	<u>2009/2005</u>
All occupations	70,227	1.2	1.4	2.1	1.3
A Management occupations	7,397	1.0	1.4	2.3	1.2
A0 Senior management occupations	824	1.0	1.3	1.6	1.2
A01.001 Legislators and Senior Management	824	1.0	1.3	1.6	1.2
A011.0011 Legislators	40	0.7	0.7	0.7	0.7
A012.0012 Senior Government Managers and Officials	114	0.7	0.8	0.8	0.8
A013.0013 Senior Managers - Financial, Communications and Other Business Services	210	0.7	0.6	2.3	0.7
A014.0014 Senior Managers - Health, Education, Social and Community Services and Membership Organizations	94	0.6	0.8	3.4	0.7
A015.0015 Senior Managers - Trade, Broadcasting and Other Services n.e.c.	145	0.5	0.6	4.1	0.6
A016.0016 Senior Managers - Goods Production, Utilities, Transportation and Construction	222	2.0	2.9	-0.9	2.5
A1 Specialist managers	1,378	1.1	1.1	2.1	1.1
A11.011 Administrative Services Managers	521	1.1	1.1	2.1	1.1
A111.0111 Financial Managers	258	1.1	1.0	2.1	1.0
A112.0112 Human Resources Managers	100	1.3	1.0	2.2	1.2
A113.0113 Purchasing Managers	29	1.2	1.2	2.4	1.2
A114.0114 Other Administrative Services Managers	134	1.1	1.3	2.0	1.2
A12.021 Managers in Engineering, Architecture, Science and Information Systems	218	0.9	1.2	1.7	1.1
A121.0211 Engineering Managers	54	1.0	1.7	1.1	1.4
A122.0213 Computer and Information Systems Managers	137	0.9	0.9	2.0	0.9
A123.0212 Architecture and Science Managers	24	1.1	1.3	1.3	1.2
A13.061 Sales, Marketing and Advertising Managers	430	0.9	1.1	2.5	1.0
A131.0611 Sales, Marketing and Advertising Managers	432	0.9	1.1	2.5	1.0
A14.072 Facility Operation and Maintenance Managers	207	1.4	1.3	1.9	1.4
A141.0721 Facility Operation and Maintenance Managers	207	1.4	1.3	2.0	1.4

North Island College Region

Projected Annual Growth Rates in Occupational Demand

	Estimated Employment	Average Annual % Change			Avg Annual % Chg Over 4 Years
	<u>2005</u>	<u>2007/2005</u>	<u>2009/2007</u>	<u>2010/2009</u>	<u>2009/2005</u>
A2 Managers in retail trade, food and accommodation services	2,844	0.7	0.7	4.7	0.7
A21.062 Managers in Retail Trade	1,746	0.8	0.4	4.8	0.6
A211.0621 Retail Trade Managers	1,744	0.8	0.4	4.8	0.6
A22.063 Managers in Food Service and Accommodation	1,100	0.6	1.3	4.4	0.9
A221.0631 Restaurant and Food Service Managers	821	0.6	1.3	4.5	0.9
A222.0632 Accommodation Service Managers	280	0.5	1.3	4.4	0.9
A3 Other managers n.e.c.	2,349	1.5	2.3	-0.2	1.9
A30.012 Managers in Financial and Business Services	385	0.6	0.1	3.4	0.4
A301.0121 Insurance, Real Estate and Financial Brokerage Managers	100	0.7	0.4	2.9	0.6
A302.0122 Banking, Credit and Other Investment Managers	251	0.6	-0.1	3.9	0.2
A303.0123 Other Business Services Managers	34	0.6	1.1	1.8	0.9
A31.013 Managers in Communication (Except Broadcasting)	38	1.4	1.5	1.2	1.5
A311.0131 Telecommunication Carriers Managers	31	1.2	1.3	0.9	1.3
A312.0132 Postal and Courier Services Managers	-	-	-	-	-
A32.031 Managers in Health, Education, Social and Community Services	381	1.4	1.1	1.7	1.3
A321.0311 Managers in Health Care	101	2.3	2.4	3.8	2.4
A322.0312 Administrators - Post-Secondary Education and Vocational Training	81	1.0	0.5	0.3	0.7
A323.0313 School Principals and Administrators of Elementary and Secondary Education	142	1.0	0.4	0.3	0.7
A324.0314 Managers in Social, Community and Correctional Services	59	1.2	1.4	3.2	1.3
A33.041 Managers in Public Administration	68	0.8	0.8	1.2	0.8
A331.0411 Government Managers - Health and Social Policy Development and Program Administration	25	1.0	1.0	1.6	1.0
A332.0412 Government Managers - Economic Analysis, Policy Development and Program Administration	23	0.6	0.7	1.0	0.7
A333.0413 Government Managers - Education Policy Development and Program Administration	-	-	-	-	-
A334.0414 Other Managers in Public Administration	15	0.7	0.8	0.8	0.8
A34.051 Managers in Art, Culture, Recreation and Sport	68	0.9	1.0	1.4	1.0

North Island College Region

Projected Annual Growth Rates in Occupational Demand

	Estimated Employment	Average Annual % Change			Avg Annual % Chg Over 4 Years
	<u>2005</u>	<u>2007/2005</u>	<u>2009/2007</u>	<u>2010/2009</u>	<u>2009/2005</u>
A341.0511 Library, Archive, Museum and Art Gallery Managers	11	1.0	1.2	0.9	1.1
A342.0512 Managers - Publishing, Motion Pictures, Broadcasting and Performing Arts	23	1.1	1.2	1.3	1.2
A343.0513 Recreation and Sports Program and Service Directors	35	0.8	0.8	1.5	0.8
A35.064 Managers in Protective Service	92	0.7	0.7	0.7	0.7
A351.0641 Commissioned Police Officers	16	0.7	0.8	0.7	0.7
A352.0642 Fire Chiefs and Senior Fire-fighting Officers	16	0.8	0.6	0.6	0.7
A353.0643 Commissioned Officers, Armed Forces	60	0.7	0.8	0.7	0.7
A36.065 Managers in Other Services	91	-0.3	0.2	2.9	0.0
A361 0651 Other Services Managers	90	-0.3	0.2	2.9	-0.1
A37.071 Managers in Construction and Transportation	709	2.1	5.9	-4.9	4.1
A371.0711 Construction Managers	421	2.2	6.5	-5.9	4.5
A372.0712 Residential Home Builders and Renovators	179	2.2	6.8	-6.3	4.6
A373.0713 Transportation Managers	109	1.8	1.9	1.6	1.9
A38.081 Managers in Primary Production (Except Agriculture)	225	1.7	0.2	0.2	0.9
A381.0811 Primary Production Managers (Except Agriculture)	225	1.7	0.2	0.2	0.9
A39.091 Managers in Manufacturing and Utilities	297	2.1	1.4	2.6	1.8
A391.0911 Manufacturing Managers	269	2.2	1.5	2.8	1.8
A392.0912 Utilities Managers	27	2.1	1.2	0.7	1.7
B Business, finance and administrative occupations	11,152	1.1	1.1	2.1	1.1
B0 Professional occupations in business and finance	1,757	0.8	0.7	2.3	0.8
B01.111 Auditors, Accountants and Investment Professionals	1,420	0.9	0.7	2.4	0.8
B011.1111 Financial Auditors and Accountants	889	1.0	1.1	1.8	1.1
B012.1112 Financial and Investment Analysts	110	0.9	0.4	2.9	0.7
B013.1113 Securities Agents, Investment Dealers and Brokers	138	0.6	-0.2	3.9	0.2
B014.1114 Other Financial Officers	284	0.6	0.0	3.5	0.3
B02.112 Human Resources and Business Service Professionals	339	0.7	0.8	2.0	0.8
B021.1121 Specialists in Human Resources	146	0.6	0.6	2.3	0.6
B022.1122 Professional Occupations in Business Services to Management	192	0.8	1.0	1.8	0.9

North Island College Region

Projected Annual Growth Rates in Occupational Demand

	Estimated Employment	Average Annual % Change			Avg Annual % Chg Over 4 Years
	<u>2005</u>	<u>2007/2005</u>	<u>2009/2007</u>	<u>2010/2009</u>	<u>2009/2005</u>
B1 Finance and insurance administration occupations	1,068	1.0	1.1	1.8	1.0
B11.123 Finance and Insurance Administrative Occupations	1,067	1.0	1.1	1.8	1.0
B111.1231 Bookkeepers	756	1.1	1.5	1.2	1.3
B112.1232 Loan Officers	91	0.7	-0.1	3.8	0.3
B113.1233 Insurance Adjusters and Claims Examiners	134	0.6	-0.1	3.8	0.3
B114.1234 Insurance Underwriters	34	0.6	-0.1	3.9	0.2
B115.1235 Assessors, Valuers and Appraisers	35	0.7	0.7	1.3	0.7
B116.1236 Customs, Ship and Other Brokers	17	2.0	1.8	2.4	1.9
B2 Secretaries	1,468	1.2	1.4	1.5	1.3
B21.124 Secretaries, Records and Transcriptionists	1,468	1.2	1.4	1.5	1.3
B211.1241 Secretaries (Except Legal and Medical)	1,012	1.0	1.4	1.0	1.2
B212.1242 Legal Secretaries	262	0.8	1.0	1.8	0.9
B213.1243 Medical Secretaries	172	2.4	2.5	4.1	2.6
B214.1244 Court Recorders and Medical Transcriptionists	22	2.1	2.3	3.5	2.2
B3 Administrative and regulatory occupations	1,205	1.1	1.4	1.6	1.3
B31.122 Administrative and Regulatory Occupations	1,204	1.1	1.4	1.6	1.2
B311.1221 Administrative Officers	740	1.2	1.5	1.7	1.4
B312.1222 Executive Assistants	103	1.0	1.1	1.7	1.0
B313.1223 Personnel and Recruitment Officers	41	1.3	1.2	1.7	1.3
B314.1224 Property Administrators	49	0.9	2.1	0.3	1.5
B315.1225 Purchasing Agents and Officers	95	1.3	1.4	2.1	1.4
B316.1226 Conference and Event Planners	44	0.6	0.7	2.3	0.7
B317.1227 Court Officers and Justices of the Peace	19	0.7	0.8	0.7	0.7
B318.1228 Immigration, Employment Insurance and Revenue Officers	111	0.7	0.8	0.7	0.7
B4 Clerical supervisors	238	1.2	1.0	2.4	1.1
B41.121 Clerical Supervisors	238	1.2	1.0	2.4	1.1
B411.1211 Supervisors, General Office & Administrative Support Clerks	61	1.1	1.1	1.9	1.1
B412.1212 Supervisors, Finance and Insurance Clerks	73	0.9	0.5	3.0	0.7
B413.1213 Supervisors, Library Correspondence and Related Information	34	0.8	0.7	1.7	0.7
B414.1214 Supervisors, Mail and Message Distribution Occupations	18	2.4	2.2	1.9	2.4

North Island College Region

Projected Annual Growth Rates in Occupational Demand

	Estimated Employment	Average Annual % Change			Avg Annual % Chg Over 4 Years
	<u>2005</u>	<u>2007/2005</u>	<u>2009/2007</u>	<u>2010/2009</u>	<u>2009/2005</u>
B415.1215 Supervisors, Recording, Distributing and Scheduling Occupations	51	1.5	1.2	2.9	1.4
B5 Clerical occupations	5,415	1.2	1.1	2.4	1.1
B51.141 Clerical Occupations, General Office Skills	1,876	1.2	1.3	2.2	1.3
B511.1411 General Office Clerks	1,194	1.1	1.2	1.7	1.2
B513.1413 Records Management and Filing Clerks	94	1.4	1.4	2.7	1.4
B514.1414 Receptionists and Switchboard Operators	591	1.4	1.5	3.1	1.5
B52.142 Office Equipment Operators	207	1.0	0.9	2.0	1.0
B522.1422 Data Entry Clerks	172	1.0	0.9	2.0	0.9
B523.1423 Desktop Publishing Operators and Related Occupations	14	0.9	1.0	2.3	0.9
B524.1424 Telephone Operators	22	1.1	1.1	1.6	1.1
B53.143 Finance and Insurance Clerks	1,287	0.9	0.6	2.8	0.8
B531.1431 Accounting and Related Clerks	566	1.0	1.2	2.0	1.1
B532.1432 Payroll Clerks	139	1.3	1.3	1.7	1.3
B533.1433 Customer Service Representatives - Financial Services	409	0.6	-0.2	4.0	0.2
B534.1434 Banking, Insurance and Other Financial Clerks	129	0.6	-0.1	3.9	0.3
B535.1435 Collectors	46	1.2	0.5	2.6	0.9
B54.144 Administrative Support Clerks	390	1.2	1.2	2.0	1.2
B541.1441 Administrative Clerks	319	1.3	1.2	2.1	1.3
B542.1442 Personnel Clerks	46	1.5	1.3	2.3	1.4
B543.1443 Court Clerks	27	0.7	0.8	0.7	0.7
B55.145 Library, Correspondence and Related Information Clerks	667	0.9	0.8	2.4	0.8
B551.1451 Library Clerks	32	1.2	1.0	0.8	1.1
B552.1452 Correspondence, Publication and Related Clerks	15	1.0	0.9	1.8	1.0
B553.1453 Customer Service, Information and Related Clerks	460	1.0	0.7	3.0	0.9
B554.1454 Survey Interviewers and Statistical Clerks	159	0.7	0.8	0.9	0.7
B56.146 Mail and Message Distribution Occupations	324	2.0	1.8	2.4	2.0
B561.1461 Mail, Postal and Related Clerks	125	2.1	1.9	2.1	2.1
B562.1462 Letter Carriers	109	2.7	2.5	1.9	2.7
B563.1463 Couriers, Messengers and Door-to-Door Distributors	90	1.1	0.7	3.6	0.9

North Island College Region

Projected Annual Growth Rates in Occupational Demand

	Estimated Employment	Average Annual % Change			Avg Annual % Chg Over 4 Years
	<u>2005</u>	<u>2007/2005</u>	<u>2009/2007</u>	<u>2010/2009</u>	<u>2009/2005</u>
B57.147 Recording, Scheduling and Distributing Occupations	663	1.4	1.1	2.9	1.3
B571.1471 Shippers and Receivers	313	1.5	1.1	3.2	1.3
B572.1472 Storekeepers and Parts Clerks	91	0.9	0.6	4.2	0.8
B573.1473 Production Clerks	30	2.1	1.5	2.7	1.9
B574.1474 Purchasing and Inventory Clerks	108	1.6	1.1	3.1	1.3
B575.1475 Dispatchers and Radio Operators	110	1.2	1.6	0.9	1.4
B576.1476 Transportation Route and Crew	-	-	-	-	-
C Natural and applied sciences and related occupations	4,635	1.3	1.2	1.2	1.3
C0 Professional occupations in natural and applied sciences	2,415	1.1	1.1	1.4	1.1
C01.211 Physical Science Professionals	120	1.2	1.0	1.5	1.1
C011.2111 Physicists and Astronomers	11	0.9	1.0	2.2	0.9
C012.2112 Chemists	41	1.5	1.0	1.8	1.3
C013.2113 Geologists, Geochemists and Geophysicists	57	1.2	1.1	1.3	1.1
C014.2114 Meteorologists	-	-	-	-	-
C015.2115 Other Professional Occupations in Physical Sciences	-	-	-	-	-
C02.212 Life Science Professionals	407	1.3	0.3	0.7	0.8
C021.2121 Biologists and Related Scientists	106	0.9	0.8	1.4	0.9
C022.2122 Forestry Professionals	279	1.4	0.1	0.3	0.7
C023.2123 Agricultural Representatives, Consultants and Specialists	18	0.8	0.8	2.1	0.8
C03.213 Civil, Mechanical, Electrical and Chemical Engineers	446	1.4	1.6	0.9	1.5
C031.2131 Civil Engineers	211	1.1	1.9	0.2	1.5
C032.2132 Mechanical Engineers	109	1.8	1.4	1.6	1.6
C033.2133 Electrical and Electronics Engineers	87	1.1	1.3	1.8	1.2
C034.2134 Chemical Engineers	37	2.9	1.1	1.0	2.1
C04.214 Other Engineers	207	1.6	1.4	1.8	1.5
C041.2141 Industrial and Manufacturing Engineers	26	1.8	1.7	1.5	1.8
C042.2142 Metallurgical and Materials Engineers	-	-	-	-	-
C043.2143 Mining Engineers	18	1.0	1.9	0.5	1.4
C044.2144 Geological Engineers	20	0.9	1.3	1.2	1.1
C045.2145 Petroleum Engineers	-	-	-	-	-

North Island College Region

Projected Annual Growth Rates in Occupational Demand

	Estimated Employment	Average Annual % Change			Avg Annual % Chg Over 4 Years
	<u>2005</u>	<u>2007/2005</u>	<u>2009/2007</u>	<u>2010/2009</u>	<u>2009/2005</u>
C046.2146 Aerospace Engineers	-	-	-	-	-
C047.2147 Computer Engineers (Except Software Engineers)	78	0.9	1.1	2.1	1.0
C048.2148 Other Professional Engineers n.e.c.	49	2.0	1.6	2.3	1.8
C05.215 Architects, Urban Planners and Land Surveyors	196	0.9	1.6	0.7	1.3
C051.2151 Architects	95	0.8	1.4	1.3	1.1
C052.2152 Landscape Architects	-	-	-	-	-
C053.2153 Urban and Land Use Planners	45	1.1	2.2	-0.8	1.7
C054.2154 Land Surveyors	44	0.9	1.6	0.8	1.2
C06.216 Mathematicians, Statisticians and Actuaries	16	1.0	1.2	1.8	1.1
C061.2161 Mathematicians, Statisticians and Actuaries	16	1.0	1.0	2.2	1.0
C07.217 Computer and Information Systems Professionals	1,030	0.9	1.0	1.9	0.9
C071.2171 Information Systems Analysts and Consultants	336	0.9	1.0	1.9	0.9
C072.2172 Database Analysts and Data Administrators	54	1.0	1.0	1.9	1.0
C073.2173 Software Engineers	130	0.8	1.0	1.9	0.9
C074.2174 Computer Programmers and Interactive Media Developers	370	1.0	0.9	1.9	0.9
C075.2175 Web Designers and Developers	139	0.8	1.0	1.8	0.9
C1 Technical occupations related to natural and applied sciences	2,220	1.5	1.3	1.0	1.4
C11.221 Technical Occupations in Physical Sciences	97	1.5	1.2	1.4	1.3
C111.2211 Chemical Technologists and Technicians	54	1.5	1.1	1.2	1.3
C112.2212 Geological and Mineral Technologists and Technicians	36	1.3	1.2	1.5	1.2
C113.2213 Meteorological Technicians	-	-	-	-	-
C12.222 Technical Occupations in Life Sciences	571	1.4	0.3	0.4	0.8
C121.2221 Biological Technologists and Technicians	79	1.1	0.8	2.2	0.9
C122.2222 Agricultural and Fish Products Inspectors	31	1.9	1.1	1.3	1.5
C123.2223 Forestry Technologists and Technicians	381	1.5	0.0	-0.1	0.7
C124.2224 Conservation and Fishery Officers	44	0.8	0.6	0.7	0.7
C125.2225 Landscape and Horticultural Technicians and Specialists	38	1.1	1.0	1.1	1.1
C13.223 Technical Occupations in Civil, Mechanical and Industrial Engineering	190	1.5	3.6	-2.0	2.6
C131.2231 Civil Engineering Technologists and Technicians	51	1.1	1.9	-0.2	1.5

North Island College Region

Projected Annual Growth Rates in Occupational Demand

	Estimated Employment	Average Annual % Change			Avg Annual % Chg Over 4 Years
	<u>2005</u>	<u>2007/2005</u>	<u>2009/2007</u>	<u>2010/2009</u>	<u>2009/2005</u>
C132.2232 Mechanical Engineering Technologists and Technicians	33	1.7	2.0	0.8	1.9
C133.2233 Industrial Engineering and Manufacturing Technologists and Technicians	26	1.5	1.7	1.4	1.6
C134.2234 Construction Estimators	81	2.0	6.0	-5.1	4.1
C14.224 Technical Occupations in Electronics & Electrical Engineering	341	0.9	1.3	1.8	1.1
C141.2241 Electrical and Electronics Engineering Technologists and Technicians	90	0.9	1.2	2.2	1.1
C142.2242 Electronic Service Technicians (Household and Business Equipment)	171	0.3	1.1	2.0	0.7
C143.2243 Industrial Instrument Technicians and Mechanics	56	2.5	1.4	0.7	1.9
C144.2244 Aircraft Instrument Electrical and Avionics Mechanics, Technicians and Inspectors	25	2.0	1.9	1.8	2.0
C15.225 Technical Occupations in Architecture, Drafting, Surveying and Mapping	262	1.0	1.3	1.1	1.2
C151.2251 Architectural Technologists and Technicians	28	0.9	1.5	1.0	1.2
C152.2252 Industrial Designers	20	1.0	1.6	1.6	1.3
C153.2253 Drafting Technologists and Technicians	132	1.1	1.5	1.2	1.3
C154.2254 Land Survey Technologists and Technicians	18	1.1	1.3	0.1	1.2
C155.2255 Mapping and Related Technologists and Technicians	67	0.9	0.7	1.3	0.8
C16.226 Other Technical Inspectors and Regulatory Officers	141	1.2	1.7	0.7	1.5
C161.2261 Nondestructive Testers and Inspectors	12	1.3	1.2	1.7	1.3
C162.2262 Engineering Inspectors and Regulatory Officers	20	1.0	1.1	1.8	1.1
C163.2263 Inspectors in Public and Environmental Health and Occupational Health and Safety	59	1.4	1.5	1.2	1.5
C164.2264 Construction Inspectors	51	1.1	2.1	-0.6	1.7
C17.227 Transportation Officers and Controllers	263	3.7	2.4	2.0	3.1
C171.2271 Air Pilots, Flight Engineers and Flying Instructors	94	2.4	1.9	1.7	2.2
C172.2272 Air Traffic Control and Related Occupations	26	2.5	2.1	1.7	2.3
C173.2273 Deck Officers, Water Transport	89	4.7	2.6	2.1	3.8
C174.2274 Engineer Officers, Water Transport	44	5.1	2.9	2.8	4.2

North Island College Region

Projected Annual Growth Rates in Occupational Demand

	Estimated Employment	Average Annual % Change			Avg Annual % Chg Over 4 Years
	<u>2005</u>	<u>2007/2005</u>	<u>2009/2007</u>	<u>2010/2009</u>	<u>2009/2005</u>
C175.2275 Railway Traffic Controllers and Marine Traffic Regulators	-	-	-	-	-
C18.228 Technical Occupations in Computer and Information Systems	353	1.0	0.9	2.1	1.0
C181.2281 Computer and Network Operators and Web Technicians	185	1.1	0.9	2.0	1.0
C182.2282 User Support Technicians	140	1.0	0.8	2.1	0.9
C183.2283 Systems Testing Technicians	26	0.9	1.0	2.3	1.0
D Health occupations	3,777	2.3	2.4	4.1	2.4
D0 Professional occupations in health	877	2.2	2.2	4.1	2.3
D01.311 Physicians Dentists and Veterinarians	447	2.4	2.5	4.0	2.5
D011.3111 Specialist Physicians	98	2.5	2.6	4.1	2.6
D012.3112 General Practitioners and Family Physicians	209	2.5	2.6	4.2	2.7
D013.3113 Dentists	105	2.5	2.6	4.2	2.7
D014.3114 Veterinarians	34	0.8	1.0	1.8	0.9
D02.312 Optometrists, Chiropractors and Other Health Diagnosing and Treating Professionals	59	2.4	2.5	4.2	2.5
D021.3121 Optometrists	15	2.4	2.5	4.2	2.5
D022.3122 Chiropractors	30	2.5	2.6	4.2	2.7
D023.3123 Other Professional Occupations in Health Diagnosing and Treating	14	2.2	2.3	4.3	2.3
D03.313 Pharmacists, Dietitians and Nutritionists	166	1.5	1.1	4.8	1.3
D031.3131 Pharmacists	128	1.2	0.7	5.0	1.0
D032.3132 Dietitians and Nutritionists	38	2.2	2.3	4.0	2.3
D04.314 Therapy and Assessment Professionals	205	2.4	2.5	3.9	2.5
D041.3141 Audiologists and Speech-Language Pathologists	32	2.1	2.0	3.1	2.1
D042.3142 Physiotherapists	91	2.5	2.6	4.2	2.7
D043.3143 Occupational Therapists	49	2.5	2.6	4.1	2.6
D044.3144 Other Professional Occupations in Therapy and Assessment	34	2.3	2.4	3.9	2.4
D1 Nurse supervisors and registered nurses	997	2.5	2.6	4.1	2.6
D11.315 Nurse Supervisors and Registered Nurses	997	2.5	2.6	4.1	2.6
D111.3151 Head Nurses and Supervisors	34	2.4	2.5	4.0	2.5
D112.3152 Registered Nurses	963	2.5	2.6	4.1	2.6

North Island College Region

Projected Annual Growth Rates in Occupational Demand

	Estimated Employment	Average Annual % Change			Avg Annual % Chg Over 4 Years
	<u>2005</u>	<u>2007/2005</u>	<u>2009/2007</u>	<u>2010/2009</u>	<u>2009/2005</u>
D2 Technical and related occupations in health	946	2.1	2.2	3.9	2.2
D21.321 Medical Technologists and Technicians (Except Dental Health)	360	2.2	2.3	3.8	2.3
D211.3211 Medical Laboratory Technologists and Pathologists' Assistants	109	2.3	2.4	3.9	2.4
D212.3212 Medical Laboratory Technicians	85	2.3	2.4	4.0	2.4
D213.3213 Veterinary and Animal Health Technologists and Technicians	46	0.8	1.0	2.0	0.9
D214.3214 Respiratory Therapists, Clinical Perfusionists and Cardio- Pulmonary Technologists	25	2.4	2.5	4.1	2.5
D215.3215 Medical Radiation Technologists	59	2.5	2.6	4.1	2.6
D216.3216 Medical Sonographers	14	2.5	2.6	4.2	2.7
D217.3217 Cardiology Technologists	-	-	-	-	-
D218.3218 Electroencephalographic and Other Diagnostic Technologists n.e.c.	-	-	-	-	-
D219.3219 Other Medical Technologists and Technicians (Except Dental Health)	-	-	-	-	-
D22.322 Technical Occupations in Dental Health Care	97	2.3	2.5	4.4	2.5
D221.3221 Denturists	-	-	-	-	-
D222.3222 Dental Hygienists and Dental Therapists	66	2.5	2.6	4.2	2.6
D223.3223 Dental Technologists, Technicians and Laboratory Bench Workers	22	1.8	2.2	5.2	2.1
D23.323 Other Technical Occupations in Health Care (Except Dental)	490	2.1	2.1	3.8	2.1
D231.3231 Opticians	46	1.2	0.7	5.1	0.9
D232.3232 Midwives and Practitioners of Natural Healing	39	2.1	2.2	4.2	2.2
D233.3233 Licensed Practical Nurses	203	2.5	2.6	4.1	2.6
D234.3234 Ambulance Attendants and Other Paramedical Occupations	125	2.1	2.0	2.4	2.1
D235.3235 Other Technical Occupations in Therapy and Assessment	76	1.3	1.6	4.2	1.5
D3 Assisting occupations in support of health services	956	2.3	2.4	4.2	2.4
D31.341 Assisting Occupations in Support of Health Services	958	2.3	2.4	4.2	2.4
D311.3411 Dental Assistants	162	2.5	2.6	4.1	2.6
D312.3413 Nurse Aides, Orderlies and Patient Service Associates	584	2.5	2.6	4.1	2.6

North Island College Region

Projected Annual Growth Rates in Occupational Demand

	Estimated Employment	Average Annual % Change			Avg Annual % Chg Over 4 Years
	<u>2005</u>	<u>2007/2005</u>	<u>2009/2007</u>	<u>2010/2009</u>	<u>2009/2005</u>
D313.3414 Other Assisting Occupations in Support of Health Services	210	1.8	1.6	4.6	1.8
E Occupations in social science, education, government service & religion	5,815	1.2	1.0	1.6	1.1
E0 Judges, lawyers, psychologists, social workers, ministers of religion and policy and program officers	1,511	0.9	1.1	2.4	1.0
E01.411 Judges, Lawyers and Quebec Notaries	358	0.7	1.0	1.7	0.9
E011.4111 Judges	11	0.7	0.8	0.7	0.7
E012.4112 Lawyers and Quebec Notaries	346	0.7	1.0	1.8	0.9
E02.415 Psychologists, Social Workers, Counsellors, Clergy and Probation Officers	599	1.0	1.3	3.4	1.2
E021.4151 Psychologists	66	2.0	2.0	3.0	2.0
E022.4152 Social Workers	199	1.7	1.8	2.9	1.8
E023.4153 Family, Marriage and Other Related Counsellors	167	2.0	2.1	3.8	2.1
E024.4154 Ministers of Religion	131	-1.6	-0.9	4.4	-1.2
E025.4155 Probation and Parole Officers and Related Occupations	37	0.8	0.9	1.0	0.9
E03 Policy and program officers, researchers and consultants	560	1.0	1.0	1.8	1.0
E031.4161 Natural and Applied Science Policy Researchers, Consultants and Program Officers	68	0.9	0.9	1.6	0.9
E032.4162 Economists and Economic Policy Researchers and Analysts	25	0.7	0.8	1.4	0.7
E033.4163 Business Development Officers and Marketing Researchers and Consultants	133	0.9	0.9	2.0	0.9
E034.4164 Social Policy Researchers, Consultants & Program Officers	98	0.8	1.0	1.8	0.9
E035.4166 Education Policy Researchers Consultants & Program Officers	56	0.8	0.6	0.7	0.7
E036.4167 Recreation, Sports and Fitness Program Supervisors and Consultants	60	1.2	1.3	2.5	1.3
E037.4168 Program Officers Unique to Government	33	0.7	0.8	0.7	0.7
E038.4169 Other Professional Occupations in Social Science	18	0.9	0.8	1.4	0.8
E039.4165 Health Policy Researchers, Consultants & Program Officers	64	1.4	1.5	2.8	1.5
E1 Teachers and professors	2,785	1.0	0.4	0.3	0.7
E11.412 University Professors and Assistants	370	1.0	0.5	0.3	0.7

North Island College Region

Projected Annual Growth Rates in Occupational Demand

	Estimated Employment	Average Annual % Change			Avg Annual % Chg Over 4 Years
	<u>2005</u>	<u>2007/2005</u>	<u>2009/2007</u>	<u>2010/2009</u>	<u>2009/2005</u>
E111.4121 University Professors	186	1.0	0.4	0.3	0.7
E112.4122 Post-Secondary Teaching and Research Assistants	183	1.0	0.5	0.4	0.7
E12.413 College and Other Vocational Instructors	439	1.0	0.5	0.5	0.7
E121.4131 College and Other Vocational Instructors	439	1.0	0.5	0.5	0.7
E13.414 Secondary and Elementary School Teachers and Educational Counsellors	1,976	1.0	0.4	0.3	0.7
E131.4141 Secondary School Teachers	782	1.0	0.4	0.3	0.7
E132.4142 Elementary School and Kindergarten Teachers	1,088	1.0	0.4	0.3	0.7
E133.4143 Educational Counsellors	105	1.0	0.5	0.4	0.7
E2 Paralegals, social services workers and occupations in education and religion n.e.c.	1,522	1.7	1.7	3.1	1.7
E21.421 Paralegals, Social Services Workers and Occupations in Education and Religion n.e.c.	1,521	1.7	1.7	3.1	1.7
E211.4211 Paralegal and Related Occupations	142	0.7	0.9	1.8	0.9
E212.4212 Community and Social Service Workers	447	1.7	1.8	3.3	1.8
E213.4213 Employment Counsellors	65	1.4	1.4	2.5	1.4
E214.4215 Instructors and Teachers of Persons with Disabilities	45	1.4	1.1	1.5	1.3
E215.4216 Other Instructors	184	1.0	0.5	0.6	0.7
E216.4217 Other Religious Occupations	28	-1.4	-0.8	4.2	-1.1
E217.4214 Early Childhood Educators and Assistants	609	2.3	2.4	4.0	2.4
F Occupations in art, culture, recreation and sport	1,658	1.0	0.9	1.5	1.0
F0 Professional Occupations in Art and Culture	688	1.0	0.8	1.2	0.9
F01 Librarians, archivists, conservators and curators	46	1.0	1.0	0.9	1.0
F011.5111 Librarians	32	1.1	1.0	1.0	1.0
F012.5112 Conservators and Curators	-	-	-	-	-
F013.5113 Archivists	-	-	-	-	-
F02.512 Writing, Translating and Public Relations Professionals	283	0.9	0.9	1.7	0.9
F021.5121 Authors and Writers	82	1.1	1.1	1.4	1.1
F022.5122 Editors	33	1.1	1.0	1.3	1.0
F023.5123 Journalists	23	1.2	1.1	1.0	1.2

North Island College Region

Projected Annual Growth Rates in Occupational Demand

	Estimated Employment	Average Annual % Change			Avg Annual % Chg Over 4 Years
	<u>2005</u>	<u>2007/2005</u>	<u>2009/2007</u>	<u>2010/2009</u>	<u>2009/2005</u>
F024.5124 Professional Occupations in Public Relations and Communications	107	0.6	0.7	2.1	0.7
F025.5125 Translators, Terminologists and Interpreters	41	0.8	1.0	1.6	0.9
F03.513 Creative and Performing Artists	360	1.0	0.8	0.8	0.9
F031.5131 Producers, Directors, Choreographers & Related Occupations	60	1.2	1.1	1.0	1.2
F032.5132 Conductors, Composers and Arrangers	-	-	-	-	-
F033.5133 Musicians and Singers	154	0.9	0.5	0.6	0.7
F034.5134 Dancers	38	1.0	0.5	0.5	0.7
F035.5135 Actors and Comedians	34	1.2	1.1	0.9	1.2
F036.5136 Painters, Sculptors and Other Visual Artists	66	1.2	1.0	1.1	1.1
F1 Technical occupations in art, culture, recreation and sport	968	1.0	1.0	1.8	1.0
F11.521 Technical Occupations in Libraries, Archives, Museums and Art Galleries	65	1.1	1.0	0.6	1.1
F111.5211 Library and Archive Technicians and Assistants	51	1.1	0.8	0.8	1.0
F112.5212 Technical Occupations Related to Museums and Art Galleries	15	1.1	1.7	0.2	1.4
F12.522 Photographers, Graphic Arts Technicians & Technical & coordinating Occupations in Motion Pictures, Broadcasting & Performing Arts	179	1.0	1.1	1.4	1.0
F121.5221 Photographers	61	0.7	0.9	1.9	0.8
F122.5222 Film and Video Camera Operators	13	1.2	1.2	1.0	1.2
F123.5223 Graphic Arts Technicians	15	1.0	1.4	1.6	1.2
F124.5224 Broadcast Technicians	-	-	-	-	-
F125.5225 Audio and Video Recording Technicians	20	1.2	1.1	1.3	1.2
F126.5226 Other Technical and Co-ordinating Occupations in Motion Pictures, Broadcasting and the Performing Arts	30	1.0	1.0	1.3	1.0
F127.5227 Support Occupations in Motion Pictures, Broadcasting and the Performing Arts	32	1.1	1.2	0.9	1.2
F13.523 Announcers and Other Performers	40	1.0	1.1	1.8	1.1
F131.5231 Announcers and Other Broadcasters	30	1.2	1.2	1.6	1.2
F132.5232 Other Performers	11	0.9	1.0	2.1	1.0
F14.524 Creative Designers and Craftspersons	372	0.9	1.1	2.5	1.0

North Island College Region

Projected Annual Growth Rates in Occupational Demand

	Estimated Employment	Average Annual % Change			Avg Annual % Chg Over 4 Years
	<u>2005</u>	<u>2007/2005</u>	<u>2009/2007</u>	<u>2010/2009</u>	<u>2009/2005</u>
F141.5241 Graphic Designers and Illustrators	176	0.9	1.1	2.1	1.0
F142.5242 Interior Designers	64	0.9	1.5	1.4	1.2
F143.5243 Theatre, Fashion, Exhibit and Other Creative Designers	37	0.9	1.0	2.5	0.9
F144.5244 Artisans and Craftspersons	91	0.9	0.9	4.1	0.9
F145.5245 Patternmakers - Textile, Leather and Fur Products	-	-	-	-	-
F15.525 Athletes, Coaches, Referees and Related Occupations	310	1.0	0.9	1.4	0.9
F151.5251 Athletes	-	-	-	-	-
F152.5252 Coaches	42	1.0	0.5	0.7	0.8
F153.5253 Sports Officials and Referees	20	0.4	0.5	1.9	0.4
F154.5254 Program Leaders and Instructors in Recreation and Sport	241	1.0	1.0	1.5	1.0
G Sales and service occupations	16,790	0.8	0.9	4.0	0.8
G0 Sales and service supervisors	500	0.9	0.9	4.4	0.9
G01.621 Sales and Service Supervisors	500	0.9	0.9	4.4	0.9
G011.6211 Retail Trade Supervisors	223	0.9	0.4	4.9	0.7
G012.6212 Food Service Supervisors	191	0.8	1.4	4.3	1.1
G013.6213 Executive Housekeepers	23	0.8	1.5	4.4	1.2
G014.6214 Dry Cleaning and Laundry Supervisors	-	-	-	-	-
G015.6215 Cleaning Supervisors	20	1.1	1.2	2.3	1.2
G016.6216 Other Service Supervisors	36	0.9	1.4	2.7	1.2
G1 Wholesale, technical, insurance, real estate sales specialists and retail,					
wholesale and grain buyers	895	0.8	0.8	3.1	0.8
G11.641 Sales Representatives, Wholesale Trade	436	0.9	1.1	2.8	1.0
G111.6411 Sales Representatives - Wholesale Trade (Non-Technical)	438	0.9	1.1	2.7	1.0
G12.622 Technical Sales Specialists, Wholesale Trade	125	0.7	1.3	2.6	1.0
G121.6221 Technical Sales Specialists - Wholesale Trade	125	0.7	1.3	2.5	1.0
G13.623 Insurance and Real Estate Sales Occupations and Buyers	333	0.7	0.2	3.7	0.5
G131.6231 Insurance Agents and Brokers	231	0.6	-0.2	4.0	0.2
G132.6232 Real Estate Agents and Salespersons	14	1.3	3.5	-2.0	2.5
G133.6233 Retail and Wholesale Buyers	86	1.0	0.6	4.0	0.8
G134.6234 Grain Elevator Operators	-	-	-	-	-

North Island College Region

Projected Annual Growth Rates in Occupational Demand

	Estimated Employment	Average Annual % Change			Avg Annual % Chg Over 4 Years
	<u>2005</u>	<u>2007/2005</u>	<u>2009/2007</u>	<u>2010/2009</u>	<u>2009/2005</u>
G2 Retail salespersons and sales clerks	2,852	0.9	0.4	4.9	0.7
G21.642 Retail Salespersons and Sales Clerks	2,851	0.9	0.4	4.9	0.7
G211.6421 Retail Salespersons and Sales Clerks	2,852	0.9	0.4	4.9	0.7
G3 Cashiers	1,326	0.9	0.5	4.9	0.7
G31.661 Cashiers	1,326	0.9	0.5	4.9	0.7
G311.6611 Cashiers	1,326	0.9	0.5	4.9	0.7
G4 Chefs and cooks	1,384	0.7	1.4	4.3	1.0
G41.624 Chefs and Cooks	1,385	0.7	1.4	4.3	1.0
G411.6241 Chefs	255	0.6	1.3	4.3	1.0
G412.6242 Cooks	1,131	0.7	1.4	4.2	1.1
G5 Occupations in food and beverage service	1,733	0.6	1.3	4.4	0.9
G51.645 Occupations in Food and Beverage Service	1,733	0.6	1.3	4.4	0.9
G511.6451 Maîtres d'hôtel and Hosts/Hostesses	155	0.6	1.3	4.4	1.0
G512.6452 Bartenders	230	0.4	1.2	4.4	0.8
G513.6453 Food and Beverage Servers	1,348	0.6	1.3	4.4	1.0
G6 Occupations in protective services	898	0.8	0.8	1.1	0.8
G61.626 Police Officers and Fire-fighters	437	0.7	0.8	0.7	0.7
G611.6261 Police Officers (Except Commissioned)	289	0.7	0.8	0.7	0.8
G612.6262 Fire-fighters	149	0.7	0.8	0.7	0.7
G62.646 Other Occupations in Protective Service	352	0.7	0.8	1.1	0.8
G621.6461 Sheriffs and Bailiffs	24	0.7	0.8	0.9	0.8
G622.6462 Correctional Service Officers	116	0.7	0.8	0.8	0.8
G623.6463 By-law Enforcement and Other Regulatory Officers n.e.c.	35	0.5	0.6	1.7	0.6
G624.6464 Other Ranks Armed Forces	139	0.7	0.8	0.7	0.7
G625.6465 Other Protective Service Occupations	36	1.0	0.8	3.2	0.9
G63.665 Security Guards and Related Occupations	107	1.1	1.1	2.9	1.1
G631.6651 Security Guards and Related Occupations	108	1.1	1.1	2.8	1.1
G7 Occupations in travel and accommodation including attendants in recreation and sport	587	1.7	1.8	2.8	1.8
G71.643 Occupations in Travel and Accommodation	397	1.9	2.0	3.1	2.0

North Island College Region

Projected Annual Growth Rates in Occupational Demand

	Estimated Employment	Average Annual % Change			Avg Annual % Chg Over 4 Years
	<u>2005</u>	<u>2007/2005</u>	<u>2009/2007</u>	<u>2010/2009</u>	<u>2009/2005</u>
G711.6431 Travel Counsellors	14	1.7	1.6	2.6	1.6
G712.6432 Purser and Flight Attendants	105	2.8	2.5	2.0	2.7
G713.6433 Airline Sales and Service Agents	83	2.7	2.4	2.0	2.6
G714.6434 Ticket Agents, Cargo Service Representatives and Related Clerks (Except Airline)	29	4.5	2.9	2.5	3.8
G715.6435 Hotel Front Desk Clerks	169	0.5	1.3	4.5	0.9
G72.644 Tour and Recreational Guides and Casino Occupations	90	1.3	1.4	2.1	1.4
G721.6441 Tour and Travel Guides	23	1.5	1.6	2.2	1.6
G722.6442 Outdoor Sport and Recreational Guides	33	1.3	1.3	3.2	1.3
G723.6443 Casino Occupations	38	1.4	1.3	1.0	1.3
G73.667 Other Occupations in Travel, Accommodation, Amusement and Recreation	96	1.3	1.3	2.3	1.3
G731.6671 Operators and Attendants in Amusement, Recreation and Sport	54	1.0	1.0	1.3	1.0
G732.6672 Other Attendants in Accommodation and Travel	42	1.5	1.8	3.6	1.7
G8 Childcare and home support workers	1,392	1.0	1.1	2.9	1.1
G81.647 Childcare and Home Support Workers	1,391	1.0	1.1	2.9	1.1
G811.6471 Visiting Homemakers, Housekeepers & Related Occupations	502	2.0	2.2	4.0	2.2
G812.6472 Elementary and Secondary School Teacher Assistants	450	1.0	0.4	0.3	0.7
G814.6474 Babysitters, Nannies and Parents' Helpers	443	0.0	0.5	4.3	0.2
G9 Sales and service occupations n.e.c.	5,225	0.6	0.8	4.1	0.7
G91.627 Technical Occupations in Personal Service	351	-1.8	-1.1	4.6	-1.4
G911.6271 Hairstylists and Barbers	337	-1.8	-1.1	4.6	-1.4
G912.6272 Funeral Directors and Embalmers	14	-1.8	-1.2	4.6	-1.5
G92.648 Other Occupations in Personal Service	196	-1.1	-0.6	4.4	-0.8
G921.6481 Image, Social and Other Personal Consultants	13	-0.3	-0.2	4.4	-0.2
G922.6482 Estheticians, Electrologists and Related Occupations	111	-1.2	-0.8	4.6	-1.0
G923.6483 Pet Groomers and Animal Care Workers	63	-1.0	-0.5	4.1	-0.8
G924.6484 Other Personal Service Occupations	-	-	-	-	-
G93.666 Cleaners	1,252	0.9	1.3	3.0	1.1

North Island College Region

Projected Annual Growth Rates in Occupational Demand

	Estimated Employment	Average Annual % Change			Avg Annual % Chg Over 4 Years
	<u>2005</u>	<u>2007/2005</u>	<u>2009/2007</u>	<u>2010/2009</u>	<u>2009/2005</u>
G931.6661 Light Duty Cleaners	544	1.0	1.6	4.0	1.3
G932.6662 Specialized Cleaners	113	0.2	0.6	3.3	0.4
G933.6663 Janitors, Caretakers and Building Superintendents	594	1.1	1.1	1.9	1.1
G94.625 Butchers and Bakers	440	1.5	0.9	3.5	1.2
G941.6251 Butchers and Meat Cutters - Retail and Wholesale	128	1.0	0.4	5.0	0.7
G942.6252 Bakers	310	1.8	1.2	2.9	1.5
G96.664 Food Counter Attendants, Kitchen Helpers and Related Occupations	1,719	0.8	1.4	4.3	1.1
G961.6641 Food Counter Attendants, Kitchen Helpers and Related Occupations	1,718	0.8	1.4	4.3	1.1
G97.662 Other Sales and Related Occupations	1,075	0.9	0.3	5.1	0.6
G971.6621 Service Station Attendants	170	0.9	0.3	5.2	0.6
G972.6622 Grocery Clerks and Store Shelf Stockers	672	0.9	0.3	5.2	0.6
G973.6623 Other Elemental Sales Occupations	232	0.8	0.5	4.4	0.7
G98.668 Other Elemental Service Occupations	192	-0.1	0.3	4.0	0.1
G981.6681 Dry Cleaning and Laundry Occupations	94	-0.1	0.5	4.3	0.2
G982.6682 Ironing, Pressing and Finishing Occupations	17	-1.0	-0.4	4.7	-0.7
G983.6683 Other Elemental Service Occupations	83	0.0	0.3	3.7	0.1
H Trades, transport and equipment operators and related occupations	10,065	1.5	3.2	-1.3	2.4
H0 Contractors and supervisors in trades and transportation	530	1.8	4.8	-3.5	3.4
H01.721 Contractors and Supervisors, Trades and Related Workers	507	1.8	5.0	-3.8	3.5
H011.7211 Supervisors, Machinists and Related Occupations	-	-	-	-	-
H012.7212 Contractors and Supervisors, Electrical Trades and Telecommunications Occupations	53	1.9	5.1	-3.9	3.6
H013.7213 Contractors and Supervisors, Pipefitting Trades	25	2.1	6.0	-5.2	4.2
H014.7214 Contractors and Supervisors, Metal Forming, Shaping and Erecting Trades	23	1.4	4.4	-2.4	3.0
H015.7215 Contractors and Supervisors, Carpentry Trades	77	2.1	6.4	-5.7	4.4
H016.7216 Contractors and Supervisors, Mechanic Trades	68	0.8	1.2	1.6	1.0

North Island College Region

Projected Annual Growth Rates in Occupational Demand

	Estimated Employment	Average Annual % Change			Avg Annual % Chg Over 4 Years
	<u>2005</u>	<u>2007/2005</u>	<u>2009/2007</u>	<u>2010/2009</u>	<u>2009/2005</u>
H017.7217 Contractors and Supervisors, Heavy Construction					
Equipment Crews	132	2.1	5.2	-4.2	3.7
H018.7218 Supervisors, Printing and Related Occupations	11	0.4	0.8	4.8	0.6
H019.7219 Contractors and Supervisors, Other Construction Trades,					
Installers, Repairers and Servicers	109	2.2	6.5	-5.9	4.5
H02.722 Supervisors, Railway and Motor Transportation Occupations	22	1.8	1.8	1.5	1.8
H021.7221 Supervisors, Railway Transport Operations	-	-	-	-	-
H022.7222 Supervisors, Motor Transport & Other Ground Transit					
Operators	22	1.4	1.5	1.3	1.5
H1 Construction trades	2,269	2.1	6.1	-5.3	4.2
H11.725 Plumbers, Pipefitters and Gas Fitters	368	2.1	5.3	-4.5	3.8
H111.7251 Plumbers	211	2.1	6.3	-5.5	4.3
H112.7252 Steamfitters, Pipefitters and Sprinkler System Installers	124	2.2	3.9	-2.7	3.1
H113.7253 Gas Fitters	34	1.8	5.1	-3.9	3.6
H12.727 Carpenters and Cabinetmakers	941	2.1	6.0	-5.1	4.2
H121.7271 Carpenters	886	2.1	6.2	-5.4	4.3
H122.7272 Cabinetmakers	54	1.4	3.9	0.3	2.7
H13.728 Masonry and Plastering Trades	353	2.2	6.8	-6.3	4.7
H131.7281 Bricklayers	58	2.2	6.7	-6.1	4.6
H132.7282 Concrete Finishers	57	2.1	6.6	-5.9	4.5
H133.7283 Tilers	48	2.2	6.9	-6.3	4.7
H134.7284 Plasterers, Drywall Installers and Finishers and Lathers	189	2.2	6.9	-6.4	4.7
H14.729 Other Construction Trades	610	2.1	6.3	-5.5	4.3
H141.7291 Roofers and Shinglers	120	2.2	6.8	-6.2	4.6
H142.7292 Glaziers	55	1.3	4.5	-3.0	3.0
H143.7293 Insulators	40	2.2	6.0	-5.5	4.2
H144.7294 Painters and Decorators	295	2.1	6.3	-5.7	4.4
H145.7295 Floor Covering Installers	103	2.1	6.3	-5.5	4.3
H2 Stationary engineers, power station operators and electrical trades and					
telecommunications occupations	798	1.8	3.7	-2.0	2.8

North Island College Region

Projected Annual Growth Rates in Occupational Demand

	Estimated Employment	Average Annual % Change			Avg Annual % Chg Over 4 Years
	<u>2005</u>	<u>2007/2005</u>	<u>2009/2007</u>	<u>2010/2009</u>	<u>2009/2005</u>
H21.724 Electrical Trades and Telecommunications Occupations	682	1.8	4.1	-2.6	3.0
H211.7241 Electricians (Except Industrial and Power System)	346	2.0	5.7	-4.8	4.0
H212.7242 Industrial Electricians	176	1.7	2.3	0.4	2.0
H213.7243 Power System Electricians	13	1.6	2.6	-1.0	2.1
H214.7244 Electrical Power Line and Cable Workers	29	1.9	3.0	-1.4	2.5
H215.7245 Telecommunications Line and Cable Workers	34	1.6	3.2	-1.7	2.4
H216.7246 Telecommunications Installation and Repair Workers	65	1.2	1.6	0.6	1.5
H217.7247 Cable Television Service and Maintenance Technicians	19	1.5	2.9	-1.3	2.2
H22.735 Stationary Engineers and Power Station and System Operators	116	1.9	1.3	1.5	1.6
H221.7351 Stationary Engineers and Auxiliary Equipment Operators	106	2.0	1.3	1.4	1.7
H222.7352 Power Systems and Power Station Operators	-	-	-	-	-
H3 Machinists, metal forming, shaping and erecting occupations	517	1.4	2.9	-0.1	2.1
H31.723 Machinists and Related Occupations	79	1.0	1.3	4.0	1.1
H311.7231 Machinists and Machining and Tooling Inspectors	71	1.0	1.3	3.9	1.1
H312.7232 Tool and Die Makers	-	-	-	-	-
H32.726 Metal Forming, Shaping and Erecting Trades	438	1.4	3.1	-0.8	2.3
H321.7261 Sheet Metal Workers	70	1.9	5.5	-3.9	3.8
H322.7262 Boilermakers	13	0.8	2.7	-0.1	1.8
H323.7263 Structural Metal and Platework Fabricators and Fitters	34	0.8	1.8	3.5	1.3
H324.7264 Ironworkers	44	1.9	5.9	-4.8	4.0
H325.7266 Blacksmiths and Die Setters	-	-	-	-	-
H326.7265 Welders and Related Machine Operators	277	1.3	2.3	0.2	1.8
H4 Mechanics	1,658	0.6	0.8	2.3	0.7
H41.731 Machinery and Transportation Equipment Mechanics (Except Motor Vehicle)	918	1.5	1.6	1.0	1.6
H411.7311 Construction Millwrights and Industrial Mechanics (Except Textile)	414	1.5	1.4	1.9	1.5
H412.7312 Heavy-Duty Equipment Mechanics	325	1.1	0.8	0.8	0.9
H413.7313 Refrigeration and Air Conditioning Mechanics	51	1.5	4.9	-3.7	3.2
H414.7314 Railway Carmen/women	-	-	-	-	-

North Island College Region

Projected Annual Growth Rates in Occupational Demand

	Estimated Employment	Average Annual % Change			Avg Annual % Chg Over 4 Years
	<u>2005</u>	<u>2007/2005</u>	<u>2009/2007</u>	<u>2010/2009</u>	<u>2009/2005</u>
H415.7315 Aircraft Mechanics and Aircraft Inspectors	87	2.4	2.2	2.0	2.3
H416.7316 Machine Fitters	11	1.3	1.4	3.6	1.4
H417.7317 Textile Machinery Mechanics and Repairers	0	-	-	-	-
H418.7318 Elevator Constructors and Mechanics	24	2.2	6.7	-6.1	4.6
H42.732 Automotive service technicians	645	-0.7	-0.4	4.2	-0.5
H421.7321 Automotive Service Technicians, Truck Mechanics and Mechanical Repairers	490	-0.5	-0.3	4.2	-0.4
H422.7322 Motor Vehicle Body Repairers	152	-1.3	-0.8	4.6	-1.1
H43.733 Other Mechanics	98	0.1	0.5	3.2	0.3
H431.7331 Oil and Solid Fuel Heating Mechanics	-	-	-	-	-
H432.7332 Electric Appliance Servicers and Repairers	45	-0.5	0.2	3.6	-0.1
H433.7333 Electrical Mechanics	11	0.0	1.1	3.2	0.6
H434.7334 Motorcycle and Other Related Mechanics	11	-0.3	-0.2	4.5	-0.2
H435.7335 Other Small Engine and Equipment Mechanics	23	-0.1	0.2	3.9	0.1
H5 Other trades n.e.c.	499	0.7	1.8	1.8	1.2
H51.734 Upholsterers, Tailors, Shoe Repairers, Jewellers and Related Occupations	104	-0.4	0.0	4.9	-0.2
H511.7341 Upholsterers	21	-1.0	-0.4	4.7	-0.7
H512.7342 Tailors, Dressmakers, Furriers and Milliners	61	-0.2	0.2	5.0	0.0
H513.7343 Shoe Repairers and Shoemakers	-	-	-	-	-
H514.7344 Jewellers, Watch Repairers and Related Occupations	15	0.0	0.0	4.9	0.0
H52.738 Printing Press Operators, Commercial Divers and Other Trades and Related Occupations n.e.c.	125	0.7	1.1	3.9	0.9
H521.7381 Printing Press Operators	36	1.2	1.4	3.7	1.3
H522.7382 Commercial Divers	11	1.3	1.1	3.3	1.2
H523.7383 Other Trades and Related Occupations	81	0.5	0.9	4.0	0.7
H53.744 Other installers, repairers and servicers	271	1.1	2.8	-0.2	2.0
H531.7441 Residential and Commercial Installers and Servicers	116	1.9	5.8	-4.7	4.0
H532.7442 Waterworks and Gas Maintenance Workers	17	1.5	1.8	0.1	1.6
H533.7443 Automotive Mechanical Installers and Servicers	62	0.2	0.1	4.2	0.2

North Island College Region

Projected Annual Growth Rates in Occupational Demand

	Estimated Employment	Average Annual % Change			Avg Annual % Chg Over 4 Years
	<u>2005</u>	<u>2007/2005</u>	<u>2009/2007</u>	<u>2010/2009</u>	<u>2009/2005</u>
H534.7444 Pest Controllers and Fumigators	-	-	-	-	-
H535.7445 Other Repairers and Servicers	70	0.4	0.4	4.2	0.4
H6 Heavy equipment and crane operators including drillers	644	1.8	3.5	-2.6	2.7
H61.742 Heavy Equipment Operators	547	1.8	3.5	-2.6	2.7
H611.7421 Heavy Equipment Operators (Except Crane)	510	1.9	3.6	-2.8	2.8
H612.7422 Public Works Maintenance Equipment Operators	37	1.4	2.5	-0.5	2.0
H62.737 Crane Operators, Drillers and Blasters	97	1.8	3.7	-2.8	2.8
H621.7371 Crane Operators	52	1.8	3.8	-2.2	2.8
H622.7372 Drillers and Blasters - Surface Mining Quarrying and Construction	39	1.8	2.9	-2.6	2.4
H623.7373 Water Well Drillers	-	-	-	-	-
H7 Transportation equipment operators and related workers, excluding labourers	1,773	1.5	1.5	1.3	1.5
H71.741 Motor Vehicle and Transit Drivers	1,539	1.1	1.4	1.2	1.3
H711.7411 Truck Drivers	916	0.7	1.2	0.3	0.9
H712.7412 Bus Drivers and Subway and Other Transit Operators	204	2.2	2.0	1.7	2.1
H713.7413 Taxi and Limousine Drivers and Chauffeurs	118	2.6	2.4	2.0	2.6
H714.7414 Delivery and Courier Service Drivers	302	1.0	1.2	3.3	1.1
H72.736 Train Crew Operating Occupations	13	3.1	2.0	0.9	2.6
H721.7361 Railway and Yard Locomotive Engineers	-	-	-	-	-
H722.7362 Railway Conductors and Brakemen/women	-	-	-	-	-
H73.743 Other Transport Equipment Operators and Related Workers	217	4.0	2.5	2.0	3.4
H731.7431 Railway Yard Workers	-	-	-	-	-
H732.7432 Railway Track Maintenance Workers	-	-	-	-	-
H733.7433 Deck Crew Water Transport	68	4.5	2.6	2.3	3.7
H734.7434 Engine Room Crew, Water Transport	11	4.5	2.6	2.6	3.7
H735.7435 Lock and Cable Ferry Operators and Related Occupations	46	5.7	3.3	2.3	4.7
H736.7436 Boat Operators	38	2.9	1.3	1.4	2.1
H737.7437 Air Transport Ramp Attendants	50	3.0	2.3	1.9	2.7

North Island College Region

Projected Annual Growth Rates in Occupational Demand

	Estimated Employment	Average Annual % Change			Avg Annual % Chg Over 4 Years
	<u>2005</u>	<u>2007/2005</u>	<u>2009/2007</u>	<u>2010/2009</u>	<u>2009/2005</u>
H8 Trades helpers, construction and transportation labourers and related occupations	1,373	1.7	3.2	-0.9	2.5
H81.745 Longshore Workers and Material Handlers	730	1.4	1.2	2.6	1.4
H811.7451 Longshore Workers	95	2.5	1.8	2.0	2.2
H812.7452 Material Handlers	634	1.3	1.1	2.7	1.2
H82.761 Trades Helpers and Labourers	572	2.0	5.8	-4.9	4.0
H821.7611 Construction Trades Helpers and Labourers	532	2.1	6.1	-5.3	4.2
H822.7612 Other Trades Helpers and Labourers	39	0.6	1.6	0.7	1.1
H83.762 Public Works and Other Labourers n.e.c.	73	1.2	2.2	-0.4	1.7
H831.7621 Public Works and Maintenance Labourers	62	1.2	2.2	-0.4	1.7
H832.7622 Railway and Motor Transport Labourers	-	-	-	-	-
I Occupations unique to primary industry	4,662	1.3	0.3	2.2	0.8
I0 Occupations unique to agriculture, excluding labourers	1,884	0.9	0.4	4.0	0.7
I01.825 Contractors, Operators and Supervisors in Agriculture, Horticulture and Aquaculture	1,028	0.9	0.5	4.0	0.7
I011.8251 Farmers and Farm Managers	793	0.9	0.4	4.3	0.6
I012.8252 Agricultural and Related Service Contractors and Managers	12	1.0	0.9	2.9	0.9
I013.8253 Farm Supervisors and Specialized Livestock Workers	58	0.9	0.5	4.0	0.7
I014.8254 Nursery and Greenhouse Operators and Managers	69	1.1	0.2	3.3	0.7
I015.8255 Landscaping & Grounds Maintenance Contractors & Managers	18	1.4	2.1	-0.4	1.8
I016.8256 Supervisors, Landscape and Horticulture	36	0.9	0.8	1.8	0.9
I017.8257 Aquaculture Operators and Managers	40	1.1	0.7	3.9	0.9
I02.843 Agriculture and Horticulture Workers	856	0.9	0.4	4.0	0.7
I021.8431 General Farm Workers	580	0.9	0.4	4.2	0.7
I022.8432 Nursery and Greenhouse Workers	277	1.0	0.3	3.7	0.6
I1 Occupations unique to forestry operations, mining, oil and gas extraction and fishing excluding labourers	1,767	1.7	0.2	1.2	1.0
I11.821 Supervisors, Logging and Forestry	214	1.6	-0.1	-0.1	0.7
I111.8211 Supervisors, Logging and Forestry	212	1.6	-0.1	-0.2	0.7
I12.822 Supervisors, Mining, Oil and Gas	46	1.5	1.2	1.3	1.4

North Island College Region

Projected Annual Growth Rates in Occupational Demand

	Estimated Employment	Average Annual % Change			Avg Annual % Chg Over 4 Years
	<u>2005</u>	<u>2007/2005</u>	<u>2009/2007</u>	<u>2010/2009</u>	<u>2009/2005</u>
I121.8221 Supervisors, Mining and Quarrying	29	1.0	0.9	2.2	1.0
I122.8222 Supervisors, Oil and Gas Drilling and Service	17	2.4	1.9	-0.4	2.2
I13.823 Underground Miners, Oil and Gas Drillers and Related Workers	53	1.7	1.0	1.4	1.4
I131.8231 Underground Production and Development Miners	39	1.1	0.9	1.9	1.0
I132.8232 Oil and Gas Well Drillers, Servicers, Testers and Related Workers	14	3.5	1.6	-0.2	2.6
I14.841 Mine Service Workers and Operators in Oil and Gas Drilling	32	2.5	1.7	-0.1	2.1
I141.8411 Underground Mine Service and Support Workers	15	1.1	1.2	1.1	1.2
I142.8412 Oil and Gas Well Drilling Workers and Services Operators	16	3.8	2.0	-1.0	3.0
I15.824 Logging Machinery Operators	387	1.7	-0.2	-0.4	0.8
I151.8241 Logging Machinery Operators	387	1.7	-0.2	-0.4	0.7
I16.842 Logging and Forestry Workers	678	1.7	-0.3	-0.7	0.7
I161.8421 Chain-saw and Skidder Operators	450	1.7	-0.3	-0.7	0.7
I162.8422 Silviculture and Forestry Workers	228	1.7	-0.2	-0.6	0.7
I17.826 Fishing Vessel Masters and Skippers and Fishermen/women	284	1.6	1.4	7.0	1.5
I171.8261 Fishing Masters and Officers	27	1.6	1.4	7.0	1.5
I172.8262 Fishing Vessel Skippers and Fishermen/women	258	1.6	1.4	7.0	1.5
I18.844 Other Fishing and Trapping Occupations	75	1.6	1.4	6.9	1.5
I181.8441 Fishing Vessel Deckhands	63	1.7	1.4	6.8	1.6
I182.8442 Trappers and Hunters	12	1.6	1.4	7.1	1.5
I2 Primary production labourers	1,013	1.4	0.2	0.7	0.8
I21.861 Primary Production Labourers	1,012	1.4	0.2	0.7	0.8
I211.8611 Harvesting Labourers	91	0.9	0.4	4.1	0.6
I212.8612 Landscaping and Grounds Maintenance Labourers	180	0.7	1.0	1.4	0.9
I213.8613 Aquaculture and Marine Harvest Labourers	67	1.3	0.9	5.3	1.1
I214.8614 Mine Labourers	22	1.1	1.1	1.5	1.1
I215.8615 Oil and Gas Drilling, Servicing and Related Labourers	27	2.2	1.9	-0.4	2.1
I216.8616 Logging and Forestry Labourers	625	1.7	-0.2	-0.4	0.7
J Occupations unique to processing, manufacturing and utilities	4,274	1.9	1.3	2.6	1.6
J0 Supervisors in manufacturing	337	1.9	1.3	2.5	1.6

North Island College Region

Projected Annual Growth Rates in Occupational Demand

	Estimated Employment	Average Annual % Change			Avg Annual % Chg Over 4 Years
	<u>2005</u>	<u>2007/2005</u>	<u>2009/2007</u>	<u>2010/2009</u>	<u>2009/2005</u>
J01.921 Supervisors, Processing Occupations	301	2.0	1.2	2.3	1.7
J011.9211 Supervisors, Mineral and Metal Processing	-	-	-	-	-
J012.9212 Supervisors, Petroleum, Gas and Chemical Processing and Utilities	15	8.6	1.2	0.0	5.0
J013.9213 Supervisors, Food, Beverage and Tobacco Processing	78	3.0	1.6	1.3	2.3
J014.9214 Supervisors, Plastic and Rubber Products Manufacturing	-	-	-	-	-
J015.9215 Supervisors, Forest Products Processing	195	1.2	1.0	3.0	1.1
J016.9216 Supervisors, Textile Processing	-	-	-	-	-
J02.922 Supervisors, Assembly and Fabrication	35	1.2	1.7	3.5	1.5
J021.9221 Supervisors, Motor Vehicle Assembling	-	-	-	-	-
J022.9222 Supervisors, Electronics Manufacturing	-	-	-	-	-
J023.9223 Supervisors, Electrical Products Manufacturing	-	-	-	-	-
J024.9224 Supervisors, Furniture and Fixtures Manufacturing	-	-	-	-	-
J025.9225 Supervisors, Fabric, Fur and Leather Products Manufacturing	-	-	-	-	-
J026.9226 Supervisors, Other Mechanical and Metal Products Manufacturing	-	-	-	-	-
J027.9227 Supervisors, Other Products Manufacturing and Assembly	-	-	-	-	-
J1 Machine operators in manufacturing	1,954	2.0	1.2	2.4	1.6
J11.923 Central Control and Process Operators in Manufacturing and Processing	144	3.7	1.3	0.2	2.6
J111.9231 Central Control & Process Operators Mineral & Metal Processing	-	-	-	-	-
J112.9232 Petroleum, Gas and Chemical Process Operators	21	12.5	1.9	-1.7	7.4
J113.9233 Pulping Control Operators	43	2.2	1.3	0.4	1.8
J114.9234 Papermaking and Coating Control Operators	70	2.3	1.2	0.6	1.8
J12.941 Machine Operators and Related Workers in Metal and Mineral Products Processing	49	1.2	2.4	1.6	1.8
J121.9411 Machine Operators, Mineral and Metal Processing	17	1.1	1.7	1.8	1.4
J122.9412 Foundry Workers	-	-	-	-	-

North Island College Region

Projected Annual Growth Rates in Occupational Demand

	Estimated Employment	Average Annual % Change			Avg Annual % Chg Over 4 Years
	<u>2005</u>	<u>2007/2005</u>	<u>2009/2007</u>	<u>2010/2009</u>	<u>2009/2005</u>
J123.9413 Glass Forming and Finishing Machine Operators and Glass Cutters	-	-	-	-	-
J124.9414 Concrete, Clay and Stone Forming Operators	19	1.4	3.7	-0.2	2.6
J125.9415 Inspectors and Testers, Mineral and Metal Processing	-	-	-	-	-
J13.942 Machine Operators and Related Workers in Chemical, Plastic and Rubber Processing	32	1.4	1.2	1.7	1.3
J131.9421 Chemical Plant Machine Operators	-	-	-	-	-
J132.9422 Plastics Processing Machine Operators	-	-	-	-	-
J133.9423 Rubber Processing Machine Operators and Related Workers	-	-	-	-	-
J134.9424 Water and Waste Plant Operators	18	1.4	1.2	1.1	1.3
J14.943 Machine Operators and Related Workers in Pulp and Paper Production and Wood Processing	859	1.0	0.9	3.4	1.0
J141.9431 Sawmill Machine Operators	335	0.5	0.8	4.8	0.6
J142.9432 Pulp Mill Machine Operators	126	2.2	1.2	0.5	1.8
J143.9433 Papermaking and Finishing Machine Operators	74	2.2	1.3	0.6	1.7
J144.9434 Other Wood Processing Machine Operators	79	0.8	0.9	3.6	0.9
J145.9435 Paper Converting Machine Operators	52	2.2	1.2	0.7	1.7
J146.9436 Lumber Graders and Other Wood Processing Inspectors and Graders	193	0.6	0.7	4.4	0.7
J15.944 Machine Operators and Related Workers in Textile Processing	16	1.2	0.5	2.7	0.9
J151.9441 Textile Fibre and Yarn Preparation Machine Operators	-	-	-	-	-
J152.9442 Weavers, Knitters and Other Fabric-Making Occupations	-	-	-	-	-
J153.9443 Textile Dyeing and Finishing Machine Operators	-	-	-	-	-
J154.9444 Textile Inspectors, Graders and Samplers	-	-	-	-	-
J16.945 Machine Operators and Related Workers in Fabric, Fur and Leather Products Manufacturing	71	0.8	1.0	5.0	0.9
J161.9451 Sewing Machine Operators	62	0.7	1.1	5.1	0.9
J162.9452 Fabric, Fur and Leather Cutters	-	-	-	-	-
J163.9453 Hide and Pelt Processing Workers	0	-	-	-	-

North Island College Region

Projected Annual Growth Rates in Occupational Demand

	Estimated Employment	Average Annual % Change			Avg Annual % Chg Over 4 Years
	<u>2005</u>	<u>2007/2005</u>	<u>2009/2007</u>	<u>2010/2009</u>	<u>2009/2005</u>
J164.9454 Inspectors and Testers, Fabric, Fur and Leather Products Manufacturing	-	-	-	-	-
J17.946 Machine Operators and Related Workers in Food, Beverage and Tobacco Processing	621	3.4	1.6	1.2	2.6
J171.9461 Process Control and Machine Operators, Food and Beverage Processing	132	2.5	1.5	1.4	2.1
J172.9462 Industrial Butchers and Meat Cutters, Poultry Preparers and Related Workers	81	2.6	1.6	1.3	2.2
J173.9463 Fish Plant Workers	367	4.0	1.7	1.0	2.9
J174.9464 Tobacco Processing Machine Operators	0	-	-	-	-
J175.9465 Testers and Graders, Food and Beverage Processing	40	3.1	1.5	1.5	2.4
J18.947 Printing Machine Operators and Related Occupations	100	0.2	0.4	4.4	0.3
J181.9471 Printing Machine Operators	22	1.0	1.2	4.5	1.1
J182.9472 Camera, Platemaking and Other Pre-Press Occupations	-	-	-	-	-
J183.9473 Binding and Finishing Machine Operators	11	1.1	1.5	4.7	1.3
J184.9474 Photographic and Film Processors	58	-0.4	-0.3	4.5	-0.4
J19.951 Machining, Metalworking, Woodworking and Related Machine Operators	60	0.9	1.5	4.1	1.2
J191.9511 Machining Tool Operators	-	-	-	-	-
J192.9512 Forging Machine Operators	-	-	-	-	-
J193.9513 Woodworking Machine Operators	32	0.7	1.4	4.1	1.1
J194.9514 Metalworking Machine Operators	-	-	-	-	-
J196.9516 Other Metal Products Machine Operators.	-	-	-	-	-
J197.9517 Other Products Machine Operators	-	-	-	-	-
J2 Assemblers in manufacturing	279	1.0	1.7	3.4	1.4
J21.948 Mechanical, Electrical and Electronics Assemblers	80	0.9	1.4	4.2	1.2
J211.9481 Aircraft Assemblers and Aircraft Assembly Inspectors	-	-	-	-	-
J212.9482 Motor Vehicle Assemblers, Inspectors and Testers	15	0.8	0.8	4.5	0.8
J213.9483 Electronics Assemblers, Fabricators, Inspectors and Testers	21	0.7	1.5	5.5	1.1

North Island College Region

Projected Annual Growth Rates in Occupational Demand

	Estimated Employment	Average Annual % Change			Avg Annual % Chg Over 4 Years
	<u>2005</u>	<u>2007/2005</u>	<u>2009/2007</u>	<u>2010/2009</u>	<u>2009/2005</u>
J214.9484 Assemblers and Inspectors, Electrical Appliance, Apparatus and Equipment Manufacturing	-	-	-	-	-
J215.9485 Assemblers, Fabricators and Inspectors, Industrial Electrical Motors and Transformers	-	-	-	-	-
J216.9486 Mechanical Assemblers and Inspectors	21	1.3	1.3	2.8	1.3
J217.9487 Machine Operators and Inspectors, Electrical Apparatus Manufacturing	-	-	-	-	-
J22.949 Other Assembly and Related Occupations	197	1.1	1.8	3.2	1.5
J221.9491 Boat Assemblers and Inspectors	22	1.3	1.7	5.1	1.5
J222.9492 Furniture and Fixture Assemblers and Inspectors	50	0.9	1.6	4.1	1.3
J223.9493 Other Wood Products Assemblers and Inspectors	47	1.4	1.8	2.4	1.6
J224.9494 Furniture Finishers and Refinishers	16	-0.3	0.8	3.7	0.2
J225.9495 Plastic Products Assemblers, Finishers and Inspectors	-	-	-	-	-
J226.9496 Painters and Coaters - Industrial	47	1.6	2.6	0.6	2.2
J227.9497 Plating, Metal Spraying and Related Operators	-	-	-	-	-
J228.9498 Other Assemblers and Inspectors	13	0.8	1.5	4.9	1.2
J3 Labourers in processing, manufacturing and utilities	1,708	1.9	1.3	2.6	1.6
J31.961 Labourers in Processing, Manufacturing and Utilities	1,709	1.9	1.3	2.6	1.6
J311.9611 Labourers in Mineral and Metal Processing	14	1.0	2.1	2.2	1.6
J312.9612 Labourers in Metal Fabrication	19	1.1	2.5	3.2	1.8
J313.9613 Labourers in Chemical Products Processing and Utilities	-	-	-	-	-
J314.9614 Labourers in Wood Pulp and Paper Processing	864	0.9	0.9	3.6	0.9
J315.9615 Labourers in Rubber and Plastic Products Manufacturing	-	-	-	-	-
J316.9616 Labourers in Textile Processing	-	-	-	-	-
J317.9617 Labourers in Food Beverage and Tobacco Processing	343	2.4	1.5	1.6	2.0
J318.9618 Labourers in Fish Processing	364	4.0	1.7	1.0	2.9
J319.9619 Other Labourers in Processing, Manufacturing and Utilities	94	1.6	1.5	3.1	1.5

- suppressed due to small numbers