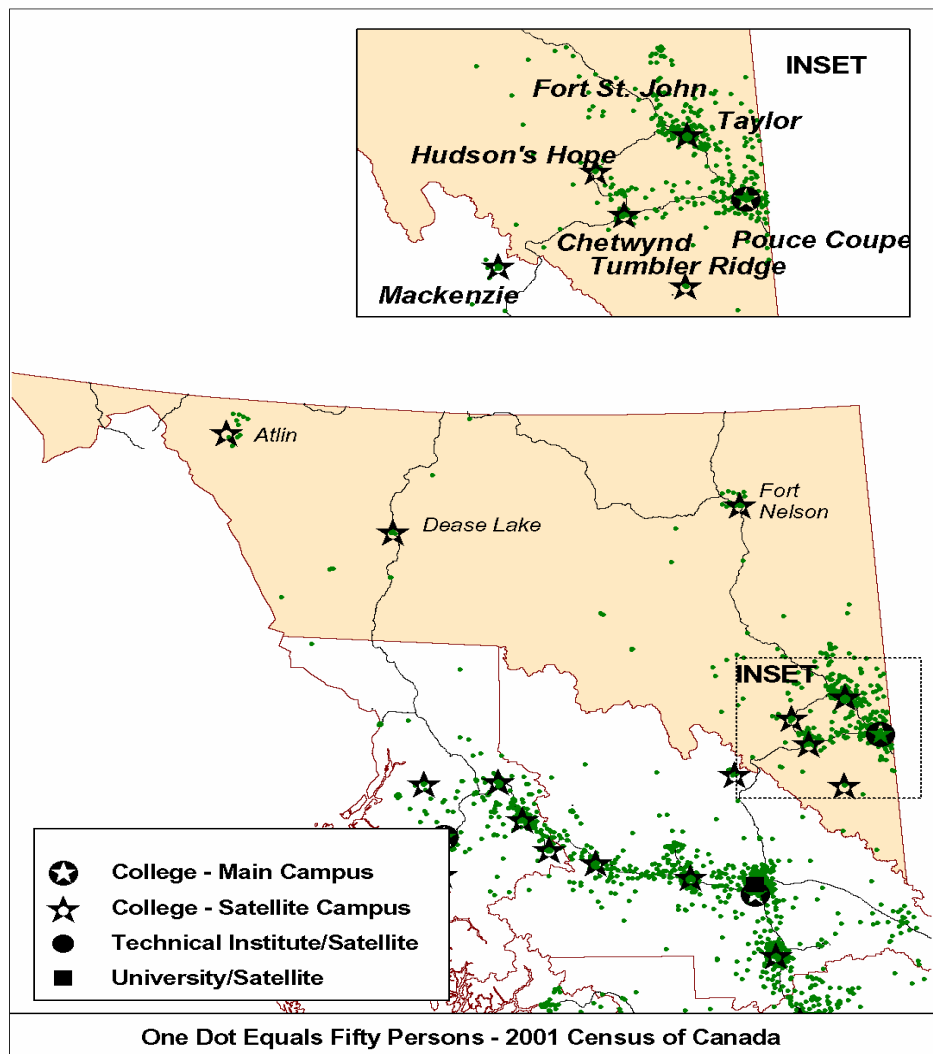


INDUSTRY AND OCCUPATION PROJECTIONS: 2006 -- 2010

NORTHERN LIGHTS COLLEGE REGION



Background Information on Geographic Location of Population

Major Cities	Population <u>2005</u>	% of <u>Region</u>	Land <u>Area</u> <small>Sq Km</small>	Population <u>Density</u> <small>Persons per Sq Km</small>
Fort St. John	17,781	24.9	21.5	825.5
Dawson Creek	11,394	15.9	20.7	551.5
Fort Nelson	4,823	6.7	10.4	462.4
Chetwynd	2,770	3.9	64.3	43.1
Tumbler Ridge	2,526	3.5	1574.5	1.6
Taylor	1,346	1.9	16.6	81.0
Hudson's Hope	1,157	1.6	927.0	1.2
Pouce Coupe	887	1.2	2.1	430.6
Rest of Region	28,856	40.3	347894.9	0.1
Total Region	71,540	100.0	350,532.0	0.2
Region as % of BC	1.7		37.8	
Youth Age 15-29	16,446			
Youth in Region as % of BC	1.9			

Note to Users

All assumptions relating to employment are based on past conditions, modified wherever possible to take into consideration future changes. Consequently, the resulting employment projections are not necessarily what will be, but rather what could be, given the realization of these conditions. It is certainly possible that unforeseen changes in factors such as economic development, government policy, land use and zoning will affect future employment. Consequently, the projections should only be regarded as one possible scenario on the future size and distribution of the workforce.

Regional Employment Projection Model (REPM)

BC STATS is grateful for the support and financial assistance from the Ministry of Advanced Education in developing the model.

Contents

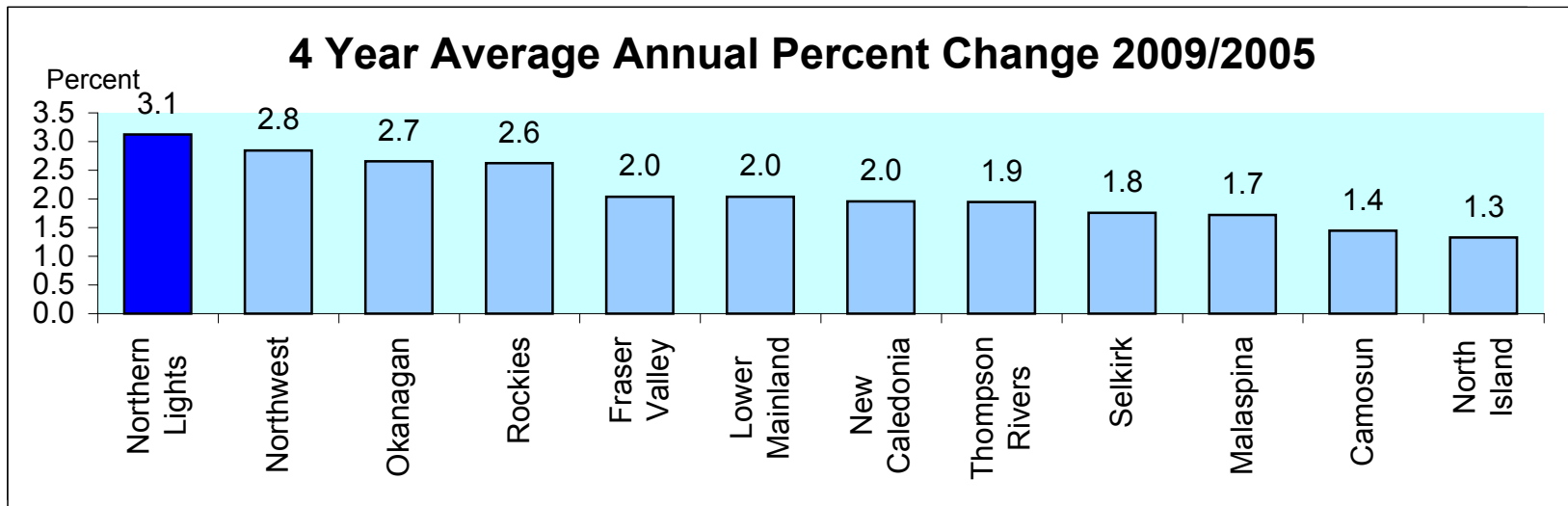
1. Projected Annual Growth in Employment Demand by College Region
2. Industrial Structure in the College Region Compared with BC, 2005 and 2009
3. Projected Annual Growth in Employment Demand by Industry
4. Occupational Structure in the College Region Compared with BC, 2005 and 2009
5. Projected Annual Growth Rates in Occupational Demand (1-digit)
6. Projected Annual Growth Rates in Occupational Demand (2-digits)

Appendices

1. Methodology
2. COPS Industry Conversion to REPM
3. Regional District to College Region Conversion for REPM
4. Projected Annual Growth Rates in Occupational Demand (3-digit)
5. Projected Annual Growth Rates in Occupational Demand (4-digit)

Projected Annual Growth in Employment Demand by College Region

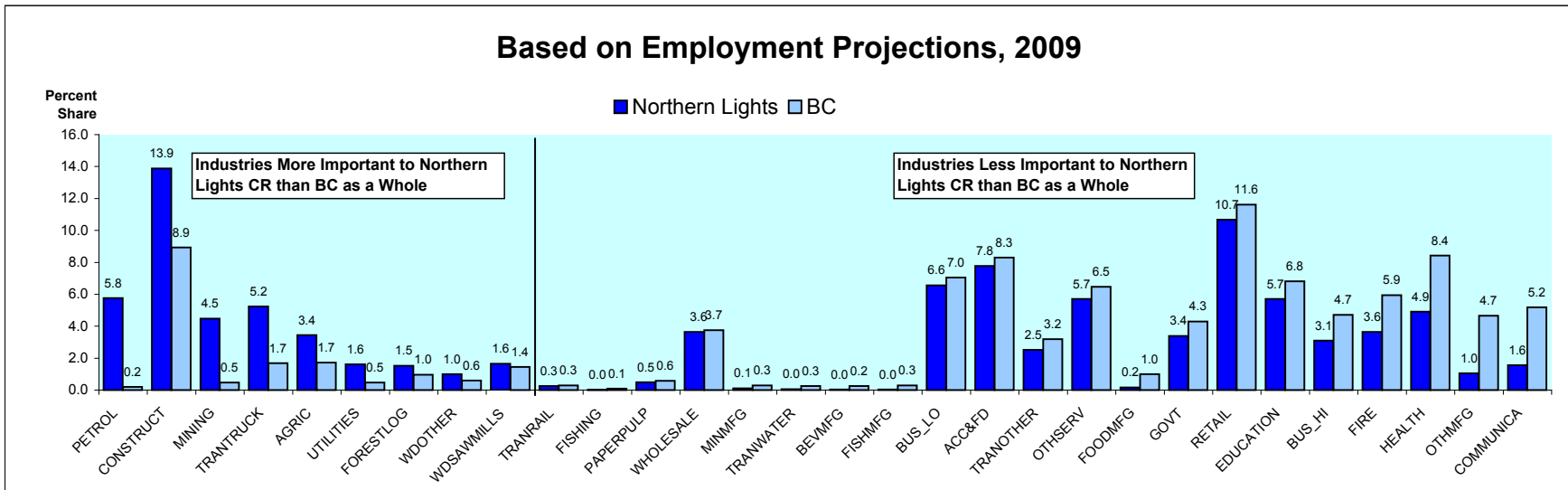
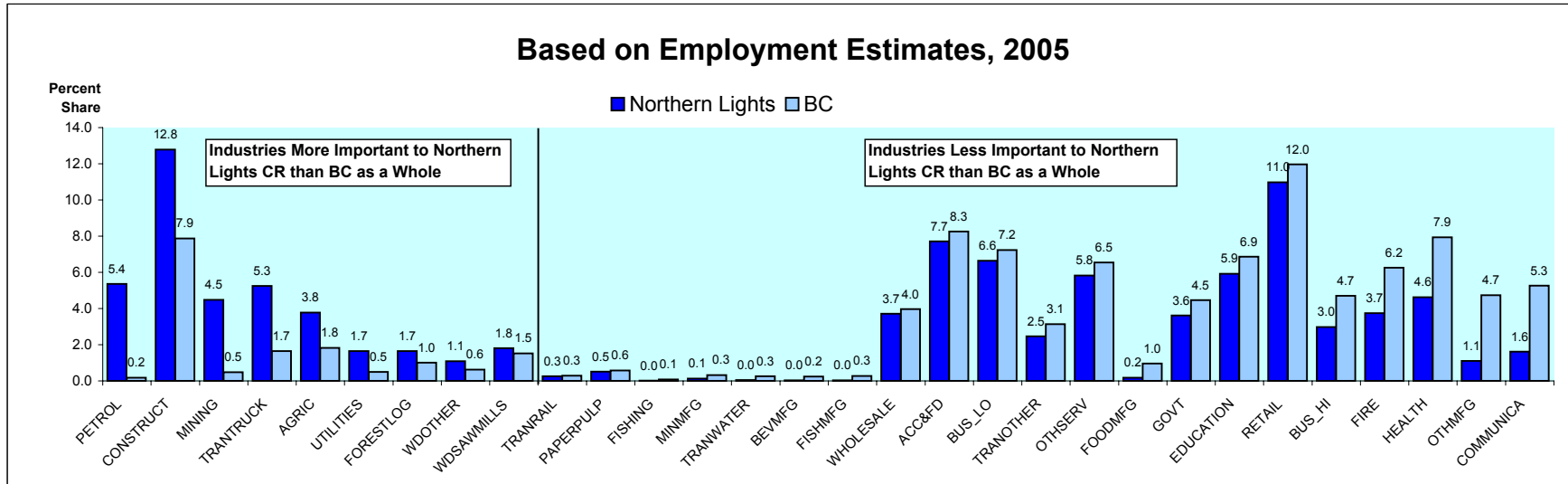
	Estimated Employment	Projected Employment Levels		Average Annual % Chg			Avg Annual % Chg Over 4 Years
	<u>2005</u>	<u>2009</u>	<u>2010</u>	<u>2007/2005</u>	<u>2009/2007</u>	<u>2010/2009</u>	<u>2009/2005</u>
	Northern Lights	34,708	39,046	39,220	3.1	2.9	0.4
Northwest	34,597	38,531	39,845	2.3	3.2	3.4	2.8
Okanagan	175,281	193,888	201,600	2.3	2.9	4.0	2.7
Rockies	37,929	41,910	43,335	2.3	2.8	3.4	2.6
Fraser Valley	120,271	130,067	133,725	1.8	2.2	2.8	2.0
Lower Mainland	1,182,258	1,278,495	1,327,306	2.1	1.9	3.8	2.0
New Caledonia	75,311	81,207	83,482	1.8	2.0	2.8	2.0
Thompson Rivers	85,651	92,310	94,914	1.8	2.0	2.8	1.9
Selkirk	36,829	39,421	40,304	1.5	2.0	2.2	1.8
Malaspina	109,580	117,129	120,067	1.4	2.0	2.5	1.7
Camosun	167,460	177,149	181,894	1.3	1.6	2.7	1.4
North Island	70,227	73,956	75,509	1.2	1.4	2.1	1.3
Total	2,130,101	2,303,108	2,381,200	2.0	2.0	3.4	2.0



Industrial Structure in the Northern Lights College Region Compared with BC

Percent Share of Employment by Industry

Ranked by the Percentage Point Difference in the Industry Share in the College Region Compared with BC



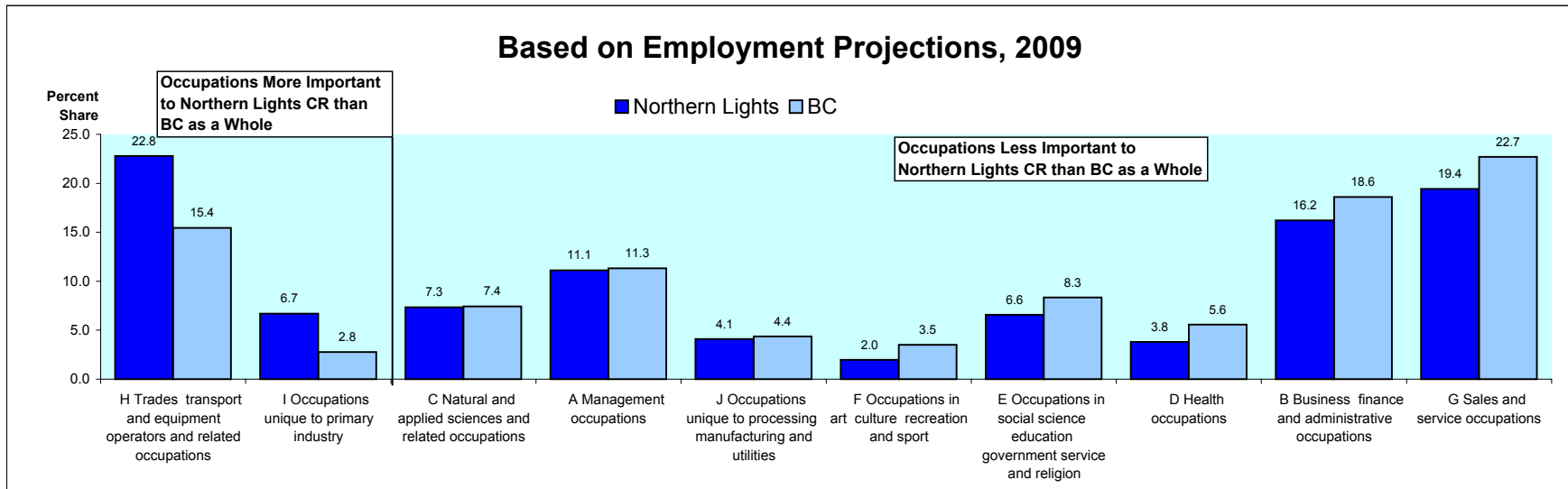
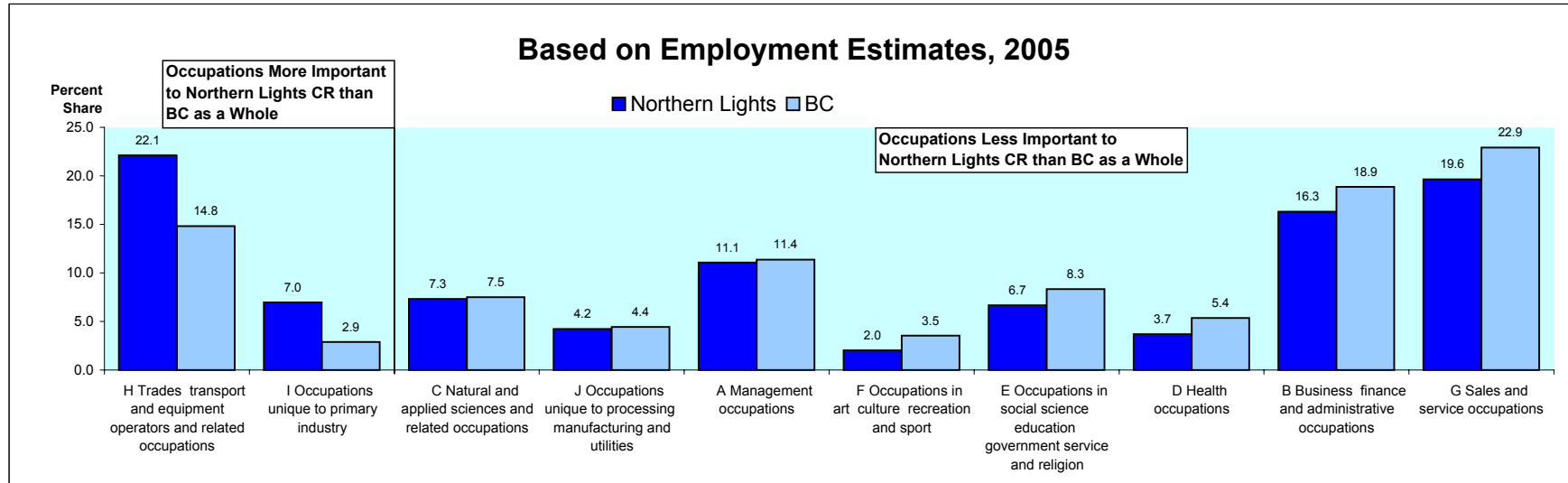
Northern Lights College Region

	Estimated	Projected		Average Annual % Chg			Avg Annual % Chg
	Employment	Employment Levels					Over 4 Years
	<u>2005</u>	<u>2009</u>	<u>2010</u>	<u>2007/2005</u>	<u>2009/2007</u>	<u>2010/2009</u>	<u>2009/2005</u>
ACC&FD	2,674	3,032	3,173	3.0	3.5	4.7	3.3
AGRIC	1,312	1,345	1,404	0.9	0.4	4.4	0.6
BEVMFG	10	11	11	4.0	1.7	1.0	2.9
BUS_HI	1,034	1,208	1,198	4.6	3.5	-0.8	4.2
BUS_LO	2,307	2,563	2,463	3.7	1.7	-3.9	2.8
COMMUNICA	562	607	607	2.2	1.7	0.0	2.0
CONSTRUCT	4,436	5,421	5,079	3.6	7.0	-6.3	5.6
EDUCATION	2,056	2,230	2,261	2.4	1.7	1.4	2.1
FIRE	1,297	1,424	1,435	3.3	1.5	0.8	2.4
FISHING	-	-	-	-	-	-	-
FISHMFG	-	-	-	-	-	-	-
FOODMFG	59	67	67	4.8	1.6	-0.2	3.3
FORESTLOG	575	591	586	1.8	-0.4	-0.9	0.7
GOVT	1,254	1,321	1,336	1.3	1.3	1.1	1.3
HEALTH	1,604	1,919	2,033	4.4	5.0	6.0	4.9
MINING	1,554	1,749	1,827	3.1	3.0	4.4	3.1
MINMFG	42	43	43	0.5	0.1	0.2	0.3
OTHMFG	383	409	436	1.2	2.1	6.6	1.7
OTHSERV	2,022	2,231	2,312	2.7	2.3	3.6	2.6
PAPERPULP	180	193	194	2.2	1.2	0.5	1.8
PETROL	1,862	2,251	2,110	6.1	3.9	-6.3	5.2
PETROLMFG	-	-	-	-	-	-	-
RETAIL	3,810	4,166	4,309	2.9	1.6	3.4	2.3
TRANOTHER	853	982	984	3.8	3.5	0.2	3.8
TRANRAIL	88	102	102	4.2	3.4	-0.1	3.9
TRANTRUCK	1,822	2,046	2,057	3.1	2.8	0.6	3.1
TRANWATER	17	19	20	4.5	3.2	0.9	4.0
UTILITIES	574	627	624	2.8	1.8	-0.6	2.3
WDOTHER	377	386	406	0.4	0.8	5.2	0.6
WDSAWMILLS	628	644	677	0.4	0.8	5.2	0.6
WHOLESALE	1,288	1,419	1,425	2.6	2.3	0.4	2.5
ALL INDUSTRIES	34,708	39,046	39,220	3.1	2.9	0.4	3.1

Occupational Structure in the Northern Lights College Region Compared with BC

Percent Share of Employment by Occupation

Ranked by the Percentage Point Difference in the Occupation Share in the College Region Compared with BC



Northern Lights College Region

Projected Annual Growth Rates in Occupational Demand

	Estimated Employment	Average Annual % Change			Avg Annual % Chg Over 4 Years
	<u>2005</u>	<u>2007/2005</u>	<u>2009/2007</u>	<u>2010/2009</u>	<u>2009/2005</u>
All occupations	34,708	3.1	2.9	0.4	3.1
A Management occupations	3,844	3.2	3.0	0.2	3.2
B Business finance and administrative occupations	5,656	3.2	2.6	0.0	3.0
C Natural and applied sciences and related occupations	2,537	3.6	2.6	-1.7	3.2
D Health occupations	1,279	3.8	3.9	4.5	4.0
E Occupations in social science education government service and religion	2,315	2.9	2.3	1.5	2.7
F Occupations in art culture recreation and sport	702	2.9	2.1	-0.1	2.5
G Sales and service occupations	6,817	2.9	2.5	3.2	2.8
H Trades transport and equipment operators and related occupations	7,675	3.3	4.3	-2.0	4.0
I Occupations unique to primary industry	2,419	2.5	1.6	1.2	2.1
J Occupations unique to processing manufacturing and utilities	1,464	2.6	2.1	1.1	2.4

Projected Annual Growth Rates in Occupational Demand (2-digits)

Northern Lights College Region

Projected Annual Growth Rates in Occupational Demand

	Estimated Employment	Average Annual % Change			Avg Annual % Chg Over 4 Years
	<u>2005</u>	<u>2007/2005</u>	<u>2009/2007</u>	<u>2010/2009</u>	<u>2009/2005</u>
All occupations	34,708	3.1	2.9	0.4	3.1
A2 Managers in retail trade food and accommodation services	491	3.3	2.9	-0.7	3.2
A3 Other managers n.e.c.	754	3.1	2.5	-0.1	2.9
B0 Professional occupations in business and finance	1,201	3.0	2.4	3.4	2.8
B1 Finance and insurance administration occupations	1,392	3.4	3.9	-1.9	3.7
B2 Secretaries	925	3.5	2.2	-0.9	2.9
B3 Administrative and regulatory occupations	590	3.3	2.7	-0.7	3.1
B4 Clerical supervisors	760	3.4	3.0	-0.5	3.3
B5 Clerical occupations	612	3.1	2.9	-0.3	3.1
C0 Professional occupations in natural and applied sciences	111	3.0	2.2	0.8	2.7
C1 Technical occupations related to natural and applied sciences	2,658	3.1	2.5	0.6	2.9
D0 Professional occupations in health	1,433	3.8	2.5	-2.0	3.2
D1 Nurse supervisors and registered nurses	1,105	3.4	2.7	-1.3	3.2
D2 Technical and related occupations in health	299	3.7	3.7	4.4	3.8
D3 Assisting occupations in support of health services	315	3.9	4.2	5.2	4.2
E0 Judges, lawyers, psychologists, social workers, ministers of religion & policy/program officers	349	3.8	3.7	3.4	3.9
E1 Teachers and professors	311	3.8	3.9	5.1	4.0
E2 Paralegals, social services workers & occup. in educ. & religion n.e.c.	663	3.3	2.5	0.3	3.0
F0 Professional occupations in art and culture	1,101	2.4	1.8	1.4	2.1
F1 Technical occupations in art, culture, recreation and sport	551	3.4	3.1	3.0	3.4
G0 Sales and service supervisors	281	2.8	2.0	0.0	2.4
G1 Wholesale, technical, insurance, real estate sales specialists & retail, wholesale and grain buyers	422	3.0	2.1	-0.2	2.6
G2 Retail salespersons and sales clerks	200	3.0	2.6	3.5	2.9
G3 Cashiers	549	2.9	2.2	0.5	2.6
G4 Chefs and cooks	1,244	2.9	1.8	3.0	2.4
G5 Occupations in food and beverage service	544	2.9	1.9	3.5	2.5

Northern Lights College Region

Projected Annual Growth Rates in Occupational Demand

	Estimated Employment	Average Annual % Change			Avg Annual % Chg Over 4 Years
	<u>2005</u>	<u>2007/2005</u>	<u>2009/2007</u>	<u>2010/2009</u>	<u>2009/2005</u>
G6 Occupations in protective services	524	3.1	3.4	4.2	3.4
G7 Occup. in travel & accommodation incl. attendants in recreation & sport	657	3.0	3.4	4.5	3.3
G8 Childcare and home support workers	279	1.7	1.6	1.4	1.7
G9 Sales and service occupations n.e.c.	234	3.3	3.2	1.8	3.3
H0 Contractors and supervisors in trades and transportation	519	3.0	2.8	3.5	3.0
H1 Construction trades	2,061	3.0	2.7	3.5	2.9
H2 Stationary engineers, power stn operators & electrical trades & telecom.	418	3.6	5.4	-4.1	4.7
H3 Machinists, metal forming, shaping and erecting occupations	1,740	3.5	6.4	-5.5	5.2
H4 Mechanics	578	3.5	4.6	-3.2	4.2
H5 Other trades n.e.c.	379	3.3	4.1	-1.4	3.9
H6 Heavy equipment and crane operators including drillers	929	3.0	2.9	1.2	3.0
H7 Transport equipment operators & related workers, excl. labourers	281	2.9	3.5	-0.4	3.3
H8 Trades helpers, construction and transport labourers & related	571	3.5	4.5	-2.0	4.2
I0 Occupations unique to agriculture, excluding labourers	1,873	3.2	2.9	0.5	3.2
I1 Occup. unique to forestry ops, mining, oil & gas extraction, fishing excl. labourers	907	3.1	4.3	-2.1	3.9
I2 Primary production labourers	1,103	0.9	0.5	4.1	0.7
J0 Supervisors in manufacturing	801	3.9	2.6	-1.3	3.4
J1 Machine operators in manufacturing	511	3.3	2.2	-0.7	2.9
J2 Assemblers in manufacturing	155	3.3	2.4	-0.4	3.0
J3 Labourers in processing, manufacturing and utilities	724	3.1	2.3	0.2	2.8

Appendix 1

Summary of Methodology for the British Columbia Regional Employment Projection Model (REPM)

The methodology used in the model has come largely from previous work on community dependencies carried out earlier by BC STATS. The fundamental premise is that the economy of a region can be represented by income flows that can be classified as “basic” (or driver) and “non-basic” (or support) depending on the source of the income.

The model calculates indirect employment effects from employment changes in the basic sectors using multipliers based in inter-industry linkages from the British Columbia Input-Output Model. Similarly, non-basic, or induced effects are calculated using an income-to-non-basic-jobs ratio.

The current version of the model is benchmarked to the 2001 Census employment by Regional District, and is projected forward up to the most up-to-date annual employment data from the Labour Force Survey. The growth rates from the Labour Force Survey (LFS) at the provincial level for the basic industries are used to project growth down to the Regional District level. The model then calculates the indirect jobs based on the Regional District specific multipliers. The direct and indirect employment levels are then used to calculate the wages and salaries earned in the basic industries which in turn are converted to employment in the non-basic industries through the income to support-industry job multipliers. As well, transfer payments and investment income are also converted to employment in the non-basic industries using the same multipliers. The output from the model is then benchmarked to the LFS industry numbers at the BC level as well as to the LFS regional employment numbers for the Development Regions and the Capital and Greater Vancouver Regional Districts. In the current version of the model, the employment numbers are reconciled up to the 2005 annual averages from the LFS.

Once the model is brought up to the most current employment levels, then the forecast is carried out for five to ten years further. The industrial employment projections from the Canadian Occupational Projection System (COPS) are now used as the source data for the industrial growth, both in determining the growth rates in the direct employment and then as a benchmark on which to reconcile the industrial employment generated by the model.

While the total employment is forced to the COPS employment levels, there is leeway to adjust growth rates by industry across the sub-provincial regions. There are some standard variables that are used to differentiate the outlook for

the regions. For example, the growth in the education sector is dictated by the projected K-12 and post-secondary population growth in the relevant age groups. Government Services is projected in line with the total population projections for the Regional Districts. Employment in the Health Sector is so often governed by the growth in the senior's population as are the transfer payments flowing in. (CPP and OAS is a large component of transfer payments). As well, pensions from private pension plans are considered investment income meaning seniors receive a high proportion of the total investment income in a region.

An important determining factor of growth by region is the major projects coming on stream in the outlook timeframe. Firstly they impact construction employment and secondly many will impact specific industries once they move into the production phase. In BC, we are dealing with the preparations for the 2010 Winter Games so many of the construction occupations will be in short supply.

The intent is to update the REPM annually, based on another year of LFS data plus a new COPS forecast. Currently, there is a demand for economic forecasts by occupation at the college region level. College Regions are aggregations of sub-sets of Regional Districts. Occupational forecasts are being produced at the college region level. In the appendix there is a conversion table which outlines which Regional District belongs to which College Region.

The model is only as good as the input data assumptions. Our reliance on good quality data from COPS is very important. Users of the data who perceive any problems with the assumptions in the model or question the quality of any of the data series being used should contact BC STATS at bcstats@gov.bc.ca.

May 2, 2006

Appendix 2

COPS INDUSTRY CONVERSION TO REPM

REPM INDUSTRY	COPS INDUSTRY	% of COPS INDUSTRY
ACC&FD	31 Accommodation and food services	100
AGRIC	1 Agriculture	100
BEVMFG	9 Food and Beverage Products	16
BUS_HI	25 Computer System Design Services	100
BUS_HI	24 Professional Business Services	50
BUS_HI	26 Other Professional Services	50
BUS_LO	27 Management, Administrative and Other Support	100
BUS_LO	24 Professional Business Services	50
BUS_LO	26 Other Professional Services	50
COMMUNICA	30 Information, culture and recreation	100
CONSTRUCT	8 Construction	100
EDUCATION	28 Educational Services	100
FIRE	23 Finance, Insurance, Real Estate and Leasing	100
FISHING	3 Fishing, Hunting and Trapping	100
FISHMFG	9 Food and Beverage Products	18
FOODMFG	9 Food and Beverage Products	66
FORESTLOG	2 Forestry and Logging with support activities	100
GOVT	33 Public administration	100
HEALTH	29 Health Care and Social Assistance	75
MINING	5 Mining (except Oil and Gas)	100
MINING	6 Support Activities for Mining and Oil and Gas Extraction	67
MINMFG	14 Manufactured Mineral Products	50
OTHMFG	12 Printing and Related Support Activities	100
OTHMFG	13 Rubber, Plastics and Chemicals	100
OTHMFG	14 Manufactured Mineral Products	50
OTHMFG	15 Metal Fabrication and Machinery (excluding electrical)	100
OTHMFG	16 Computer, Electronic and Electrical Products	100
OTHMFG	17 Motor Vehicle, Body, Trailer & Parts Manufacturing	100
OTHMFG	18 Other Transportation Equipment Manufacturing	100
OTHSERV	29 Health Care and Social Assistance	25
OTHSERV	32 Other services	100

COPS INDUSTRY CONVERSION TO REPM

REPM INDUSTRY	COPS INDUSTRY	% of COPS INDUSTRY
PAPERPULP	11 Paper Manufacturing	100
PETROL	4 Oil and Gas Extraction	100
PETROL	6 Support Activities for Mining and Oil and Gas Extraction	33
PETROLMFG	19 Other Manufacturing	7
RETAIL	21 Retail Trade	100
TRANOTHER	22 Transportation and Warehousing	59
TRANRAIL	22 Transportation and Warehousing	5
TRANTRUCK	22 Transportation and Warehousing	31
TRANWATER	22 Transportation and Warehousing	5
UTILITIES	7 Utilities	100
WDOTHER	10 Wood Product Manufacturing	29
WDSAWMILLS	10 Wood Product Manufacturing	71
WHOLESALE	20 Wholesale Trade	100

Appendix 3

REGIONAL DISTRICT TO COLLEGE REGION CONVERSION FOR REPM

COLLEGE REGION	REGIONAL DISTRICT #	REGIONAL DISTRICT NAME	% of REGIONAL DISTRICT
CAMOSUN	17	Capital	100
FRASER VALLEY	9	Fraser Valley	100
LOWER MAINLAND	15	Greater Vancouver	100
LOWER MAINLAND	29	Sunshine Coast	100
LOWER MAINLAND	31	Squamish Lillooet	87
MALASPINA	19	Cowichan Valley	100
MALASPINA	21	Nanaimo	100
MALASPINA	27	Powell River	100
NEW CALEDONIA	41	Cariboo	37
NEW CALEDONIA	51	Bulkley Nechako	61
NEW CALEDONIA	53	Fraser-Fort George	100
NORTH ISLAND	23	Alberni-Clayoquot	100
NORTH ISLAND	25	Comox Strathcona	100
NORTH ISLAND	43	Mount Waddington	100
NORTH ISLAND	45	Central Coast	100
NORTHERN LIGHTS	49	Kitimat Stikine	2
NORTHERN LIGHTS	55	Peace River	100
NORTHERN LIGHTS	57	Stikine	100
NORTHERN LIGHTS	59	Northern Rockies	100
NORTHWEST	47	Skeena-Queen Charlotte	100
NORTHWEST	49	Kitimat Stikine	98
NORTHWEST	51	Bulkley Nechako	39
OKANAGAN	7	Okanagan-Similkameen	100
OKANAGAN	35	Central Okanagan	100
OKANAGAN	37	North Okanagan	100
OKANAGAN	39	Columbia Shushwap	85
ROCKIES	1	East Kootenay	100
ROCKIES	3	Central Kootenays	20
ROCKIES	39	Columbia Shushwap	15
SELKIRK	3	Central Kootenays	80
SELKIRK	5	Kootenay Boundary	100
THOMPSON RIVERS	31	Squamish Lillooet	13
THOMPSON RIVERS	33	Thompson Nicola	100
THOMPSON RIVERS	41	Cariboo	63

Appendix 4

Projected Annual Growth Rates in Occupational Demand (3-digit)

Northern Lights College Region

Projected Annual Growth Rates in Occupational Demand

	Estimated Employment	Average Annual % Change			Avg Annual % Chg Over 4 Years
	<u>2005</u>	<u>2007/2005</u>	<u>2009/2007</u>	<u>2010/2009</u>	<u>2009/2005</u>
All occupations	34,708	3.1	2.9	0.4	3.1
A01.001 Legislators and Senior Management	495	3.4	2.9	-0.8	3.2
A11.011 Administrative Services Managers	254	3.1	2.5	0.2	2.9
A12.021 Managers in Engineering, Architecture, Science & Information Systems	123	3.4	2.4	-1.5	3.0
A13.061 Sales, Marketing and Advertising Managers	268	3.1	2.5	-0.1	2.8
A14.072 Facility Operation and Maintenance Managers	116	3.2	2.7	0.3	3.0
A21.062 Managers in Retail Trade	784	2.9	1.9	2.9	2.5
A22.063 Managers in Food Service and Accommodation	419	3.0	3.4	4.5	3.3
A30.012 Managers in Financial and Business Services	204	3.4	1.9	0.0	2.7
A31.013 Managers in Communication (Except Broadcasting)	15	2.9	2.5	-0.5	2.8
A32.031 Managers in Health, Education, Social and Community Services	142	2.8	2.5	2.4	2.7
A33.041 Managers in Public Administration	21	1.8	1.6	1.5	1.7
A34.051 Managers in Art, Culture, Recreation and Sport	24	2.4	2.0	0.8	2.3
A35.064 Managers in Protective Service	26	1.4	1.3	1.1	1.3
A36.065 Managers in Other Services	47	3.0	2.7	1.4	2.9
A37.071 Managers in Construction and Transportation	609	3.6	5.9	-4.7	4.9
A38.081 Managers in Primary Production (Except Agriculture)	181	4.3	2.9	-1.6	3.7
A39.091 Managers in Manufacturing and Utilities	129	2.6	2.1	1.0	2.4
B01.111 Auditors, Accountants and Investment Professionals	749	3.5	2.2	-0.8	2.9
B02.112 Human Resources and Business Service Professionals	174	3.4	2.3	-0.9	2.9
B11.123 Finance and Insurance Administrative Occupations	588	3.3	2.7	-0.7	3.1
B21.124 Secretaries, Records and Transcriptionists	760	3.4	3.0	-0.5	3.3
B31.122 Administrative and Regulatory Occupations	613	3.1	2.9	-0.2	3.1
B41.121 Clerical Supervisors	111	3.0	2.2	0.8	2.7
B51.141 Clerical Occupations, General Office Skills	906	3.2	2.8	0.4	3.1
B52.142 Office Equipment Operators	93	2.8	2.2	0.7	2.6
B53.143 Finance and Insurance Clerks	656	3.2	2.1	0.3	2.7
B54.144 Administrative Support Clerks	170	3.0	2.5	0.6	2.9
B55.145 Library Correspondence and Related Information Clerks	287	2.7	1.9	1.1	2.4

Northern Lights College Region

Projected Annual Growth Rates in Occupational Demand

	Estimated Employment	Average Annual % Change			Avg Annual % Chg Over 4 Years
	<u>2005</u>	<u>2007/2005</u>	<u>2009/2007</u>	<u>2010/2009</u>	<u>2009/2005</u>
B56.146 Mail and Message Distribution Occupations	151	3.5	2.9	0.6	3.3
B57.147 Recording, Scheduling and Distributing Occupations	390	3.1	2.5	0.9	2.9
C01.211 Physical Science Professionals	198	4.6	3.2	-2.0	4.1
C02.212 Life Science Professionals	123	2.6	1.4	-0.5	2.1
C03.213 Civil, Mechanical, Electrical and Chemical Engineers	286	3.8	2.9	-2.5	3.5
C04.214 Other Engineers	138	4.1	2.7	-2.1	3.5
C05.215 Architects, Urban Planners and Land Surveyors	116	3.7	2.9	-2.9	3.4
C06.216 Mathematicians, Statisticians and Actuaries	-	-	-	-	-
C07.217 Computer and Information Systems Professionals	574	3.7	2.2	-1.8	3.0
C11.221 Technical Occupations in Physical Sciences	130	4.3	3.1	-1.1	3.9
C12.222 Technical Occupations in Life Sciences	152	2.1	1.1	0.1	1.6
C13.223 Technical Occupations in Civil, Mechanical & Industrial Engineering	118	3.5	4.8	-4.1	4.3
C14.224 Technical Occupations in Electronics and Electrical Engineering	186	3.2	2.8	-0.3	3.1
C15.225 Technical Occupations in Architecture, Drafting, Surveying & Mapping	160	3.7	2.6	-2.5	3.3
C16.226 Other Technical Inspectors and Regulatory Officers	94	3.7	3.2	-2.0	3.6
C17.227 Transportation Officers and Controllers	84	3.7	3.1	-0.4	3.5
C18.228 Technical Occupations in Computer and Information Systems	183	3.4	2.1	-0.7	2.9
D01.311 Physicians Dentists and Veterinarians	150	3.9	4.0	4.3	4.1
D02.312 Optometrists, Chiropractors & Other Health Diagnosing/Treating Profs.	19	3.8	4.1	5.3	4.1
D03.313 Pharmacists, Dietitians and Nutritionists	65	3.2	2.4	3.8	2.9
D04.314 Therapy and Assessment Professionals	65	3.8	4.1	5.0	4.1
D11.315 Nurse Supervisors and Registered Nurses	315	3.9	4.2	5.2	4.2
D21.321 Medical Technologists and Technicians (Except Dental Health)	131	3.8	3.6	3.3	3.9
D22.322 Technical Occupations in Dental Health Care	32	3.6	4.0	5.4	3.9
D23.323 Other Technical Occupations in Health Care (Except Dental)	187	3.8	3.6	3.2	3.8
D31.341 Assisting Occupations in Support of Health Services	319	3.8	3.9	4.8	4.0
E01.411 Judges, Lawyers and Quebec Notaries	204	3.8	2.2	-2.5	3.1
E02.415 Psychologists, Social Workers, Counsellors, Clergy & Probation Officers	209	3.0	3.0	3.8	3.1
E03 Policy and program officers researchers and consultants	253	3.2	2.3	-0.2	2.8
E11.412 University Professors and Assistants	147	2.5	1.8	1.3	2.2

Northern Lights College Region

Projected Annual Growth Rates in Occupational Demand

	Estimated Employment	Average Annual % Change			Avg Annual % Chg Over 4 Years
	<u>2005</u>	<u>2007/2005</u>	<u>2009/2007</u>	<u>2010/2009</u>	<u>2009/2005</u>
E12.413 College and Other Vocational Instructors	176	2.5	1.8	1.3	2.2
E13.414 Secondary and Elementary School Teachers & Educational Counsellors	778	2.4	1.7	1.4	2.1
E21.421 Paralegals, Social Services Workers & Occupations in Education & Religion n.e.c.	551	3.4	3.2	3.0	3.4
F01 Librarians, archivists, conservators and curators	16	2.4	1.9	0.1	2.2
F02.512 Writing, Translating and Public Relations Professionals	131	3.2	2.1	-0.7	2.7
F03.513 Creative and Performing Artists	132	2.4	1.8	0.8	2.1
F11.521 Technical Occupations in Libraries, Archives Museums & Art Galleries	24	2.4	2.1	0.1	2.3
F12.522 Photographers, Graphic Arts Technicians & Technical & coordinating Occupations in Motion Pictures Broadcasting & Performing	79	3.2	2.1	-1.3	2.7
F13.523 Announcers and Other Performers	14	2.5	2.2	1.4	2.4
F14.524 Creative Designers and Craftspersons	199	3.3	2.3	-0.9	2.9
F15.525 Athletes, Coaches, Referees and Related Occupations	106	2.3	2.0	1.6	2.2
G01.621 Sales and Service Supervisors	200	3.0	2.6	3.5	2.9
G11.641 Sales Representatives, Wholesale Trade	290	2.7	2.3	0.6	2.6
G12.622 Technical Sales Specialists, Wholesale Trade	92	2.9	2.6	-0.1	2.8
G13.623 Insurance and Real Estate Sales Occupations and Buyers	168	3.2	1.9	0.7	2.6
G21.642 Retail Salespersons and Sales Clerks	1,244	2.9	1.8	3.0	2.4
G31.661 Cashiers	544	2.9	1.9	3.5	2.5
G41.624 Chefs and Cooks	524	3.1	3.4	4.2	3.4
G51.645 Occupations in Food and Beverage Service	657	3.0	3.4	4.5	3.3
G61.626 Police Officers and Fire-fighters	127	1.4	1.4	1.1	1.4
G62.646 Other Occupations in Protective Service	109	1.7	1.6	1.2	1.7
G63.665 Security Guards and Related Occupations	43	2.6	2.4	2.7	2.6
G71.643 Occupations in Travel and Accommodation	170	3.5	3.4	1.9	3.6
G72.644 Tour and Recreational Guides and Casino Occupations	30	2.7	2.4	1.0	2.6
G73.667 Other Occupations in Travel Accommodation, Amusement & Recreation	33	2.7	2.7	2.0	2.8
G81.647 Childcare and Home Support Workers	519	3.0	2.8	3.5	3.0
G91.627 Technical Occupations in Personal Service	163	2.7	2.3	3.6	2.6
G92.648 Other Occupations in Personal Service	92	2.7	2.1	3.2	2.5

Northern Lights College Region

Projected Annual Growth Rates in Occupational Demand

	Estimated Employment	Average Annual % Change			Avg Annual % Chg Over 4 Years
	<u>2005</u>	<u>2007/2005</u>	<u>2009/2007</u>	<u>2010/2009</u>	<u>2009/2005</u>
G93.666 Cleaners	501	2.9	3.0	2.7	3.1
G94.625 Butchers and Bakers	127	3.1	2.0	3.2	2.6
G96.664 Food Counter Attendants, Kitchen Helpers & Related Occupations	633	3.1	3.4	4.5	3.4
G97.662 Other Sales and Related Occupations	470	3.0	1.7	3.1	2.4
G98.668 Other Elemental Service Occupations	80	2.9	2.6	3.5	2.8
H01.721 Contractors and Supervisors, Trades and Related Workers	390	3.6	5.6	-4.4	4.8
H02.722 Supervisors, Railway and Motor Transportation Occupations	26	3.5	3.1	0.3	3.4
H11.725 Plumbers, Pipefitters and Gas Fitters	282	3.7	5.9	-5.0	5.0
H12.727 Carpenters and Cabinetmakers	714	3.5	6.3	-5.3	5.1
H13.728 Masonry and Plastering Trades	277	3.6	6.9	-6.2	5.5
H14.729 Other Construction Trades	468	3.6	6.6	-5.8	5.3
H21.724 Electrical Trades and Telecommunications Occupations	520	3.4	4.8	-3.4	4.3
H22.735 Stationary Engineers and Power Station and System Operators	58	3.8	2.7	-1.5	3.3
H31.723 Machinists and Related Occupations	39	2.1	2.4	3.3	2.3
H32.726 Metal Forming, Shaping and Erecting Trades	341	3.4	4.3	-1.9	4.0
H41.731 Machinery & Transportation Equipment Mechanics (Except Motor Vehicle)	545	3.1	3.2	0.3	3.3
H42.732 Automotive service technicians	334	2.9	2.3	2.6	2.7
H43.733 Other Mechanics	57	3.4	3.0	0.6	3.3
H51.734 Upholsterers, Tailors, Shoe Repairers, Jewellers & Related Occupations	48	2.7	2.2	3.3	2.5
H52.738 Printing Press Operators, Commercial Divers & Other Trades & Related Occupations n.e.c.	44	1.5	1.8	3.1	1.7
H53.744 Other installers repairers and servicers	189	3.3	4.1	-2.1	3.9
H61.742 Heavy Equipment Operators	484	3.6	4.5	-2.0	4.2
H62.737 Crane Operators Drillers and Blasters	89	3.6	4.5	-2.3	4.2
H71.741 Motor Vehicle and Transit Drivers	1,783	3.2	2.9	0.5	3.1
H72.736 Train Crew Operating Occupations	31	4.1	3.3	0.0	3.8
H73.743 Other Transport Equipment Operators and Related Workers	61	3.5	3.1	0.2	3.4
H81.745 Longshore Workers and Material Handlers	412	2.7	2.4	1.3	2.7
H82.761 Trades Helpers and Labourers	440	3.6	6.2	-5.2	5.1

Northern Lights College Region

Projected Annual Growth Rates in Occupational Demand

	Estimated Employment	Average Annual % Change			Avg Annual % Chg Over 4 Years
	<u>2005</u>	<u>2007/2005</u>	<u>2009/2007</u>	<u>2010/2009</u>	<u>2009/2005</u>
H83.762 Public Works and Other Labourers n.e.c.	60	2.9	3.1	-1.0	3.1
I01.825 Contractors, Operators & Supervisors in Agriculture, Horticulture & Aquaculture	604	1.0	0.5	4.1	0.7
I02.843 Agriculture and Horticulture Workers	501	0.9	0.4	4.2	0.7
I11.821 Supervisors, Logging and Forestry	39	1.6	0.2	0.2	0.9
I12.822 Supervisors, Mining Oil and Gas	209	4.7	3.5	-1.6	4.3
I13.823 Underground Miners, Oil and Gas Drillers and Related Workers	188	4.4	3.3	-0.2	4.0
I14.841 Mine Service Workers and Operators in Oil and Gas Drilling	176	5.3	3.6	-3.4	4.6
I15.824 Logging Machinery Operators	71	1.9	0.5	-0.1	1.2
I16.842 Logging and Forestry Workers	121	2.1	0.3	-1.0	1.3
I17.826 Fishing Vessel Masters and Skippers and Fishermen/women	5	1.7	1.4	6.0	1.6
I18.844 Other Fishing and Trapping Occupations	2	1.8	1.8	5.9	1.8
I21.861 Primary Production Labourers	514	3.4	2.3	-0.8	2.9
J01.921 Supervisors, Processing Occupations	134	3.6	2.5	-0.8	3.1
J02.922 Supervisors, Assembly and Fabrication	21	1.5	2.2	2.9	1.9
J11.923 Central Control & Process Operators in Manufacturing & Processing	237	5.9	3.6	-5.0	4.9
J12.941 Machine Operators & Related Workers in Metal & Mineral Products Processing	59	2.9	3.2	1.7	3.2
J13.942 Machine Operators & Related Workers in Chemical, Plastic & Rubber Processing	40	3.5	2.5	-1.2	3.1
J14.943 Machine Operators & Related Workers in Pulp & Paper Production & Wood Processing	239	0.8	1.0	4.1	0.9
J15.944 Machine Operators and Related Workers in Textile Processing	-	-	-	-	-
J16.945 Machine Operators and Related Workers in Fabric, Fur & Leather Products Manufacturing	30	1.9	2.1	4.2	2.0
J17.946 Machine Operators & Related Workers in Food, Beverage & Tobacco Processing	27	3.4	1.7	1.2	2.6
J18.947 Printing Machine Operators and Related Occupations	44	2.7	2.1	2.8	2.4
J19.951 Machining, Metalworking, Woodworking & Related Machine Operators	42	1.2	1.8	3.5	1.5
J21.948 Mechanical Electrical and Electronics Assemblers	50	2.9	2.8	1.1	2.9

Northern Lights College Region

Projected Annual Growth Rates in Occupational Demand

	Estimated Employment	Average Annual % Change			Avg Annual % Chg Over 4 Years
	<u>2005</u>	<u>2007/2005</u>	<u>2009/2007</u>	<u>2010/2009</u>	<u>2009/2005</u>
J22.949 Other Assembly and Related Occupations	121	1.9	2.6	2.2	2.3
J31.961 Labourers in Processing Manufacturing and Utilities	412	1.5	1.5	3.1	1.5

Appendix 5

Projected Annual Growth Rates in Occupational Demand (4-digit)

Northern Lights College Region

Projected Annual Growth Rates in Occupational Demand

	Estimated Employment	Average Annual % Change			Avg Annual % Chg Over 4 Years
	<u>2005</u>	<u>2007/2005</u>	<u>2009/2007</u>	<u>2010/2009</u>	<u>2009/2005</u>
All occupations	34,708	3.1	2.9	0.4	3.1
A Management occupations	3,844	3.2	3.0	0.2	3.2
A0 Senior management occupations	491	3.3	2.9	-0.7	3.2
A01.001 Legislators and Senior Management	495	3.4	2.9	-0.8	3.2
A011.0011 Legislators	12	1.5	1.4	1.2	1.5
A012.0012 Senior Government Managers and Officials	37	1.8	1.7	0.7	1.8
A013.0013 Senior Managers - Financial, Communications and Other Business Services	120	3.8	2.0	-2.2	3.0
A014.0014 Senior Managers - Health, Education, Social and Community Services and Membership Organizations	36	3.1	2.9	3.7	3.0
A015.0015 Senior Managers - Trade, Broadcasting and Other Services n.e.c.	84	2.7	2.2	1.9	2.5
A016.0016 Senior Managers - Goods Production, Utilities, Transportation and Construction	201	3.8	4.0	-2.0	4.0
A1 Specialist managers	754	3.1	2.5	-0.1	2.9
A11.011 Administrative Services Managers	254	3.1	2.5	0.2	2.9
A111.0111 Financial Managers	132	3.2	2.5	-0.2	2.9
A112.0112 Human Resources Managers	51	3.2	2.3	0.6	2.8
A113.0113 Purchasing Managers	13	2.6	2.4	1.0	2.5
A114.0114 Other Administrative Services Managers	59	3.0	2.6	0.4	2.9
A12.021 Managers in Engineering, Architecture, Science and Information Systems	123	3.4	2.4	-1.5	3.0
A121.0211 Engineering Managers	34	3.4	2.8	-1.8	3.2
A122.0213 Computer and Information Systems Managers	72	3.4	2.1	-1.2	2.8
A123.0212 Architecture and Science Managers	16	3.9	2.7	-2.2	3.4
A13.061 Sales, Marketing and Advertising Managers	268	3.1	2.5	-0.1	2.8
A131.0611 Sales, Marketing and Advertising Managers	270	3.1	2.5	-0.1	2.8
A14.072 Facility Operation and Maintenance Managers	116	3.2	2.7	0.3	3.0
A141.0721 Facility Operation and Maintenance Managers	106	2.9	2.6	0.9	2.8

Northern Lights College Region

Projected Annual Growth Rates in Occupational Demand

	Estimated Employment	Average Annual % Change			Avg Annual % Chg Over 4 Years
	<u>2005</u>	<u>2007/2005</u>	<u>2009/2007</u>	<u>2010/2009</u>	<u>2009/2005</u>
A2 Managers in retail trade, food and accommodation services	1,201	3.0	2.4	3.4	2.8
A21.062 Managers in Retail Trade	784	2.9	1.9	2.9	2.5
A211.0621 Retail Trade Managers	784	2.9	1.9	2.9	2.5
A22.063 Managers in Food Service and Accommodation	419	3.0	3.4	4.5	3.3
A221.0631 Restaurant and Food Service Managers	313	3.0	3.4	4.4	3.3
A222.0632 Accommodation Service Managers	106	3.0	3.4	4.5	3.3
A3 Other managers n.e.c.	1,392	3.4	3.9	-1.9	3.7
A30.012 Managers in Financial and Business Services	204	3.4	1.9	0.0	2.7
A301.0121 Insurance, Real Estate and Financial Brokerage Managers	51	3.3	2.1	-0.2	2.8
A302.0122 Banking, Credit and Other Investment Managers	126	3.3	1.5	0.7	2.5
A303.0123 Other Business Services Managers	20	3.6	2.7	-1.7	3.2
A31.013 Managers in Communication (Except Broadcasting)	15	2.9	2.5	-0.5	2.8
A311.0131 Telecommunication Carriers Managers	12	2.7	2.3	-0.7	2.6
A312.0132 Postal and Courier Services Managers	-	-	-	-	-
A32.031 Managers in Health, Education, Social and Community Services	142	2.8	2.5	2.4	2.7
A321.0311 Managers in Health Care	33	3.8	4.0	4.5	4.0
A322.0312 Administrators - Post-Secondary Education and Vocational Training	33	2.5	1.8	1.3	2.2
A323.0313 School Principals and Administrators of Elementary and Secondary Education	56	2.4	1.7	1.4	2.1
A324.0314 Managers in Social, Community and Correctional Services	21	3.0	3.0	3.5	3.1
A33.041 Managers in Public Administration	21	1.8	1.6	1.5	1.7
A331.0411 Government Managers - Health and Social Policy Development and Program Administration	-	-	-	-	-
A332.0412 Government Managers - Economic Analysis, Policy Development and Program Administration	-	-	-	-	-
A333.0413 Government Managers - Education Policy Development and Program Administration	-	-	-	-	-
A334.0414 Other Managers in Public Administration	-	-	-	-	-
A34.051 Managers in Art, Culture, Recreation and Sport	24	2.4	2.0	0.8	2.3

Northern Lights College Region

Projected Annual Growth Rates in Occupational Demand

	Estimated Employment	Average Annual % Change			Avg Annual % Chg Over 4 Years
	<u>2005</u>	<u>2007/2005</u>	<u>2009/2007</u>	<u>2010/2009</u>	<u>2009/2005</u>
A341.0511 Library, Archive, Museum and Art Gallery Managers	-	-	-	-	-
A342.0512 Managers - Publishing, Motion Pictures, Broadcasting and Performing Arts	-	-	-	-	-
A343.0513 Recreation and Sports Program and Service Directors	11	2.2	2.0	1.6	2.1
A35.064 Managers in Protective Service	26	1.4	1.3	1.1	1.3
A351.0641 Commissioned Police Officers	-	-	-	-	-
A352.0642 Fire Chiefs and Senior Fire-fighting Officers	-	-	-	-	-
A353.0643 Commissioned Officers, Armed Forces	17	1.3	1.3	1.1	1.3
A36.065 Managers in Other Services	47	3.0	2.7	1.4	2.9
A361 0651 Other Services Managers	47	3.0	2.7	1.4	2.9
A37.071 Managers in Construction and Transportation	609	3.6	5.9	-4.7	4.9
A371.0711 Construction Managers	343	3.7	6.5	-5.9	5.4
A372.0712 Residential Home Builders and Renovators	144	3.6	6.8	-6.1	5.5
A373.0713 Transportation Managers	125	3.2	3.0	0.4	3.2
A38.081 Managers in Primary Production (Except Agriculture)	181	4.3	2.9	-1.6	3.7
A381.0811 Primary Production Managers (Except Agriculture)	177	4.2	2.9	-1.5	3.7
A39.091 Managers in Manufacturing and Utilities	129	2.6	2.1	1.0	2.4
A391.0911 Manufacturing Managers	75	2.0	1.9	3.2	2.0
A392.0912 Utilities Managers	56	3.8	2.5	-2.3	3.3
B Business, finance and administrative occupations	5,656	3.2	2.6	0.0	3.0
B0 Professional occupations in business and finance	925	3.5	2.2	-0.9	2.9
B01.111 Auditors, Accountants and Investment Professionals	749	3.5	2.2	-0.8	2.9
B011.1111 Financial Auditors and Accountants	483	3.6	2.5	-1.5	3.1
B012.1112 Financial and Investment Analysts	61	3.4	1.9	0.1	2.7
B013.1113 Securities Agents, Investment Dealers and Brokers	69	3.3	1.5	0.6	2.5
B014.1114 Other Financial Officers	139	3.3	1.6	0.3	2.5
B02.112 Human Resources and Business Service Professionals	174	3.4	2.3	-0.9	2.9
B021.1121 Specialists in Human Resources	65	2.9	2.1	1.1	2.6
B022.1122 Professional Occupations in Business Services to Management	109	3.7	2.3	-2.1	3.1

Northern Lights College Region

Projected Annual Growth Rates in Occupational Demand

	Estimated Employment	Average Annual % Change			Avg Annual % Chg Over 4 Years
	<u>2005</u>	<u>2007/2005</u>	<u>2009/2007</u>	<u>2010/2009</u>	<u>2009/2005</u>
B1 Finance and insurance administration occupations	590	3.3	2.7	-0.7	3.1
B11.123 Finance and Insurance Administrative Occupations	588	3.3	2.7	-0.7	3.1
B111.1231 Bookkeepers	441	3.4	3.1	-1.2	3.3
B112.1232 Loan Officers	44	3.3	1.5	0.8	2.4
B113.1233 Insurance Adjusters and Claims Examiners	65	3.3	1.5	0.7	2.5
B114.1234 Insurance Underwriters	17	3.3	1.5	0.7	2.5
B115.1235 Assessors, Valuers and Appraisers	12	2.1	1.7	0.5	1.9
B116.1236 Customs, Ship and Other Brokers	-	-	-	-	-
B2 Secretaries	760	3.4	3.0	-0.5	3.3
B21.124 Secretaries, Records and Transcriptionists	760	3.4	3.0	-0.5	3.3
B211.1241 Secretaries (Except Legal and Medical)	547	3.2	3.0	-0.6	3.2
B212.1242 Legal Secretaries	149	3.8	2.2	-2.5	3.1
B213.1243 Medical Secretaries	55	3.9	4.1	5.1	4.2
B214.1244 Court Recorders and Medical Transcriptionists	-	-	-	-	-
B3 Administrative and regulatory occupations	612	3.1	2.9	-0.3	3.1
B31.122 Administrative and Regulatory Occupations	613	3.1	2.9	-0.2	3.1
B311.1221 Administrative Officers	408	3.3	3.0	-0.5	3.3
B312.1222 Executive Assistants	60	3.4	2.7	-0.5	3.1
B313.1223 Personnel and Recruitment Officers	17	3.0	2.3	0.2	2.7
B314.1224 Property Administrators	27	3.1	3.7	-1.8	3.6
B315.1225 Purchasing Agents and Officers	44	2.6	2.6	1.2	2.7
B316.1226 Conference and Event Planners	17	2.8	2.2	1.3	2.6
B317.1227 Court Officers and Justices of the Peace	-	-	-	-	-
B318.1228 Immigration, Employment Insurance and Revenue Officers	31	1.3	1.3	1.1	1.3
B4 Clerical supervisors	111	3.0	2.2	0.8	2.7
B41.121 Clerical Supervisors	111	3.0	2.2	0.8	2.7
B411.1211 Supervisors, General Office & Administrative Support Clerks	23	2.7	2.2	1.1	2.5
B412.1212 Supervisors, Finance and Insurance Clerks	34	3.2	2.0	0.6	2.7
B413.1213 Supervisors, Library Correspondence and Related Information	14	2.5	1.7	0.4	2.1
B414.1214 Supervisors, Mail and Message Distribution Occupations	-	-	-	-	-

Northern Lights College Region

Projected Annual Growth Rates in Occupational Demand

	Estimated Employment	Average Annual % Change			Avg Annual % Chg Over 4 Years
	<u>2005</u>	<u>2007/2005</u>	<u>2009/2007</u>	<u>2010/2009</u>	<u>2009/2005</u>
B415.1215 Supervisors, Recording, Distributing and Scheduling Occupations	28	2.9	2.5	1.1	2.8
B5 Clerical occupations	2,658	3.1	2.5	0.6	2.9
B51.141 Clerical Occupations, General Office Skills	906	3.2	2.8	0.4	3.1
B511.1411 General Office Clerks	611	3.2	2.7	-0.2	3.1
B513.1413 Records Management and Filing Clerks	37	3.0	2.7	2.3	2.9
B514.1414 Receptionists and Switchboard Operators	253	3.3	3.0	1.8	3.2
B52.142 Office Equipment Operators	93	2.8	2.2	0.7	2.6
B522.1422 Data Entry Clerks	83	2.9	2.3	0.6	2.7
B523.1423 Desktop Publishing Operators and Related Occupations	-	-	-	-	-
B524.1424 Telephone Operators	-	-	-	-	-
B53.143 Finance and Insurance Clerks	656	3.2	2.1	0.3	2.7
B531.1431 Accounting and Related Clerks	307	3.2	2.6	-0.2	3.0
B532.1432 Payroll Clerks	64	2.9	2.6	0.5	2.9
B533.1433 Customer Service Representatives - Financial Services	201	3.3	1.5	0.8	2.4
B534.1434 Banking, Insurance and Other Financial Clerks	64	3.3	1.6	0.7	2.5
B535.1435 Collectors	23	3.1	1.8	1.2	2.5
B54.144 Administrative Support Clerks	170	3.0	2.5	0.6	2.9
B541.1441 Administrative Clerks	142	3.1	2.6	0.6	2.9
B542.1442 Personnel Clerks	16	2.7	2.4	2.1	2.6
B543.1443 Court Clerks	-	-	-	-	-
B55.145 Library, Correspondence and Related Information Clerks	287	2.7	1.9	1.1	2.4
B551.1451 Library Clerks	11	2.3	1.8	0.5	2.1
B552.1452 Correspondence, Publication and Related Clerks	-	-	-	-	-
B553.1453 Customer Service, Information and Related Clerks	219	2.9	2.0	1.3	2.5
B554.1454 Survey Interviewers and Statistical Clerks	51	1.9	1.6	0.4	1.8
B56.146 Mail and Message Distribution Occupations	151	3.5	2.9	0.6	3.3
B561.1461 Mail, Postal and Related Clerks	58	3.5	3.0	0.4	3.4
B562.1462 Letter Carriers	53	3.8	3.5	0.2	3.8
B563.1463 Couriers, Messengers and Door-to-Door Distributors	41	3.0	2.0	1.5	2.6

Northern Lights College Region

Projected Annual Growth Rates in Occupational Demand

	Estimated Employment	Average Annual % Change			Avg Annual % Chg Over 4 Years
	<u>2005</u>	<u>2007/2005</u>	<u>2009/2007</u>	<u>2010/2009</u>	<u>2009/2005</u>
B57.147 Recording, Scheduling and Distributing Occupations	390	3.1	2.5	0.9	2.9
B571.1471 Shippers and Receivers	157	2.9	2.3	1.5	2.6
B572.1472 Storekeepers and Parts Clerks	52	3.0	2.2	2.0	2.7
B573.1473 Production Clerks	12	3.2	2.4	1.7	2.9
B574.1474 Purchasing and Inventory Clerks	55	3.1	2.4	1.6	2.8
B575.1475 Dispatchers and Radio Operators	110	3.5	3.1	-0.8	3.4
B576.1476 Transportation Route and Crew	-	-	-	-	-
C Natural and applied sciences and related occupations	2,537	3.6	2.6	-1.7	3.2
C0 Professional occupations in natural and applied sciences	1,433	3.8	2.5	-2.0	3.2
C01.211 Physical Science Professionals	198	4.6	3.2	-2.0	4.1
C011.2111 Physicists and Astronomers	-	-	-	-	-
C012.2112 Chemists	25	4.0	2.5	-0.9	3.3
C013.2113 Geologists, Geochemists and Geophysicists	158	4.9	3.4	-2.4	4.3
C014.2114 Meteorologists	-	-	-	-	-
C015.2115 Other Professional Occupations in Physical Sciences	-	-	-	-	-
C02.212 Life Science Professionals	123	2.6	1.4	-0.5	2.1
C021.2121 Biologists and Related Scientists	51	3.2	2.1	-0.7	2.8
C022.2122 Forestry Professionals	66	2.3	1.0	-0.6	1.6
C023.2123 Agricultural Representatives, Consultants and Specialists	-	-	-	-	-
C03.213 Civil, Mechanical, Electrical and Chemical Engineers	286	3.8	2.9	-2.5	3.5
C031.2131 Civil Engineers	129	3.6	3.1	-3.0	3.5
C032.2132 Mechanical Engineers	70	4.2	2.8	-2.4	3.6
C033.2133 Electrical and Electronics Engineers	73	3.8	2.6	-2.1	3.3
C034.2134 Chemical Engineers	13	4.7	2.0	-1.3	3.4
C04.214 Other Engineers	138	4.1	2.7	-2.1	3.5
C041.2141 Industrial and Manufacturing Engineers	11	2.9	2.8	0.2	2.9
C042.2142 Metallurgical and Materials Engineers	-	-	-	-	-
C043.2143 Mining Engineers	12	4.0	3.1	-3.5	3.6
C044.2144 Geological Engineers	24	4.8	3.1	-3.8	4.1
C045.2145 Petroleum Engineers	23	6.4	3.4	-4.1	5.1

Northern Lights College Region

Projected Annual Growth Rates in Occupational Demand

	Estimated Employment	Average Annual % Change			Avg Annual % Chg Over 4 Years
	<u>2005</u>	<u>2007/2005</u>	<u>2009/2007</u>	<u>2010/2009</u>	<u>2009/2005</u>
C046.2146 Aerospace Engineers	-	-	-	-	-
C047.2147 Computer Engineers (Except Software Engineers)	43	3.5	2.3	-1.5	2.9
C048.2148 Other Professional Engineers n.e.c.	19	3.3	2.3	-0.5	2.9
C05.215 Architects, Urban Planners and Land Surveyors	116	3.7	2.9	-2.9	3.4
C051.2151 Architects	59	3.9	2.6	-3.1	3.4
C052.2152 Landscape Architects	-	-	-	-	-
C053.2153 Urban and Land Use Planners	21	2.9	3.7	-2.8	3.4
C054.2154 Land Surveyors	26	3.8	2.8	-3.1	3.4
C06.216 Mathematicians, Statisticians and Actuaries	-	-	-	-	-
C061.2161 Mathematicians, Statisticians and Actuaries	-	-	-	-	-
C07.217 Computer and Information Systems Professionals	574	3.7	2.2	-1.8	3.0
C071.2171 Information Systems Analysts and Consultants	183	3.5	2.2	-1.6	2.9
C072.2172 Database Analysts and Data Administrators	25	3.2	2.2	-0.6	2.8
C073.2173 Software Engineers	73	3.7	2.2	-2.1	3.0
C074.2174 Computer Programmers and Interactive Media Developers	209	3.8	2.2	-2.0	3.1
C075.2175 Web Designers and Developers	80	3.8	2.2	-2.2	3.1
C1 Technical occupations related to natural and applied sciences	1,105	3.4	2.7	-1.3	3.2
C11.221 Technical Occupations in Physical Sciences	130	4.3	3.1	-1.1	3.9
C111.2211 Chemical Technologists and Technicians	22	3.2	2.1	-0.4	2.7
C112.2212 Geological and Mineral Technologists and Technicians	107	4.6	3.3	-1.3	4.1
C113.2213 Meteorological Technicians	-	-	-	-	-
C12.222 Technical Occupations in Life Sciences	152	2.1	1.1	0.1	1.6
C121.2221 Biological Technologists and Technicians	34	2.6	1.6	0.4	2.1
C122.2222 Agricultural and Fish Products Inspectors	-	-	-	-	-
C123.2223 Forestry Technologists and Technicians	82	2.0	0.7	-0.3	1.3
C124.2224 Conservation and Fishery Officers	12	1.5	1.3	1.2	1.4
C125.2225 Landscape and Horticultural Technicians and Specialists	17	2.3	2.0	0.0	2.2
C13.223 Technical Occupations in Civil, Mechanical and Industrial Engineering	118	3.5	4.8	-4.1	4.3
C131.2231 Civil Engineering Technologists and Technicians	28	3.4	3.2	-2.9	3.4

Northern Lights College Region

Projected Annual Growth Rates in Occupational Demand

	Estimated Employment	Average Annual % Change			Avg Annual % Chg Over 4 Years
	<u>2005</u>	<u>2007/2005</u>	<u>2009/2007</u>	<u>2010/2009</u>	<u>2009/2005</u>
C132.2232 Mechanical Engineering Technologists and Technicians	18	3.8	3.3	-2.3	3.7
C133.2233 Industrial Engineering and Manufacturing Technologists and Technicians	18	4.4	3.3	-3.5	4.0
C134.2234 Construction Estimators	61	3.6	6.3	-5.7	5.2
C14.224 Technical Occupations in Electronics & Electrical Engineering	186	3.2	2.8	-0.3	3.1
C141.2241 Electrical and Electronics Engineering Technologists and Technicians	56	3.1	2.4	-0.4	2.8
C142.2242 Electronic Service Technicians (Household and Business Equipment)	96	3.0	3.0	-0.2	3.1
C143.2243 Industrial Instrument Technicians and Mechanics	25	4.3	3.0	-1.5	3.7
C144.2244 Aircraft Instrument Electrical and Avionics Mechanics, Technicians and Inspectors	11	3.2	3.0	0.5	3.2
C15.225 Technical Occupations in Architecture, Drafting, Surveying and Mapping	160	3.7	2.6	-2.5	3.3
C151.2251 Architectural Technologists and Technicians	17	3.8	2.7	-2.9	3.4
C152.2252 Industrial Designers	12	3.5	2.8	-2.0	3.2
C153.2253 Drafting Technologists and Technicians	83	3.7	2.7	-2.4	3.3
C154.2254 Land Survey Technologists and Technicians	-	-	-	-	-
C155.2255 Mapping and Related Technologists and Technicians	33	3.3	2.1	-1.4	2.8
C16.226 Other Technical Inspectors and Regulatory Officers	94	3.7	3.2	-2.0	3.6
C161.2261 Nondestructive Testers and Inspectors	-	-	-	-	-
C162.2262 Engineering Inspectors and Regulatory Officers	11	3.1	2.5	0.3	2.8
C163.2263 Inspectors in Public and Environmental Health and Occupational Health and Safety	40	3.7	3.1	-1.3	3.5
C164.2264 Construction Inspectors	26	3.1	3.5	-2.8	3.4
C17.227 Transportation Officers and Controllers	84	3.7	3.1	-0.4	3.5
C171.2271 Air Pilots, Flight Engineers and Flying Instructors	41	3.6	3.2	0.3	3.5
C172.2272 Air Traffic Control and Related Occupations	11	3.6	3.2	0.2	3.5
C173.2273 Deck Officers, Water Transport	14	3.3	2.7	0.2	3.1
C174.2274 Engineer Officers, Water Transport	-	-	-	-	-

Northern Lights College Region

Projected Annual Growth Rates in Occupational Demand

	Estimated Employment	Average Annual % Change			Avg Annual % Chg Over 4 Years
	<u>2005</u>	<u>2007/2005</u>	<u>2009/2007</u>	<u>2010/2009</u>	<u>2009/2005</u>
C175.2275 Railway Traffic Controllers and Marine Traffic Regulators	-	-	-	-	-
C18.228 Technical Occupations in Computer and Information Systems	183	3.4	2.1	-0.7	2.9
C181.2281 Computer and Network Operators and Web Technicians	95	3.4	2.1	-0.5	2.8
C182.2282 User Support Technicians	74	3.6	2.2	-1.0	3.0
C183.2283 Systems Testing Technicians	14	3.4	2.1	-1.2	2.8
D Health occupations	1,279	3.8	3.9	4.5	4.0
D0 Professional occupations in health	299	3.7	3.7	4.4	3.8
D01.311 Physicians Dentists and Veterinarians	150	3.9	4.0	4.3	4.1
D011.3111 Specialist Physicians	31	3.9	4.2	5.2	4.2
D012.3112 General Practitioners and Family Physicians	66	3.9	4.3	5.4	4.3
D013.3113 Dentists	33	3.9	4.3	5.4	4.3
D014.3114 Veterinarians	20	4.0	2.2	-2.8	3.2
D02.312 Optometrists, Chiropractors and Other Health Diagnosing and Treating Professionals	19	3.8	4.1	5.3	4.1
D021.3121 Optometrists	-	-	-	-	-
D022.3122 Chiropractors	-	-	-	-	-
D023.3123 Other Professional Occupations in Health Diagnosing and Treating	-	-	-	-	-
D03.313 Pharmacists, Dietitians and Nutritionists	65	3.2	2.4	3.8	2.9
D031.3131 Pharmacists	52	3.1	2.0	3.6	2.6
D032.3132 Dietitians and Nutritionists	12	3.8	3.8	4.5	3.9
D04.314 Therapy and Assessment Professionals	65	3.8	4.1	5.0	4.1
D041.3141 Audiologists and Speech-Language Pathologists	11	3.4	3.4	4.1	3.6
D042.3142 Physiotherapists	28	3.9	4.3	5.4	4.3
D043.3143 Occupational Therapists	15	3.9	4.2	5.3	4.2
D044.3144 Other Professional Occupations in Therapy and Assessment	11	3.8	3.9	4.7	4.0
D1 Nurse supervisors and registered nurses	315	3.9	4.2	5.2	4.2
D11.315 Nurse Supervisors and Registered Nurses	315	3.9	4.2	5.2	4.2
D111.3151 Head Nurses and Supervisors	11	3.8	4.1	5.1	4.1
D112.3152 Registered Nurses	304	3.9	4.2	5.2	4.2

Northern Lights College Region

Projected Annual Growth Rates in Occupational Demand

	Estimated Employment	Average Annual % Change			Avg Annual % Chg Over 4 Years
	<u>2005</u>	<u>2007/2005</u>	<u>2009/2007</u>	<u>2010/2009</u>	<u>2009/2005</u>
D2 Technical and related occupations in health	349	3.8	3.7	3.4	3.9
D21.321 Medical Technologists and Technicians (Except Dental Health)	131	3.8	3.6	3.3	3.9
D211.3211 Medical Laboratory Technologists and Pathologists' Assistants	37	3.8	3.9	4.3	4.0
D212.3212 Medical Laboratory Technicians	28	3.8	4.0	4.6	4.0
D213.3213 Veterinary and Animal Health Technologists and Technicians	28	3.9	2.3	-2.4	3.2
D214.3214 Respiratory Therapists, Clinical Perfusionists and Cardio- Pulmonary Technologists	-	-	-	-	-
D215.3215 Medical Radiation Technologists	19	3.9	4.2	5.2	4.2
D216.3216 Medical Sonographers	-	-	-	-	-
D217.3217 Cardiology Technologists	-	-	-	-	-
D218.3218 Electroencephalographic and Other Diagnostic Technologists n.e.c.	-	-	-	-	-
D219.3219 Other Medical Technologists and Technicians (Except Dental Health)	-	-	-	-	-
D22.322 Technical Occupations in Dental Health Care	32	3.6	4.0	5.4	3.9
D221.3221 Denturists	-	-	-	-	-
D222.3222 Dental Hygienists and Dental Therapists	21	3.9	4.3	5.4	4.3
D223.3223 Dental Technologists, Technicians and Laboratory Bench Workers	-	-	-	-	-
D23.323 Other Technical Occupations in Health Care (Except Dental)	187	3.8	3.6	3.2	3.8
D231.3231 Opticians	19	3.1	2.0	3.7	2.6
D232.3232 Midwives and Practitioners of Natural Healing	13	3.6	3.7	4.8	3.8
D233.3233 Licensed Practical Nurses	64	3.9	4.2	5.3	4.2
D234.3234 Ambulance Attendants and Other Paramedical Occupations	63	4.0	3.6	0.1	3.9
D235.3235 Other Technical Occupations in Therapy and Assessment	28	3.5	3.5	4.6	3.6
D3 Assisting occupations in support of health services	311	3.8	3.9	5.1	4.0
D31.341 Assisting Occupations in Support of Health Services	319	3.8	3.9	4.8	4.0
D311.3411 Dental Assistants	51	3.9	4.3	5.3	4.2
D312.3413 Nurse Aides, Orderlies and Patient Service Associates	183	3.9	4.2	5.3	4.2

Northern Lights College Region

Projected Annual Growth Rates in Occupational Demand

	Estimated Employment	Average Annual % Change			Avg Annual % Chg Over 4 Years
	<u>2005</u>	<u>2007/2005</u>	<u>2009/2007</u>	<u>2010/2009</u>	<u>2009/2005</u>
D313.3414 Other Assisting Occupations in Support of Health Services	84	3.7	3.0	3.3	3.5
E Occupations in social science, education, government service & religion	2,315	2.9	2.3	1.5	2.7
E0 Judges, lawyers, psychologists, social workers, ministers of religion and policy and program officers	663	3.3	2.5	0.3	3.0
E01.411 Judges, Lawyers and Quebec Notaries	204	3.8	2.2	-2.5	3.1
E011.4111 Judges	-	-	-	-	-
E012.4112 Lawyers and Quebec Notaries	201	3.9	2.2	-2.6	3.1
E02.415 Psychologists, Social Workers, Counsellors, Clergy and Probation Officers	209	3.0	3.0	3.8	3.1
E021.4151 Psychologists	21	3.3	3.4	4.1	3.5
E022.4152 Social Workers	61	3.0	3.2	3.8	3.2
E023.4153 Family, Marriage and Other Related Counsellors	56	3.6	3.7	4.4	3.8
E024.4154 Ministers of Religion	60	2.8	2.4	3.6	2.6
E025.4155 Probation and Parole Officers and Related Occupations	-	-	-	-	-
E03 Policy and program officers, researchers and consultants	253	3.2	2.3	-0.2	2.8
E031.4161 Natural and Applied Science Policy Researchers, Consultants and Program Officers	36	3.4	2.2	-1.2	2.9
E032.4162 Economists and Economic Policy Researchers and Analysts	11	2.9	1.9	-0.8	2.5
E033.4163 Business Development Officers and Marketing Researchers and Consultants	75	3.7	2.2	-1.6	3.0
E034.4164 Social Policy Researchers, Consultants & Program Officers	40	2.9	2.2	0.4	2.6
E035.4166 Education Policy Researchers Consultants & Program Officers	23	2.6	1.9	0.7	2.3
E036.4167 Recreation, Sports and Fitness Program Supervisors and Consultants	21	2.9	2.7	2.5	2.8
E037.4168 Program Officers Unique to Government	-	-	-	-	-
E038.4169 Other Professional Occupations in Social Science	-	-	-	-	-
E039.4165 Health Policy Researchers, Consultants & Program Officers	25	3.4	2.8	1.4	3.2
E1 Teachers and professors	1,101	2.4	1.8	1.4	2.1
E11.412 University Professors and Assistants	147	2.5	1.8	1.3	2.2

Northern Lights College Region

Projected Annual Growth Rates in Occupational Demand

	Estimated Employment	Average Annual % Change			Avg Annual % Chg Over 4 Years
	<u>2005</u>	<u>2007/2005</u>	<u>2009/2007</u>	<u>2010/2009</u>	<u>2009/2005</u>
E111.4121 University Professors	74	2.4	1.7	1.4	2.1
E112.4122 Post-Secondary Teaching and Research Assistants	73	2.5	1.8	1.2	2.2
E12.413 College and Other Vocational Instructors	176	2.5	1.8	1.3	2.2
E121.4131 College and Other Vocational Instructors	176	2.5	1.8	1.3	2.2
E13.414 Secondary and Elementary School Teachers and Educational Counsellors	778	2.4	1.7	1.4	2.1
E131.4141 Secondary School Teachers	308	2.4	1.7	1.4	2.1
E132.4142 Elementary School and Kindergarten Teachers	429	2.4	1.7	1.4	2.1
E133.4143 Educational Counsellors	41	2.4	1.8	1.4	2.2
E2 Paralegals, social services workers and occupations in education and religion n.e.c.	551	3.4	3.1	3.0	3.4
E21.421 Paralegals, Social Services Workers and Occupations in Education and Religion n.e.c.	551	3.4	3.2	3.0	3.4
E211.4211 Paralegal and Related Occupations	81	3.8	2.2	-2.4	3.1
E212.4212 Community and Social Service Workers	148	3.3	3.4	4.1	3.4
E213.4213 Employment Counsellors	24	3.1	2.7	2.2	3.0
E214.4215 Instructors and Teachers of Persons with Disabilities	17	2.8	2.4	2.4	2.7
E215.4216 Other Instructors	74	2.5	1.9	1.4	2.2
E216.4217 Other Religious Occupations	12	2.8	2.4	3.4	2.6
E217.4214 Early Childhood Educators and Assistants	195	3.8	4.0	5.0	4.0
F Occupations in art, culture, recreation and sport	702	2.9	2.1	-0.1	2.5
F0 Professional Occupations in Art and Culture	281	2.8	2.0	0.0	2.4
F01 Librarians, archivists, conservators and curators	16	2.4	1.9	0.1	2.2
F011.5111 Librarians	11	2.3	1.8	0.4	2.0
F012.5112 Conservators and Curators	-	-	-	-	-
F013.5113 Archivists	-	-	-	-	-
F02.512 Writing, Translating and Public Relations Professionals	131	3.2	2.1	-0.7	2.7
F021.5121 Authors and Writers	34	3.1	2.1	-1.1	2.6
F022.5122 Editors	13	2.7	1.8	-0.3	2.3
F023.5123 Journalists	-	-	-	-	-

Northern Lights College Region

Projected Annual Growth Rates in Occupational Demand

	Estimated Employment	Average Annual % Change			Avg Annual % Chg Over 4 Years
	<u>2005</u>	<u>2007/2005</u>	<u>2009/2007</u>	<u>2010/2009</u>	<u>2009/2005</u>
F024.5124 Professional Occupations in Public Relations and Communications	55	3.3	2.3	-0.3	2.9
F025.5125 Translators, Terminologists and Interpreters	22	3.7	2.3	-1.9	3.1
F03.513 Creative and Performing Artists	132	2.4	1.8	0.8	2.1
F031.5131 Producers, Directors, Choreographers & Related Occupations	20	2.4	1.8	-0.1	2.2
F032.5132 Conductors, Composers and Arrangers	-	-	-	-	-
F033.5133 Musicians and Singers	59	2.4	1.8	1.3	2.1
F034.5134 Dancers	15	2.4	1.8	1.4	2.1
F035.5135 Actors and Comedians	11	2.3	1.8	0.2	2.1
F036.5136 Painters, Sculptors and Other Visual Artists	23	2.5	1.8	0.1	2.2
F1 Technical occupations in art, culture, recreation and sport	422	3.0	2.1	-0.2	2.6
F11.521 Technical Occupations in Libraries, Archives, Museums and Art Galleries	24	2.4	2.1	0.1	2.3
F111.5211 Library and Archive Technicians and Assistants	17	2.3	1.7	0.8	2.0
F112.5212 Technical Occupations Related to Museums and Art Galleries	-	-	-	-	-
F12.522 Photographers, Graphic Arts Technicians & Technical & coordinating Occupations in Motion Pictures, Broadcasting & Performing Arts	79	3.2	2.1	-1.3	2.7
F121.5221 Photographers	36	3.9	2.2	-2.5	3.1
F122.5222 Film and Video Camera Operators	-	-	-	-	-
F123.5223 Graphic Arts Technicians	-	-	-	-	-
F124.5224 Broadcast Technicians	-	-	-	-	-
F125.5225 Audio and Video Recording Technicians	-	-	-	-	-
F126.5226 Other Technical and Co-ordinating Occupations in Motion Pictures, Broadcasting and the Performing Arts	11	2.5	1.8	0.1	2.2
F127.5227 Support Occupations in Motion Pictures, Broadcasting and the Performing Arts	11	2.4	2.0	-0.1	2.2
F13.523 Announcers and Other Performers	14	2.5	2.2	1.4	2.4
F131.5231 Announcers and Other Broadcasters	-	-	-	-	-
F132.5232 Other Performers	-	-	-	-	-
F14.524 Creative Designers and Craftspersons	199	3.3	2.3	-0.9	2.9

Northern Lights College Region

Projected Annual Growth Rates in Occupational Demand

	Estimated Employment	Average Annual % Change			Avg Annual % Chg Over 4 Years
	<u>2005</u>	<u>2007/2005</u>	<u>2009/2007</u>	<u>2010/2009</u>	<u>2009/2005</u>
F141.5241 Graphic Designers and Illustrators	95	3.6	2.2	-1.9	3.0
F142.5242 Interior Designers	39	3.8	2.8	-2.6	3.4
F143.5243 Theatre, Fashion, Exhibit and Other Creative Designers	19	3.5	2.2	-1.1	2.9
F144.5244 Artisans and Craftspersons	44	2.3	1.9	2.6	2.1
F145.5245 Patternmakers - Textile, Leather and Fur Products	-	-	-	-	-
F15.525 Athletes, Coaches, Referees and Related Occupations	106	2.3	2.0	1.6	2.2
F151.5251 Athletes	-	-	-	-	-
F152.5252 Coaches	15	2.3	1.7	1.4	2.0
F153.5253 Sports Officials and Referees	-	-	-	-	-
F154.5254 Program Leaders and Instructors in Recreation and Sport	80	2.3	2.0	1.8	2.2
G Sales and service occupations	6,817	2.9	2.5	3.2	2.8
G0 Sales and service supervisors	200	3.0	2.6	3.5	2.9
G01.621 Sales and Service Supervisors	200	3.0	2.6	3.5	2.9
G011.6211 Retail Trade Supervisors	95	2.9	1.8	3.1	2.4
G012.6212 Food Service Supervisors	70	3.1	3.4	4.5	3.3
G013.6213 Executive Housekeepers	-	-	-	-	-
G014.6214 Dry Cleaning and Laundry Supervisors	-	-	-	-	-
G015.6215 Cleaning Supervisors	-	-	-	-	-
G016.6216 Other Service Supervisors	15	2.9	3.1	2.0	3.1
G1 Wholesale, technical, insurance, real estate sales specialists and retail,					
wholesale and grain buyers	549	2.9	2.2	0.5	2.6
G11.641 Sales Representatives, Wholesale Trade	290	2.7	2.3	0.6	2.6
G111.6411 Sales Representatives - Wholesale Trade (Non-Technical)	291	2.7	2.3	0.6	2.6
G12.622 Technical Sales Specialists, Wholesale Trade	92	2.9	2.6	-0.1	2.8
G121.6221 Technical Sales Specialists - Wholesale Trade	92	2.9	2.6	-0.1	2.8
G13.623 Insurance and Real Estate Sales Occupations and Buyers	168	3.2	1.9	0.7	2.6
G131.6231 Insurance Agents and Brokers	114	3.3	1.5	0.7	2.5
G132.6232 Real Estate Agents and Salespersons	-	-	-	-	-
G133.6233 Retail and Wholesale Buyers	42	2.8	2.0	2.2	2.5
G134.6234 Grain Elevator Operators	-	-	-	-	-

Northern Lights College Region

Projected Annual Growth Rates in Occupational Demand

	Estimated Employment	Average Annual % Change			Avg Annual % Chg Over 4 Years
	<u>2005</u>	<u>2007/2005</u>	<u>2009/2007</u>	<u>2010/2009</u>	<u>2009/2005</u>
G2 Retail salespersons and sales clerks	1,244	2.9	1.8	3.0	2.4
G21.642 Retail Salespersons and Sales Clerks	1,244	2.9	1.8	3.0	2.4
G211.6421 Retail Salespersons and Sales Clerks	1,244	2.9	1.8	3.0	2.4
G3 Cashiers	544	2.9	1.9	3.5	2.5
G31.661 Cashiers	544	2.9	1.9	3.5	2.5
G311.6611 Cashiers	544	2.9	1.9	3.5	2.5
G4 Chefs and cooks	524	3.1	3.4	4.2	3.4
G41.624 Chefs and Cooks	524	3.1	3.4	4.2	3.4
G411.6241 Chefs	95	3.0	3.4	4.5	3.3
G412.6242 Cooks	423	3.1	3.4	4.4	3.3
G5 Occupations in food and beverage service	657	3.0	3.4	4.5	3.3
G51.645 Occupations in Food and Beverage Service	657	3.0	3.4	4.5	3.3
G511.6451 Maîtres d'hôtel and Hosts/Hostesses	59	3.0	3.4	4.4	3.3
G512.6452 Bartenders	91	3.0	3.3	4.3	3.3
G513.6453 Food and Beverage Servers	507	3.0	3.4	4.6	3.3
G6 Occupations in protective services	279	1.7	1.6	1.4	1.7
G61.626 Police Officers and Fire-fighters	127	1.4	1.4	1.1	1.4
G611.6261 Police Officers (Except Commissioned)	84	1.4	1.4	1.1	1.4
G612.6262 Fire-fighters	46	1.6	1.5	0.9	1.6
G62.646 Other Occupations in Protective Service	109	1.7	1.6	1.2	1.7
G621.6461 Sheriffs and Bailiffs	-	-	-	-	-
G622.6462 Correctional Service Officers	33	1.4	1.5	1.1	1.5
G623.6463 By-law Enforcement and Other Regulatory Officers n.e.c.	12	2.1	1.8	1.6	2.0
G624.6464 Other Ranks Armed Forces	39	1.3	1.3	1.1	1.3
G625.6465 Other Protective Service Occupations	16	2.8	2.1	1.9	2.5
G63.665 Security Guards and Related Occupations	43	2.6	2.4	2.7	2.6
G631.6651 Security Guards and Related Occupations	44	2.6	2.4	2.7	2.6
G7 Occupations in travel and accommodation including attendants in recreation and sport	234	3.3	3.2	1.8	3.3
G71.643 Occupations in Travel and Accommodation	170	3.5	3.4	1.9	3.6

Northern Lights College Region

Projected Annual Growth Rates in Occupational Demand

	Estimated Employment	Average Annual % Change			Avg Annual % Chg Over 4 Years
	<u>2005</u>	<u>2007/2005</u>	<u>2009/2007</u>	<u>2010/2009</u>	<u>2009/2005</u>
G711.6431 Travel Counsellors	-	-	-	-	-
G712.6432 Purser and Flight Attendants	48	3.8	3.5	0.3	3.8
G713.6433 Airline Sales and Service Agents	41	3.8	3.5	0.2	3.8
G714.6434 Ticket Agents, Cargo Service Representatives and Related Clerks (Except Airline)	-	-	-	-	-
G715.6435 Hotel Front Desk Clerks	64	3.0	3.5	4.7	3.3
G72.644 Tour and Recreational Guides and Casino Occupations	30	2.7	2.4	1.0	2.6
G721.6441 Tour and Travel Guides	-	-	-	-	-
G722.6442 Outdoor Sport and Recreational Guides	-	-	-	-	-
G723.6443 Casino Occupations	12	2.2	1.8	0.1	2.1
G73.667 Other Occupations in Travel, Accommodation, Amusement and Recreation	33	2.7	2.7	2.0	2.8
G731.6671 Operators and Attendants in Amusement, Recreation and Sport	17	2.2	1.9	1.0	2.1
G732.6672 Other Attendants in Accommodation and Travel	17	3.3	3.4	3.0	3.5
G8 Childcare and home support workers	519	3.0	2.8	3.5	3.0
G81.647 Childcare and Home Support Workers	519	3.0	2.8	3.5	3.0
G811.6471 Visiting Homemakers, Housekeepers & Related Occupations	164	3.6	3.9	4.9	3.9
G812.6472 Elementary and Secondary School Teacher Assistants	177	2.4	1.8	1.4	2.1
G814.6474 Babysitters, Nannies and Parents' Helpers	178	3.1	2.9	4.1	3.1
G9 Sales and service occupations n.e.c.	2,061	3.0	2.7	3.5	2.9
G91.627 Technical Occupations in Personal Service	163	2.7	2.3	3.6	2.6
G911.6271 Hairstylists and Barbers	156	2.7	2.3	3.6	2.6
G912.6272 Funeral Directors and Embalmers	-	-	-	-	-
G92.648 Other Occupations in Personal Service	92	2.7	2.1	3.2	2.5
G921.6481 Image, Social and Other Personal Consultants	-	-	-	-	-
G922.6482 Estheticians, Electrologists and Related Occupations	51	2.8	2.2	3.5	2.5
G923.6483 Pet Groomers and Animal Care Workers	30	2.6	2.0	2.9	2.3
G924.6484 Other Personal Service Occupations	-	-	-	-	-
G93.666 Cleaners	501	2.9	3.0	2.7	3.1

Northern Lights College Region

Projected Annual Growth Rates in Occupational Demand

	Estimated Employment	Average Annual % Change			Avg Annual % Chg Over 4 Years
	<u>2005</u>	<u>2007/2005</u>	<u>2009/2007</u>	<u>2010/2009</u>	<u>2009/2005</u>
G931.6661 Light Duty Cleaners	204	3.1	3.5	4.1	3.4
G932.6662 Specialized Cleaners	58	3.0	2.8	1.6	3.0
G933.6663 Janitors, Caretakers and Building Superintendents	244	2.9	2.7	1.5	2.9
G94.625 Butchers and Bakers	127	3.1	2.0	3.2	2.6
G941.6251 Butchers and Meat Cutters - Retail and Wholesale	54	2.9	1.7	3.2	2.4
G942.6252 Bakers	73	3.1	2.1	3.2	2.7
G96.664 Food Counter Attendants, Kitchen Helpers and Related Occupations	633	3.1	3.4	4.5	3.4
G961.6641 Food Counter Attendants, Kitchen Helpers and Related Occupations	633	3.1	3.4	4.5	3.4
G97.662 Other Sales and Related Occupations	470	3.0	1.7	3.1	2.4
G971.6621 Service Station Attendants	73	2.9	1.7	3.3	2.4
G972.6622 Grocery Clerks and Store Shelf Stockers	290	2.9	1.7	3.4	2.4
G973.6623 Other Elemental Sales Occupations	105	3.0	1.9	2.2	2.5
G98.668 Other Elemental Service Occupations	80	2.9	2.6	3.5	2.8
G981.6681 Dry Cleaning and Laundry Occupations	38	3.0	2.9	4.0	3.1
G982.6682 Ironing, Pressing and Finishing Occupations	-	-	-	-	-
G983.6683 Other Elemental Service Occupations	33	2.8	2.4	3.0	2.6
H Trades, transport and equipment operators and related occupations	7,675	3.3	4.3	-2.0	4.0
H0 Contractors and supervisors in trades and transportation	418	3.6	5.4	-4.1	4.7
H01.721 Contractors and Supervisors, Trades and Related Workers	390	3.6	5.6	-4.4	4.8
H011.7211 Supervisors, Machinists and Related Occupations	-	-	-	-	-
H012.7212 Contractors and Supervisors, Electrical Trades and Telecommunications Occupations	43	3.3	5.4	-3.6	4.5
H013.7213 Contractors and Supervisors, Pipefitting Trades	34	4.5	5.2	-5.4	5.1
H014.7214 Contractors and Supervisors, Metal Forming, Shaping and Erecting Trades	18	3.5	5.1	-3.5	4.5
H015.7215 Contractors and Supervisors, Carpentry Trades	62	3.6	6.5	-5.6	5.3
H016.7216 Contractors and Supervisors, Mechanic Trades	37	2.9	3.1	0.9	3.1

Northern Lights College Region

Projected Annual Growth Rates in Occupational Demand

	Estimated Employment	Average Annual % Change			Avg Annual % Chg Over 4 Years
	<u>2005</u>	<u>2007/2005</u>	<u>2009/2007</u>	<u>2010/2009</u>	<u>2009/2005</u>
H017.7217 Contractors and Supervisors, Heavy Construction Equipment Crews	98	3.6	5.8	-4.7	4.9
H018.7218 Supervisors, Printing and Related Occupations	-	-	-	-	-
H019.7219 Contractors and Supervisors, Other Construction Trades, Installers, Repairers and Servicers	85	3.6	6.7	-5.8	5.3
H02.722 Supervisors, Railway and Motor Transportation Occupations	26	3.5	3.1	0.3	3.4
H021.7221 Supervisors, Railway Transport Operations	-	-	-	-	-
H022.7222 Supervisors, Motor Transport & Other Ground Transit Operators	20	3.2	2.9	0.4	3.1
H1 Construction trades	1,740	3.5	6.4	-5.5	5.2
H11.725 Plumbers, Pipefitters and Gas Fitters	282	3.7	5.9	-5.0	5.0
H111.7251 Plumbers	161	3.5	6.5	-5.6	5.3
H112.7252 Steamfitters, Pipefitters and Sprinkler System Installers	92	4.1	4.9	-4.2	4.7
H113.7253 Gas Fitters	35	3.4	4.8	-3.7	4.2
H12.727 Carpenters and Cabinetmakers	714	3.5	6.3	-5.3	5.1
H121.7271 Carpenters	671	3.5	6.5	-5.5	5.2
H122.7272 Cabinetmakers	37	2.4	4.4	-1.0	3.5
H13.728 Masonry and Plastering Trades	277	3.6	6.9	-6.2	5.5
H131.7281 Bricklayers	45	3.6	6.8	-6.0	5.4
H132.7282 Concrete Finishers	43	3.6	6.8	-6.0	5.4
H133.7283 Tilesetters	38	3.6	6.9	-6.2	5.5
H134.7284 Plasterers, Drywall Installers and Finishers and Lathers	150	3.6	6.9	-6.2	5.5
H14.729 Other Construction Trades	468	3.6	6.6	-5.8	5.3
H141.7291 Roofers and Shinglers	93	3.6	6.9	-6.1	5.5
H142.7292 Glaziers	38	3.4	5.7	-4.1	4.7
H143.7293 Insulators	39	4.2	5.9	-5.7	5.3
H144.7294 Painters and Decorators	223	3.6	6.7	-5.8	5.4
H145.7295 Floor Covering Installers	79	3.6	6.6	-5.8	5.3
H2 Stationary engineers, power station operators and electrical trades and telecommunications occupations	578	3.5	4.6	-3.2	4.2

Northern Lights College Region

Projected Annual Growth Rates in Occupational Demand

	Estimated Employment	Average Annual % Change			Avg Annual % Chg Over 4 Years
	<u>2005</u>	<u>2007/2005</u>	<u>2009/2007</u>	<u>2010/2009</u>	<u>2009/2005</u>
H21.724 Electrical Trades and Telecommunications Occupations	520	3.4	4.8	-3.4	4.3
H211.7241 Electricians (Except Industrial and Power System)	253	3.5	6.3	-5.1	5.1
H212.7242 Industrial Electricians	146	3.7	3.6	-1.4	3.8
H213.7243 Power System Electricians	18	3.0	2.6	-1.5	2.9
H214.7244 Electrical Power Line and Cable Workers	43	3.0	2.8	-1.5	2.9
H215.7245 Telecommunications Line and Cable Workers	22	3.3	4.2	-3.2	3.9
H216.7246 Telecommunications Installation and Repair Workers	27	2.7	2.8	-0.9	2.8
H217.7247 Cable Television Service and Maintenance Technicians	-	-	-	-	-
H22.735 Stationary Engineers and Power Station and System Operators	58	3.8	2.7	-1.5	3.3
H221.7351 Stationary Engineers and Auxiliary Equipment Operators	40	3.9	2.8	-1.5	3.4
H222.7352 Power Systems and Power Station Operators	13	2.9	2.1	-0.5	2.5
H3 Machinists, metal forming, shaping and erecting occupations	379	3.3	4.1	-1.4	3.9
H31.723 Machinists and Related Occupations	39	2.1	2.4	3.3	2.3
H311.7231 Machinists and Machining and Tooling Inspectors	35	2.2	2.3	3.3	2.3
H312.7232 Tool and Die Makers	-	-	-	-	-
H32.726 Metal Forming, Shaping and Erecting Trades	341	3.4	4.3	-1.9	4.0
H321.7261 Sheet Metal Workers	48	3.4	6.2	-4.9	5.0
H322.7262 Boilermakers	-	-	-	-	-
H323.7263 Structural Metal and Platework Fabricators and Fitters	19	2.2	3.0	2.4	2.7
H324.7264 Ironworkers	34	3.4	6.3	-4.9	5.1
H325.7266 Blacksmiths and Die Setters	-	-	-	-	-
H326.7265 Welders and Related Machine Operators	227	3.5	3.8	-1.1	3.8
H4 Mechanics	929	3.0	2.9	1.2	3.0
H41.731 Machinery and Transportation Equipment Mechanics (Except Motor Vehicle)	545	3.1	3.2	0.3	3.3
H411.7311 Construction Millwrights and Industrial Mechanics (Except Textile)	204	2.9	2.8	0.7	2.9
H412.7312 Heavy-Duty Equipment Mechanics	229	3.1	2.9	1.2	3.1
H413.7313 Refrigeration and Air Conditioning Mechanics	37	3.4	5.8	-4.2	4.8
H414.7314 Railway Carmen/women	-	-	-	-	-

Northern Lights College Region

Projected Annual Growth Rates in Occupational Demand

	Estimated Employment	Average Annual % Change			Avg Annual % Chg Over 4 Years
	<u>2005</u>	<u>2007/2005</u>	<u>2009/2007</u>	<u>2010/2009</u>	<u>2009/2005</u>
H415.7315 Aircraft Mechanics and Aircraft Inspectors	40	3.6	3.2	0.5	3.5
H416.7316 Machine Fitters	-	-	-	-	-
H417.7317 Textile Machinery Mechanics and Repairers	0	-	-	-	-
H418.7318 Elevator Constructors and Mechanics	19	3.6	6.9	-6.1	5.5
H42.732 Automotive service technicians	334	2.9	2.3	2.6	2.7
H421.7321 Automotive Service Technicians, Truck Mechanics and Mechanical Repairers	254	2.8	2.3	2.7	2.6
H422.7322 Motor Vehicle Body Repairers	72	2.8	2.3	3.4	2.6
H43.733 Other Mechanics	57	3.4	3.0	0.6	3.3
H431.7331 Oil and Solid Fuel Heating Mechanics	11	6.1	4.4	-5.8	5.5
H432.7332 Electric Appliance Servicers and Repairers	22	2.9	2.7	2.0	2.9
H433.7333 Electrical Mechanics	-	-	-	-	-
H434.7334 Motorcycle and Other Related Mechanics	-	-	-	-	-
H435.7335 Other Small Engine and Equipment Mechanics	-	-	-	-	-
H5 Other trades n.e.c.	281	2.9	3.5	-0.4	3.3
H51.734 Upholsterers, Tailors, Shoe Repairers, Jewellers and Related Occupations	48	2.7	2.2	3.3	2.5
H511.7341 Upholsterers	-	-	-	-	-
H512.7342 Tailors, Dressmakers, Furriers and Milliners	29	2.6	2.3	3.3	2.5
H513.7343 Shoe Repairers and Shoemakers	-	-	-	-	-
H514.7344 Jewellers, Watch Repairers and Related Occupations	-	-	-	-	-
H52.738 Printing Press Operators, Commercial Divers and Other Trades and Related Occupations n.e.c.	44	1.5	1.8	3.1	1.7
H521.7381 Printing Press Operators	13	1.8	2.1	3.4	2.0
H522.7382 Commercial Divers	-	-	-	-	-
H523.7383 Other Trades and Related Occupations	30	1.4	1.7	3.1	1.6
H53.744 Other installers, repairers and servicers	189	3.3	4.1	-2.1	3.9
H531.7441 Residential and Commercial Installers and Servicers	86	3.4	6.3	-5.2	5.1
H532.7442 Waterworks and Gas Maintenance Workers	36	3.9	2.7	-2.7	3.4
H533.7443 Automotive Mechanical Installers and Servicers	29	2.8	2.1	2.7	2.5

Northern Lights College Region

Projected Annual Growth Rates in Occupational Demand

	Estimated Employment	Average Annual % Change			Avg Annual % Chg Over 4 Years
	<u>2005</u>	<u>2007/2005</u>	<u>2009/2007</u>	<u>2010/2009</u>	<u>2009/2005</u>
H534.7444 Pest Controllers and Fumigators	-	-	-	-	-
H535.7445 Other Repairers and Servicers	34	2.8	2.3	2.3	2.6
H6 Heavy equipment and crane operators including drillers	571	3.5	4.5	-2.0	4.2
H61.742 Heavy Equipment Operators	484	3.6	4.5	-2.0	4.2
H611.7421 Heavy Equipment Operators (Except Crane)	462	3.6	4.5	-2.0	4.2
H612.7422 Public Works Maintenance Equipment Operators	22	2.9	3.6	-1.7	3.3
H62.737 Crane Operators, Drillers and Blasters	89	3.6	4.5	-2.3	4.2
H621.7371 Crane Operators	35	3.1	4.8	-2.9	4.1
H622.7372 Drillers and Blasters - Surface Mining Quarrying and Construction	50	3.9	4.0	-1.3	4.2
H623.7373 Water Well Drillers	-	-	-	-	-
H7 Transportation equipment operators and related workers, excluding labourers	1,873	3.2	2.9	0.5	3.2
H71.741 Motor Vehicle and Transit Drivers	1,783	3.2	2.9	0.5	3.1
H711.7411 Truck Drivers	1,431	3.1	2.9	0.4	3.1
H712.7412 Bus Drivers and Subway and Other Transit Operators	114	3.5	3.1	0.5	3.4
H713.7413 Taxi and Limousine Drivers and Chauffeurs	58	3.8	3.4	0.2	3.7
H714.7414 Delivery and Courier Service Drivers	181	2.9	2.7	1.6	2.9
H72.736 Train Crew Operating Occupations	31	4.1	3.3	0.0	3.8
H721.7361 Railway and Yard Locomotive Engineers	16	4.1	3.4	-0.3	3.9
H722.7362 Railway Conductors and Brakemen/women	15	4.1	3.3	0.4	3.8
H73.743 Other Transport Equipment Operators and Related Workers	61	3.5	3.1	0.2	3.4
H731.7431 Railway Yard Workers	-	-	-	-	-
H732.7432 Railway Track Maintenance Workers	11	4.0	3.4	-0.3	3.8
H733.7433 Deck Crew Water Transport	-	-	-	-	-
H734.7434 Engine Room Crew, Water Transport	-	-	-	-	-
H735.7435 Lock and Cable Ferry Operators and Related Occupations	-	-	-	-	-
H736.7436 Boat Operators	-	-	-	-	-
H737.7437 Air Transport Ramp Attendants	24	4.1	3.4	0.3	3.9

Northern Lights College Region

Projected Annual Growth Rates in Occupational Demand

	Estimated Employment	Average Annual % Change			Avg Annual % Chg Over 4 Years
	<u>2005</u>	<u>2007/2005</u>	<u>2009/2007</u>	<u>2010/2009</u>	<u>2009/2005</u>
H8 Trades helpers, construction and transportation labourers and related occupations	907	3.1	4.3	-2.1	3.9
H81.745 Longshore Workers and Material Handlers	412	2.7	2.4	1.3	2.7
H811.7451 Longshore Workers	39	3.8	3.1	0.2	3.5
H812.7452 Material Handlers	366	2.6	2.3	1.6	2.5
H82.761 Trades Helpers and Labourers	440	3.6	6.2	-5.2	5.1
H821.7611 Construction Trades Helpers and Labourers	415	3.6	6.4	-5.4	5.2
H822.7612 Other Trades Helpers and Labourers	27	3.2	3.4	-1.1	3.4
H83.762 Public Works and Other Labourers n.e.c.	60	2.9	3.1	-1.0	3.1
H831.7621 Public Works and Maintenance Labourers	40	2.7	3.1	-1.5	3.0
H832.7622 Railway and Motor Transport Labourers	20	3.3	3.2	0.0	3.4
I Occupations unique to primary industry	2,419	2.5	1.6	1.2	2.1
I0 Occupations unique to agriculture, excluding labourers	1,103	0.9	0.5	4.1	0.7
I01.825 Contractors, Operators and Supervisors in Agriculture, Horticulture and Aquaculture	604	1.0	0.5	4.1	0.7
I011.8251 Farmers and Farm Managers	485	0.9	0.4	4.3	0.6
I012.8252 Agricultural and Related Service Contractors and Managers	-	-	-	-	-
I013.8253 Farm Supervisors and Specialized Livestock Workers	33	1.0	0.6	4.0	0.8
I014.8254 Nursery and Greenhouse Operators and Managers	34	1.1	0.5	3.9	0.8
I015.8255 Landscaping & Grounds Maintenance Contractors & Managers	-	-	-	-	-
I016.8256 Supervisors, Landscape and Horticulture	14	1.6	1.3	2.1	1.5
I017.8257 Aquaculture Operators and Managers	19	1.0	0.5	4.0	0.7
I02.843 Agriculture and Horticulture Workers	501	0.9	0.4	4.2	0.7
I021.8431 General Farm Workers	348	0.9	0.4	4.3	0.7
I022.8432 Nursery and Greenhouse Workers	153	1.0	0.5	4.0	0.8
I1 Occupations unique to forestry operations, mining, oil and gas extraction and fishing excluding labourers	801	3.9	2.6	-1.3	3.4
I11.821 Supervisors, Logging and Forestry	39	1.6	0.2	0.2	0.9
I111.8211 Supervisors, Logging and Forestry	38	1.7	0.2	0.1	0.9
I12.822 Supervisors, Mining, Oil and Gas	209	4.7	3.5	-1.6	4.3

Northern Lights College Region

Projected Annual Growth Rates in Occupational Demand

	Estimated Employment	Average Annual % Change			Avg Annual % Chg Over 4 Years
	<u>2005</u>	<u>2007/2005</u>	<u>2009/2007</u>	<u>2010/2009</u>	<u>2009/2005</u>
I121.8221 Supervisors, Mining and Quarrying	69	3.1	3.0	4.4	3.2
I122.8222 Supervisors, Oil and Gas Drilling and Service	139	5.5	3.7	-4.4	4.8
I13.823 Underground Miners, Oil and Gas Drillers and Related Workers	188	4.4	3.3	-0.2	4.0
I131.8231 Underground Production and Development Miners	100	3.5	3.1	3.1	3.4
I132.8232 Oil and Gas Well Drillers, Servicers, Testers and Related Workers	89	5.4	3.6	-3.7	4.7
I14.841 Mine Service Workers and Operators in Oil and Gas Drilling	176	5.3	3.6	-3.4	4.6
I141.8411 Underground Mine Service and Support Workers	30	3.3	3.1	3.2	3.3
I142.8412 Oil and Gas Well Drilling Workers and Services Operators	146	5.7	3.7	-4.7	4.9
I15.824 Logging Machinery Operators	71	1.9	0.5	-0.1	1.2
I151.8241 Logging Machinery Operators	71	1.9	0.5	-0.1	1.2
I16.842 Logging and Forestry Workers	121	2.1	0.3	-1.0	1.3
I161.8421 Chain-saw and Skidder Operators	73	1.8	0.0	-0.5	0.9
I162.8422 Silviculture and Forestry Workers	39	1.8	0.1	-0.5	0.9
I17.826 Fishing Vessel Masters and Skippers and Fishermen/women	-	-	-	-	-
I171.8261 Fishing Masters and Officers	-	-	-	-	-
I172.8262 Fishing Vessel Skippers and Fishermen/women	-	-	-	-	-
I18.844 Other Fishing and Trapping Occupations	-	-	-	-	-
I181.8441 Fishing Vessel Deckhands	-	-	-	-	-
I182.8442 Trappers and Hunters	0	-	-	-	-
I2 Primary production labourers	511	3.3	2.2	-0.7	2.9
I21.861 Primary Production Labourers	514	3.4	2.3	-0.8	2.9
I211.8611 Harvesting Labourers	54	0.9	0.4	4.3	0.6
I212.8612 Landscaping and Grounds Maintenance Labourers	70	2.4	2.5	0.9	2.5
I213.8613 Aquaculture and Marine Harvest Labourers	23	1.0	0.5	4.1	0.8
I214.8614 Mine Labourers	53	3.5	3.1	3.0	3.4
I215.8615 Oil and Gas Drilling, Servicing and Related Labourers	208	5.5	3.7	-4.1	4.8
I216.8616 Logging and Forestry Labourers	103	1.6	-0.1	0.0	0.8
J Occupations unique to processing, manufacturing and utilities	1,464	2.6	2.1	1.1	2.4
J0 Supervisors in manufacturing	155	3.3	2.4	-0.4	3.0

Northern Lights College Region

Projected Annual Growth Rates in Occupational Demand

	Estimated Employment	Average Annual % Change			Avg Annual % Chg Over 4 Years
	<u>2005</u>	<u>2007/2005</u>	<u>2009/2007</u>	<u>2010/2009</u>	<u>2009/2005</u>
J01.921 Supervisors, Processing Occupations	134	3.6	2.5	-0.8	3.1
J011.9211 Supervisors, Mineral and Metal Processing	-	-	-	-	-
J012.9212 Supervisors, Petroleum, Gas and Chemical Processing and Utilities	66	5.9	3.4	-4.5	4.8
J013.9213 Supervisors, Food, Beverage and Tobacco Processing	-	-	-	-	-
J014.9214 Supervisors, Plastic and Rubber Products Manufacturing	-	-	-	-	-
J015.9215 Supervisors, Forest Products Processing	50	0.8	1.0	4.1	0.9
J016.9216 Supervisors, Textile Processing	-	-	-	-	-
J02.922 Supervisors, Assembly and Fabrication	21	1.5	2.2	2.9	1.9
J021.9221 Supervisors, Motor Vehicle Assembling	-	-	-	-	-
J022.9222 Supervisors, Electronics Manufacturing	-	-	-	-	-
J023.9223 Supervisors, Electrical Products Manufacturing	-	-	-	-	-
J024.9224 Supervisors, Furniture and Fixtures Manufacturing	-	-	-	-	-
J025.9225 Supervisors, Fabric, Fur and Leather Products Manufacturing	-	-	-	-	-
J026.9226 Supervisors, Other Mechanical and Metal Products Manufacturing	-	-	-	-	-
J027.9227 Supervisors, Other Products Manufacturing and Assembly	-	-	-	-	-
J1 Machine operators in manufacturing	724	3.1	2.3	0.2	2.8
J11.923 Central Control and Process Operators in Manufacturing and Processing	237	5.9	3.6	-5.0	4.9
J111.9231 Central Control & Process Operators Mineral & Metal Processing	17	4.1	3.2	-1.3	3.8
J112.9232 Petroleum, Gas and Chemical Process Operators	208	6.2	3.7	-5.6	5.2
J113.9233 Pulping Control Operators	-	-	-	-	-
J114.9234 Papermaking and Coating Control Operators	-	-	-	-	-
J12.941 Machine Operators and Related Workers in Metal and Mineral Products Processing	59	2.9	3.2	1.7	3.2
J121.9411 Machine Operators, Mineral and Metal Processing	32	3.1	3.0	2.5	3.1
J122.9412 Foundry Workers	11	4.4	3.1	-4.1	3.9

Northern Lights College Region

Projected Annual Growth Rates in Occupational Demand

	Estimated Employment	Average Annual % Change			Avg Annual % Chg Over 4 Years
	<u>2005</u>	<u>2007/2005</u>	<u>2009/2007</u>	<u>2010/2009</u>	<u>2009/2005</u>
J123.9413 Glass Forming and Finishing Machine Operators and Glass Cutters	-	-	-	-	-
J124.9414 Concrete, Clay and Stone Forming Operators	17	3.0	4.3	0.3	3.8
J125.9415 Inspectors and Testers, Mineral and Metal Processing	-	-	-	-	-
J13.942 Machine Operators and Related Workers in Chemical, Plastic and Rubber Processing	40	3.5	2.5	-1.2	3.1
J131.9421 Chemical Plant Machine Operators	13	5.1	3.4	-3.8	4.4
J132.9422 Plastics Processing Machine Operators	-	-	-	-	-
J133.9423 Rubber Processing Machine Operators and Related Workers	-	-	-	-	-
J134.9424 Water and Waste Plant Operators	23	2.8	2.0	-0.1	2.4
J14.943 Machine Operators and Related Workers in Pulp and Paper Production and Wood Processing	239	0.8	1.0	4.1	0.9
J141.9431 Sawmill Machine Operators	99	0.5	0.9	4.9	0.7
J142.9432 Pulp Mill Machine Operators	18	2.9	1.9	-0.2	2.5
J143.9433 Papermaking and Finishing Machine Operators	-	-	-	-	-
J144.9434 Other Wood Processing Machine Operators	45	0.6	1.1	4.2	0.9
J145.9435 Paper Converting Machine Operators	-	-	-	-	-
J146.9436 Lumber Graders and Other Wood Processing Inspectors and Graders	63	0.5	0.8	4.8	0.7
J15.944 Machine Operators and Related Workers in Textile Processing	-	-	-	-	-
J151.9441 Textile Fibre and Yarn Preparation Machine Operators	-	-	-	-	-
J152.9442 Weavers, Knitters and Other Fabric-Making Occupations	-	-	-	-	-
J153.9443 Textile Dyeing and Finishing Machine Operators	-	-	-	-	-
J154.9444 Textile Inspectors, Graders and Samplers	-	-	-	-	-
J16.945 Machine Operators and Related Workers in Fabric, Fur and Leather Products Manufacturing	30	1.9	2.1	4.2	2.0
J161.9451 Sewing Machine Operators	26	1.9	2.2	4.1	2.1
J162.9452 Fabric, Fur and Leather Cutters	-	-	-	-	-
J163.9453 Hide and Pelt Processing Workers	0	-	-	-	-

Northern Lights College Region

Projected Annual Growth Rates in Occupational Demand

	Estimated Employment	Average Annual % Change			Avg Annual % Chg Over 4 Years
	<u>2005</u>	<u>2007/2005</u>	<u>2009/2007</u>	<u>2010/2009</u>	<u>2009/2005</u>
J164.9454 Inspectors and Testers, Fabric, Fur and Leather Products Manufacturing	-	-	-	-	-
J17.946 Machine Operators and Related Workers in Food, Beverage and Tobacco Processing	27	3.4	1.7	1.2	2.6
J171.9461 Process Control and Machine Operators, Food and Beverage Processing	13	3.6	1.7	1.3	2.7
J172.9462 Industrial Butchers and Meat Cutters, Poultry Preparers and Related Workers	-	-	-	-	-
J173.9463 Fish Plant Workers	-	-	-	-	-
J174.9464 Tobacco Processing Machine Operators	0	-	-	-	-
J175.9465 Testers and Graders, Food and Beverage Processing	-	-	-	-	-
J18.947 Printing Machine Operators and Related Occupations	44	2.7	2.1	2.8	2.4
J181.9471 Printing Machine Operators	-	-	-	-	-
J182.9472 Camera, Platemaking and Other Pre-Press Occupations	-	-	-	-	-
J183.9473 Binding and Finishing Machine Operators	-	-	-	-	-
J184.9474 Photographic and Film Processors	27	2.9	2.1	2.8	2.6
J19.951 Machining, Metalworking, Woodworking and Related Machine Operators	42	1.2	1.8	3.5	1.5
J191.9511 Machining Tool Operators	-	-	-	-	-
J192.9512 Forging Machine Operators	-	-	-	-	-
J193.9513 Woodworking Machine Operators	27	0.8	1.5	4.2	1.2
J194.9514 Metalworking Machine Operators	-	-	-	-	-
J196.9516 Other Metal Products Machine Operators.	-	-	-	-	-
J197.9517 Other Products Machine Operators	-	-	-	-	-
J2 Assemblers in manufacturing	171	2.2	2.6	1.9	2.5
J21.948 Mechanical, Electrical and Electronics Assemblers	50	2.9	2.8	1.1	2.9
J211.9481 Aircraft Assemblers and Aircraft Assembly Inspectors	-	-	-	-	-
J212.9482 Motor Vehicle Assemblers, Inspectors and Testers	14	4.4	3.0	-2.0	3.8
J213.9483 Electronics Assemblers, Fabricators, Inspectors and Testers	-	-	-	-	-

Northern Lights College Region

Projected Annual Growth Rates in Occupational Demand

	Estimated Employment	Average Annual % Change			Avg Annual % Chg Over 4 Years
	<u>2005</u>	<u>2007/2005</u>	<u>2009/2007</u>	<u>2010/2009</u>	<u>2009/2005</u>
J214.9484 Assemblers and Inspectors, Electrical Appliance, Apparatus and Equipment Manufacturing	-	-	-	-	-
J215.9485 Assemblers, Fabricators and Inspectors, Industrial Electrical Motors and Transformers	-	-	-	-	-
J216.9486 Mechanical Assemblers and Inspectors	-	-	-	-	-
J217.9487 Machine Operators and Inspectors, Electrical Apparatus Manufacturing	-	-	-	-	-
J22.949 Other Assembly and Related Occupations	121	1.9	2.6	2.2	2.3
J221.9491 Boat Assemblers and Inspectors	-	-	-	-	-
J222.9492 Furniture and Fixture Assemblers and Inspectors	29	2.2	2.6	2.3	2.4
J223.9493 Other Wood Products Assemblers and Inspectors	43	1.1	1.7	3.2	1.4
J224.9494 Furniture Finishers and Refinishers	-	-	-	-	-
J225.9495 Plastic Products Assemblers, Finishers and Inspectors	-	-	-	-	-
J226.9496 Painters and Coaters - Industrial	22	2.7	4.2	-1.1	3.6
J227.9497 Plating, Metal Spraying and Related Operators	-	-	-	-	-
J228.9498 Other Assemblers and Inspectors	-	-	-	-	-
J3 Labourers in processing, manufacturing and utilities	412	1.5	1.5	3.1	1.5
J31.961 Labourers in Processing, Manufacturing and Utilities	412	1.5	1.5	3.1	1.5
J311.9611 Labourers in Mineral and Metal Processing	16	2.3	2.6	1.9	2.5
J312.9612 Labourers in Metal Fabrication	11	2.2	3.3	1.1	2.8
J313.9613 Labourers in Chemical Products Processing and Utilities	20	6.0	3.2	-4.2	4.8
J314.9614 Labourers in Wood Pulp and Paper Processing	269	0.6	1.0	4.4	0.8
J315.9615 Labourers in Rubber and Plastic Products Manufacturing	-	-	-	-	-
J316.9616 Labourers in Textile Processing	-	-	-	-	-
J317.9617 Labourers in Food Beverage and Tobacco Processing	48	3.1	1.8	1.3	2.5
J318.9618 Labourers in Fish Processing	-	-	-	-	-
J319.9619 Other Labourers in Processing, Manufacturing and Utilities	39	2.2	2.3	2.2	2.3

- suppressed due to small numbers