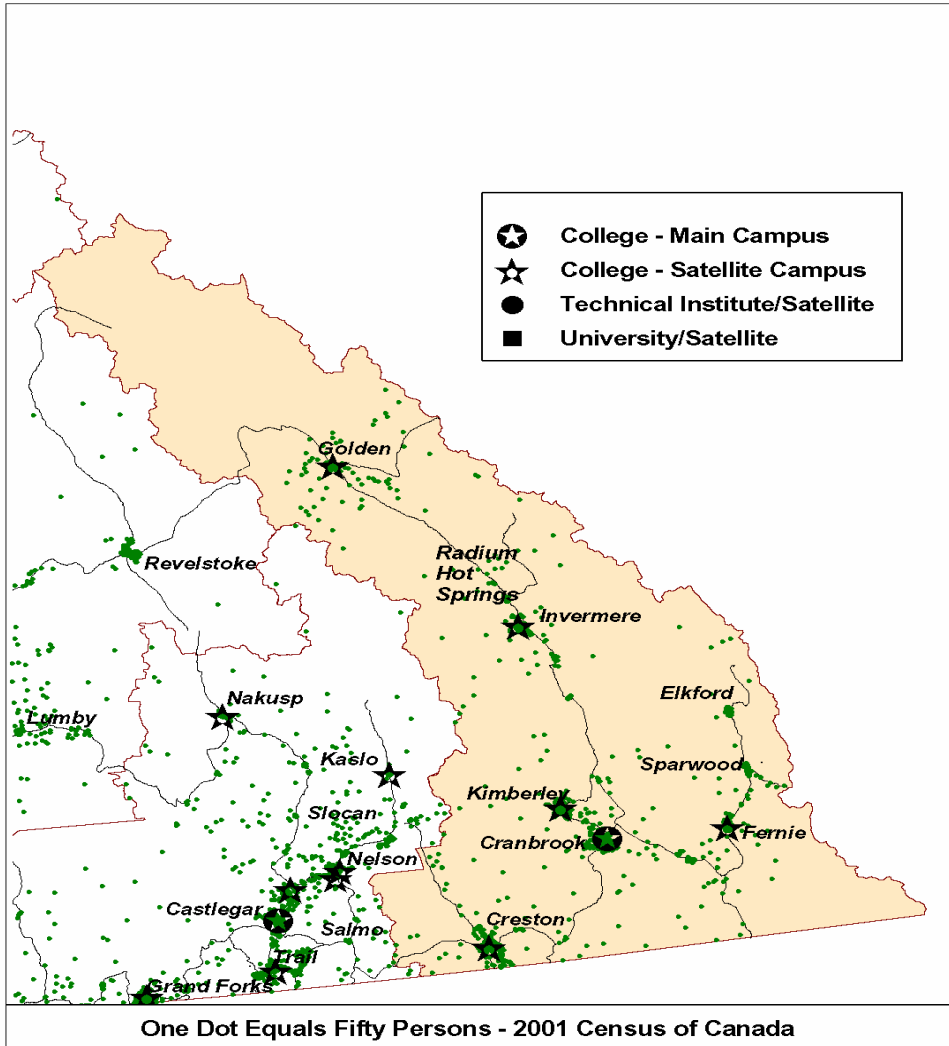


INDUSTRY AND OCCUPATION PROJECTIONS: 2006 -- 2010

ROCKIES COLLEGE REGION



Background Information on Geographic Location of Population

Major Cities	Population <u>2005</u>	% of <u>Region</u>	Land <u>Area</u> <i>Sq Km</i>	Population <u>Density</u> <i>Persons per Sq Km</i>
Cranbrook	19,774	23.9	17.8	1110.9
Kimberley	7,049	8.5	58.3	120.9
Fernie	5,126	6.2	16.1	319.4
Creston	5,097	6.2	8.5	601.1
Golden	4,399	5.3	11.0	399.2
Sparwood	3,973	4.8	177.7	22.4
Invermere	3,256	3.9	8.4	386.2
Elkford	2,670	3.2	101.6	26.3
Radium Hot Springs	813	1.0	5.5	148.4
Canal Flats	680	0.8	n.a.	n.a.
Rest of Region	29,901	36.1	44519.3 *	0.7
Total Region	82,738	100.0	44,924.2	1.8
Region as % of BC	1.9		4.8	
Youth Age 15-29	11,967			
Youth in Region as % of BC	2.0			

* includes Canal Flats

Note to Users

All assumptions relating to employment are based on past conditions, modified wherever possible to take into consideration future changes. Consequently, the resulting employment projections are not necessarily what will be, but rather what could be, given the realization of these conditions. It is certainly possible that unforeseen changes in factors such as economic development, government policy, land use and zoning will affect future employment. Consequently, the projections should only be regarded as one possible scenario on the future size and distribution of the workforce.

Regional Employment Projection Model (REPM)

BC STATS is grateful for the support and financial assistance from the Ministry of Advanced Education in developing the model.

Contents

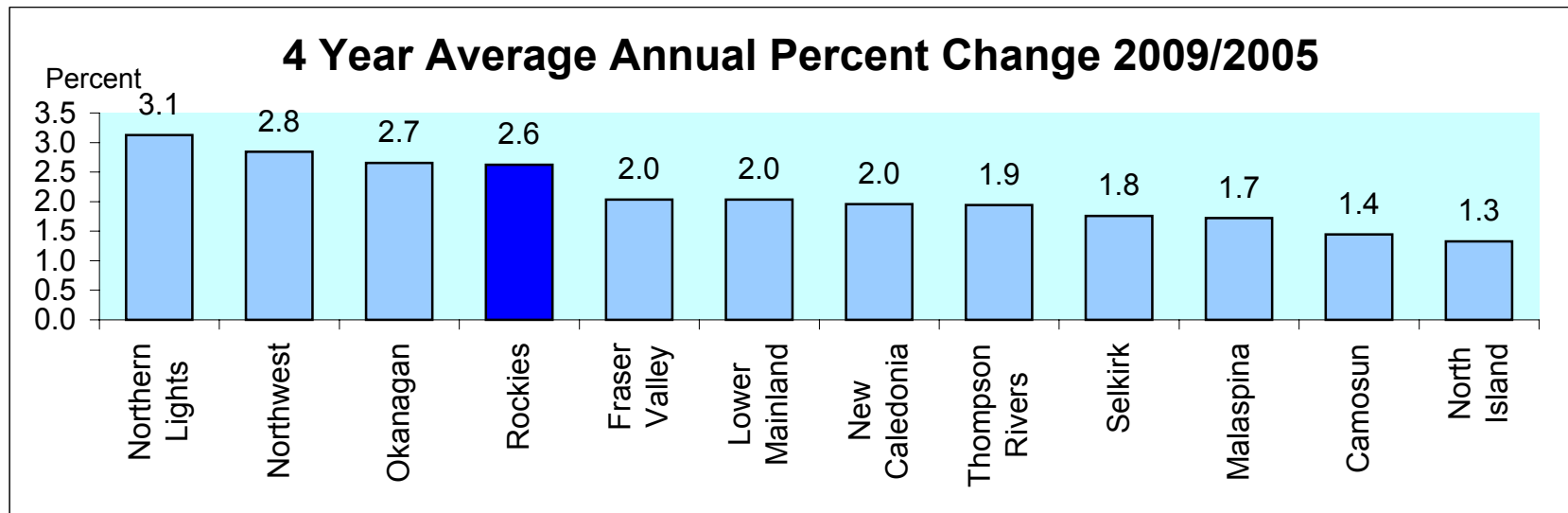
1. Projected Annual Growth in Employment Demand by College Region
2. Industrial Structure in the College Region Compared with BC, 2005 and 2009
3. Projected Annual Growth in Employment Demand by Industry
4. Occupational Structure in the College Region Compared with BC, 2005 and 2009
5. Projected Annual Growth Rates in Occupational Demand (1-digit)
6. Projected Annual Growth Rates in Occupational Demand (2-digits)

Appendices

1. Methodology
2. COPS Industry Conversion to REPM
3. Regional District to College Region Conversion for REPM
4. Projected Annual Growth Rates in Occupational Demand (3-digit)
5. Projected Annual Growth Rates in Occupational Demand (4-digit)

Projected Annual Growth in Employment Demand by College Region

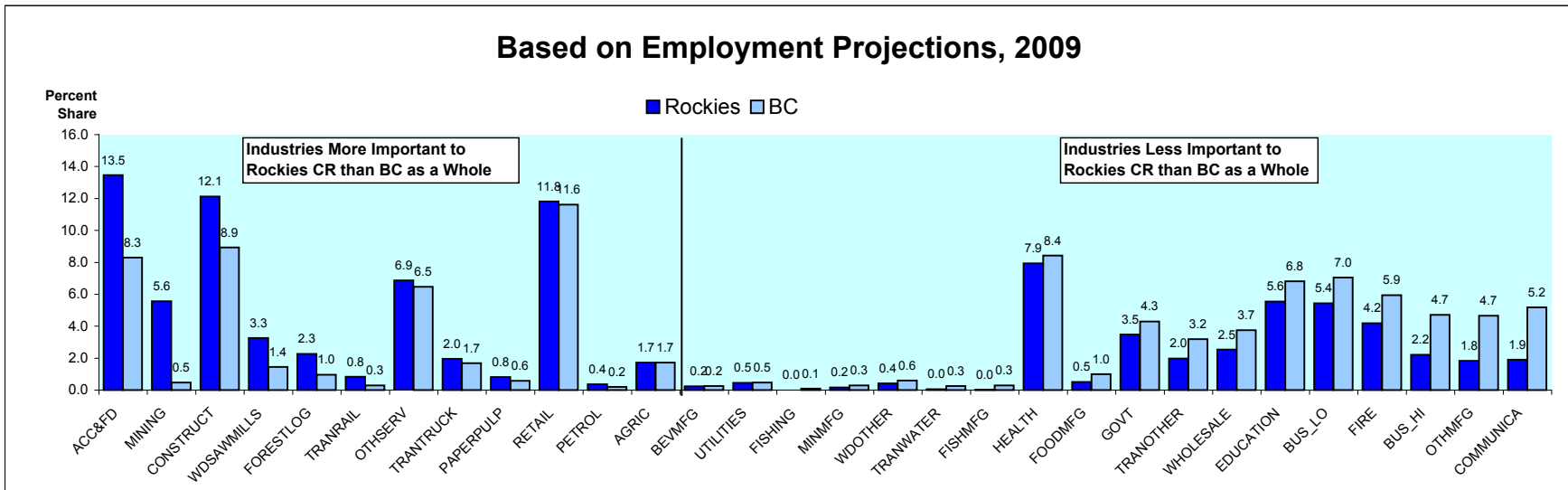
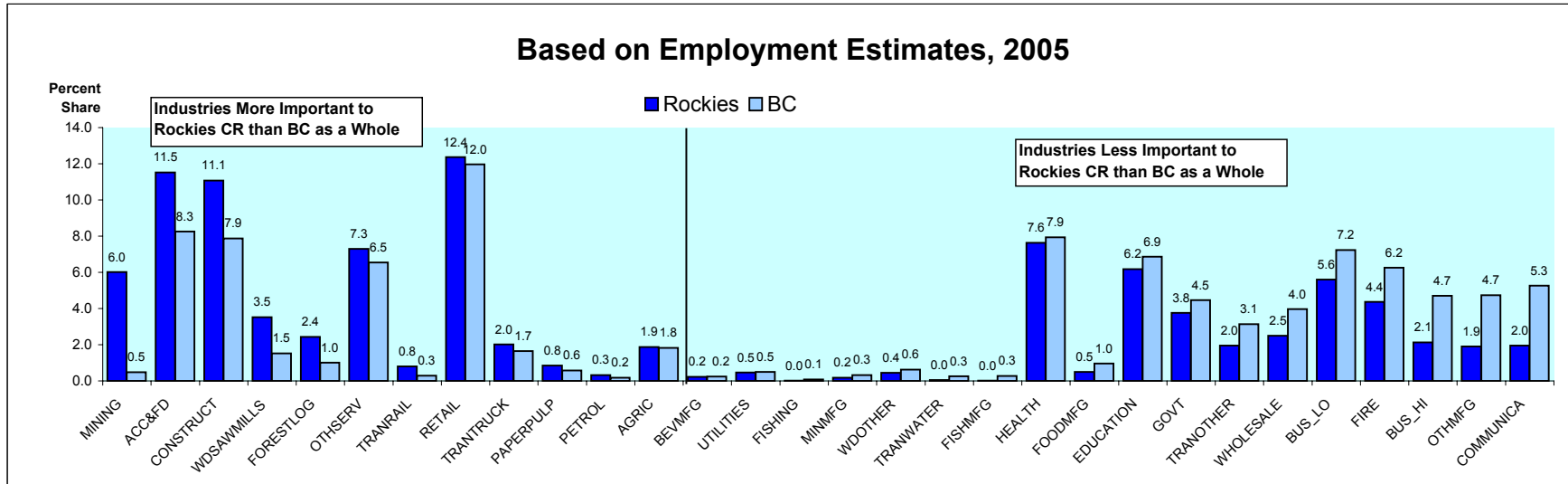
	Estimated Employment	Projected Employment Levels		Average Annual % Chg			Avg Annual % Chg Over 4 Years
	<u>2005</u>	<u>2009</u>	<u>2010</u>	<u>2007/2005</u>	<u>2009/2007</u>	<u>2010/2009</u>	<u>2009/2005</u>
	Northern Lights	34,708	39,046	39,220	3.1	2.9	0.4
Northwest	34,597	38,531	39,845	2.3	3.2	3.4	2.8
OKanagan	175,281	193,888	201,600	2.3	2.9	4.0	2.7
Rockies	37,929	41,910	43,335	2.3	2.8	3.4	2.6
Fraser Valley	120,271	130,067	133,725	1.8	2.2	2.8	2.0
Lower Mainland	1,182,258	1,278,495	1,327,306	2.1	1.9	3.8	2.0
New Caledonia	75,311	81,207	83,482	1.8	2.0	2.8	2.0
Thompson Rivers	85,651	92,310	94,914	1.8	2.0	2.8	1.9
Selkirk	36,829	39,421	40,304	1.5	2.0	2.2	1.8
Malaspina	109,580	117,129	120,067	1.4	2.0	2.5	1.7
Camosun	167,460	177,149	181,894	1.3	1.6	2.7	1.4
North Island	70,227	73,956	75,509	1.2	1.4	2.1	1.3
Total	2,130,101	2,303,108	2,381,200	2.0	2.0	3.4	2.0



Industrial Structure in the Rockies College Region Compared with BC

Percent Share of Employment by Industry

Ranked by the Percentage Point Difference in the Industry Share in the College Region Compared with BC



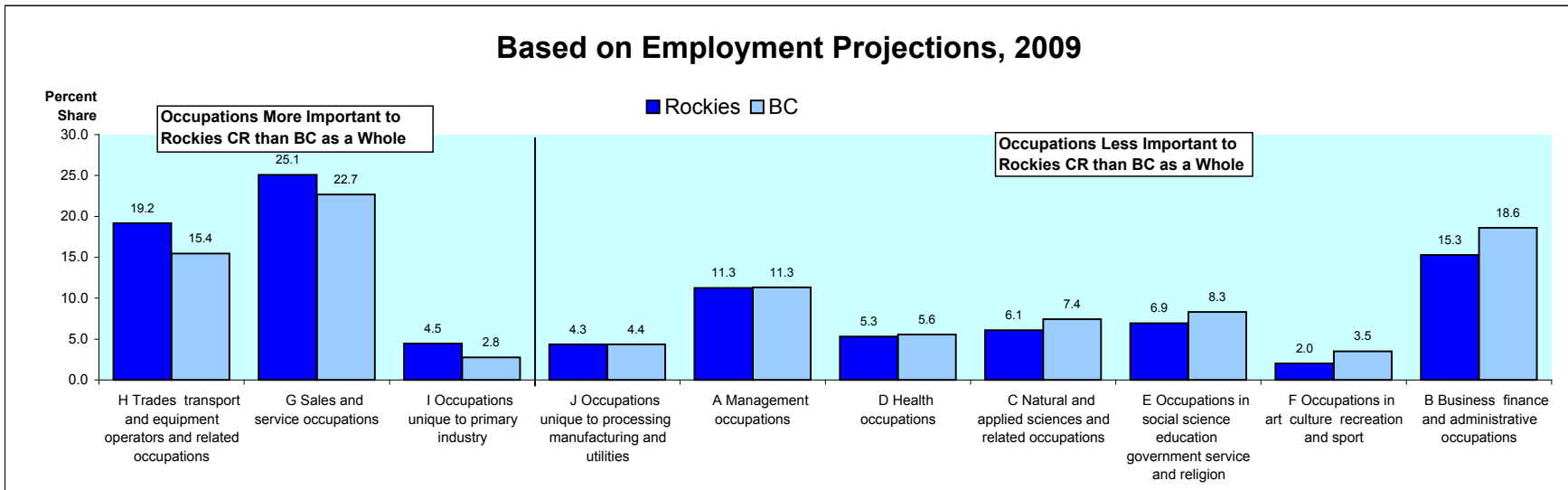
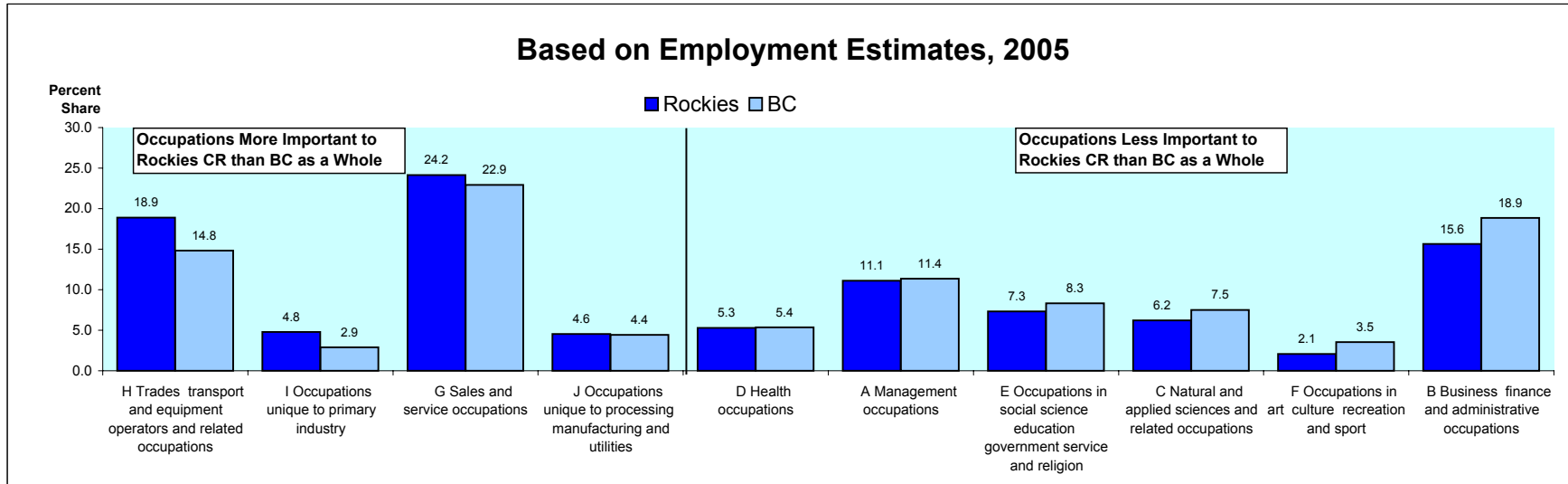
Rockies College Region

	Estimated	Projected		Average Annual % Chg			Avg Annual % Chg
	Employment	Employment Levels					Over 4 Years
	<u>2005</u>	<u>2009</u>	<u>2010</u>	<u>2007/2005</u>	<u>2009/2007</u>	<u>2010/2009</u>	<u>2009/2005</u>
ACC&FD	4,371	5,642	6,292	6.2	7.4	11.5	7.3
AGRIC	707	725	757	0.9	0.4	4.4	0.6
BEVMFG	87	98	99	4.0	1.7	1.0	2.9
BUS_HI	810	925	945	2.6	4.2	2.2	3.5
BUS_LO	2,122	2,275	2,341	1.9	1.7	2.9	1.8
COMMUNICA	741	800	814	1.8	2.1	1.8	2.0
CONSTRUCT	4,201	5,081	4,755	2.6	7.4	-6.4	5.2
EDUCATION	2,343	2,327	2,318	0.0	-0.4	-0.4	-0.2
FIRE	1,655	1,755	1,847	1.9	1.0	5.3	1.5
FISHING	-	-	-	-	-	-	-
FISHMFG	-	-	-	-	-	-	-
FOODMFG	188	210	213	3.7	2.1	1.2	3.0
FORESTLOG	923	949	941	1.8	-0.4	-0.9	0.7
GOVT	1,424	1,458	1,467	0.6	0.6	0.6	0.6
HEALTH	2,897	3,329	3,469	3.7	3.5	4.2	3.7
MINING	2,282	2,334	2,380	0.7	0.5	1.9	0.6
MINMFG	66	67	67	0.5	0.1	0.2	0.3
OTHMFG	723	769	822	1.1	2.0	6.9	1.6
OTHSERV	2,770	2,875	3,025	0.9	1.0	5.2	0.9
PAPERPULP	319	342	344	2.2	1.2	0.5	1.8
PETROL	123	149	140	6.1	3.9	-6.3	5.2
PETROLMFG	-	-	-	-	-	-	-
RETAIL	4,693	4,948	5,242	1.8	0.9	5.9	1.4
TRANOTHER	740	829	850	2.9	3.0	2.4	3.0
TRANRAIL	306	350	359	3.8	3.1	2.5	3.5
TRANTRUCK	763	817	835	1.3	2.2	2.1	1.8
TRANWATER	18	21	21	4.7	3.1	2.5	4.0
UTILITIES	178	190	195	1.8	1.5	2.7	1.7
WDOTHER	169	173	182	0.4	0.8	5.2	0.6
WDSAWMILLS	1,333	1,365	1,437	0.4	0.8	5.2	0.6
WHOLESALE	947	1,060	1,135	2.2	3.6	7.1	3.0
ALL INDUSTRIES	37,929	41,910	43,335	2.3	2.8	3.4	2.6

Occupational Structure in the Rockies College Region Compared with BC

Percent Share of Employment by Occupation

Ranked by the Percentage Point Difference in the Occupation Share in the College Region Compared with BC



Rockies College Region

Projected Annual Growth Rates in Occupational Demand

	Estimated Employment	Average Annual % Change			Avg Annual % Chg Over 4 Years
	<u>2005</u>	<u>2007/2005</u>	<u>2009/2007</u>	<u>2010/2009</u>	<u>2009/2005</u>
All occupations	37,929	2.3	2.8	3.4	2.6
A Management occupations	4,217	2.6	3.2	4.1	3.0
B Business finance and administrative occupations	5,927	1.9	2.1	3.1	2.0
C Natural and applied sciences and related occupations	2,360	1.8	2.1	1.8	2.0
D Health occupations	1,998	2.9	2.8	4.4	2.9
E Occupations in social science education government service and religion	2,780	1.2	1.0	1.8	1.1
F Occupations in art culture recreation and sport	787	1.6	1.8	2.4	1.7
G Sales and service occupations	9,161	3.4	3.7	7.5	3.7
H Trades transport and equipment operators and related occupations	7,162	2.0	4.0	-0.9	3.1
I Occupations unique to primary industry	1,810	1.2	0.5	2.1	0.9
J Occupations unique to processing manufacturing and utilities	1,726	1.3	1.4	3.8	1.4

Projected Annual Growth Rates in Occupational Demand (2-digits)

Rockies College Region

Projected Annual Growth Rates in Occupational Demand

	Estimated Employment	Average Annual % Change			Avg Annual % Chg Over 4 Years
	<u>2005</u>	<u>2007/2005</u>	<u>2009/2007</u>	<u>2010/2009</u>	<u>2009/2005</u>
All occupations	37,929	2.3	2.8	3.4	2.6
A2 Managers in retail trade food and accommodation services	478	1.8	2.4	2.4	2.2
A3 Other managers n.e.c.	753	2.0	2.4	3.6	2.3
B0 Professional occupations in business and finance	1,614	3.6	3.9	8.2	3.9
B1 Finance and insurance administration occupations	1,371	1.9	3.3	-0.2	2.6
B2 Secretaries	963	1.9	1.9	3.5	2.0
B3 Administrative and regulatory occupations	599	2.0	2.4	2.8	2.3
B4 Clerical supervisors	786	1.8	2.3	1.9	2.1
B5 Clerical occupations	635	1.8	2.4	2.3	2.1
C0 Professional occupations in natural and applied sciences	119	1.8	1.7	3.6	1.8
C1 Technical occupations related to natural and applied sciences	2,826	1.9	2.0	3.4	2.0
D0 Professional occupations in health	1,288	1.9	2.1	2.1	2.0
D1 Nurse supervisors and registered nurses	1,072	1.8	2.1	1.5	2.0
D2 Technical and related occupations in health	462	2.8	2.7	4.5	2.8
D3 Assisting occupations in support of health services	525	3.0	2.9	4.4	3.1
E0 Judges, lawyers, psychologists, social workers, ministers of religion & policy/program officers	506	2.7	2.7	4.2	2.8
E1 Teachers and professors	505	2.9	2.8	4.5	2.9
E2 Paralegals, social services workers & occup. in educ. & religion n.e.c.	755	1.9	2.0	3.2	2.0
F0 Professional occupations in art and culture	1,256	0.1	-0.3	-0.2	-0.1
F1 Technical occupations in art, culture, recreation and sport	769	2.2	2.2	3.5	2.2
G0 Sales and service supervisors	318	1.3	1.4	1.8	1.4
G1 Wholesale, technical, insurance, real estate sales specialists & retail, wholesale and grain buyers	470	1.8	2.0	2.8	1.9
G2 Retail salespersons and sales clerks	278	3.9	4.2	8.3	4.2
G3 Cashiers	542	2.1	2.4	5.1	2.3
G4 Chefs and cooks	1,501	1.9	1.2	5.7	1.6
G5 Occupations in food and beverage service	697	2.5	2.1	6.8	2.3

Rockies College Region

Projected Annual Growth Rates in Occupational Demand

	Estimated Employment	Average Annual % Change			Avg Annual % Chg Over 4 Years
	<u>2005</u>	<u>2007/2005</u>	<u>2009/2007</u>	<u>2010/2009</u>	<u>2009/2005</u>
G6 Occupations in protective services	826	5.8	6.8	10.8	6.7
G7 Occup. in travel & accommodation incl. attendants in recreation & sport	1,062	6.1	7.2	11.3	7.1
G8 Childcare and home support workers	329	1.0	1.1	1.7	1.1
G9 Sales and service occupations n.e.c.	286	4.3	5.0	7.1	4.9
H0 Contractors and supervisors in trades and transportation	727	1.7	1.6	3.4	1.7
H1 Construction trades	2,912	3.6	4.0	7.8	3.9
H2 Stationary engineers, power stn operators & electrical trades & telecom.	408	2.4	5.4	-3.1	4.0
H3 Machinists, metal forming, shaping and erecting occupations	1,647	2.5	6.7	-5.4	4.8
H4 Mechanics	521	2.0	4.4	-2.2	3.3
H5 Other trades n.e.c.	409	1.6	3.2	0.3	2.5
H6 Heavy equipment and crane operators including drillers	1,105	1.4	1.7	2.9	1.6
H7 Transport equipment operators & related workers, excl. labourers	305	1.7	2.9	2.0	2.4
H8 Trades helpers, construction and transport labourers & related	592	1.6	3.3	-1.5	2.5
I0 Occupations unique to agriculture, excluding labourers	1,326	2.0	2.5	2.4	2.3
I1 Occup. unique to forestry ops, mining, oil & gas extraction, fishing excl. labourers	848	2.1	4.2	-0.9	3.2
I2 Primary production labourers	631	1.0	0.5	4.1	0.8
J0 Supervisors in manufacturing	742	1.3	0.4	0.7	0.8
J1 Machine operators in manufacturing	436	1.4	0.8	1.4	1.1
J2 Assemblers in manufacturing	150	1.6	1.4	3.3	1.6
J3 Labourers in processing, manufacturing and utilities	781	1.4	1.3	3.6	1.3

Appendix 1

Summary of Methodology for the British Columbia Regional Employment Projection Model (REPM)

The methodology used in the model has come largely from previous work on community dependencies carried out earlier by BC STATS. The fundamental premise is that the economy of a region can be represented by income flows that can be classified as “basic” (or driver) and “non-basic” (or support) depending on the source of the income.

The model calculates indirect employment effects from employment changes in the basic sectors using multipliers based in inter-industry linkages from the British Columbia Input-Output Model. Similarly, non-basic, or induced effects are calculated using an income-to-non-basic-jobs ratio.

The current version of the model is benchmarked to the 2001 Census employment by Regional District, and is projected forward up to the most up-to-date annual employment data from the Labour Force Survey. The growth rates from the Labour Force Survey (LFS) at the provincial level for the basic industries are used to project growth down to the Regional District level. The model then calculates the indirect jobs based on the Regional District specific multipliers. The direct and indirect employment levels are then used to calculate the wages and salaries earned in the basic industries which in turn are converted to employment in the non-basic industries through the income to support-industry job multipliers. As well, transfer payments and investment income are also converted to employment in the non-basic industries using the same multipliers. The output from the model is then benchmarked to the LFS industry numbers at the BC level as well as to the LFS regional employment numbers for the Development Regions and the Capital and Greater Vancouver Regional Districts. In the current version of the model, the employment numbers are reconciled up to the 2005 annual averages from the LFS.

Once the model is brought up to the most current employment levels, then the forecast is carried out for five to ten years further. The industrial employment projections from the Canadian Occupational Projection System (COPS) are now used as the source data for the industrial growth, both in determining the growth rates in the direct employment and then as a benchmark on which to reconcile the industrial employment generated by the model.

While the total employment is forced to the COPS employment levels, there is leeway to adjust growth rates by industry across the sub-provincial regions. There are some standard variables that are used to differentiate the outlook for

the regions. For example, the growth in the education sector is dictated by the projected K-12 and post-secondary population growth in the relevant age groups. Government Services is projected in line with the total population projections for the Regional Districts. Employment in the Health Sector is so often governed by the growth in the senior's population as are the transfer payments flowing in. (CPP and OAS is a large component of transfer payments). As well, pensions from private pension plans are considered investment income meaning seniors receive a high proportion of the total investment income in a region.

An important determining factor of growth by region is the major projects coming on stream in the outlook timeframe. Firstly they impact construction employment and secondly many will impact specific industries once they move into the production phase. In BC, we are dealing with the preparations for the 2010 Winter Games so many of the construction occupations will be in short supply.

The intent is to update the REPM annually, based on another year of LFS data plus a new COPS forecast. Currently, there is a demand for economic forecasts by occupation at the college region level. College Regions are aggregations of sub-sets of Regional Districts. Occupational forecasts are being produced at the college region level. In the appendix there is a conversion table which outlines which Regional District belongs to which College Region.

The model is only as good as the input data assumptions. Our reliance on good quality data from COPS is very important. Users of the data who perceive any problems with the assumptions in the model or question the quality of any of the data series being used should contact BC STATS at bcstats@gov.bc.ca.

May 2, 2006

Appendix 2

COPS INDUSTRY CONVERSION TO REPM

REPM INDUSTRY	COPS INDUSTRY	% of COPS INDUSTRY
ACC&FD	31 Accommodation and food services	100
AGRIC	1 Agriculture	100
BEVMFG	9 Food and Beverage Products	16
BUS_HI	25 Computer System Design Services	100
BUS_HI	24 Professional Business Services	50
BUS_HI	26 Other Professional Services	50
BUS_LO	27 Management, Administrative and Other Support	100
BUS_LO	24 Professional Business Services	50
BUS_LO	26 Other Professional Services	50
COMMUNICA	30 Information, culture and recreation	100
CONSTRUCT	8 Construction	100
EDUCATION	28 Educational Services	100
FIRE	23 Finance, Insurance, Real Estate and Leasing	100
FISHING	3 Fishing, Hunting and Trapping	100
FISHMFG	9 Food and Beverage Products	18
FOODMFG	9 Food and Beverage Products	66
FORESTLOG	2 Forestry and Logging with support activities	100
GOVT	33 Public administration	100
HEALTH	29 Health Care and Social Assistance	75
MINING	5 Mining (except Oil and Gas)	100
MINING	6 Support Activities for Mining and Oil and Gas Extraction	67
MINMFG	14 Manufactured Mineral Products	50
OTHMFG	12 Printing and Related Support Activities	100
OTHMFG	13 Rubber, Plastics and Chemicals	100
OTHMFG	14 Manufactured Mineral Products	50
OTHMFG	15 Metal Fabrication and Machinery (excluding electrical)	100
OTHMFG	16 Computer, Electronic and Electrical Products	100
OTHMFG	17 Motor Vehicle, Body, Trailer & Parts Manufacturing	100
OTHMFG	18 Other Transportation Equipment Manufacturing	100
OTHSERV	29 Health Care and Social Assistance	25
OTHSERV	32 Other services	100

COPS INDUSTRY CONVERSION TO REPM

REPM INDUSTRY	COPS INDUSTRY	% of COPS INDUSTRY
PAPERPULP	11 Paper Manufacturing	100
PETROL	4 Oil and Gas Extraction	100
PETROL	6 Support Activities for Mining and Oil and Gas Extraction	33
PETROLMFG	19 Other Manufacturing	7
RETAIL	21 Retail Trade	100
TRANOTHER	22 Transportation and Warehousing	59
TRANRAIL	22 Transportation and Warehousing	5
TRANTRUCK	22 Transportation and Warehousing	31
TRANWATER	22 Transportation and Warehousing	5
UTILITIES	7 Utilities	100
WDOTHER	10 Wood Product Manufacturing	29
WDSAWMILLS	10 Wood Product Manufacturing	71
WHOLESALE	20 Wholesale Trade	100

Appendix 3

REGIONAL DISTRICT TO COLLEGE REGION CONVERSION FOR REPM

COLLEGE REGION	REGIONAL DISTRICT #	REGIONAL DISTRICT NAME	% of REGIONAL DISTRICT
CAMOSUN	17	Capital	100
FRASER VALLEY	9	Fraser Valley	100
LOWER MAINLAND	15	Greater Vancouver	100
LOWER MAINLAND	29	Sunshine Coast	100
LOWER MAINLAND	31	Squamish Lillooet	87
MALASPINA	19	Cowichan Valley	100
MALASPINA	21	Nanaimo	100
MALASPINA	27	Powell River	100
NEW CALEDONIA	41	Cariboo	37
NEW CALEDONIA	51	Bulkley Nechako	61
NEW CALEDONIA	53	Fraser-Fort George	100
NORTH ISLAND	23	Alberni-Clayoquot	100
NORTH ISLAND	25	Comox Strathcona	100
NORTH ISLAND	43	Mount Waddington	100
NORTH ISLAND	45	Central Coast	100
NORTHERN LIGHTS	49	Kitimat Stikine	2
NORTHERN LIGHTS	55	Peace River	100
NORTHERN LIGHTS	57	Stikine	100
NORTHERN LIGHTS	59	Northern Rockies	100
NORTHWEST	47	Skeena-Queen Charlotte	100
NORTHWEST	49	Kitimat Stikine	98
NORTHWEST	51	Bulkley Nechako	39
OKANAGAN	7	Okanagan-Similkameen	100
OKANAGAN	35	Central Okanagan	100
OKANAGAN	37	North Okanagan	100
OKANAGAN	39	Columbia Shushwap	85
ROCKIES	1	East Kootenay	100
ROCKIES	3	Central Kootenays	20
ROCKIES	39	Columbia Shushwap	15
SELKIRK	3	Central Kootenays	80
SELKIRK	5	Kootenay Boundary	100
THOMPSON RIVERS	31	Squamish Lillooet	13
THOMPSON RIVERS	33	Thompson Nicola	100
THOMPSON RIVERS	41	Cariboo	63

Appendix 4

Projected Annual Growth Rates in Occupational Demand (3-digit)

Rockies College Region

Projected Annual Growth Rates in Occupational Demand

	Estimated Employment	Average Annual % Change			Avg Annual % Chg Over 4 Years
	<u>2005</u>	<u>2007/2005</u>	<u>2009/2007</u>	<u>2010/2009</u>	<u>2009/2005</u>
All occupations	37,929	2.3	2.8	3.4	2.6
A01.001 Legislators and Senior Management	478	1.8	2.4	2.4	2.2
A11.011 Administrative Services Managers	274	1.9	2.1	3.3	2.0
A12.021 Managers in Engineering, Architecture, Science & Information Systems	118	1.9	2.3	2.6	2.1
A13.061 Sales, Marketing and Advertising Managers	251	2.2	2.8	4.4	2.5
A14.072 Facility Operation and Maintenance Managers	109	2.1	2.4	3.4	2.3
A21.062 Managers in Retail Trade	943	1.9	1.3	5.7	1.6
A22.063 Managers in Food Service and Accommodation	673	6.0	7.2	11.2	7.0
A30.012 Managers in Financial and Business Services	238	2.0	1.4	4.6	1.7
A31.013 Managers in Communication (Except Broadcasting)	17	2.0	2.4	1.9	2.2
A32.031 Managers in Health, Education, Social and Community Services	182	1.2	1.0	1.8	1.1
A33.041 Managers in Public Administration	24	1.0	1.0	1.6	1.0
A34.051 Managers in Art, Culture, Recreation and Sport	30	1.7	2.0	2.6	1.9
A35.064 Managers in Protective Service	29	0.6	0.6	0.6	0.6
A36.065 Managers in Other Services	54	1.3	1.7	3.7	1.5
A37.071 Managers in Construction and Transportation	523	2.5	6.5	-4.8	4.6
A38.081 Managers in Primary Production (Except Agriculture)	147	1.2	0.5	1.1	0.9
A39.091 Managers in Manufacturing and Utilities	127	1.9	1.9	4.0	1.9
B01.111 Auditors, Accountants and Investment Professionals	784	2.0	1.9	3.6	2.0
B02.112 Human Resources and Business Service Professionals	178	1.7	2.0	2.9	1.9
B11.123 Finance and Insurance Administrative Occupations	597	2.1	2.4	2.8	2.3
B21.124 Secretaries, Records and Transcriptionists	784	1.8	2.3	1.9	2.1
B31.122 Administrative and Regulatory Occupations	635	1.8	2.3	2.3	2.1
B41.121 Clerical Supervisors	119	1.8	1.7	3.6	1.8
B51.141 Clerical Occupations, General Office Skills	985	2.0	2.2	3.0	2.2
B52.142 Office Equipment Operators	104	1.7	1.8	3.2	1.8
B53.143 Finance and Insurance Clerks	734	1.9	1.7	4.0	1.9
B54.144 Administrative Support Clerks	182	1.8	1.9	2.8	1.9
B55.145 Library Correspondence and Related Information Clerks	313	1.7	1.6	3.6	1.7

Rockies College Region

Projected Annual Growth Rates in Occupational Demand

	Estimated Employment	Average Annual % Change			Avg Annual % Chg Over 4 Years
	<u>2005</u>	<u>2007/2005</u>	<u>2009/2007</u>	<u>2010/2009</u>	<u>2009/2005</u>
B56.146 Mail and Message Distribution Occupations	147	2.4	2.3	3.2	2.4
B57.147 Recording, Scheduling and Distributing Occupations	361	2.0	2.0	4.0	2.0
C01.211 Physical Science Professionals	140	1.3	1.1	1.7	1.2
C02.212 Life Science Professionals	147	1.5	1.0	1.5	1.2
C03.213 Civil, Mechanical, Electrical and Chemical Engineers	236	2.1	2.7	1.4	2.5
C04.214 Other Engineers	116	2.2	2.2	2.4	2.2
C05.215 Architects, Urban Planners and Land Surveyors	106	2.0	2.9	1.1	2.5
C06.216 Mathematicians, Statisticians and Actuaries	-	-	-	-	-
C07.217 Computer and Information Systems Professionals	541	1.9	2.1	2.8	2.1
C11.221 Technical Occupations in Physical Sciences	107	1.2	1.0	1.7	1.1
C12.222 Technical Occupations in Life Sciences	180	1.4	0.7	1.1	1.1
C13.223 Technical Occupations in Civil, Mechanical & Industrial Engineering	114	2.2	5.0	-2.4	3.7
C14.224 Technical Occupations in Electronics and Electrical Engineering	188	1.8	2.3	2.6	2.1
C15.225 Technical Occupations in Architecture, Drafting, Surveying & Mapping	140	1.9	2.5	1.7	2.3
C16.226 Other Technical Inspectors and Regulatory Officers	78	1.7	2.4	0.9	2.1
C17.227 Transportation Officers and Controllers	78	2.7	2.5	2.1	2.6
C18.228 Technical Occupations in Computer and Information Systems	182	1.9	1.8	3.1	1.9
D01.311 Physicians Dentists and Veterinarians	236	3.0	2.9	4.3	3.0
D02.312 Optometrists, Chiropractors & Other Health Diagnosing/Treating Profs.	31	3.0	2.9	4.5	3.0
D03.313 Pharmacists, Dietitians and Nutritionists	87	2.2	1.6	5.3	2.0
D04.314 Therapy and Assessment Professionals	107	2.9	2.8	4.2	2.9
D11.315 Nurse Supervisors and Registered Nurses	525	3.0	2.9	4.4	3.1
D21.321 Medical Technologists and Technicians (Except Dental Health)	191	2.8	2.8	4.1	2.9
D22.322 Technical Occupations in Dental Health Care	54	2.8	2.9	4.9	2.9
D23.323 Other Technical Occupations in Health Care (Except Dental)	261	2.6	2.6	4.2	2.7
D31.341 Assisting Occupations in Support of Health Services	506	2.9	2.8	4.5	2.9
E01.411 Judges, Lawyers and Quebec Notaries	184	1.9	2.2	2.6	2.1
E02.415 Psychologists, Social Workers, Counsellors, Clergy & Probation Officers	303	2.0	2.0	4.0	2.0
E03 Policy and program officers researchers and consultants	270	1.7	1.8	2.6	1.8
E11.412 University Professors and Assistants	167	0.1	-0.3	-0.2	-0.1

Rockies College Region

Projected Annual Growth Rates in Occupational Demand

	Estimated Employment	Average Annual % Change			Avg Annual % Chg Over 4 Years
	<u>2005</u>	<u>2007/2005</u>	<u>2009/2007</u>	<u>2010/2009</u>	<u>2009/2005</u>
E12.413 College and Other Vocational Instructors	201	0.3	-0.1	0.3	0.1
E13.414 Secondary and Elementary School Teachers & Educational Counsellors	888	0.1	-0.4	-0.3	-0.2
E21.421 Paralegals, Social Services Workers & Occupations in Education & Religion n.e.c.	769	2.2	2.2	3.5	2.2
F01 Librarians, archivists, conservators and curators	20	1.5	1.8	1.7	1.7
F02.512 Writing, Translating and Public Relations Professionals	137	1.7	1.9	2.6	1.8
F03.513 Creative and Performing Artists	160	1.0	0.9	1.2	1.0
F11.521 Technical Occupations in Libraries, Archives Museums & Art Galleries	28	1.2	1.5	0.9	1.4
F12.522 Photographers, Graphic Arts Technicians & Technical & coordinating Occupations in Motion Pictures Broadcasting & Performing	86	1.8	2.2	2.3	2.0
F13.523 Announcers and Other Performers	19	3.0	3.5	5.1	3.4
F14.524 Creative Designers and Craftspersons	204	1.9	2.2	3.3	2.1
F15.525 Athletes, Coaches, Referees and Related Occupations	133	1.5	1.6	2.4	1.5
G01.621 Sales and Service Supervisors	278	3.9	4.2	8.3	4.2
G11.641 Sales Representatives, Wholesale Trade	257	2.2	2.9	5.4	2.6
G12.622 Technical Sales Specialists, Wholesale Trade	82	2.0	2.9	4.5	2.5
G13.623 Insurance and Real Estate Sales Occupations and Buyers	202	2.0	1.4	4.9	1.7
G21.642 Retail Salespersons and Sales Clerks	1,501	1.9	1.2	5.7	1.6
G31.661 Cashiers	698	2.5	2.1	6.8	2.3
G41.624 Chefs and Cooks	826	5.8	6.8	10.8	6.7
G51.645 Occupations in Food and Beverage Service	1,062	6.1	7.2	11.3	7.1
G61.626 Police Officers and Fire-fighters	144	0.6	0.7	0.6	0.7
G62.646 Other Occupations in Protective Service	126	0.9	0.9	1.4	0.9
G63.665 Security Guards and Related Occupations	59	2.3	2.5	4.9	2.4
G71.643 Occupations in Travel and Accommodation	199	4.7	5.4	7.7	5.3
G72.644 Tour and Recreational Guides and Casino Occupations	39	2.9	3.4	4.5	3.3
G73.667 Other Occupations in Travel Accommodation, Amusement & Recreation	47	3.9	4.5	6.6	4.4
G81.647 Childcare and Home Support Workers	727	1.7	1.6	3.4	1.7
G91.627 Technical Occupations in Personal Service	223	0.9	1.0	5.2	1.0
G92.648 Other Occupations in Personal Service	117	1.1	1.2	5.2	1.2

Rockies College Region

Projected Annual Growth Rates in Occupational Demand

	Estimated Employment	Average Annual % Change			Avg Annual % Chg Over 4 Years
	<u>2005</u>	<u>2007/2005</u>	<u>2009/2007</u>	<u>2010/2009</u>	<u>2009/2005</u>
G93.666 Cleaners	687	3.3	4.0	6.3	3.8
G94.625 Butchers and Bakers	184	2.8	2.2	6.0	2.6
G96.664 Food Counter Attendants, Kitchen Helpers & Related Occupations	1,022	5.8	6.8	10.8	6.7
G97.662 Other Sales and Related Occupations	571	1.9	1.1	5.8	1.5
G98.668 Other Elemental Service Occupations	111	2.1	2.4	6.0	2.3
H01.721 Contractors and Supervisors, Trades and Related Workers	372	2.3	5.6	-3.6	4.1
H02.722 Supervisors, Railway and Motor Transportation Occupations	34	3.1	2.8	2.3	3.0
H11.725 Plumbers, Pipefitters and Gas Fitters	254	2.5	6.2	-4.7	4.5
H12.727 Carpenters and Cabinetmakers	684	2.4	6.6	-5.2	4.7
H13.728 Masonry and Plastering Trades	262	2.6	7.3	-6.2	5.2
H14.729 Other Construction Trades	445	2.5	6.9	-5.6	4.9
H21.724 Electrical Trades and Telecommunications Occupations	478	2.0	4.6	-2.6	3.4
H22.735 Stationary Engineers and Power Station and System Operators	42	2.2	2.0	2.7	2.1
H31.723 Machinists and Related Occupations	57	1.3	1.7	4.5	1.5
H32.726 Metal Forming, Shaping and Erecting Trades	354	1.7	3.4	-0.3	2.6
H41.731 Machinery & Transportation Equipment Mechanics (Except Motor Vehicle)	653	1.5	2.0	1.5	1.7
H42.732 Automotive service technicians	391	1.2	1.2	4.9	1.2
H43.733 Other Mechanics	61	1.8	2.1	4.0	2.0
H51.734 Upholsterers, Tailors, Shoe Repairers, Jewellers & Related Occupations	66	1.3	1.5	5.6	1.4
H52.738 Printing Press Operators, Commercial Divers & Other Trades & Related Occupations n.e.c.	67	0.9	1.5	4.4	1.3
H53.744 Other installers repairers and servicers	172	2.1	4.0	-0.2	3.1
H61.742 Heavy Equipment Operators	502	1.6	3.2	-1.5	2.5
H62.737 Crane Operators Drillers and Blasters	89	1.7	3.4	-1.6	2.6
H71.741 Motor Vehicle and Transit Drivers	1,145	1.8	2.4	2.4	2.2
H72.736 Train Crew Operating Occupations	94	3.6	3.0	2.4	3.4
H73.743 Other Transport Equipment Operators and Related Workers	88	3.0	2.7	2.3	3.0
H81.745 Longshore Workers and Material Handlers	386	1.7	1.9	3.8	1.8
H82.761 Trades Helpers and Labourers	415	2.4	6.4	-4.9	4.6

Rockies College Region

Projected Annual Growth Rates in Occupational Demand

	Estimated Employment	Average Annual % Change			Avg Annual % Chg Over 4 Years
	<u>2005</u>	<u>2007/2005</u>	<u>2009/2007</u>	<u>2010/2009</u>	<u>2009/2005</u>
H83.762 Public Works and Other Labourers n.e.c.	49	2.1	3.2	0.2	2.7
I01.825 Contractors, Operators & Supervisors in Agriculture, Horticulture & Aquaculture	348	1.0	0.6	4.0	0.8
I02.843 Agriculture and Horticulture Workers	286	1.0	0.5	4.2	0.7
I11.821 Supervisors, Logging and Forestry	61	1.5	0.1	0.7	0.8
I12.822 Supervisors, Mining Oil and Gas	147	1.0	0.7	1.4	0.8
I13.823 Underground Miners, Oil and Gas Drillers and Related Workers	166	0.9	0.6	1.6	0.8
I14.841 Mine Service Workers and Operators in Oil and Gas Drilling	83	1.4	1.0	0.8	1.2
I15.824 Logging Machinery Operators	111	1.5	0.1	0.2	0.8
I16.842 Logging and Forestry Workers	174	1.7	-0.1	-0.5	0.8
I17.826 Fishing Vessel Masters and Skippers and Fishermen/women	-	-	-	-	-
I18.844 Other Fishing and Trapping Occupations	-	-	-	-	-
I21.861 Primary Production Labourers	436	1.4	0.8	1.4	1.1
J01.921 Supervisors, Processing Occupations	127	1.7	1.3	3.2	1.5
J02.922 Supervisors, Assembly and Fabrication	23	1.4	2.3	4.2	1.9
J11.923 Central Control & Process Operators in Manufacturing & Processing	67	4.2	1.6	-0.4	3.0
J12.941 Machine Operators & Related Workers in Metal & Mineral Products Processing	78	1.0	1.5	1.7	1.3
J13.942 Machine Operators & Related Workers in Chemical, Plastic & Rubber Processing	22	1.5	1.6	2.3	1.6
J14.943 Machine Operators & Related Workers in Pulp & Paper Production & Wood Processing	401	0.7	0.9	4.4	0.8
J15.944 Machine Operators and Related Workers in Textile Processing	-	-	-	-	-
J16.945 Machine Operators and Related Workers in Fabric, Fur & Leather Products Manufacturing	47	1.3	1.8	5.9	1.6
J17.946 Machine Operators & Related Workers in Food, Beverage & Tobacco Processing	56	3.4	2.0	2.2	2.8
J18.947 Printing Machine Operators and Related Occupations	58	1.3	1.4	5.2	1.4
J19.951 Machining, Metalworking, Woodworking & Related Machine Operators	43	1.1	1.9	4.5	1.5
J21.948 Mechanical Electrical and Electronics Assemblers	58	1.5	2.1	4.7	1.8

Rockies College Region

Projected Annual Growth Rates in Occupational Demand

	Estimated Employment	Average Annual % Change			Avg Annual % Chg Over 4 Years
	<u>2005</u>	<u>2007/2005</u>	<u>2009/2007</u>	<u>2010/2009</u>	<u>2009/2005</u>
J22.949 Other Assembly and Related Occupations	129	1.5	2.5	3.6	2.0
J31.961 Labourers in Processing Manufacturing and Utilities	609	1.2	1.3	4.1	1.2

Appendix 5

Projected Annual Growth Rates in Occupational Demand (4-digit)

Rockies College Region

Projected Annual Growth Rates in Occupational Demand

	Estimated Employment	Average Annual % Change			Avg Annual % Chg Over 4 Years
	<u>2005</u>	<u>2007/2005</u>	<u>2009/2007</u>	<u>2010/2009</u>	<u>2009/2005</u>
All occupations	37,929	2.3	2.8	3.4	2.6
A Management occupations	4,217	2.6	3.2	4.1	3.0
A0 Senior management occupations	478	1.8	2.4	2.4	2.2
A01.001 Legislators and Senior Management	478	1.8	2.4	2.4	2.2
A011.0011 Legislators	13	0.5	0.5	0.4	0.5
A012.0012 Senior Government Managers and Officials	40	0.7	0.9	0.9	0.8
A013.0013 Senior Managers - Financial, Communications and Other Business Services	117	2.0	2.0	3.4	2.0
A014.0014 Senior Managers - Health, Education, Social and Community Services and Membership Organizations	52	1.6	1.6	3.9	1.6
A015.0015 Senior Managers - Trade, Broadcasting and Other Services n.e.c.	87	2.7	3.1	7.1	3.0
A016.0016 Senior Managers - Goods Production, Utilities, Transportation and Construction	170	1.7	3.0	-0.6	2.4
A1 Specialist managers	753	2.0	2.4	3.6	2.3
A11.011 Administrative Services Managers	274	1.9	2.1	3.3	2.0
A111.0111 Financial Managers	139	2.0	2.2	3.4	2.1
A112.0112 Human Resources Managers	54	1.9	1.7	3.0	1.8
A113.0113 Purchasing Managers	14	2.0	2.4	4.1	2.2
A114.0114 Other Administrative Services Managers	67	1.9	2.2	2.9	2.1
A12.021 Managers in Engineering, Architecture, Science and Information Systems	118	1.9	2.3	2.6	2.1
A121.0211 Engineering Managers	32	1.8	2.7	1.6	2.3
A122.0213 Computer and Information Systems Managers	72	1.9	2.1	3.1	2.0
A123.0212 Architecture and Science Managers	14	1.8	2.2	1.9	2.0
A13.061 Sales, Marketing and Advertising Managers	251	2.2	2.8	4.4	2.5
A131.0611 Sales, Marketing and Advertising Managers	253	2.2	2.7	4.4	2.5
A14.072 Facility Operation and Maintenance Managers	109	2.1	2.4	3.4	2.3
A141.0721 Facility Operation and Maintenance Managers	107	2.1	2.5	3.5	2.3

Rockies College Region

Projected Annual Growth Rates in Occupational Demand

	Estimated Employment	Average Annual % Change			Avg Annual % Chg Over 4 Years
	<u>2005</u>	<u>2007/2005</u>	<u>2009/2007</u>	<u>2010/2009</u>	<u>2009/2005</u>
A2 Managers in retail trade, food and accommodation services	1,614	3.6	3.9	8.2	3.9
A21.062 Managers in Retail Trade	943	1.9	1.3	5.7	1.6
A211.0621 Retail Trade Managers	942	1.9	1.3	5.7	1.6
A22.063 Managers in Food Service and Accommodation	673	6.0	7.2	11.2	7.0
A221.0631 Restaurant and Food Service Managers	503	6.0	7.1	11.2	7.0
A222.0632 Accommodation Service Managers	171	6.0	7.2	11.2	7.0
A3 Other managers n.e.c.	1,371	1.9	3.3	-0.2	2.6
A30.012 Managers in Financial and Business Services	238	2.0	1.4	4.6	1.7
A301.0121 Insurance, Real Estate and Financial Brokerage Managers	62	2.0	1.7	4.0	1.9
A302.0122 Banking, Credit and Other Investment Managers	157	1.9	1.1	5.2	1.6
A303.0123 Other Business Services Managers	20	2.0	2.7	2.7	2.4
A31.013 Managers in Communication (Except Broadcasting)	17	2.0	2.4	1.9	2.2
A311.0131 Telecommunication Carriers Managers	14	1.8	2.3	1.7	2.1
A312.0132 Postal and Courier Services Managers	-	-	-	-	-
A32.031 Managers in Health, Education, Social and Community Services	182	1.2	1.0	1.8	1.1
A321.0311 Managers in Health Care	53	2.9	2.9	4.2	3.0
A322.0312 Administrators - Post-Secondary Education and Vocational Training	37	0.2	-0.2	-0.2	0.0
A323.0313 School Principals and Administrators of Elementary and Secondary Education	64	0.1	-0.4	-0.3	-0.1
A324.0314 Managers in Social, Community and Correctional Services	29	2.1	2.1	3.9	2.1
A33.041 Managers in Public Administration	24	1.0	1.0	1.6	1.0
A331.0411 Government Managers - Health and Social Policy Development and Program Administration	-	-	-	-	-
A332.0412 Government Managers - Economic Analysis, Policy Development and Program Administration	-	-	-	-	-
A333.0413 Government Managers - Education Policy Development and Program Administration	-	-	-	-	-
A334.0414 Other Managers in Public Administration	-	-	-	-	-
A34.051 Managers in Art, Culture, Recreation and Sport	30	1.7	2.0	2.6	1.9

Rockies College Region

Projected Annual Growth Rates in Occupational Demand

	Estimated Employment	Average Annual % Change			Avg Annual % Chg Over 4 Years
	<u>2005</u>	<u>2007/2005</u>	<u>2009/2007</u>	<u>2010/2009</u>	<u>2009/2005</u>
A341.0511 Library, Archive, Museum and Art Gallery Managers	-	-	-	-	-
A342.0512 Managers - Publishing, Motion Pictures, Broadcasting and Performing Arts	11	1.8	2.3	2.3	2.1
A343.0513 Recreation and Sports Program and Service Directors	15	1.6	1.8	2.8	1.7
A35.064 Managers in Protective Service	29	0.6	0.6	0.6	0.6
A351.0641 Commissioned Police Officers	-	-	-	-	-
A352.0642 Fire Chiefs and Senior Fire-fighting Officers	-	-	-	-	-
A353.0643 Commissioned Officers, Armed Forces	19	0.6	0.6	0.6	0.6
A36.065 Managers in Other Services	54	1.3	1.7	3.7	1.5
A361.0651 Other Services Managers	54	1.3	1.7	3.7	1.5
A37.071 Managers in Construction and Transportation	523	2.5	6.5	-4.8	4.6
A371.0711 Construction Managers	313	2.6	7.0	-5.8	5.0
A372.0712 Residential Home Builders and Renovators	135	2.6	7.2	-6.1	5.1
A373.0713 Transportation Managers	78	2.0	2.5	2.3	2.3
A38.081 Managers in Primary Production (Except Agriculture)	147	1.2	0.5	1.1	0.9
A381.0811 Primary Production Managers (Except Agriculture)	146	1.2	0.5	1.1	0.9
A39.091 Managers in Manufacturing and Utilities	127	1.9	1.9	4.0	1.9
A391.0911 Manufacturing Managers	107	1.9	1.8	4.5	1.9
A392.0912 Utilities Managers	18	2.7	2.2	1.4	2.5
B Business, finance and administrative occupations	5,927	1.9	2.1	3.1	2.0
B0 Professional occupations in business and finance	963	1.9	1.9	3.5	2.0
B01.111 Auditors, Accountants and Investment Professionals	784	2.0	1.9	3.6	2.0
B011.1111 Financial Auditors and Accountants	464	2.0	2.4	2.8	2.3
B012.1112 Financial and Investment Analysts	66	2.0	1.4	4.0	1.7
B013.1113 Securities Agents, Investment Dealers and Brokers	86	1.9	1.1	5.1	1.5
B014.1114 Other Financial Officers	170	1.9	1.2	4.8	1.6
B02.112 Human Resources and Business Service Professionals	178	1.7	2.0	2.9	1.9
B021.1121 Specialists in Human Resources	75	1.5	1.4	3.1	1.5
B022.1122 Professional Occupations in Business Services to Management	102	2.0	2.4	2.8	2.2

Rockies College Region

Projected Annual Growth Rates in Occupational Demand

	Estimated Employment	Average Annual % Change			Avg Annual % Chg Over 4 Years
	<u>2005</u>	<u>2007/2005</u>	<u>2009/2007</u>	<u>2010/2009</u>	<u>2009/2005</u>
B1 Finance and insurance administration occupations	599	2.0	2.4	2.8	2.3
B11.123 Finance and Insurance Administrative Occupations	597	2.1	2.4	2.8	2.3
B111.1231 Bookkeepers	417	2.1	3.0	1.9	2.6
B112.1232 Loan Officers	56	1.9	1.1	5.1	1.5
B113.1233 Insurance Adjusters and Claims Examiners	83	1.9	1.1	5.1	1.5
B114.1234 Insurance Underwriters	21	1.9	1.1	5.1	1.5
B115.1235 Assessors, Valuers and Appraisers	14	1.1	1.1	1.9	1.1
B116.1236 Customs, Ship and Other Brokers	-	-	-	-	-
B2 Secretaries	786	1.8	2.3	1.9	2.1
B21.124 Secretaries, Records and Transcriptionists	784	1.8	2.3	1.9	2.1
B211.1241 Secretaries (Except Legal and Medical)	546	1.6	2.3	1.3	2.0
B212.1242 Legal Secretaries	136	2.0	2.3	2.7	2.2
B213.1243 Medical Secretaries	91	3.0	2.9	4.4	3.0
B214.1244 Court Recorders and Medical Transcriptionists	11	2.7	2.7	3.9	2.8
B3 Administrative and regulatory occupations	635	1.8	2.4	2.3	2.1
B31.122 Administrative and Regulatory Occupations	635	1.8	2.3	2.3	2.1
B311.1221 Administrative Officers	411	1.9	2.5	2.3	2.3
B312.1222 Executive Assistants	60	1.6	1.8	2.4	1.7
B313.1223 Personnel and Recruitment Officers	18	1.8	2.0	2.6	1.9
B314.1224 Property Administrators	28	2.3	3.9	1.0	3.2
B315.1225 Purchasing Agents and Officers	52	1.6	2.1	3.2	1.9
B316.1226 Conference and Event Planners	22	2.2	2.4	4.6	2.4
B317.1227 Court Officers and Justices of the Peace	-	-	-	-	-
B318.1228 Immigration, Employment Insurance and Revenue Officers	35	0.6	0.6	0.6	0.6
B4 Clerical supervisors	119	1.8	1.7	3.6	1.8
B41.121 Clerical Supervisors	119	1.8	1.7	3.6	1.8
B411.1211 Supervisors, General Office & Administrative Support Clerks	27	1.6	1.7	2.7	1.7
B412.1212 Supervisors, Finance and Insurance Clerks	40	1.9	1.5	4.4	1.7
B413.1213 Supervisors, Library Correspondence and Related Information	14	1.3	1.2	2.5	1.3
B414.1214 Supervisors, Mail and Message Distribution Occupations	-	-	-	-	-

Rockies College Region

Projected Annual Growth Rates in Occupational Demand

	Estimated Employment	Average Annual % Change			Avg Annual % Chg Over 4 Years
	<u>2005</u>	<u>2007/2005</u>	<u>2009/2007</u>	<u>2010/2009</u>	<u>2009/2005</u>
B415.1215 Supervisors, Recording, Distributing and Scheduling Occupations	26	1.8	2.0	4.4	2.0
B5 Clerical occupations	2,826	1.9	2.0	3.4	2.0
B51.141 Clerical Occupations, General Office Skills	985	2.0	2.2	3.0	2.2
B511.1411 General Office Clerks	620	1.8	2.1	2.4	2.0
B513.1413 Records Management and Filing Clerks	47	2.3	2.3	4.0	2.4
B514.1414 Receptionists and Switchboard Operators	317	2.3	2.4	3.9	2.4
B52.142 Office Equipment Operators	104	1.7	1.8	3.2	1.8
B522.1422 Data Entry Clerks	89	1.6	1.7	3.1	1.7
B523.1423 Desktop Publishing Operators and Related Occupations	-	-	-	-	-
B524.1424 Telephone Operators	-	-	-	-	-
B53.143 Finance and Insurance Clerks	734	1.9	1.7	4.0	1.9
B531.1431 Accounting and Related Clerks	306	1.9	2.3	3.0	2.2
B532.1432 Payroll Clerks	70	1.8	2.2	2.6	2.0
B533.1433 Customer Service Representatives - Financial Services	255	1.9	1.1	5.3	1.5
B534.1434 Banking, Insurance and Other Financial Clerks	80	1.9	1.2	5.1	1.6
B535.1435 Collectors	25	2.0	1.2	3.6	1.7
B54.144 Administrative Support Clerks	182	1.8	1.9	2.8	1.9
B541.1441 Administrative Clerks	154	1.9	2.0	2.9	2.0
B542.1442 Personnel Clerks	20	2.0	1.9	3.3	2.0
B543.1443 Court Clerks	-	-	-	-	-
B55.145 Library, Correspondence and Related Information Clerks	313	1.7	1.6	3.6	1.7
B551.1451 Library Clerks	14	1.4	1.4	1.3	1.4
B552.1452 Correspondence, Publication and Related Clerks	-	-	-	-	-
B553.1453 Customer Service, Information and Related Clerks	237	2.0	1.8	4.3	1.9
B554.1454 Survey Interviewers and Statistical Clerks	56	0.9	1.0	1.1	0.9
B56.146 Mail and Message Distribution Occupations	147	2.4	2.3	3.2	2.4
B561.1461 Mail, Postal and Related Clerks	55	2.5	2.5	2.8	2.5
B562.1462 Letter Carriers	46	2.9	3.0	2.4	3.0
B563.1463 Couriers, Messengers and Door-to-Door Distributors	46	1.9	1.5	4.4	1.7

Rockies College Region

Projected Annual Growth Rates in Occupational Demand

	Estimated Employment	Average Annual % Change			Avg Annual % Chg Over 4 Years
	<u>2005</u>	<u>2007/2005</u>	<u>2009/2007</u>	<u>2010/2009</u>	<u>2009/2005</u>
B57.147 Recording, Scheduling and Distributing Occupations	361	2.0	2.0	4.0	2.0
B571.1471 Shippers and Receivers	162	2.1	2.1	4.7	2.2
B572.1472 Storekeepers and Parts Clerks	55	1.8	1.5	5.0	1.7
B573.1473 Production Clerks	15	2.7	2.2	3.8	2.5
B574.1474 Purchasing and Inventory Clerks	58	2.0	1.8	4.2	1.9
B575.1475 Dispatchers and Radio Operators	66	1.7	2.3	1.4	2.1
B576.1476 Transportation Route and Crew	-	-	-	-	-
C Natural and applied sciences and related occupations	2,360	1.8	2.1	1.8	2.0
C0 Professional occupations in natural and applied sciences	1,288	1.9	2.1	2.1	2.0
C01.211 Physical Science Professionals	140	1.3	1.1	1.7	1.2
C011.2111 Physicists and Astronomers	-	-	-	-	-
C012.2112 Chemists	25	2.1	1.6	2.3	1.9
C013.2113 Geologists, Geochemists and Geophysicists	99	1.2	0.9	1.4	1.1
C014.2114 Meteorologists	-	-	-	-	-
C015.2115 Other Professional Occupations in Physical Sciences	-	-	-	-	-
C02.212 Life Science Professionals	147	1.5	1.0	1.5	1.2
C021.2121 Biologists and Related Scientists	51	1.5	1.5	2.0	1.5
C022.2122 Forestry Professionals	90	1.5	0.6	1.2	1.1
C023.2123 Agricultural Representatives, Consultants and Specialists	-	-	-	-	-
C03.213 Civil, Mechanical, Electrical and Chemical Engineers	236	2.1	2.7	1.4	2.5
C031.2131 Civil Engineers	115	2.0	3.2	0.4	2.7
C032.2132 Mechanical Engineers	53	2.2	2.3	2.3	2.3
C033.2133 Electrical and Electronics Engineers	53	1.8	2.3	2.5	2.1
C034.2134 Chemical Engineers	13	4.2	1.9	1.8	3.1
C04.214 Other Engineers	116	2.2	2.2	2.4	2.2
C041.2141 Industrial and Manufacturing Engineers	13	1.6	2.2	2.3	1.9
C042.2142 Metallurgical and Materials Engineers	-	-	-	-	-
C043.2143 Mining Engineers	11	2.2	3.4	0.8	2.8
C044.2144 Geological Engineers	14	2.0	2.3	1.5	2.2
C045.2145 Petroleum Engineers	-	-	-	-	-

Rockies College Region

Projected Annual Growth Rates in Occupational Demand

	Estimated Employment	Average Annual % Change			Avg Annual % Chg Over 4 Years
	<u>2005</u>	<u>2007/2005</u>	<u>2009/2007</u>	<u>2010/2009</u>	<u>2009/2005</u>
C046.2146 Aerospace Engineers	-	-	-	-	-
C047.2147 Computer Engineers (Except Software Engineers)	42	1.9	2.3	3.1	2.1
C048.2148 Other Professional Engineers n.e.c.	20	2.0	2.2	3.2	2.1
C05.215 Architects, Urban Planners and Land Surveyors	106	2.0	2.9	1.1	2.5
C051.2151 Architects	52	2.1	2.8	1.9	2.5
C052.2152 Landscape Architects	-	-	-	-	-
C053.2153 Urban and Land Use Planners	20	1.7	3.5	-1.6	2.6
C054.2154 Land Surveyors	23	2.0	3.0	1.2	2.6
C06.216 Mathematicians, Statisticians and Actuaries	-	-	-	-	-
C061.2161 Mathematicians, Statisticians and Actuaries	-	-	-	-	-
C07.217 Computer and Information Systems Professionals	541	1.9	2.1	2.8	2.1
C071.2171 Information Systems Analysts and Consultants	174	1.9	2.1	2.9	2.0
C072.2172 Database Analysts and Data Administrators	27	1.8	1.9	2.7	1.9
C073.2173 Software Engineers	69	2.0	2.3	2.9	2.2
C074.2174 Computer Programmers and Interactive Media Developers	195	2.0	2.1	2.9	2.1
C075.2175 Web Designers and Developers	74	1.9	2.2	2.7	2.1
C1 Technical occupations related to natural and applied sciences	1,072	1.8	2.1	1.5	2.0
C11.221 Technical Occupations in Physical Sciences	107	1.2	1.0	1.7	1.1
C111.2211 Chemical Technologists and Technicians	24	1.6	1.4	1.9	1.5
C112.2212 Geological and Mineral Technologists and Technicians	81	1.0	0.8	1.6	0.9
C113.2213 Meteorological Technicians	-	-	-	-	-
C12.222 Technical Occupations in Life Sciences	180	1.4	0.7	1.1	1.1
C121.2221 Biological Technologists and Technicians	31	1.3	1.3	2.3	1.3
C122.2222 Agricultural and Fish Products Inspectors	-	-	-	-	-
C123.2223 Forestry Technologists and Technicians	112	1.5	0.3	0.6	0.9
C124.2224 Conservation and Fishery Officers	14	1.0	0.9	1.3	1.0
C125.2225 Landscape and Horticultural Technicians and Specialists	16	1.6	2.1	1.3	1.9
C13.223 Technical Occupations in Civil, Mechanical and Industrial Engineering	114	2.2	5.0	-2.4	3.7
C131.2231 Civil Engineering Technologists and Technicians	26	1.9	3.2	-0.2	2.6

Rockies College Region

Projected Annual Growth Rates in Occupational Demand

	Estimated Employment	Average Annual % Change			Avg Annual % Chg Over 4 Years
	<u>2005</u>	<u>2007/2005</u>	<u>2009/2007</u>	<u>2010/2009</u>	<u>2009/2005</u>
C132.2232 Mechanical Engineering Technologists and Technicians	19	2.5	3.2	1.1	2.9
C133.2233 Industrial Engineering and Manufacturing Technologists and Technicians	12	2.0	2.7	2.0	2.4
C134.2234 Construction Estimators	58	2.5	6.8	-5.2	4.8
C14.224 Technical Occupations in Electronics & Electrical Engineering	188	1.8	2.3	2.6	2.1
C141.2241 Electrical and Electronics Engineering Technologists and Technicians	52	1.7	2.1	3.1	2.0
C142.2242 Electronic Service Technicians (Household and Business Equipment)	104	1.7	2.6	2.7	2.2
C143.2243 Industrial Instrument Technicians and Mechanics	23	2.5	1.7	1.0	2.2
C144.2244 Aircraft Instrument Electrical and Avionics Mechanics, Technicians and Inspectors	-	-	-	-	-
C15.225 Technical Occupations in Architecture, Drafting, Surveying and Mapping	140	1.9	2.5	1.7	2.3
C151.2251 Architectural Technologists and Technicians	15	2.0	2.9	1.5	2.5
C152.2252 Industrial Designers	11	2.0	2.9	2.3	2.5
C153.2253 Drafting Technologists and Technicians	75	2.1	2.7	1.7	2.5
C154.2254 Land Survey Technologists and Technicians	-	-	-	-	-
C155.2255 Mapping and Related Technologists and Technicians	31	1.4	1.5	2.1	1.5
C16.226 Other Technical Inspectors and Regulatory Officers	78	1.7	2.4	0.9	2.1
C161.2261 Nondestructive Testers and Inspectors	-	-	-	-	-
C162.2262 Engineering Inspectors and Regulatory Officers	11	1.4	1.6	2.3	1.5
C163.2263 Inspectors in Public and Environmental Health and Occupational Health and Safety	34	1.7	2.1	1.5	1.9
C164.2264 Construction Inspectors	24	1.8	3.4	-1.1	2.7
C17.227 Transportation Officers and Controllers	78	2.7	2.5	2.1	2.6
C171.2271 Air Pilots, Flight Engineers and Flying Instructors	37	2.6	2.5	2.2	2.6
C172.2272 Air Traffic Control and Related Occupations	-	-	-	-	-
C173.2273 Deck Officers, Water Transport	15	2.5	2.1	1.8	2.4
C174.2274 Engineer Officers, Water Transport	-	-	-	-	-

Rockies College Region

Projected Annual Growth Rates in Occupational Demand

	Estimated Employment	Average Annual % Change			Avg Annual % Chg Over 4 Years
	<u>2005</u>	<u>2007/2005</u>	<u>2009/2007</u>	<u>2010/2009</u>	<u>2009/2005</u>
C175.2275 Railway Traffic Controllers and Marine Traffic Regulators	-	-	-	-	-
C18.228 Technical Occupations in Computer and Information Systems	182	1.9	1.8	3.1	1.9
C181.2281 Computer and Network Operators and Web Technicians	97	2.0	1.8	3.0	1.9
C182.2282 User Support Technicians	70	1.9	1.7	3.1	1.9
C183.2283 Systems Testing Technicians	14	1.9	2.1	3.3	2.0
D Health occupations	1,998	2.9	2.8	4.4	2.9
D0 Professional occupations in health	462	2.8	2.7	4.5	2.8
D01.311 Physicians Dentists and Veterinarians	236	3.0	2.9	4.3	3.0
D011.3111 Specialist Physicians	52	3.0	3.0	4.4	3.1
D012.3112 General Practitioners and Family Physicians	111	3.1	3.0	4.4	3.1
D013.3113 Dentists	55	3.1	3.0	4.4	3.1
D014.3114 Veterinarians	18	2.0	2.3	2.6	2.2
D02.312 Optometrists, Chiropractors and Other Health Diagnosing and Treating Professionals	31	3.0	2.9	4.5	3.0
D021.3121 Optometrists	-	-	-	-	-
D022.3122 Chiropractors	16	3.1	3.0	4.4	3.1
D023.3123 Other Professional Occupations in Health Diagnosing and Treating	-	-	-	-	-
D03.313 Pharmacists, Dietitians and Nutritionists	87	2.2	1.6	5.3	2.0
D031.3131 Pharmacists	67	2.1	1.3	5.6	1.7
D032.3132 Dietitians and Nutritionists	20	2.8	2.7	4.4	2.9
D04.314 Therapy and Assessment Professionals	107	2.9	2.8	4.2	2.9
D041.3141 Audiologists and Speech-Language Pathologists	16	2.3	2.2	3.3	2.3
D042.3142 Physiotherapists	48	3.1	3.0	4.4	3.1
D043.3143 Occupational Therapists	26	3.0	3.0	4.4	3.1
D044.3144 Other Professional Occupations in Therapy and Assessment	18	2.8	2.7	4.2	2.8
D1 Nurse supervisors and registered nurses	525	3.0	2.9	4.4	3.1
D11.315 Nurse Supervisors and Registered Nurses	525	3.0	2.9	4.4	3.1
D111.3151 Head Nurses and Supervisors	18	2.9	2.9	4.3	3.0
D112.3152 Registered Nurses	507	3.0	2.9	4.4	3.1

Rockies College Region

Projected Annual Growth Rates in Occupational Demand

	Estimated Employment	Average Annual % Change			Avg Annual % Chg Over 4 Years
	<u>2005</u>	<u>2007/2005</u>	<u>2009/2007</u>	<u>2010/2009</u>	<u>2009/2005</u>
D2 Technical and related occupations in health	506	2.7	2.7	4.2	2.8
D21.321 Medical Technologists and Technicians (Except Dental Health)	191	2.8	2.8	4.1	2.9
D211.3211 Medical Laboratory Technologists and Pathologists' Assistants	58	2.9	2.8	4.2	2.9
D212.3212 Medical Laboratory Technicians	45	2.9	2.8	4.3	2.9
D213.3213 Veterinary and Animal Health Technologists and Technicians	25	2.0	2.3	2.8	2.2
D214.3214 Respiratory Therapists, Clinical Perfusionists and Cardio- Pulmonary Technologists	13	3.0	2.9	4.5	3.0
D215.3215 Medical Radiation Technologists	31	3.0	2.9	4.4	3.1
D216.3216 Medical Sonographers	-	-	-	-	-
D217.3217 Cardiology Technologists	-	-	-	-	-
D218.3218 Electroencephalographic and Other Diagnostic Technologists n.e.c.	-	-	-	-	-
D219.3219 Other Medical Technologists and Technicians (Except Dental Health)	-	-	-	-	-
D22.322 Technical Occupations in Dental Health Care	54	2.8	2.9	4.9	2.9
D221.3221 Denturists	-	-	-	-	-
D222.3222 Dental Hygienists and Dental Therapists	35	3.1	3.0	4.5	3.2
D223.3223 Dental Technologists, Technicians and Laboratory Bench Workers	14	2.1	2.5	5.5	2.3
D23.323 Other Technical Occupations in Health Care (Except Dental)	261	2.6	2.6	4.2	2.7
D231.3231 Opticians	24	2.0	1.2	5.7	1.6
D232.3232 Midwives and Practitioners of Natural Healing	21	2.8	2.6	4.6	2.8
D233.3233 Licensed Practical Nurses	107	3.0	3.0	4.4	3.1
D234.3234 Ambulance Attendants and Other Paramedical Occupations	67	2.2	2.4	2.7	2.3
D235.3235 Other Technical Occupations in Therapy and Assessment	43	2.5	2.5	4.9	2.5
D3 Assisting occupations in support of health services	505	2.9	2.8	4.5	2.9
D31.341 Assisting Occupations in Support of Health Services	506	2.9	2.8	4.5	2.9
D311.3411 Dental Assistants	85	3.0	3.0	4.4	3.1
D312.3413 Nurse Aides, Orderlies and Patient Service Associates	308	3.0	3.0	4.4	3.1

Rockies College Region

Projected Annual Growth Rates in Occupational Demand

	Estimated Employment	Average Annual % Change			Avg Annual % Chg Over 4 Years
	<u>2005</u>	<u>2007/2005</u>	<u>2009/2007</u>	<u>2010/2009</u>	<u>2009/2005</u>
D313.3414 Other Assisting Occupations in Support of Health Services	111	2.5	2.1	5.0	2.4
E Occupations in social science, education, government service & religion	2,780	1.2	1.0	1.8	1.1
E0 Judges, lawyers, psychologists, social workers, ministers of religion and policy and program officers	755	1.9	2.0	3.2	2.0
E01.411 Judges, Lawyers and Quebec Notaries	184	1.9	2.2	2.6	2.1
E011.4111 Judges	-	-	-	-	-
E012.4112 Lawyers and Quebec Notaries	180	2.0	2.3	2.6	2.2
E02.415 Psychologists, Social Workers, Counsellors, Clergy and Probation Officers	303	2.0	2.0	4.0	2.0
E021.4151 Psychologists	32	2.3	2.2	3.4	2.3
E022.4152 Social Workers	90	2.3	2.3	3.4	2.3
E023.4153 Family, Marriage and Other Related Counsellors	87	2.7	2.6	4.2	2.7
E024.4154 Ministers of Religion	82	1.0	1.1	5.1	1.0
E025.4155 Probation and Parole Officers and Related Occupations	12	0.9	0.9	1.1	0.9
E03 Policy and program officers, researchers and consultants	270	1.7	1.8	2.6	1.8
E031.4161 Natural and Applied Science Policy Researchers, Consultants and Program Officers	35	1.7	1.8	2.4	1.8
E032.4162 Economists and Economic Policy Researchers and Analysts	11	1.5	1.6	2.3	1.6
E033.4163 Business Development Officers and Marketing Researchers and Consultants	71	2.2	2.3	3.2	2.3
E034.4164 Social Policy Researchers, Consultants & Program Officers	45	1.5	1.6	2.5	1.6
E035.4166 Education Policy Researchers Consultants & Program Officers	26	0.5	0.3	0.5	0.4
E036.4167 Recreation, Sports and Fitness Program Supervisors and Consultants	28	2.1	2.2	3.6	2.2
E037.4168 Program Officers Unique to Government	-	-	-	-	-
E038.4169 Other Professional Occupations in Social Science	-	-	-	-	-
E039.4165 Health Policy Researchers, Consultants & Program Officers	32	2.1	2.2	3.4	2.2
E1 Teachers and professors	1,256	0.1	-0.3	-0.2	-0.1
E11.412 University Professors and Assistants	167	0.1	-0.3	-0.2	-0.1

Rockies College Region

Projected Annual Growth Rates in Occupational Demand

	Estimated Employment	Average Annual % Change			Avg Annual % Chg Over 4 Years
	<u>2005</u>	<u>2007/2005</u>	<u>2009/2007</u>	<u>2010/2009</u>	<u>2009/2005</u>
E111.4121 University Professors	84	0.0	-0.4	-0.4	-0.2
E112.4122 Post-Secondary Teaching and Research Assistants	83	0.2	-0.2	-0.1	0.0
E12.413 College and Other Vocational Instructors	201	0.3	-0.1	0.3	0.1
E121.4131 College and Other Vocational Instructors	201	0.3	0.0	0.2	0.1
E13.414 Secondary and Elementary School Teachers and Educational Counsellors	888	0.1	-0.4	-0.3	-0.2
E131.4141 Secondary School Teachers	351	0.1	-0.4	-0.3	-0.2
E132.4142 Elementary School and Kindergarten Teachers	489	0.1	-0.4	-0.3	-0.2
E133.4143 Educational Counsellors	47	0.2	-0.3	-0.1	0.0
E2 Paralegals, social services workers and occupations in education and religion n.e.c.	769	2.2	2.2	3.5	2.2
E21.421 Paralegals, Social Services Workers and Occupations in Education and Religion n.e.c.	769	2.2	2.2	3.5	2.2
E211.4211 Paralegal and Related Occupations	73	1.9	2.2	2.7	2.1
E212.4212 Community and Social Service Workers	221	2.4	2.3	3.8	2.4
E213.4213 Employment Counsellors	31	1.9	1.8	3.0	1.9
E214.4215 Instructors and Teachers of Persons with Disabilities	22	1.1	0.8	1.5	1.0
E215.4216 Other Instructors	85	0.3	0.0	0.4	0.2
E216.4217 Other Religious Occupations	17	1.0	1.1	4.9	1.0
E217.4214 Early Childhood Educators and Assistants	319	2.9	2.8	4.3	2.9
F Occupations in art, culture, recreation and sport	787	1.6	1.8	2.4	1.7
F0 Professional Occupations in Art and Culture	318	1.3	1.4	1.8	1.4
F01 Librarians, archivists, conservators and curators	20	1.5	1.8	1.7	1.7
F011.5111 Librarians	13	1.4	1.5	1.6	1.5
F012.5112 Conservators and Curators	-	-	-	-	-
F013.5113 Archivists	-	-	-	-	-
F02.512 Writing, Translating and Public Relations Professionals	137	1.7	1.9	2.6	1.8
F021.5121 Authors and Writers	37	1.8	2.1	2.2	2.0
F022.5122 Editors	14	1.6	1.8	2.1	1.8
F023.5123 Journalists	-	-	-	-	-

Rockies College Region

Projected Annual Growth Rates in Occupational Demand

	Estimated Employment	Average Annual % Change			Avg Annual % Chg Over 4 Years
	<u>2005</u>	<u>2007/2005</u>	<u>2009/2007</u>	<u>2010/2009</u>	<u>2009/2005</u>
F024.5124 Professional Occupations in Public Relations and Communications	56	1.6	1.7	3.0	1.7
F025.5125 Translators, Terminologists and Interpreters	21	1.8	2.0	2.3	1.9
F03.513 Creative and Performing Artists	160	1.0	0.9	1.2	1.0
F031.5131 Producers, Directors, Choreographers & Related Occupations	25	1.7	1.9	1.8	1.8
F032.5132 Conductors, Composers and Arrangers	-	-	-	-	-
F033.5133 Musicians and Singers	69	0.5	0.2	0.5	0.3
F034.5134 Dancers	17	0.4	0.1	0.5	0.3
F035.5135 Actors and Comedians	14	1.7	1.9	1.7	1.8
F036.5136 Painters, Sculptors and Other Visual Artists	29	1.5	1.7	1.8	1.6
F1 Technical occupations in art, culture, recreation and sport	470	1.8	2.0	2.8	1.9
F11.521 Technical Occupations in Libraries, Archives, Museums and Art Galleries	28	1.2	1.5	0.9	1.4
F111.5211 Library and Archive Technicians and Assistants	21	1.1	1.0	1.2	1.1
F112.5212 Technical Occupations Related to Museums and Art Galleries	-	-	-	-	-
F12.522 Photographers, Graphic Arts Technicians & Technical & coordinating Occupations in Motion Pictures, Broadcasting & Performing Arts	86	1.8	2.2	2.3	2.0
F121.5221 Photographers	33	2.0	2.3	2.8	2.2
F122.5222 Film and Video Camera Operators	-	-	-	-	-
F123.5223 Graphic Arts Technicians	-	-	-	-	-
F124.5224 Broadcast Technicians	-	-	-	-	-
F125.5225 Audio and Video Recording Technicians	-	-	-	-	-
F126.5226 Other Technical and Co-ordinating Occupations in Motion Pictures, Broadcasting and the Performing Arts	13	1.7	1.9	2.2	1.8
F127.5227 Support Occupations in Motion Pictures, Broadcasting and the Performing Arts	14	1.7	2.1	1.7	1.9
F13.523 Announcers and Other Performers	19	3.0	3.5	5.1	3.4
F131.5231 Announcers and Other Broadcasters	13	2.9	3.5	4.7	3.3
F132.5232 Other Performers	-	-	-	-	-
F14.524 Creative Designers and Craftspersons	204	1.9	2.2	3.3	2.1

Rockies College Region

Projected Annual Growth Rates in Occupational Demand

	Estimated Employment	Average Annual % Change			Avg Annual % Chg Over 4 Years
	<u>2005</u>	<u>2007/2005</u>	<u>2009/2007</u>	<u>2010/2009</u>	<u>2009/2005</u>
F141.5241 Graphic Designers and Illustrators	93	2.0	2.3	3.0	2.2
F142.5242 Interior Designers	36	2.1	2.9	1.9	2.6
F143.5243 Theatre, Fashion, Exhibit and Other Creative Designers	20	1.9	2.1	3.4	2.0
F144.5244 Artisans and Craftspersons	53	1.6	1.7	4.9	1.6
F145.5245 Patternmakers - Textile, Leather and Fur Products	-	-	-	-	-
F15.525 Athletes, Coaches, Referees and Related Occupations	133	1.5	1.6	2.4	1.5
F151.5251 Athletes	-	-	-	-	-
F152.5252 Coaches	18	0.7	0.4	0.8	0.5
F153.5253 Sports Officials and Referees	-	-	-	-	-
F154.5254 Program Leaders and Instructors in Recreation and Sport	102	1.6	1.7	2.7	1.7
G Sales and service occupations	9,161	3.4	3.7	7.5	3.7
G0 Sales and service supervisors	278	3.9	4.2	8.3	4.2
G01.621 Sales and Service Supervisors	278	3.9	4.2	8.3	4.2
G011.6211 Retail Trade Supervisors	117	2.0	1.3	5.8	1.6
G012.6212 Food Service Supervisors	114	5.8	6.8	10.7	6.7
G013.6213 Executive Housekeepers	14	5.6	6.6	10.4	6.5
G014.6214 Dry Cleaning and Laundry Supervisors	-	-	-	-	-
G015.6215 Cleaning Supervisors	-	-	-	-	-
G016.6216 Other Service Supervisors	20	4.1	5.0	7.1	4.7
G1 Wholesale, technical, insurance, real estate sales specialists and retail, wholesale and grain buyers	542	2.1	2.4	5.1	2.3
G11.641 Sales Representatives, Wholesale Trade	257	2.2	2.9	5.4	2.6
G111.6411 Sales Representatives - Wholesale Trade (Non-Technical)	258	2.2	2.9	5.4	2.6
G12.622 Technical Sales Specialists, Wholesale Trade	82	2.0	2.9	4.5	2.5
G121.6221 Technical Sales Specialists - Wholesale Trade	82	2.0	2.9	4.5	2.5
G13.623 Insurance and Real Estate Sales Occupations and Buyers	202	2.0	1.4	4.9	1.7
G131.6231 Insurance Agents and Brokers	145	1.9	1.1	5.2	1.5
G132.6232 Real Estate Agents and Salespersons	-	-	-	-	-
G133.6233 Retail and Wholesale Buyers	47	2.0	1.7	5.5	1.9
G134.6234 Grain Elevator Operators	-	-	-	-	-

Rockies College Region

Projected Annual Growth Rates in Occupational Demand

	Estimated Employment	Average Annual % Change			Avg Annual % Chg Over 4 Years
	<u>2005</u>	<u>2007/2005</u>	<u>2009/2007</u>	<u>2010/2009</u>	<u>2009/2005</u>
G2 Retail salespersons and sales clerks	1,501	1.9	1.2	5.7	1.6
G21.642 Retail Salespersons and Sales Clerks	1,501	1.9	1.2	5.7	1.6
G211.6421 Retail Salespersons and Sales Clerks	1,501	1.9	1.2	5.7	1.6
G3 Cashiers	697	2.5	2.1	6.8	2.3
G31.661 Cashiers	698	2.5	2.1	6.8	2.3
G311.6611 Cashiers	698	2.5	2.1	6.8	2.3
G4 Chefs and cooks	826	5.8	6.8	10.8	6.7
G41.624 Chefs and Cooks	826	5.8	6.8	10.8	6.7
G411.6241 Chefs	155	5.8	6.9	10.9	6.8
G412.6242 Cooks	674	5.8	6.8	10.7	6.7
G5 Occupations in food and beverage service	1,062	6.1	7.2	11.3	7.1
G51.645 Occupations in Food and Beverage Service	1,062	6.1	7.2	11.3	7.1
G511.6451 Maîtres d'hôtel and Hosts/Hostesses	94	6.0	7.1	11.1	6.9
G512.6452 Bartenders	143	5.8	6.9	11.0	6.7
G513.6453 Food and Beverage Servers	825	6.1	7.3	11.3	7.1
G6 Occupations in protective services	329	1.0	1.1	1.7	1.1
G61.626 Police Officers and Fire-fighters	144	0.6	0.7	0.6	0.7
G611.6261 Police Officers (Except Commissioned)	96	0.6	0.7	0.6	0.7
G612.6262 Fire-fighters	50	0.6	0.7	0.8	0.7
G62.646 Other Occupations in Protective Service	126	0.9	0.9	1.4	0.9
G621.6461 Sheriffs and Bailiffs	-	-	-	-	-
G622.6462 Correctional Service Officers	38	0.7	0.8	0.6	0.7
G623.6463 By-law Enforcement and Other Regulatory Officers n.e.c.	15	1.1	1.1	2.5	1.1
G624.6464 Other Ranks Armed Forces	44	0.6	0.6	0.6	0.6
G625.6465 Other Protective Service Occupations	20	1.5	1.3	3.7	1.4
G63.665 Security Guards and Related Occupations	59	2.3	2.5	4.9	2.4
G631.6651 Security Guards and Related Occupations	59	2.3	2.5	4.9	2.4
G7 Occupations in travel and accommodation including attendants in recreation and sport	286	4.3	5.0	7.1	4.9
G71.643 Occupations in Travel and Accommodation	199	4.7	5.4	7.7	5.3

Rockies College Region

Projected Annual Growth Rates in Occupational Demand

	Estimated Employment	Average Annual % Change			Avg Annual % Chg Over 4 Years
	<u>2005</u>	<u>2007/2005</u>	<u>2009/2007</u>	<u>2010/2009</u>	<u>2009/2005</u>
G711.6431 Travel Counsellors	-	-	-	-	-
G712.6432 Purser and Flight Attendants	43	3.0	3.1	2.8	3.1
G713.6433 Airline Sales and Service Agents	35	2.9	3.0	2.7	3.1
G714.6434 Ticket Agents, Cargo Service Representatives and Related Clerks (Except Airline)	-	-	-	-	-
G715.6435 Hotel Front Desk Clerks	105	6.2	7.4	11.5	7.3
G72.644 Tour and Recreational Guides and Casino Occupations	39	2.9	3.4	4.5	3.3
G721.6441 Tour and Travel Guides	-	-	-	-	-
G722.6442 Outdoor Sport and Recreational Guides	13	4.0	4.6	6.9	4.4
G723.6443 Casino Occupations	15	2.0	2.2	2.0	2.1
G73.667 Other Occupations in Travel, Accommodation, Amusement and Recreation	47	3.9	4.5	6.6	4.4
G731.6671 Operators and Attendants in Amusement, Recreation and Sport	22	2.4	2.8	3.8	2.7
G732.6672 Other Attendants in Accommodation and Travel	25	5.2	6.0	8.9	5.9
G8 Childcare and home support workers	727	1.7	1.6	3.4	1.7
G81.647 Childcare and Home Support Workers	727	1.7	1.6	3.4	1.7
G811.6471 Visiting Homemakers, Housekeepers & Related Occupations	266	2.8	2.9	4.6	2.9
G812.6472 Elementary and Secondary School Teacher Assistants	202	0.1	-0.3	-0.3	-0.1
G814.6474 Babysitters, Nannies and Parents' Helpers	261	1.7	1.7	4.9	1.7
G9 Sales and service occupations n.e.c.	2,912	3.6	4.0	7.8	3.9
G91.627 Technical Occupations in Personal Service	223	0.9	1.0	5.2	1.0
G911.6271 Hairstylists and Barbers	214	0.9	1.0	5.2	1.0
G912.6272 Funeral Directors and Embalmers	-	-	-	-	-
G92.648 Other Occupations in Personal Service	117	1.1	1.2	5.2	1.2
G921.6481 Image, Social and Other Personal Consultants	-	-	-	-	-
G922.6482 Estheticians, Electrologists and Related Occupations	68	1.1	1.1	5.4	1.1
G923.6483 Pet Groomers and Animal Care Workers	36	1.1	1.2	5.0	1.2
G924.6484 Other Personal Service Occupations	-	-	-	-	-
G93.666 Cleaners	687	3.3	4.0	6.3	3.8

Rockies College Region

Projected Annual Growth Rates in Occupational Demand

	Estimated Employment	Average Annual % Change			Avg Annual % Chg Over 4 Years
	<u>2005</u>	<u>2007/2005</u>	<u>2009/2007</u>	<u>2010/2009</u>	<u>2009/2005</u>
G931.6661 Light Duty Cleaners	316	4.8	5.7	9.0	5.5
G932.6662 Specialized Cleaners	68	1.6	1.9	3.7	1.8
G933.6663 Janitors, Caretakers and Building Superintendents	302	2.2	2.6	3.8	2.4
G94.625 Butchers and Bakers	184	2.8	2.2	6.0	2.6
G941.6251 Butchers and Meat Cutters - Retail and Wholesale	66	1.9	1.1	5.9	1.5
G942.6252 Bakers	117	3.4	2.8	6.0	3.2
G96.664 Food Counter Attendants, Kitchen Helpers and Related Occupations	1,022	5.8	6.8	10.8	6.7
G961.6641 Food Counter Attendants, Kitchen Helpers and Related Occupations	1,022	5.8	6.8	10.8	6.7
G97.662 Other Sales and Related Occupations	571	1.9	1.1	5.8	1.5
G971.6621 Service Station Attendants	90	1.8	1.0	5.9	1.4
G972.6622 Grocery Clerks and Store Shelf Stockers	356	1.8	0.9	5.9	1.4
G973.6623 Other Elemental Sales Occupations	124	2.1	1.6	5.6	1.9
G98.668 Other Elemental Service Occupations	111	2.1	2.4	6.0	2.3
G981.6681 Dry Cleaning and Laundry Occupations	56	2.3	2.7	6.1	2.6
G982.6682 Ironing, Pressing and Finishing Occupations	11	1.2	1.5	5.5	1.4
G983.6683 Other Elemental Service Occupations	45	2.1	2.4	5.8	2.3
H Trades, transport and equipment operators and related occupations	7,162	2.0	4.0	-0.9	3.1
H0 Contractors and supervisors in trades and transportation	408	2.4	5.4	-3.1	4.0
H01.721 Contractors and Supervisors, Trades and Related Workers	372	2.3	5.6	-3.6	4.1
H011.7211 Supervisors, Machinists and Related Occupations	-	-	-	-	-
H012.7212 Contractors and Supervisors, Electrical Trades and Telecommunications Occupations	43	2.0	5.1	-3.4	3.7
H013.7213 Contractors and Supervisors, Pipefitting Trades	21	2.6	6.0	-4.6	4.5
H014.7214 Contractors and Supervisors, Metal Forming, Shaping and Erecting Trades	19	2.1	4.7	-1.7	3.5
H015.7215 Contractors and Supervisors, Carpentry Trades	58	2.5	6.8	-5.5	4.8
H016.7216 Contractors and Supervisors, Mechanic Trades	44	1.6	2.2	2.3	1.9

Rockies College Region

Projected Annual Growth Rates in Occupational Demand

	Estimated Employment	Average Annual % Change			Avg Annual % Chg Over 4 Years
	<u>2005</u>	<u>2007/2005</u>	<u>2009/2007</u>	<u>2010/2009</u>	<u>2009/2005</u>
H017.7217 Contractors and Supervisors, Heavy Construction					
Equipment Crews	95	2.5	5.9	-4.1	4.3
H018.7218 Supervisors, Printing and Related Occupations	-	-	-	-	-
H019.7219 Contractors and Supervisors, Other Construction Trades,					
Installers, Repairers and Servicers	82	2.5	7.0	-5.8	4.9
H02.722 Supervisors, Railway and Motor Transportation Occupations	34	3.1	2.8	2.3	3.0
H021.7221 Supervisors, Railway Transport Operations	22	3.7	3.1	2.5	3.5
H022.7222 Supervisors, Motor Transport & Other Ground Transit					
Operators	13	2.0	2.4	2.2	2.2
H1 Construction trades	1,647	2.5	6.7	-5.4	4.8
H11.725 Plumbers, Pipefitters and Gas Fitters	254	2.5	6.2	-4.7	4.5
H111.7251 Plumbers	154	2.5	6.9	-5.5	4.9
H112.7252 Steamfitters, Pipefitters and Sprinkler System Installers	76	2.3	4.7	-3.2	3.6
H113.7253 Gas Fitters	26	2.2	5.5	-3.6	4.0
H12.727 Carpenters and Cabinetmakers	684	2.4	6.6	-5.2	4.7
H121.7271 Carpenters	643	2.5	6.8	-5.5	4.8
H122.7272 Cabinetmakers	41	1.8	4.3	0.5	3.1
H13.728 Masonry and Plastering Trades	262	2.6	7.3	-6.2	5.2
H131.7281 Bricklayers	43	2.6	7.3	-6.1	5.1
H132.7282 Concrete Finishers	42	2.5	7.1	-5.9	5.0
H133.7283 Tilers	36	2.6	7.4	-6.3	5.2
H134.7284 Plasterers, Drywall Installers and Finishers and Lathers	142	2.6	7.4	-6.3	5.2
H14.729 Other Construction Trades	445	2.5	6.9	-5.6	4.9
H141.7291 Roofers and Shinglers	89	2.6	7.3	-6.1	5.1
H142.7292 Glaziers	39	2.2	5.5	-3.1	4.0
H143.7293 Insulators	30	2.5	6.6	-5.4	4.7
H144.7294 Painters and Decorators	215	2.6	7.0	-5.7	4.9
H145.7295 Floor Covering Installers	75	2.6	7.0	-5.6	5.0
H2 Stationary engineers, power station operators and electrical trades and					
telecommunications occupations	521	2.0	4.4	-2.2	3.3

Rockies College Region

Projected Annual Growth Rates in Occupational Demand

	Estimated Employment	Average Annual % Change			Avg Annual % Chg Over 4 Years
	<u>2005</u>	<u>2007/2005</u>	<u>2009/2007</u>	<u>2010/2009</u>	<u>2009/2005</u>
H21.724 Electrical Trades and Telecommunications Occupations	478	2.0	4.6	-2.6	3.4
H211.7241 Electricians (Except Industrial and Power System)	247	2.4	6.4	-4.9	4.5
H212.7242 Industrial Electricians	140	1.4	2.2	0.6	1.8
H213.7243 Power System Electricians	-	-	-	-	-
H214.7244 Electrical Power Line and Cable Workers	21	1.9	3.5	-0.8	2.8
H215.7245 Telecommunications Line and Cable Workers	20	2.1	4.2	-1.8	3.3
H216.7246 Telecommunications Installation and Repair Workers	31	2.0	2.9	1.3	2.5
H217.7247 Cable Television Service and Maintenance Technicians	-	-	-	-	-
H22.735 Stationary Engineers and Power Station and System Operators	42	2.2	2.0	2.7	2.1
H221.7351 Stationary Engineers and Auxiliary Equipment Operators	35	2.1	1.9	2.5	2.0
H222.7352 Power Systems and Power Station Operators	-	-	-	-	-
H3 Machinists, metal forming, shaping and erecting occupations	409	1.6	3.2	0.3	2.5
H31.723 Machinists and Related Occupations	57	1.3	1.7	4.5	1.5
H311.7231 Machinists and Machining and Tooling Inspectors	51	1.3	1.7	4.4	1.5
H312.7232 Tool and Die Makers	-	-	-	-	-
H32.726 Metal Forming, Shaping and Erecting Trades	354	1.7	3.4	-0.3	2.6
H321.7261 Sheet Metal Workers	50	2.3	6.2	-3.9	4.4
H322.7262 Boilermakers	-	-	-	-	-
H323.7263 Structural Metal and Platework Fabricators and Fitters	28	1.2	2.1	3.6	1.7
H324.7264 Ironworkers	34	2.3	6.2	-4.4	4.4
H325.7266 Blacksmiths and Die Setters	-	-	-	-	-
H326.7265 Welders and Related Machine Operators	233	1.5	2.5	0.7	2.0
H4 Mechanics	1,105	1.4	1.7	2.9	1.6
H41.731 Machinery and Transportation Equipment Mechanics (Except Motor Vehicle)	653	1.5	2.0	1.5	1.7
H411.7311 Construction Millwrights and Industrial Mechanics (Except Textile)	243	1.1	1.4	2.3	1.3
H412.7312 Heavy-Duty Equipment Mechanics	277	1.2	1.4	1.7	1.3
H413.7313 Refrigeration and Air Conditioning Mechanics	38	2.2	5.6	-3.4	4.0
H414.7314 Railway Carmen/women	31	3.7	3.1	2.5	3.5

Rockies College Region

Projected Annual Growth Rates in Occupational Demand

	Estimated Employment	Average Annual % Change			Avg Annual % Chg Over 4 Years
	<u>2005</u>	<u>2007/2005</u>	<u>2009/2007</u>	<u>2010/2009</u>	<u>2009/2005</u>
H415.7315 Aircraft Mechanics and Aircraft Inspectors	37	2.6	2.7	2.8	2.7
H416.7316 Machine Fitters	-	-	-	-	-
H417.7317 Textile Machinery Mechanics and Repairers	0	-	-	-	-
H418.7318 Elevator Constructors and Mechanics	18	2.6	7.3	-6.1	5.1
H42.732 Automotive service technicians	391	1.2	1.2	4.9	1.2
H421.7321 Automotive Service Technicians, Truck Mechanics and Mechanical Repairers	296	1.3	1.2	4.8	1.3
H422.7322 Motor Vehicle Body Repairers	95	1.0	1.1	5.3	1.1
H43.733 Other Mechanics	61	1.8	2.1	4.0	2.0
H431.7331 Oil and Solid Fuel Heating Mechanics	-	-	-	-	-
H432.7332 Electric Appliance Servicers and Repairers	27	1.6	2.0	4.5	1.8
H433.7333 Electrical Mechanics	-	-	-	-	-
H434.7334 Motorcycle and Other Related Mechanics	-	-	-	-	-
H435.7335 Other Small Engine and Equipment Mechanics	13	1.6	1.9	5.6	1.8
H5 Other trades n.e.c.	305	1.7	2.9	2.0	2.4
H51.734 Upholsterers, Tailors, Shoe Repairers, Jewellers and Related Occupations	66	1.3	1.5	5.6	1.4
H511.7341 Upholsterers	13	1.1	1.3	5.3	1.2
H512.7342 Tailors, Dressmakers, Furriers and Milliners	40	1.3	1.6	5.6	1.5
H513.7343 Shoe Repairers and Shoemakers	-	-	-	-	-
H514.7344 Jewellers, Watch Repairers and Related Occupations	-	-	-	-	-
H52.738 Printing Press Operators, Commercial Divers and Other Trades and Related Occupations n.e.c.	67	0.9	1.5	4.4	1.3
H521.7381 Printing Press Operators	20	1.4	2.0	5.0	1.7
H522.7382 Commercial Divers	-	-	-	-	-
H523.7383 Other Trades and Related Occupations	45	0.7	1.3	4.2	1.0
H53.744 Other installers, repairers and servicers	172	2.1	4.0	-0.2	3.1
H531.7441 Residential and Commercial Installers and Servicers	83	2.5	6.6	-4.7	4.7
H532.7442 Waterworks and Gas Maintenance Workers	11	2.1	2.5	0.4	2.4
H533.7443 Automotive Mechanical Installers and Servicers	34	1.5	1.2	5.0	1.4

Rockies College Region

Projected Annual Growth Rates in Occupational Demand

	Estimated Employment	Average Annual % Change			Avg Annual % Chg Over 4 Years
	<u>2005</u>	<u>2007/2005</u>	<u>2009/2007</u>	<u>2010/2009</u>	<u>2009/2005</u>
H534.7444 Pest Controllers and Fumigators	-	-	-	-	-
H535.7445 Other Repairers and Servicers	39	1.8	1.8	5.3	1.9
H6 Heavy equipment and crane operators including drillers	592	1.6	3.3	-1.5	2.5
H61.742 Heavy Equipment Operators	502	1.6	3.2	-1.5	2.5
H611.7421 Heavy Equipment Operators (Except Crane)	483	1.6	3.2	-1.5	2.5
H612.7422 Public Works Maintenance Equipment Operators	18	2.0	3.7	-0.9	2.9
H62.737 Crane Operators, Drillers and Blasters	89	1.7	3.4	-1.6	2.6
H621.7371 Crane Operators	36	2.0	4.5	-2.2	3.4
H622.7372 Drillers and Blasters - Surface Mining Quarrying and Construction	50	1.3	2.2	-0.6	1.8
H623.7373 Water Well Drillers	-	-	-	-	-
H7 Transportation equipment operators and related workers, excluding labourers	1,326	2.0	2.5	2.4	2.3
H71.741 Motor Vehicle and Transit Drivers	1,145	1.8	2.4	2.4	2.2
H711.7411 Truck Drivers	828	1.5	2.1	1.5	1.8
H712.7412 Bus Drivers and Subway and Other Transit Operators	95	2.3	2.4	2.3	2.4
H713.7413 Taxi and Limousine Drivers and Chauffeurs	50	2.8	2.9	2.5	3.0
H714.7414 Delivery and Courier Service Drivers	171	3.1	3.7	6.3	3.5
H72.736 Train Crew Operating Occupations	94	3.6	3.0	2.4	3.4
H721.7361 Railway and Yard Locomotive Engineers	47	3.7	3.1	2.4	3.5
H722.7362 Railway Conductors and Brakemen/women	47	3.6	3.0	2.5	3.4
H73.743 Other Transport Equipment Operators and Related Workers	88	3.0	2.7	2.3	3.0
H731.7431 Railway Yard Workers	-	-	-	-	-
H732.7432 Railway Track Maintenance Workers	30	3.6	3.1	2.4	3.5
H733.7433 Deck Crew Water Transport	11	1.9	1.7	2.1	1.8
H734.7434 Engine Room Crew, Water Transport	-	-	-	-	-
H735.7435 Lock and Cable Ferry Operators and Related Occupations	-	-	-	-	-
H736.7436 Boat Operators	-	-	-	-	-
H737.7437 Air Transport Ramp Attendants	21	3.4	2.8	2.6	3.2

Rockies College Region

Projected Annual Growth Rates in Occupational Demand

	Estimated Employment	Average Annual % Change			Avg Annual % Chg Over 4 Years
	<u>2005</u>	<u>2007/2005</u>	<u>2009/2007</u>	<u>2010/2009</u>	<u>2009/2005</u>
H8 Trades helpers, construction and transportation labourers and related occupations	848	2.1	4.2	-0.9	3.2
H81.745 Longshore Workers and Material Handlers	386	1.7	1.9	3.8	1.8
H811.7451 Longshore Workers	37	2.7	2.5	2.8	2.7
H812.7452 Material Handlers	350	1.6	1.9	3.9	1.7
H82.761 Trades Helpers and Labourers	415	2.4	6.4	-4.9	4.6
H821.7611 Construction Trades Helpers and Labourers	392	2.5	6.6	-5.3	4.7
H822.7612 Other Trades Helpers and Labourers	24	1.6	2.8	1.1	2.2
H83.762 Public Works and Other Labourers n.e.c.	49	2.1	3.2	0.2	2.7
H831.7621 Public Works and Maintenance Labourers	30	1.7	3.3	-0.8	2.6
H832.7622 Railway and Motor Transport Labourers	19	2.8	3.1	2.1	3.1
I Occupations unique to primary industry	1,810	1.2	0.5	2.1	0.9
I0 Occupations unique to agriculture, excluding labourers	631	1.0	0.5	4.1	0.8
I01.825 Contractors, Operators and Supervisors in Agriculture, Horticulture and Aquaculture	348	1.0	0.6	4.0	0.8
I011.8251 Farmers and Farm Managers	265	0.9	0.4	4.4	0.7
I012.8252 Agricultural and Related Service Contractors and Managers	-	-	-	-	-
I013.8253 Farm Supervisors and Specialized Livestock Workers	20	1.0	0.7	3.8	0.8
I014.8254 Nursery and Greenhouse Operators and Managers	22	1.1	0.4	3.7	0.8
I015.8255 Landscaping & Grounds Maintenance Contractors & Managers	-	-	-	-	-
I016.8256 Supervisors, Landscape and Horticulture	13	1.4	1.6	2.6	1.6
I017.8257 Aquaculture Operators and Managers	11	0.9	0.5	3.8	0.7
I02.843 Agriculture and Horticulture Workers	286	1.0	0.5	4.2	0.7
I021.8431 General Farm Workers	193	0.9	0.5	4.3	0.7
I022.8432 Nursery and Greenhouse Workers	94	1.1	0.5	4.1	0.8
I1 Occupations unique to forestry operations, mining, oil and gas extraction and fishing excluding labourers	742	1.3	0.4	0.7	0.8
I11.821 Supervisors, Logging and Forestry	61	1.5	0.1	0.7	0.8
I111.8211 Supervisors, Logging and Forestry	60	1.5	0.1	0.6	0.8
I12.822 Supervisors, Mining, Oil and Gas	147	1.0	0.7	1.4	0.8

Rockies College Region

Projected Annual Growth Rates in Occupational Demand

	Estimated Employment	Average Annual % Change			Avg Annual % Chg Over 4 Years
	<u>2005</u>	<u>2007/2005</u>	<u>2009/2007</u>	<u>2010/2009</u>	<u>2009/2005</u>
I121.8221 Supervisors, Mining and Quarrying	102	0.7	0.5	1.9	0.6
I122.8222 Supervisors, Oil and Gas Drilling and Service	45	1.6	1.1	0.3	1.4
I13.823 Underground Miners, Oil and Gas Drillers and Related Workers	166	0.9	0.6	1.6	0.8
I131.8231 Underground Production and Development Miners	130	0.7	0.5	1.8	0.6
I132.8232 Oil and Gas Well Drillers, Servicers, Testers and Related Workers	38	1.7	1.0	0.7	1.3
I14.841 Mine Service Workers and Operators in Oil and Gas Drilling	83	1.4	1.0	0.8	1.2
I141.8411 Underground Mine Service and Support Workers	41	0.8	0.7	1.7	0.7
I142.8412 Oil and Gas Well Drilling Workers and Services Operators	42	2.1	1.3	0.0	1.7
I15.824 Logging Machinery Operators	111	1.5	0.1	0.2	0.8
I151.8241 Logging Machinery Operators	110	1.5	0.1	0.2	0.8
I16.842 Logging and Forestry Workers	174	1.7	-0.1	-0.5	0.8
I161.8421 Chain-saw and Skidder Operators	114	1.7	-0.2	-0.5	0.8
I162.8422 Silviculture and Forestry Workers	58	1.6	-0.1	-0.4	0.8
I17.826 Fishing Vessel Masters and Skippers and Fishermen/women	-	-	-	-	-
I171.8261 Fishing Masters and Officers	0	-	-	-	-
I172.8262 Fishing Vessel Skippers and Fishermen/women	-	-	-	-	-
I18.844 Other Fishing and Trapping Occupations	-	-	-	-	-
I181.8441 Fishing Vessel Deckhands	0	-	-	-	-
I182.8442 Trappers and Hunters	0	-	-	-	-
I2 Primary production labourers	436	1.4	0.8	1.4	1.1
I21.861 Primary Production Labourers	436	1.4	0.8	1.4	1.1
I211.8611 Harvesting Labourers	30	0.9	0.4	4.2	0.6
I212.8612 Landscaping and Grounds Maintenance Labourers	82	2.0	2.8	3.1	2.4
I213.8613 Aquaculture and Marine Harvest Labourers	13	0.9	0.6	4.3	0.8
I214.8614 Mine Labourers	69	0.7	0.6	1.8	0.7
I215.8615 Oil and Gas Drilling, Servicing and Related Labourers	75	1.5	1.1	0.5	1.3
I216.8616 Logging and Forestry Labourers	165	1.6	-0.1	0.1	0.7
J Occupations unique to processing, manufacturing and utilities	1,726	1.3	1.4	3.8	1.4
J0 Supervisors in manufacturing	150	1.6	1.4	3.3	1.6

Rockies College Region

Projected Annual Growth Rates in Occupational Demand

	Estimated Employment	Average Annual % Change			Avg Annual % Chg Over 4 Years
	<u>2005</u>	<u>2007/2005</u>	<u>2009/2007</u>	<u>2010/2009</u>	<u>2009/2005</u>
J01.921 Supervisors, Processing Occupations	127	1.7	1.3	3.2	1.5
J011.9211 Supervisors, Mineral and Metal Processing	12	1.1	1.9	1.6	1.5
J012.9212 Supervisors, Petroleum, Gas and Chemical Processing and Utilities	17	5.6	1.4	0.0	3.6
J013.9213 Supervisors, Food, Beverage and Tobacco Processing	12	3.2	2.0	2.5	2.7
J014.9214 Supervisors, Plastic and Rubber Products Manufacturing	-	-	-	-	-
J015.9215 Supervisors, Forest Products Processing	83	0.8	0.9	4.2	0.9
J016.9216 Supervisors, Textile Processing	-	-	-	-	-
J02.922 Supervisors, Assembly and Fabrication	23	1.4	2.3	4.2	1.9
J021.9221 Supervisors, Motor Vehicle Assembling	-	-	-	-	-
J022.9222 Supervisors, Electronics Manufacturing	-	-	-	-	-
J023.9223 Supervisors, Electrical Products Manufacturing	-	-	-	-	-
J024.9224 Supervisors, Furniture and Fixtures Manufacturing	-	-	-	-	-
J025.9225 Supervisors, Fabric, Fur and Leather Products Manufacturing	-	-	-	-	-
J026.9226 Supervisors, Other Mechanical and Metal Products Manufacturing	-	-	-	-	-
J027.9227 Supervisors, Other Products Manufacturing and Assembly	-	-	-	-	-
J1 Machine operators in manufacturing	781	1.4	1.3	3.6	1.3
J11.923 Central Control and Process Operators in Manufacturing and Processing	67	4.2	1.6	-0.4	3.0
J111.9231 Central Control & Process Operators Mineral & Metal Processing	15	0.9	1.0	1.3	1.0
J112.9232 Petroleum, Gas and Chemical Process Operators	30	7.3	2.1	-1.9	4.9
J113.9233 Pulping Control Operators	-	-	-	-	-
J114.9234 Papermaking and Coating Control Operators	13	2.2	1.2	0.8	1.7
J12.941 Machine Operators and Related Workers in Metal and Mineral Products Processing	78	1.0	1.5	1.7	1.3
J121.9411 Machine Operators, Mineral and Metal Processing	42	0.8	0.8	1.7	0.8
J122.9412 Foundry Workers	-	-	-	-	-

Rockies College Region

Projected Annual Growth Rates in Occupational Demand

	Estimated Employment	Average Annual % Change			Avg Annual % Chg Over 4 Years
	<u>2005</u>	<u>2007/2005</u>	<u>2009/2007</u>	<u>2010/2009</u>	<u>2009/2005</u>
J123.9413 Glass Forming and Finishing Machine Operators and Glass Cutters	-	-	-	-	-
J124.9414 Concrete, Clay and Stone Forming Operators	23	1.4	2.8	0.6	2.1
J125.9415 Inspectors and Testers, Mineral and Metal Processing	-	-	-	-	-
J13.942 Machine Operators and Related Workers in Chemical, Plastic and Rubber Processing	22	1.5	1.6	2.3	1.6
J131.9421 Chemical Plant Machine Operators	-	-	-	-	-
J132.9422 Plastics Processing Machine Operators	-	-	-	-	-
J133.9423 Rubber Processing Machine Operators and Related Workers	-	-	-	-	-
J134.9424 Water and Waste Plant Operators	12	1.3	1.4	1.8	1.4
J14.943 Machine Operators and Related Workers in Pulp and Paper Production and Wood Processing	401	0.7	0.9	4.4	0.8
J141.9431 Sawmill Machine Operators	195	0.4	0.9	5.0	0.6
J142.9432 Pulp Mill Machine Operators	26	2.1	1.2	0.7	1.7
J143.9433 Papermaking and Finishing Machine Operators	15	2.1	1.4	0.9	1.8
J144.9434 Other Wood Processing Machine Operators	46	0.6	1.1	4.2	0.9
J145.9435 Paper Converting Machine Operators	11	2.1	1.3	1.3	1.7
J146.9436 Lumber Graders and Other Wood Processing Inspectors and Graders	108	0.5	0.8	4.9	0.7
J15.944 Machine Operators and Related Workers in Textile Processing	-	-	-	-	-
J151.9441 Textile Fibre and Yarn Preparation Machine Operators	-	-	-	-	-
J152.9442 Weavers, Knitters and Other Fabric-Making Occupations	-	-	-	-	-
J153.9443 Textile Dyeing and Finishing Machine Operators	-	-	-	-	-
J154.9444 Textile Inspectors, Graders and Samplers	-	-	-	-	-
J16.945 Machine Operators and Related Workers in Fabric, Fur and Leather Products Manufacturing	47	1.3	1.8	5.9	1.6
J161.9451 Sewing Machine Operators	42	1.3	1.9	5.9	1.6
J162.9452 Fabric, Fur and Leather Cutters	-	-	-	-	-
J163.9453 Hide and Pelt Processing Workers	0	-	-	-	-

Rockies College Region

Projected Annual Growth Rates in Occupational Demand

	Estimated Employment	Average Annual % Change			Avg Annual % Chg Over 4 Years
	<u>2005</u>	<u>2007/2005</u>	<u>2009/2007</u>	<u>2010/2009</u>	<u>2009/2005</u>
J164.9454 Inspectors and Testers, Fabric, Fur and Leather Products Manufacturing	-	-	-	-	-
J17.946 Machine Operators and Related Workers in Food, Beverage and Tobacco Processing	56	3.4	2.0	2.2	2.8
J171.9461 Process Control and Machine Operators, Food and Beverage Processing	30	3.4	2.0	2.2	2.8
J172.9462 Industrial Butchers and Meat Cutters, Poultry Preparers and Related Workers	16	3.5	1.9	1.5	2.8
J173.9463 Fish Plant Workers	-	-	-	-	-
J174.9464 Tobacco Processing Machine Operators	0	-	-	-	-
J175.9465 Testers and Graders, Food and Beverage Processing	-	-	-	-	-
J18.947 Printing Machine Operators and Related Occupations	58	1.3	1.4	5.2	1.4
J181.9471 Printing Machine Operators	13	1.4	1.8	5.3	1.6
J182.9472 Camera, Platemaking and Other Pre-Press Occupations	-	-	-	-	-
J183.9473 Binding and Finishing Machine Operators	-	-	-	-	-
J184.9474 Photographic and Film Processors	34	1.3	1.1	5.2	1.2
J19.951 Machining, Metalworking, Woodworking and Related Machine Operators	43	1.1	1.9	4.5	1.5
J191.9511 Machining Tool Operators	-	-	-	-	-
J192.9512 Forging Machine Operators	-	-	-	-	-
J193.9513 Woodworking Machine Operators	23	0.8	1.7	4.4	1.3
J194.9514 Metalworking Machine Operators	-	-	-	-	-
J196.9516 Other Metal Products Machine Operators.	-	-	-	-	-
J197.9517 Other Products Machine Operators	-	-	-	-	-
J2 Assemblers in manufacturing	187	1.4	2.3	3.9	1.9
J21.948 Mechanical, Electrical and Electronics Assemblers	58	1.5	2.1	4.7	1.8
J211.9481 Aircraft Assemblers and Aircraft Assembly Inspectors	-	-	-	-	-
J212.9482 Motor Vehicle Assemblers, Inspectors and Testers	-	-	-	-	-
J213.9483 Electronics Assemblers, Fabricators, Inspectors and Testers	15	1.3	2.1	5.8	1.7

Rockies College Region

Projected Annual Growth Rates in Occupational Demand

	Estimated Employment	Average Annual % Change			Avg Annual % Chg Over 4 Years
	<u>2005</u>	<u>2007/2005</u>	<u>2009/2007</u>	<u>2010/2009</u>	<u>2009/2005</u>
J214.9484 Assemblers and Inspectors, Electrical Appliance, Apparatus and Equipment Manufacturing	-	-	-	-	-
J215.9485 Assemblers, Fabricators and Inspectors, Industrial Electrical Motors and Transformers	-	-	-	-	-
J216.9486 Mechanical Assemblers and Inspectors	13	1.5	2.2	4.0	1.9
J217.9487 Machine Operators and Inspectors, Electrical Apparatus Manufacturing	-	-	-	-	-
J22.949 Other Assembly and Related Occupations	129	1.5	2.5	3.6	2.0
J221.9491 Boat Assemblers and Inspectors	14	1.3	2.1	5.6	1.8
J222.9492 Furniture and Fixture Assemblers and Inspectors	34	1.5	2.4	4.4	2.0
J223.9493 Other Wood Products Assemblers and Inspectors	31	1.3	2.1	2.8	1.7
J224.9494 Furniture Finishers and Refinishers	11	1.2	2.1	4.1	1.7
J225.9495 Plastic Products Assemblers, Finishers and Inspectors	-	-	-	-	-
J226.9496 Painters and Coaters - Industrial	25	1.7	3.7	0.5	2.8
J227.9497 Plating, Metal Spraying and Related Operators	-	-	-	-	-
J228.9498 Other Assemblers and Inspectors	-	-	-	-	-
J3 Labourers in processing, manufacturing and utilities	609	1.2	1.3	4.2	1.2
J31.961 Labourers in Processing, Manufacturing and Utilities	609	1.2	1.3	4.1	1.2
J311.9611 Labourers in Mineral and Metal Processing	22	0.9	1.4	1.9	1.2
J312.9612 Labourers in Metal Fabrication	15	1.5	2.9	3.4	2.2
J313.9613 Labourers in Chemical Products Processing and Utilities	-	-	-	-	-
J314.9614 Labourers in Wood Pulp and Paper Processing	423	0.6	0.9	4.6	0.8
J315.9615 Labourers in Rubber and Plastic Products Manufacturing	-	-	-	-	-
J316.9616 Labourers in Textile Processing	-	-	-	-	-
J317.9617 Labourers in Food Beverage and Tobacco Processing	86	3.1	2.0	2.8	2.6
J318.9618 Labourers in Fish Processing	-	-	-	-	-
J319.9619 Other Labourers in Processing, Manufacturing and Utilities	46	1.6	2.3	5.0	2.0

- suppressed due to small numbers