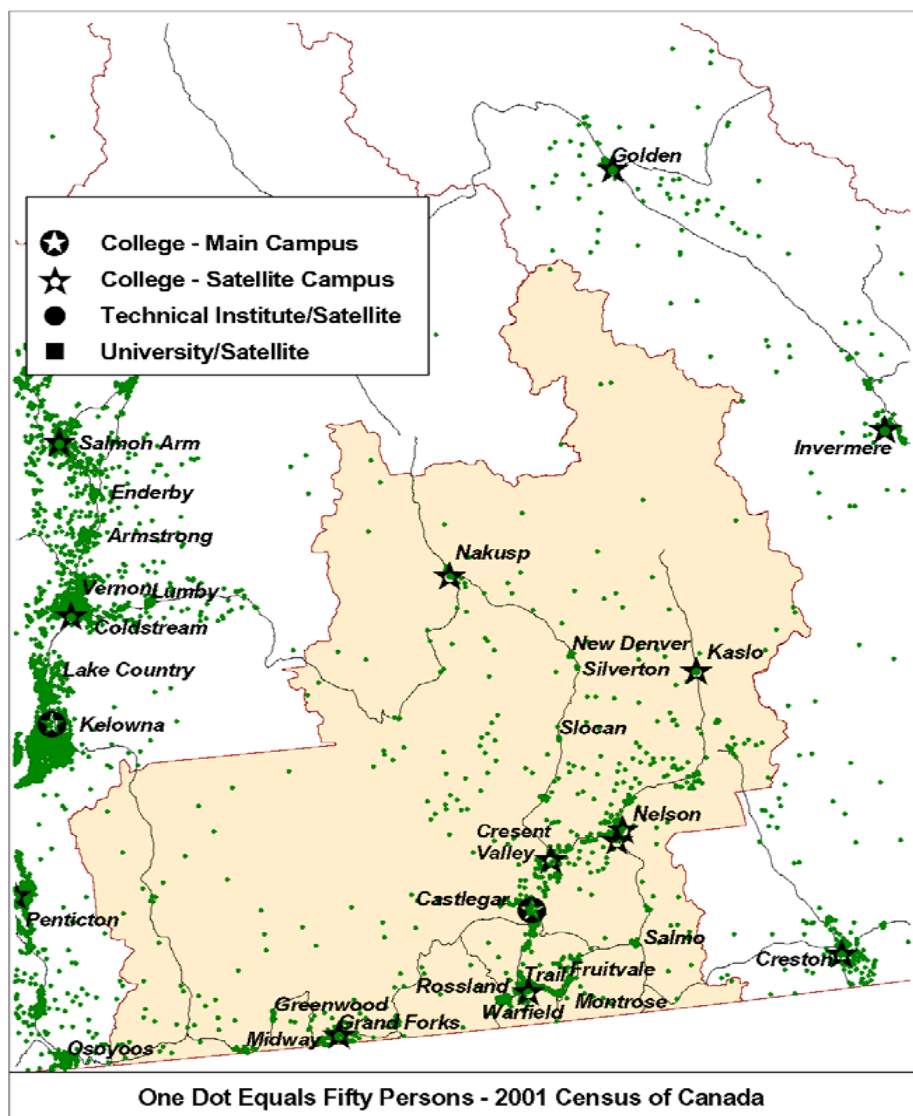


INDUSTRY AND OCCUPATION PROJECTIONS: 2006 -- 2010

SELKIRK COLLEGE REGION



Background Information on Geographic Location of Population

| Major Cities | Population <u>2005</u> | % of <u>Region</u> | Land <u>Area</u> <i>Sq Km</i> | Population <u>Density</u> <i>Persons per Sq Km</i> |
|-----------------------------------|---------------------------|-----------------------|-------------------------------------|--|
| Nelson | 9,797 | 12.2 | 7.3 | 1347.6 |
| Trail | 7,889 | 9.8 | 34.8 | 226.8 |
| Castlegar | 7,821 | 9.7 | 18.0 | 434.5 |
| Grand Forks | 4,200 | 5.2 | 10.4 | 402.3 |
| Rossland | 3,725 | 4.6 | 49.2 | 75.7 |
| Fruitvale | 2,083 | 2.6 | 2.7 | 783.1 |
| Nakusp | 1,779 | 2.2 | 7.4 | 239.8 |
| Warfield | 1,751 | 2.2 | 1.9 | 921.6 |
| Salmo | 1,133 | 1.4 | 2.4 | 476.1 |
| Montrose | 1,086 | 1.4 | 1.5 | 714.5 |
| Kaslo | 1,075 | 1.3 | 2.8 | 383.9 |
| Greenwood | 668 | 0.8 | 2.5 | 264.0 |
| Midway | 630 | 0.8 | 12.2 | 51.8 |
| New Denver | 549 | 0.7 | 1.1 | 513.1 |
| Slocan | 357 | 0.4 | 0.8 | 476.0 |
| Silverton | 230 | 0.3 | 0.4 | 522.7 |
| Rest of Region | 35,626 | 44.3 | 27359.1 | 1.3 |
| Total Region | 80,399 | 100.0 | 27514.4 | 2.9 |
| Region as % of BC | 1.9 | | 3.0 | |
| Youth Age 15-29 | 11,967 | | | |
| Youth in Region as % of BC | 2.0 | | | |

Note to Users

All assumptions relating to employment are based on past conditions, modified wherever possible to take into consideration future changes. Consequently, the resulting employment projections are not necessarily what will be, but rather what could be, given the realization of these conditions. It is certainly possible that unforeseen changes in factors such as economic development, government policy, land use and zoning will affect future employment. Consequently, the projections should only be regarded as one possible scenario on the future size and distribution of the workforce.

Regional Employment Projection Model (REPM)

BC STATS is grateful for the support and financial assistance from the Ministry of Advanced Education in developing the model.

Contents

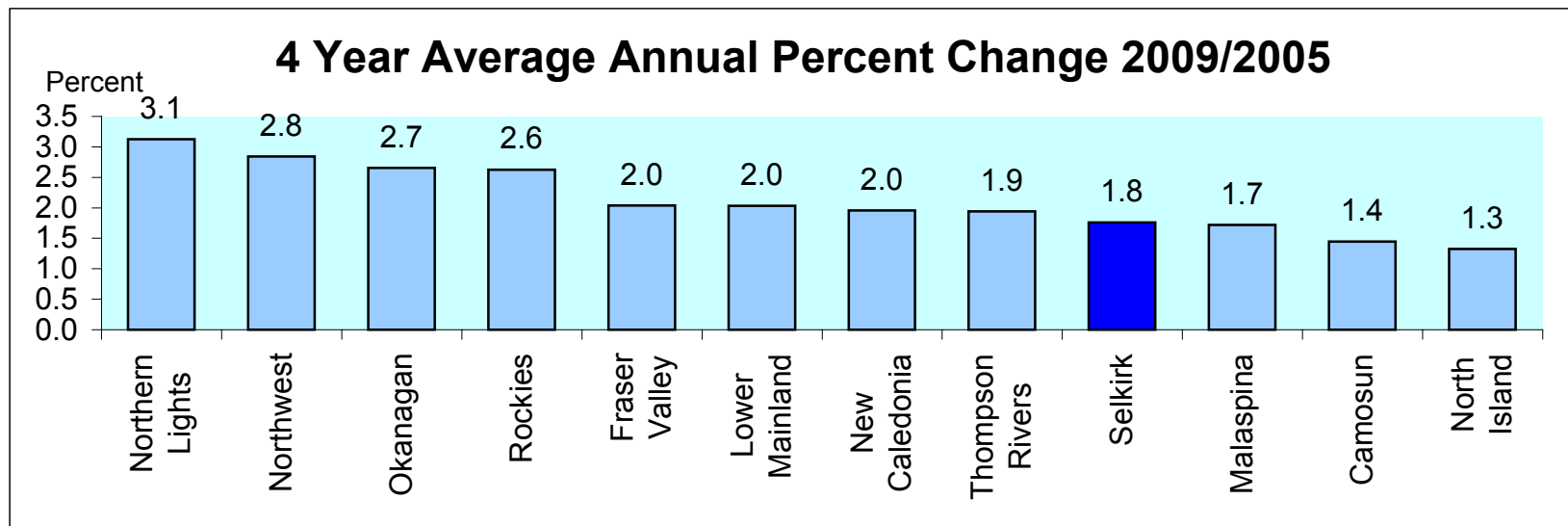
1. Projected Annual Growth in Employment Demand by College Region
2. Industrial Structure in the College Region Compared with BC, 2005 and 2009
3. Projected Annual Growth in Employment Demand by Industry
4. Occupational Structure in the College Region Compared with BC, 2005 and 2009
5. Projected Annual Growth Rates in Occupational Demand (1-digit)
6. Projected Annual Growth Rates in Occupational Demand (2-digits)

Appendices

1. Methodology
2. COPS Industry Conversion to REPM
3. Regional District to College Region Conversion for REPM
4. Projected Annual Growth Rates in Occupational Demand (3-digit)
5. Projected Annual Growth Rates in Occupational Demand (4-digit)

Projected Annual Growth in Employment Demand by College Region

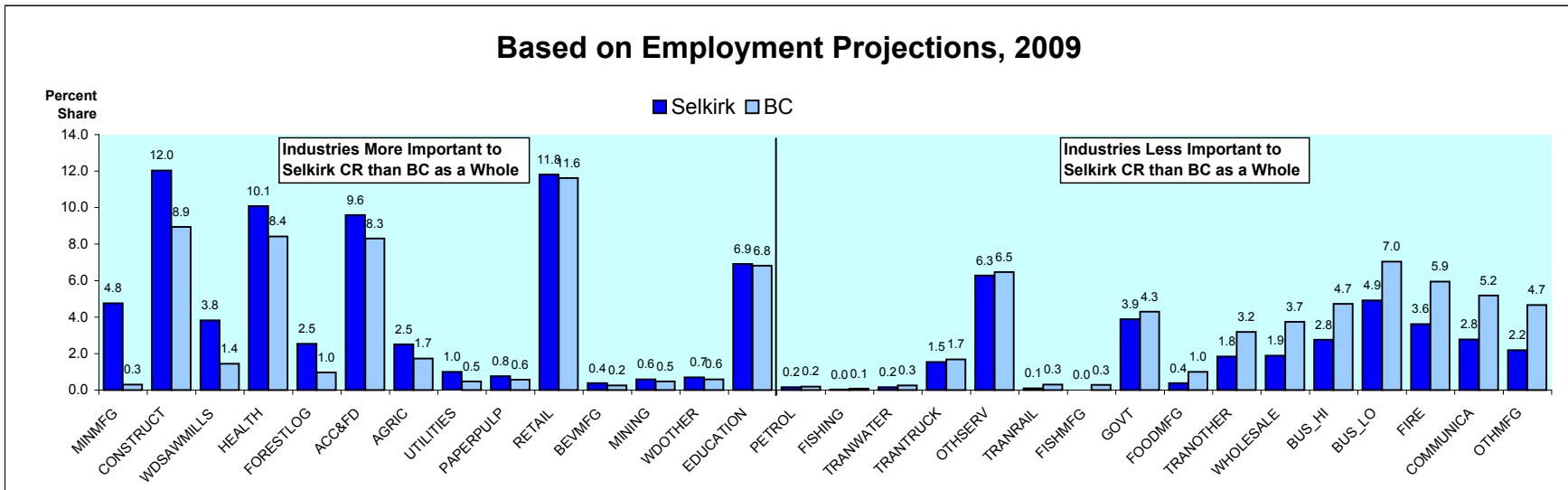
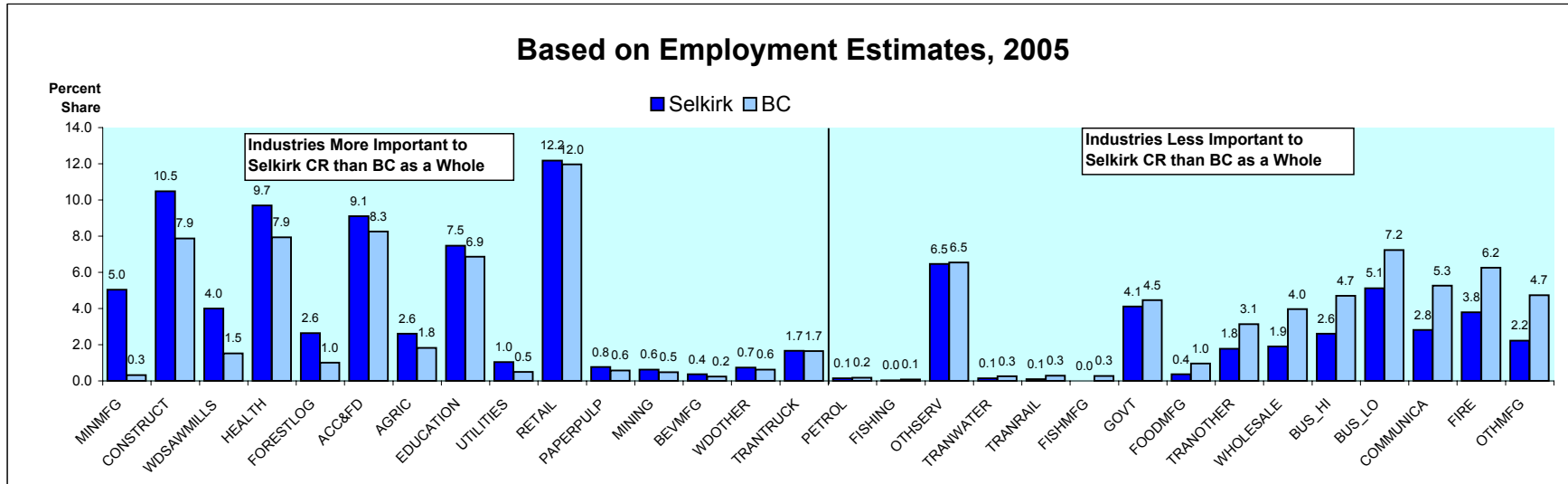
| | Estimated Employment | Projected Employment Levels | | Average Annual % Chg | | | Avg Annual % Chg Over 4 Years |
|-----------------|----------------------|-----------------------------|------------------|----------------------|------------|------------|-------------------------------|
| | 2005 | 2009 | 2010 | 2007/2005 | 2009/2007 | 2010/2009 | 2009/2005 |
| | | | | | | | |
| Northern Lights | 34,708 | 39,046 | 39,220 | 3.1 | 2.9 | 0.4 | 3.1 |
| Northwest | 34,597 | 38,531 | 39,845 | 2.3 | 3.2 | 3.4 | 2.8 |
| Okanagan | 175,281 | 193,888 | 201,600 | 2.3 | 2.9 | 4.0 | 2.7 |
| Rockies | 37,929 | 41,910 | 43,335 | 2.3 | 2.8 | 3.4 | 2.6 |
| Fraser Valley | 120,271 | 130,067 | 133,725 | 1.8 | 2.2 | 2.8 | 2.0 |
| Lower Mainland | 1,182,258 | 1,278,495 | 1,327,306 | 2.1 | 1.9 | 3.8 | 2.0 |
| New Caledonia | 75,311 | 81,207 | 83,482 | 1.8 | 2.0 | 2.8 | 2.0 |
| Thompson Rivers | 85,651 | 92,310 | 94,914 | 1.8 | 2.0 | 2.8 | 1.9 |
| Selkirk | 36,829 | 39,421 | 40,304 | 1.5 | 2.0 | 2.2 | 1.8 |
| Malaspina | 109,580 | 117,129 | 120,067 | 1.4 | 2.0 | 2.5 | 1.7 |
| Camosun | 167,460 | 177,149 | 181,894 | 1.3 | 1.6 | 2.7 | 1.4 |
| North Island | 70,227 | 73,956 | 75,509 | 1.2 | 1.4 | 2.1 | 1.3 |
| Total | 2,130,101 | 2,303,108 | 2,381,200 | 2.0 | 2.0 | 3.4 | 2.0 |



Industrial Structure in the Selkirk College Region Compared with BC

Percent Share of Employment by Industry

Ranked by the Percentage Point Difference in the Industry Share in the College Region Compared with BC



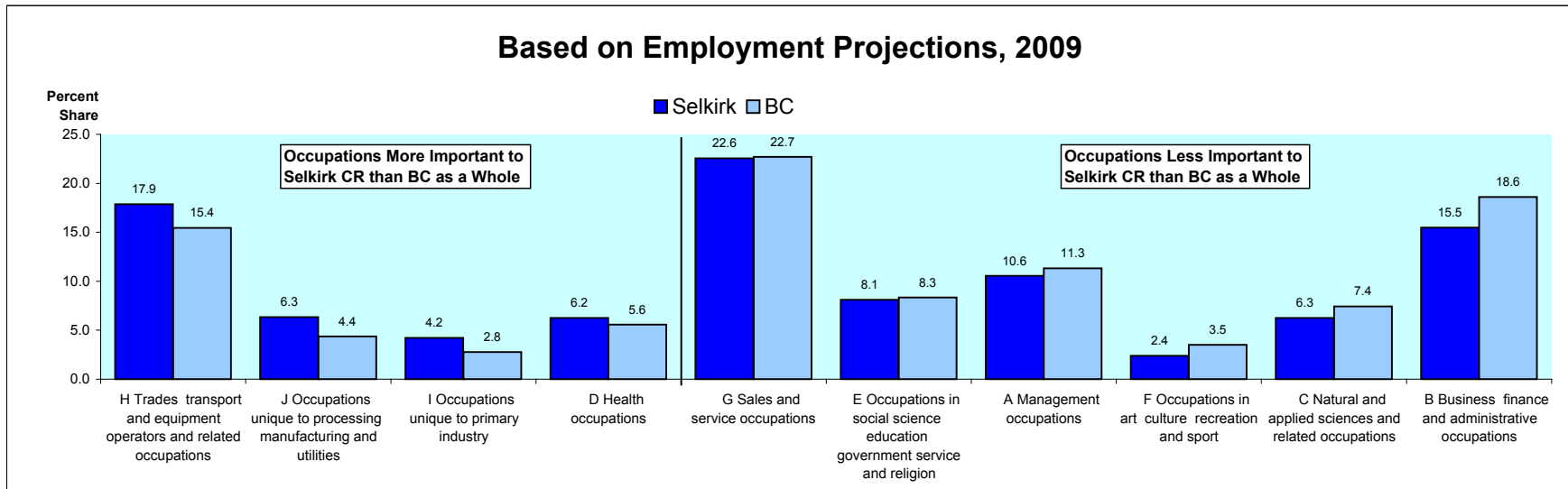
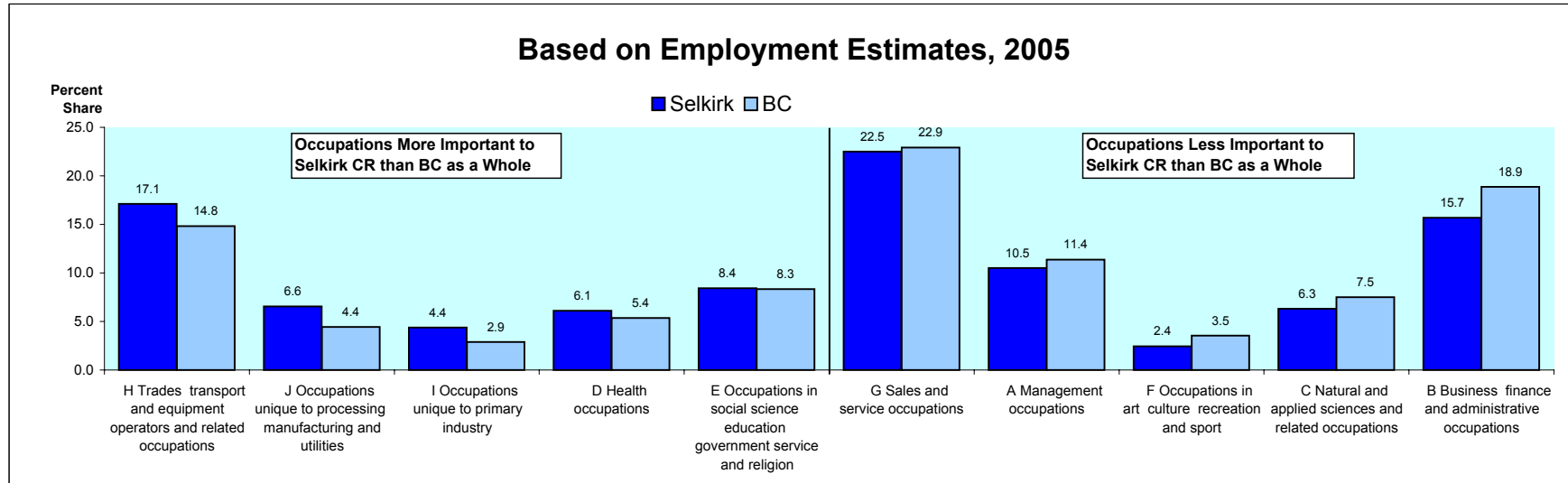
Selkirk College Region

| | Estimated | Projected | | Average Annual % Chg | | | Avg Annual % Chg |
|-----------------------|---------------|-------------------|---------------|----------------------|------------------|------------------|------------------|
| | Employment | Employment Levels | | | | | Over 4 Years |
| | <u>2005</u> | <u>2009</u> | <u>2010</u> | <u>2007/2005</u> | <u>2009/2007</u> | <u>2010/2009</u> | <u>2009/2005</u> |
| ACC&FD | 3,354 | 3,782 | 4,056 | 2.6 | 3.6 | 7.2 | 3.2 |
| AGRIC | 961 | 986 | 1,029 | 0.9 | 0.4 | 4.4 | 0.6 |
| BEVMFG | 135 | 151 | 153 | 4.0 | 1.7 | 1.0 | 2.9 |
| BUS_HI | 963 | 1,090 | 1,129 | 2.4 | 4.0 | 3.6 | 3.3 |
| BUS_LO | 1,886 | 1,935 | 1,972 | 0.6 | 0.7 | 1.9 | 0.6 |
| COMMUNICA | 1,037 | 1,096 | 1,106 | 1.4 | 1.3 | 0.9 | 1.4 |
| CONSTRUCT | 3,861 | 4,743 | 4,466 | 3.0 | 8.0 | -5.8 | 5.7 |
| EDUCATION | 2,752 | 2,723 | 2,701 | 0.1 | -0.6 | -0.8 | -0.3 |
| FIRE | 1,394 | 1,428 | 1,489 | 1.0 | 0.2 | 4.3 | 0.6 |
| FISHING | - | - | - | - | - | - | - |
| FISHMFG | 0 | 0 | 0 | | | | |
| FOODMFG | 138 | 150 | 152 | 2.7 | 1.7 | 0.8 | 2.3 |
| FORESTLOG | 972 | 999 | 990 | 1.8 | -0.4 | -0.9 | 0.7 |
| GOVT | 1,516 | 1,532 | 1,537 | 0.2 | 0.3 | 0.3 | 0.3 |
| HEALTH | 3,570 | 3,973 | 4,105 | 2.7 | 2.8 | 3.3 | 2.8 |
| MINING | 227 | 232 | 237 | 0.7 | 0.5 | 1.9 | 0.6 |
| MINMFG | 1,854 | 1,877 | 1,879 | 0.5 | 0.1 | 0.2 | 0.3 |
| OTHMFG | 817 | 861 | 928 | 0.9 | 1.8 | 7.7 | 1.4 |
| OTHSERV | 2,378 | 2,476 | 2,592 | 1.0 | 1.0 | 4.7 | 1.0 |
| PAPERPULP | 283 | 303 | 304 | 2.2 | 1.2 | 0.5 | 1.8 |
| PETROL | 53 | 64 | 60 | 6.1 | 3.9 | -6.3 | 5.2 |
| PETROLMFG | 0 | 0 | 0 | - | - | - | - |
| RETAIL | 4,484 | 4,656 | 4,898 | 1.3 | 0.6 | 5.2 | 1.0 |
| TRANOTHER | 652 | 726 | 740 | 2.8 | 2.6 | 2.0 | 2.8 |
| TRANRAIL | 34 | 40 | 41 | 5.3 | 2.8 | 2.3 | 4.2 |
| TRANTRUCK | 615 | 606 | 612 | -1.7 | 0.9 | 1.1 | -0.4 |
| TRANWATER | 53 | 63 | 65 | 5.9 | 3.4 | 2.6 | 4.9 |
| UTILITIES | 384 | 394 | 399 | 0.9 | 0.4 | 1.1 | 0.6 |
| WDOTHER | 270 | 276 | 291 | 0.4 | 0.8 | 5.2 | 0.6 |
| WDSAWMILLS | 1,471 | 1,506 | 1,585 | 0.4 | 0.8 | 5.2 | 0.6 |
| WHOLESALE | 703 | 743 | 778 | 0.6 | 2.2 | 4.7 | 1.4 |
| ALL INDUSTRIES | 36,829 | 39,421 | 40,304 | 1.5 | 2.0 | 2.2 | 1.8 |

Occupational Structure in the Selkirk College Region Compared with BC

Percent Share of Employment by Occupation

Ranked by the Percentage Point Difference in the Occupation Share in the College Region Compared with BC



Selkirk College Region

Projected Annual Growth Rates in Occupational Demand

| | Estimated Employment | Average Annual % Change | | | Avg Annual % Chg Over 4 Years |
|--|-------------------------|-------------------------|------------------|------------------|----------------------------------|
| | <u>2005</u> | <u>2007/2005</u> | <u>2009/2007</u> | <u>2010/2009</u> | <u>2009/2005</u> |
| All occupations | 36,829 | 1.5 | 2.0 | 2.2 | 1.8 |
| A Management occupations | 3,867 | 1.6 | 2.2 | 2.6 | 1.9 |
| B Business finance and administrative occupations | 5,778 | 1.3 | 1.5 | 2.3 | 1.4 |
| C Natural and applied sciences and related occupations | 2,326 | 1.3 | 1.7 | 1.5 | 1.5 |
| D Health occupations | 2,251 | 2.3 | 2.3 | 3.6 | 2.3 |
| E Occupations in social science education government service and religion | 3,100 | 0.9 | 0.6 | 1.2 | 0.8 |
| F Occupations in art culture recreation and sport | 897 | 1.1 | 1.2 | 1.7 | 1.1 |
| G Sales and service occupations | 8,291 | 1.7 | 1.8 | 4.9 | 1.8 |
| H Trades transport and equipment operators and related occupations | 6,302 | 1.7 | 4.0 | -1.3 | 2.9 |
| I Occupations unique to primary industry | 1,606 | 1.2 | 0.4 | 2.4 | 0.8 |
| J Occupations unique to processing manufacturing and utilities | 2,413 | 0.8 | 1.0 | 3.0 | 0.9 |

Projected Annual Growth Rates in Occupational Demand (2-digits)

Selkirk College Region

Projected Annual Growth Rates in Occupational Demand

| | Estimated Employment | Average Annual % Change | | | Avg Annual % Chg Over 4 Years |
|--|-------------------------|-------------------------|------------------|------------------|----------------------------------|
| | <u>2005</u> | <u>2007/2005</u> | <u>2009/2007</u> | <u>2010/2009</u> | <u>2009/2005</u> |
| All occupations | 36,829 | 1.5 | 2.0 | 2.2 | 1.8 |
| A2 Managers in retail trade food and accommodation services | 428 | 1.3 | 2.0 | 1.7 | 1.6 |
| A3 Other managers n.e.c. | 736 | 1.2 | 1.6 | 2.5 | 1.4 |
| B0 Professional occupations in business and finance | 1,413 | 1.8 | 1.8 | 5.7 | 1.9 |
| B1 Finance and insurance administration occupations | 1,293 | 1.6 | 3.1 | -0.5 | 2.4 |
| B2 Secretaries | 940 | 1.1 | 1.2 | 2.6 | 1.2 |
| B3 Administrative and regulatory occupations | 549 | 1.3 | 1.9 | 2.0 | 1.6 |
| B4 Clerical supervisors | 782 | 1.4 | 1.9 | 1.5 | 1.7 |
| B5 Clerical occupations | 611 | 1.3 | 1.9 | 1.7 | 1.6 |
| C0 Professional occupations in natural and applied sciences | 118 | 1.1 | 1.1 | 2.6 | 1.1 |
| C1 Technical occupations related to natural and applied sciences | 2,780 | 1.3 | 1.4 | 2.5 | 1.3 |
| D0 Professional occupations in health | 1,264 | 1.2 | 1.6 | 1.8 | 1.4 |
| D1 Nurse supervisors and registered nurses | 1,062 | 1.4 | 1.8 | 1.2 | 1.6 |
| D2 Technical and related occupations in health | 516 | 2.2 | 2.2 | 3.6 | 2.3 |
| D3 Assisting occupations in support of health services | 605 | 2.4 | 2.4 | 3.5 | 2.5 |
| E0 Judges, lawyers, psychologists, social workers, ministers of religion & policy/program officers | 557 | 2.2 | 2.2 | 3.5 | 2.3 |
| E1 Teachers and professors | 573 | 2.3 | 2.3 | 3.7 | 2.4 |
| E2 Paralegals, social services workers & occup. in educ. & religion n.e.c. | 775 | 1.4 | 1.6 | 2.6 | 1.5 |
| F0 Professional occupations in art and culture | 1,471 | 0.1 | -0.6 | -0.7 | -0.2 |
| F1 Technical occupations in art, culture, recreation and sport | 856 | 1.8 | 1.7 | 2.7 | 1.8 |
| G0 Sales and service supervisors | 372 | 1.0 | 0.9 | 1.1 | 0.9 |
| G1 Wholesale, technical, insurance, real estate sales specialists & retail, wholesale and grain buyers | 522 | 1.2 | 1.4 | 2.1 | 1.3 |
| G2 Retail salespersons and sales clerks | 248 | 1.9 | 2.0 | 5.4 | 2.0 |
| G3 Cashiers | 498 | 1.1 | 1.4 | 3.5 | 1.3 |
| G4 Chefs and cooks | 1,430 | 1.4 | 0.8 | 4.9 | 1.1 |
| G5 Occupations in food and beverage service | 651 | 1.5 | 1.0 | 5.3 | 1.3 |

Selkirk College Region

Projected Annual Growth Rates in Occupational Demand

| | Estimated Employment | Average Annual % Change | | | Avg Annual % Chg Over 4 Years |
|---|-------------------------|-------------------------|------------------|------------------|----------------------------------|
| | <u>2005</u> | <u>2007/2005</u> | <u>2009/2007</u> | <u>2010/2009</u> | <u>2009/2005</u> |
| G6 Occupations in protective services | 655 | 2.5 | 3.4 | 6.6 | 3.0 |
| G7 Occup. in travel & accommodation incl. attendants in recreation & sport | 825 | 2.5 | 3.5 | 7.0 | 3.1 |
| G8 Childcare and home support workers | 349 | 0.5 | 0.6 | 1.0 | 0.5 |
| G9 Sales and service occupations n.e.c. | 253 | 2.3 | 2.7 | 4.1 | 2.6 |
| H0 Contractors and supervisors in trades and transportation | 782 | 1.4 | 1.2 | 2.6 | 1.3 |
| H1 Construction trades | 2,597 | 1.8 | 2.0 | 5.1 | 1.9 |
| H2 Stationary engineers, power stn operators & electrical trades & telecom. | 360 | 2.3 | 5.6 | -3.2 | 4.1 |
| H3 Machinists, metal forming, shaping and erecting occupations | 1,564 | 2.7 | 7.0 | -4.7 | 5.0 |
| H4 Mechanics | 524 | 1.9 | 4.1 | -2.0 | 3.1 |
| H5 Other trades n.e.c. | 468 | 1.3 | 2.6 | 0.4 | 2.0 |
| H6 Heavy equipment and crane operators including drillers | 916 | 1.2 | 1.6 | 2.4 | 1.4 |
| H7 Transport equipment operators & related workers, excl. labourers | 306 | 1.5 | 2.7 | 1.9 | 2.1 |
| H8 Trades helpers, construction and transport labourers & related | 385 | 2.0 | 4.5 | -2.8 | 3.3 |
| I0 Occupations unique to agriculture, excluding labourers | 969 | 0.5 | 1.7 | 1.4 | 1.2 |
| I1 Occup. unique to forestry ops, mining, oil & gas extraction, fishing excl. labourers | 808 | 1.8 | 4.0 | -1.0 | 3.0 |
| I2 Primary production labourers | 836 | 0.9 | 0.5 | 4.1 | 0.7 |
| J0 Supervisors in manufacturing | 424 | 1.6 | 0.2 | 0.1 | 0.9 |
| J1 Machine operators in manufacturing | 348 | 1.4 | 0.6 | 1.2 | 1.0 |
| J2 Assemblers in manufacturing | 237 | 0.8 | 0.9 | 2.4 | 0.8 |
| J3 Labourers in processing, manufacturing and utilities | 1,113 | 0.8 | 0.9 | 2.8 | 0.9 |

Appendix 1

Summary of Methodology for the British Columbia Regional Employment Projection Model (REPM)

The methodology used in the model has come largely from previous work on community dependencies carried out earlier by BC STATS. The fundamental premise is that the economy of a region can be represented by income flows that can be classified as “basic” (or driver) and “non-basic” (or support) depending on the source of the income.

The model calculates indirect employment effects from employment changes in the basic sectors using multipliers based in inter-industry linkages from the British Columbia Input-Output Model. Similarly, non-basic, or induced effects are calculated using an income-to-non-basic-jobs ratio.

The current version of the model is benchmarked to the 2001 Census employment by Regional District, and is projected forward up to the most up-to-date annual employment data from the Labour Force Survey. The growth rates from the Labour Force Survey (LFS) at the provincial level for the basic industries are used to project growth down to the Regional District level. The model then calculates the indirect jobs based on the Regional District specific multipliers. The direct and indirect employment levels are then used to calculate the wages and salaries earned in the basic industries which in turn are converted to employment in the non-basic industries through the income to support-industry job multipliers. As well, transfer payments and investment income are also converted to employment in the non-basic industries using the same multipliers. The output from the model is then benchmarked to the LFS industry numbers at the BC level as well as to the LFS regional employment numbers for the Development Regions and the Capital and Greater Vancouver Regional Districts. In the current version of the model, the employment numbers are reconciled up to the 2005 annual averages from the LFS.

Once the model is brought up to the most current employment levels, then the forecast is carried out for five to ten years further. The industrial employment projections from the Canadian Occupational Projection System (COPS) are now used as the source data for the industrial growth, both in determining the growth rates in the direct employment and then as a benchmark on which to reconcile the industrial employment generated by the model.

While the total employment is forced to the COPS employment levels, there is leeway to adjust growth rates by industry across the sub-provincial regions. There are some standard variables that are used to differentiate the outlook for

the regions. For example, the growth in the education sector is dictated by the projected K-12 and post-secondary population growth in the relevant age groups. Government Services is projected in line with the total population projections for the Regional Districts. Employment in the Health Sector is so often governed by the growth in the senior's population as are the transfer payments flowing in. (CPP and OAS is a large component of transfer payments). As well, pensions from private pension plans are considered investment income meaning seniors receive a high proportion of the total investment income in a region.

An important determining factor of growth by region is the major projects coming on stream in the outlook timeframe. Firstly they impact construction employment and secondly many will impact specific industries once they move into the production phase. In BC, we are dealing with the preparations for the 2010 Winter Games so many of the construction occupations will be in short supply.

The intent is to update the REPM annually, based on another year of LFS data plus a new COPS forecast. Currently, there is a demand for economic forecasts by occupation at the college region level. College Regions are aggregations of sub-sets of Regional Districts. Occupational forecasts are being produced at the college region level. In the appendix there is a conversion table which outlines which Regional District belongs to which College Region.

The model is only as good as the input data assumptions. Our reliance on good quality data from COPS is very important. Users of the data who perceive any problems with the assumptions in the model or question the quality of any of the data series being used should contact BC STATS at bcstats@gov.bc.ca.

May 2, 2006

Appendix 2

COPS INDUSTRY CONVERSION TO REPM

| REPM INDUSTRY | COPS INDUSTRY | % of COPS INDUSTRY |
|------------------|--|-----------------------|
| ACC&FD | 31 Accommodation and food services | 100 |
| AGRIC | 1 Agriculture | 100 |
| BEVMFG | 9 Food and Beverage Products | 16 |
| BUS_HI | 25 Computer System Design Services | 100 |
| BUS_HI | 24 Professional Business Services | 50 |
| BUS_HI | 26 Other Professional Services | 50 |
| BUS_LO | 27 Management, Administrative and Other Support | 100 |
| BUS_LO | 24 Professional Business Services | 50 |
| BUS_LO | 26 Other Professional Services | 50 |
| COMMUNICA | 30 Information, culture and recreation | 100 |
| CONSTRUCT | 8 Construction | 100 |
| EDUCATION | 28 Educational Services | 100 |
| FIRE | 23 Finance, Insurance, Real Estate and Leasing | 100 |
| FISHING | 3 Fishing, Hunting and Trapping | 100 |
| FISHMFG | 9 Food and Beverage Products | 18 |
| FOODMFG | 9 Food and Beverage Products | 66 |
| FORESTLOG | 2 Forestry and Logging with support activities | 100 |
| GOVT | 33 Public administration | 100 |
| HEALTH | 29 Health Care and Social Assistance | 75 |
| MINING | 5 Mining (except Oil and Gas) | 100 |
| MINING | 6 Support Activities for Mining and Oil and Gas Extraction | 67 |
| MINMFG | 14 Manufactured Mineral Products | 50 |
| OTHMFG | 12 Printing and Related Support Activities | 100 |
| OTHMFG | 13 Rubber, Plastics and Chemicals | 100 |
| OTHMFG | 14 Manufactured Mineral Products | 50 |
| OTHMFG | 15 Metal Fabrication and Machinery (excluding electrical) | 100 |
| OTHMFG | 16 Computer, Electronic and Electrical Products | 100 |
| OTHMFG | 17 Motor Vehicle, Body, Trailer & Parts Manufacturing | 100 |
| OTHMFG | 18 Other Transportation Equipment Manufacturing | 100 |
| OTHSERV | 29 Health Care and Social Assistance | 25 |
| OTHSERV | 32 Other services | 100 |

COPS INDUSTRY CONVERSION TO REPM

| REPM INDUSTRY | COPS INDUSTRY | % of COPS INDUSTRY |
|------------------|--|-----------------------|
| PAPERPULP | 11 Paper Manufacturing | 100 |
| PETROL | 4 Oil and Gas Extraction | 100 |
| PETROL | 6 Support Activities for Mining and Oil and Gas Extraction | 33 |
| PETROLMFG | 19 Other Manufacturing | 7 |
| RETAIL | 21 Retail Trade | 100 |
| TRANOTHER | 22 Transportation and Warehousing | 59 |
| TRANRAIL | 22 Transportation and Warehousing | 5 |
| TRANTRUCK | 22 Transportation and Warehousing | 31 |
| TRANWATER | 22 Transportation and Warehousing | 5 |
| UTILITIES | 7 Utilities | 100 |
| WDOTHER | 10 Wood Product Manufacturing | 29 |
| WDSAWMILLS | 10 Wood Product Manufacturing | 71 |
| WHOLESALE | 20 Wholesale Trade | 100 |

Appendix 3

REGIONAL DISTRICT TO COLLEGE REGION CONVERSION FOR REPM

| COLLEGE REGION | REGIONAL DISTRICT # | REGIONAL DISTRICT NAME | % of REGIONAL DISTRICT |
|-----------------|---------------------|------------------------|------------------------|
| CAMOSUN | 17 | Capital | 100 |
| FRASER VALLEY | 9 | Fraser Valley | 100 |
| LOWER MAINLAND | 15 | Greater Vancouver | 100 |
| LOWER MAINLAND | 29 | Sunshine Coast | 100 |
| LOWER MAINLAND | 31 | Squamish Lillooet | 87 |
| MALASPINA | 19 | Cowichan Valley | 100 |
| MALASPINA | 21 | Nanaimo | 100 |
| MALASPINA | 27 | Powell River | 100 |
| NEW CALEDONIA | 41 | Cariboo | 37 |
| NEW CALEDONIA | 51 | Bulkley Nechako | 61 |
| NEW CALEDONIA | 53 | Fraser-Fort George | 100 |
| NORTH ISLAND | 23 | Alberni-Clayoquot | 100 |
| NORTH ISLAND | 25 | Comox Strathcona | 100 |
| NORTH ISLAND | 43 | Mount Waddington | 100 |
| NORTH ISLAND | 45 | Central Coast | 100 |
| NORTHERN LIGHTS | 49 | Kitimat Stikine | 2 |
| NORTHERN LIGHTS | 55 | Peace River | 100 |
| NORTHERN LIGHTS | 57 | Stikine | 100 |
| NORTHERN LIGHTS | 59 | Northern Rockies | 100 |
| NORTHWEST | 47 | Skeena-Queen Charlotte | 100 |
| NORTHWEST | 49 | Kitimat Stikine | 98 |
| NORTHWEST | 51 | Bulkley Nechako | 39 |
| OKANAGAN | 7 | Okanagan-Similkameen | 100 |
| OKANAGAN | 35 | Central Okanagan | 100 |
| OKANAGAN | 37 | North Okanagan | 100 |
| OKANAGAN | 39 | Columbia Shushwap | 85 |
| ROCKIES | 1 | East Kootenay | 100 |
| ROCKIES | 3 | Central Kootenays | 20 |
| ROCKIES | 39 | Columbia Shushwap | 15 |
| SELKIRK | 3 | Central Kootenays | 80 |
| SELKIRK | 5 | Kootenay Boundary | 100 |
| THOMPSON RIVERS | 31 | Squamish Lillooet | 13 |
| THOMPSON RIVERS | 33 | Thompson Nicola | 100 |
| THOMPSON RIVERS | 41 | Cariboo | 63 |

Appendix 4

Projected Annual Growth Rates in Occupational Demand (3-digit)

Selkirk College Region

Projected Annual Growth Rates in Occupational Demand

| | Estimated Employment | Average Annual % Change | | | Avg Annual % Chg Over 4 Years |
|--|-------------------------|-------------------------|------------------|------------------|----------------------------------|
| | <u>2005</u> | <u>2007/2005</u> | <u>2009/2007</u> | <u>2010/2009</u> | <u>2009/2005</u> |
| | | | | | |
| All occupations | 36,829 | 1.5 | 2.0 | 2.2 | 1.8 |
| A01.001 Legislators and Senior Management | 426 | 1.3 | 2.0 | 1.7 | 1.6 |
| A11.011 Administrative Services Managers | 261 | 1.2 | 1.5 | 2.4 | 1.4 |
| A12.021 Managers in Engineering, Architecture, Science & Information Systems | 124 | 1.2 | 1.6 | 2.0 | 1.4 |
| A13.061 Sales, Marketing and Advertising Managers | 242 | 1.2 | 1.8 | 3.0 | 1.5 |
| A14.072 Facility Operation and Maintenance Managers | 105 | 1.2 | 1.7 | 2.2 | 1.5 |
| A21.062 Managers in Retail Trade | 888 | 1.4 | 0.9 | 4.8 | 1.1 |
| A22.063 Managers in Food Service and Accommodation | 523 | 2.5 | 3.5 | 7.0 | 3.1 |
| A30.012 Managers in Financial and Business Services | 204 | 1.1 | 0.6 | 3.7 | 0.9 |
| A31.013 Managers in Communication (Except Broadcasting) | 20 | 1.5 | 1.7 | 1.2 | 1.7 |
| A32.031 Managers in Health, Education, Social and Community Services | 208 | 1.0 | 0.7 | 1.1 | 0.8 |
| A33.041 Managers in Public Administration | 26 | 0.6 | 0.7 | 1.2 | 0.6 |
| A34.051 Managers in Art, Culture, Recreation and Sport | 36 | 1.2 | 1.3 | 1.6 | 1.3 |
| A35.064 Managers in Protective Service | 31 | 0.2 | 0.3 | 0.3 | 0.3 |
| A36.065 Managers in Other Services | 49 | 1.2 | 1.5 | 3.0 | 1.3 |
| A37.071 Managers in Construction and Transportation | 469 | 2.5 | 6.9 | -4.7 | 4.9 |
| A38.081 Managers in Primary Production (Except Agriculture) | 70 | 1.4 | 0.4 | 0.4 | 0.9 |
| A39.091 Managers in Manufacturing and Utilities | 179 | 1.0 | 1.2 | 3.3 | 1.1 |
| B01.111 Auditors, Accountants and Investment Professionals | 732 | 1.2 | 1.2 | 2.8 | 1.2 |
| B02.112 Human Resources and Business Service Professionals | 206 | 1.0 | 1.2 | 2.0 | 1.2 |
| B11.123 Finance and Insurance Administrative Occupations | 548 | 1.3 | 1.9 | 2.0 | 1.6 |
| B21.124 Secretaries, Records and Transcriptionists | 781 | 1.4 | 1.9 | 1.5 | 1.7 |
| B31.122 Administrative and Regulatory Occupations | 609 | 1.3 | 1.9 | 1.7 | 1.6 |
| B41.121 Clerical Supervisors | 120 | 1.1 | 1.0 | 2.6 | 1.1 |
| B51.141 Clerical Occupations, General Office Skills | 977 | 1.4 | 1.7 | 2.2 | 1.6 |
| B52.142 Office Equipment Operators | 101 | 1.1 | 1.3 | 2.3 | 1.2 |
| B53.143 Finance and Insurance Clerks | 680 | 1.1 | 1.0 | 3.0 | 1.1 |
| B54.144 Administrative Support Clerks | 189 | 1.3 | 1.4 | 2.1 | 1.3 |
| B55.145 Library Correspondence and Related Information Clerks | 320 | 1.1 | 1.0 | 2.6 | 1.0 |

Selkirk College Region

Projected Annual Growth Rates in Occupational Demand

| | Estimated Employment | Average Annual % Change | | | Avg Annual % Chg Over 4 Years |
|---|-------------------------|-------------------------|------------------|------------------|----------------------------------|
| | <u>2005</u> | <u>2007/2005</u> | <u>2009/2007</u> | <u>2010/2009</u> | <u>2009/2005</u> |
| B56.146 Mail and Message Distribution Occupations | 139 | 2.1 | 1.9 | 2.6 | 2.0 |
| B57.147 Recording, Scheduling and Distributing Occupations | 371 | 1.1 | 1.3 | 2.9 | 1.2 |
| C01.211 Physical Science Professionals | 63 | 1.2 | 1.2 | 1.5 | 1.2 |
| C02.212 Life Science Professionals | 150 | 1.2 | 0.7 | 1.4 | 0.9 |
| C03.213 Civil, Mechanical, Electrical and Chemical Engineers | 246 | 1.3 | 2.2 | 1.3 | 1.8 |
| C04.214 Other Engineers | 140 | 1.1 | 1.5 | 1.8 | 1.3 |
| C05.215 Architects, Urban Planners and Land Surveyors | 100 | 1.4 | 2.5 | 1.0 | 2.0 |
| C06.216 Mathematicians, Statisticians and Actuaries | - | - | - | - | - |
| C07.217 Computer and Information Systems Professionals | 554 | 1.2 | 1.5 | 2.3 | 1.3 |
| C11.221 Technical Occupations in Physical Sciences | 73 | 0.9 | 0.8 | 0.9 | 0.9 |
| C12.222 Technical Occupations in Life Sciences | 194 | 1.1 | 0.5 | 0.9 | 0.8 |
| C13.223 Technical Occupations in Civil, Mechanical & Industrial Engineering | 112 | 2.0 | 4.8 | -2.0 | 3.5 |
| C14.224 Technical Occupations in Electronics and Electrical Engineering | 201 | 1.2 | 1.8 | 1.9 | 1.5 |
| C15.225 Technical Occupations in Architecture, Drafting, Surveying & Mapping | 149 | 1.2 | 1.9 | 1.6 | 1.6 |
| C16.226 Other Technical Inspectors and Regulatory Officers | 75 | 1.3 | 2.1 | 0.5 | 1.7 |
| C17.227 Transportation Officers and Controllers | 75 | 2.8 | 2.2 | 1.8 | 2.6 |
| C18.228 Technical Occupations in Computer and Information Systems | 185 | 1.1 | 1.2 | 2.4 | 1.2 |
| D01.311 Physicians Dentists and Veterinarians | 268 | 2.4 | 2.4 | 3.5 | 2.5 |
| D02.312 Optometrists, Chiropractors & Other Health Diagnosing/Treating Profs. | 36 | 2.4 | 2.4 | 3.6 | 2.5 |
| D03.313 Pharmacists, Dietitians and Nutritionists | 89 | 1.8 | 1.3 | 4.5 | 1.6 |
| D04.314 Therapy and Assessment Professionals | 124 | 2.3 | 2.3 | 3.4 | 2.4 |
| D11.315 Nurse Supervisors and Registered Nurses | 605 | 2.4 | 2.4 | 3.5 | 2.5 |
| D21.321 Medical Technologists and Technicians (Except Dental Health) | 213 | 2.2 | 2.3 | 3.4 | 2.3 |
| D22.322 Technical Occupations in Dental Health Care | 61 | 2.2 | 2.4 | 4.1 | 2.4 |
| D23.323 Other Technical Occupations in Health Care (Except Dental) | 281 | 2.2 | 2.2 | 3.4 | 2.2 |
| D31.341 Assisting Occupations in Support of Health Services | 574 | 2.3 | 2.3 | 3.6 | 2.4 |
| E01.411 Judges, Lawyers and Quebec Notaries | 183 | 1.1 | 1.6 | 2.3 | 1.4 |
| E02.415 Psychologists, Social Workers, Counsellors, Clergy & Probation Officers | 319 | 1.7 | 1.7 | 3.3 | 1.8 |
| E03 Policy and program officers researchers and consultants | 275 | 1.1 | 1.3 | 2.0 | 1.2 |
| E11.412 University Professors and Assistants | 195 | 0.1 | -0.6 | -0.7 | -0.2 |

Selkirk College Region

Projected Annual Growth Rates in Occupational Demand

| | Estimated Employment | Average Annual % Change | | | Avg Annual % Chg Over 4 Years |
|---|-------------------------|-------------------------|------------------|------------------|----------------------------------|
| | <u>2005</u> | <u>2007/2005</u> | <u>2009/2007</u> | <u>2010/2009</u> | <u>2009/2005</u> |
| E12.413 College and Other Vocational Instructors | 233 | 0.2 | -0.4 | -0.3 | -0.1 |
| E13.414 Secondary and Elementary School Teachers & Educational Counsellors | 1,041 | 0.1 | -0.6 | -0.7 | -0.3 |
| E21.421 Paralegals, Social Services Workers & Occupations in Education & Religion n.e.c. | 856 | 1.8 | 1.7 | 2.7 | 1.8 |
| F01 Librarians, archivists, conservators and curators | 24 | 1.1 | 1.2 | 0.9 | 1.2 |
| F02.512 Writing, Translating and Public Relations Professionals | 152 | 1.2 | 1.3 | 1.8 | 1.2 |
| F03.513 Creative and Performing Artists | 199 | 0.8 | 0.5 | 0.5 | 0.7 |
| F11.521 Technical Occupations in Libraries, Archives Museums & Art Galleries | 35 | 1.0 | 0.9 | 0.4 | 1.0 |
| F12.522 Photographers, Graphic Arts Technicians & Technical & coordinating Occupations in Motion Pictures Broadcasting & Performing | 100 | 1.3 | 1.5 | 1.7 | 1.4 |
| F13.523 Announcers and Other Performers | 22 | 1.5 | 1.6 | 2.3 | 1.6 |
| F14.524 Creative Designers and Craftspersons | 211 | 1.2 | 1.7 | 3.1 | 1.5 |
| F15.525 Athletes, Coaches, Referees and Related Occupations | 154 | 1.0 | 0.9 | 1.3 | 0.9 |
| G01.621 Sales and Service Supervisors | 248 | 1.9 | 2.0 | 5.4 | 2.0 |
| G11.641 Sales Representatives, Wholesale Trade | 245 | 1.0 | 1.7 | 3.4 | 1.4 |
| G12.622 Technical Sales Specialists, Wholesale Trade | 81 | 1.1 | 2.0 | 3.1 | 1.6 |
| G13.623 Insurance and Real Estate Sales Occupations and Buyers | 173 | 1.2 | 0.7 | 3.9 | 0.9 |
| G21.642 Retail Salespersons and Sales Clerks | 1,433 | 1.4 | 0.8 | 4.9 | 1.1 |
| G31.661 Cashiers | 651 | 1.5 | 1.0 | 5.3 | 1.3 |
| G41.624 Chefs and Cooks | 655 | 2.5 | 3.4 | 6.6 | 3.0 |
| G51.645 Occupations in Food and Beverage Service | 825 | 2.5 | 3.5 | 7.0 | 3.1 |
| G61.626 Police Officers and Fire-fighters | 162 | 0.2 | 0.4 | 0.3 | 0.3 |
| G62.646 Other Occupations in Protective Service | 132 | 0.4 | 0.6 | 0.9 | 0.5 |
| G63.665 Security Guards and Related Occupations | 56 | 1.3 | 1.3 | 3.2 | 1.3 |
| G71.643 Occupations in Travel and Accommodation | 163 | 2.7 | 3.1 | 4.7 | 3.0 |
| G72.644 Tour and Recreational Guides and Casino Occupations | 45 | 1.7 | 1.8 | 2.2 | 1.8 |
| G73.667 Other Occupations in Travel Accommodation, Amusement & Recreation | 45 | 1.9 | 2.2 | 3.4 | 2.1 |
| G81.647 Childcare and Home Support Workers | 781 | 1.4 | 1.2 | 2.6 | 1.3 |
| G91.627 Technical Occupations in Personal Service | 192 | 1.1 | 1.0 | 4.7 | 1.0 |
| G92.648 Other Occupations in Personal Service | 105 | 1.1 | 1.0 | 4.5 | 1.1 |

Selkirk College Region

Projected Annual Growth Rates in Occupational Demand

| | Estimated Employment | Average Annual % Change | | | Avg Annual % Chg Over 4 Years |
|---|-------------------------|-------------------------|------------------|------------------|----------------------------------|
| | <u>2005</u> | <u>2007/2005</u> | <u>2009/2007</u> | <u>2010/2009</u> | <u>2009/2005</u> |
| G93.666 Cleaners | 661 | 1.7 | 2.0 | 3.6 | 1.9 |
| G94.625 Butchers and Bakers | 169 | 1.9 | 1.2 | 4.6 | 1.6 |
| G96.664 Food Counter Attendants, Kitchen Helpers & Related Occupations | 826 | 2.5 | 3.3 | 6.6 | 3.0 |
| G97.662 Other Sales and Related Occupations | 543 | 1.4 | 0.7 | 5.0 | 1.0 |
| G98.668 Other Elemental Service Occupations | 103 | 1.5 | 1.6 | 4.4 | 1.6 |
| H01.721 Contractors and Supervisors, Trades and Related Workers | 347 | 2.3 | 5.8 | -3.4 | 4.2 |
| H02.722 Supervisors, Railway and Motor Transportation Occupations | 14 | 1.5 | 1.9 | 1.5 | 1.7 |
| H11.725 Plumbers, Pipefitters and Gas Fitters | 254 | 2.4 | 6.0 | -4.1 | 4.3 |
| H12.727 Carpenters and Cabinetmakers | 648 | 2.6 | 6.9 | -4.5 | 4.9 |
| H13.728 Masonry and Plastering Trades | 251 | 2.8 | 7.5 | -5.4 | 5.4 |
| H14.729 Other Construction Trades | 413 | 2.8 | 7.3 | -5.0 | 5.2 |
| H21.724 Electrical Trades and Telecommunications Occupations | 456 | 2.0 | 4.6 | -2.4 | 3.4 |
| H22.735 Stationary Engineers and Power Station and System Operators | 67 | 1.1 | 0.9 | 1.3 | 1.0 |
| H31.723 Machinists and Related Occupations | 80 | 0.8 | 1.1 | 3.4 | 1.0 |
| H32.726 Metal Forming, Shaping and Erecting Trades | 386 | 1.4 | 3.0 | -0.2 | 2.2 |
| H41.731 Machinery & Transportation Equipment Mechanics (Except Motor Vehicle) | 517 | 1.3 | 1.9 | 1.1 | 1.6 |
| H42.732 Automotive service technicians | 346 | 1.1 | 1.0 | 4.3 | 1.1 |
| H43.733 Other Mechanics | 56 | 1.3 | 1.8 | 3.3 | 1.6 |
| H51.734 Upholsterers, Tailors, Shoe Repairers, Jewellers & Related Occupations | 62 | 1.1 | 1.3 | 5.3 | 1.2 |
| H52.738 Printing Press Operators, Commercial Divers & Other Trades & Related Occupations n.e.c. | 73 | 0.8 | 1.4 | 4.5 | 1.1 |
| H53.744 Other installers repairers and servicers | 171 | 1.9 | 3.8 | -0.3 | 2.9 |
| H61.742 Heavy Equipment Operators | 294 | 2.2 | 4.9 | -3.1 | 3.7 |
| H62.737 Crane Operators Drillers and Blasters | 93 | 1.4 | 3.1 | -1.8 | 2.3 |
| H71.741 Motor Vehicle and Transit Drivers | 894 | 0.3 | 1.7 | 1.4 | 1.0 |
| H72.736 Train Crew Operating Occupations | 13 | 4.5 | 2.7 | 1.7 | 3.7 |
| H73.743 Other Transport Equipment Operators and Related Workers | 60 | 3.0 | 2.4 | 1.9 | 2.8 |
| H81.745 Longshore Workers and Material Handlers | 389 | 0.9 | 1.3 | 2.9 | 1.1 |
| H82.761 Trades Helpers and Labourers | 375 | 2.7 | 6.9 | -4.6 | 5.0 |

Selkirk College Region

Projected Annual Growth Rates in Occupational Demand

| | Estimated Employment | Average Annual % Change | | | Avg Annual % Chg Over 4 Years |
|---|-------------------------|-------------------------|------------------|------------------|----------------------------------|
| | <u>2005</u> | <u>2007/2005</u> | <u>2009/2007</u> | <u>2010/2009</u> | <u>2009/2005</u> |
| H83.762 Public Works and Other Labourers n.e.c. | 44 | 1.2 | 2.5 | -0.5 | 1.8 |
| I01.825 Contractors, Operators & Supervisors in Agriculture, Horticulture & Aquaculture | 458 | 0.9 | 0.5 | 4.0 | 0.7 |
| I02.843 Agriculture and Horticulture Workers | 378 | 0.9 | 0.4 | 4.2 | 0.7 |
| I11.821 Supervisors, Logging and Forestry | 65 | 1.4 | 0.1 | 0.7 | 0.7 |
| I12.822 Supervisors, Mining Oil and Gas | 22 | 1.5 | 1.2 | 0.3 | 1.4 |
| I13.823 Underground Miners, Oil and Gas Drillers and Related Workers | 20 | 1.4 | 1.0 | 0.6 | 1.2 |
| I14.841 Mine Service Workers and Operators in Oil and Gas Drilling | 17 | 2.0 | 1.9 | -1.0 | 2.0 |
| I15.824 Logging Machinery Operators | 112 | 1.5 | 0.1 | 0.2 | 0.8 |
| I16.842 Logging and Forestry Workers | 179 | 1.7 | -0.2 | -0.5 | 0.7 |
| I17.826 Fishing Vessel Masters and Skippers and Fishermen/women | - | - | - | - | - |
| I18.844 Other Fishing and Trapping Occupations | - | - | - | - | - |
| I21.861 Primary Production Labourers | 348 | 1.4 | 0.6 | 1.2 | 1.0 |
| J01.921 Supervisors, Processing Occupations | 199 | 0.8 | 0.8 | 2.3 | 0.8 |
| J02.922 Supervisors, Assembly and Fabrication | 36 | 0.9 | 1.5 | 3.5 | 1.2 |
| J11.923 Central Control & Process Operators in Manufacturing & Processing | 110 | 1.1 | 0.7 | 0.0 | 0.9 |
| J12.941 Machine Operators & Related Workers in Metal & Mineral Products Processing | 249 | 0.6 | 0.5 | 0.5 | 0.5 |
| J13.942 Machine Operators & Related Workers in Chemical, Plastic & Rubber Processing | 36 | 0.8 | 0.7 | 1.1 | 0.8 |
| J14.943 Machine Operators & Related Workers in Pulp & Paper Production & Wood Processing | 437 | 0.6 | 0.9 | 4.5 | 0.8 |
| J15.944 Machine Operators and Related Workers in Textile Processing | - | - | - | - | - |
| J16.945 Machine Operators and Related Workers in Fabric, Fur & Leather Products Manufacturing | 50 | 1.1 | 1.6 | 6.4 | 1.4 |
| J17.946 Machine Operators & Related Workers in Food, Beverage & Tobacco Processing | 53 | 2.9 | 1.6 | 1.7 | 2.3 |
| J18.947 Printing Machine Operators and Related Occupations | 58 | 1.1 | 1.2 | 5.0 | 1.2 |
| J19.951 Machining, Metalworking, Woodworking & Related Machine Operators | 106 | 0.6 | 0.8 | 2.4 | 0.7 |
| J21.948 Mechanical Electrical and Electronics Assemblers | 64 | 1.1 | 1.7 | 4.7 | 1.4 |

Selkirk College Region

Projected Annual Growth Rates in Occupational Demand

| | Estimated Employment | Average Annual % Change | | | Avg Annual % Chg Over 4 Years |
|---|-------------------------|-------------------------|------------------|------------------|----------------------------------|
| | <u>2005</u> | <u>2007/2005</u> | <u>2009/2007</u> | <u>2010/2009</u> | <u>2009/2005</u> |
| J22.949 Other Assembly and Related Occupations | 151 | 1.1 | 2.1 | 3.8 | 1.6 |
| J31.961 Labourers in Processing Manufacturing and Utilities | 849 | 0.8 | 0.9 | 3.3 | 0.8 |

Appendix 5

Projected Annual Growth Rates in Occupational Demand (4-digit)

Selkirk College Region

Projected Annual Growth Rates in Occupational Demand

| | Estimated Employment | Average Annual % Change | | | Avg Annual % Chg Over 4 Years |
|--|-------------------------|-------------------------|------------------|------------------|----------------------------------|
| | <u>2005</u> | <u>2007/2005</u> | <u>2009/2007</u> | <u>2010/2009</u> | <u>2009/2005</u> |
| All occupations | 36,829 | 1.5 | 2.0 | 2.2 | 1.8 |
| A Management occupations | 3,867 | 1.6 | 2.2 | 2.6 | 1.9 |
| A0 Senior management occupations | 428 | 1.3 | 2.0 | 1.7 | 1.6 |
| A01.001 Legislators and Senior Management | 426 | 1.3 | 2.0 | 1.7 | 1.6 |
| A011.0011 Legislators | 15 | 0.2 | 0.2 | 0.1 | 0.2 |
| A012.0012 Senior Government Managers and Officials | 41 | 0.4 | 0.5 | 0.5 | 0.5 |
| A013.0013 Senior Managers - Financial, Communications and Other Business Services | 110 | 1.1 | 1.3 | 2.8 | 1.2 |
| A014.0014 Senior Managers - Health, Education, Social and Community Services and Membership Organizations | 53 | 1.5 | 1.3 | 3.1 | 1.4 |
| A015.0015 Senior Managers - Trade, Broadcasting and Other Services n.e.c. | 76 | 1.3 | 1.6 | 4.9 | 1.5 |
| A016.0016 Senior Managers - Goods Production, Utilities, Transportation and Construction | 133 | 1.7 | 3.5 | -0.9 | 2.7 |
| A1 Specialist managers | 736 | 1.2 | 1.6 | 2.5 | 1.4 |
| A11.011 Administrative Services Managers | 261 | 1.2 | 1.5 | 2.4 | 1.4 |
| A111.0111 Financial Managers | 127 | 1.3 | 1.5 | 2.5 | 1.4 |
| A112.0112 Human Resources Managers | 53 | 1.1 | 1.2 | 2.3 | 1.2 |
| A113.0113 Purchasing Managers | 14 | 1.3 | 1.6 | 3.2 | 1.5 |
| A114.0114 Other Administrative Services Managers | 65 | 1.3 | 1.7 | 2.2 | 1.5 |
| A12.021 Managers in Engineering, Architecture, Science and Information Systems | 124 | 1.2 | 1.6 | 2.0 | 1.4 |
| A121.0211 Engineering Managers | 38 | 1.2 | 2.0 | 1.3 | 1.6 |
| A122.0213 Computer and Information Systems Managers | 73 | 1.1 | 1.4 | 2.4 | 1.3 |
| A123.0212 Architecture and Science Managers | 12 | 1.3 | 1.9 | 1.7 | 1.6 |
| A13.061 Sales, Marketing and Advertising Managers | 242 | 1.2 | 1.8 | 3.0 | 1.5 |
| A131.0611 Sales, Marketing and Advertising Managers | 243 | 1.2 | 1.8 | 3.0 | 1.5 |
| A14.072 Facility Operation and Maintenance Managers | 105 | 1.2 | 1.7 | 2.2 | 1.5 |
| A141.0721 Facility Operation and Maintenance Managers | 105 | 1.2 | 1.6 | 2.3 | 1.5 |

Selkirk College Region

Projected Annual Growth Rates in Occupational Demand

| | Estimated Employment | Average Annual % Change | | | Avg Annual % Chg Over 4 Years |
|---|-------------------------|-------------------------|------------------|------------------|----------------------------------|
| | <u>2005</u> | <u>2007/2005</u> | <u>2009/2007</u> | <u>2010/2009</u> | <u>2009/2005</u> |
| A2 Managers in retail trade, food and accommodation services | 1,413 | 1.8 | 1.8 | 5.7 | 1.9 |
| A21.062 Managers in Retail Trade | 888 | 1.4 | 0.9 | 4.8 | 1.1 |
| A211.0621 Retail Trade Managers | 890 | 1.4 | 0.9 | 4.8 | 1.1 |
| A22.063 Managers in Food Service and Accommodation | 523 | 2.5 | 3.5 | 7.0 | 3.1 |
| A221.0631 Restaurant and Food Service Managers | 390 | 2.5 | 3.5 | 7.0 | 3.1 |
| A222.0632 Accommodation Service Managers | 133 | 2.5 | 3.5 | 7.0 | 3.1 |
| A3 Other managers n.e.c. | 1,293 | 1.6 | 3.1 | -0.5 | 2.4 |
| A30.012 Managers in Financial and Business Services | 204 | 1.1 | 0.6 | 3.7 | 0.9 |
| A301.0121 Insurance, Real Estate and Financial Brokerage Managers | 53 | 1.2 | 1.0 | 3.0 | 1.1 |
| A302.0122 Banking, Credit and Other Investment Managers | 133 | 1.0 | 0.3 | 4.2 | 0.6 |
| A303.0123 Other Business Services Managers | 18 | 1.3 | 2.1 | 2.2 | 1.8 |
| A31.013 Managers in Communication (Except Broadcasting) | 20 | 1.5 | 1.7 | 1.2 | 1.7 |
| A311.0131 Telecommunication Carriers Managers | 18 | 1.4 | 1.6 | 1.0 | 1.5 |
| A312.0132 Postal and Courier Services Managers | - | - | - | - | - |
| A32.031 Managers in Health, Education, Social and Community Services | 208 | 1.0 | 0.7 | 1.1 | 0.8 |
| A321.0311 Managers in Health Care | 60 | 2.3 | 2.4 | 3.4 | 2.4 |
| A322.0312 Administrators - Post-Secondary Education and Vocational Training | 43 | 0.2 | -0.5 | -0.6 | -0.1 |
| A323.0313 School Principals and Administrators of Elementary and Secondary Education | 75 | 0.1 | -0.6 | -0.7 | -0.2 |
| A324.0314 Managers in Social, Community and Correctional Services | 31 | 1.7 | 1.8 | 3.2 | 1.8 |
| A33.041 Managers in Public Administration | 26 | 0.6 | 0.7 | 1.2 | 0.6 |
| A331.0411 Government Managers - Health and Social Policy Development and Program Administration | - | - | - | - | - |
| A332.0412 Government Managers - Economic Analysis, Policy Development and Program Administration | - | - | - | - | - |
| A333.0413 Government Managers - Education Policy Development and Program Administration | - | - | - | - | - |
| A334.0414 Other Managers in Public Administration | - | - | - | - | - |
| A34.051 Managers in Art, Culture, Recreation and Sport | 36 | 1.2 | 1.3 | 1.6 | 1.3 |

Selkirk College Region

Projected Annual Growth Rates in Occupational Demand

| | Estimated Employment | Average Annual % Change | | | Avg Annual % Chg Over 4 Years |
|---|-------------------------|-------------------------|------------------|------------------|----------------------------------|
| | <u>2005</u> | <u>2007/2005</u> | <u>2009/2007</u> | <u>2010/2009</u> | <u>2009/2005</u> |
| A341.0511 Library, Archive, Museum and Art Gallery Managers | - | - | - | - | - |
| A342.0512 Managers - Publishing, Motion Pictures, Broadcasting and Performing Arts | 13 | 1.4 | 1.6 | 1.5 | 1.5 |
| A343.0513 Recreation and Sports Program and Service Directors | 17 | 1.2 | 1.1 | 1.6 | 1.1 |
| A35.064 Managers in Protective Service | 31 | 0.2 | 0.3 | 0.3 | 0.3 |
| A351.0641 Commissioned Police Officers | - | - | - | - | - |
| A352.0642 Fire Chiefs and Senior Fire-fighting Officers | - | - | - | - | - |
| A353.0643 Commissioned Officers, Armed Forces | 20 | 0.2 | 0.3 | 0.3 | 0.3 |
| A36.065 Managers in Other Services | 49 | 1.2 | 1.5 | 3.0 | 1.3 |
| A361.0651 Other Services Managers | 48 | 1.2 | 1.4 | 3.0 | 1.3 |
| A37.071 Managers in Construction and Transportation | 469 | 2.5 | 6.9 | -4.7 | 4.9 |
| A371.0711 Construction Managers | 284 | 2.9 | 7.6 | -5.4 | 5.4 |
| A372.0712 Residential Home Builders and Renovators | 123 | 2.9 | 7.8 | -5.6 | 5.6 |
| A373.0713 Transportation Managers | 59 | 0.4 | 1.7 | 1.5 | 1.1 |
| A38.081 Managers in Primary Production (Except Agriculture) | 70 | 1.4 | 0.4 | 0.4 | 0.9 |
| A381.0811 Primary Production Managers (Except Agriculture) | 72 | 1.4 | 0.4 | 0.4 | 0.9 |
| A39.091 Managers in Manufacturing and Utilities | 179 | 1.0 | 1.2 | 3.3 | 1.1 |
| A391.0911 Manufacturing Managers | 148 | 1.0 | 1.3 | 3.8 | 1.1 |
| A392.0912 Utilities Managers | 29 | 1.0 | 0.9 | 0.8 | 1.0 |
| B Business, finance and administrative occupations | 5,778 | 1.3 | 1.5 | 2.3 | 1.4 |
| B0 Professional occupations in business and finance | 940 | 1.1 | 1.2 | 2.6 | 1.2 |
| B01.111 Auditors, Accountants and Investment Professionals | 732 | 1.2 | 1.2 | 2.8 | 1.2 |
| B011.1111 Financial Auditors and Accountants | 455 | 1.2 | 1.7 | 2.2 | 1.5 |
| B012.1112 Financial and Investment Analysts | 58 | 1.1 | 0.7 | 3.1 | 0.9 |
| B013.1113 Securities Agents, Investment Dealers and Brokers | 73 | 1.0 | 0.2 | 4.1 | 0.6 |
| B014.1114 Other Financial Officers | 147 | 1.0 | 0.4 | 3.9 | 0.7 |
| B02.112 Human Resources and Business Service Professionals | 206 | 1.0 | 1.2 | 2.0 | 1.2 |
| B021.1121 Specialists in Human Resources | 94 | 0.9 | 0.8 | 2.0 | 0.9 |
| B022.1122 Professional Occupations in Business Services to Management | 111 | 1.2 | 1.6 | 2.1 | 1.4 |

Selkirk College Region

Projected Annual Growth Rates in Occupational Demand

| | Estimated Employment | Average Annual % Change | | | Avg Annual % Chg Over 4 Years |
|---|-------------------------|-------------------------|------------------|------------------|----------------------------------|
| | <u>2005</u> | <u>2007/2005</u> | <u>2009/2007</u> | <u>2010/2009</u> | <u>2009/2005</u> |
| B1 Finance and insurance administration occupations | 549 | 1.3 | 1.9 | 2.0 | 1.6 |
| B11.123 Finance and Insurance Administrative Occupations | 548 | 1.3 | 1.9 | 2.0 | 1.6 |
| B111.1231 Bookkeepers | 386 | 1.5 | 2.5 | 1.4 | 2.0 |
| B112.1232 Loan Officers | 48 | 1.0 | 0.2 | 4.0 | 0.6 |
| B113.1233 Insurance Adjusters and Claims Examiners | 73 | 1.0 | 0.3 | 3.9 | 0.6 |
| B114.1234 Insurance Underwriters | 21 | 1.0 | 0.2 | 3.6 | 0.6 |
| B115.1235 Assessors, Valuers and Appraisers | 14 | 0.6 | 0.7 | 1.3 | 0.6 |
| B116.1236 Customs, Ship and Other Brokers | - | - | - | - | - |
| B2 Secretaries | 782 | 1.4 | 1.9 | 1.5 | 1.7 |
| B21.124 Secretaries, Records and Transcriptionists | 781 | 1.4 | 1.9 | 1.5 | 1.7 |
| B211.1241 Secretaries (Except Legal and Medical) | 532 | 1.2 | 1.9 | 0.8 | 1.5 |
| B212.1242 Legal Secretaries | 133 | 1.2 | 1.7 | 2.4 | 1.5 |
| B213.1243 Medical Secretaries | 103 | 2.4 | 2.4 | 3.5 | 2.5 |
| B214.1244 Court Records and Medical Transcriptionists | 12 | 2.2 | 2.2 | 3.2 | 2.3 |
| B3 Administrative and regulatory occupations | 611 | 1.3 | 1.9 | 1.7 | 1.6 |
| B31.122 Administrative and Regulatory Occupations | 609 | 1.3 | 1.9 | 1.7 | 1.6 |
| B311.1221 Administrative Officers | 391 | 1.4 | 2.1 | 1.7 | 1.8 |
| B312.1222 Executive Assistants | 50 | 1.2 | 1.5 | 1.8 | 1.4 |
| B313.1223 Personnel and Recruitment Officers | 19 | 1.2 | 1.3 | 1.7 | 1.2 |
| B314.1224 Property Administrators | 26 | 1.7 | 3.3 | 0.1 | 2.6 |
| B315.1225 Purchasing Agents and Officers | 50 | 1.2 | 1.7 | 2.6 | 1.5 |
| B316.1226 Conference and Event Planners | 22 | 1.2 | 1.3 | 2.8 | 1.3 |
| B317.1227 Court Officers and Justices of the Peace | - | - | - | - | - |
| B318.1228 Immigration, Employment Insurance and Revenue Officers | 38 | 0.2 | 0.3 | 0.3 | 0.3 |
| B4 Clerical supervisors | 118 | 1.1 | 1.1 | 2.6 | 1.1 |
| B41.121 Clerical Supervisors | 120 | 1.1 | 1.0 | 2.6 | 1.1 |
| B411.1211 Supervisors, General Office & Administrative Support Clerks | 34 | 1.0 | 1.0 | 1.7 | 1.0 |
| B412.1212 Supervisors, Finance and Insurance Clerks | 38 | 1.1 | 0.7 | 3.2 | 0.9 |
| B413.1213 Supervisors, Library Correspondence and Related Information | 15 | 0.8 | 0.7 | 1.8 | 0.8 |
| B414.1214 Supervisors, Mail and Message Distribution Occupations | - | - | - | - | - |

Selkirk College Region

Projected Annual Growth Rates in Occupational Demand

| | Estimated Employment | Average Annual % Change | | | Avg Annual % Chg Over 4 Years |
|---|-------------------------|-------------------------|------------------|------------------|----------------------------------|
| | <u>2005</u> | <u>2007/2005</u> | <u>2009/2007</u> | <u>2010/2009</u> | <u>2009/2005</u> |
| B415.1215 Supervisors, Recording, Distributing and Scheduling Occupations | 23 | 1.2 | 1.5 | 3.7 | 1.4 |
| B5 Clerical occupations | 2,780 | 1.3 | 1.4 | 2.5 | 1.3 |
| B51.141 Clerical Occupations, General Office Skills | 977 | 1.4 | 1.7 | 2.2 | 1.6 |
| B511.1411 General Office Clerks | 607 | 1.3 | 1.6 | 1.7 | 1.5 |
| B513.1413 Records Management and Filing Clerks | 50 | 1.5 | 1.5 | 2.7 | 1.5 |
| B514.1414 Receptionists and Switchboard Operators | 319 | 1.7 | 1.9 | 3.1 | 1.8 |
| B52.142 Office Equipment Operators | 101 | 1.1 | 1.3 | 2.3 | 1.2 |
| B522.1422 Data Entry Clerks | 82 | 1.1 | 1.2 | 2.3 | 1.2 |
| B523.1423 Desktop Publishing Operators and Related Occupations | - | - | - | - | - |
| B524.1424 Telephone Operators | 12 | 1.3 | 1.4 | 1.9 | 1.4 |
| B53.143 Finance and Insurance Clerks | 680 | 1.1 | 1.0 | 3.0 | 1.1 |
| B531.1431 Accounting and Related Clerks | 294 | 1.2 | 1.7 | 2.2 | 1.5 |
| B532.1432 Payroll Clerks | 80 | 1.2 | 1.4 | 1.7 | 1.3 |
| B533.1433 Customer Service Representatives - Financial Services | 216 | 1.0 | 0.2 | 4.2 | 0.6 |
| B534.1434 Banking, Insurance and Other Financial Clerks | 71 | 1.0 | 0.3 | 3.9 | 0.7 |
| B535.1435 Collectors | 23 | 0.9 | 0.6 | 2.8 | 0.8 |
| B54.144 Administrative Support Clerks | 189 | 1.3 | 1.4 | 2.1 | 1.3 |
| B541.1441 Administrative Clerks | 157 | 1.3 | 1.5 | 2.1 | 1.4 |
| B542.1442 Personnel Clerks | 24 | 1.3 | 1.2 | 2.2 | 1.2 |
| B543.1443 Court Clerks | - | - | - | - | - |
| B55.145 Library, Correspondence and Related Information Clerks | 320 | 1.1 | 1.0 | 2.6 | 1.0 |
| B551.1451 Library Clerks | 18 | 1.1 | 0.9 | 0.7 | 1.0 |
| B552.1452 Correspondence, Publication and Related Clerks | - | - | - | - | - |
| B553.1453 Customer Service, Information and Related Clerks | 239 | 1.2 | 1.1 | 3.1 | 1.2 |
| B554.1454 Survey Interviewers and Statistical Clerks | 58 | 0.4 | 0.6 | 0.8 | 0.5 |
| B56.146 Mail and Message Distribution Occupations | 139 | 2.1 | 1.9 | 2.6 | 2.0 |
| B561.1461 Mail, Postal and Related Clerks | 51 | 2.1 | 2.0 | 2.2 | 2.1 |
| B562.1462 Letter Carriers | 41 | 2.8 | 2.6 | 2.0 | 2.8 |
| B563.1463 Couriers, Messengers and Door-to-Door Distributors | 47 | 1.3 | 1.1 | 3.5 | 1.2 |

Selkirk College Region

Projected Annual Growth Rates in Occupational Demand

| | Estimated Employment | Average Annual % Change | | | Avg Annual % Chg Over 4 Years |
|---|-------------------------|-------------------------|------------------|------------------|----------------------------------|
| | <u>2005</u> | <u>2007/2005</u> | <u>2009/2007</u> | <u>2010/2009</u> | <u>2009/2005</u> |
| B57.147 Recording, Scheduling and Distributing Occupations | 371 | 1.1 | 1.3 | 2.9 | 1.2 |
| B571.1471 Shippers and Receivers | 184 | 1.1 | 1.3 | 3.2 | 1.2 |
| B572.1472 Storekeepers and Parts Clerks | 49 | 1.2 | 1.0 | 4.1 | 1.1 |
| B573.1473 Production Clerks | 27 | 1.0 | 1.1 | 2.0 | 1.0 |
| B574.1474 Purchasing and Inventory Clerks | 51 | 1.3 | 1.3 | 3.6 | 1.3 |
| B575.1475 Dispatchers and Radio Operators | 56 | 0.6 | 1.8 | 0.7 | 1.2 |
| B576.1476 Transportation Route and Crew | - | - | - | - | - |
| C Natural and applied sciences and related occupations | 2,326 | 1.3 | 1.7 | 1.5 | 1.5 |
| C0 Professional occupations in natural and applied sciences | 1,264 | 1.2 | 1.6 | 1.8 | 1.4 |
| C01.211 Physical Science Professionals | 63 | 1.2 | 1.2 | 1.5 | 1.2 |
| C011.2111 Physicists and Astronomers | - | - | - | - | - |
| C012.2112 Chemists | 20 | 1.2 | 1.4 | 2.1 | 1.3 |
| C013.2113 Geologists, Geochemists and Geophysicists | 30 | 1.3 | 1.2 | 0.9 | 1.2 |
| C014.2114 Meteorologists | - | - | - | - | - |
| C015.2115 Other Professional Occupations in Physical Sciences | - | - | - | - | - |
| C02.212 Life Science Professionals | 150 | 1.2 | 0.7 | 1.4 | 0.9 |
| C021.2121 Biologists and Related Scientists | 48 | 1.0 | 1.1 | 1.7 | 1.1 |
| C022.2122 Forestry Professionals | 94 | 1.2 | 0.5 | 1.1 | 0.9 |
| C023.2123 Agricultural Representatives, Consultants and Specialists | - | - | - | - | - |
| C03.213 Civil, Mechanical, Electrical and Chemical Engineers | 246 | 1.3 | 2.2 | 1.3 | 1.8 |
| C031.2131 Civil Engineers | 115 | 1.5 | 2.8 | 0.4 | 2.2 |
| C032.2132 Mechanical Engineers | 59 | 1.3 | 1.6 | 2.1 | 1.4 |
| C033.2133 Electrical and Electronics Engineers | 57 | 1.2 | 1.6 | 2.3 | 1.4 |
| C034.2134 Chemical Engineers | 17 | 1.2 | 1.2 | 1.4 | 1.2 |
| C04.214 Other Engineers | 140 | 1.1 | 1.5 | 1.8 | 1.3 |
| C041.2141 Industrial and Manufacturing Engineers | 25 | 0.9 | 1.1 | 1.3 | 1.0 |
| C042.2142 Metallurgical and Materials Engineers | 23 | 0.5 | 0.3 | 0.5 | 0.4 |
| C043.2143 Mining Engineers | - | - | - | - | - |
| C044.2144 Geological Engineers | 11 | 1.4 | 2.1 | 1.6 | 1.8 |
| C045.2145 Petroleum Engineers | - | - | - | - | - |

Selkirk College Region

Projected Annual Growth Rates in Occupational Demand

| | Estimated Employment | Average Annual % Change | | | Avg Annual % Chg Over 4 Years |
|--|-------------------------|-------------------------|------------------|------------------|----------------------------------|
| | <u>2005</u> | <u>2007/2005</u> | <u>2009/2007</u> | <u>2010/2009</u> | <u>2009/2005</u> |
| C046.2146 Aerospace Engineers | - | - | - | - | - |
| C047.2147 Computer Engineers (Except Software Engineers) | 47 | 1.1 | 1.6 | 2.6 | 1.4 |
| C048.2148 Other Professional Engineers n.e.c. | 21 | 1.5 | 1.7 | 2.8 | 1.6 |
| C05.215 Architects, Urban Planners and Land Surveyors | 100 | 1.4 | 2.5 | 1.0 | 2.0 |
| C051.2151 Architects | 51 | 1.3 | 2.3 | 1.8 | 1.8 |
| C052.2152 Landscape Architects | - | - | - | - | - |
| C053.2153 Urban and Land Use Planners | 20 | 1.4 | 3.2 | -1.4 | 2.3 |
| C054.2154 Land Surveyors | 23 | 1.4 | 2.5 | 1.1 | 2.0 |
| C06.216 Mathematicians, Statisticians and Actuaries | - | - | - | - | - |
| C061.2161 Mathematicians, Statisticians and Actuaries | - | - | - | - | - |
| C07.217 Computer and Information Systems Professionals | 554 | 1.2 | 1.5 | 2.3 | 1.3 |
| C071.2171 Information Systems Analysts and Consultants | 187 | 1.1 | 1.4 | 2.2 | 1.2 |
| C072.2172 Database Analysts and Data Administrators | 27 | 1.2 | 1.4 | 2.2 | 1.3 |
| C073.2173 Software Engineers | 70 | 1.2 | 1.7 | 2.6 | 1.5 |
| C074.2174 Computer Programmers and Interactive Media Developers | 195 | 1.2 | 1.5 | 2.4 | 1.3 |
| C075.2175 Web Designers and Developers | 74 | 1.2 | 1.7 | 2.3 | 1.4 |
| C1 Technical occupations related to natural and applied sciences | 1,062 | 1.4 | 1.8 | 1.2 | 1.6 |
| C11.221 Technical Occupations in Physical Sciences | 73 | 0.9 | 0.8 | 0.9 | 0.9 |
| C111.2211 Chemical Technologists and Technicians | 37 | 0.9 | 0.7 | 0.9 | 0.8 |
| C112.2212 Geological and Mineral Technologists and Technicians | 34 | 1.0 | 0.8 | 0.6 | 0.9 |
| C113.2213 Meteorological Technicians | - | - | - | - | - |
| C12.222 Technical Occupations in Life Sciences | 194 | 1.1 | 0.5 | 0.9 | 0.8 |
| C121.2221 Biological Technologists and Technicians | 36 | 0.8 | 0.8 | 2.0 | 0.8 |
| C122.2222 Agricultural and Fish Products Inspectors | - | - | - | - | - |
| C123.2223 Forestry Technologists and Technicians | 119 | 1.3 | 0.2 | 0.6 | 0.8 |
| C124.2224 Conservation and Fishery Officers | 15 | 0.5 | 0.5 | 0.7 | 0.5 |
| C125.2225 Landscape and Horticultural Technicians and Specialists | 17 | 1.2 | 1.6 | 1.1 | 1.4 |
| C13.223 Technical Occupations in Civil, Mechanical and Industrial Engineering | 112 | 2.0 | 4.8 | -2.0 | 3.5 |
| C131.2231 Civil Engineering Technologists and Technicians | 26 | 1.4 | 2.8 | -0.2 | 2.2 |

Selkirk College Region

Projected Annual Growth Rates in Occupational Demand

| | Estimated Employment | Average Annual % Change | | | Avg Annual % Chg Over 4 Years |
|---|-------------------------|-------------------------|------------------|------------------|----------------------------------|
| | <u>2005</u> | <u>2007/2005</u> | <u>2009/2007</u> | <u>2010/2009</u> | <u>2009/2005</u> |
| C132.2232 Mechanical Engineering Technologists and Technicians | 18 | 1.5 | 2.9 | 1.3 | 2.2 |
| C133.2233 Industrial Engineering and Manufacturing Technologists and Technicians | 12 | 1.5 | 2.4 | 2.5 | 2.0 |
| C134.2234 Construction Estimators | 54 | 2.7 | 7.1 | -4.7 | 5.1 |
| C14.224 Technical Occupations in Electronics & Electrical Engineering | 201 | 1.2 | 1.8 | 1.9 | 1.5 |
| C141.2241 Electrical and Electronics Engineering Technologists and Technicians | 59 | 1.1 | 1.5 | 2.6 | 1.3 |
| C142.2242 Electronic Service Technicians (Household and Business Equipment) | 101 | 1.3 | 2.1 | 1.9 | 1.8 |
| C143.2243 Industrial Instrument Technicians and Mechanics | 32 | 1.2 | 1.1 | 0.5 | 1.1 |
| C144.2244 Aircraft Instrument Electrical and Avionics Mechanics, Technicians and Inspectors | - | - | - | - | - |
| C15.225 Technical Occupations in Architecture, Drafting, Surveying and Mapping | 149 | 1.2 | 1.9 | 1.6 | 1.6 |
| C151.2251 Architectural Technologists and Technicians | 15 | 1.3 | 2.4 | 1.5 | 1.9 |
| C152.2252 Industrial Designers | 11 | 1.4 | 2.4 | 2.4 | 1.9 |
| C153.2253 Drafting Technologists and Technicians | 80 | 1.3 | 2.2 | 1.6 | 1.7 |
| C154.2254 Land Survey Technologists and Technicians | - | - | - | - | - |
| C155.2255 Mapping and Related Technologists and Technicians | 34 | 0.9 | 1.0 | 1.7 | 0.9 |
| C16.226 Other Technical Inspectors and Regulatory Officers | 75 | 1.3 | 2.1 | 0.5 | 1.7 |
| C161.2261 Nondestructive Testers and Inspectors | - | - | - | - | - |
| C162.2262 Engineering Inspectors and Regulatory Officers | - | - | - | - | - |
| C163.2263 Inspectors in Public and Environmental Health and Occupational Health and Safety | 32 | 1.3 | 1.7 | 1.1 | 1.6 |
| C164.2264 Construction Inspectors | 24 | 1.4 | 3.1 | -1.0 | 2.3 |
| C17.227 Transportation Officers and Controllers | 75 | 2.8 | 2.2 | 1.8 | 2.6 |
| C171.2271 Air Pilots, Flight Engineers and Flying Instructors | 34 | 2.4 | 2.1 | 1.7 | 2.3 |
| C172.2272 Air Traffic Control and Related Occupations | - | - | - | - | - |
| C173.2273 Deck Officers, Water Transport | 19 | 3.3 | 2.3 | 1.8 | 2.9 |
| C174.2274 Engineer Officers, Water Transport | - | - | - | - | - |

Selkirk College Region

Projected Annual Growth Rates in Occupational Demand

| | Estimated Employment | Average Annual % Change | | | Avg Annual % Chg Over 4 Years |
|---|-------------------------|-------------------------|------------------|------------------|----------------------------------|
| | <u>2005</u> | <u>2007/2005</u> | <u>2009/2007</u> | <u>2010/2009</u> | <u>2009/2005</u> |
| C175.2275 Railway Traffic Controllers and Marine Traffic Regulators | - | - | - | - | - |
| C18.228 Technical Occupations in Computer and Information Systems | 185 | 1.1 | 1.2 | 2.4 | 1.2 |
| C181.2281 Computer and Network Operators and Web Technicians | 99 | 1.1 | 1.2 | 2.3 | 1.1 |
| C182.2282 User Support Technicians | 74 | 1.1 | 1.1 | 2.4 | 1.1 |
| C183.2283 Systems Testing Technicians | 14 | 1.2 | 1.5 | 2.7 | 1.4 |
| D Health occupations | 2,251 | 2.3 | 2.3 | 3.6 | 2.3 |
| D0 Professional occupations in health | 516 | 2.2 | 2.2 | 3.6 | 2.3 |
| D01.311 Physicians Dentists and Veterinarians | 268 | 2.4 | 2.4 | 3.5 | 2.5 |
| D011.3111 Specialist Physicians | 59 | 2.4 | 2.5 | 3.5 | 2.5 |
| D012.3112 General Practitioners and Family Physicians | 127 | 2.4 | 2.5 | 3.6 | 2.5 |
| D013.3113 Dentists | 64 | 2.4 | 2.5 | 3.6 | 2.5 |
| D014.3114 Veterinarians | 18 | 1.2 | 1.7 | 2.4 | 1.5 |
| D02.312 Optometrists, Chiropractors and Other Health Diagnosing and Treating Professionals | 36 | 2.4 | 2.4 | 3.6 | 2.5 |
| D021.3121 Optometrists | - | - | - | - | - |
| D022.3122 Chiropractors | 18 | 2.4 | 2.5 | 3.6 | 2.5 |
| D023.3123 Other Professional Occupations in Health Diagnosing and Treating | - | - | - | - | - |
| D03.313 Pharmacists, Dietitians and Nutritionists | 89 | 1.8 | 1.3 | 4.5 | 1.6 |
| D031.3131 Pharmacists | 67 | 1.6 | 1.0 | 4.8 | 1.3 |
| D032.3132 Dietitians and Nutritionists | 22 | 2.3 | 2.3 | 3.6 | 2.3 |
| D04.314 Therapy and Assessment Professionals | 124 | 2.3 | 2.3 | 3.4 | 2.4 |
| D041.3141 Audiologists and Speech-Language Pathologists | 19 | 1.8 | 1.7 | 2.5 | 1.8 |
| D042.3142 Physiotherapists | 55 | 2.4 | 2.5 | 3.6 | 2.5 |
| D043.3143 Occupational Therapists | 30 | 2.4 | 2.4 | 3.5 | 2.5 |
| D044.3144 Other Professional Occupations in Therapy and Assessment | 20 | 2.3 | 2.2 | 3.3 | 2.3 |
| D1 Nurse supervisors and registered nurses | 605 | 2.4 | 2.4 | 3.5 | 2.5 |
| D11.315 Nurse Supervisors and Registered Nurses | 605 | 2.4 | 2.4 | 3.5 | 2.5 |
| D111.3151 Head Nurses and Supervisors | 20 | 2.3 | 2.4 | 3.5 | 2.4 |
| D112.3152 Registered Nurses | 582 | 2.4 | 2.4 | 3.5 | 2.5 |

Selkirk College Region

Projected Annual Growth Rates in Occupational Demand

| | Estimated Employment | Average Annual % Change | | | Avg Annual % Chg Over 4 Years |
|---|-------------------------|-------------------------|------------------|------------------|----------------------------------|
| | <u>2005</u> | <u>2007/2005</u> | <u>2009/2007</u> | <u>2010/2009</u> | <u>2009/2005</u> |
| D2 Technical and related occupations in health | 557 | 2.2 | 2.2 | 3.5 | 2.3 |
| D21.321 Medical Technologists and Technicians (Except Dental Health) | 213 | 2.2 | 2.3 | 3.4 | 2.3 |
| D211.3211 Medical Laboratory Technologists and Pathologists' Assistants | 65 | 2.3 | 2.3 | 3.4 | 2.4 |
| D212.3212 Medical Laboratory Technicians | 51 | 2.3 | 2.3 | 3.4 | 2.4 |
| D213.3213 Veterinary and Animal Health Technologists and Technicians | 25 | 1.3 | 1.8 | 2.6 | 1.5 |
| D214.3214 Respiratory Therapists, Clinical Perfusionists and Cardio- Pulmonary Technologists | 15 | 2.4 | 2.4 | 3.6 | 2.4 |
| D215.3215 Medical Radiation Technologists | 35 | 2.4 | 2.4 | 3.6 | 2.5 |
| D216.3216 Medical Sonographers | - | - | - | - | - |
| D217.3217 Cardiology Technologists | - | - | - | - | - |
| D218.3218 Electroencephalographic and Other Diagnostic Technologists n.e.c. | - | - | - | - | - |
| D219.3219 Other Medical Technologists and Technicians (Except Dental Health) | - | - | - | - | - |
| D22.322 Technical Occupations in Dental Health Care | 61 | 2.2 | 2.4 | 4.1 | 2.4 |
| D221.3221 Denturists | - | - | - | - | - |
| D222.3222 Dental Hygienists and Dental Therapists | 40 | 2.4 | 2.5 | 3.6 | 2.5 |
| D223.3223 Dental Technologists, Technicians and Laboratory Bench Workers | 16 | 1.7 | 2.1 | 5.4 | 1.9 |
| D23.323 Other Technical Occupations in Health Care (Except Dental) | 281 | 2.2 | 2.2 | 3.4 | 2.2 |
| D231.3231 Opticians | 24 | 1.5 | 0.9 | 4.9 | 1.3 |
| D232.3232 Midwives and Practitioners of Natural Healing | 23 | 2.3 | 2.2 | 3.7 | 2.3 |
| D233.3233 Licensed Practical Nurses | 123 | 2.4 | 2.5 | 3.6 | 2.5 |
| D234.3234 Ambulance Attendants and Other Paramedical Occupations | 68 | 1.9 | 2.1 | 2.3 | 2.0 |
| D235.3235 Other Technical Occupations in Therapy and Assessment | 45 | 2.1 | 2.1 | 3.9 | 2.1 |
| D3 Assisting occupations in support of health services | 573 | 2.3 | 2.3 | 3.7 | 2.4 |
| D31.341 Assisting Occupations in Support of Health Services | 574 | 2.3 | 2.3 | 3.6 | 2.4 |
| D311.3411 Dental Assistants | 98 | 2.4 | 2.5 | 3.5 | 2.5 |
| D312.3413 Nurse Aides, Orderlies and Patient Service Associates | 356 | 2.4 | 2.4 | 3.5 | 2.5 |

Selkirk College Region

Projected Annual Growth Rates in Occupational Demand

| | Estimated Employment | Average Annual % Change | | | Avg Annual % Chg Over 4 Years |
|---|-------------------------|-------------------------|------------------|------------------|----------------------------------|
| | <u>2005</u> | <u>2007/2005</u> | <u>2009/2007</u> | <u>2010/2009</u> | <u>2009/2005</u> |
| D313.3414 Other Assisting Occupations in Support of Health Services | 118 | 2.0 | 1.8 | 4.1 | 1.9 |
| E Occupations in social science, education, government service & religion | 3,100 | 0.9 | 0.6 | 1.2 | 0.8 |
| E0 Judges, lawyers, psychologists, social workers, ministers of religion and policy and program officers | 775 | 1.4 | 1.6 | 2.6 | 1.5 |
| E01.411 Judges, Lawyers and Quebec Notaries | 183 | 1.1 | 1.6 | 2.3 | 1.4 |
| E011.4111 Judges | - | - | - | - | - |
| E012.4112 Lawyers and Quebec Notaries | 177 | 1.2 | 1.7 | 2.4 | 1.4 |
| E02.415 Psychologists, Social Workers, Counsellors, Clergy and Probation Officers | 319 | 1.7 | 1.7 | 3.3 | 1.8 |
| E021.4151 Psychologists | 37 | 1.9 | 1.8 | 2.6 | 1.9 |
| E022.4152 Social Workers | 101 | 1.8 | 1.9 | 2.8 | 1.9 |
| E023.4153 Family, Marriage and Other Related Counsellors | 100 | 2.1 | 2.1 | 3.3 | 2.2 |
| E024.4154 Ministers of Religion | 71 | 1.1 | 1.0 | 4.6 | 1.1 |
| E025.4155 Probation and Parole Officers and Related Occupations | 13 | 0.5 | 0.6 | 0.8 | 0.6 |
| E03 Policy and program officers, researchers and consultants | 275 | 1.1 | 1.3 | 2.0 | 1.2 |
| E031.4161 Natural and Applied Science Policy Researchers, Consultants and Program Officers | 32 | 1.1 | 1.4 | 2.1 | 1.3 |
| E032.4162 Economists and Economic Policy Researchers and Analysts | 11 | 0.8 | 1.0 | 1.7 | 0.9 |
| E033.4163 Business Development Officers and Marketing Researchers and Consultants | 72 | 1.2 | 1.5 | 2.5 | 1.4 |
| E034.4164 Social Policy Researchers, Consultants & Program Officers | 44 | 1.1 | 1.3 | 2.0 | 1.2 |
| E035.4166 Education Policy Researchers Consultants & Program Officers | 29 | 0.4 | 0.0 | 0.0 | 0.2 |
| E036.4167 Recreation, Sports and Fitness Program Supervisors and Consultants | 32 | 1.5 | 1.5 | 2.5 | 1.6 |
| E037.4168 Program Officers Unique to Government | 11 | 0.2 | 0.3 | 0.3 | 0.3 |
| E038.4169 Other Professional Occupations in Social Science | - | - | - | - | - |
| E039.4165 Health Policy Researchers, Consultants & Program Officers | 34 | 1.6 | 1.8 | 2.8 | 1.7 |
| E1 Teachers and professors | 1,471 | 0.1 | -0.6 | -0.7 | -0.2 |
| E11.412 University Professors and Assistants | 195 | 0.1 | -0.6 | -0.7 | -0.2 |

Selkirk College Region

Projected Annual Growth Rates in Occupational Demand

| | Estimated Employment | Average Annual % Change | | | Avg Annual % Chg Over 4 Years |
|---|-------------------------|-------------------------|------------------|------------------|----------------------------------|
| | <u>2005</u> | <u>2007/2005</u> | <u>2009/2007</u> | <u>2010/2009</u> | <u>2009/2005</u> |
| E111.4121 University Professors | 98 | 0.1 | -0.6 | -0.8 | -0.3 |
| E112.4122 Post-Secondary Teaching and Research Assistants | 96 | 0.2 | -0.5 | -0.6 | -0.2 |
| E12.413 College and Other Vocational Instructors | 233 | 0.2 | -0.4 | -0.3 | -0.1 |
| E121.4131 College and Other Vocational Instructors | 233 | 0.2 | -0.4 | -0.3 | -0.1 |
| E13.414 Secondary and Elementary School Teachers and Educational Counsellors | 1,041 | 0.1 | -0.6 | -0.7 | -0.3 |
| E131.4141 Secondary School Teachers | 412 | 0.1 | -0.6 | -0.8 | -0.3 |
| E132.4142 Elementary School and Kindergarten Teachers | 574 | 0.1 | -0.6 | -0.8 | -0.3 |
| E133.4143 Educational Counsellors | 55 | 0.2 | -0.5 | -0.6 | -0.2 |
| E2 Paralegals, social services workers and occupations in education and religion n.e.c. | 856 | 1.8 | 1.7 | 2.7 | 1.8 |
| E21.421 Paralegals, Social Services Workers and Occupations in Education and Religion n.e.c. | 856 | 1.8 | 1.7 | 2.7 | 1.8 |
| E211.4211 Paralegal and Related Occupations | 75 | 1.1 | 1.6 | 2.3 | 1.4 |
| E212.4212 Community and Social Service Workers | 245 | 1.9 | 1.9 | 3.1 | 2.0 |
| E213.4213 Employment Counsellors | 34 | 1.5 | 1.4 | 2.4 | 1.5 |
| E214.4215 Instructors and Teachers of Persons with Disabilities | 25 | 0.9 | 0.5 | 0.8 | 0.7 |
| E215.4216 Other Instructors | 97 | 0.3 | -0.3 | -0.2 | 0.0 |
| E216.4217 Other Religious Occupations | 15 | 1.1 | 1.0 | 4.3 | 1.1 |
| E217.4214 Early Childhood Educators and Assistants | 364 | 2.3 | 2.3 | 3.4 | 2.4 |
| F Occupations in art, culture, recreation and sport | 897 | 1.1 | 1.2 | 1.7 | 1.1 |
| F0 Professional Occupations in Art and Culture | 372 | 1.0 | 0.9 | 1.1 | 0.9 |
| F01 Librarians, archivists, conservators and curators | 24 | 1.1 | 1.2 | 0.9 | 1.2 |
| F011.5111 Librarians | 17 | 1.1 | 1.0 | 0.9 | 1.1 |
| F012.5112 Conservators and Curators | - | - | - | - | - |
| F013.5113 Archivists | - | - | - | - | - |
| F02.512 Writing, Translating and Public Relations Professionals | 152 | 1.2 | 1.3 | 1.8 | 1.2 |
| F021.5121 Authors and Writers | 44 | 1.3 | 1.4 | 1.5 | 1.4 |
| F022.5122 Editors | 18 | 1.2 | 1.2 | 1.3 | 1.2 |
| F023.5123 Journalists | 13 | 1.4 | 1.3 | 1.1 | 1.4 |

Selkirk College Region

Projected Annual Growth Rates in Occupational Demand

| | Estimated Employment | Average Annual % Change | | | Avg Annual % Chg Over 4 Years |
|---|-------------------------|-------------------------|------------------|------------------|----------------------------------|
| | <u>2005</u> | <u>2007/2005</u> | <u>2009/2007</u> | <u>2010/2009</u> | <u>2009/2005</u> |
| F024.5124 Professional Occupations in Public Relations and Communications | 57 | 1.1 | 1.2 | 2.3 | 1.1 |
| F025.5125 Translators, Terminologists and Interpreters | 21 | 1.1 | 1.5 | 2.0 | 1.3 |
| F03.513 Creative and Performing Artists | 199 | 0.8 | 0.5 | 0.5 | 0.7 |
| F031.5131 Producers, Directors, Choreographers & Related Occupations | 34 | 1.3 | 1.2 | 1.0 | 1.3 |
| F032.5132 Conductors, Composers and Arrangers | - | - | - | - | - |
| F033.5133 Musicians and Singers | 83 | 0.4 | -0.1 | -0.1 | 0.2 |
| F034.5134 Dancers | 20 | 0.3 | -0.3 | -0.3 | 0.0 |
| F035.5135 Actors and Comedians | 19 | 1.3 | 1.2 | 0.9 | 1.3 |
| F036.5136 Painters, Sculptors and Other Visual Artists | 37 | 1.2 | 1.1 | 1.1 | 1.1 |
| F1 Technical occupations in art, culture, recreation and sport | 522 | 1.2 | 1.4 | 2.1 | 1.3 |
| F11.521 Technical Occupations in Libraries, Archives, Museums and Art Galleries | 35 | 1.0 | 0.9 | 0.4 | 1.0 |
| F111.5211 Library and Archive Technicians and Assistants | 27 | 0.9 | 0.6 | 0.5 | 0.8 |
| F112.5212 Technical Occupations Related to Museums and Art Galleries | - | - | - | - | - |
| F12.522 Photographers, Graphic Arts Technicians & Technical & coordinating Occupations in Motion Pictures, Broadcasting & Performing Arts | 100 | 1.3 | 1.5 | 1.7 | 1.4 |
| F121.5221 Photographers | 33 | 1.2 | 1.7 | 2.5 | 1.5 |
| F122.5222 Film and Video Camera Operators | - | - | - | - | - |
| F123.5223 Graphic Arts Technicians | - | - | - | - | - |
| F124.5224 Broadcast Technicians | - | - | - | - | - |
| F125.5225 Audio and Video Recording Technicians | 12 | 1.3 | 1.3 | 1.5 | 1.3 |
| F126.5226 Other Technical and Co-ordinating Occupations in Motion Pictures, Broadcasting and the Performing Arts | 17 | 1.3 | 1.3 | 1.4 | 1.3 |
| F127.5227 Support Occupations in Motion Pictures, Broadcasting and the Performing Arts | 19 | 1.4 | 1.4 | 0.9 | 1.4 |
| F13.523 Announcers and Other Performers | 22 | 1.5 | 1.6 | 2.3 | 1.6 |
| F131.5231 Announcers and Other Broadcasters | 16 | 1.6 | 1.7 | 2.1 | 1.6 |
| F132.5232 Other Performers | - | - | - | - | - |
| F14.524 Creative Designers and Craftspersons | 211 | 1.2 | 1.7 | 3.1 | 1.5 |

Selkirk College Region

Projected Annual Growth Rates in Occupational Demand

| | Estimated Employment | Average Annual % Change | | | Avg Annual % Chg Over 4 Years |
|---|-------------------------|-------------------------|------------------|------------------|----------------------------------|
| | <u>2005</u> | <u>2007/2005</u> | <u>2009/2007</u> | <u>2010/2009</u> | <u>2009/2005</u> |
| F141.5241 Graphic Designers and Illustrators | 96 | 1.2 | 1.7 | 2.7 | 1.5 |
| F142.5242 Interior Designers | 35 | 1.5 | 2.5 | 1.7 | 2.0 |
| F143.5243 Theatre, Fashion, Exhibit and Other Creative Designers | 20 | 1.3 | 1.5 | 2.9 | 1.4 |
| F144.5244 Artisans and Craftspersons | 58 | 1.2 | 1.3 | 4.5 | 1.2 |
| F145.5245 Patternmakers - Textile, Leather and Fur Products | - | - | - | - | - |
| F15.525 Athletes, Coaches, Referees and Related Occupations | 154 | 1.0 | 0.9 | 1.3 | 0.9 |
| F151.5251 Athletes | - | - | - | - | - |
| F152.5252 Coaches | 22 | 0.6 | 0.0 | 0.2 | 0.3 |
| F153.5253 Sports Officials and Referees | 11 | 1.3 | 1.2 | 2.0 | 1.2 |
| F154.5254 Program Leaders and Instructors in Recreation and Sport | 116 | 1.0 | 1.0 | 1.5 | 1.0 |
| G Sales and service occupations | 8,291 | 1.7 | 1.8 | 4.9 | 1.8 |
| G0 Sales and service supervisors | 248 | 1.9 | 2.0 | 5.4 | 2.0 |
| G01.621 Sales and Service Supervisors | 248 | 1.9 | 2.0 | 5.4 | 2.0 |
| G011.6211 Retail Trade Supervisors | 111 | 1.4 | 0.8 | 4.9 | 1.1 |
| G012.6212 Food Service Supervisors | 91 | 2.5 | 3.4 | 6.6 | 3.0 |
| G013.6213 Executive Housekeepers | 11 | 2.5 | 3.3 | 6.3 | 3.0 |
| G014.6214 Dry Cleaning and Laundry Supervisors | - | - | - | - | - |
| G015.6215 Cleaning Supervisors | - | - | - | - | - |
| G016.6216 Other Service Supervisors | 18 | 2.0 | 2.6 | 3.8 | 2.3 |
| G1 Wholesale, technical, insurance, real estate sales specialists and retail, wholesale and grain buyers | 498 | 1.1 | 1.4 | 3.5 | 1.3 |
| G11.641 Sales Representatives, Wholesale Trade | 245 | 1.0 | 1.7 | 3.4 | 1.4 |
| G111.6411 Sales Representatives - Wholesale Trade (Non-Technical) | 244 | 1.0 | 1.8 | 3.5 | 1.4 |
| G12.622 Technical Sales Specialists, Wholesale Trade | 81 | 1.1 | 2.0 | 3.1 | 1.6 |
| G121.6221 Technical Sales Specialists - Wholesale Trade | 80 | 1.1 | 2.0 | 3.0 | 1.6 |
| G13.623 Insurance and Real Estate Sales Occupations and Buyers | 173 | 1.2 | 0.7 | 3.9 | 0.9 |
| G131.6231 Insurance Agents and Brokers | 122 | 1.0 | 0.2 | 4.2 | 0.6 |
| G132.6232 Real Estate Agents and Salespersons | - | - | - | - | - |
| G133.6233 Retail and Wholesale Buyers | 42 | 1.3 | 1.1 | 4.5 | 1.2 |
| G134.6234 Grain Elevator Operators | - | - | - | - | - |

Selkirk College Region

Projected Annual Growth Rates in Occupational Demand

| | Estimated Employment | Average Annual % Change | | | Avg Annual % Chg Over 4 Years |
|--|-------------------------|-------------------------|------------------|------------------|----------------------------------|
| | <u>2005</u> | <u>2007/2005</u> | <u>2009/2007</u> | <u>2010/2009</u> | <u>2009/2005</u> |
| G2 Retail salespersons and sales clerks | 1,430 | 1.4 | 0.8 | 4.9 | 1.1 |
| G21.642 Retail Salespersons and Sales Clerks | 1,433 | 1.4 | 0.8 | 4.9 | 1.1 |
| G211.6421 Retail Salespersons and Sales Clerks | 1,433 | 1.4 | 0.8 | 4.9 | 1.1 |
| G3 Cashiers | 651 | 1.5 | 1.0 | 5.3 | 1.3 |
| G31.661 Cashiers | 651 | 1.5 | 1.0 | 5.3 | 1.3 |
| G311.6611 Cashiers | 652 | 1.5 | 1.0 | 5.3 | 1.3 |
| G4 Chefs and cooks | 655 | 2.5 | 3.4 | 6.6 | 3.0 |
| G41.624 Chefs and Cooks | 655 | 2.5 | 3.4 | 6.6 | 3.0 |
| G411.6241 Chefs | 120 | 2.5 | 3.4 | 6.8 | 3.0 |
| G412.6242 Cooks | 535 | 2.5 | 3.3 | 6.6 | 3.0 |
| G5 Occupations in food and beverage service | 825 | 2.5 | 3.5 | 7.0 | 3.1 |
| G51.645 Occupations in Food and Beverage Service | 825 | 2.5 | 3.5 | 7.0 | 3.1 |
| G511.6451 Maîtres d'hôtel and Hosts/Hostesses | 74 | 2.5 | 3.4 | 6.9 | 3.1 |
| G512.6452 Bartenders | 111 | 2.4 | 3.4 | 6.9 | 3.0 |
| G513.6453 Food and Beverage Servers | 641 | 2.6 | 3.5 | 7.1 | 3.1 |
| G6 Occupations in protective services | 349 | 0.5 | 0.6 | 1.0 | 0.5 |
| G61.626 Police Officers and Fire-fighters | 162 | 0.2 | 0.4 | 0.3 | 0.3 |
| G611.6261 Police Officers (Except Commissioned) | 99 | 0.2 | 0.4 | 0.3 | 0.3 |
| G612.6262 Fire-fighters | 64 | 0.3 | 0.3 | 0.3 | 0.3 |
| G62.646 Other Occupations in Protective Service | 132 | 0.4 | 0.6 | 0.9 | 0.5 |
| G621.6461 Sheriffs and Bailiffs | - | - | - | - | - |
| G622.6462 Correctional Service Officers | 40 | 0.3 | 0.5 | 0.4 | 0.4 |
| G623.6463 By-law Enforcement and Other Regulatory Officers n.e.c. | 14 | 0.7 | 0.7 | 1.9 | 0.8 |
| G624.6464 Other Ranks Armed Forces | 47 | 0.2 | 0.3 | 0.3 | 0.3 |
| G625.6465 Other Protective Service Occupations | 21 | 1.1 | 0.9 | 2.8 | 1.0 |
| G63.665 Security Guards and Related Occupations | 56 | 1.3 | 1.3 | 3.2 | 1.3 |
| G631.6651 Security Guards and Related Occupations | 55 | 1.3 | 1.4 | 3.3 | 1.4 |
| G7 Occupations in travel and accommodation including attendants in recreation and sport | 253 | 2.3 | 2.7 | 4.1 | 2.6 |
| G71.643 Occupations in Travel and Accommodation | 163 | 2.7 | 3.1 | 4.7 | 3.0 |

Selkirk College Region

Projected Annual Growth Rates in Occupational Demand

| | Estimated Employment | Average Annual % Change | | | Avg Annual % Chg Over 4 Years |
|--|-------------------------|-------------------------|------------------|------------------|----------------------------------|
| | <u>2005</u> | <u>2007/2005</u> | <u>2009/2007</u> | <u>2010/2009</u> | <u>2009/2005</u> |
| G711.6431 Travel Counsellors | - | - | - | - | - |
| G712.6432 Purser and Flight Attendants | 38 | 2.8 | 2.7 | 2.2 | 2.8 |
| G713.6433 Airline Sales and Service Agents | 31 | 2.7 | 2.6 | 2.1 | 2.8 |
| G714.6434 Ticket Agents, Cargo Service Representatives and Related Clerks (Except Airline) | - | - | - | - | - |
| G715.6435 Hotel Front Desk Clerks | 80 | 2.6 | 3.6 | 7.2 | 3.2 |
| G72.644 Tour and Recreational Guides and Casino Occupations | 45 | 1.7 | 1.8 | 2.2 | 1.8 |
| G721.6441 Tour and Travel Guides | 11 | 1.9 | 2.0 | 2.7 | 2.0 |
| G722.6442 Outdoor Sport and Recreational Guides | 13 | 2.0 | 2.2 | 3.6 | 2.1 |
| G723.6443 Casino Occupations | 21 | 1.5 | 1.4 | 1.0 | 1.5 |
| G73.667 Other Occupations in Travel, Accommodation, Amusement and Recreation | 45 | 1.9 | 2.2 | 3.4 | 2.1 |
| G731.6671 Operators and Attendants in Amusement, Recreation and Sport | 27 | 1.3 | 1.4 | 1.7 | 1.4 |
| G732.6672 Other Attendants in Accommodation and Travel | 18 | 2.7 | 3.3 | 5.8 | 3.1 |
| G8 Childcare and home support workers | 782 | 1.4 | 1.2 | 2.6 | 1.3 |
| G81.647 Childcare and Home Support Workers | 781 | 1.4 | 1.2 | 2.6 | 1.3 |
| G811.6471 Visiting Homemakers, Housekeepers & Related Occupations | 294 | 2.3 | 2.3 | 3.6 | 2.4 |
| G812.6472 Elementary and Secondary School Teacher Assistants | 237 | 0.1 | -0.6 | -0.7 | -0.2 |
| G814.6474 Babysitters, Nannies and Parents' Helpers | 251 | 1.6 | 1.6 | 4.2 | 1.7 |
| G9 Sales and service occupations n.e.c. | 2,597 | 1.8 | 2.0 | 5.1 | 1.9 |
| G91.627 Technical Occupations in Personal Service | 192 | 1.1 | 1.0 | 4.7 | 1.0 |
| G911.6271 Hairstylists and Barbers | 185 | 1.1 | 1.0 | 4.7 | 1.0 |
| G912.6272 Funeral Directors and Embalmers | - | - | - | - | - |
| G92.648 Other Occupations in Personal Service | 105 | 1.1 | 1.0 | 4.5 | 1.1 |
| G921.6481 Image, Social and Other Personal Consultants | - | - | - | - | - |
| G922.6482 Estheticians, Electrologists and Related Occupations | 60 | 1.1 | 1.0 | 4.7 | 1.0 |
| G923.6483 Pet Groomers and Animal Care Workers | 33 | 1.1 | 1.0 | 4.4 | 1.1 |
| G924.6484 Other Personal Service Occupations | - | - | - | - | - |
| G93.666 Cleaners | 661 | 1.7 | 2.0 | 3.6 | 1.9 |

Selkirk College Region

Projected Annual Growth Rates in Occupational Demand

| | Estimated Employment | Average Annual % Change | | | Avg Annual % Chg Over 4 Years |
|---|-------------------------|-------------------------|------------------|------------------|----------------------------------|
| | <u>2005</u> | <u>2007/2005</u> | <u>2009/2007</u> | <u>2010/2009</u> | <u>2009/2005</u> |
| G931.6661 Light Duty Cleaners | 281 | 2.3 | 2.9 | 5.4 | 2.7 |
| G932.6662 Specialized Cleaners | 60 | 1.4 | 1.8 | 3.2 | 1.6 |
| G933.6663 Janitors, Caretakers and Building Superintendents | 321 | 1.2 | 1.3 | 1.9 | 1.3 |
| G94.625 Butchers and Bakers | 169 | 1.9 | 1.2 | 4.6 | 1.6 |
| G941.6251 Butchers and Meat Cutters - Retail and Wholesale | 63 | 1.4 | 0.7 | 5.1 | 1.0 |
| G942.6252 Bakers | 106 | 2.2 | 1.6 | 4.3 | 1.9 |
| G96.664 Food Counter Attendants, Kitchen Helpers and Related Occupations | 826 | 2.5 | 3.3 | 6.6 | 3.0 |
| G961.6641 Food Counter Attendants, Kitchen Helpers and Related Occupations | 826 | 2.5 | 3.3 | 6.6 | 3.0 |
| G97.662 Other Sales and Related Occupations | 543 | 1.4 | 0.7 | 5.0 | 1.0 |
| G971.6621 Service Station Attendants | 85 | 1.3 | 0.6 | 5.1 | 1.0 |
| G972.6622 Grocery Clerks and Store Shelf Stockers | 338 | 1.3 | 0.6 | 5.2 | 1.0 |
| G973.6623 Other Elemental Sales Occupations | 118 | 1.4 | 1.0 | 4.6 | 1.2 |
| G98.668 Other Elemental Service Occupations | 103 | 1.5 | 1.6 | 4.4 | 1.6 |
| G981.6681 Dry Cleaning and Laundry Occupations | 52 | 1.7 | 1.8 | 4.6 | 1.8 |
| G982.6682 Ironing, Pressing and Finishing Occupations | - | - | - | - | - |
| G983.6683 Other Elemental Service Occupations | 42 | 1.4 | 1.4 | 4.1 | 1.4 |
| H Trades, transport and equipment operators and related occupations | 6,302 | 1.7 | 4.0 | -1.3 | 2.9 |
| H0 Contractors and supervisors in trades and transportation | 360 | 2.3 | 5.6 | -3.2 | 4.1 |
| H01.721 Contractors and Supervisors, Trades and Related Workers | 347 | 2.3 | 5.8 | -3.4 | 4.2 |
| H011.7211 Supervisors, Machinists and Related Occupations | 13 | 0.8 | 0.9 | 1.9 | 0.8 |
| H012.7212 Contractors and Supervisors, Electrical Trades and Telecommunications Occupations | 36 | 2.3 | 5.9 | -3.6 | 4.3 |
| H013.7213 Contractors and Supervisors, Pipefitting Trades | 21 | 2.4 | 5.9 | -4.1 | 4.3 |
| H014.7214 Contractors and Supervisors, Metal Forming, Shaping and Erecting Trades | 32 | 1.3 | 2.7 | -0.8 | 2.0 |
| H015.7215 Contractors and Supervisors, Carpentry Trades | 52 | 2.8 | 7.5 | -5.1 | 5.3 |
| H016.7216 Contractors and Supervisors, Mechanic Trades | 33 | 1.5 | 2.3 | 1.9 | 1.9 |

Selkirk College Region

Projected Annual Growth Rates in Occupational Demand

| | Estimated Employment | Average Annual % Change | | | Avg Annual % Chg Over 4 Years |
|--|-------------------------|-------------------------|------------------|------------------|----------------------------------|
| | <u>2005</u> | <u>2007/2005</u> | <u>2009/2007</u> | <u>2010/2009</u> | <u>2009/2005</u> |
| H017.7217 Contractors and Supervisors, Heavy Construction Equipment Crews | 80 | 2.7 | 6.6 | -4.3 | 4.8 |
| H018.7218 Supervisors, Printing and Related Occupations | - | - | - | - | - |
| H019.7219 Contractors and Supervisors, Other Construction Trades, Installers, Repairers and Servicers | 74 | 2.9 | 7.6 | -5.4 | 5.4 |
| H02.722 Supervisors, Railway and Motor Transportation Occupations | 14 | 1.5 | 1.9 | 1.5 | 1.7 |
| H021.7221 Supervisors, Railway Transport Operations | - | - | - | - | - |
| H022.7222 Supervisors, Motor Transport & Other Ground Transit Operators | 12 | 0.6 | 1.5 | 1.4 | 1.1 |
| H1 Construction trades | 1,564 | 2.7 | 7.0 | -4.7 | 5.0 |
| H11.725 Plumbers, Pipefitters and Gas Fitters | 254 | 2.4 | 6.0 | -4.1 | 4.3 |
| H111.7251 Plumbers | 143 | 2.7 | 7.2 | -5.1 | 5.2 |
| H112.7252 Steamfitters, Pipefitters and Sprinkler System Installers | 83 | 1.9 | 4.2 | -2.6 | 3.1 |
| H113.7253 Gas Fitters | 27 | 2.2 | 5.2 | -3.1 | 3.8 |
| H12.727 Carpenters and Cabinetmakers | 648 | 2.6 | 6.9 | -4.5 | 4.9 |
| H121.7271 Carpenters | 601 | 2.7 | 7.1 | -4.9 | 5.1 |
| H122.7272 Cabinetmakers | 47 | 1.6 | 3.8 | 1.6 | 2.7 |
| H13.728 Masonry and Plastering Trades | 251 | 2.8 | 7.5 | -5.4 | 5.4 |
| H131.7281 Bricklayers | 42 | 2.7 | 7.2 | -5.2 | 5.2 |
| H132.7282 Concrete Finishers | 43 | 2.6 | 6.8 | -4.8 | 4.9 |
| H133.7283 Tilesetters | 33 | 2.9 | 7.9 | -5.7 | 5.6 |
| H134.7284 Plasterers, Drywall Installers and Finishers and Lathers | 134 | 2.9 | 7.7 | -5.6 | 5.5 |
| H14.729 Other Construction Trades | 413 | 2.8 | 7.3 | -5.0 | 5.2 |
| H141.7291 Roofers and Shinglers | 85 | 2.8 | 7.5 | -5.4 | 5.4 |
| H142.7292 Glaziers | 36 | 2.4 | 5.8 | -2.8 | 4.2 |
| H143.7293 Insulators | 26 | 2.9 | 7.4 | -5.3 | 5.3 |
| H144.7294 Painters and Decorators | 198 | 2.8 | 7.4 | -5.2 | 5.3 |
| H145.7295 Floor Covering Installers | 69 | 2.8 | 7.4 | -5.1 | 5.3 |
| H2 Stationary engineers, power station operators and electrical trades and telecommunications occupations | 524 | 1.9 | 4.1 | -2.0 | 3.1 |

Selkirk College Region

Projected Annual Growth Rates in Occupational Demand

| | Estimated Employment | Average Annual % Change | | | Avg Annual % Chg Over 4 Years |
|--|-------------------------|-------------------------|------------------|------------------|----------------------------------|
| | <u>2005</u> | <u>2007/2005</u> | <u>2009/2007</u> | <u>2010/2009</u> | <u>2009/2005</u> |
| H21.724 Electrical Trades and Telecommunications Occupations | 456 | 2.0 | 4.6 | -2.4 | 3.4 |
| H211.7241 Electricians (Except Industrial and Power System) | 230 | 2.6 | 6.7 | -4.6 | 4.8 |
| H212.7242 Industrial Electricians | 104 | 1.4 | 2.5 | 0.4 | 2.0 |
| H213.7243 Power System Electricians | 16 | 1.2 | 1.6 | -0.3 | 1.4 |
| H214.7244 Electrical Power Line and Cable Workers | 33 | 1.3 | 2.0 | -0.5 | 1.7 |
| H215.7245 Telecommunications Line and Cable Workers | 22 | 1.9 | 3.7 | -1.6 | 2.9 |
| H216.7246 Telecommunications Installation and Repair Workers | 37 | 1.5 | 2.1 | 0.6 | 1.9 |
| H217.7247 Cable Television Service and Maintenance Technicians | 12 | 2.0 | 3.7 | -1.3 | 2.9 |
| H22.735 Stationary Engineers and Power Station and System Operators | 67 | 1.1 | 0.9 | 1.3 | 1.0 |
| H221.7351 Stationary Engineers and Auxiliary Equipment Operators | 53 | 1.2 | 0.9 | 1.3 | 1.1 |
| H222.7352 Power Systems and Power Station Operators | 14 | 0.9 | 0.8 | 1.0 | 0.9 |
| H3 Machinists, metal forming, shaping and erecting occupations | 468 | 1.3 | 2.6 | 0.4 | 2.0 |
| H31.723 Machinists and Related Occupations | 80 | 0.8 | 1.1 | 3.4 | 1.0 |
| H311.7231 Machinists and Machining and Tooling Inspectors | 72 | 0.8 | 1.1 | 3.4 | 1.0 |
| H312.7232 Tool and Die Makers | - | - | - | - | - |
| H32.726 Metal Forming, Shaping and Erecting Trades | 386 | 1.4 | 3.0 | -0.2 | 2.2 |
| H321.7261 Sheet Metal Workers | 50 | 2.3 | 6.0 | -3.0 | 4.3 |
| H322.7262 Boilermakers | - | - | - | - | - |
| H323.7263 Structural Metal and Platework Fabricators and Fitters | 47 | 0.8 | 1.3 | 2.5 | 1.0 |
| H324.7264 Ironworkers | 41 | 2.1 | 5.2 | -3.2 | 3.7 |
| H325.7266 Blacksmiths and Die Setters | - | - | - | - | - |
| H326.7265 Welders and Related Machine Operators | 240 | 1.2 | 2.2 | 0.4 | 1.7 |
| H4 Mechanics | 916 | 1.2 | 1.6 | 2.4 | 1.4 |
| H41.731 Machinery and Transportation Equipment Mechanics (Except Motor Vehicle) | 517 | 1.3 | 1.9 | 1.1 | 1.6 |
| H411.7311 Construction Millwrights and Industrial Mechanics (Except Textile) | 247 | 0.9 | 1.2 | 2.0 | 1.1 |
| H412.7312 Heavy-Duty Equipment Mechanics | 162 | 1.2 | 1.5 | 1.1 | 1.4 |
| H413.7313 Refrigeration and Air Conditioning Mechanics | 37 | 2.2 | 5.5 | -3.1 | 3.9 |
| H414.7314 Railway Carmen/women | - | - | - | - | - |

Selkirk College Region

Projected Annual Growth Rates in Occupational Demand

| | Estimated Employment | Average Annual % Change | | | Avg Annual % Chg Over 4 Years |
|--|-------------------------|-------------------------|------------------|------------------|----------------------------------|
| | <u>2005</u> | <u>2007/2005</u> | <u>2009/2007</u> | <u>2010/2009</u> | <u>2009/2005</u> |
| H415.7315 Aircraft Mechanics and Aircraft Inspectors | 39 | 2.2 | 2.1 | 2.2 | 2.2 |
| H416.7316 Machine Fitters | 13 | 0.8 | 1.0 | 2.6 | 0.9 |
| H417.7317 Textile Machinery Mechanics and Repairers | 0 | - | - | - | - |
| H418.7318 Elevator Constructors and Mechanics | 16 | 2.9 | 7.8 | -5.6 | 5.6 |
| H42.732 Automotive service technicians | 346 | 1.1 | 1.0 | 4.3 | 1.1 |
| H421.7321 Automotive Service Technicians, Truck Mechanics and Mechanical Repairers | 259 | 1.1 | 1.0 | 4.3 | 1.1 |
| H422.7322 Motor Vehicle Body Repairers | 83 | 1.1 | 1.0 | 4.7 | 1.1 |
| H43.733 Other Mechanics | 56 | 1.3 | 1.8 | 3.3 | 1.6 |
| H431.7331 Oil and Solid Fuel Heating Mechanics | - | - | - | - | - |
| H432.7332 Electric Appliance Servicers and Repairers | 27 | 1.2 | 1.5 | 3.3 | 1.4 |
| H433.7333 Electrical Mechanics | - | - | - | - | - |
| H434.7334 Motorcycle and Other Related Mechanics | - | - | - | - | - |
| H435.7335 Other Small Engine and Equipment Mechanics | 12 | 1.3 | 1.3 | 4.6 | 1.3 |
| H5 Other trades n.e.c. | 306 | 1.5 | 2.7 | 1.9 | 2.1 |
| H51.734 Upholsterers, Tailors, Shoe Repairers, Jewellers and Related Occupations | 62 | 1.1 | 1.3 | 5.3 | 1.2 |
| H511.7341 Upholsterers | 12 | 1.1 | 1.2 | 5.1 | 1.2 |
| H512.7342 Tailors, Dressmakers, Furriers and Milliners | 38 | 1.1 | 1.4 | 5.5 | 1.3 |
| H513.7343 Shoe Repairers and Shoemakers | - | - | - | - | - |
| H514.7344 Jewellers, Watch Repairers and Related Occupations | - | - | - | - | - |
| H52.738 Printing Press Operators, Commercial Divers and Other Trades and Related Occupations n.e.c. | 73 | 0.8 | 1.4 | 4.5 | 1.1 |
| H521.7381 Printing Press Operators | 24 | 1.1 | 1.7 | 5.1 | 1.4 |
| H522.7382 Commercial Divers | - | - | - | - | - |
| H523.7383 Other Trades and Related Occupations | 48 | 0.7 | 1.2 | 4.2 | 1.0 |
| H53.744 Other installers, repairers and servicers | 171 | 1.9 | 3.8 | -0.3 | 2.9 |
| H531.7441 Residential and Commercial Installers and Servicers | 78 | 2.6 | 6.9 | -4.2 | 4.9 |
| H532.7442 Waterworks and Gas Maintenance Workers | 21 | 1.0 | 1.0 | 0.3 | 1.0 |
| H533.7443 Automotive Mechanical Installers and Servicers | 35 | 1.2 | 0.9 | 4.0 | 1.0 |

Selkirk College Region

Projected Annual Growth Rates in Occupational Demand

| | Estimated Employment | Average Annual % Change | | | Avg Annual % Chg Over 4 Years |
|---|-------------------------|-------------------------|------------------|------------------|----------------------------------|
| | <u>2005</u> | <u>2007/2005</u> | <u>2009/2007</u> | <u>2010/2009</u> | <u>2009/2005</u> |
| H534.7444 Pest Controllers and Fumigators | - | - | - | - | - |
| H535.7445 Other Repairers and Servicers | 37 | 1.3 | 1.3 | 4.3 | 1.3 |
| H6 Heavy equipment and crane operators including drillers | 385 | 2.0 | 4.5 | -2.8 | 3.3 |
| H61.742 Heavy Equipment Operators | 294 | 2.2 | 4.9 | -3.1 | 3.7 |
| H611.7421 Heavy Equipment Operators (Except Crane) | 275 | 2.2 | 5.1 | -3.2 | 3.7 |
| H612.7422 Public Works Maintenance Equipment Operators | 19 | 1.6 | 3.1 | -1.1 | 2.4 |
| H62.737 Crane Operators, Drillers and Blasters | 93 | 1.4 | 3.1 | -1.8 | 2.3 |
| H621.7371 Crane Operators | 69 | 1.1 | 2.3 | -1.0 | 1.7 |
| H622.7372 Drillers and Blasters - Surface Mining Quarrying and Construction | 18 | 2.3 | 4.9 | -3.6 | 3.8 |
| H623.7373 Water Well Drillers | - | - | - | - | - |
| H7 Transportation equipment operators and related workers, excluding labourers | 969 | 0.5 | 1.7 | 1.4 | 1.2 |
| H71.741 Motor Vehicle and Transit Drivers | 894 | 0.3 | 1.7 | 1.4 | 1.0 |
| H711.7411 Truck Drivers | 614 | -0.3 | 1.5 | 0.6 | 0.6 |
| H712.7412 Bus Drivers and Subway and Other Transit Operators | 88 | 1.8 | 1.8 | 1.6 | 1.8 |
| H713.7413 Taxi and Limousine Drivers and Chauffeurs | 45 | 2.7 | 2.6 | 2.0 | 2.7 |
| H714.7414 Delivery and Courier Service Drivers | 148 | 1.4 | 2.0 | 4.2 | 1.7 |
| H72.736 Train Crew Operating Occupations | 13 | 4.5 | 2.7 | 1.7 | 3.7 |
| H721.7361 Railway and Yard Locomotive Engineers | - | - | - | - | - |
| H722.7362 Railway Conductors and Brakemen/women | - | - | - | - | - |
| H73.743 Other Transport Equipment Operators and Related Workers | 60 | 3.0 | 2.4 | 1.9 | 2.8 |
| H731.7431 Railway Yard Workers | - | - | - | - | - |
| H732.7432 Railway Track Maintenance Workers | - | - | - | - | - |
| H733.7433 Deck Crew Water Transport | 15 | 2.8 | 2.0 | 2.1 | 2.4 |
| H734.7434 Engine Room Crew, Water Transport | - | - | - | - | - |
| H735.7435 Lock and Cable Ferry Operators and Related Occupations | - | - | - | - | - |
| H736.7436 Boat Operators | - | - | - | - | - |
| H737.7437 Air Transport Ramp Attendants | 19 | 2.7 | 2.5 | 2.1 | 2.7 |

Selkirk College Region

Projected Annual Growth Rates in Occupational Demand

| | Estimated Employment | Average Annual % Change | | | Avg Annual % Chg Over 4 Years |
|---|-------------------------|-------------------------|------------------|------------------|----------------------------------|
| | <u>2005</u> | <u>2007/2005</u> | <u>2009/2007</u> | <u>2010/2009</u> | <u>2009/2005</u> |
| H8 Trades helpers, construction and transportation labourers and related occupations | 808 | 1.8 | 4.0 | -1.0 | 3.0 |
| H81.745 Longshore Workers and Material Handlers | 389 | 0.9 | 1.3 | 2.9 | 1.1 |
| H811.7451 Longshore Workers | 33 | 2.1 | 2.2 | 2.4 | 2.2 |
| H812.7452 Material Handlers | 356 | 0.8 | 1.2 | 3.0 | 1.0 |
| H82.761 Trades Helpers and Labourers | 375 | 2.7 | 6.9 | -4.6 | 5.0 |
| H821.7611 Construction Trades Helpers and Labourers | 347 | 2.8 | 7.3 | -5.0 | 5.3 |
| H822.7612 Other Trades Helpers and Labourers | 28 | 1.2 | 2.2 | 0.7 | 1.7 |
| H83.762 Public Works and Other Labourers n.e.c. | 44 | 1.2 | 2.5 | -0.5 | 1.8 |
| H831.7621 Public Works and Maintenance Labourers | 35 | 1.3 | 2.5 | -0.7 | 1.9 |
| H832.7622 Railway and Motor Transport Labourers | - | - | - | - | - |
| I Occupations unique to primary industry | 1,606 | 1.2 | 0.4 | 2.4 | 0.8 |
| I0 Occupations unique to agriculture, excluding labourers | 836 | 0.9 | 0.5 | 4.1 | 0.7 |
| I01.825 Contractors, Operators and Supervisors in Agriculture, Horticulture and Aquaculture | 458 | 0.9 | 0.5 | 4.0 | 0.7 |
| I011.8251 Farmers and Farm Managers | 358 | 0.9 | 0.4 | 4.3 | 0.6 |
| I012.8252 Agricultural and Related Service Contractors and Managers | - | - | - | - | - |
| I013.8253 Farm Supervisors and Specialized Livestock Workers | 26 | 0.9 | 0.6 | 3.7 | 0.8 |
| I014.8254 Nursery and Greenhouse Operators and Managers | 28 | 1.0 | 0.3 | 3.7 | 0.7 |
| I015.8255 Landscaping & Grounds Maintenance Contractors & Managers | - | - | - | - | - |
| I016.8256 Supervisors, Landscape and Horticulture | 16 | 1.0 | 1.0 | 1.9 | 1.0 |
| I017.8257 Aquaculture Operators and Managers | 15 | 0.8 | 0.4 | 3.9 | 0.6 |
| I02.843 Agriculture and Horticulture Workers | 378 | 0.9 | 0.4 | 4.2 | 0.7 |
| I021.8431 General Farm Workers | 259 | 0.9 | 0.4 | 4.3 | 0.7 |
| I022.8432 Nursery and Greenhouse Workers | 120 | 0.9 | 0.4 | 4.0 | 0.7 |
| I1 Occupations unique to forestry operations, mining, oil and gas extraction and fishing excluding labourers | 424 | 1.6 | 0.2 | 0.1 | 0.9 |
| I11.821 Supervisors, Logging and Forestry | 65 | 1.4 | 0.1 | 0.7 | 0.7 |
| I111.8211 Supervisors, Logging and Forestry | 64 | 1.4 | 0.1 | 0.6 | 0.7 |
| I12.822 Supervisors, Mining, Oil and Gas | 22 | 1.5 | 1.2 | 0.3 | 1.4 |

Selkirk College Region

Projected Annual Growth Rates in Occupational Demand

| | Estimated Employment | Average Annual % Change | | | Avg Annual % Chg Over 4 Years |
|--|-------------------------|-------------------------|------------------|------------------|----------------------------------|
| | <u>2005</u> | <u>2007/2005</u> | <u>2009/2007</u> | <u>2010/2009</u> | <u>2009/2005</u> |
| I121.8221 Supervisors, Mining and Quarrying | 14 | 0.7 | 0.6 | 1.4 | 0.7 |
| I122.8222 Supervisors, Oil and Gas Drilling and Service | - | - | - | - | - |
| I13.823 Underground Miners, Oil and Gas Drillers and Related Workers | 20 | 1.4 | 1.0 | 0.6 | 1.2 |
| I131.8231 Underground Production and Development Miners | 14 | 0.9 | 0.7 | 1.4 | 0.8 |
| I132.8232 Oil and Gas Well Drillers, Servicers, Testers and Related Workers | - | - | - | - | - |
| I14.841 Mine Service Workers and Operators in Oil and Gas Drilling | 17 | 2.0 | 1.9 | -1.0 | 2.0 |
| I141.8411 Underground Mine Service and Support Workers | - | - | - | - | - |
| I142.8412 Oil and Gas Well Drilling Workers and Services Operators | - | - | - | - | - |
| I15.824 Logging Machinery Operators | 112 | 1.5 | 0.1 | 0.2 | 0.8 |
| I151.8241 Logging Machinery Operators | 112 | 1.5 | 0.1 | 0.2 | 0.8 |
| I16.842 Logging and Forestry Workers | 179 | 1.7 | -0.2 | -0.5 | 0.7 |
| I161.8421 Chain-saw and Skidder Operators | 118 | 1.7 | -0.2 | -0.5 | 0.7 |
| I162.8422 Silviculture and Forestry Workers | 62 | 1.6 | -0.1 | -0.4 | 0.7 |
| I17.826 Fishing Vessel Masters and Skippers and Fishermen/women | - | - | - | - | - |
| I171.8261 Fishing Masters and Officers | - | - | - | - | - |
| I172.8262 Fishing Vessel Skippers and Fishermen/women | - | - | - | - | - |
| I18.844 Other Fishing and Trapping Occupations | - | - | - | - | - |
| I181.8441 Fishing Vessel Deckhands | - | - | - | - | - |
| I182.8442 Trappers and Hunters | 0 | - | - | - | - |
| I2 Primary production labourers | 348 | 1.4 | 0.6 | 1.2 | 1.0 |
| I21.861 Primary Production Labourers | 348 | 1.4 | 0.6 | 1.2 | 1.0 |
| I211.8611 Harvesting Labourers | 40 | 0.9 | 0.4 | 4.2 | 0.6 |
| I212.8612 Landscaping and Grounds Maintenance Labourers | 86 | 1.3 | 1.7 | 1.6 | 1.5 |
| I213.8613 Aquaculture and Marine Harvest Labourers | 17 | 0.9 | 0.5 | 4.3 | 0.7 |
| I214.8614 Mine Labourers | 13 | 0.8 | 0.8 | 0.6 | 0.8 |
| I215.8615 Oil and Gas Drilling, Servicing and Related Labourers | 13 | 2.7 | 2.3 | -1.7 | 2.5 |
| I216.8616 Logging and Forestry Labourers | 176 | 1.5 | -0.1 | 0.2 | 0.7 |
| J Occupations unique to processing, manufacturing and utilities | 2,413 | 0.8 | 1.0 | 3.0 | 0.9 |
| J0 Supervisors in manufacturing | 237 | 0.8 | 0.9 | 2.4 | 0.8 |

Selkirk College Region

Projected Annual Growth Rates in Occupational Demand

| | Estimated Employment | Average Annual % Change | | | Avg Annual % Chg Over 4 Years |
|---|-------------------------|-------------------------|------------------|------------------|----------------------------------|
| | <u>2005</u> | <u>2007/2005</u> | <u>2009/2007</u> | <u>2010/2009</u> | <u>2009/2005</u> |
| J01.921 Supervisors, Processing Occupations | 199 | 0.8 | 0.8 | 2.3 | 0.8 |
| J011.9211 Supervisors, Mineral and Metal Processing | 74 | 0.5 | 0.4 | 0.4 | 0.5 |
| J012.9212 Supervisors, Petroleum, Gas and Chemical Processing and Utilities | 21 | 1.0 | 0.7 | 0.0 | 0.9 |
| J013.9213 Supervisors, Food, Beverage and Tobacco Processing | 12 | 2.6 | 1.6 | 1.9 | 2.2 |
| J014.9214 Supervisors, Plastic and Rubber Products Manufacturing | - | - | - | - | - |
| J015.9215 Supervisors, Forest Products Processing | 90 | 0.7 | 0.9 | 4.4 | 0.8 |
| J016.9216 Supervisors, Textile Processing | - | - | - | - | - |
| J02.922 Supervisors, Assembly and Fabrication | 36 | 0.9 | 1.5 | 3.5 | 1.2 |
| J021.9221 Supervisors, Motor Vehicle Assembling | - | - | - | - | - |
| J022.9222 Supervisors, Electronics Manufacturing | - | - | - | - | - |
| J023.9223 Supervisors, Electrical Products Manufacturing | - | - | - | - | - |
| J024.9224 Supervisors, Furniture and Fixtures Manufacturing | - | - | - | - | - |
| J025.9225 Supervisors, Fabric, Fur and Leather Products Manufacturing | - | - | - | - | - |
| J026.9226 Supervisors, Other Mechanical and Metal Products Manufacturing | - | - | - | - | - |
| J027.9227 Supervisors, Other Products Manufacturing and Assembly | 13 | 0.8 | 1.3 | 2.1 | 1.1 |
| J1 Machine operators in manufacturing | 1,113 | 0.8 | 0.9 | 2.8 | 0.9 |
| J11.923 Central Control and Process Operators in Manufacturing and Processing | 110 | 1.1 | 0.7 | 0.0 | 0.9 |
| J111.9231 Central Control & Process Operators Mineral & Metal Processing | 76 | 0.5 | 0.2 | 0.2 | 0.4 |
| J112.9232 Petroleum, Gas and Chemical Process Operators | 15 | 2.8 | 2.1 | -2.0 | 2.5 |
| J113.9233 Pulping Control Operators | - | - | - | - | - |
| J114.9234 Papermaking and Coating Control Operators | 12 | 2.2 | 1.2 | 0.8 | 1.7 |
| J12.941 Machine Operators and Related Workers in Metal and Mineral Products Processing | 249 | 0.6 | 0.5 | 0.5 | 0.5 |
| J121.9411 Machine Operators, Mineral and Metal Processing | 123 | 0.5 | 0.3 | 0.3 | 0.4 |
| J122.9412 Foundry Workers | 97 | 0.5 | 0.2 | 0.2 | 0.4 |

Selkirk College Region

Projected Annual Growth Rates in Occupational Demand

| | Estimated Employment | Average Annual % Change | | | Avg Annual % Chg Over 4 Years |
|---|-------------------------|-------------------------|------------------|------------------|----------------------------------|
| | <u>2005</u> | <u>2007/2005</u> | <u>2009/2007</u> | <u>2010/2009</u> | <u>2009/2005</u> |
| J123.9413 Glass Forming and Finishing Machine Operators and Glass Cutters | - | - | - | - | - |
| J124.9414 Concrete, Clay and Stone Forming Operators | 13 | 1.8 | 4.3 | 0.5 | 3.2 |
| J125.9415 Inspectors and Testers, Mineral and Metal Processing | - | - | - | - | - |
| J13.942 Machine Operators and Related Workers in Chemical, Plastic and Rubber Processing | 36 | 0.8 | 0.7 | 1.1 | 0.8 |
| J131.9421 Chemical Plant Machine Operators | 16 | 0.7 | 0.4 | 0.7 | 0.6 |
| J132.9422 Plastics Processing Machine Operators | - | - | - | - | - |
| J133.9423 Rubber Processing Machine Operators and Related Workers | - | - | - | - | - |
| J134.9424 Water and Waste Plant Operators | 16 | 0.9 | 0.7 | 0.9 | 0.8 |
| J14.943 Machine Operators and Related Workers in Pulp and Paper Production and Wood Processing | 437 | 0.6 | 0.9 | 4.5 | 0.8 |
| J141.9431 Sawmill Machine Operators | 216 | 0.4 | 0.9 | 5.0 | 0.6 |
| J142.9432 Pulp Mill Machine Operators | 21 | 2.2 | 1.2 | 0.6 | 1.8 |
| J143.9433 Papermaking and Finishing Machine Operators | 14 | 2.0 | 1.4 | 1.0 | 1.7 |
| J144.9434 Other Wood Processing Machine Operators | 55 | 0.6 | 1.0 | 4.4 | 0.8 |
| J145.9435 Paper Converting Machine Operators | - | - | - | - | - |
| J146.9436 Lumber Graders and Other Wood Processing Inspectors and Graders | 121 | 0.4 | 0.8 | 4.9 | 0.6 |
| J15.944 Machine Operators and Related Workers in Textile Processing | - | - | - | - | - |
| J151.9441 Textile Fibre and Yarn Preparation Machine Operators | - | - | - | - | - |
| J152.9442 Weavers, Knitters and Other Fabric-Making Occupations | - | - | - | - | - |
| J153.9443 Textile Dyeing and Finishing Machine Operators | - | - | - | - | - |
| J154.9444 Textile Inspectors, Graders and Samplers | - | - | - | - | - |
| J16.945 Machine Operators and Related Workers in Fabric, Fur and Leather Products Manufacturing | 50 | 1.1 | 1.6 | 6.4 | 1.4 |
| J161.9451 Sewing Machine Operators | 44 | 1.1 | 1.7 | 6.4 | 1.4 |
| J162.9452 Fabric, Fur and Leather Cutters | - | - | - | - | - |
| J163.9453 Hide and Pelt Processing Workers | 0 | - | - | - | - |

Selkirk College Region

Projected Annual Growth Rates in Occupational Demand

| | Estimated Employment | Average Annual % Change | | | Avg Annual % Chg Over 4 Years |
|---|-------------------------|-------------------------|------------------|------------------|----------------------------------|
| | <u>2005</u> | <u>2007/2005</u> | <u>2009/2007</u> | <u>2010/2009</u> | <u>2009/2005</u> |
| J164.9454 Inspectors and Testers, Fabric, Fur and Leather Products Manufacturing | - | - | - | - | - |
| J17.946 Machine Operators and Related Workers in Food, Beverage and Tobacco Processing | 53 | 2.9 | 1.6 | 1.7 | 2.3 |
| J171.9461 Process Control and Machine Operators, Food and Beverage Processing | 30 | 2.9 | 1.6 | 1.7 | 2.3 |
| J172.9462 Industrial Butchers and Meat Cutters, Poultry Preparers and Related Workers | 17 | 3.1 | 1.6 | 1.3 | 2.4 |
| J173.9463 Fish Plant Workers | - | - | - | - | - |
| J174.9464 Tobacco Processing Machine Operators | 0 | - | - | - | - |
| J175.9465 Testers and Graders, Food and Beverage Processing | - | - | - | - | - |
| J18.947 Printing Machine Operators and Related Occupations | 58 | 1.1 | 1.2 | 5.0 | 1.2 |
| J181.9471 Printing Machine Operators | 14 | 1.0 | 1.5 | 5.5 | 1.2 |
| J182.9472 Camera, Platemaking and Other Pre-Press Occupations | - | - | - | - | - |
| J183.9473 Binding and Finishing Machine Operators | - | - | - | - | - |
| J184.9474 Photographic and Film Processors | 31 | 1.2 | 0.9 | 4.6 | 1.1 |
| J19.951 Machining, Metalworking, Woodworking and Related Machine Operators | 106 | 0.6 | 0.8 | 2.4 | 0.7 |
| J191.9511 Machining Tool Operators | 12 | 0.8 | 1.0 | 2.5 | 0.9 |
| J192.9512 Forging Machine Operators | - | - | - | - | - |
| J193.9513 Woodworking Machine Operators | 28 | 0.7 | 1.5 | 4.8 | 1.1 |
| J194.9514 Metalworking Machine Operators | 32 | 0.6 | 0.5 | 1.2 | 0.5 |
| J196.9516 Other Metal Products Machine Operators. | 26 | 0.6 | 0.4 | 0.6 | 0.5 |
| J197.9517 Other Products Machine Operators | - | - | - | - | - |
| J2 Assemblers in manufacturing | 216 | 1.1 | 1.9 | 4.1 | 1.5 |
| J21.948 Mechanical, Electrical and Electronics Assemblers | 64 | 1.1 | 1.7 | 4.7 | 1.4 |
| J211.9481 Aircraft Assemblers and Aircraft Assembly Inspectors | - | - | - | - | - |
| J212.9482 Motor Vehicle Assemblers, Inspectors and Testers | - | - | - | - | - |
| J213.9483 Electronics Assemblers, Fabricators, Inspectors and Testers | 19 | 0.9 | 1.6 | 5.4 | 1.3 |

Selkirk College Region

Projected Annual Growth Rates in Occupational Demand

| | Estimated Employment | Average Annual % Change | | | Avg Annual % Chg Over 4 Years |
|--|-------------------------|-------------------------|------------------|------------------|----------------------------------|
| | <u>2005</u> | <u>2007/2005</u> | <u>2009/2007</u> | <u>2010/2009</u> | <u>2009/2005</u> |
| J214.9484 Assemblers and Inspectors, Electrical Appliance, Apparatus and Equipment Manufacturing | - | - | - | - | - |
| J215.9485 Assemblers, Fabricators and Inspectors, Industrial Electrical Motors and Transformers | - | - | - | - | - |
| J216.9486 Mechanical Assemblers and Inspectors | 16 | 1.1 | 1.6 | 3.7 | 1.4 |
| J217.9487 Machine Operators and Inspectors, Electrical Apparatus Manufacturing | - | - | - | - | - |
| J22.949 Other Assembly and Related Occupations | 151 | 1.1 | 2.1 | 3.8 | 1.6 |
| J221.9491 Boat Assemblers and Inspectors | 18 | 1.0 | 1.6 | 5.2 | 1.4 |
| J222.9492 Furniture and Fixture Assemblers and Inspectors | 39 | 1.2 | 1.9 | 4.3 | 1.6 |
| J223.9493 Other Wood Products Assemblers and Inspectors | 39 | 0.8 | 1.8 | 3.6 | 1.3 |
| J224.9494 Furniture Finishers and Refinishers | - | - | - | - | - |
| J225.9495 Plastic Products Assemblers, Finishers and Inspectors | - | - | - | - | - |
| J226.9496 Painters and Coaters - Industrial | 28 | 1.6 | 3.2 | 0.9 | 2.5 |
| J227.9497 Plating, Metal Spraying and Related Operators | - | - | - | - | - |
| J228.9498 Other Assemblers and Inspectors | - | - | - | - | - |
| J3 Labourers in processing, manufacturing and utilities | 849 | 0.8 | 0.9 | 3.3 | 0.8 |
| J31.961 Labourers in Processing, Manufacturing and Utilities | 849 | 0.8 | 0.9 | 3.3 | 0.8 |
| J311.9611 Labourers in Mineral and Metal Processing | 154 | 0.5 | 0.3 | 0.3 | 0.4 |
| J312.9612 Labourers in Metal Fabrication | 53 | 0.7 | 0.9 | 1.3 | 0.8 |
| J313.9613 Labourers in Chemical Products Processing and Utilities | 30 | 0.6 | 0.4 | 0.2 | 0.5 |
| J314.9614 Labourers in Wood Pulp and Paper Processing | 472 | 0.6 | 0.9 | 4.7 | 0.7 |
| J315.9615 Labourers in Rubber and Plastic Products Manufacturing | - | - | - | - | - |
| J316.9616 Labourers in Textile Processing | - | - | - | - | - |
| J317.9617 Labourers in Food Beverage and Tobacco Processing | 83 | 2.6 | 1.5 | 2.1 | 2.1 |
| J318.9618 Labourers in Fish Processing | - | - | - | - | - |
| J319.9619 Other Labourers in Processing, Manufacturing and Utilities | 51 | 1.0 | 1.7 | 4.6 | 1.4 |

- suppressed due to small numbers