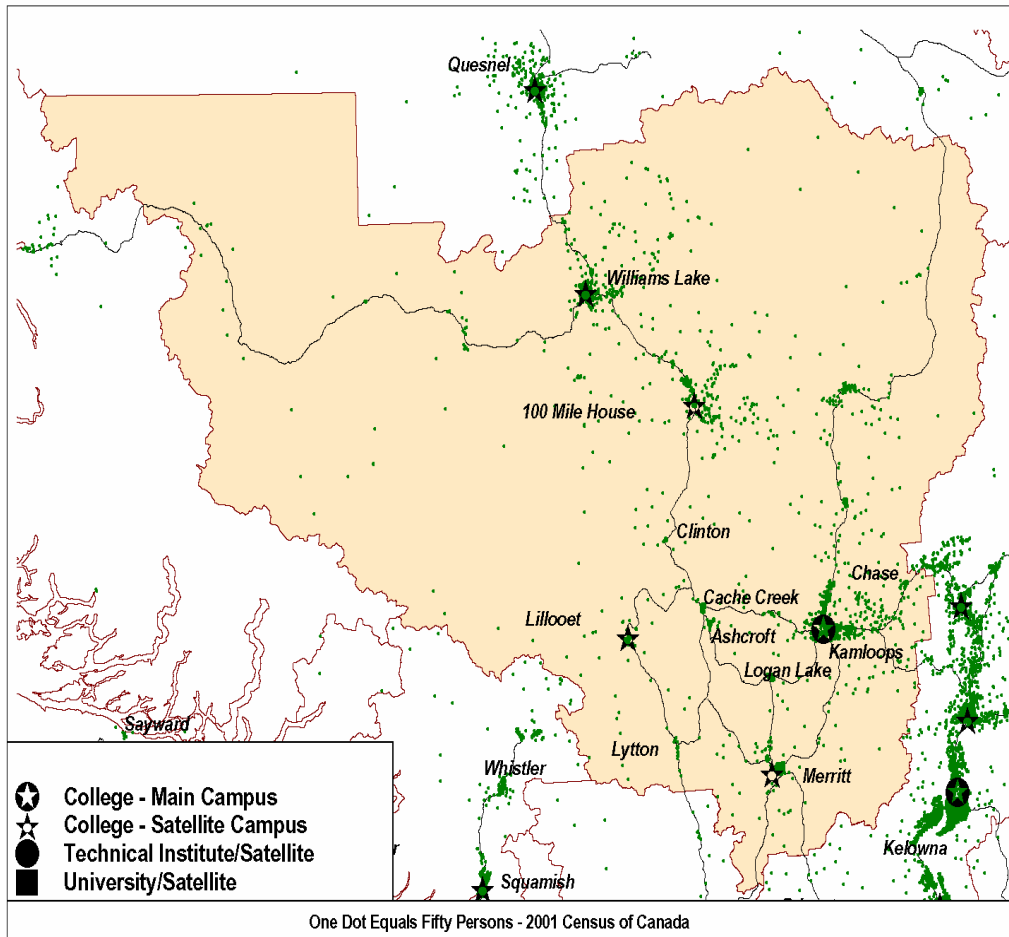


British Columbia: Regional Employment Projection Model

INDUSTRY AND OCCUPATION PROJECTIONS: 2006 -- 2010

THOMPSON RIVERS COLLEGE REGION



Background Information on Geographic Location of Population

Major Cities	Population <u>2005</u>	% of <u>Region</u>	Land <u>Area</u> <i>Sq Km</i>	Population <u>Density</u> <i>Persons per Sq Km</i>
Kamloops	82,714	46.5	297.6	278.0
Williams Lake	11,872	6.7	33.0	359.4
Merritt	7,561	4.3	24.9	303.7
Lillooet	2,755	1.5	27.2	101.4
Chase	2,568	1.4	3.1	842.0
Logan Lake	2,314	1.3	325.4	7.1
Ashcroft	1,836	1.0	8.0	230.7
100 Mile House	1,826	1.0	51.3	35.6
Cache Creek	1,134	0.6	10.6	107.3
Clinton	654	0.4	1.5	447.9
Lytton	334	0.2	6.7	49.8
Rest of Region	62,270	35.0	111,578.9	0.6
Total Region	177,838	100.0	112,368.0	1.6
Region as % of BC	4.2		12.1	
Youth Age 15-29	38,322			
Youth in Region as % of BC	4.5			

Note to Users

All assumptions relating to employment are based on past conditions, modified wherever possible to take into consideration future changes. Consequently, the resulting employment projections are not necessarily what will be, but rather what could be, given the realization of these conditions. It is certainly possible that unforeseen changes in factors such as economic development, government policy, land use and zoning will affect future employment. Consequently, the projections should only be regarded as one possible scenario on the future size and distribution of the workforce.

Regional Employment Projection Model (REPM)

BC STATS is grateful for the support and financial assistance from the Ministry of Advanced Education in developing the model.

Contents

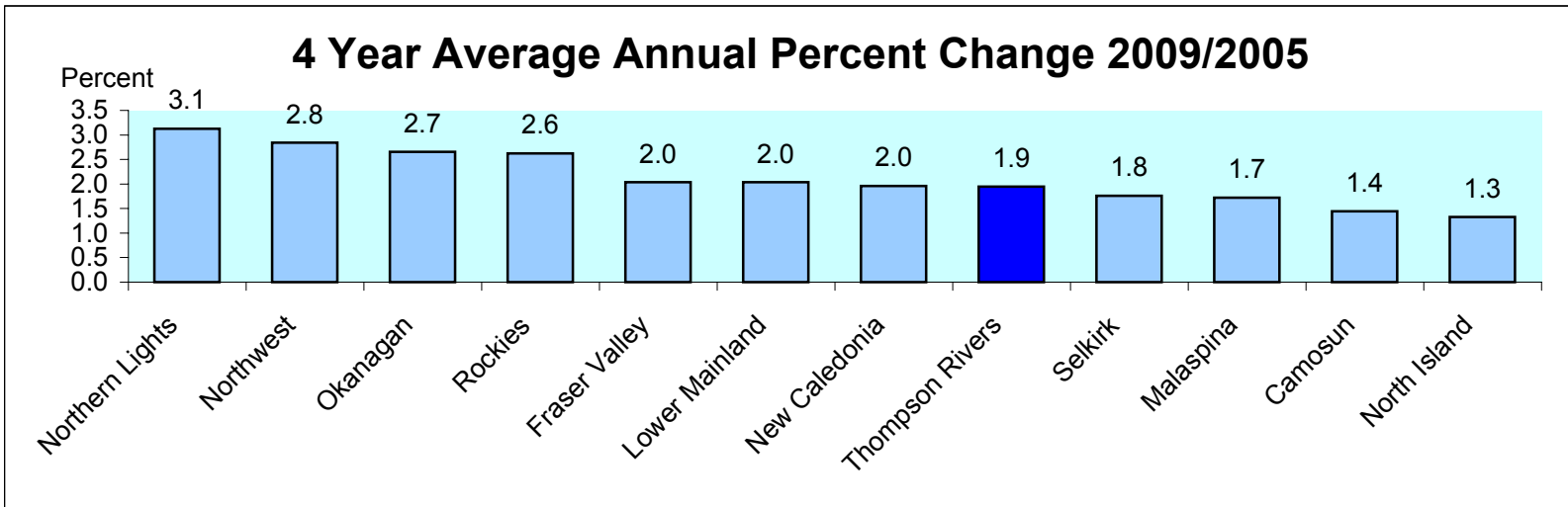
1. Projected Annual Growth in Employment Demand by College Region
2. Industrial Structure in the College Region Compared with BC, 2005 and 2009
3. Projected Annual Growth in Employment Demand by Industry
4. Occupational Structure in the College Region Compared with BC, 2005 and 2009
5. Projected Annual Growth Rates in Occupational Demand (1-digit)
6. Projected Annual Growth Rates in Occupational Demand (2-digits)

Appendices

1. Methodology
2. COPS Industry Conversion to REPM
3. Regional District to College Region Conversion for REPM
4. Projected Annual Growth Rates in Occupational Demand (3-digit)
5. Projected Annual Growth Rates in Occupational Demand (4-digit)

Projected Annual Growth in Employment Demand by College Region

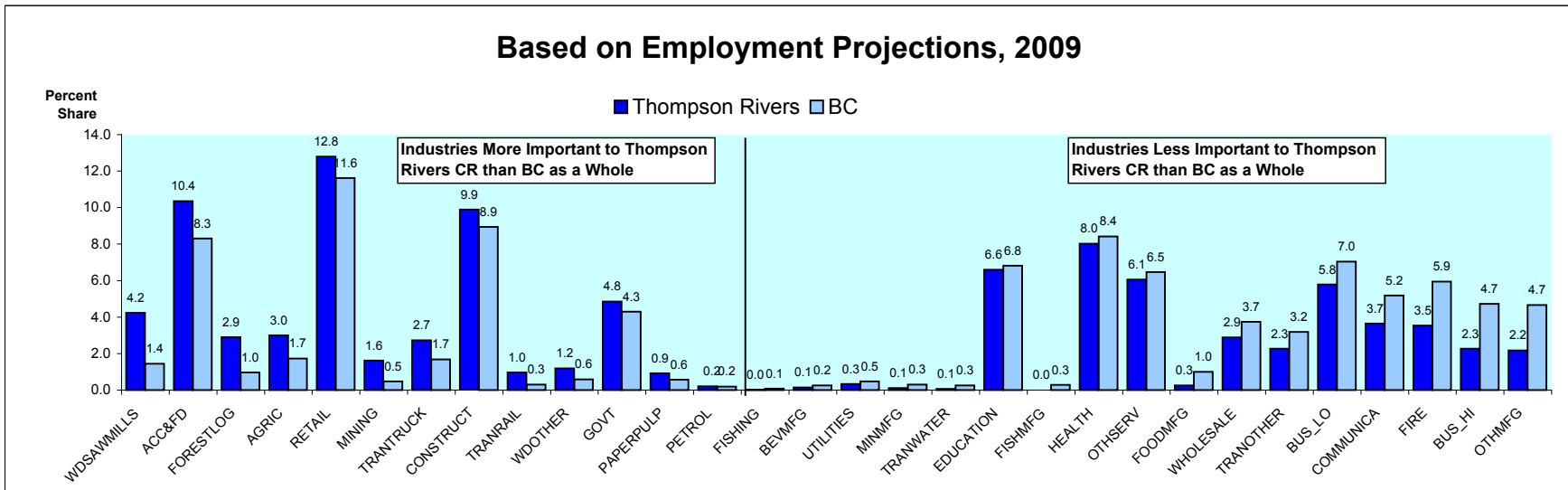
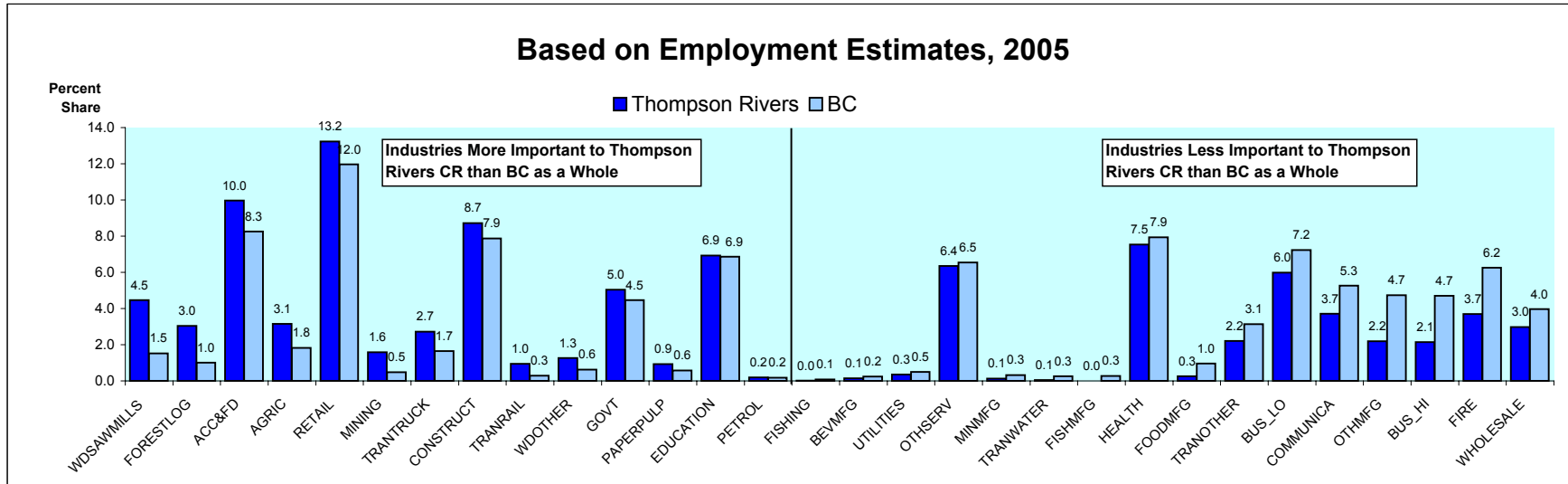
	Estimated Employment	Projected Employment Levels		Average Annual % Chg			Avg Annual % Chg Over 4 Years
	<u>2005</u>	<u>2009</u>	<u>2010</u>	<u>2007/2005</u>	<u>2009/2007</u>	<u>2010/2009</u>	<u>2009/2005</u>
Northern Lights	34,708	39,046	39,220	3.1	2.9	0.4	3.1
Northwest	34,597	38,531	39,845	2.3	3.2	3.4	2.8
Okanagan	175,281	193,888	201,600	2.3	2.9	4.0	2.7
Rockies	37,929	41,910	43,335	2.3	2.8	3.4	2.6
Fraser Valley	120,271	130,067	133,725	1.8	2.2	2.8	2.0
Lower Mainland	1,182,258	1,278,495	1,327,306	2.1	1.9	3.8	2.0
New Caledonia	75,311	81,207	83,482	1.8	2.0	2.8	2.0
Thompson Rivers	85,651	92,310	94,914	1.8	2.0	2.8	1.9
Selkirk	36,829	39,421	40,304	1.5	2.0	2.2	1.8
Malaspina	109,580	117,129	120,067	1.4	2.0	2.5	1.7
Camosun	167,460	177,149	181,894	1.3	1.6	2.7	1.4
North Island	70,227	73,956	75,509	1.2	1.4	2.1	1.3
Total	2,130,101	2,303,108	2,381,200	2.0	2.0	3.4	2.0



Industrial Structure in the Thompson Rivers College Region Compared with BC

Percent Share of Employment by Industry

Ranked by the Percentage Point Difference in the Industry Share in the College Region Compared with BC



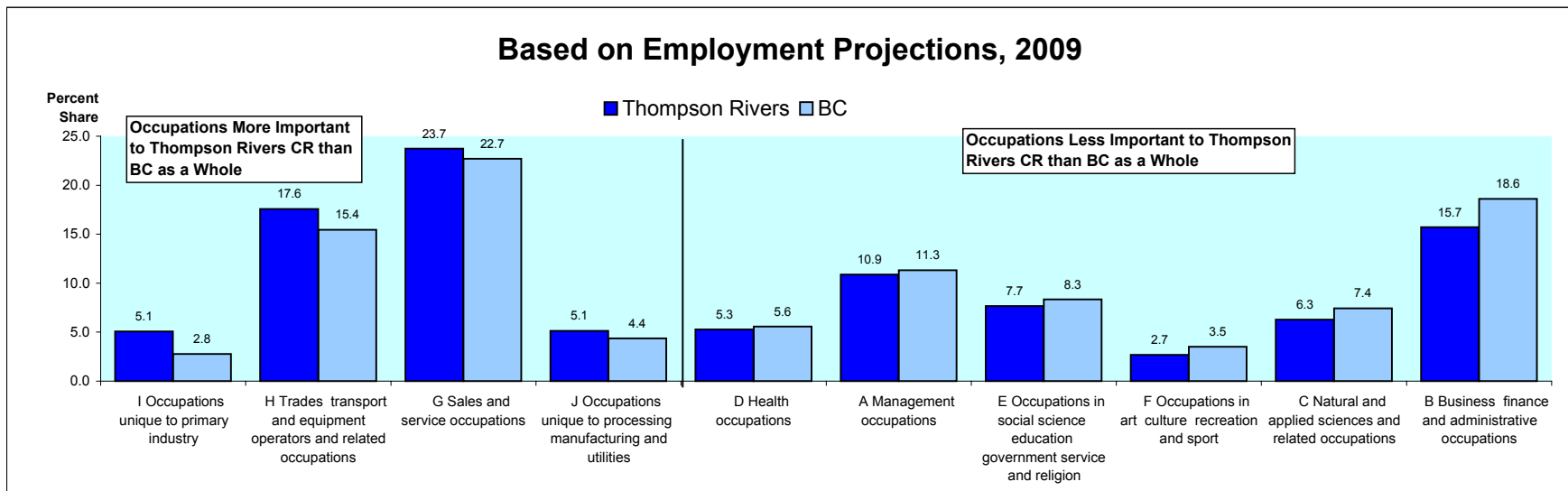
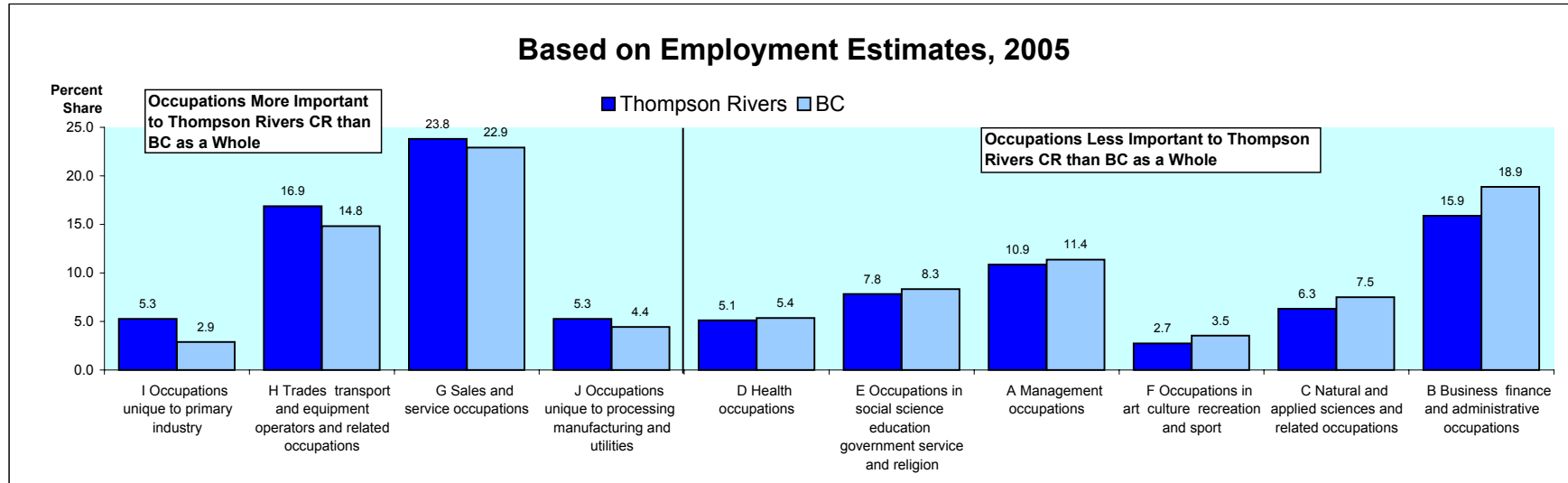
Thompson Rivers College Region

	Estimated	Projected		Average Annual % Chg			Avg Annual % Chg
	Employment	Employment Levels					Over 4 Years
	<u>2005</u>	<u>2009</u>	<u>2010</u>	<u>2007/2005</u>	<u>2009/2007</u>	<u>2010/2009</u>	<u>2009/2005</u>
ACC&FD	8,531	9,556	10,190	2.5	3.3	6.6	3.0
AGRIC	2,693	2,762	2,882	0.9	0.4	4.4	0.6
BEVMFG	122	136	138	4.0	1.7	1.0	2.9
BUS_HI	1,841	2,089	2,148	2.5	4.1	2.8	3.4
BUS_LO	5,129	5,344	5,468	1.2	0.8	2.3	1.0
COMMUNICA	3,179	3,370	3,406	1.6	1.4	1.1	1.5
CONSTRUCT	7,475	9,139	8,587	2.9	7.8	-6.0	5.6
EDUCATION	5,933	6,088	6,105	0.9	0.4	0.3	0.7
FIRE	3,164	3,269	3,421	1.3	0.4	4.7	0.8
FISHING	11	12	13	1.6	1.4	7.1	1.5
FISHMFG	-	-	-	-	-	-	-
FOODMFG	215	239	241	3.9	1.6	0.7	2.8
FORESTLOG	2,604	2,678	2,655	1.8	-0.4	-0.9	0.7
GOVT	4,320	4,474	4,509	0.9	0.9	0.8	0.9
HEALTH	6,459	7,406	7,724	3.7	3.4	4.3	3.7
MINING	1,361	1,498	1,555	2.6	2.4	3.8	2.5
MINMFG	104	106	106	0.5	0.1	0.2	0.3
OTHMFG	1,881	2,006	2,138	1.3	2.0	6.6	1.7
OTHSERV	5,440	5,593	5,878	0.6	0.8	5.1	0.7
PAPERPULP	792	848	852	2.2	1.2	0.5	1.8
PETROL	162	196	184	6.1	3.9	-6.3	5.2
PETROLMFG	-	-	-	-	-	-	-
RETAIL	11,335	11,818	12,501	1.4	0.7	5.8	1.1
TRANOTHER	1,885	2,087	2,138	2.6	2.6	2.4	2.7
TRANRAIL	815	899	920	2.6	2.4	2.3	2.6
TRANTRUCK	2,334	2,518	2,578	1.8	2.0	2.4	2.0
TRANWATER	47	53	54	3.1	2.8	2.5	3.0
UTILITIES	295	307	314	1.4	0.7	2.2	1.1
WDOTHER	1,077	1,103	1,160	0.4	0.8	5.2	0.6
WDSAWMILLS	3,822	3,915	4,119	0.4	0.8	5.2	0.6
WHOLESALE	2,553	2,659	2,790	0.9	1.2	4.9	1.0
ALL INDUSTRIES	85,651	92,310	94,914	1.8	2.0	2.8	1.9

Occupational Structure in the Thompson Rivers College Region Compared with BC

Percent Share of Employment by Occupation

Ranked by the Percentage Point Difference in the Occupation Share in the College Region Compared with BC



Thompson Rivers College Region

Occupation	Estimated Employment	Average Annual % Change			Chg Over 4 Years
	<u>2005</u>	<u>2007/2005</u>	<u>2009/2007</u>	<u>2010/2009</u>	<u>2009/2005</u>
All occupations	85,651	1.8	2.0	2.8	1.9
A Management occupations	9,306	1.8	2.1	3.1	2.0
B Business finance and administrative occupations	13,616	1.6	1.6	2.7	1.7
C Natural and applied sciences and related occupations	5,407	1.7	1.7	1.9	1.8
D Health occupations	4,384	2.8	2.7	4.4	2.8
E Occupations in social science education government service and religion	6,702	1.5	1.2	1.9	1.4
F Occupations in art culture recreation and sport	2,346	1.4	1.3	1.9	1.4
G Sales and service occupations	20,393	1.8	1.8	5.1	1.9
H Trades transport and equipment operators and related occupations	14,466	2.1	3.8	-0.3	3.0
I Occupations unique to primary industry	4,515	1.3	0.5	2.6	0.9
J Occupations unique to processing manufacturing and utilities	4,517	1.2	1.2	4.2	1.2

Projected Annual Growth Rates in Occupational Demand (2-digits)

Thompson Rivers College Region

Projected Annual Growth Rates in Occupational Demand

	Estimated Employment	Average Annual % Change			Avg Annual % Chg Over 4 Years
	<u>2005</u>	<u>2007/2005</u>	<u>2009/2007</u>	<u>2010/2009</u>	<u>2009/2005</u>
All occupations	85,651	1.8	2.0	2.8	1.9
A2 Managers in retail trade food and accommodation services	1,049	1.6	1.9	2.3	1.8
A3 Other managers n.e.c.	1,803	1.6	1.6	3.0	1.6
B0 Professional occupations in business and finance	3,569	1.8	1.8	5.8	1.8
B1 Finance and insurance administration occupations	2,884	1.9	3.0	0.2	2.5
B2 Secretaries	2,136	1.5	1.4	3.0	1.4
B3 Administrative and regulatory occupations	1,322	1.6	1.8	2.5	1.7
B4 Clerical supervisors	1,779	1.7	2.0	2.0	1.9
B5 Clerical occupations	1,462	1.6	1.9	2.2	1.8
C0 Professional occupations in natural and applied sciences	279	1.5	1.3	3.2	1.4
C1 Technical occupations related to natural and applied sciences	6,638	1.7	1.5	3.0	1.6
D0 Professional occupations in health	2,948	1.7	1.7	2.1	1.7
D1 Nurse supervisors and registered nurses	2,460	1.7	1.8	1.6	1.8
D2 Technical and related occupations in health	1,024	2.7	2.5	4.5	2.7
D3 Assisting occupations in support of health services	1,144	3.0	2.9	4.4	3.0
E0 Judges, lawyers, psychologists, social workers, ministers of religion & policy/program officers	1,106	2.6	2.6	4.2	2.7
E1 Teachers and professors	1,109	2.8	2.7	4.5	2.8
E2 Paralegals, social services workers & occup. in educ. & religion n.e.c.	1,779	1.7	1.7	2.9	1.7
F0 Professional occupations in art and culture	3,172	0.9	0.4	0.4	0.7
F1 Technical occupations in art, culture, recreation and sport	1,752	2.2	2.1	3.4	2.2
G0 Sales and service supervisors	981	1.4	1.2	1.4	1.3
G1 Wholesale, technical, insurance, real estate sales specialists & retail, wholesale and grain buyers	1,364	1.5	1.5	2.2	1.5
G2 Retail salespersons and sales clerks	614	1.9	2.0	5.6	2.0
G3 Cashiers	1,297	1.3	1.2	4.1	1.3
G4 Chefs and cooks	3,631	1.4	0.8	5.4	1.2
G5 Occupations in food and beverage service	1,647	1.6	1.1	5.6	1.3

Thompson Rivers College Region

Projected Annual Growth Rates in Occupational Demand

	Estimated Employment	Average Annual % Change			Avg Annual % Chg Over 4 Years
	<u>2005</u>	<u>2007/2005</u>	<u>2009/2007</u>	<u>2010/2009</u>	<u>2009/2005</u>
G6 Occupations in protective services	1,637	2.5	3.1	6.2	2.9
G7 Occup. in travel & accommodation incl. attendants in recreation & sport	2,101	2.5	3.2	6.5	2.9
G8 Childcare and home support workers	919	1.1	1.0	1.5	1.1
G9 Sales and service occupations n.e.c.	709	2.3	2.5	3.8	2.5
H0 Contractors and supervisors in trades and transportation	1,621	1.8	1.6	3.3	1.7
H1 Construction trades	6,220	1.8	2.0	5.3	2.0
H2 Stationary engineers, power stn operators & electrical trades & telecom.	791	2.4	5.2	-2.4	3.9
H3 Machinists, metal forming, shaping and erecting occupations	3,050	2.7	6.8	-4.7	4.9
H4 Mechanics	1,020	2.2	4.3	-1.6	3.3
H5 Other trades n.e.c.	746	1.9	3.4	1.0	2.7
H6 Heavy equipment and crane operators including drillers	2,169	1.4	1.7	3.2	1.6
H7 Transport equipment operators & related workers, excl. labourers	693	1.4	2.4	2.4	2.0
H8 Trades helpers, construction and transport labourers & related	842	2.4	4.4	-1.7	3.5
I0 Occupations unique to agriculture, excluding labourers	3,300	2.0	2.1	2.3	2.1
I1 Occup. unique to forestry ops, mining, oil & gas extraction, fishing excl. labourers	1,854	2.0	3.6	0.0	2.9
I2 Primary production labourers	2,330	0.9	0.5	4.1	0.7
J0 Supervisors in manufacturing	1,230	1.9	0.5	0.6	1.2
J1 Machine operators in manufacturing	956	1.6	0.7	1.5	1.1
J2 Assemblers in manufacturing	383	1.7	1.2	3.8	1.5
J3 Labourers in processing, manufacturing and utilities	1,948	1.3	1.2	4.1	1.3

Appendix 1

Summary of Methodology for the British Columbia Regional Employment Projection Model (REPM)

The methodology used in the model has come largely from previous work on community dependencies carried out earlier by BC STATS. The fundamental premise is that the economy of a region can be represented by income flows that can be classified as “basic” (or driver) and “non-basic” (or support) depending on the source of the income.

The model calculates indirect employment effects from employment changes in the basic sectors using multipliers based in inter-industry linkages from the British Columbia Input-Output Model. Similarly, non-basic, or induced effects are calculated using an income-to-non-basic-jobs ratio.

The current version of the model is benchmarked to the 2001 Census employment by Regional District, and is projected forward up to the most up-to-date annual employment data from the Labour Force Survey. The growth rates from the Labour Force Survey (LFS) at the provincial level for the basic industries are used to project growth down to the Regional District level. The model then calculates the indirect jobs based on the Regional District specific multipliers. The direct and indirect employment levels are then used to calculate the wages and salaries earned in the basic industries which in turn are converted to employment in the non-basic industries through the income to support-industry job multipliers. As well, transfer payments and investment income are also converted to employment in the non-basic industries using the same multipliers. The output from the model is then benchmarked to the LFS industry numbers at the BC level as well as to the LFS regional employment numbers for the Development Regions and the Capital and Greater Vancouver Regional Districts. In the current version of the model, the employment numbers are reconciled up to the 2005 annual averages from the LFS.

Once the model is brought up to the most current employment levels, then the forecast is carried out for five to ten years further. The industrial employment projections from the Canadian Occupational Projection System (COPS) are now used as the source data for the industrial growth, both in determining the growth rates in the direct employment and then as a benchmark on which to reconcile the industrial employment generated by the model.

While the total employment is forced to the COPS employment levels, there is leeway to adjust growth rates by industry across the sub-provincial regions. There are some standard variables that are used to differentiate the outlook for

the regions. For example, the growth in the education sector is dictated by the projected K-12 and post-secondary population growth in the relevant age groups. Government Services is projected in line with the total population projections for the Regional Districts. Employment in the Health Sector is so often governed by the growth in the senior's population as are the transfer payments flowing in. (CPP and OAS is a large component of transfer payments). As well, pensions from private pension plans are considered investment income meaning seniors receive a high proportion of the total investment income in a region.

An important determining factor of growth by region is the major projects coming on stream in the outlook timeframe. Firstly they impact construction employment and secondly many will impact specific industries once they move into the production phase. In BC, we are dealing with the preparations for the 2010 Winter Games so many of the construction occupations will be in short supply.

The intent is to update the REPM annually, based on another year of LFS data plus a new COPS forecast. Currently, there is a demand for economic forecasts by occupation at the college region level. College Regions are aggregations of sub-sets of Regional Districts. Occupational forecasts are being produced at the college region level. In the appendix there is a conversion table which outlines which Regional District belongs to which College Region.

The model is only as good as the input data assumptions. Our reliance on good quality data from COPS is very important. Users of the data who perceive any problems with the assumptions in the model or question the quality of any of the data series being used should contact BC STATS at bcstats@gov.bc.ca.

May 2, 2006

Appendix 2

COPS INDUSTRY CONVERSION TO REPM

REPM INDUSTRY	COPS INDUSTRY	% of COPS INDUSTRY
ACC&FD	31 Accommodation and food services	100
AGRIC	1 Agriculture	100
BEVMFG	9 Food and Beverage Products	16
BUS_HI	25 Computer System Design Services	100
BUS_HI	24 Professional Business Services	50
BUS_HI	26 Other Professional Services	50
BUS_LO	27 Management, Administrative and Other Support	100
BUS_LO	24 Professional Business Services	50
BUS_LO	26 Other Professional Services	50
COMMUNICA	30 Information, culture and recreation	100
CONSTRUCT	8 Construction	100
EDUCATION	28 Educational Services	100
FIRE	23 Finance, Insurance, Real Estate and Leasing	100
FISHING	3 Fishing, Hunting and Trapping	100
FISHMFG	9 Food and Beverage Products	18
FOODMFG	9 Food and Beverage Products	66
FORESTLOG	2 Forestry and Logging with support activities	100
GOVT	33 Public administration	100
HEALTH	29 Health Care and Social Assistance	75
MINING	5 Mining (except Oil and Gas)	100
MINING	6 Support Activities for Mining and Oil and Gas Extraction	67
MINMFG	14 Manufactured Mineral Products	50
OTHMFG	12 Printing and Related Support Activities	100
OTHMFG	13 Rubber, Plastics and Chemicals	100
OTHMFG	14 Manufactured Mineral Products	50
OTHMFG	15 Metal Fabrication and Machinery (excluding electrical)	100
OTHMFG	16 Computer, Electronic and Electrical Products	100
OTHMFG	17 Motor Vehicle, Body, Trailer & Parts Manufacturing	100
OTHMFG	18 Other Transportation Equipment Manufacturing	100
OTHSERV	29 Health Care and Social Assistance	25
OTHSERV	32 Other services	100

COPS INDUSTRY CONVERSION TO REPM

REPM INDUSTRY	COPS INDUSTRY	% of COPS INDUSTRY
PAPERPULP	11 Paper Manufacturing	100
PETROL	4 Oil and Gas Extraction	100
PETROL	6 Support Activities for Mining and Oil and Gas Extraction	33
PETROLMFG	19 Other Manufacturing	7
RETAIL	21 Retail Trade	100
TRANOTHER	22 Transportation and Warehousing	59
TRANRAIL	22 Transportation and Warehousing	5
TRANTRUCK	22 Transportation and Warehousing	31
TRANWATER	22 Transportation and Warehousing	5
UTILITIES	7 Utilities	100
WDOTHER	10 Wood Product Manufacturing	29
WDSAWMILLS	10 Wood Product Manufacturing	71
WHOLESALE	20 Wholesale Trade	100

Appendix 3

REGIONAL DISTRICT TO COLLEGE REGION CONVERSION FOR REPM

COLLEGE REGION	REGIONAL DISTRICT #	REGIONAL DISTRICT NAME	% of REGIONAL DISTRICT
CAMOSUN	17	Capital	100
FRASER VALLEY	9	Fraser Valley	100
LOWER MAINLAND	15	Greater Vancouver	100
LOWER MAINLAND	29	Sunshine Coast	100
LOWER MAINLAND	31	Squamish Lillooet	87
MALASPINA	19	Cowichan Valley	100
MALASPINA	21	Nanaimo	100
MALASPINA	27	Powell River	100
NEW CALEDONIA	41	Cariboo	37
NEW CALEDONIA	51	Bulkley Nechako	61
NEW CALEDONIA	53	Fraser-Fort George	100
NORTH ISLAND	23	Alberni-Clayoquot	100
NORTH ISLAND	25	Comox Strathcona	100
NORTH ISLAND	43	Mount Waddington	100
NORTH ISLAND	45	Central Coast	100
NORTHERN LIGHTS	49	Kitimat Stikine	2
NORTHERN LIGHTS	55	Peace River	100
NORTHERN LIGHTS	57	Stikine	100
NORTHERN LIGHTS	59	Northern Rockies	100
NORTHWEST	47	Skeena-Queen Charlotte	100
NORTHWEST	49	Kitimat Stikine	98
NORTHWEST	51	Bulkley Nechako	39
OKANAGAN	7	Okanagan-Similkameen	100
OKANAGAN	35	Central Okanagan	100
OKANAGAN	37	North Okanagan	100
OKANAGAN	39	Columbia Shushwap	85
ROCKIES	1	East Kootenay	100
ROCKIES	3	Central Kootenays	20
ROCKIES	39	Columbia Shushwap	15
SELKIRK	3	Central Kootenays	80
SELKIRK	5	Kootenay Boundary	100
THOMPSON RIVERS	31	Squamish Lillooet	13
THOMPSON RIVERS	33	Thompson Nicola	100
THOMPSON RIVERS	41	Cariboo	63

Appendix 4

Projected Annual Growth Rates in Occupational Demand (3-digit)

Thompson Rivers College Region

Projected Annual Growth Rates in Occupational Demand

	Estimated Employment	Average Annual % Change			Avg Annual % Chg Over 4 Years
	<u>2005</u>	<u>2007/2005</u>	<u>2009/2007</u>	<u>2010/2009</u>	<u>2009/2005</u>
All occupations	85,651	1.8	2.0	2.8	1.9
A01.001 Legislators and Senior Management	1,049	1.6	1.9	2.3	1.8
A11.011 Administrative Services Managers	618	1.6	1.6	2.9	1.6
A12.021 Managers in Engineering, Architecture, Science & Information Systems	288	1.5	1.7	2.3	1.6
A13.061 Sales, Marketing and Advertising Managers	632	1.5	1.6	3.5	1.6
A14.072 Facility Operation and Maintenance Managers	262	1.7	1.7	2.9	1.8
A21.062 Managers in Retail Trade	2,246	1.4	0.9	5.4	1.2
A22.063 Managers in Food Service and Accommodation	1,327	2.5	3.2	6.5	2.9
A30.012 Managers in Financial and Business Services	471	1.3	0.8	4.0	1.1
A31.013 Managers in Communication (Except Broadcasting)	57	1.7	1.7	1.4	1.7
A32.031 Managers in Health, Education, Social and Community Services	436	1.6	1.3	1.9	1.5
A33.041 Managers in Public Administration	68	1.1	1.0	1.5	1.1
A34.051 Managers in Art, Culture, Recreation and Sport	99	1.5	1.4	1.7	1.5
A35.064 Managers in Protective Service	88	0.9	0.9	0.8	0.9
A36.065 Managers in Other Services	121	1.1	1.4	3.4	1.3
A37.071 Managers in Construction and Transportation	1,017	2.7	6.3	-4.0	4.6
A38.081 Managers in Primary Production (Except Agriculture)	209	1.9	0.9	1.2	1.4
A39.091 Managers in Manufacturing and Utilities	321	1.8	1.5	4.2	1.7
B01.111 Auditors, Accountants and Investment Professionals	1,723	1.5	1.3	3.1	1.4
B02.112 Human Resources and Business Service Professionals	411	1.4	1.5	2.6	1.5
B11.123 Finance and Insurance Administrative Occupations	1,320	1.7	1.8	2.5	1.8
B21.124 Secretaries, Records and Transcriptionists	1,776	1.7	2.0	2.0	1.9
B31.122 Administrative and Regulatory Occupations	1,461	1.6	1.9	2.2	1.8
B41.121 Clerical Supervisors	280	1.5	1.3	3.2	1.4
B51.141 Clerical Occupations, General Office Skills	2,252	1.8	1.8	2.7	1.8
B52.142 Office Equipment Operators	264	1.5	1.4	2.6	1.4
B53.143 Finance and Insurance Clerks	1,589	1.5	1.2	3.4	1.3
B54.144 Administrative Support Clerks	444	1.6	1.6	2.5	1.6
B55.145 Library Correspondence and Related Information Clerks	833	1.4	1.2	2.9	1.3

Thompson Rivers College Region

Projected Annual Growth Rates in Occupational Demand

	Estimated Employment	Average Annual % Change			Avg Annual % Chg Over 4 Years
	<u>2005</u>	<u>2007/2005</u>	<u>2009/2007</u>	<u>2010/2009</u>	<u>2009/2005</u>
B56.146 Mail and Message Distribution Occupations	385	2.1	2.0	2.9	2.1
B57.147 Recording, Scheduling and Distributing Occupations	870	1.7	1.5	3.8	1.6
C01.211 Physical Science Professionals	173	2.3	1.9	2.3	2.1
C02.212 Life Science Professionals	387	1.4	0.7	1.5	1.1
C03.213 Civil, Mechanical, Electrical and Chemical Engineers	535	2.0	2.2	1.6	2.1
C04.214 Other Engineers	261	2.3	1.8	2.4	2.1
C05.215 Architects, Urban Planners and Land Surveyors	242	1.6	2.3	1.2	2.0
C06.216 Mathematicians, Statisticians and Actuaries	19	1.6	1.7	2.2	1.7
C07.217 Computer and Information Systems Professionals	1,335	1.6	1.5	2.5	1.6
C11.221 Technical Occupations in Physical Sciences	118	2.1	1.9	2.3	2.0
C12.222 Technical Occupations in Life Sciences	506	1.4	0.6	1.1	1.0
C13.223 Technical Occupations in Civil, Mechanical & Industrial Engineering	241	2.1	4.4	-1.6	3.4
C14.224 Technical Occupations in Electronics and Electrical Engineering	430	1.6	1.9	2.5	1.8
C15.225 Technical Occupations in Architecture, Drafting, Surveying & Mapping	335	1.7	1.9	1.8	1.8
C16.226 Other Technical Inspectors and Regulatory Officers	163	1.7	2.3	1.1	2.0
C17.227 Transportation Officers and Controllers	204	2.3	2.1	2.1	2.2
C18.228 Technical Occupations in Computer and Information Systems	458	1.7	1.3	2.6	1.5
D01.311 Physicians Dentists and Veterinarians	516	2.9	2.8	4.3	2.9
D02.312 Optometrists, Chiropractors & Other Health Diagnosing/Treating Profs.	68	2.9	2.8	4.5	3.0
D03.313 Pharmacists, Dietitians and Nutritionists	203	1.9	1.4	5.2	1.7
D04.314 Therapy and Assessment Professionals	236	2.9	2.8	4.2	2.9
D11.315 Nurse Supervisors and Registered Nurses	1,144	3.0	2.9	4.4	3.0
D21.321 Medical Technologists and Technicians (Except Dental Health)	423	2.7	2.6	4.1	2.7
D22.322 Technical Occupations in Dental Health Care	120	2.7	2.8	4.8	2.8
D23.323 Other Technical Occupations in Health Care (Except Dental)	563	2.6	2.5	4.2	2.6
D31.341 Assisting Occupations in Support of Health Services	1,111	2.8	2.7	4.5	2.8
E01.411 Judges, Lawyers and Quebec Notaries	445	1.5	1.6	2.3	1.6
E02.415 Psychologists, Social Workers, Counsellors, Clergy & Probation Officers	680	1.9	1.9	3.8	2.0
E03 Policy and program officers researchers and consultants	660	1.6	1.5	2.3	1.6
E11.412 University Professors and Assistants	422	0.9	0.4	0.4	0.7

Thompson Rivers College Region

Projected Annual Growth Rates in Occupational Demand

	Estimated Employment	Average Annual % Change			Avg Annual % Chg Over 4 Years
	2005	2007/2005	2009/2007	2010/2009	2009/2005
E12.413 College and Other Vocational Instructors	501	1.0	0.5	0.7	0.8
E13.414 Secondary and Elementary School Teachers & Educational Counsellors	2,247	0.9	0.4	0.3	0.7
E21.421 Paralegals, Social Services Workers & Occupations in Education & Religion n.e.c.	1,752	2.2	2.1	3.4	2.2
F01 Librarians, archivists, conservators and curators	68	1.4	1.3	1.2	1.4
F02.512 Writing, Translating and Public Relations Professionals	392	1.5	1.4	2.0	1.5
F03.513 Creative and Performing Artists	521	1.3	1.0	1.0	1.2
F11.521 Technical Occupations in Libraries, Archives Museums & Art Galleries	93	1.4	1.3	0.9	1.4
F12.522 Photographers, Graphic Arts Technicians & Technical & coordinating Occupations in Motion Pictures Broadcasting & Performing	276	1.5	1.5	1.7	1.5
F13.523 Announcers and Other Performers	63	1.7	1.7	2.2	1.7
F14.524 Creative Designers and Craftspersons	534	1.5	1.6	3.1	1.6
F15.525 Athletes, Coaches, Referees and Related Occupations	398	1.4	1.2	1.7	1.3
G01.621 Sales and Service Supervisors	614	1.9	2.0	5.6	2.0
G11.641 Sales Representatives, Wholesale Trade	670	1.3	1.4	4.1	1.4
G12.622 Technical Sales Specialists, Wholesale Trade	213	1.3	1.6	3.6	1.5
G13.623 Insurance and Real Estate Sales Occupations and Buyers	413	1.3	0.8	4.3	1.1
G21.642 Retail Salespersons and Sales Clerks	3,631	1.4	0.9	5.4	1.2
G31.661 Cashiers	1,648	1.6	1.1	5.7	1.3
G41.624 Chefs and Cooks	1,637	2.5	3.1	6.2	2.9
G51.645 Occupations in Food and Beverage Service	2,100	2.5	3.2	6.5	2.9
G61.626 Police Officers and Fire-fighters	426	0.9	0.9	0.8	0.9
G62.646 Other Occupations in Protective Service	357	1.0	1.0	1.4	1.0
G63.665 Security Guards and Related Occupations	135	1.6	1.6	3.7	1.6
G71.643 Occupations in Travel and Accommodation	444	2.5	2.9	4.5	2.8
G72.644 Tour and Recreational Guides and Casino Occupations	131	1.8	1.7	2.1	1.8
G73.667 Other Occupations in Travel Accommodation, Amusement & Recreation	131	2.0	2.1	3.1	2.1
G81.647 Childcare and Home Support Workers	1,620	1.8	1.6	3.3	1.7
G91.627 Technical Occupations in Personal Service	440	0.6	0.8	5.1	0.7
G92.648 Other Occupations in Personal Service	248	0.8	0.9	4.9	0.9

Thompson Rivers College Region

Projected Annual Growth Rates in Occupational Demand

	Estimated Employment	Average Annual % Change			Avg Annual % Chg Over 4 Years
	<u>2005</u>	<u>2007/2005</u>	<u>2009/2007</u>	<u>2010/2009</u>	<u>2009/2005</u>
G93.666 Cleaners	1,486	1.9	2.2	4.1	2.1
G94.625 Butchers and Bakers	389	1.8	1.2	5.3	1.5
G96.664 Food Counter Attendants, Kitchen Helpers & Related Occupations	2,043	2.5	3.2	6.3	2.9
G97.662 Other Sales and Related Occupations	1,375	1.4	0.8	5.6	1.1
G98.668 Other Elemental Service Occupations	240	1.4	1.6	4.7	1.5
H01.721 Contractors and Supervisors, Trades and Related Workers	696	2.4	5.6	-3.0	4.2
H02.722 Supervisors, Railway and Motor Transportation Occupations	93	2.4	2.3	2.2	2.4
H11.725 Plumbers, Pipefitters and Gas Fitters	457	2.7	6.3	-4.3	4.7
H12.727 Carpenters and Cabinetmakers	1,304	2.6	6.5	-4.3	4.7
H13.728 Masonry and Plastering Trades	473	2.9	7.5	-5.7	5.4
H14.729 Other Construction Trades	815	2.7	7.0	-5.0	5.1
H21.724 Electrical Trades and Telecommunications Occupations	927	2.2	4.6	-2.0	3.5
H22.735 Stationary Engineers and Power Station and System Operators	92	1.8	1.6	2.4	1.7
H31.723 Machinists and Related Occupations	127	1.4	1.8	4.7	1.6
H32.726 Metal Forming, Shaping and Erecting Trades	620	2.0	3.8	0.3	3.0
H41.731 Machinery & Transportation Equipment Mechanics (Except Motor Vehicle)	1,205	1.7	2.2	2.1	2.0
H42.732 Automotive service technicians	837	1.0	1.0	4.8	1.0
H43.733 Other Mechanics	128	1.6	1.6	3.8	1.7
H51.734 Upholsterers, Tailors, Shoe Repairers, Jewellers & Related Occupations	146	1.1	1.2	5.3	1.2
H52.738 Printing Press Operators, Commercial Divers & Other Trades & Related Occupations n.e.c.	187	0.9	1.3	4.3	1.1
H53.744 Other installers repairers and servicers	359	1.9	3.5	0.4	2.8
H61.742 Heavy Equipment Operators	708	2.4	4.4	-1.8	3.5
H62.737 Crane Operators Drillers and Blasters	132	2.3	4.4	-1.7	3.5
H71.741 Motor Vehicle and Transit Drivers	2,825	2.0	2.1	2.3	2.1
H72.736 Train Crew Operating Occupations	243	2.6	2.4	2.2	2.6
H73.743 Other Transport Equipment Operators and Related Workers	231	2.3	2.2	2.1	2.3
H81.745 Longshore Workers and Material Handlers	979	1.4	1.5	3.7	1.5
H82.761 Trades Helpers and Labourers	758	2.7	6.6	-4.4	4.8

Thompson Rivers College Region

Projected Annual Growth Rates in Occupational Demand

	Estimated Employment	Average Annual % Change			Avg Annual % Chg Over 4 Years
	<u>2005</u>	<u>2007/2005</u>	<u>2009/2007</u>	<u>2010/2009</u>	<u>2009/2005</u>
H83.762 Public Works and Other Labourers n.e.c.	121	1.9	2.6	0.6	2.3
I01.825 Contractors, Operators & Supervisors in Agriculture, Horticulture & Aquaculture	1,276	0.9	0.5	4.1	0.7
I02.843 Agriculture and Horticulture Workers	1,056	0.9	0.4	4.2	0.7
I11.821 Supervisors, Logging and Forestry	173	1.4	0.1	0.7	0.7
I12.822 Supervisors, Mining Oil and Gas	97	2.9	2.5	2.6	2.8
I13.823 Underground Miners, Oil and Gas Drillers and Related Workers	108	3.2	2.4	2.9	2.9
I14.841 Mine Service Workers and Operators in Oil and Gas Drilling	61	3.9	2.7	1.2	3.4
I15.824 Logging Machinery Operators	301	1.5	0.1	0.3	0.8
I16.842 Logging and Forestry Workers	482	1.7	-0.2	-0.4	0.8
I17.826 Fishing Vessel Masters and Skippers and Fishermen/women	-	-	-	-	-
I18.844 Other Fishing and Trapping Occupations	-	-	-	-	-
I21.861 Primary Production Labourers	955	1.6	0.7	1.5	1.1
J01.921 Supervisors, Processing Occupations	316	1.8	1.1	3.7	1.5
J02.922 Supervisors, Assembly and Fabrication	67	1.2	1.8	4.5	1.5
J11.923 Central Control & Process Operators in Manufacturing & Processing	112	7.1	1.6	-0.1	4.5
J12.941 Machine Operators & Related Workers in Metal & Mineral Products Processing	99	1.8	2.6	2.6	2.2
J13.942 Machine Operators & Related Workers in Chemical, Plastic & Rubber Processing	40	1.5	1.5	2.6	1.5
J14.943 Machine Operators & Related Workers in Pulp & Paper Production & Wood Processing	1,193	0.6	0.9	4.5	0.8
J15.944 Machine Operators and Related Workers in Textile Processing	20	1.5	1.1	4.1	1.3
J16.945 Machine Operators and Related Workers in Fabric, Fur & Leather Products Manufacturing	119	1.3	1.7	5.6	1.5
J17.946 Machine Operators & Related Workers in Food, Beverage & Tobacco Processing	84	2.9	1.4	2.3	2.2
J18.947 Printing Machine Operators and Related Occupations	141	1.2	1.3	4.8	1.3
J19.951 Machining, Metalworking, Woodworking & Related Machine Operators	140	0.9	1.4	4.8	1.2
J21.948 Mechanical Electrical and Electronics Assemblers	138	1.4	1.9	4.8	1.7

Thompson Rivers College Region

Projected Annual Growth Rates in Occupational Demand

	Estimated Employment	Average Annual % Change			Avg Annual % Chg Over 4 Years
	<u>2005</u>	<u>2007/2005</u>	<u>2009/2007</u>	<u>2010/2009</u>	<u>2009/2005</u>
J22.949 Other Assembly and Related Occupations	375	1.3	1.9	4.1	1.6
J31.961 Labourers in Processing Manufacturing and Utilities	1,674	0.9	1.0	4.4	1.0

Appendix 5

Projected Annual Growth Rates in Occupational Demand (4-digit)

Thompson Rivers College Region

Projected Annual Growth Rates in Occupational Demand

	Estimated Employment	Average Annual % Change			Avg Annual % Chg Over 4 Years
	<u>2005</u>	<u>2007/2005</u>	<u>2009/2007</u>	<u>2010/2009</u>	<u>2009/2005</u>
All occupations	85,651	1.8	2.0	2.8	1.9
A Management occupations	9,306	1.8	2.1	3.1	2.0
A0 Senior management occupations	1,049	1.6	1.9	2.3	1.8
A01.001 Legislators and Senior Management	1,049	1.6	1.9	2.3	1.8
A011.0011 Legislators	40	0.9	0.8	0.7	0.9
A012.0012 Senior Government Managers and Officials	112	1.0	1.0	1.0	1.0
A013.0013 Senior Managers - Financial, Communications and Other Business Services	268	1.5	1.3	2.9	1.4
A014.0014 Senior Managers - Health, Education, Social and Community Services and Membership Organizations	111	1.6	1.6	3.8	1.6
A015.0015 Senior Managers - Trade, Broadcasting and Other Services n.e.c.	222	1.3	1.3	5.0	1.3
A016.0016 Senior Managers - Goods Production, Utilities, Transportation and Construction	297	2.3	3.5	0.0	3.0
A1 Specialist managers	1,803	1.6	1.6	3.0	1.6
A11.011 Administrative Services Managers	618	1.6	1.6	2.9	1.6
A111.0111 Financial Managers	302	1.5	1.5	2.9	1.6
A112.0112 Human Resources Managers	122	1.9	1.4	2.8	1.7
A113.0113 Purchasing Managers	36	1.4	1.5	3.6	1.5
A114.0114 Other Administrative Services Managers	157	1.6	1.7	2.6	1.7
A12.021 Managers in Engineering, Architecture, Science and Information Systems	288	1.5	1.7	2.3	1.6
A121.0211 Engineering Managers	72	1.6	2.3	1.8	2.0
A122.0213 Computer and Information Systems Managers	184	1.5	1.5	2.6	1.5
A123.0212 Architecture and Science Managers	29	1.7	1.9	1.9	1.8
A13.061 Sales, Marketing and Advertising Managers	632	1.5	1.6	3.5	1.6
A131.0611 Sales, Marketing and Advertising Managers	634	1.5	1.6	3.5	1.6
A14.072 Facility Operation and Maintenance Managers	262	1.7	1.7	2.9	1.8
A141.0721 Facility Operation and Maintenance Managers	263	1.7	1.7	2.9	1.7

Thompson Rivers College Region

Projected Annual Growth Rates in Occupational Demand

	Estimated Employment	Average Annual % Change			Avg Annual % Chg Over 4 Years
	<u>2005</u>	<u>2007/2005</u>	<u>2009/2007</u>	<u>2010/2009</u>	<u>2009/2005</u>
A2 Managers in retail trade, food and accommodation services	3,569	1.8	1.8	5.8	1.8
A21.062 Managers in Retail Trade	2,246	1.4	0.9	5.4	1.2
A211.0621 Retail Trade Managers	2,244	1.4	0.9	5.4	1.2
A22.063 Managers in Food Service and Accommodation	1,327	2.5	3.2	6.5	2.9
A221.0631 Restaurant and Food Service Managers	989	2.5	3.2	6.5	2.9
A222.0632 Accommodation Service Managers	338	2.5	3.2	6.4	2.9
A3 Other managers n.e.c.	2,884	1.9	3.0	0.2	2.5
A30.012 Managers in Financial and Business Services	471	1.3	0.8	4.0	1.1
A301.0121 Insurance, Real Estate and Financial Brokerage Managers	120	1.4	1.1	3.4	1.2
A302.0122 Banking, Credit and Other Investment Managers	306	1.3	0.5	4.6	0.9
A303.0123 Other Business Services Managers	45	1.5	1.9	2.5	1.8
A31.013 Managers in Communication (Except Broadcasting)	57	1.7	1.7	1.4	1.7
A311.0131 Telecommunication Carriers Managers	50	1.6	1.6	1.2	1.6
A312.0132 Postal and Courier Services Managers	-	-	-	-	-
A32.031 Managers in Health, Education, Social and Community Services	436	1.6	1.3	1.9	1.5
A321.0311 Managers in Health Care	116	2.8	2.7	4.1	2.9
A322.0312 Administrators - Post-Secondary Education and Vocational Training	93	0.9	0.5	0.4	0.7
A323.0313 School Principals and Administrators of Elementary and Secondary Education	162	0.9	0.4	0.3	0.7
A324.0314 Managers in Social, Community and Correctional Services	67	2.0	2.0	3.7	2.0
A33.041 Managers in Public Administration	68	1.1	1.0	1.5	1.1
A331.0411 Government Managers - Health and Social Policy Development and Program Administration	25	1.4	1.3	1.9	1.4
A332.0412 Government Managers - Economic Analysis, Policy Development and Program Administration	23	1.0	0.9	1.3	0.9
A333.0413 Government Managers - Education Policy Development and Program Administration	-	-	-	-	-
A334.0414 Other Managers in Public Administration	15	1.0	0.9	0.9	1.0
A34.051 Managers in Art, Culture, Recreation and Sport	99	1.5	1.4	1.7	1.5

Thompson Rivers College Region

Projected Annual Growth Rates in Occupational Demand

	Estimated Employment	Average Annual % Change			Avg Annual % Chg Over 4 Years
	<u>2005</u>	<u>2007/2005</u>	<u>2009/2007</u>	<u>2010/2009</u>	<u>2009/2005</u>
A341.0511 Library, Archive, Museum and Art Gallery Managers	17	1.4	1.5	1.3	1.5
A342.0512 Managers - Publishing, Motion Pictures, Broadcasting and Performing Arts	39	1.6	1.5	1.5	1.6
A343.0513 Recreation and Sports Program and Service Directors	46	1.4	1.3	1.8	1.4
A35.064 Managers in Protective Service	88	0.9	0.9	0.8	0.9
A351.0641 Commissioned Police Officers	15	0.9	0.9	0.8	0.9
A352.0642 Fire Chiefs and Senior Fire-fighting Officers	15	0.9	0.8	0.9	0.9
A353.0643 Commissioned Officers, Armed Forces	58	0.9	0.9	0.8	0.9
A36.065 Managers in Other Services	121	1.1	1.4	3.4	1.3
A361 0651 Other Services Managers	119	1.1	1.4	3.4	1.3
A37.071 Managers in Construction and Transportation	1,017	2.7	6.3	-4.0	4.6
A371.0711 Construction Managers	562	2.8	7.3	-5.4	5.2
A372.0712 Residential Home Builders and Renovators	241	2.9	7.5	-5.7	5.4
A373.0713 Transportation Managers	214	2.1	2.2	2.4	2.2
A38.081 Managers in Primary Production (Except Agriculture)	209	1.9	0.9	1.2	1.4
A381.0811 Primary Production Managers (Except Agriculture)	208	1.9	0.9	1.2	1.4
A39.091 Managers in Manufacturing and Utilities	321	1.8	1.5	4.2	1.7
A391.0911 Manufacturing Managers	286	1.8	1.5	4.6	1.7
A392.0912 Utilities Managers	34	3.1	1.4	1.1	2.3
B Business, finance and administrative occupations	13,616	1.6	1.6	2.7	1.7
B0 Professional occupations in business and finance	2,136	1.5	1.4	3.0	1.4
B01.111 Auditors, Accountants and Investment Professionals	1,723	1.5	1.3	3.1	1.4
B011.1111 Financial Auditors and Accountants	1,087	1.6	1.7	2.5	1.7
B012.1112 Financial and Investment Analysts	134	1.8	0.9	3.4	1.4
B013.1113 Securities Agents, Investment Dealers and Brokers	166	1.3	0.4	4.5	0.9
B014.1114 Other Financial Officers	339	1.3	0.6	4.2	0.9
B02.112 Human Resources and Business Service Professionals	411	1.4	1.5	2.6	1.5
B021.1121 Specialists in Human Resources	167	1.6	1.2	2.9	1.4
B022.1122 Professional Occupations in Business Services to Management	244	1.5	1.7	2.4	1.6

Thompson Rivers College Region

Projected Annual Growth Rates in Occupational Demand

	Estimated Employment	Average Annual % Change			Avg Annual % Chg Over 4 Years
	<u>2005</u>	<u>2007/2005</u>	<u>2009/2007</u>	<u>2010/2009</u>	<u>2009/2005</u>
B1 Finance and insurance administration occupations	1,322	1.6	1.8	2.5	1.7
B11.123 Finance and Insurance Administrative Occupations	1,320	1.7	1.8	2.5	1.8
B111.1231 Bookkeepers	954	1.7	2.3	1.9	2.0
B112.1232 Loan Officers	110	1.3	0.5	4.5	0.9
B113.1233 Insurance Adjusters and Claims Examiners	161	1.3	0.5	4.4	0.9
B114.1234 Insurance Underwriters	41	1.3	0.4	4.5	0.9
B115.1235 Assessors, Valuers and Appraisers	37	1.1	1.0	1.6	1.0
B116.1236 Customs, Ship and Other Brokers	21	2.0	2.0	3.0	2.1
B2 Secretaries	1,779	1.7	2.0	2.0	1.9
B21.124 Secretaries, Records and Transcriptionists	1,776	1.7	2.0	2.0	1.9
B211.1241 Secretaries (Except Legal and Medical)	1,228	1.6	2.0	1.5	1.8
B212.1242 Legal Secretaries	326	1.5	1.6	2.4	1.6
B213.1243 Medical Secretaries	197	3.0	2.8	4.4	3.0
B214.1244 Court Records and Medical Transcriptionists	25	2.6	2.6	3.8	2.7
B3 Administrative and regulatory occupations	1,462	1.6	1.9	2.2	1.8
B31.122 Administrative and Regulatory Occupations	1,461	1.6	1.9	2.2	1.8
B311.1221 Administrative Officers	925	1.7	2.1	2.3	2.0
B312.1222 Executive Assistants	126	1.5	1.7	2.3	1.6
B313.1223 Personnel and Recruitment Officers	45	1.5	1.5	2.1	1.5
B314.1224 Property Administrators	61	1.8	3.0	0.7	2.4
B315.1225 Purchasing Agents and Officers	118	1.4	1.7	3.1	1.6
B316.1226 Conference and Event Planners	56	1.5	1.4	2.9	1.5
B317.1227 Court Officers and Justices of the Peace	19	0.9	0.9	0.8	0.9
B318.1228 Immigration, Employment Insurance and Revenue Officers	108	0.9	0.9	0.8	0.9
B4 Clerical supervisors	279	1.5	1.3	3.2	1.4
B41.121 Clerical Supervisors	280	1.5	1.3	3.2	1.4
B411.1211 Supervisors, General Office & Administrative Support Clerks	68	1.5	1.4	2.4	1.5
B412.1212 Supervisors, Finance and Insurance Clerks	84	1.4	1.0	3.7	1.2
B413.1213 Supervisors, Library Correspondence and Related Information	40	1.2	1.0	2.1	1.1
B414.1214 Supervisors, Mail and Message Distribution Occupations	19	2.4	2.4	2.4	2.5

Thompson Rivers College Region

Projected Annual Growth Rates in Occupational Demand

	Estimated Employment	Average Annual % Change			Avg Annual % Chg Over 4 Years
	<u>2005</u>	<u>2007/2005</u>	<u>2009/2007</u>	<u>2010/2009</u>	<u>2009/2005</u>
B415.1215 Supervisors, Recording, Distributing and Scheduling Occupations	65	1.4	1.4	4.0	1.4
B5 Clerical occupations	6,638	1.7	1.5	3.0	1.6
B51.141 Clerical Occupations, General Office Skills	2,252	1.8	1.8	2.7	1.8
B511.1411 General Office Clerks	1,431	1.7	1.7	2.2	1.7
B513.1413 Records Management and Filing Clerks	107	2.0	1.8	3.3	1.9
B514.1414 Receptionists and Switchboard Operators	714	2.0	2.0	3.6	2.0
B52.142 Office Equipment Operators	264	1.5	1.4	2.6	1.4
B522.1422 Data Entry Clerks	210	1.4	1.4	2.7	1.4
B523.1423 Desktop Publishing Operators and Related Occupations	23	1.4	1.4	2.7	1.4
B524.1424 Telephone Operators	34	1.6	1.5	1.9	1.6
B53.143 Finance and Insurance Clerks	1,589	1.5	1.2	3.4	1.3
B531.1431 Accounting and Related Clerks	718	1.6	1.7	2.7	1.7
B532.1432 Payroll Clerks	169	1.6	1.7	2.4	1.7
B533.1433 Customer Service Representatives - Financial Services	492	1.3	0.4	4.6	0.8
B534.1434 Banking, Insurance and Other Financial Clerks	156	1.3	0.5	4.5	0.9
B535.1435 Collectors	58	2.2	0.9	3.1	1.6
B54.144 Administrative Support Clerks	444	1.6	1.6	2.5	1.6
B541.1441 Administrative Clerks	370	1.8	1.6	2.6	1.7
B542.1442 Personnel Clerks	50	1.7	1.6	2.8	1.7
B543.1443 Court Clerks	26	0.9	0.9	0.9	0.9
B55.145 Library, Correspondence and Related Information Clerks	833	1.4	1.2	2.9	1.3
B551.1451 Library Clerks	50	1.5	1.2	1.0	1.3
B552.1452 Correspondence, Publication and Related Clerks	20	1.5	1.3	2.0	1.4
B553.1453 Customer Service, Information and Related Clerks	603	1.5	1.2	3.5	1.4
B554.1454 Survey Interviewers and Statistical Clerks	160	1.0	1.0	1.1	1.0
B56.146 Mail and Message Distribution Occupations	385	2.1	2.0	2.9	2.1
B561.1461 Mail, Postal and Related Clerks	142	2.1	2.1	2.6	2.2
B562.1462 Letter Carriers	117	2.6	2.6	2.4	2.7
B563.1463 Couriers, Messengers and Door-to-Door Distributors	126	1.6	1.2	3.8	1.4

Thompson Rivers College Region

Projected Annual Growth Rates in Occupational Demand

	Estimated Employment	Average Annual % Change			Avg Annual % Chg Over 4 Years
	<u>2005</u>	<u>2007/2005</u>	<u>2009/2007</u>	<u>2010/2009</u>	<u>2009/2005</u>
B57.147 Recording, Scheduling and Distributing Occupations	870	1.7	1.5	3.8	1.6
B571.1471 Shippers and Receivers	398	1.7	1.4	4.3	1.6
B572.1472 Storekeepers and Parts Clerks	123	1.4	1.1	4.9	1.3
B573.1473 Production Clerks	38	2.9	1.7	3.5	2.3
B574.1474 Purchasing and Inventory Clerks	133	1.9	1.4	4.0	1.7
B575.1475 Dispatchers and Radio Operators	168	1.8	2.1	1.7	2.0
B576.1476 Transportation Route and Crew	11	1.9	2.0	3.1	2.0
C Natural and applied sciences and related occupations	5,407	1.7	1.7	1.9	1.8
C0 Professional occupations in natural and applied sciences	2,948	1.7	1.7	2.1	1.7
C01.211 Physical Science Professionals	173	2.3	1.9	2.3	2.1
C011.2111 Physicists and Astronomers	14	1.5	1.6	2.8	1.6
C012.2112 Chemists	51	2.6	1.6	2.3	2.1
C013.2113 Geologists, Geochemists and Geophysicists	93	2.4	2.1	2.2	2.3
C014.2114 Meteorologists	-	-	-	-	-
C015.2115 Other Professional Occupations in Physical Sciences	-	-	-	-	-
C02.212 Life Science Professionals	387	1.4	0.7	1.5	1.1
C021.2121 Biologists and Related Scientists	119	1.4	1.3	2.0	1.4
C022.2122 Forestry Professionals	247	1.4	0.4	1.2	0.9
C023.2123 Agricultural Representatives, Consultants and Specialists	20	1.2	1.1	2.6	1.1
C03.213 Civil, Mechanical, Electrical and Chemical Engineers	535	2.0	2.2	1.6	2.1
C031.2131 Civil Engineers	262	1.7	2.6	0.7	2.2
C032.2132 Mechanical Engineers	121	2.1	1.8	2.4	2.0
C033.2133 Electrical and Electronics Engineers	117	1.6	1.9	2.5	1.8
C034.2134 Chemical Engineers	34	5.4	1.4	1.7	3.5
C04.214 Other Engineers	261	2.3	1.8	2.4	2.1
C041.2141 Industrial and Manufacturing Engineers	27	1.7	2.2	2.7	2.0
C042.2142 Metallurgical and Materials Engineers	11	1.7	1.7	2.8	1.8
C043.2143 Mining Engineers	24	1.8	2.6	1.0	2.2
C044.2144 Geological Engineers	26	1.8	2.0	1.8	2.0
C045.2145 Petroleum Engineers	13	15.8	1.3	0.1	8.8

Thompson Rivers College Region

Projected Annual Growth Rates in Occupational Demand

	Estimated Employment	Average Annual % Change			Avg Annual % Chg Over 4 Years
	<u>2005</u>	<u>2007/2005</u>	<u>2009/2007</u>	<u>2010/2009</u>	<u>2009/2005</u>
C046.2146 Aerospace Engineers	-	-	-	-	-
C047.2147 Computer Engineers (Except Software Engineers)	109	1.5	1.6	2.7	1.6
C048.2148 Other Professional Engineers n.e.c.	50	1.6	1.7	2.8	1.7
C05.215 Architects, Urban Planners and Land Surveyors	242	1.6	2.3	1.2	2.0
C051.2151 Architects	122	1.6	2.1	1.9	1.9
C052.2152 Landscape Architects	11	1.6	2.0	1.7	1.8
C053.2153 Urban and Land Use Planners	49	1.6	2.9	-0.8	2.3
C054.2154 Land Surveyors	55	1.6	2.3	1.3	2.0
C06.216 Mathematicians, Statisticians and Actuaries	19	1.6	1.7	2.2	1.7
C061.2161 Mathematicians, Statisticians and Actuaries	19	1.5	1.4	2.6	1.5
C07.217 Computer and Information Systems Professionals	1,335	1.6	1.5	2.5	1.6
C071.2171 Information Systems Analysts and Consultants	427	1.5	1.5	2.5	1.5
C072.2172 Database Analysts and Data Administrators	66	1.5	1.5	2.4	1.5
C073.2173 Software Engineers	177	1.5	1.6	2.5	1.6
C074.2174 Computer Programmers and Interactive Media Developers	482	1.7	1.5	2.5	1.6
C075.2175 Web Designers and Developers	181	1.5	1.6	2.4	1.6
C1 Technical occupations related to natural and applied sciences	2,460	1.7	1.8	1.6	1.8
C11.221 Technical Occupations in Physical Sciences	118	2.1	1.9	2.3	2.0
C111.2211 Chemical Technologists and Technicians	48	1.7	1.4	1.9	1.5
C112.2212 Geological and Mineral Technologists and Technicians	65	2.5	2.3	2.6	2.5
C113.2213 Meteorological Technicians	-	-	-	-	-
C12.222 Technical Occupations in Life Sciences	506	1.4	0.6	1.1	1.0
C121.2221 Biological Technologists and Technicians	80	1.2	1.0	2.4	1.1
C122.2222 Agricultural and Fish Products Inspectors	21	1.1	0.9	1.7	1.0
C123.2223 Forestry Technologists and Technicians	318	1.4	0.2	0.7	0.8
C124.2224 Conservation and Fishery Officers	42	1.0	0.9	1.0	1.0
C125.2225 Landscape and Horticultural Technicians and Specialists	45	1.4	1.5	1.5	1.5
C13.223 Technical Occupations in Civil, Mechanical and Industrial Engineering	241	2.1	4.4	-1.6	3.4
C131.2231 Civil Engineering Technologists and Technicians	60	1.7	2.6	0.2	2.2

Thompson Rivers College Region

Projected Annual Growth Rates in Occupational Demand

	Estimated Employment	Average Annual % Change			Avg Annual % Chg Over 4 Years
	<u>2005</u>	<u>2007/2005</u>	<u>2009/2007</u>	<u>2010/2009</u>	<u>2009/2005</u>
C132.2232 Mechanical Engineering Technologists and Technicians	44	2.8	2.6	1.5	2.8
C133.2233 Industrial Engineering and Manufacturing Technologists and Technicians	28	1.7	2.2	2.3	2.0
C134.2234 Construction Estimators	109	2.6	6.7	-4.5	4.8
C14.224 Technical Occupations in Electronics & Electrical Engineering	430	1.6	1.9	2.5	1.8
C141.2241 Electrical and Electronics Engineering Technologists and Technicians	127	1.5	1.7	2.9	1.6
C142.2242 Electronic Service Technicians (Household and Business Equipment)	236	1.4	2.0	2.6	1.7
C143.2243 Industrial Instrument Technicians and Mechanics	42	3.8	1.8	1.2	2.9
C144.2244 Aircraft Instrument Electrical and Avionics Mechanics, Technicians and Inspectors	27	2.0	2.1	2.4	2.1
C15.225 Technical Occupations in Architecture, Drafting, Surveying and Mapping	335	1.7	1.9	1.8	1.8
C151.2251 Architectural Technologists and Technicians	36	1.6	2.2	1.6	1.9
C152.2252 Industrial Designers	27	1.6	2.2	2.5	1.9
C153.2253 Drafting Technologists and Technicians	177	1.9	2.1	1.9	2.0
C154.2254 Land Survey Technologists and Technicians	20	1.7	2.1	0.7	1.9
C155.2255 Mapping and Related Technologists and Technicians	77	1.3	1.2	2.0	1.3
C16.226 Other Technical Inspectors and Regulatory Officers	163	1.7	2.3	1.1	2.0
C161.2261 Nondestructive Testers and Inspectors	13	1.6	1.6	2.8	1.6
C162.2262 Engineering Inspectors and Regulatory Officers	23	1.5	1.6	2.3	1.6
C163.2263 Inspectors in Public and Environmental Health and Occupational Health and Safety	68	1.8	2.1	1.7	2.0
C164.2264 Construction Inspectors	57	1.6	2.8	-0.5	2.3
C17.227 Transportation Officers and Controllers	204	2.3	2.1	2.1	2.2
C171.2271 Air Pilots, Flight Engineers and Flying Instructors	97	2.3	2.2	2.2	2.3
C172.2272 Air Traffic Control and Related Occupations	27	2.3	2.3	2.1	2.3
C173.2273 Deck Officers, Water Transport	38	2.1	1.9	1.8	2.0
C174.2274 Engineer Officers, Water Transport	14	1.9	2.1	2.3	2.0

Thompson Rivers College Region

Projected Annual Growth Rates in Occupational Demand

	Estimated Employment	Average Annual % Change			Avg Annual % Chg Over 4 Years
	<u>2005</u>	<u>2007/2005</u>	<u>2009/2007</u>	<u>2010/2009</u>	<u>2009/2005</u>
C175.2275 Railway Traffic Controllers and Marine Traffic Regulators	24	2.3	2.2	2.1	2.3
C18.228 Technical Occupations in Computer and Information Systems	458	1.7	1.3	2.6	1.5
C181.2281 Computer and Network Operators and Web Technicians	240	1.9	1.4	2.6	1.6
C182.2282 User Support Technicians	180	1.7	1.3	2.6	1.5
C183.2283 Systems Testing Technicians	36	1.5	1.5	2.7	1.5
D Health occupations	4,384	2.8	2.7	4.4	2.8
D0 Professional occupations in health	1,024	2.7	2.5	4.5	2.7
D01.311 Physicians Dentists and Veterinarians	516	2.9	2.8	4.3	2.9
D011.3111 Specialist Physicians	113	3.0	2.9	4.4	3.0
D012.3112 General Practitioners and Family Physicians	240	3.0	2.9	4.4	3.1
D013.3113 Dentists	120	3.0	2.9	4.4	3.1
D014.3114 Veterinarians	43	1.5	1.7	2.4	1.6
D02.312 Optometrists, Chiropractors and Other Health Diagnosing and Treating Professionals	68	2.9	2.8	4.5	3.0
D021.3121 Optometrists	18	2.9	2.7	4.6	2.9
D022.3122 Chiropractors	34	3.0	2.9	4.4	3.1
D023.3123 Other Professional Occupations in Health Diagnosing and Treating	16	2.8	2.7	4.6	2.8
D03.313 Pharmacists, Dietitians and Nutritionists	203	1.9	1.4	5.2	1.7
D031.3131 Pharmacists	159	1.7	1.1	5.5	1.4
D032.3132 Dietitians and Nutritionists	43	2.7	2.6	4.4	2.8
D04.314 Therapy and Assessment Professionals	236	2.9	2.8	4.2	2.9
D041.3141 Audiologists and Speech-Language Pathologists	36	2.4	2.2	3.3	2.4
D042.3142 Physiotherapists	104	3.0	2.9	4.4	3.1
D043.3143 Occupational Therapists	56	3.0	2.9	4.4	3.0
D044.3144 Other Professional Occupations in Therapy and Assessment	39	2.8	2.7	4.1	2.8
D1 Nurse supervisors and registered nurses	1,144	3.0	2.9	4.4	3.0
D11.315 Nurse Supervisors and Registered Nurses	1,144	3.0	2.9	4.4	3.0
D111.3151 Head Nurses and Supervisors	39	2.9	2.8	4.3	2.9
D112.3152 Registered Nurses	1,104	3.0	2.9	4.4	3.0

Thompson Rivers College Region

Projected Annual Growth Rates in Occupational Demand

	Estimated Employment	Average Annual % Change			Avg Annual % Chg Over 4 Years
	<u>2005</u>	<u>2007/2005</u>	<u>2009/2007</u>	<u>2010/2009</u>	<u>2009/2005</u>
D2 Technical and related occupations in health	1,106	2.6	2.6	4.2	2.7
D21.321 Medical Technologists and Technicians (Except Dental Health)	423	2.7	2.6	4.1	2.7
D211.3211 Medical Laboratory Technologists and Pathologists' Assistants	127	2.8	2.7	4.2	2.9
D212.3212 Medical Laboratory Technicians	98	2.8	2.7	4.3	2.9
D213.3213 Veterinary and Animal Health Technologists and Technicians	59	1.6	1.7	2.6	1.7
D214.3214 Respiratory Therapists, Clinical Perfusionists and Cardio- Pulmonary Technologists	29	2.9	2.8	4.4	2.9
D215.3215 Medical Radiation Technologists	67	3.0	2.9	4.4	3.0
D216.3216 Medical Sonographers	16	3.0	2.9	4.4	3.1
D217.3217 Cardiology Technologists	-	-	-	-	-
D218.3218 Electroencephalographic and Other Diagnostic Technologists n.e.c.	-	-	-	-	-
D219.3219 Other Medical Technologists and Technicians (Except Dental Health)	11	2.4	2.4	5.1	2.5
D22.322 Technical Occupations in Dental Health Care	120	2.7	2.8	4.8	2.8
D221.3221 Denturists	-	-	-	-	-
D222.3222 Dental Hygienists and Dental Therapists	76	3.0	2.9	4.5	3.1
D223.3223 Dental Technologists, Technicians and Laboratory Bench Workers	34	2.1	2.4	5.5	2.3
D23.323 Other Technical Occupations in Health Care (Except Dental)	563	2.6	2.5	4.2	2.6
D231.3231 Opticians	58	1.7	1.0	5.6	1.4
D232.3232 Midwives and Practitioners of Natural Healing	45	2.7	2.5	4.6	2.7
D233.3233 Licensed Practical Nurses	233	3.0	2.9	4.4	3.0
D234.3234 Ambulance Attendants and Other Paramedical Occupations	138	2.3	2.4	3.0	2.4
D235.3235 Other Technical Occupations in Therapy and Assessment	90	2.3	2.3	4.7	2.3
D3 Assisting occupations in support of health services	1,109	2.8	2.7	4.5	2.8
D31.341 Assisting Occupations in Support of Health Services	1,111	2.8	2.7	4.5	2.8
D311.3411 Dental Assistants	186	3.0	2.9	4.4	3.0
D312.3413 Nurse Aides, Orderlies and Patient Service Associates	670	3.0	2.9	4.4	3.0

Thompson Rivers College Region

Projected Annual Growth Rates in Occupational Demand

	Estimated Employment	Average Annual % Change			Avg Annual % Chg Over 4 Years
	<u>2005</u>	<u>2007/2005</u>	<u>2009/2007</u>	<u>2010/2009</u>	<u>2009/2005</u>
D313.3414 Other Assisting Occupations in Support of Health Services	253	2.3	1.9	5.0	2.2
E Occupations in social science, education, government service & religion	6,702	1.5	1.2	1.9	1.4
E0 Judges, lawyers, psychologists, social workers, ministers of religion and policy and program officers	1,779	1.7	1.7	2.9	1.7
E01.411 Judges, Lawyers and Quebec Notaries	445	1.5	1.6	2.3	1.6
E011.4111 Judges	11	0.9	0.9	0.8	0.9
E012.4112 Lawyers and Quebec Notaries	434	1.5	1.6	2.4	1.6
E02.415 Psychologists, Social Workers, Counsellors, Clergy and Probation Officers	680	1.9	1.9	3.8	2.0
E021.4151 Psychologists	74	2.4	2.2	3.3	2.4
E022.4152 Social Workers	216	2.2	2.2	3.3	2.2
E023.4153 Family, Marriage and Other Related Counsellors	192	2.6	2.5	4.2	2.6
E024.4154 Ministers of Religion	162	0.7	0.9	5.0	0.8
E025.4155 Probation and Parole Officers and Related Occupations	36	1.1	1.1	1.2	1.1
E03 Policy and program officers, researchers and consultants	660	1.6	1.5	2.3	1.6
E031.4161 Natural and Applied Science Policy Researchers, Consultants and Program Officers	80	1.5	1.5	2.2	1.5
E032.4162 Economists and Economic Policy Researchers and Analysts	29	1.3	1.2	1.9	1.3
E033.4163 Business Development Officers and Marketing Researchers and Consultants	172	1.8	1.5	2.6	1.7
E034.4164 Social Policy Researchers, Consultants & Program Officers	109	1.4	1.4	2.3	1.5
E035.4166 Education Policy Researchers Consultants & Program Officers	64	1.0	0.7	0.9	0.9
E036.4167 Recreation, Sports and Fitness Program Supervisors and Consultants	73	1.8	1.8	2.8	1.8
E037.4168 Program Officers Unique to Government	32	0.9	0.9	0.8	0.9
E038.4169 Other Professional Occupations in Social Science	21	1.4	1.3	2.0	1.4
E039.4165 Health Policy Researchers, Consultants & Program Officers	74	2.0	2.0	3.2	2.0
E1 Teachers and professors	3,172	0.9	0.4	0.4	0.7
E11.412 University Professors and Assistants	422	0.9	0.4	0.4	0.7

Thompson Rivers College Region

Projected Annual Growth Rates in Occupational Demand

	Estimated Employment	Average Annual % Change			Avg Annual % Chg Over 4 Years
	<u>2005</u>	<u>2007/2005</u>	<u>2009/2007</u>	<u>2010/2009</u>	<u>2009/2005</u>
E111.4121 University Professors	212	0.9	0.4	0.3	0.7
E112.4122 Post-Secondary Teaching and Research Assistants	209	1.0	0.5	0.4	0.7
E12.413 College and Other Vocational Instructors	501	1.0	0.5	0.7	0.8
E121.4131 College and Other Vocational Instructors	503	1.0	0.5	0.7	0.8
E13.414 Secondary and Elementary School Teachers and Educational Counsellors	2,247	0.9	0.4	0.3	0.7
E131.4141 Secondary School Teachers	889	0.9	0.4	0.3	0.7
E132.4142 Elementary School and Kindergarten Teachers	1,238	0.9	0.4	0.3	0.7
E133.4143 Educational Counsellors	119	1.0	0.5	0.5	0.7
E2 Paralegals, social services workers and occupations in education and religion n.e.c.	1,752	2.2	2.1	3.4	2.2
E21.421 Paralegals, Social Services Workers and Occupations in Education and Religion n.e.c.	1,752	2.2	2.1	3.4	2.2
E211.4211 Paralegal and Related Occupations	177	1.5	1.6	2.4	1.6
E212.4212 Community and Social Service Workers	503	2.3	2.2	3.7	2.3
E213.4213 Employment Counsellors	74	1.9	1.8	2.9	1.8
E214.4215 Instructors and Teachers of Persons with Disabilities	52	1.6	1.2	1.7	1.4
E215.4216 Other Instructors	211	1.0	0.6	0.7	0.8
E216.4217 Other Religious Occupations	34	0.7	0.9	4.7	0.8
E217.4214 Early Childhood Educators and Assistants	700	2.8	2.7	4.3	2.9
F Occupations in art, culture, recreation and sport	2,346	1.4	1.3	1.9	1.4
F0 Professional Occupations in Art and Culture	981	1.4	1.2	1.4	1.3
F01 Librarians, archivists, conservators and curators	68	1.4	1.3	1.2	1.4
F011.5111 Librarians	49	1.4	1.2	1.1	1.4
F012.5112 Conservators and Curators	12	1.5	1.6	0.7	1.6
F013.5113 Archivists	-	-	-	-	-
F02.512 Writing, Translating and Public Relations Professionals	392	1.5	1.4	2.0	1.5
F021.5121 Authors and Writers	121	1.5	1.4	1.6	1.5
F022.5122 Editors	51	1.5	1.3	1.4	1.4
F023.5123 Journalists	39	1.6	1.4	1.2	1.5

Thompson Rivers College Region

Projected Annual Growth Rates in Occupational Demand

	Estimated Employment	Average Annual % Change			Avg Annual % Chg Over 4 Years
	<u>2005</u>	<u>2007/2005</u>	<u>2009/2007</u>	<u>2010/2009</u>	<u>2009/2005</u>
F024.5124 Professional Occupations in Public Relations and Communications	131	1.4	1.4	2.6	1.4
F025.5125 Translators, Terminologists and Interpreters	51	1.5	1.6	2.2	1.6
F03.513 Creative and Performing Artists	521	1.3	1.0	1.0	1.2
F031.5131 Producers, Directors, Choreographers & Related Occupations	99	1.5	1.3	1.2	1.5
F032.5132 Conductors, Composers and Arrangers	16	1.5	1.3	1.9	1.4
F033.5133 Musicians and Singers	196	1.1	0.7	0.8	0.9
F034.5134 Dancers	45	1.0	0.6	0.6	0.8
F035.5135 Actors and Comedians	58	1.6	1.3	1.1	1.5
F036.5136 Painters, Sculptors and Other Visual Artists	107	1.5	1.3	1.3	1.4
F1 Technical occupations in art, culture, recreation and sport	1,364	1.5	1.5	2.2	1.5
F11.521 Technical Occupations in Libraries, Archives, Museums and Art Galleries	93	1.4	1.3	0.9	1.4
F111.5211 Library and Archive Technicians and Assistants	73	1.4	1.1	1.0	1.2
F112.5212 Technical Occupations Related to Museums and Art Galleries	21	1.6	2.1	0.5	1.9
F12.522 Photographers, Graphic Arts Technicians & Technical & coordinating Occupations in Motion Pictures, Broadcasting & Performing Arts	276	1.5	1.5	1.7	1.5
F121.5221 Photographers	82	1.5	1.6	2.4	1.6
F122.5222 Film and Video Camera Operators	23	1.6	1.4	1.2	1.5
F123.5223 Graphic Arts Technicians	22	1.5	1.8	2.2	1.7
F124.5224 Broadcast Technicians	11	1.7	1.5	1.5	1.6
F125.5225 Audio and Video Recording Technicians	34	1.5	1.4	1.5	1.5
F126.5226 Other Technical and Co-ordinating Occupations in Motion Pictures, Broadcasting and the Performing Arts	49	1.5	1.3	1.4	1.4
F127.5227 Support Occupations in Motion Pictures, Broadcasting and the Performing Arts	55	1.6	1.4	1.1	1.5
F13.523 Announcers and Other Performers	63	1.7	1.7	2.2	1.7
F131.5231 Announcers and Other Broadcasters	47	1.7	1.6	2.0	1.7
F132.5232 Other Performers	15	1.7	1.8	2.7	1.8
F14.524 Creative Designers and Craftspersons	534	1.5	1.6	3.1	1.6

Thompson Rivers College Region

Projected Annual Growth Rates in Occupational Demand

	Estimated Employment	Average Annual % Change			Avg Annual % Chg Over 4 Years
	<u>2005</u>	<u>2007/2005</u>	<u>2009/2007</u>	<u>2010/2009</u>	<u>2009/2005</u>
F141.5241 Graphic Designers and Illustrators	241	1.5	1.6	2.6	1.6
F142.5242 Interior Designers	83	1.7	2.2	1.9	2.0
F143.5243 Theatre, Fashion, Exhibit and Other Creative Designers	52	1.5	1.5	2.9	1.5
F144.5244 Artisans and Craftspersons	152	1.3	1.3	4.4	1.4
F145.5245 Patternmakers - Textile, Leather and Fur Products	-	-	-	-	-
F15.525 Athletes, Coaches, Referees and Related Occupations	398	1.4	1.2	1.7	1.3
F151.5251 Athletes	14	1.6	1.1	0.8	1.4
F152.5252 Coaches	53	1.2	0.8	0.9	1.0
F153.5253 Sports Officials and Referees	29	1.3	1.2	2.0	1.3
F154.5254 Program Leaders and Instructors in Recreation and Sport	301	1.4	1.3	1.8	1.4
G Sales and service occupations	20,393	1.8	1.8	5.1	1.9
G0 Sales and service supervisors	614	1.9	2.0	5.6	2.0
G01.621 Sales and Service Supervisors	614	1.9	2.0	5.6	2.0
G011.6211 Retail Trade Supervisors	281	1.5	0.9	5.5	1.2
G012.6212 Food Service Supervisors	226	2.5	3.2	6.2	2.9
G013.6213 Executive Housekeepers	27	2.5	3.2	6.2	2.9
G014.6214 Dry Cleaning and Laundry Supervisors	-	-	-	-	-
G015.6215 Cleaning Supervisors	23	1.8	2.0	3.2	1.9
G016.6216 Other Service Supervisors	49	2.0	2.4	3.6	2.3
G1 Wholesale, technical, insurance, real estate sales specialists and retail, wholesale and grain buyers	1,297	1.3	1.2	4.1	1.3
G11.641 Sales Representatives, Wholesale Trade	670	1.3	1.4	4.1	1.4
G111.6411 Sales Representatives - Wholesale Trade (Non-Technical)	673	1.3	1.4	4.1	1.4
G12.622 Technical Sales Specialists, Wholesale Trade	213	1.3	1.6	3.6	1.5
G121.6221 Technical Sales Specialists - Wholesale Trade	212	1.3	1.6	3.6	1.5
G13.623 Insurance and Real Estate Sales Occupations and Buyers	413	1.3	0.8	4.3	1.1
G131.6231 Insurance Agents and Brokers	278	1.3	0.4	4.6	0.9
G132.6232 Real Estate Agents and Salespersons	19	2.1	4.3	-1.4	3.3
G133.6233 Retail and Wholesale Buyers	113	1.4	1.0	4.9	1.2
G134.6234 Grain Elevator Operators	-	-	-	-	-

Thompson Rivers College Region

Projected Annual Growth Rates in Occupational Demand

	Estimated Employment	Average Annual % Change			Avg Annual % Chg Over 4 Years
	<u>2005</u>	<u>2007/2005</u>	<u>2009/2007</u>	<u>2010/2009</u>	<u>2009/2005</u>
G2 Retail salespersons and sales clerks	3,631	1.4	0.8	5.4	1.2
G21.642 Retail Salespersons and Sales Clerks	3,631	1.4	0.9	5.4	1.2
G211.6421 Retail Salespersons and Sales Clerks	3,631	1.4	0.8	5.4	1.2
G3 Cashiers	1,647	1.6	1.1	5.6	1.3
G31.661 Cashiers	1,648	1.6	1.1	5.7	1.3
G311.6611 Cashiers	1,648	1.6	1.1	5.7	1.3
G4 Chefs and cooks	1,637	2.5	3.1	6.2	2.9
G41.624 Chefs and Cooks	1,637	2.5	3.1	6.2	2.9
G411.6241 Chefs	305	2.4	3.1	6.3	2.9
G412.6242 Cooks	1,333	2.5	3.1	6.2	2.9
G5 Occupations in food and beverage service	2,101	2.5	3.2	6.5	2.9
G51.645 Occupations in Food and Beverage Service	2,100	2.5	3.2	6.5	2.9
G511.6451 Maîtres d'hôtel and Hosts/Hostesses	188	2.4	3.2	6.4	2.9
G512.6452 Bartenders	284	2.4	3.1	6.3	2.8
G513.6453 Food and Beverage Servers	1,629	2.5	3.3	6.5	3.0
G6 Occupations in protective services	919	1.1	1.0	1.5	1.1
G61.626 Police Officers and Fire-fighters	426	0.9	0.9	0.8	0.9
G611.6261 Police Officers (Except Commissioned)	282	0.9	0.9	0.8	0.9
G612.6262 Fire-fighters	146	0.9	0.9	0.9	0.9
G62.646 Other Occupations in Protective Service	357	1.0	1.0	1.4	1.0
G621.6461 Sheriffs and Bailiffs	25	1.1	1.1	1.2	1.1
G622.6462 Correctional Service Officers	113	1.0	1.0	0.8	1.0
G623.6463 By-law Enforcement and Other Regulatory Officers n.e.c.	38	1.1	1.1	2.1	1.1
G624.6464 Other Ranks Armed Forces	134	0.9	0.9	0.8	0.9
G625.6465 Other Protective Service Occupations	46	1.4	1.2	3.8	1.3
G63.665 Security Guards and Related Occupations	135	1.6	1.6	3.7	1.6
G631.6651 Security Guards and Related Occupations	136	1.6	1.6	3.7	1.6
G7 Occupations in travel and accommodation including attendants in recreation and sport	709	2.3	2.5	3.8	2.5
G71.643 Occupations in Travel and Accommodation	444	2.5	2.9	4.5	2.8

Thompson Rivers College Region

Projected Annual Growth Rates in Occupational Demand

	Estimated Employment	Average Annual % Change			Avg Annual % Chg Over 4 Years
	<u>2005</u>	<u>2007/2005</u>	<u>2009/2007</u>	<u>2010/2009</u>	<u>2009/2005</u>
G711.6431 Travel Counsellors	19	1.8	1.9	3.2	1.9
G712.6432 Purser and Flight Attendants	108	2.6	2.6	2.6	2.7
G713.6433 Airline Sales and Service Agents	90	2.5	2.6	2.5	2.7
G714.6434 Ticket Agents, Cargo Service Representatives and Related Clerks (Except Airline)	24	2.5	2.5	2.6	2.6
G715.6435 Hotel Front Desk Clerks	204	2.5	3.3	6.6	3.0
G72.644 Tour and Recreational Guides and Casino Occupations	131	1.8	1.7	2.1	1.8
G721.6441 Tour and Travel Guides	31	1.9	2.0	2.7	2.0
G722.6442 Outdoor Sport and Recreational Guides	37	2.0	2.0	3.3	2.1
G723.6443 Casino Occupations	65	1.6	1.4	1.1	1.5
G73.667 Other Occupations in Travel, Accommodation, Amusement and Recreation	131	2.0	2.1	3.1	2.1
G731.6671 Operators and Attendants in Amusement, Recreation and Sport	78	1.6	1.5	1.7	1.5
G732.6672 Other Attendants in Accommodation and Travel	53	2.5	3.0	5.0	2.8
G8 Childcare and home support workers	1,621	1.8	1.6	3.3	1.7
G81.647 Childcare and Home Support Workers	1,620	1.8	1.6	3.3	1.7
G811.6471 Visiting Homemakers, Housekeepers & Related Occupations	577	2.7	2.7	4.4	2.8
G812.6472 Elementary and Secondary School Teacher Assistants	512	0.9	0.4	0.3	0.7
G814.6474 Babysitters, Nannies and Parents' Helpers	535	1.5	1.6	4.8	1.6
G9 Sales and service occupations n.e.c.	6,220	1.8	2.0	5.3	2.0
G91.627 Technical Occupations in Personal Service	440	0.6	0.8	5.1	0.7
G911.6271 Hairstylists and Barbers	423	0.6	0.8	5.1	0.7
G912.6272 Funeral Directors and Embalmers	18	0.6	0.8	5.1	0.7
G92.648 Other Occupations in Personal Service	248	0.8	0.9	4.9	0.9
G921.6481 Image, Social and Other Personal Consultants	17	1.1	0.9	4.9	1.0
G922.6482 Estheticians, Electrologists and Related Occupations	141	0.8	0.8	5.1	0.8
G923.6483 Pet Groomers and Animal Care Workers	79	0.8	0.9	4.6	0.9
G924.6484 Other Personal Service Occupations	11	0.8	0.9	4.4	0.9
G93.666 Cleaners	1,486	1.9	2.2	4.1	2.1

Thompson Rivers College Region

Projected Annual Growth Rates in Occupational Demand

	Estimated Employment	Average Annual % Change			Avg Annual % Chg Over 4 Years
	<u>2005</u>	<u>2007/2005</u>	<u>2009/2007</u>	<u>2010/2009</u>	<u>2009/2005</u>
G931.6661 Light Duty Cleaners	649	2.4	2.9	5.5	2.7
G932.6662 Specialized Cleaners	147	1.4	1.6	3.8	1.5
G933.6663 Janitors, Caretakers and Building Superintendents	689	1.7	1.7	2.7	1.7
G94.625 Butchers and Bakers	389	1.8	1.2	5.3	1.5
G941.6251 Butchers and Meat Cutters - Retail and Wholesale	159	1.4	0.8	5.7	1.1
G942.6252 Bakers	230	2.1	1.5	5.0	1.8
G96.664 Food Counter Attendants, Kitchen Helpers and Related Occupations	2,043	2.5	3.2	6.3	2.9
G961.6641 Food Counter Attendants, Kitchen Helpers and Related Occupations	2,042	2.5	3.2	6.3	2.9
G97.662 Other Sales and Related Occupations	1,375	1.4	0.8	5.6	1.1
G971.6621 Service Station Attendants	217	1.4	0.7	5.7	1.1
G972.6622 Grocery Clerks and Store Shelf Stockers	856	1.4	0.7	5.7	1.1
G973.6623 Other Elemental Sales Occupations	300	1.5	1.0	5.0	1.3
G98.668 Other Elemental Service Occupations	240	1.4	1.6	4.7	1.5
G981.6681 Dry Cleaning and Laundry Occupations	114	1.6	1.8	5.0	1.7
G982.6682 Ironing, Pressing and Finishing Occupations	22	1.0	1.2	5.2	1.1
G983.6683 Other Elemental Service Occupations	104	1.3	1.4	4.3	1.3
H Trades, transport and equipment operators and related occupations	14,466	2.1	3.8	-0.3	3.0
H0 Contractors and supervisors in trades and transportation	791	2.4	5.2	-2.4	3.9
H01.721 Contractors and Supervisors, Trades and Related Workers	696	2.4	5.6	-3.0	4.2
H011.7211 Supervisors, Machinists and Related Occupations	13	1.3	1.8	4.2	1.6
H012.7212 Contractors and Supervisors, Electrical Trades and Telecommunications Occupations	74	2.4	5.6	-3.1	4.1
H013.7213 Contractors and Supervisors, Pipefitting Trades	36	2.8	6.4	-4.4	4.8
H014.7214 Contractors and Supervisors, Metal Forming, Shaping and Erecting Trades	37	2.1	4.6	-1.0	3.5
H015.7215 Contractors and Supervisors, Carpentry Trades	106	2.7	7.0	-4.9	5.0
H016.7216 Contractors and Supervisors, Mechanic Trades	86	1.6	2.1	2.5	1.9

Thompson Rivers College Region

Projected Annual Growth Rates in Occupational Demand

	Estimated Employment	Average Annual % Change			Avg Annual % Chg Over 4 Years
	<u>2005</u>	<u>2007/2005</u>	<u>2009/2007</u>	<u>2010/2009</u>	<u>2009/2005</u>
H017.7217 Contractors and Supervisors, Heavy Construction Equipment Crews	179	2.6	5.8	-3.5	4.4
H018.7218 Supervisors, Printing and Related Occupations	19	1.2	1.5	5.0	1.4
H019.7219 Contractors and Supervisors, Other Construction Trades, Installers, Repairers and Servicers	147	2.8	7.2	-5.3	5.2
H02.722 Supervisors, Railway and Motor Transportation Occupations	93	2.4	2.3	2.2	2.4
H021.7221 Supervisors, Railway Transport Operations	58	2.6	2.4	2.3	2.6
H022.7222 Supervisors, Motor Transport & Other Ground Transit Operators	36	2.0	2.0	2.2	2.0
H1 Construction trades	3,050	2.7	6.8	-4.7	4.9
H11.725 Plumbers, Pipefitters and Gas Fitters	457	2.7	6.3	-4.3	4.7
H111.7251 Plumbers	281	2.7	7.0	-5.0	5.1
H112.7252 Steamfitters, Pipefitters and Sprinkler System Installers	131	2.9	5.1	-2.9	4.2
H113.7253 Gas Fitters	47	2.4	5.6	-3.3	4.2
H12.727 Carpenters and Cabinetmakers	1,304	2.6	6.5	-4.3	4.7
H121.7271 Carpenters	1,201	2.7	6.8	-4.8	4.9
H122.7272 Cabinetmakers	103	1.6	3.5	1.9	2.6
H13.728 Masonry and Plastering Trades	473	2.9	7.5	-5.7	5.4
H131.7281 Bricklayers	78	2.8	7.4	-5.5	5.3
H132.7282 Concrete Finishers	76	2.8	7.3	-5.4	5.2
H133.7283 Tilesetters	64	2.9	7.6	-5.8	5.5
H134.7284 Plasterers, Drywall Installers and Finishers and Lathers	255	2.9	7.6	-5.8	5.5
H14.729 Other Construction Trades	815	2.7	7.0	-5.0	5.1
H141.7291 Roofers and Shinglers	161	2.8	7.5	-5.6	5.4
H142.7292 Glaziers	75	2.2	5.3	-2.3	3.9
H143.7293 Insulators	52	2.8	7.0	-5.2	5.1
H144.7294 Painters and Decorators	393	2.8	7.1	-5.2	5.1
H145.7295 Floor Covering Installers	138	2.8	7.1	-5.0	5.1
H2 Stationary engineers, power station operators and electrical trades and telecommunications occupations	1,020	2.2	4.3	-1.6	3.3

Thompson Rivers College Region

Projected Annual Growth Rates in Occupational Demand

	Estimated Employment	Average Annual % Change			Avg Annual % Chg Over 4 Years
	<u>2005</u>	<u>2007/2005</u>	<u>2009/2007</u>	<u>2010/2009</u>	<u>2009/2005</u>
	H21.724 Electrical Trades and Telecommunications Occupations	927	2.2	4.6	-2.0
H211.7241 Electricians (Except Industrial and Power System)	451	2.6	6.5	-4.5	4.7
H212.7242 Industrial Electricians	234	1.8	2.7	1.4	2.3
H213.7243 Power System Electricians	16	1.9	3.1	-0.8	2.5
H214.7244 Electrical Power Line and Cable Workers	36	2.0	3.5	-1.1	2.8
H215.7245 Telecommunications Line and Cable Workers	55	2.0	3.2	-0.9	2.7
H216.7246 Telecommunications Installation and Repair Workers	102	1.6	1.9	1.0	1.8
H217.7247 Cable Television Service and Maintenance Technicians	31	1.9	3.0	-0.7	2.5
H22.735 Stationary Engineers and Power Station and System Operators	92	1.8	1.6	2.4	1.7
H221.7351 Stationary Engineers and Auxiliary Equipment Operators	77	1.9	1.6	2.3	1.7
H222.7352 Power Systems and Power Station Operators	14	1.8	1.8	2.4	1.8
H3 Machinists, metal forming, shaping and erecting occupations	746	1.9	3.4	1.0	2.7
H31.723 Machinists and Related Occupations	127	1.4	1.8	4.7	1.6
H311.7231 Machinists and Machining and Tooling Inspectors	113	1.4	1.7	4.7	1.6
H312.7232 Tool and Die Makers	11	1.2	1.6	5.4	1.4
H32.726 Metal Forming, Shaping and Erecting Trades	620	2.0	3.8	0.3	3.0
H321.7261 Sheet Metal Workers	98	2.4	6.0	-3.0	4.3
H322.7262 Boilermakers	18	1.7	3.5	0.7	2.7
H323.7263 Structural Metal and Platework Fabricators and Fitters	59	1.4	2.2	4.1	1.9
H324.7264 Ironworkers	61	2.6	6.5	-4.0	4.7
H325.7266 Blacksmiths and Die Setters	-	-	-	-	-
H326.7265 Welders and Related Machine Operators	383	1.9	3.0	1.2	2.5
H4 Mechanics	2,169	1.4	1.7	3.2	1.6
H41.731 Machinery and Transportation Equipment Mechanics (Except Motor Vehicle)	1,205	1.7	2.2	2.1	2.0
H411.7311 Construction Millwrights and Industrial Mechanics (Except Textile)	479	1.3	1.6	3.2	1.5
H412.7312 Heavy-Duty Equipment Mechanics	427	1.7	1.7	2.1	1.7
H413.7313 Refrigeration and Air Conditioning Mechanics	70	2.3	5.6	-3.0	4.1
H414.7314 Railway Carmen/women	82	2.6	2.4	2.3	2.6

Thompson Rivers College Region

Projected Annual Growth Rates in Occupational Demand

	Estimated Employment	Average Annual % Change			Avg Annual % Chg Over 4 Years
	<u>2005</u>	<u>2007/2005</u>	<u>2009/2007</u>	<u>2010/2009</u>	<u>2009/2005</u>
H415.7315 Aircraft Mechanics and Aircraft Inspectors	96	2.3	2.4	2.7	2.4
H416.7316 Machine Fitters	18	1.3	1.7	4.2	1.5
H417.7317 Textile Machinery Mechanics and Repairers	0	-	-	-	-
H418.7318 Elevator Constructors and Mechanics	32	2.9	7.5	-5.7	5.4
H42.732 Automotive service technicians	837	1.0	1.0	4.8	1.0
H421.7321 Automotive Service Technicians, Truck Mechanics and Mechanical Repairers	641	1.1	1.0	4.7	1.0
H422.7322 Motor Vehicle Body Repairers	194	0.8	0.9	5.1	0.8
H43.733 Other Mechanics	128	1.6	1.6	3.8	1.7
H431.7331 Oil and Solid Fuel Heating Mechanics	-	-	-	-	-
H432.7332 Electric Appliance Servicers and Repairers	57	1.1	1.5	4.2	1.3
H433.7333 Electrical Mechanics	18	1.3	2.1	4.0	1.8
H434.7334 Motorcycle and Other Related Mechanics	14	1.0	0.9	5.2	1.0
H435.7335 Other Small Engine and Equipment Mechanics	30	1.1	1.2	4.7	1.2
H5 Other trades n.e.c.	693	1.4	2.4	2.4	2.0
H51.734 Upholsterers, Tailors, Shoe Repairers, Jewellers and Related Occupations	146	1.1	1.2	5.3	1.2
H511.7341 Upholsterers	28	0.9	1.1	5.2	1.0
H512.7342 Tailors, Dressmakers, Furriers and Milliners	90	1.2	1.4	5.4	1.3
H513.7343 Shoe Repairers and Shoemakers	-	-	-	-	-
H514.7344 Jewellers, Watch Repairers and Related Occupations	20	1.1	1.0	5.4	1.1
H52.738 Printing Press Operators, Commercial Divers and Other Trades and Related Occupations n.e.c.	187	0.9	1.3	4.3	1.1
H521.7381 Printing Press Operators	60	1.4	1.7	4.2	1.6
H522.7382 Commercial Divers	-	-	-	-	-
H523.7383 Other Trades and Related Occupations	123	0.7	1.1	4.4	0.9
H53.744 Other installers, repairers and servicers	359	1.9	3.5	0.4	2.8
H531.7441 Residential and Commercial Installers and Servicers	161	2.5	6.3	-3.8	4.6
H532.7442 Waterworks and Gas Maintenance Workers	21	1.8	2.0	0.3	2.0
H533.7443 Automotive Mechanical Installers and Servicers	79	1.2	0.9	4.8	1.1

Thompson Rivers College Region

Projected Annual Growth Rates in Occupational Demand

	Estimated Employment	Average Annual % Change			Avg Annual % Chg Over 4 Years
	<u>2005</u>	<u>2007/2005</u>	<u>2009/2007</u>	<u>2010/2009</u>	<u>2009/2005</u>
H534.7444 Pest Controllers and Fumigators	-	-	-	-	-
H535.7445 Other Repairers and Servicers	92	1.3	1.2	4.8	1.3
H6 Heavy equipment and crane operators including drillers	842	2.4	4.4	-1.7	3.5
H61.742 Heavy Equipment Operators	708	2.4	4.4	-1.8	3.5
H611.7421 Heavy Equipment Operators (Except Crane)	667	2.5	4.5	-1.9	3.6
H612.7422 Public Works Maintenance Equipment Operators	43	1.9	3.0	-0.3	2.5
H62.737 Crane Operators, Drillers and Blasters	132	2.3	4.4	-1.7	3.5
H621.7371 Crane Operators	73	2.1	4.2	-1.3	3.3
H622.7372 Drillers and Blasters - Surface Mining Quarrying and Construction	52	2.6	4.1	-1.4	3.5
H623.7373 Water Well Drillers	-	-	-	-	-
H7 Transportation equipment operators and related workers, excluding labourers	3,300	2.0	2.1	2.3	2.1
H71.741 Motor Vehicle and Transit Drivers	2,825	2.0	2.1	2.3	2.1
H711.7411 Truck Drivers	2,045	1.9	2.1	1.9	2.1
H712.7412 Bus Drivers and Subway and Other Transit Operators	247	2.2	2.2	2.2	2.2
H713.7413 Taxi and Limousine Drivers and Chauffeurs	129	2.5	2.6	2.4	2.6
H714.7414 Delivery and Courier Service Drivers	404	1.8	1.9	4.4	1.9
H72.736 Train Crew Operating Occupations	243	2.6	2.4	2.2	2.6
H721.7361 Railway and Yard Locomotive Engineers	123	2.6	2.4	2.2	2.6
H722.7362 Railway Conductors and Brakemen/women	120	2.6	2.4	2.3	2.6
H73.743 Other Transport Equipment Operators and Related Workers	231	2.3	2.2	2.1	2.3
H731.7431 Railway Yard Workers	26	2.6	2.4	2.3	2.6
H732.7432 Railway Track Maintenance Workers	79	2.6	2.4	2.2	2.6
H733.7433 Deck Crew Water Transport	30	1.6	1.5	2.0	1.6
H734.7434 Engine Room Crew, Water Transport	-	-	-	-	-
H735.7435 Lock and Cable Ferry Operators and Related Occupations	14	2.4	3.1	0.9	2.8
H736.7436 Boat Operators	25	1.7	0.9	1.6	1.3
H737.7437 Air Transport Ramp Attendants	54	3.4	2.4	2.4	3.0

Thompson Rivers College Region

Projected Annual Growth Rates in Occupational Demand

	Estimated Employment	Average Annual % Change			Avg Annual % Chg Over 4 Years
	<u>2005</u>	<u>2007/2005</u>	<u>2009/2007</u>	<u>2010/2009</u>	<u>2009/2005</u>
H8 Trades helpers, construction and transportation labourers and related occupations	1,854	2.0	3.6	0.0	2.9
H81.745 Longshore Workers and Material Handlers	979	1.4	1.5	3.7	1.5
H811.7451 Longshore Workers	89	2.6	2.2	2.7	2.5
H812.7452 Material Handlers	890	1.3	1.4	3.8	1.4
H82.761 Trades Helpers and Labourers	758	2.7	6.6	-4.4	4.8
H821.7611 Construction Trades Helpers and Labourers	706	2.7	6.9	-4.8	5.0
H822.7612 Other Trades Helpers and Labourers	52	1.5	2.5	1.5	2.0
H83.762 Public Works and Other Labourers n.e.c.	121	1.9	2.6	0.6	2.3
H831.7621 Public Works and Maintenance Labourers	69	1.6	2.7	-0.3	2.2
H832.7622 Railway and Motor Transport Labourers	50	2.3	2.5	2.1	2.5
I Occupations unique to primary industry	4,515	1.3	0.5	2.6	0.9
I0 Occupations unique to agriculture, excluding labourers	2,330	0.9	0.5	4.1	0.7
I01.825 Contractors, Operators and Supervisors in Agriculture, Horticulture and Aquaculture	1,276	0.9	0.5	4.1	0.7
I011.8251 Farmers and Farm Managers	1,001	0.9	0.4	4.3	0.6
I012.8252 Agricultural and Related Service Contractors and Managers	14	1.1	1.0	3.2	1.1
I013.8253 Farm Supervisors and Specialized Livestock Workers	74	1.0	0.6	3.8	0.8
I014.8254 Nursery and Greenhouse Operators and Managers	77	1.0	0.3	3.8	0.7
I015.8255 Landscaping & Grounds Maintenance Contractors & Managers	21	1.8	2.9	-0.1	2.4
I016.8256 Supervisors, Landscape and Horticulture	44	1.2	1.1	2.1	1.2
I017.8257 Aquaculture Operators and Managers	41	0.9	0.5	3.9	0.7
I02.843 Agriculture and Horticulture Workers	1,056	0.9	0.4	4.2	0.7
I021.8431 General Farm Workers	722	0.9	0.4	4.3	0.7
I022.8432 Nursery and Greenhouse Workers	334	1.0	0.4	4.0	0.7
I1 Occupations unique to forestry operations, mining, oil and gas extraction and fishing excluding labourers	1,230	1.9	0.5	0.6	1.2
I11.821 Supervisors, Logging and Forestry	173	1.4	0.1	0.7	0.7
I111.8211 Supervisors, Logging and Forestry	170	1.4	0.1	0.7	0.7
I12.822 Supervisors, Mining, Oil and Gas	97	2.9	2.5	2.6	2.8

Thompson Rivers College Region

Projected Annual Growth Rates in Occupational Demand

	Estimated Employment	Average Annual % Change			Avg Annual % Chg Over 4 Years
	<u>2005</u>	<u>2007/2005</u>	<u>2009/2007</u>	<u>2010/2009</u>	<u>2009/2005</u>
I121.8221 Supervisors, Mining and Quarrying	62	2.5	2.4	3.7	2.5
I122.8222 Supervisors, Oil and Gas Drilling and Service	34	3.5	2.8	0.6	3.2
I13.823 Underground Miners, Oil and Gas Drillers and Related Workers	108	3.2	2.4	2.9	2.9
I131.8231 Underground Production and Development Miners	80	2.6	2.4	3.5	2.5
I132.8232 Oil and Gas Well Drillers, Servicers, Testers and Related Workers	29	4.9	2.6	1.1	3.9
I14.841 Mine Service Workers and Operators in Oil and Gas Drilling	61	3.9	2.7	1.2	3.4
I141.8411 Underground Mine Service and Support Workers	28	2.5	2.6	2.9	2.6
I142.8412 Oil and Gas Well Drilling Workers and Services Operators	34	5.1	2.8	0.1	4.1
I15.824 Logging Machinery Operators	301	1.5	0.1	0.3	0.8
I151.8241 Logging Machinery Operators	300	1.5	0.0	0.3	0.8
I16.842 Logging and Forestry Workers	482	1.7	-0.2	-0.4	0.8
I161.8421 Chain-saw and Skidder Operators	318	1.7	-0.2	-0.5	0.7
I162.8422 Silviculture and Forestry Workers	164	1.6	-0.1	-0.3	0.8
I17.826 Fishing Vessel Masters and Skippers and Fishermen/women	-	-	-	-	-
I171.8261 Fishing Masters and Officers	-	-	-	-	-
I172.8262 Fishing Vessel Skippers and Fishermen/women	-	-	-	-	-
I18.844 Other Fishing and Trapping Occupations	-	-	-	-	-
I181.8441 Fishing Vessel Deckhands	-	-	-	-	-
I182.8442 Trappers and Hunters	0	-	-	-	-
I2 Primary production labourers	956	1.6	0.7	1.5	1.1
I21.861 Primary Production Labourers	955	1.6	0.7	1.5	1.1
I211.8611 Harvesting Labourers	113	0.9	0.4	4.2	0.6
I212.8612 Landscaping and Grounds Maintenance Labourers	222	1.4	1.7	1.9	1.6
I213.8613 Aquaculture and Marine Harvest Labourers	48	0.9	0.5	4.3	0.7
I214.8614 Mine Labourers	44	2.6	2.5	3.2	2.6
I215.8615 Oil and Gas Drilling, Servicing and Related Labourers	57	3.4	2.8	0.8	3.2
I216.8616 Logging and Forestry Labourers	471	1.5	-0.1	0.2	0.7
J Occupations unique to processing, manufacturing and utilities	4,517	1.2	1.2	4.2	1.2
J0 Supervisors in manufacturing	383	1.7	1.2	3.8	1.5

Thompson Rivers College Region

Projected Annual Growth Rates in Occupational Demand

	Estimated Employment	Average Annual % Change			Avg Annual % Chg Over 4 Years
	<u>2005</u>	<u>2007/2005</u>	<u>2009/2007</u>	<u>2010/2009</u>	<u>2009/2005</u>
J01.921 Supervisors, Processing Occupations	316	1.8	1.1	3.7	1.5
J011.9211 Supervisors, Mineral and Metal Processing	18	1.6	2.6	2.4	2.1
J012.9212 Supervisors, Petroleum, Gas and Chemical Processing and Utilities	24	13.0	1.4	0.1	7.4
J013.9213 Supervisors, Food, Beverage and Tobacco Processing	21	2.5	1.4	2.6	2.0
J014.9214 Supervisors, Plastic and Rubber Products Manufacturing	-	-	-	-	-
J015.9215 Supervisors, Forest Products Processing	246	0.7	0.9	4.4	0.8
J016.9216 Supervisors, Textile Processing	-	-	-	-	-
J02.922 Supervisors, Assembly and Fabrication	67	1.2	1.8	4.5	1.5
J021.9221 Supervisors, Motor Vehicle Assembling	-	-	-	-	-
J022.9222 Supervisors, Electronics Manufacturing	11	1.3	1.0	4.3	1.2
J023.9223 Supervisors, Electrical Products Manufacturing	-	-	-	-	-
J024.9224 Supervisors, Furniture and Fixtures Manufacturing	11	0.8	1.3	5.7	1.0
J025.9225 Supervisors, Fabric, Fur and Leather Products Manufacturing	-	-	-	-	-
J026.9226 Supervisors, Other Mechanical and Metal Products Manufacturing	13	1.6	2.7	3.5	2.2
J027.9227 Supervisors, Other Products Manufacturing and Assembly	21	1.0	1.8	4.0	1.4
J1 Machine operators in manufacturing	1,948	1.3	1.2	4.1	1.3
J11.923 Central Control and Process Operators in Manufacturing and Processing	112	7.1	1.6	-0.1	4.5
J111.9231 Central Control & Process Operators Mineral & Metal Processing	15	1.8	2.0	2.0	1.9
J112.9232 Petroleum, Gas and Chemical Process Operators	41	15.8	2.0	-1.5	9.2
J113.9233 Pulping Control Operators	20	2.3	1.5	0.3	1.9
J114.9234 Papermaking and Coating Control Operators	33	2.2	1.2	0.8	1.7
J12.941 Machine Operators and Related Workers in Metal and Mineral Products Processing	99	1.8	2.6	2.6	2.2
J121.9411 Machine Operators, Mineral and Metal Processing	38	1.9	2.2	2.8	2.1
J122.9412 Foundry Workers	11	1.2	1.4	1.3	1.3

Thompson Rivers College Region

Projected Annual Growth Rates in Occupational Demand

	Estimated Employment	Average Annual % Change			Avg Annual % Chg Over 4 Years
	<u>2005</u>	<u>2007/2005</u>	<u>2009/2007</u>	<u>2010/2009</u>	<u>2009/2005</u>
J123.9413 Glass Forming and Finishing Machine Operators and Glass Cutters	15	1.3	2.0	5.6	1.6
J124.9414 Concrete, Clay and Stone Forming Operators	33	2.1	3.9	1.2	3.1
J125.9415 Inspectors and Testers, Mineral and Metal Processing	-	-	-	-	-
J13.942 Machine Operators and Related Workers in Chemical, Plastic and Rubber Processing	40	1.5	1.5	2.6	1.5
J131.9421 Chemical Plant Machine Operators	-	-	-	-	-
J132.9422 Plastics Processing Machine Operators	-	-	-	-	-
J133.9423 Rubber Processing Machine Operators and Related Workers	-	-	-	-	-
J134.9424 Water and Waste Plant Operators	21	1.5	1.4	1.7	1.4
J14.943 Machine Operators and Related Workers in Pulp and Paper Production and Wood Processing	1,193	0.6	0.9	4.5	0.8
J141.9431 Sawmill Machine Operators	568	0.4	0.8	5.1	0.6
J142.9432 Pulp Mill Machine Operators	59	2.2	1.3	0.7	1.8
J143.9433 Papermaking and Finishing Machine Operators	38	2.0	1.3	1.0	1.7
J144.9434 Other Wood Processing Machine Operators	171	0.5	1.0	4.6	0.8
J145.9435 Paper Converting Machine Operators	27	2.0	1.2	1.3	1.6
J146.9436 Lumber Graders and Other Wood Processing Inspectors and Graders	330	0.4	0.8	4.9	0.6
J15.944 Machine Operators and Related Workers in Textile Processing	20	1.5	1.1	4.1	1.3
J151.9441 Textile Fibre and Yarn Preparation Machine Operators	-	-	-	-	-
J152.9442 Weavers, Knitters and Other Fabric-Making Occupations	-	-	-	-	-
J153.9443 Textile Dyeing and Finishing Machine Operators	-	-	-	-	-
J154.9444 Textile Inspectors, Graders and Samplers	-	-	-	-	-
J16.945 Machine Operators and Related Workers in Fabric, Fur and Leather Products Manufacturing	119	1.3	1.7	5.6	1.5
J161.9451 Sewing Machine Operators	104	1.3	1.7	5.6	1.5
J162.9452 Fabric, Fur and Leather Cutters	-	-	-	-	-
J163.9453 Hide and Pelt Processing Workers	-	-	-	-	-

Thompson Rivers College Region

Projected Annual Growth Rates in Occupational Demand

	Estimated Employment	Average Annual % Change			Avg Annual % Chg Over 4 Years
	<u>2005</u>	<u>2007/2005</u>	<u>2009/2007</u>	<u>2010/2009</u>	<u>2009/2005</u>
J164.9454 Inspectors and Testers, Fabric, Fur and Leather Products Manufacturing	-	-	-	-	-
J17.946 Machine Operators and Related Workers in Food, Beverage and Tobacco Processing	84	2.9	1.4	2.3	2.2
J171.9461 Process Control and Machine Operators, Food and Beverage Processing	46	3.0	1.4	2.3	2.2
J172.9462 Industrial Butchers and Meat Cutters, Poultry Preparers and Related Workers	23	3.3	1.5	1.6	2.4
J173.9463 Fish Plant Workers	-	-	-	-	-
J174.9464 Tobacco Processing Machine Operators	0	-	-	-	-
J175.9465 Testers and Graders, Food and Beverage Processing	13	1.8	1.4	3.6	1.6
J18.947 Printing Machine Operators and Related Occupations	141	1.2	1.3	4.8	1.3
J181.9471 Printing Machine Operators	33	1.4	1.6	4.9	1.5
J182.9472 Camera, Platemaking and Other Pre-Press Occupations	13	1.4	1.6	4.5	1.5
J183.9473 Binding and Finishing Machine Operators	20	1.5	1.8	4.8	1.7
J184.9474 Photographic and Film Processors	75	1.0	0.9	5.0	1.0
J19.951 Machining, Metalworking, Woodworking and Related Machine Operators	140	0.9	1.4	4.8	1.2
J191.9511 Machining Tool Operators	17	1.3	1.8	4.4	1.6
J192.9512 Forging Machine Operators	-	-	-	-	-
J193.9513 Woodworking Machine Operators	89	0.6	1.2	4.8	0.9
J194.9514 Metalworking Machine Operators	15	1.2	1.9	4.9	1.6
J196.9516 Other Metal Products Machine Operators.	-	-	-	-	-
J197.9517 Other Products Machine Operators	-	-	-	-	-
J2 Assemblers in manufacturing	513	1.3	1.9	4.3	1.6
J21.948 Mechanical, Electrical and Electronics Assemblers	138	1.4	1.9	4.8	1.7
J211.9481 Aircraft Assemblers and Aircraft Assembly Inspectors	-	-	-	-	-
J212.9482 Motor Vehicle Assemblers, Inspectors and Testers	22	1.5	1.4	4.8	1.5
J213.9483 Electronics Assemblers, Fabricators, Inspectors and Testers	39	1.3	1.9	5.5	1.6

Thompson Rivers College Region

Projected Annual Growth Rates in Occupational Demand

	Estimated Employment	Average Annual % Change			Avg Annual % Chg Over 4 Years
	<u>2005</u>	<u>2007/2005</u>	<u>2009/2007</u>	<u>2010/2009</u>	<u>2009/2005</u>
J214.9484 Assemblers and Inspectors, Electrical Appliance, Apparatus and Equipment Manufacturing	16	1.4	1.7	5.6	1.6
J215.9485 Assemblers, Fabricators and Inspectors, Industrial Electrical Motors and Transformers	12	1.5	2.5	3.5	2.0
J216.9486 Mechanical Assemblers and Inspectors	33	1.5	1.8	4.0	1.7
J217.9487 Machine Operators and Inspectors, Electrical Apparatus Manufacturing	-	-	-	-	-
J22.949 Other Assembly and Related Occupations	375	1.3	1.9	4.1	1.6
J221.9491 Boat Assemblers and Inspectors	36	1.4	2.0	5.5	1.7
J222.9492 Furniture and Fixture Assemblers and Inspectors	91	1.3	1.9	4.6	1.6
J223.9493 Other Wood Products Assemblers and Inspectors	130	1.0	1.4	4.1	1.2
J224.9494 Furniture Finishers and Refinishers	24	1.1	1.8	4.3	1.5
J225.9495 Plastic Products Assemblers, Finishers and Inspectors	-	-	-	-	-
J226.9496 Painters and Coaters - Industrial	58	1.6	3.2	1.4	2.4
J227.9497 Plating, Metal Spraying and Related Operators	-	-	-	-	-
J228.9498 Other Assemblers and Inspectors	24	1.3	1.8	5.2	1.6
J3 Labourers in processing, manufacturing and utilities	1,672	0.9	1.0	4.4	1.0
J31.961 Labourers in Processing, Manufacturing and Utilities	1,674	0.9	1.0	4.4	1.0
J311.9611 Labourers in Mineral and Metal Processing	32	1.4	1.9	2.7	1.7
J312.9612 Labourers in Metal Fabrication	36	1.5	2.5	3.8	2.0
J313.9613 Labourers in Chemical Products Processing and Utilities	11	13.9	1.3	0.3	7.8
J314.9614 Labourers in Wood Pulp and Paper Processing	1,308	0.6	0.9	4.7	0.7
J315.9615 Labourers in Rubber and Plastic Products Manufacturing	-	-	-	-	-
J316.9616 Labourers in Textile Processing	-	-	-	-	-
J317.9617 Labourers in Food Beverage and Tobacco Processing	149	2.4	1.3	3.0	1.9
J318.9618 Labourers in Fish Processing	-	-	-	-	-
J319.9619 Other Labourers in Processing, Manufacturing and Utilities	121	1.3	1.7	4.7	1.5

- suppressed due to small numbers