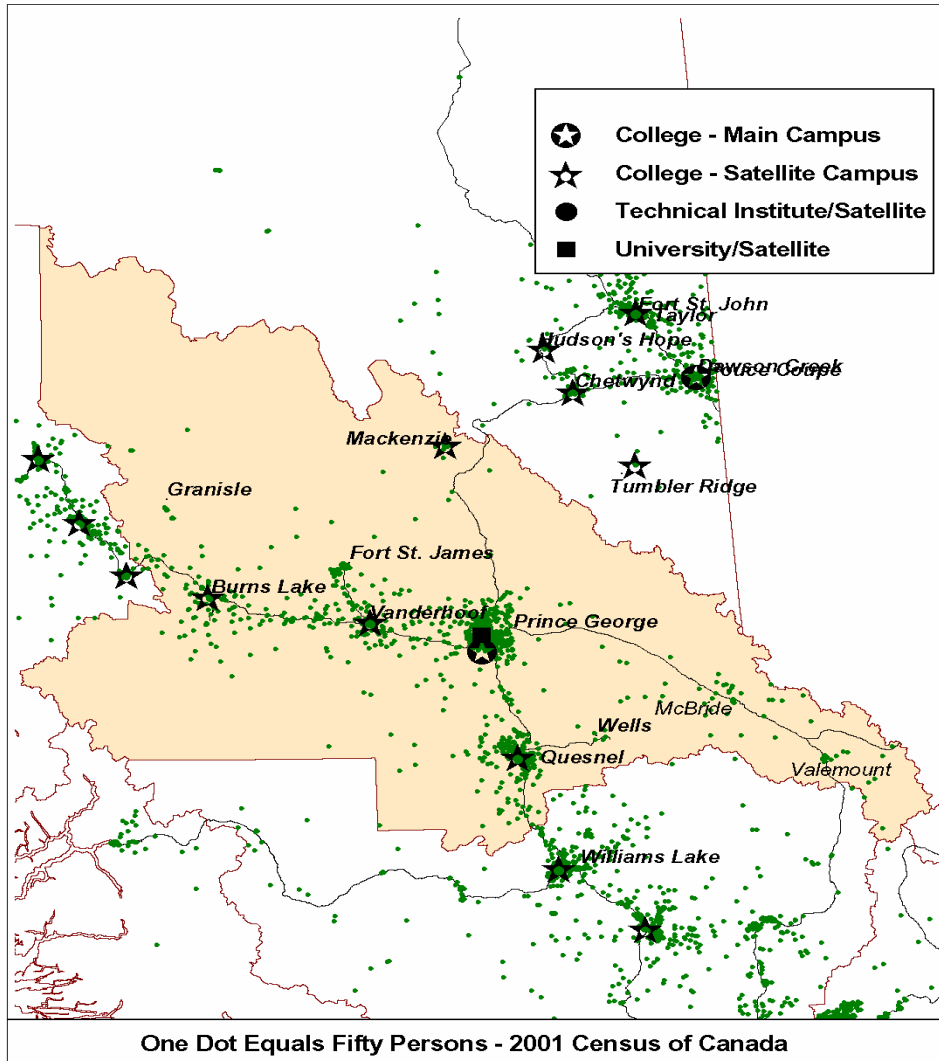


INDUSTRY AND OCCUPATION PROJECTIONS: 2006 -- 2010

NEW CALEDONIA COLLEGE REGION



Background Information on Geographic Location of Population

Major Cities	Population <u>2005</u>	% of <u>Region</u>	Land <u>Area</u> <i>Sq Km</i>	Population <u>Density</u> <i>Persons per Sq Km</i>
Prince George	77,148	50.0	316.0	244.1
Quesnel	10,487	6.8	35.3	296.7
Mackenzie	5,454	3.5	219.4	24.9
Vanderhoof	4,727	3.1	54.9	86.2
Burns Lake	2,005	1.3	7.1	282.0
Fort St. James	2,003	1.3	22.1	90.6
Fraser Lake	1,367	0.9	3.9	350.5
Valemount	1,250	0.8	3.9	318.9
McBride	752	0.5	4.4	169.8
Granisle	353	0.2	40.2	8.8
Wells	248	0.2	159.2	1.6
Rest of Region	48,529	31.4	152,537.6	0.3
Total Region	154,323	100.0	153,404.0	1.0
Region as % of BC	3.6		16.6	
Youth Age 15-29	35,123			
Youth in Region as % of BC	4.1			

Note to Users

All assumptions relating to employment are based on past conditions, modified wherever possible to take into consideration future changes. Consequently, the resulting employment projections are not necessarily what will be, but rather what could be, given the realization of these conditions. It is certainly possible that unforeseen changes in factors such as economic development, government policy, land use and zoning will affect future employment. Consequently, the projections should only be regarded as one possible scenario on the future size and distribution of the workforce.

Regional Employment Projection Model (REPM)

BC STATS is grateful for the support and financial assistance from the Ministry of Advanced Education in developing the model.

Contents

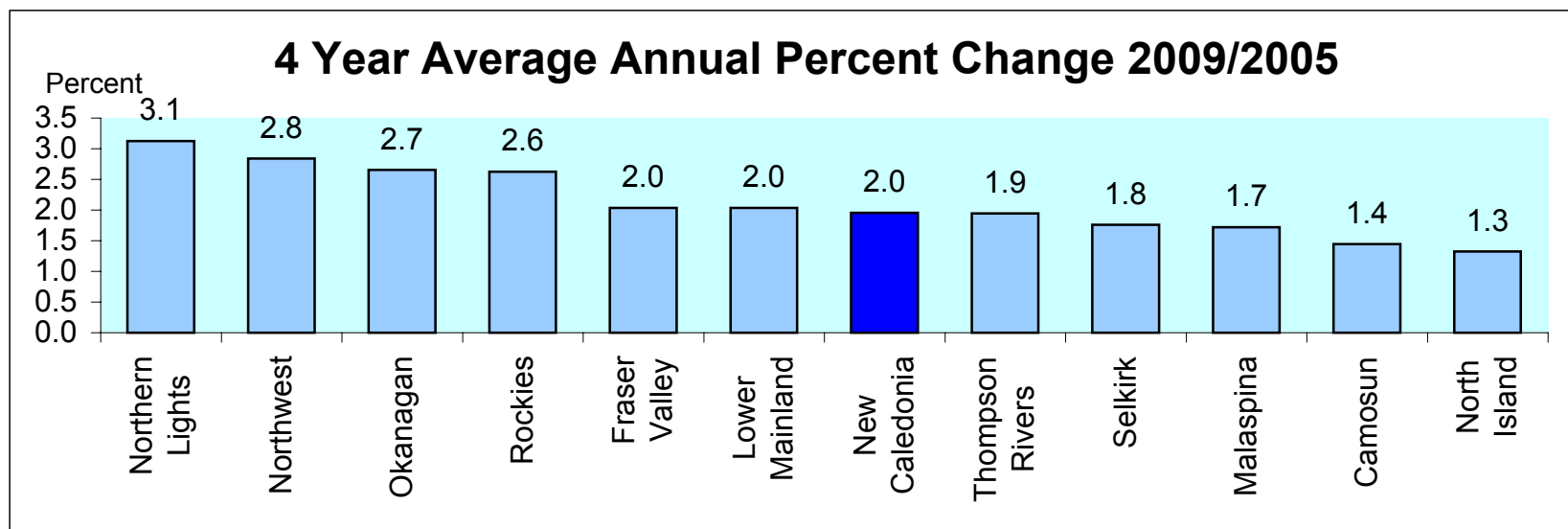
1. Projected Annual Growth in Employment Demand by College Region
2. Industrial Structure in the College Region Compared with BC, 2005 and 2009
3. Projected Annual Growth in Employment Demand by Industry
4. Occupational Structure in the College Region Compared with BC, 2005 and 2009
5. Projected Annual Growth Rates in Occupational Demand (1-digit)
6. Projected Annual Growth Rates in Occupational Demand (2-digits)

Appendices

1. Methodology
2. COPS Industry Conversion to REPM
3. Regional District to College Region Conversion for REPM
4. Projected Annual Growth Rates in Occupational Demand (3-digit)
5. Projected Annual Growth Rates in Occupational Demand (4-digit)

Projected Annual Growth in Employment Demand by College Region

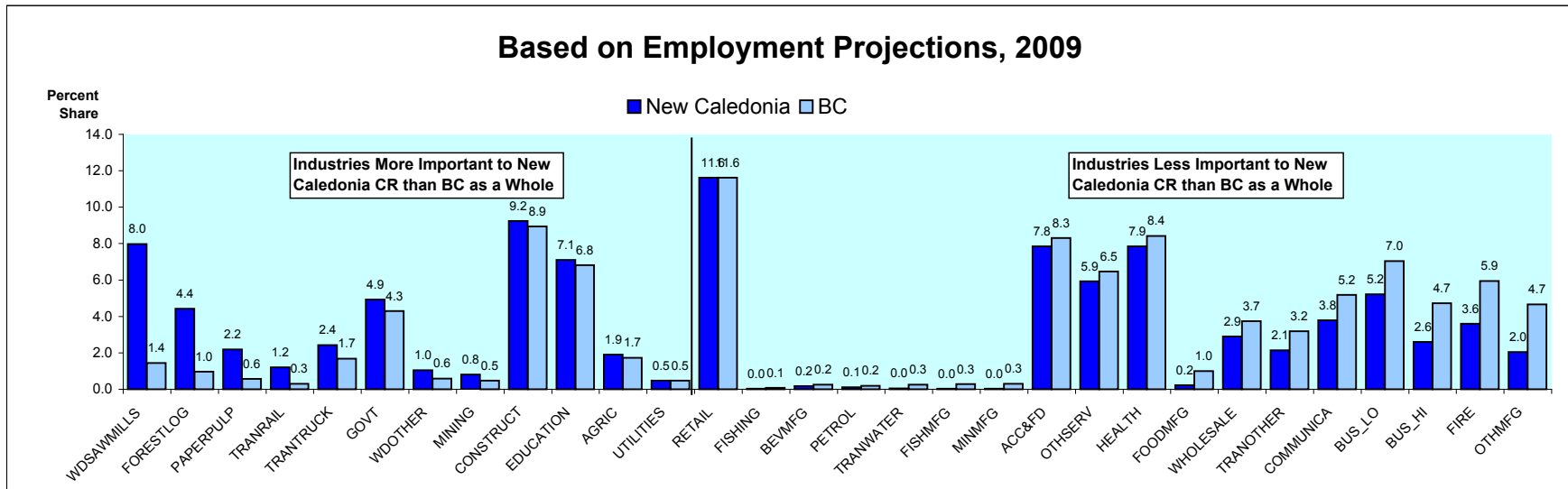
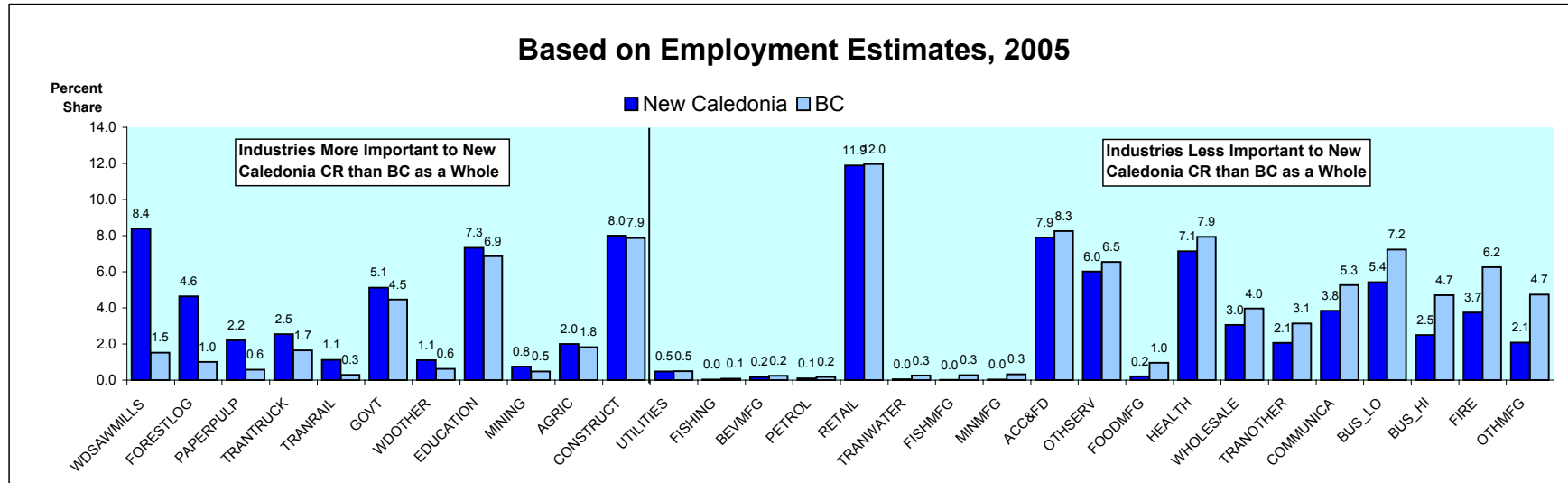
	Estimated Employment	Projected Employment Levels		Average Annual % Chg			Avg Annual % Chg Over 4 Years
	<u>2005</u>	<u>2009</u>	<u>2010</u>	<u>2007/2005</u>	<u>2009/2007</u>	<u>2010/2009</u>	<u>2009/2005</u>
Northern Lights	34,708	39,046	39,220	3.1	2.9	0.4	3.1
Northwest	34,597	38,531	39,845	2.3	3.2	3.4	2.8
Okanagan	175,281	193,888	201,600	2.3	2.9	4.0	2.7
Rockies	37,929	41,910	43,335	2.3	2.8	3.4	2.6
Fraser Valley	120,271	130,067	133,725	1.8	2.2	2.8	2.0
Lower Mainland	1,182,258	1,278,495	1,327,306	2.1	1.9	3.8	2.0
New Caledonia	75,311	81,207	83,482	1.8	2.0	2.8	2.0
Thompson Rivers	85,651	92,310	94,914	1.8	2.0	2.8	1.9
Selkirk	36,829	39,421	40,304	1.5	2.0	2.2	1.8
Malaspina	109,580	117,129	120,067	1.4	2.0	2.5	1.7
Camosun	167,460	177,149	181,894	1.3	1.6	2.7	1.4
North Island	70,227	73,956	75,509	1.2	1.4	2.1	1.3
Total	2,130,101	2,303,108	2,381,200	2.0	2.0	3.4	2.0



Industrial Structure in the New Caledonia College Region Compared with BC

Percent Share of Employment by Industry

Ranked by the Percentage Point Difference in the Industry Share in the College Region Compared with BC



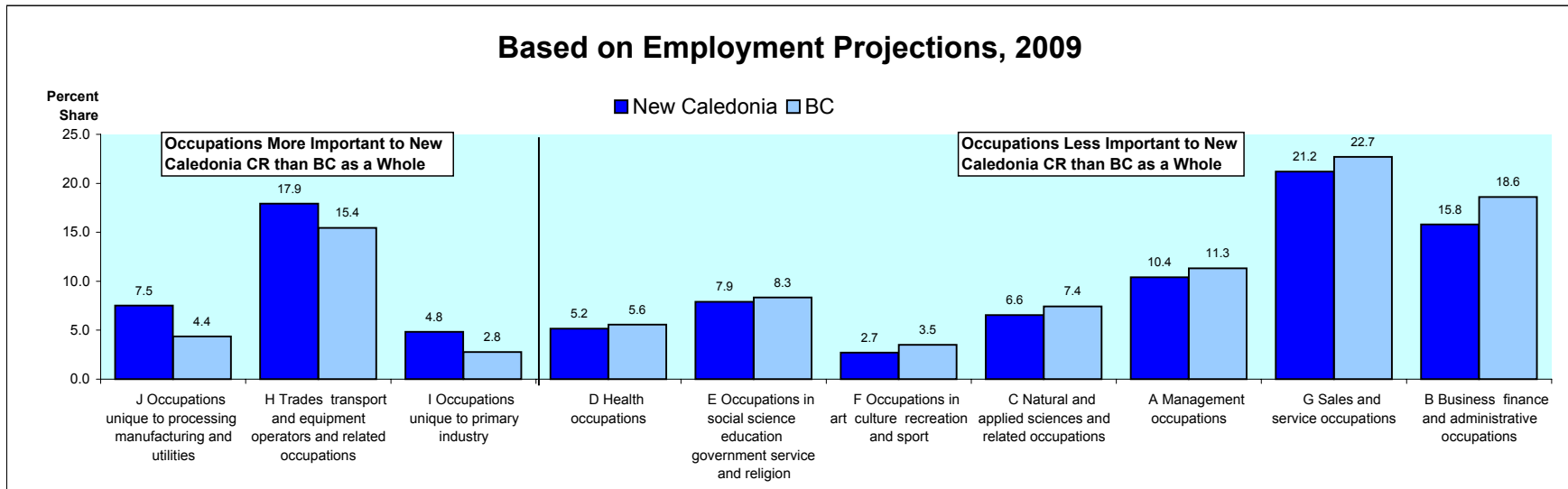
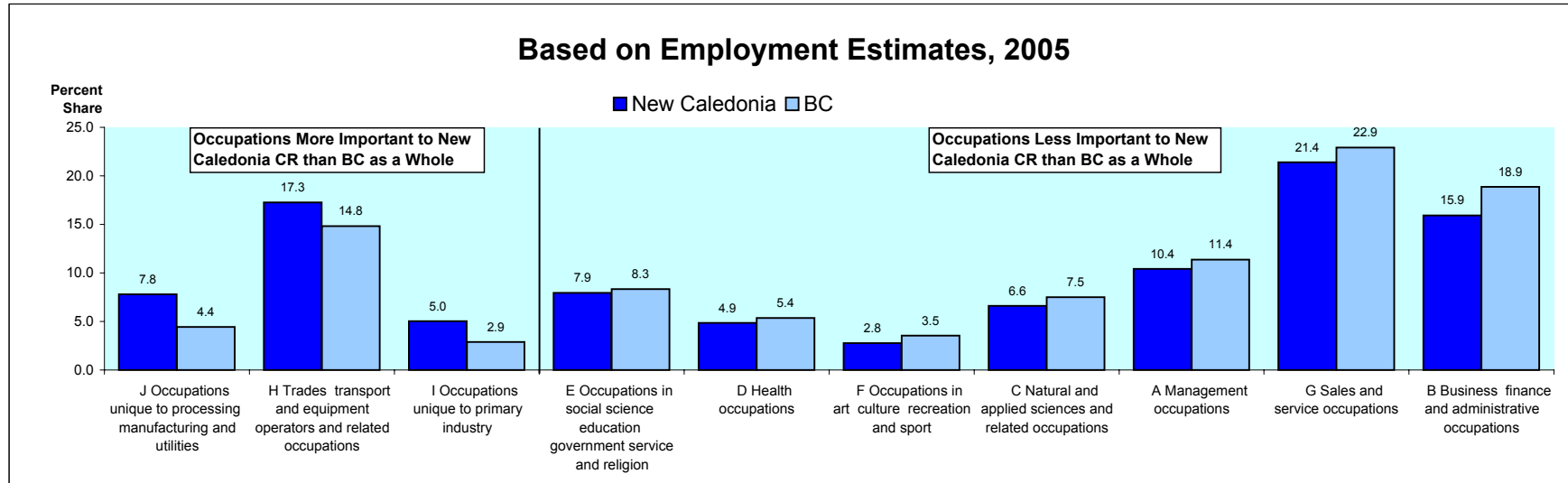
New Caledonia College Region

	Estimated	Projected		Average Annual % Chg			Avg Annual % Chg
	Employment	Employment Levels					Over 4 Years
	<u>2005</u>	<u>2009</u>	<u>2010</u>	<u>2007/2005</u>	<u>2009/2007</u>	<u>2010/2009</u>	<u>2009/2005</u>
ACC&FD	5,948	6,375	6,678	1.5	2.0	4.8	1.8
AGRIC	1,506	1,544	1,611	0.9	0.4	4.4	0.6
BEVMFG	127	142	143	4.0	1.7	1.0	2.9
BUS_HI	1,880	2,110	2,208	2.5	3.5	4.6	3.1
BUS_LO	4,084	4,234	4,335	1.2	0.7	2.4	0.9
COMMUNICA	2,895	3,078	3,111	1.7	1.4	1.1	1.6
CONSTRUCT	6,023	7,510	7,095	3.4	8.3	-5.5	6.2
EDUCATION	5,523	5,764	5,773	1.3	0.9	0.2	1.1
FIRE	2,819	2,919	3,057	1.4	0.3	4.7	0.9
FISHING	20	21	22	1.6	1.4	7.1	1.5
FISHMFG	18	20	20	4.0	1.7	1.0	2.9
FOODMFG	160	178	179	3.9	1.7	0.9	2.9
FORESTLOG	3,495	3,594	3,563	1.8	-0.4	-0.9	0.7
GOVT	3,852	4,010	4,045	1.0	1.0	0.9	1.0
HEALTH	5,377	6,376	6,704	4.4	4.5	5.1	4.6
MINING	567	657	691	3.9	3.7	5.2	4.0
MINMFG	29	29	29	0.5	0.1	0.2	0.3
OTHMFG	1,566	1,658	1,782	1.1	1.8	7.5	1.5
OTHSERV	4,528	4,811	5,070	1.6	1.5	5.4	1.6
PAPERPULP	1,663	1,780	1,790	2.2	1.2	0.5	1.8
PETROL	69	84	79	6.1	3.9	-6.3	5.2
PETROLMFG	-	-	-	-	-	-	-
RETAIL	8,951	9,431	9,993	1.8	0.9	6.0	1.3
TRANOTHER	1,551	1,734	1,782	3.0	2.7	2.8	2.9
TRANRAIL	845	973	1,001	4.5	2.8	2.8	3.8
TRANTRUCK	1,920	1,971	2,019	0.0	1.3	2.4	0.7
TRANWATER	32	38	40	5.3	2.9	4.7	4.3
UTILITIES	367	388	398	1.7	1.2	2.5	1.4
WDOTHER	827	847	891	0.4	0.8	5.2	0.6
WDSAWMILLS	6,318	6,471	6,809	0.4	0.8	5.2	0.6
WHOLESALE	2,297	2,353	2,459	0.6	0.7	4.5	0.6
ALL INDUSTRIES	75,311	81,207	83,482	1.8	2.0	2.8	2.0

Occupational Structure in the New Caledonia College Region Compared with BC

Percent Share of Employment by Occupation

Ranked by the Percentage Point Difference in the Occupation Share in the College Region Compared with BC



New Caledonia College Region

Projected Annual Growth Rates in Occupational Demand

	Estimated Employment	Average Annual % Change			Avg Annual % Chg Over 4 Years
	<u>2005</u>	<u>2007/2005</u>	<u>2009/2007</u>	<u>2010/2009</u>	<u>2009/2005</u>
All occupations	75,311	1.8	2.0	2.8	2.0
A Management occupations	7,839	1.8	2.0	2.9	1.9
B Business finance and administrative occupations	11,996	1.8	1.7	2.9	1.7
C Natural and applied sciences and related occupations	4,978	1.8	1.6	2.2	1.7
D Health occupations	3,665	3.5	3.5	5.1	3.6
E Occupations in social science education government service and religion	5,978	1.9	1.6	2.0	1.8
F Occupations in art culture recreation and sport	2,079	1.6	1.4	2.0	1.5
G Sales and service occupations	16,123	1.7	1.6	4.5	1.7
H Trades transport and equipment operators and related occupations	13,004	2.1	3.7	0.3	3.0
I Occupations unique to primary industry	3,783	1.4	0.4	1.9	0.9
J Occupations unique to processing manufacturing and utilities	5,865	1.0	1.1	4.3	1.1

Projected Annual Growth Rates in Occupational Demand (2-digits)

New Caledonia College Region

Projected Annual Growth Rates in Occupational Demand

	Estimated Employment	Average Annual % Change			Avg Annual % Chg Over 4 Years
	<u>2005</u>	<u>2007/2005</u>	<u>2009/2007</u>	<u>2010/2009</u>	<u>2009/2005</u>
All occupations	75,311	1.8	2.0	2.8	2.0
A2 Managers in retail trade food and accommodation services	908	1.7	1.9	2.5	1.8
A3 Other managers n.e.c.	1,623	1.6	1.5	3.1	1.6
B0 Professional occupations in business and finance	2,723	1.7	1.4	5.2	1.6
B1 Finance and insurance administration occupations	2,584	2.1	3.0	0.6	2.6
B2 Secretaries	1,901	1.6	1.3	3.3	1.5
B3 Administrative and regulatory occupations	1,157	1.7	1.7	2.7	1.7
B4 Clerical supervisors	1,558	1.9	2.2	2.3	2.1
B5 Clerical occupations	1,287	1.8	2.0	2.4	1.9
C0 Professional occupations in natural and applied sciences	250	1.6	1.3	3.3	1.5
C1 Technical occupations related to natural and applied sciences	5,844	1.8	1.6	3.2	1.7
D0 Professional occupations in health	2,678	1.8	1.5	2.5	1.7
D1 Nurse supervisors and registered nurses	2,301	1.9	1.7	1.8	1.8
D2 Technical and related occupations in health	849	3.4	3.4	5.1	3.5
D3 Assisting occupations in support of health services	954	3.8	3.9	5.1	3.9
E0 Judges, lawyers, psychologists, social workers, ministers of religion & policy/program officers	941	3.2	3.3	4.8	3.4
E1 Teachers and professors	919	3.6	3.6	5.2	3.7
E2 Paralegals, social services workers & occup. in educ. & religion n.e.c.	1,531	2.0	2.0	3.3	2.0
F0 Professional occupations in art and culture	2,948	1.3	0.9	0.3	1.1
F1 Technical occupations in art, culture, recreation and sport	1,502	2.8	2.8	3.8	2.8
G0 Sales and service supervisors	883	1.6	1.3	1.5	1.5
G1 Wholesale, technical, insurance, real estate sales specialists & retail, wholesale and grain buyers	1,195	1.6	1.5	2.3	1.6
G2 Retail salespersons and sales clerks	471	1.8	1.6	4.8	1.7
G3 Cashiers	1,160	1.3	1.0	4.0	1.2
G4 Chefs and cooks	2,898	1.7	1.0	5.5	1.4
G5 Occupations in food and beverage service	1,290	1.7	1.1	5.5	1.4

New Caledonia College Region

Projected Annual Growth Rates in Occupational Demand

	Estimated Employment	Average Annual % Change			Avg Annual % Chg Over 4 Years
	<u>2005</u>	<u>2007/2005</u>	<u>2009/2007</u>	<u>2010/2009</u>	<u>2009/2005</u>
G6 Occupations in protective services	1,177	1.7	2.1	4.6	1.9
G7 Occup. in travel & accommodation incl. attendants in recreation & sport	1,482	1.5	2.0	4.7	1.8
G8 Childcare and home support workers	828	1.2	1.1	1.5	1.2
G9 Sales and service occupations n.e.c.	570	2.1	2.1	3.0	2.1
H0 Contractors and supervisors in trades and transportation	1,399	2.4	2.3	3.5	2.4
H1 Construction trades	4,853	1.8	1.7	4.7	1.8
H2 Stationary engineers, power stn operators & electrical trades & telecom.	682	2.9	5.3	-1.7	4.3
H3 Machinists, metal forming, shaping and erecting occupations	2,531	3.1	7.1	-4.1	5.3
H4 Mechanics	987	2.3	4.0	-0.7	3.3
H5 Other trades n.e.c.	667	2.1	3.4	1.6	2.8
H6 Heavy equipment and crane operators including drillers	2,132	1.7	1.7	3.4	1.8
H7 Transport equipment operators & related workers, excl. labourers	650	1.6	2.4	2.9	2.1
H8 Trades helpers, construction and transport labourers & related	732	2.5	4.4	-1.3	3.6
I0 Occupations unique to agriculture, excluding labourers	2,872	1.6	1.8	2.3	1.7
I1 Occup. unique to forestry ops, mining, oil & gas extraction, fishing excl. labourers	1,749	1.9	3.4	0.7	2.7
I2 Primary production labourers	1,381	1.0	0.5	3.9	0.7
J0 Supervisors in manufacturing	1,428	1.8	0.2	0.5	1.0
J1 Machine operators in manufacturing	976	1.6	0.5	1.1	1.0
J2 Assemblers in manufacturing	507	1.3	1.1	4.0	1.3
J3 Labourers in processing, manufacturing and utilities	2,584	1.1	1.1	4.2	1.1

Appendix 1

Summary of Methodology for the British Columbia Regional Employment Projection Model (REPM)

The methodology used in the model has come largely from previous work on community dependencies carried out earlier by BC STATS. The fundamental premise is that the economy of a region can be represented by income flows that can be classified as “basic” (or driver) and “non-basic” (or support) depending on the source of the income.

The model calculates indirect employment effects from employment changes in the basic sectors using multipliers based in inter-industry linkages from the British Columbia Input-Output Model. Similarly, non-basic, or induced effects are calculated using an income-to-non-basic-jobs ratio.

The current version of the model is benchmarked to the 2001 Census employment by Regional District, and is projected forward up to the most up-to-date annual employment data from the Labour Force Survey. The growth rates from the Labour Force Survey (LFS) at the provincial level for the basic industries are used to project growth down to the Regional District level. The model then calculates the indirect jobs based on the Regional District specific multipliers. The direct and indirect employment levels are then used to calculate the wages and salaries earned in the basic industries which in turn are converted to employment in the non-basic industries through the income to support-industry job multipliers. As well, transfer payments and investment income are also converted to employment in the non-basic industries using the same multipliers. The output from the model is then benchmarked to the LFS industry numbers at the BC level as well as to the LFS regional employment numbers for the Development Regions and the Capital and Greater Vancouver Regional Districts. In the current version of the model, the employment numbers are reconciled up to the 2005 annual averages from the LFS.

Once the model is brought up to the most current employment levels, then the forecast is carried out for five to ten years further. The industrial employment projections from the Canadian Occupational Projection System (COPS) are now used as the source data for the industrial growth, both in determining the growth rates in the direct employment and then as a benchmark on which to reconcile the industrial employment generated by the model.

While the total employment is forced to the COPS employment levels, there is leeway to adjust growth rates by industry across the sub-provincial regions. There are some standard variables that are used to differentiate the outlook for

the regions. For example, the growth in the education sector is dictated by the projected K-12 and post-secondary population growth in the relevant age groups. Government Services is projected in line with the total population projections for the Regional Districts. Employment in the Health Sector is so often governed by the growth in the senior's population as are the transfer payments flowing in. (CPP and OAS is a large component of transfer payments). As well, pensions from private pension plans are considered investment income meaning seniors receive a high proportion of the total investment income in a region.

An important determining factor of growth by region is the major projects coming on stream in the outlook timeframe. Firstly they impact construction employment and secondly many will impact specific industries once they move into the production phase. In BC, we are dealing with the preparations for the 2010 Winter Games so many of the construction occupations will be in short supply.

The intent is to update the REPM annually, based on another year of LFS data plus a new COPS forecast. Currently, there is a demand for economic forecasts by occupation at the college region level. College Regions are aggregations of sub-sets of Regional Districts. Occupational forecasts are being produced at the college region level. In the appendix there is a conversion table which outlines which Regional District belongs to which College Region.

The model is only as good as the input data assumptions. Our reliance on good quality data from COPS is very important. Users of the data who perceive any problems with the assumptions in the model or question the quality of any of the data series being used should contact BC STATS at bcstats@gov.bc.ca.

May 2, 2006

Appendix 2

COPS INDUSTRY CONVERSION TO REPM

REPM INDUSTRY	COPS INDUSTRY	% of COPS INDUSTRY
ACC&FD	31 Accommodation and food services	100
AGRIC	1 Agriculture	100
BEVMFG	9 Food and Beverage Products	16
BUS_HI	25 Computer System Design Services	100
BUS_HI	24 Professional Business Services	50
BUS_HI	26 Other Professional Services	50
BUS_LO	27 Management, Administrative and Other Support	100
BUS_LO	24 Professional Business Services	50
BUS_LO	26 Other Professional Services	50
COMMUNICA	30 Information, culture and recreation	100
CONSTRUCT	8 Construction	100
EDUCATION	28 Educational Services	100
FIRE	23 Finance, Insurance, Real Estate and Leasing	100
FISHING	3 Fishing, Hunting and Trapping	100
FISHMFG	9 Food and Beverage Products	18
FOODMFG	9 Food and Beverage Products	66
FORESTLOG	2 Forestry and Logging with support activities	100
GOVT	33 Public administration	100
HEALTH	29 Health Care and Social Assistance	75
MINING	5 Mining (except Oil and Gas)	100
MINING	6 Support Activities for Mining and Oil and Gas Extraction	67
MINMFG	14 Manufactured Mineral Products	50
OTHMFG	12 Printing and Related Support Activities	100
OTHMFG	13 Rubber, Plastics and Chemicals	100
OTHMFG	14 Manufactured Mineral Products	50
OTHMFG	15 Metal Fabrication and Machinery (excluding electrical)	100
OTHMFG	16 Computer, Electronic and Electrical Products	100
OTHMFG	17 Motor Vehicle, Body, Trailer & Parts Manufacturing	100
OTHMFG	18 Other Transportation Equipment Manufacturing	100
OTHSERV	29 Health Care and Social Assistance	25
OTHSERV	32 Other services	100

COPS INDUSTRY CONVERSION TO REPM

REPM INDUSTRY	COPS INDUSTRY	% of COPS INDUSTRY
PAPERPULP	11 Paper Manufacturing	100
PETROL	4 Oil and Gas Extraction	100
PETROL	6 Support Activities for Mining and Oil and Gas Extraction	33
PETROLMFG	19 Other Manufacturing	7
RETAIL	21 Retail Trade	100
TRANOTHER	22 Transportation and Warehousing	59
TRANRAIL	22 Transportation and Warehousing	5
TRANTRUCK	22 Transportation and Warehousing	31
TRANWATER	22 Transportation and Warehousing	5
UTILITIES	7 Utilities	100
WDOTHER	10 Wood Product Manufacturing	29
WDSAWMILLS	10 Wood Product Manufacturing	71
WHOLESALE	20 Wholesale Trade	100

Appendix 3

REGIONAL DISTRICT TO COLLEGE REGION CONVERSION FOR REPM

COLLEGE REGION	REGIONAL DISTRICT #	REGIONAL DISTRICT NAME	% of REGIONAL DISTRICT
CAMOSUN	17	Capital	100
FRASER VALLEY	9	Fraser Valley	100
LOWER MAINLAND	15	Greater Vancouver	100
LOWER MAINLAND	29	Sunshine Coast	100
LOWER MAINLAND	31	Squamish Lillooet	87
MALASPINA	19	Cowichan Valley	100
MALASPINA	21	Nanaimo	100
MALASPINA	27	Powell River	100
NEW CALEDONIA	41	Cariboo	37
NEW CALEDONIA	51	Bulkley Nechako	61
NEW CALEDONIA	53	Fraser-Fort George	100
NORTH ISLAND	23	Alberni-Clayoquot	100
NORTH ISLAND	25	Comox Strathcona	100
NORTH ISLAND	43	Mount Waddington	100
NORTH ISLAND	45	Central Coast	100
NORTHERN LIGHTS	49	Kitimat Stikine	2
NORTHERN LIGHTS	55	Peace River	100
NORTHERN LIGHTS	57	Stikine	100
NORTHERN LIGHTS	59	Northern Rockies	100
NORTHWEST	47	Skeena-Queen Charlotte	100
NORTHWEST	49	Kitimat Stikine	98
NORTHWEST	51	Bulkley Nechako	39
OKANAGAN	7	Okanagan-Similkameen	100
OKANAGAN	35	Central Okanagan	100
OKANAGAN	37	North Okanagan	100
OKANAGAN	39	Columbia Shushwap	85
ROCKIES	1	East Kootenay	100
ROCKIES	3	Central Kootenays	20
ROCKIES	39	Columbia Shushwap	15
SELKIRK	3	Central Kootenays	80
SELKIRK	5	Kootenay Boundary	100
THOMPSON RIVERS	31	Squamish Lillooet	13
THOMPSON RIVERS	33	Thompson Nicola	100
THOMPSON RIVERS	41	Cariboo	63

Appendix 4

Projected Annual Growth Rates in Occupational Demand (3-digit)

New Caledonia College Region

Projected Annual Growth Rates in Occupational Demand

	Estimated Employment	Average Annual % Change			Avg Annual % Chg Over 4 Years
	<u>2005</u>	<u>2007/2005</u>	<u>2009/2007</u>	<u>2010/2009</u>	<u>2009/2005</u>
All occupations	75,311	1.8	2.0	2.8	2.0
A01.001 Legislators and Senior Management	907	1.7	1.9	2.5	1.8
A11.011 Administrative Services Managers	561	1.7	1.5	3.0	1.7
A12.021 Managers in Engineering, Architecture, Science & Information Systems	257	1.6	1.7	2.7	1.7
A13.061 Sales, Marketing and Advertising Managers	562	1.4	1.4	3.5	1.4
A14.072 Facility Operation and Maintenance Managers	241	1.7	1.6	2.9	1.7
A21.062 Managers in Retail Trade	1,792	1.7	1.1	5.5	1.4
A22.063 Managers in Food Service and Accommodation	934	1.5	2.0	4.7	1.8
A30.012 Managers in Financial and Business Services	416	1.5	0.7	4.2	1.1
A31.013 Managers in Communication (Except Broadcasting)	51	1.9	1.7	1.5	1.8
A32.031 Managers in Health, Education, Social and Community Services	389	2.1	1.9	2.0	2.0
A33.041 Managers in Public Administration	61	1.3	1.2	1.6	1.3
A34.051 Managers in Art, Culture, Recreation and Sport	89	1.7	1.5	1.7	1.6
A35.064 Managers in Protective Service	79	1.0	1.0	0.9	1.0
A36.065 Managers in Other Services	103	1.7	1.7	3.6	1.7
A37.071 Managers in Construction and Transportation	834	2.9	6.6	-3.5	4.9
A38.081 Managers in Primary Production (Except Agriculture)	222	1.7	0.5	1.1	1.1
A39.091 Managers in Manufacturing and Utilities	346	1.5	1.3	4.3	1.5
B01.111 Auditors, Accountants and Investment Professionals	1,538	1.6	1.2	3.4	1.4
B02.112 Human Resources and Business Service Professionals	362	1.6	1.5	3.0	1.6
B11.123 Finance and Insurance Administrative Occupations	1,155	1.7	1.7	2.7	1.7
B21.124 Secretaries, Records and Transcriptionists	1,555	1.9	2.2	2.3	2.1
B31.122 Administrative and Regulatory Occupations	1,286	1.7	2.0	2.4	1.9
B41.121 Clerical Supervisors	251	1.6	1.3	3.3	1.5
B51.141 Clerical Occupations, General Office Skills	1,972	2.0	2.0	2.9	2.0
B52.142 Office Equipment Operators	232	1.6	1.4	2.7	1.5
B53.143 Finance and Insurance Clerks	1,430	1.6	1.1	3.6	1.4
B54.144 Administrative Support Clerks	397	1.8	1.8	2.7	1.8
B55.145 Library Correspondence and Related Information Clerks	726	1.6	1.2	2.8	1.4

New Caledonia College Region

Projected Annual Growth Rates in Occupational Demand

	Estimated Employment	Average Annual % Change			Avg Annual % Chg Over 4 Years
	<u>2005</u>	<u>2007/2005</u>	<u>2009/2007</u>	<u>2010/2009</u>	<u>2009/2005</u>
B56.146 Mail and Message Distribution Occupations	323	2.4	2.1	3.1	2.3
B57.147 Recording, Scheduling and Distributing Occupations	764	1.7	1.4	3.8	1.6
C01.211 Physical Science Professionals	123	2.4	2.0	2.9	2.3
C02.212 Life Science Professionals	436	1.4	0.6	1.6	1.0
C03.213 Civil, Mechanical, Electrical and Chemical Engineers	497	2.0	2.1	2.0	2.1
C04.214 Other Engineers	226	2.3	1.8	2.9	2.1
C05.215 Architects, Urban Planners and Land Surveyors	207	1.7	2.2	1.8	2.0
C06.216 Mathematicians, Statisticians and Actuaries	16	1.8	1.8	2.6	1.8
C07.217 Computer and Information Systems Professionals	1,177	1.6	1.5	2.9	1.6
C11.221 Technical Occupations in Physical Sciences	89	2.2	2.0	2.7	2.2
C12.222 Technical Occupations in Life Sciences	560	1.4	0.4	1.0	0.9
C13.223 Technical Occupations in Civil, Mechanical & Industrial Engineering	213	2.3	4.3	-0.8	3.4
C14.224 Technical Occupations in Electronics and Electrical Engineering	390	1.9	1.9	2.7	1.9
C15.225 Technical Occupations in Architecture, Drafting, Surveying & Mapping	302	1.7	1.8	2.4	1.8
C16.226 Other Technical Inspectors and Regulatory Officers	144	1.9	2.3	1.5	2.1
C17.227 Transportation Officers and Controllers	185	2.7	2.1	2.4	2.5
C18.228 Technical Occupations in Computer and Information Systems	414	1.8	1.3	2.9	1.6
D01.311 Physicians Dentists and Veterinarians	431	3.6	3.7	5.0	3.8
D02.312 Optometrists, Chiropractors & Other Health Diagnosing/Treating Profs.	56	3.7	3.8	5.2	3.9
D03.313 Pharmacists, Dietitians and Nutritionists	164	2.4	1.9	5.6	2.2
D04.314 Therapy and Assessment Professionals	198	3.6	3.7	4.9	3.8
D11.315 Nurse Supervisors and Registered Nurses	954	3.8	3.9	5.1	3.9
D21.321 Medical Technologists and Technicians (Except Dental Health)	354	3.3	3.4	4.8	3.5
D22.322 Technical Occupations in Dental Health Care	100	3.3	3.5	5.5	3.6
D23.323 Other Technical Occupations in Health Care (Except Dental)	488	3.1	3.1	4.7	3.2
D31.341 Assisting Occupations in Support of Health Services	920	3.6	3.6	5.2	3.7
E01.411 Judges, Lawyers and Quebec Notaries	385	1.5	1.5	2.9	1.5
E02.415 Psychologists, Social Workers, Counsellors, Clergy & Probation Officers	576	2.6	2.6	4.2	2.7
E03 Policy and program officers researchers and consultants	575	1.8	1.6	2.6	1.7
E11.412 University Professors and Assistants	391	1.3	0.9	0.3	1.1

New Caledonia College Region

Projected Annual Growth Rates in Occupational Demand

	Estimated Employment	Average Annual % Change			Avg Annual % Chg Over 4 Years
	<u>2005</u>	<u>2007/2005</u>	<u>2009/2007</u>	<u>2010/2009</u>	<u>2009/2005</u>
E12.413 College and Other Vocational Instructors	463	1.4	1.0	0.6	1.2
E13.414 Secondary and Elementary School Teachers & Educational Counsellors	2,091	1.3	0.9	0.2	1.1
E21.421 Paralegals, Social Services Workers & Occupations in Education & Religion n.e.c.	1,502	2.8	2.8	3.8	2.8
F01 Librarians, archivists, conservators and curators	62	1.6	1.4	1.2	1.5
F02.512 Writing, Translating and Public Relations Professionals	346	1.7	1.4	2.2	1.6
F03.513 Creative and Performing Artists	476	1.6	1.2	1.0	1.4
F11.521 Technical Occupations in Libraries, Archives Museums & Art Galleries	86	1.6	1.4	0.9	1.5
F12.522 Photographers, Graphic Arts Technicians & Technical & coordinating Occupations in Motion Pictures Broadcasting & Performing	245	1.7	1.5	1.9	1.6
F13.523 Announcers and Other Performers	55	1.7	1.4	1.7	1.6
F14.524 Creative Designers and Craftspersons	456	1.6	1.6	3.4	1.6
F15.525 Athletes, Coaches, Referees and Related Occupations	353	1.6	1.4	1.6	1.5
G01.621 Sales and Service Supervisors	471	1.8	1.6	4.8	1.7
G11.641 Sales Representatives, Wholesale Trade	609	1.1	1.1	3.9	1.1
G12.622 Technical Sales Specialists, Wholesale Trade	187	1.2	1.4	3.6	1.3
G13.623 Insurance and Real Estate Sales Occupations and Buyers	363	1.5	0.7	4.4	1.1
G21.642 Retail Salespersons and Sales Clerks	2,897	1.7	1.0	5.5	1.4
G31.661 Cashiers	1,290	1.7	1.1	5.5	1.4
G41.624 Chefs and Cooks	1,177	1.7	2.1	4.6	1.9
G51.645 Occupations in Food and Beverage Service	1,482	1.5	2.0	4.7	1.8
G61.626 Police Officers and Fire-fighters	379	1.1	1.0	0.9	1.1
G62.646 Other Occupations in Protective Service	318	1.2	1.1	1.4	1.2
G63.665 Security Guards and Related Occupations	131	1.5	1.5	3.5	1.5
G71.643 Occupations in Travel and Accommodation	340	2.3	2.4	3.6	2.4
G72.644 Tour and Recreational Guides and Casino Occupations	115	1.8	1.5	1.8	1.7
G73.667 Other Occupations in Travel Accommodation, Amusement & Recreation	111	1.9	1.7	2.3	1.8
G81.647 Childcare and Home Support Workers	1,398	2.4	2.3	3.5	2.4
G91.627 Technical Occupations in Personal Service	367	1.6	1.5	5.3	1.6
G92.648 Other Occupations in Personal Service	203	1.6	1.4	5.1	1.5

New Caledonia College Region

Projected Annual Growth Rates in Occupational Demand

	Estimated Employment	Average Annual % Change			Avg Annual % Chg Over 4 Years
	<u>2005</u>	<u>2007/2005</u>	<u>2009/2007</u>	<u>2010/2009</u>	<u>2009/2005</u>
G93.666 Cleaners	1,224	1.9	2.0	3.4	2.0
G94.625 Butchers and Bakers	305	2.0	1.1	5.1	1.6
G96.664 Food Counter Attendants, Kitchen Helpers & Related Occupations	1,466	1.7	2.1	4.7	2.0
G97.662 Other Sales and Related Occupations	1,091	1.8	1.0	5.7	1.4
G98.668 Other Elemental Service Occupations	196	1.9	1.9	4.7	1.9
H01.721 Contractors and Supervisors, Trades and Related Workers	590	2.8	5.8	-2.3	4.5
H02.722 Supervisors, Railway and Motor Transportation Occupations	91	3.5	2.4	2.7	3.0
H11.725 Plumbers, Pipefitters and Gas Fitters	404	3.1	6.3	-3.5	4.9
H12.727 Carpenters and Cabinetmakers	1,083	2.9	6.8	-3.7	5.1
H13.728 Masonry and Plastering Trades	382	3.4	8.1	-5.2	6.0
H14.729 Other Construction Trades	662	3.2	7.5	-4.5	5.6
H21.724 Electrical Trades and Telecommunications Occupations	861	2.4	4.4	-1.1	3.5
H22.735 Stationary Engineers and Power Station and System Operators	125	1.9	1.4	2.1	1.7
H31.723 Machinists and Related Occupations	121	1.4	1.7	5.0	1.6
H32.726 Metal Forming, Shaping and Erecting Trades	547	2.2	3.8	0.9	3.1
H41.731 Machinery & Transportation Equipment Mechanics (Except Motor Vehicle)	1,330	1.8	1.9	2.6	1.9
H42.732 Automotive service technicians	694	1.6	1.3	4.9	1.5
H43.733 Other Mechanics	108	2.1	1.9	4.0	2.0
H51.734 Upholsterers, Tailors, Shoe Repairers, Jewellers & Related Occupations	121	1.5	1.5	5.7	1.5
H52.738 Printing Press Operators, Commercial Divers & Other Trades & Related Occupations n.e.c.	229	0.8	1.2	4.6	1.0
H53.744 Other installers repairers and servicers	299	2.2	3.7	0.7	3.1
H61.742 Heavy Equipment Operators	614	2.6	4.4	-1.3	3.6
H62.737 Crane Operators Drillers and Blasters	116	2.5	4.4	-1.2	3.5
H71.741 Motor Vehicle and Transit Drivers	2,394	1.1	1.6	2.3	1.4
H72.736 Train Crew Operating Occupations	252	4.4	2.7	2.8	3.7
H73.743 Other Transport Equipment Operators and Related Workers	224	3.4	2.3	2.6	2.9
H81.745 Longshore Workers and Material Handlers	1,011	1.2	1.3	3.8	1.2
H82.761 Trades Helpers and Labourers	630	3.0	6.8	-3.8	5.1

New Caledonia College Region

Projected Annual Growth Rates in Occupational Demand

	Estimated Employment	Average Annual % Change			Avg Annual % Chg Over 4 Years
	<u>2005</u>	<u>2007/2005</u>	<u>2009/2007</u>	<u>2010/2009</u>	<u>2009/2005</u>
H83.762 Public Works and Other Labourers n.e.c.	112	2.3	2.6	1.1	2.5
I01.825 Contractors, Operators & Supervisors in Agriculture, Horticulture & Aquaculture	753	1.0	0.5	3.9	0.7
I02.843 Agriculture and Horticulture Workers	628	1.0	0.4	4.0	0.7
I11.821 Supervisors, Logging and Forestry	239	1.4	0.1	0.9	0.7
I12.822 Supervisors, Mining Oil and Gas	42	3.9	3.7	3.7	3.9
I13.823 Underground Miners, Oil and Gas Drillers and Related Workers	49	4.5	3.4	3.8	4.1
I14.841 Mine Service Workers and Operators in Oil and Gas Drilling	30	5.1	3.5	1.8	4.4
I15.824 Logging Machinery Operators	413	1.5	0.0	0.5	0.8
I16.842 Logging and Forestry Workers	639	1.7	-0.2	-0.4	0.7
I17.826 Fishing Vessel Masters and Skippers and Fishermen/women	14	1.6	1.2	6.0	1.4
I18.844 Other Fishing and Trapping Occupations	-	-	-	-	-
I21.861 Primary Production Labourers	975	1.6	0.5	1.1	1.0
J01.921 Supervisors, Processing Occupations	450	1.4	1.0	3.9	1.2
J02.922 Supervisors, Assembly and Fabrication	56	1.2	1.8	4.8	1.5
J11.923 Central Control & Process Operators in Manufacturing & Processing	147	5.0	1.4	0.5	3.2
J12.941 Machine Operators & Related Workers in Metal & Mineral Products Processing	65	2.0	3.1	3.4	2.6
J13.942 Machine Operators & Related Workers in Chemical, Plastic & Rubber Processing	40	1.6	1.5	2.7	1.6
J14.943 Machine Operators & Related Workers in Pulp & Paper Production & Wood Processing	1,882	0.7	0.9	4.4	0.8
J15.944 Machine Operators and Related Workers in Textile Processing	19	1.5	0.9	3.9	1.2
J16.945 Machine Operators and Related Workers in Fabric, Fur & Leather Products Manufacturing	103	1.3	1.6	6.1	1.4
J17.946 Machine Operators & Related Workers in Food, Beverage & Tobacco Processing	77	3.0	1.4	2.3	2.2
J18.947 Printing Machine Operators and Related Occupations	120	1.5	1.4	5.1	1.5
J19.951 Machining, Metalworking, Woodworking & Related Machine Operators	132	0.8	1.3	5.0	1.1
J21.948 Mechanical Electrical and Electronics Assemblers	116	1.4	1.8	5.3	1.6

New Caledonia College Region

Projected Annual Growth Rates in Occupational Demand

	Estimated Employment	Average Annual % Change			Avg Annual % Chg Over 4 Years
	<u>2005</u>	<u>2007/2005</u>	<u>2009/2007</u>	<u>2010/2009</u>	<u>2009/2005</u>
J22.949 Other Assembly and Related Occupations	336	1.3	1.9	4.5	1.6
J31.961 Labourers in Processing Manufacturing and Utilities	2,324	0.8	1.0	4.5	0.9

Appendix 5

Projected Annual Growth Rates in Occupational Demand (4-digit)

New Caledonia College Region

Projected Annual Growth Rates in Occupational Demand

	Estimated Employment	Average Annual % Change			Avg Annual % Chg Over 4 Years
	<u>2005</u>	<u>2007/2005</u>	<u>2009/2007</u>	<u>2010/2009</u>	<u>2009/2005</u>
All occupations	75,311	1.8	2.0	2.8	2.0
A Management occupations	7,839	1.8	2.0	2.9	1.9
A0 Senior management occupations	908	1.7	1.9	2.5	1.8
A01.001 Legislators and Senior Management	907	1.7	1.9	2.5	1.8
A011.0011 Legislators	35	1.1	1.0	0.7	1.0
A012.0012 Senior Government Managers and Officials	100	1.2	1.2	1.1	1.2
A013.0013 Senior Managers - Financial, Communications and Other Business Services	230	1.5	1.2	3.4	1.4
A014.0014 Senior Managers - Health, Education, Social and Community Services and Membership Organizations	95	2.4	2.3	4.1	2.4
A015.0015 Senior Managers - Trade, Broadcasting and Other Services n.e.c.	185	1.2	1.0	4.5	1.1
A016.0016 Senior Managers - Goods Production, Utilities, Transportation and Construction	261	2.2	3.4	0.5	2.8
A1 Specialist managers	1,623	1.6	1.5	3.1	1.6
A11.011 Administrative Services Managers	561	1.7	1.5	3.0	1.7
A111.0111 Financial Managers	271	1.6	1.4	3.0	1.5
A112.0112 Human Resources Managers	112	2.0	1.5	3.0	1.8
A113.0113 Purchasing Managers	37	1.4	1.4	3.4	1.4
A114.0114 Other Administrative Services Managers	139	1.8	1.9	2.9	1.9
A12.021 Managers in Engineering, Architecture, Science and Information Systems	257	1.6	1.7	2.7	1.7
A121.0211 Engineering Managers	62	1.7	2.3	2.3	2.0
A122.0213 Computer and Information Systems Managers	165	1.5	1.4	2.9	1.5
A123.0212 Architecture and Science Managers	26	1.8	1.9	2.4	1.9
A13.061 Sales, Marketing and Advertising Managers	562	1.4	1.4	3.5	1.4
A131.0611 Sales, Marketing and Advertising Managers	564	1.4	1.4	3.5	1.4
A14.072 Facility Operation and Maintenance Managers	241	1.7	1.6	2.9	1.7
A141.0721 Facility Operation and Maintenance Managers	241	1.7	1.6	2.9	1.7

New Caledonia College Region

Projected Annual Growth Rates in Occupational Demand

	Estimated Employment	Average Annual % Change			Avg Annual % Chg Over 4 Years
	<u>2005</u>	<u>2007/2005</u>	<u>2009/2007</u>	<u>2010/2009</u>	<u>2009/2005</u>
A2 Managers in retail trade, food and accommodation services	2,723	1.7	1.4	5.2	1.6
A21.062 Managers in Retail Trade	1,792	1.7	1.1	5.5	1.4
A211.0621 Retail Trade Managers	1,790	1.7	1.1	5.5	1.4
A22.063 Managers in Food Service and Accommodation	934	1.5	2.0	4.7	1.8
A221.0631 Restaurant and Food Service Managers	696	1.5	2.0	4.7	1.8
A222.0632 Accommodation Service Managers	239	1.5	2.0	4.6	1.8
A3 Other managers n.e.c.	2,584	2.1	3.0	0.6	2.6
A30.012 Managers in Financial and Business Services	416	1.5	0.7	4.2	1.1
A301.0121 Insurance, Real Estate and Financial Brokerage Managers	106	1.6	1.0	3.6	1.3
A302.0122 Banking, Credit and Other Investment Managers	272	1.4	0.4	4.7	0.9
A303.0123 Other Business Services Managers	38	1.6	1.9	2.9	1.8
A31.013 Managers in Communication (Except Broadcasting)	51	1.9	1.7	1.5	1.8
A311.0131 Telecommunication Carriers Managers	45	1.7	1.6	1.3	1.7
A312.0132 Postal and Courier Services Managers	-	-	-	-	-
A32.031 Managers in Health, Education, Social and Community Services	389	2.1	1.9	2.0	2.0
A321.0311 Managers in Health Care	97	3.5	3.6	4.8	3.7
A322.0312 Administrators - Post-Secondary Education and Vocational Training	86	1.3	1.0	0.3	1.2
A323.0313 School Principals and Administrators of Elementary and Secondary Education	150	1.3	0.9	0.2	1.1
A324.0314 Managers in Social, Community and Correctional Services	57	2.6	2.6	4.1	2.7
A33.041 Managers in Public Administration	61	1.3	1.2	1.6	1.3
A331.0411 Government Managers - Health and Social Policy Development and Program Administration	22	1.6	1.6	2.1	1.7
A332.0412 Government Managers - Economic Analysis, Policy Development and Program Administration	21	1.1	1.0	1.4	1.1
A333.0413 Government Managers - Education Policy Development and Program Administration	-	-	-	-	-
A334.0414 Other Managers in Public Administration	13	1.1	1.1	1.0	1.1
A34.051 Managers in Art, Culture, Recreation and Sport	89	1.7	1.5	1.7	1.6

New Caledonia College Region

Projected Annual Growth Rates in Occupational Demand

	Estimated Employment	Average Annual % Change			Avg Annual % Chg Over 4 Years
	<u>2005</u>	<u>2007/2005</u>	<u>2009/2007</u>	<u>2010/2009</u>	<u>2009/2005</u>
A341.0511 Library, Archive, Museum and Art Gallery Managers	15	1.6	1.6	1.4	1.6
A342.0512 Managers - Publishing, Motion Pictures, Broadcasting and Performing Arts	35	1.7	1.5	1.6	1.7
A343.0513 Recreation and Sports Program and Service Directors	41	1.7	1.4	1.7	1.5
A35.064 Managers in Protective Service	79	1.0	1.0	0.9	1.0
A351.0641 Commissioned Police Officers	14	1.0	1.0	0.9	1.0
A352.0642 Fire Chiefs and Senior Fire-fighting Officers	14	1.1	0.9	0.9	1.0
A353.0643 Commissioned Officers, Armed Forces	52	1.0	1.0	0.9	1.0
A36.065 Managers in Other Services	103	1.7	1.7	3.6	1.7
A361 0651 Other Services Managers	101	1.7	1.7	3.6	1.8
A37.071 Managers in Construction and Transportation	834	2.9	6.6	-3.5	4.9
A371.0711 Construction Managers	454	3.3	7.8	-4.9	5.8
A372.0712 Residential Home Builders and Renovators	194	3.4	8.1	-5.2	6.0
A373.0713 Transportation Managers	184	1.5	1.9	2.6	1.7
A38.081 Managers in Primary Production (Except Agriculture)	222	1.7	0.5	1.1	1.1
A381.0811 Primary Production Managers (Except Agriculture)	223	1.7	0.5	1.1	1.1
A39.091 Managers in Manufacturing and Utilities	346	1.5	1.3	4.3	1.5
A391.0911 Manufacturing Managers	309	1.5	1.3	4.6	1.4
A392.0912 Utilities Managers	36	2.7	1.5	1.7	2.2
B Business, finance and administrative occupations	11,996	1.8	1.7	2.9	1.7
B0 Professional occupations in business and finance	1,901	1.6	1.3	3.3	1.5
B01.111 Auditors, Accountants and Investment Professionals	1,538	1.6	1.2	3.4	1.4
B011.1111 Financial Auditors and Accountants	972	1.6	1.6	2.9	1.6
B012.1112 Financial and Investment Analysts	118	1.9	0.9	3.6	1.4
B013.1113 Securities Agents, Investment Dealers and Brokers	148	1.4	0.4	4.6	0.9
B014.1114 Other Financial Officers	301	1.5	0.5	4.3	1.0
B02.112 Human Resources and Business Service Professionals	362	1.6	1.5	3.0	1.6
B021.1121 Specialists in Human Resources	148	1.9	1.4	3.1	1.7
B022.1122 Professional Occupations in Business Services to Management	213	1.6	1.6	2.9	1.6

New Caledonia College Region

Projected Annual Growth Rates in Occupational Demand

	Estimated Employment	Average Annual % Change			Avg Annual % Chg Over 4 Years
	<u>2005</u>	<u>2007/2005</u>	<u>2009/2007</u>	<u>2010/2009</u>	<u>2009/2005</u>
B1 Finance and insurance administration occupations	1,157	1.7	1.7	2.7	1.7
B11.123 Finance and Insurance Administrative Occupations	1,155	1.7	1.7	2.7	1.7
B111.1231 Bookkeepers	832	1.7	2.1	2.1	2.0
B112.1232 Loan Officers	97	1.4	0.4	4.5	0.9
B113.1233 Insurance Adjusters and Claims Examiners	143	1.5	0.4	4.5	0.9
B114.1234 Insurance Underwriters	36	1.5	0.4	4.6	0.9
B115.1235 Assessors, Valuers and Appraisers	32	1.2	1.1	1.7	1.2
B116.1236 Customs, Ship and Other Brokers	18	2.2	2.0	3.3	2.2
B2 Secretaries	1,558	1.9	2.2	2.3	2.1
B21.124 Secretaries, Records and Transcriptionists	1,555	1.9	2.2	2.3	2.1
B211.1241 Secretaries (Except Legal and Medical)	1,087	1.8	2.1	1.7	1.9
B212.1242 Legal Secretaries	282	1.6	1.5	3.0	1.6
B213.1243 Medical Secretaries	165	3.7	3.8	5.1	3.9
B214.1244 Court Recorders and Medical Transcriptionists	21	3.2	3.3	4.4	3.4
B3 Administrative and regulatory occupations	1,287	1.8	2.0	2.4	1.9
B31.122 Administrative and Regulatory Occupations	1,286	1.7	2.0	2.4	1.9
B311.1221 Administrative Officers	801	1.9	2.2	2.5	2.1
B312.1222 Executive Assistants	110	1.7	1.7	2.5	1.8
B313.1223 Personnel and Recruitment Officers	39	1.7	1.7	2.3	1.7
B314.1224 Property Administrators	51	2.1	3.1	0.8	2.6
B315.1225 Purchasing Agents and Officers	121	1.4	1.6	3.3	1.5
B316.1226 Conference and Event Planners	49	1.6	1.4	2.7	1.5
B317.1227 Court Officers and Justices of the Peace	17	1.0	1.0	0.9	1.0
B318.1228 Immigration, Employment Insurance and Revenue Officers	96	1.0	1.0	0.9	1.0
B4 Clerical supervisors	250	1.6	1.3	3.3	1.5
B41.121 Clerical Supervisors	251	1.6	1.3	3.3	1.5
B411.1211 Supervisors, General Office & Administrative Support Clerks	60	1.8	1.6	2.6	1.7
B412.1212 Supervisors, Finance and Insurance Clerks	76	1.6	1.0	3.8	1.3
B413.1213 Supervisors, Library Correspondence and Related Information	35	1.4	1.1	2.2	1.2
B414.1214 Supervisors, Mail and Message Distribution Occupations	17	2.7	2.4	2.5	2.6

New Caledonia College Region

Projected Annual Growth Rates in Occupational Demand

	Estimated Employment	Average Annual % Change			Avg Annual % Chg Over 4 Years
	<u>2005</u>	<u>2007/2005</u>	<u>2009/2007</u>	<u>2010/2009</u>	<u>2009/2005</u>
B415.1215 Supervisors, Recording, Distributing and Scheduling Occupations	61	1.3	1.3	4.1	1.3
B5 Clerical occupations	5,844	1.8	1.6	3.2	1.7
B51.141 Clerical Occupations, General Office Skills	1,972	2.0	2.0	2.9	2.0
B511.1411 General Office Clerks	1,269	1.8	1.8	2.4	1.9
B513.1413 Records Management and Filing Clerks	92	2.2	2.1	3.3	2.2
B514.1414 Receptionists and Switchboard Operators	611	2.3	2.4	3.9	2.4
B52.142 Office Equipment Operators	232	1.6	1.4	2.7	1.5
B522.1422 Data Entry Clerks	184	1.6	1.4	2.8	1.5
B523.1423 Desktop Publishing Operators and Related Occupations	20	1.5	1.4	2.8	1.4
B524.1424 Telephone Operators	30	1.6	1.4	1.8	1.5
B53.143 Finance and Insurance Clerks	1,430	1.6	1.1	3.6	1.4
B531.1431 Accounting and Related Clerks	647	1.6	1.7	2.9	1.7
B532.1432 Payroll Clerks	158	1.7	1.7	2.7	1.7
B533.1433 Customer Service Representatives - Financial Services	439	1.4	0.4	4.7	0.9
B534.1434 Banking, Insurance and Other Financial Clerks	138	1.5	0.5	4.6	1.0
B535.1435 Collectors	52	2.2	1.0	3.2	1.6
B54.144 Administrative Support Clerks	397	1.8	1.8	2.7	1.8
B541.1441 Administrative Clerks	331	2.0	1.8	2.8	1.9
B542.1442 Personnel Clerks	45	2.0	1.8	3.0	1.9
B543.1443 Court Clerks	23	1.0	1.0	0.9	1.0
B55.145 Library, Correspondence and Related Information Clerks	726	1.6	1.2	2.8	1.4
B551.1451 Library Clerks	46	1.7	1.3	1.0	1.5
B552.1452 Correspondence, Publication and Related Clerks	18	1.7	1.4	2.1	1.6
B553.1453 Customer Service, Information and Related Clerks	520	1.7	1.2	3.5	1.5
B554.1454 Survey Interviewers and Statistical Clerks	142	1.1	1.1	1.3	1.1
B56.146 Mail and Message Distribution Occupations	323	2.4	2.1	3.1	2.3
B561.1461 Mail, Postal and Related Clerks	121	2.4	2.2	2.9	2.4
B562.1462 Letter Carriers	97	3.0	2.7	2.8	2.9
B563.1463 Couriers, Messengers and Door-to-Door Distributors	106	1.7	1.3	3.8	1.5

New Caledonia College Region

Projected Annual Growth Rates in Occupational Demand

	Estimated Employment	Average Annual % Change			Avg Annual % Chg Over 4 Years
	<u>2005</u>	<u>2007/2005</u>	<u>2009/2007</u>	<u>2010/2009</u>	<u>2009/2005</u>
B57.147 Recording, Scheduling and Distributing Occupations	764	1.7	1.4	3.8	1.6
B571.1471 Shippers and Receivers	357	1.7	1.3	4.2	1.5
B572.1472 Storekeepers and Parts Clerks	103	1.6	1.2	4.9	1.4
B573.1473 Production Clerks	36	2.6	1.7	3.8	2.2
B574.1474 Purchasing and Inventory Clerks	115	2.0	1.4	4.0	1.8
B575.1475 Dispatchers and Radio Operators	143	1.3	1.9	1.8	1.6
B576.1476 Transportation Route and Crew	-	-	-	-	-
C Natural and applied sciences and related occupations	4,978	1.8	1.6	2.2	1.7
C0 Professional occupations in natural and applied sciences	2,678	1.8	1.5	2.5	1.7
C01.211 Physical Science Professionals	123	2.4	2.0	2.9	2.3
C011.2111 Physicists and Astronomers	12	1.6	1.6	3.0	1.6
C012.2112 Chemists	43	2.7	1.6	2.7	2.2
C013.2113 Geologists, Geochemists and Geophysicists	56	2.6	2.4	3.0	2.6
C014.2114 Meteorologists	-	-	-	-	-
C015.2115 Other Professional Occupations in Physical Sciences	-	-	-	-	-
C02.212 Life Science Professionals	436	1.4	0.6	1.6	1.0
C021.2121 Biologists and Related Scientists	104	1.6	1.4	2.2	1.5
C022.2122 Forestry Professionals	313	1.3	0.3	1.4	0.8
C023.2123 Agricultural Representatives, Consultants and Specialists	15	1.3	1.2	2.7	1.3
C03.213 Civil, Mechanical, Electrical and Chemical Engineers	497	2.0	2.1	2.0	2.1
C031.2131 Civil Engineers	230	1.9	2.5	1.3	2.2
C032.2132 Mechanical Engineers	118	2.1	1.7	2.7	1.9
C033.2133 Electrical and Electronics Engineers	109	1.6	1.8	3.0	1.7
C034.2134 Chemical Engineers	39	4.3	1.3	1.6	2.9
C04.214 Other Engineers	226	2.3	1.8	2.9	2.1
C041.2141 Industrial and Manufacturing Engineers	27	1.8	2.0	2.7	2.0
C042.2142 Metallurgical and Materials Engineers	-	-	-	-	-
C043.2143 Mining Engineers	20	1.8	2.6	1.8	2.2
C044.2144 Geological Engineers	22	1.8	1.9	2.5	1.9
C045.2145 Petroleum Engineers	-	-	-	-	-

New Caledonia College Region

Projected Annual Growth Rates in Occupational Demand

	Estimated Employment	Average Annual % Change			Avg Annual % Chg Over 4 Years
	<u>2005</u>	<u>2007/2005</u>	<u>2009/2007</u>	<u>2010/2009</u>	<u>2009/2005</u>
C046.2146 Aerospace Engineers	-	-	-	-	-
C047.2147 Computer Engineers (Except Software Engineers)	94	1.5	1.6	3.2	1.6
C048.2148 Other Professional Engineers n.e.c.	42	1.8	1.8	3.3	1.8
C05.215 Architects, Urban Planners and Land Surveyors	207	1.7	2.2	1.8	2.0
C051.2151 Architects	104	1.7	2.0	2.6	1.9
C052.2152 Landscape Architects	-	-	-	-	-
C053.2153 Urban and Land Use Planners	43	1.8	2.9	-0.4	2.4
C054.2154 Land Surveyors	47	1.7	2.2	1.9	2.0
C06.216 Mathematicians, Statisticians and Actuaries	16	1.8	1.8	2.6	1.8
C061.2161 Mathematicians, Statisticians and Actuaries	17	1.7	1.5	3.0	1.6
C07.217 Computer and Information Systems Professionals	1,177	1.6	1.5	2.9	1.6
C071.2171 Information Systems Analysts and Consultants	380	1.6	1.4	2.9	1.5
C072.2172 Database Analysts and Data Administrators	60	1.7	1.6	2.7	1.6
C073.2173 Software Engineers	154	1.6	1.5	3.0	1.6
C074.2174 Computer Programmers and Interactive Media Developers	424	1.7	1.4	2.9	1.6
C075.2175 Web Designers and Developers	156	1.6	1.5	2.9	1.6
C1 Technical occupations related to natural and applied sciences	2,301	1.9	1.7	1.8	1.8
C11.221 Technical Occupations in Physical Sciences	89	2.2	2.0	2.7	2.2
C111.2211 Chemical Technologists and Technicians	48	1.8	1.4	1.9	1.6
C112.2212 Geological and Mineral Technologists and Technicians	35	3.1	2.9	3.5	3.1
C113.2213 Meteorological Technicians	-	-	-	-	-
C12.222 Technical Occupations in Life Sciences	560	1.4	0.4	1.0	0.9
C121.2221 Biological Technologists and Technicians	67	1.4	1.1	2.5	1.2
C122.2222 Agricultural and Fish Products Inspectors	18	1.2	1.0	1.6	1.1
C123.2223 Forestry Technologists and Technicians	400	1.4	0.2	0.7	0.8
C124.2224 Conservation and Fishery Officers	39	1.2	0.9	0.9	1.1
C125.2225 Landscape and Horticultural Technicians and Specialists	38	1.6	1.5	1.3	1.6
C13.223 Technical Occupations in Civil, Mechanical and Industrial Engineering	213	2.3	4.3	-0.8	3.4
C131.2231 Civil Engineering Technologists and Technicians	53	1.8	2.6	0.7	2.2

New Caledonia College Region

Projected Annual Growth Rates in Occupational Demand

	Estimated Employment	Average Annual % Change			Avg Annual % Chg Over 4 Years
	<u>2005</u>	<u>2007/2005</u>	<u>2009/2007</u>	<u>2010/2009</u>	<u>2009/2005</u>
C132.2232 Mechanical Engineering Technologists and Technicians	40	2.7	2.5	2.1	2.6
C133.2233 Industrial Engineering and Manufacturing Technologists and Technicians	30	1.7	1.9	2.6	1.9
C134.2234 Construction Estimators	91	3.0	6.9	-3.9	5.2
C14.224 Technical Occupations in Electronics & Electrical Engineering	390	1.9	1.9	2.7	1.9
C141.2241 Electrical and Electronics Engineering Technologists and Technicians	112	1.6	1.7	3.2	1.7
C142.2242 Electronic Service Technicians (Household and Business Equipment)	201	1.7	2.1	2.9	2.0
C143.2243 Industrial Instrument Technicians and Mechanics	56	3.2	1.6	1.2	2.4
C144.2244 Aircraft Instrument Electrical and Avionics Mechanics, Technicians and Inspectors	23	2.3	2.2	2.6	2.3
C15.225 Technical Occupations in Architecture, Drafting, Surveying and Mapping	302	1.7	1.8	2.4	1.8
C151.2251 Architectural Technologists and Technicians	31	1.7	2.1	2.3	1.9
C152.2252 Industrial Designers	24	1.6	2.1	3.0	1.9
C153.2253 Drafting Technologists and Technicians	157	1.9	2.0	2.5	2.0
C154.2254 Land Survey Technologists and Technicians	18	1.8	1.9	1.1	1.9
C155.2255 Mapping and Related Technologists and Technicians	75	1.3	1.1	2.4	1.2
C16.226 Other Technical Inspectors and Regulatory Officers	144	1.9	2.3	1.5	2.1
C161.2261 Nondestructive Testers and Inspectors	13	1.7	1.5	2.9	1.6
C162.2262 Engineering Inspectors and Regulatory Officers	19	1.7	1.7	2.6	1.8
C163.2263 Inspectors in Public and Environmental Health and Occupational Health and Safety	62	2.0	2.2	2.1	2.1
C164.2264 Construction Inspectors	50	1.8	2.8	0.0	2.4
C17.227 Transportation Officers and Controllers	185	2.7	2.1	2.4	2.5
C171.2271 Air Pilots, Flight Engineers and Flying Instructors	86	2.6	2.1	2.3	2.4
C172.2272 Air Traffic Control and Related Occupations	23	2.6	2.3	2.4	2.5
C173.2273 Deck Officers, Water Transport	38	2.3	1.7	2.2	2.0
C174.2274 Engineer Officers, Water Transport	12	2.2	2.0	3.2	2.1

New Caledonia College Region

Projected Annual Growth Rates in Occupational Demand

	Estimated Employment	Average Annual % Change			Avg Annual % Chg Over 4 Years
	<u>2005</u>	<u>2007/2005</u>	<u>2009/2007</u>	<u>2010/2009</u>	<u>2009/2005</u>
C175.2275 Railway Traffic Controllers and Marine Traffic Regulators	24	3.9	2.5	2.6	3.3
C18.228 Technical Occupations in Computer and Information Systems	414	1.8	1.3	2.9	1.6
C181.2281 Computer and Network Operators and Web Technicians	218	1.9	1.4	2.8	1.7
C182.2282 User Support Technicians	163	1.8	1.3	2.9	1.5
C183.2283 Systems Testing Technicians	32	1.6	1.4	3.1	1.5
D Health occupations	3,665	3.5	3.5	5.1	3.6
D0 Professional occupations in health	849	3.4	3.4	5.1	3.5
D01.311 Physicians Dentists and Veterinarians	431	3.6	3.7	5.0	3.8
D011.3111 Specialist Physicians	94	3.8	3.9	5.1	4.0
D012.3112 General Practitioners and Family Physicians	200	3.8	3.9	5.2	4.0
D013.3113 Dentists	100	3.8	3.9	5.2	4.0
D014.3114 Veterinarians	37	1.6	1.6	3.0	1.6
D02.312 Optometrists, Chiropractors and Other Health Diagnosing and Treating Professionals	56	3.7	3.8	5.2	3.9
D021.3121 Optometrists	15	3.7	3.7	5.2	3.8
D022.3122 Chiropractors	28	3.8	3.9	5.2	4.0
D023.3123 Other Professional Occupations in Health Diagnosing and Treating	14	3.6	3.6	5.2	3.7
D03.313 Pharmacists, Dietitians and Nutritionists	164	2.4	1.9	5.6	2.2
D031.3131 Pharmacists	127	2.1	1.5	5.8	1.8
D032.3132 Dietitians and Nutritionists	36	3.5	3.5	5.0	3.6
D04.314 Therapy and Assessment Professionals	198	3.6	3.7	4.9	3.8
D041.3141 Audiologists and Speech-Language Pathologists	31	3.1	3.0	3.7	3.1
D042.3142 Physiotherapists	87	3.8	3.9	5.2	4.0
D043.3143 Occupational Therapists	47	3.8	3.9	5.1	4.0
D044.3144 Other Professional Occupations in Therapy and Assessment	33	3.5	3.5	4.8	3.6
D1 Nurse supervisors and registered nurses	954	3.8	3.9	5.1	3.9
D11.315 Nurse Supervisors and Registered Nurses	954	3.8	3.9	5.1	3.9
D111.3151 Head Nurses and Supervisors	32	3.6	3.7	5.0	3.8
D112.3152 Registered Nurses	921	3.8	3.9	5.1	4.0

New Caledonia College Region

Projected Annual Growth Rates in Occupational Demand

	Estimated Employment	Average Annual % Change			Avg Annual % Chg Over 4 Years
	<u>2005</u>	<u>2007/2005</u>	<u>2009/2007</u>	<u>2010/2009</u>	<u>2009/2005</u>
D2 Technical and related occupations in health	941	3.2	3.3	4.8	3.4
D21.321 Medical Technologists and Technicians (Except Dental Health)	354	3.3	3.4	4.8	3.5
D211.3211 Medical Laboratory Technologists and Pathologists' Assistants	106	3.5	3.6	4.9	3.7
D212.3212 Medical Laboratory Technicians	82	3.6	3.6	4.9	3.7
D213.3213 Veterinary and Animal Health Technologists and Technicians	51	1.7	1.7	3.2	1.7
D214.3214 Respiratory Therapists, Clinical Perfusionists and Cardio- Pulmonary Technologists	24	3.6	3.7	5.1	3.8
D215.3215 Medical Radiation Technologists	56	3.7	3.8	5.1	3.9
D216.3216 Medical Sonographers	13	3.8	3.9	5.2	4.0
D217.3217 Cardiology Technologists	-	-	-	-	-
D218.3218 Electroencephalographic and Other Diagnostic Technologists n.e.c.	-	-	-	-	-
D219.3219 Other Medical Technologists and Technicians (Except Dental Health)	-	-	-	-	-
D22.322 Technical Occupations in Dental Health Care	100	3.3	3.5	5.5	3.6
D221.3221 Denturists	-	-	-	-	-
D222.3222 Dental Hygienists and Dental Therapists	63	3.8	3.9	5.2	4.0
D223.3223 Dental Technologists, Technicians and Laboratory Bench Workers	28	2.3	2.8	6.2	2.6
D23.323 Other Technical Occupations in Health Care (Except Dental)	488	3.1	3.1	4.7	3.2
D231.3231 Opticians	46	2.1	1.4	5.8	1.8
D232.3232 Midwives and Practitioners of Natural Healing	37	3.4	3.4	5.2	3.5
D233.3233 Licensed Practical Nurses	194	3.8	3.9	5.2	4.0
D234.3234 Ambulance Attendants and Other Paramedical Occupations	136	2.4	2.6	3.5	2.6
D235.3235 Other Technical Occupations in Therapy and Assessment	75	3.1	3.1	5.2	3.2
D3 Assisting occupations in support of health services	919	3.6	3.6	5.2	3.7
D31.341 Assisting Occupations in Support of Health Services	920	3.6	3.6	5.2	3.7
D311.3411 Dental Assistants	155	3.8	3.9	5.1	4.0
D312.3413 Nurse Aides, Orderlies and Patient Service Associates	558	3.8	3.9	5.1	4.0

New Caledonia College Region

Projected Annual Growth Rates in Occupational Demand

	Estimated Employment	Average Annual % Change			Avg Annual % Chg Over 4 Years
	<u>2005</u>	<u>2007/2005</u>	<u>2009/2007</u>	<u>2010/2009</u>	<u>2009/2005</u>
D313.3414 Other Assisting Occupations in Support of Health Services	206	2.9	2.6	5.4	2.8
E Occupations in social science, education, government service & religion	5,978	1.9	1.6	2.0	1.8
E0 Judges, lawyers, psychologists, social workers, ministers of religion and policy and program officers	1,531	2.0	2.0	3.3	2.0
E01.411 Judges, Lawyers and Quebec Notaries	385	1.5	1.5	2.9	1.5
E011.4111 Judges	-	-	-	-	-
E012.4112 Lawyers and Quebec Notaries	375	1.5	1.5	3.0	1.5
E02.415 Psychologists, Social Workers, Counsellors, Clergy and Probation Officers	576	2.6	2.6	4.2	2.7
E021.4151 Psychologists	63	3.0	3.0	3.8	3.1
E022.4152 Social Workers	184	2.7	2.8	3.7	2.9
E023.4153 Family, Marriage and Other Related Counsellors	161	3.3	3.4	4.8	3.4
E024.4154 Ministers of Religion	135	1.7	1.6	5.2	1.6
E025.4155 Probation and Parole Officers and Related Occupations	32	1.3	1.3	1.3	1.3
E03 Policy and program officers, researchers and consultants	575	1.8	1.6	2.6	1.7
E031.4161 Natural and Applied Science Policy Researchers, Consultants and Program Officers	69	1.6	1.5	2.7	1.6
E032.4162 Economists and Economic Policy Researchers and Analysts	26	1.5	1.3	2.2	1.4
E033.4163 Business Development Officers and Marketing Researchers and Consultants	149	1.8	1.4	3.0	1.7
E034.4164 Social Policy Researchers, Consultants & Program Officers	95	1.7	1.6	2.5	1.7
E035.4166 Education Policy Researchers Consultants & Program Officers	59	1.4	1.1	0.9	1.3
E036.4167 Recreation, Sports and Fitness Program Supervisors and Consultants	63	2.2	2.1	3.0	2.2
E037.4168 Program Officers Unique to Government	28	1.0	1.0	0.9	1.0
E038.4169 Other Professional Occupations in Social Science	19	1.6	1.4	2.2	1.5
E039.4165 Health Policy Researchers, Consultants & Program Officers	63	2.4	2.4	3.7	2.5
E1 Teachers and professors	2,948	1.3	0.9	0.3	1.1
E11.412 University Professors and Assistants	391	1.3	0.9	0.3	1.1

New Caledonia College Region

Projected Annual Growth Rates in Occupational Demand

	Estimated Employment	Average Annual % Change			Avg Annual % Chg Over 4 Years
	<u>2005</u>	<u>2007/2005</u>	<u>2009/2007</u>	<u>2010/2009</u>	<u>2009/2005</u>
E111.4121 University Professors	198	1.3	0.9	0.2	1.1
E112.4122 Post-Secondary Teaching and Research Assistants	194	1.3	0.9	0.4	1.1
E12.413 College and Other Vocational Instructors	463	1.4	1.0	0.6	1.2
E121.4131 College and Other Vocational Instructors	464	1.4	1.0	0.5	1.2
E13.414 Secondary and Elementary School Teachers and Educational Counsellors	2,091	1.3	0.9	0.2	1.1
E131.4141 Secondary School Teachers	828	1.3	0.9	0.2	1.1
E132.4142 Elementary School and Kindergarten Teachers	1,152	1.3	0.9	0.2	1.1
E133.4143 Educational Counsellors	111	1.4	0.9	0.3	1.1
E2 Paralegals, social services workers and occupations in education and religion n.e.c.	1,502	2.8	2.8	3.8	2.8
E21.421 Paralegals, Social Services Workers and Occupations in Education and Religion n.e.c.	1,502	2.8	2.8	3.8	2.8
E211.4211 Paralegal and Related Occupations	152	1.5	1.5	3.0	1.5
E212.4212 Community and Social Service Workers	427	3.0	3.0	4.2	3.1
E213.4213 Employment Counsellors	64	2.3	2.3	3.2	2.4
E214.4215 Instructors and Teachers of Persons with Disabilities	47	2.0	1.8	1.8	1.9
E215.4216 Other Instructors	194	1.4	1.0	0.6	1.2
E216.4217 Other Religious Occupations	29	1.7	1.6	5.0	1.7
E217.4214 Early Childhood Educators and Assistants	587	3.6	3.7	4.9	3.8
F Occupations in art, culture, recreation and sport	2,079	1.6	1.4	2.0	1.5
F0 Professional Occupations in Art and Culture	883	1.6	1.3	1.5	1.5
F01 Librarians, archivists, conservators and curators	62	1.6	1.4	1.2	1.5
F011.5111 Librarians	45	1.6	1.3	1.2	1.5
F012.5112 Conservators and Curators	-	-	-	-	-
F013.5113 Archivists	-	-	-	-	-
F02.512 Writing, Translating and Public Relations Professionals	346	1.7	1.4	2.2	1.6
F021.5121 Authors and Writers	109	1.7	1.4	1.8	1.6
F022.5122 Editors	46	1.7	1.3	1.5	1.5
F023.5123 Journalists	36	1.7	1.4	1.2	1.6

New Caledonia College Region

Projected Annual Growth Rates in Occupational Demand

	Estimated Employment	Average Annual % Change			Avg Annual % Chg Over 4 Years
	<u>2005</u>	<u>2007/2005</u>	<u>2009/2007</u>	<u>2010/2009</u>	<u>2009/2005</u>
F024.5124 Professional Occupations in Public Relations and Communications	114	1.6	1.5	2.8	1.6
F025.5125 Translators, Terminologists and Interpreters	44	1.6	1.6	2.7	1.6
F03.513 Creative and Performing Artists	476	1.6	1.2	1.0	1.4
F031.5131 Producers, Directors, Choreographers & Related Occupations	90	1.7	1.3	1.2	1.5
F032.5132 Conductors, Composers and Arrangers	14	2.0	1.5	2.0	1.8
F033.5133 Musicians and Singers	180	1.4	1.0	0.7	1.2
F034.5134 Dancers	42	1.4	1.0	0.4	1.2
F035.5135 Actors and Comedians	53	1.7	1.4	1.1	1.6
F036.5136 Painters, Sculptors and Other Visual Artists	97	1.7	1.3	1.3	1.5
F1 Technical occupations in art, culture, recreation and sport	1,195	1.6	1.5	2.3	1.6
F11.521 Technical Occupations in Libraries, Archives, Museums and Art Galleries	86	1.6	1.4	0.9	1.5
F111.5211 Library and Archive Technicians and Assistants	68	1.6	1.2	1.0	1.4
F112.5212 Technical Occupations Related to Museums and Art Galleries	18	1.8	2.1	0.6	2.0
F12.522 Photographers, Graphic Arts Technicians & Technical & coordinating Occupations in Motion Pictures, Broadcasting & Performing Arts	245	1.7	1.5	1.9	1.6
F121.5221 Photographers	70	1.6	1.6	3.0	1.6
F122.5222 Film and Video Camera Operators	20	1.7	1.4	1.2	1.6
F123.5223 Graphic Arts Technicians	19	1.6	1.8	2.6	1.7
F124.5224 Broadcast Technicians	-	-	-	-	-
F125.5225 Audio and Video Recording Technicians	31	1.7	1.4	1.6	1.6
F126.5226 Other Technical and Co-ordinating Occupations in Motion Pictures, Broadcasting and the Performing Arts	44	1.7	1.3	1.5	1.5
F127.5227 Support Occupations in Motion Pictures, Broadcasting and the Performing Arts	50	1.7	1.4	1.1	1.6
F13.523 Announcers and Other Performers	55	1.7	1.4	1.7	1.6
F131.5231 Announcers and Other Broadcasters	42	1.7	1.4	1.6	1.6
F132.5232 Other Performers	13	1.6	1.4	2.0	1.6
F14.524 Creative Designers and Craftspersons	456	1.6	1.6	3.4	1.6

New Caledonia College Region

Projected Annual Growth Rates in Occupational Demand

	Estimated Employment	Average Annual % Change			Avg Annual % Chg Over 4 Years
	<u>2005</u>	<u>2007/2005</u>	<u>2009/2007</u>	<u>2010/2009</u>	<u>2009/2005</u>
F141.5241 Graphic Designers and Illustrators	210	1.6	1.5	3.1	1.6
F142.5242 Interior Designers	70	1.8	2.2	2.5	2.0
F143.5243 Theatre, Fashion, Exhibit and Other Creative Designers	45	1.6	1.5	3.3	1.6
F144.5244 Artisans and Craftspersons	126	1.4	1.4	4.6	1.4
F145.5245 Patternmakers - Textile, Leather and Fur Products	-	-	-	-	-
F15.525 Athletes, Coaches, Referees and Related Occupations	353	1.6	1.4	1.6	1.5
F151.5251 Athletes	13	1.7	1.1	0.7	1.4
F152.5252 Coaches	48	1.5	1.0	0.7	1.3
F153.5253 Sports Officials and Referees	26	1.7	1.4	2.1	1.6
F154.5254 Program Leaders and Instructors in Recreation and Sport	266	1.7	1.4	1.7	1.6
G Sales and service occupations	16,123	1.7	1.6	4.5	1.7
G0 Sales and service supervisors	471	1.8	1.6	4.8	1.7
G01.621 Sales and Service Supervisors	471	1.8	1.6	4.8	1.7
G011.6211 Retail Trade Supervisors	223	1.8	1.0	5.6	1.4
G012.6212 Food Service Supervisors	163	1.7	2.1	4.7	2.0
G013.6213 Executive Housekeepers	20	1.9	2.4	4.8	2.2
G014.6214 Dry Cleaning and Laundry Supervisors	-	-	-	-	-
G015.6215 Cleaning Supervisors	20	2.0	2.0	2.6	2.0
G016.6216 Other Service Supervisors	39	1.9	2.0	2.7	2.0
G1 Wholesale, technical, insurance, real estate sales specialists and retail,					
wholesale and grain buyers	1,160	1.3	1.0	4.0	1.2
G11.641 Sales Representatives, Wholesale Trade	609	1.1	1.1	3.9	1.1
G111.6411 Sales Representatives - Wholesale Trade (Non-Technical)	613	1.1	1.0	3.9	1.1
G12.622 Technical Sales Specialists, Wholesale Trade	187	1.2	1.4	3.6	1.3
G121.6221 Technical Sales Specialists - Wholesale Trade	186	1.2	1.4	3.6	1.3
G13.623 Insurance and Real Estate Sales Occupations and Buyers	363	1.5	0.7	4.4	1.1
G131.6231 Insurance Agents and Brokers	247	1.4	0.4	4.7	0.9
G132.6232 Real Estate Agents and Salespersons	16	2.6	4.4	-0.9	3.6
G133.6233 Retail and Wholesale Buyers	98	1.5	1.0	4.7	1.3
G134.6234 Grain Elevator Operators	-	-	-	-	-

New Caledonia College Region

Projected Annual Growth Rates in Occupational Demand

	Estimated Employment	Average Annual % Change			Avg Annual % Chg Over 4 Years
	<u>2005</u>	<u>2007/2005</u>	<u>2009/2007</u>	<u>2010/2009</u>	<u>2009/2005</u>
G2 Retail salespersons and sales clerks	2,898	1.7	1.0	5.5	1.4
G21.642 Retail Salespersons and Sales Clerks	2,897	1.7	1.0	5.5	1.4
G211.6421 Retail Salespersons and Sales Clerks	2,898	1.7	1.0	5.5	1.4
G3 Cashiers	1,290	1.7	1.1	5.5	1.4
G31.661 Cashiers	1,290	1.7	1.1	5.5	1.4
G311.6611 Cashiers	1,290	1.7	1.1	5.5	1.4
G4 Chefs and cooks	1,177	1.7	2.1	4.6	1.9
G41.624 Chefs and Cooks	1,177	1.7	2.1	4.6	1.9
G411.6241 Chefs	218	1.6	2.0	4.5	1.8
G412.6242 Cooks	959	1.7	2.1	4.6	1.9
G5 Occupations in food and beverage service	1,482	1.5	2.0	4.7	1.8
G51.645 Occupations in Food and Beverage Service	1,482	1.5	2.0	4.7	1.8
G511.6451 Maîtres d'hôtel and Hosts/Hostesses	134	1.6	2.0	4.6	1.8
G512.6452 Bartenders	202	1.5	2.0	4.6	1.8
G513.6453 Food and Beverage Servers	1,147	1.5	2.0	4.7	1.8
G6 Occupations in protective services	828	1.2	1.1	1.5	1.2
G61.626 Police Officers and Fire-fighters	379	1.1	1.0	0.9	1.1
G611.6261 Police Officers (Except Commissioned)	251	1.1	1.1	0.9	1.1
G612.6262 Fire-fighters	129	1.1	1.0	0.9	1.0
G62.646 Other Occupations in Protective Service	318	1.2	1.1	1.4	1.2
G621.6461 Sheriffs and Bailiffs	22	1.2	1.1	1.4	1.2
G622.6462 Correctional Service Officers	100	1.1	1.1	0.9	1.1
G623.6463 By-law Enforcement and Other Regulatory Officers n.e.c.	34	1.5	1.3	2.3	1.4
G624.6464 Other Ranks Armed Forces	119	1.0	1.0	0.9	1.0
G625.6465 Other Protective Service Occupations	41	1.6	1.3	3.9	1.5
G63.665 Security Guards and Related Occupations	131	1.5	1.5	3.5	1.5
G631.6651 Security Guards and Related Occupations	132	1.5	1.4	3.5	1.5
G7 Occupations in travel and accommodation including attendants in recreation and sport	570	2.1	2.1	3.0	2.1
G71.643 Occupations in Travel and Accommodation	340	2.3	2.4	3.6	2.4

New Caledonia College Region

Projected Annual Growth Rates in Occupational Demand

	Estimated Employment	Average Annual % Change			Avg Annual % Chg Over 4 Years
	<u>2005</u>	<u>2007/2005</u>	<u>2009/2007</u>	<u>2010/2009</u>	<u>2009/2005</u>
G711.6431 Travel Counsellors	17	1.3	1.6	3.3	1.5
G712.6432 Purser and Flight Attendants	89	3.0	2.7	2.8	2.9
G713.6433 Airline Sales and Service Agents	74	2.9	2.7	2.8	2.9
G714.6434 Ticket Agents, Cargo Service Representatives and Related Clerks (Except Airline)	21	3.4	2.6	3.0	3.1
G715.6435 Hotel Front Desk Clerks	142	1.5	2.0	4.8	1.8
G72.644 Tour and Recreational Guides and Casino Occupations	115	1.8	1.5	1.8	1.7
G721.6441 Tour and Travel Guides	27	1.9	1.8	2.5	1.9
G722.6442 Outdoor Sport and Recreational Guides	31	1.8	1.6	2.5	1.7
G723.6443 Casino Occupations	59	1.8	1.4	1.1	1.6
G73.667 Other Occupations in Travel, Accommodation, Amusement and Recreation	111	1.9	1.7	2.3	1.8
G731.6671 Operators and Attendants in Amusement, Recreation and Sport	69	1.6	1.3	1.4	1.5
G732.6672 Other Attendants in Accommodation and Travel	42	2.4	2.3	3.8	2.4
G8 Childcare and home support workers	1,399	2.4	2.3	3.5	2.4
G81.647 Childcare and Home Support Workers	1,398	2.4	2.3	3.5	2.4
G811.6471 Visiting Homemakers, Housekeepers & Related Occupations	480	3.4	3.5	5.0	3.6
G812.6472 Elementary and Secondary School Teacher Assistants	476	1.3	0.9	0.2	1.1
G814.6474 Babysitters, Nannies and Parents' Helpers	445	2.4	2.4	5.2	2.5
G9 Sales and service occupations n.e.c.	4,853	1.8	1.7	4.7	1.8
G91.627 Technical Occupations in Personal Service	367	1.6	1.5	5.3	1.6
G911.6271 Hairstylists and Barbers	352	1.6	1.5	5.3	1.6
G912.6272 Funeral Directors and Embalmers	15	1.6	1.5	5.4	1.6
G92.648 Other Occupations in Personal Service	203	1.6	1.4	5.1	1.5
G921.6481 Image, Social and Other Personal Consultants	14	1.7	1.3	5.1	1.5
G922.6482 Estheticians, Electrologists and Related Occupations	116	1.6	1.4	5.3	1.5
G923.6483 Pet Groomers and Animal Care Workers	64	1.5	1.4	4.8	1.5
G924.6484 Other Personal Service Occupations	-	-	-	-	-
G93.666 Cleaners	1,224	1.9	2.0	3.4	2.0

New Caledonia College Region

Projected Annual Growth Rates in Occupational Demand

	Estimated Employment	Average Annual % Change			Avg Annual % Chg Over 4 Years
	<u>2005</u>	<u>2007/2005</u>	<u>2009/2007</u>	<u>2010/2009</u>	<u>2009/2005</u>
G931.6661 Light Duty Cleaners	491	2.1	2.4	4.5	2.3
G932.6662 Specialized Cleaners	120	1.9	2.0	4.0	2.0
G933.6663 Janitors, Caretakers and Building Superintendents	611	1.7	1.7	2.3	1.7
G94.625 Butchers and Bakers	305	2.0	1.1	5.1	1.6
G941.6251 Butchers and Meat Cutters - Retail and Wholesale	126	1.8	0.9	5.8	1.4
G942.6252 Bakers	179	2.1	1.3	4.6	1.7
G96.664 Food Counter Attendants, Kitchen Helpers and Related Occupations	1,466	1.7	2.1	4.7	2.0
G961.6641 Food Counter Attendants, Kitchen Helpers and Related Occupations	1,464	1.7	2.1	4.7	2.0
G97.662 Other Sales and Related Occupations	1,091	1.8	1.0	5.7	1.4
G971.6621 Service Station Attendants	171	1.8	0.9	5.9	1.3
G972.6622 Grocery Clerks and Store Shelf Stockers	676	1.8	0.9	5.9	1.4
G973.6623 Other Elemental Sales Occupations	242	1.7	1.1	5.0	1.4
G98.668 Other Elemental Service Occupations	196	1.9	1.9	4.7	1.9
G981.6681 Dry Cleaning and Laundry Occupations	93	2.2	2.2	5.1	2.3
G982.6682 Ironing, Pressing and Finishing Occupations	18	1.7	1.7	5.6	1.7
G983.6683 Other Elemental Service Occupations	85	1.7	1.5	4.0	1.6
H Trades, transport and equipment operators and related occupations	13,004	2.1	3.7	0.3	3.0
H0 Contractors and supervisors in trades and transportation	682	2.9	5.3	-1.7	4.3
H01.721 Contractors and Supervisors, Trades and Related Workers	590	2.8	5.8	-2.3	4.5
H011.7211 Supervisors, Machinists and Related Occupations	-	-	-	-	-
H012.7212 Contractors and Supervisors, Electrical Trades and Telecommunications Occupations	66	2.6	5.5	-2.2	4.2
H013.7213 Contractors and Supervisors, Pipefitting Trades	29	3.3	6.9	-3.8	5.3
H014.7214 Contractors and Supervisors, Metal Forming, Shaping and Erecting Trades	31	2.6	4.8	-0.3	3.8
H015.7215 Contractors and Supervisors, Carpentry Trades	86	3.2	7.4	-4.4	5.6
H016.7216 Contractors and Supervisors, Mechanic Trades	80	1.9	2.1	2.6	2.0

New Caledonia College Region

Projected Annual Growth Rates in Occupational Demand

	Estimated Employment	Average Annual % Change			Avg Annual % Chg Over 4 Years
	<u>2005</u>	<u>2007/2005</u>	<u>2009/2007</u>	<u>2010/2009</u>	<u>2009/2005</u>
H017.7217 Contractors and Supervisors, Heavy Construction Equipment Crews	153	3.1	6.0	-2.9	4.7
H018.7218 Supervisors, Printing and Related Occupations	16	1.3	1.5	5.5	1.4
H019.7219 Contractors and Supervisors, Other Construction Trades, Installers, Repairers and Servicers	119	3.3	7.7	-4.9	5.7
H02.722 Supervisors, Railway and Motor Transportation Occupations	91	3.5	2.4	2.7	3.0
H021.7221 Supervisors, Railway Transport Operations	60	4.5	2.8	2.8	3.8
H022.7222 Supervisors, Motor Transport & Other Ground Transit Operators	32	1.3	1.7	2.3	1.5
H1 Construction trades	2,531	3.1	7.1	-4.1	5.3
H11.725 Plumbers, Pipefitters and Gas Fitters	404	3.1	6.3	-3.5	4.9
H111.7251 Plumbers	228	3.2	7.5	-4.6	5.6
H112.7252 Steamfitters, Pipefitters and Sprinkler System Installers	136	2.9	4.5	-1.8	3.9
H113.7253 Gas Fitters	41	2.7	5.7	-2.4	4.3
H12.727 Carpenters and Cabinetmakers	1,083	2.9	6.8	-3.7	5.1
H121.7271 Carpenters	999	3.1	7.1	-4.1	5.3
H122.7272 Cabinetmakers	84	1.7	3.7	2.5	2.7
H13.728 Masonry and Plastering Trades	382	3.4	8.1	-5.2	6.0
H131.7281 Bricklayers	63	3.3	7.9	-5.0	5.8
H132.7282 Concrete Finishers	61	3.3	7.8	-4.9	5.8
H133.7283 Tilesetters	52	3.4	8.2	-5.3	6.1
H134.7284 Plasterers, Drywall Installers and Finishers and Lathers	205	3.4	8.2	-5.4	6.1
H14.729 Other Construction Trades	662	3.2	7.5	-4.5	5.6
H141.7291 Roofers and Shinglers	132	3.3	7.9	-5.0	5.8
H142.7292 Glaziers	61	2.7	5.8	-1.8	4.4
H143.7293 Insulators	43	3.2	7.2	-4.5	5.5
H144.7294 Painters and Decorators	318	3.2	7.6	-4.7	5.7
H145.7295 Floor Covering Installers	112	3.2	7.5	-4.5	5.6
H2 Stationary engineers, power station operators and electrical trades and telecommunications occupations	987	2.3	4.0	-0.7	3.3

New Caledonia College Region

Projected Annual Growth Rates in Occupational Demand

	Estimated Employment	Average Annual % Change			Avg Annual % Chg Over 4 Years
	<u>2005</u>	<u>2007/2005</u>	<u>2009/2007</u>	<u>2010/2009</u>	<u>2009/2005</u>
H21.724 Electrical Trades and Telecommunications Occupations	861	2.4	4.4	-1.1	3.5
H211.7241 Electricians (Except Industrial and Power System)	376	3.0	6.8	-3.9	5.1
H212.7242 Industrial Electricians	265	1.8	2.3	2.2	2.1
H213.7243 Power System Electricians	17	2.1	3.0	0.1	2.6
H214.7244 Electrical Power Line and Cable Workers	36	2.2	3.4	-0.1	2.9
H215.7245 Telecommunications Line and Cable Workers	49	2.2	3.2	-0.6	2.8
H216.7246 Telecommunications Installation and Repair Workers	92	1.8	1.9	1.1	1.9
H217.7247 Cable Television Service and Maintenance Technicians	27	2.2	3.0	-0.4	2.7
H22.735 Stationary Engineers and Power Station and System Operators	125	1.9	1.4	2.1	1.7
H221.7351 Stationary Engineers and Auxiliary Equipment Operators	108	1.9	1.4	2.0	1.7
H222.7352 Power Systems and Power Station Operators	14	2.2	1.9	2.5	2.1
H3 Machinists, metal forming, shaping and erecting occupations	667	2.1	3.4	1.6	2.8
H31.723 Machinists and Related Occupations	121	1.4	1.7	5.0	1.6
H311.7231 Machinists and Machining and Tooling Inspectors	110	1.4	1.7	4.9	1.6
H312.7232 Tool and Die Makers	-	-	-	-	-
H32.726 Metal Forming, Shaping and Erecting Trades	547	2.2	3.8	0.9	3.1
H321.7261 Sheet Metal Workers	82	2.7	6.1	-2.3	4.6
H322.7262 Boilermakers	16	2.1	3.6	1.1	2.9
H323.7263 Structural Metal and Platework Fabricators and Fitters	50	1.4	2.2	4.8	1.8
H324.7264 Ironworkers	49	3.0	7.0	-3.5	5.2
H325.7266 Blacksmiths and Die Setters	-	-	-	-	-
H326.7265 Welders and Related Machine Operators	349	2.0	3.0	1.7	2.6
H4 Mechanics	2,132	1.7	1.7	3.4	1.8
H41.731 Machinery and Transportation Equipment Mechanics (Except Motor Vehicle)	1,330	1.8	1.9	2.6	1.9
H411.7311 Construction Millwrights and Industrial Mechanics (Except Textile)	640	1.2	1.4	3.5	1.3
H412.7312 Heavy-Duty Equipment Mechanics	421	1.8	1.5	2.2	1.7
H413.7313 Refrigeration and Air Conditioning Mechanics	57	2.7	6.0	-2.6	4.5
H414.7314 Railway Carmen/women	85	4.5	2.8	2.8	3.7

New Caledonia College Region

Projected Annual Growth Rates in Occupational Demand

	Estimated Employment	Average Annual % Change			Avg Annual % Chg Over 4 Years
	<u>2005</u>	<u>2007/2005</u>	<u>2009/2007</u>	<u>2010/2009</u>	<u>2009/2005</u>
H415.7315 Aircraft Mechanics and Aircraft Inspectors	81	2.6	2.4	3.0	2.5
H416.7316 Machine Fitters	19	1.3	1.5	4.6	1.4
H417.7317 Textile Machinery Mechanics and Repairers	0	-	-	-	-
H418.7318 Elevator Constructors and Mechanics	26	3.4	8.0	-5.1	6.0
H42.732 Automotive service technicians	694	1.6	1.3	4.9	1.5
H421.7321 Automotive Service Technicians, Truck Mechanics and Mechanical Repairers	532	1.6	1.3	4.8	1.5
H422.7322 Motor Vehicle Body Repairers	161	1.6	1.4	5.3	1.5
H43.733 Other Mechanics	108	2.1	1.9	4.0	2.0
H431.7331 Oil and Solid Fuel Heating Mechanics	-	-	-	-	-
H432.7332 Electric Appliance Servicers and Repairers	47	1.7	1.8	4.4	1.8
H433.7333 Electrical Mechanics	15	1.5	2.1	4.4	1.8
H434.7334 Motorcycle and Other Related Mechanics	11	1.7	1.2	5.4	1.5
H435.7335 Other Small Engine and Equipment Mechanics	27	1.5	1.4	4.6	1.5
H5 Other trades n.e.c.	650	1.6	2.4	2.9	2.1
H51.734 Upholsterers, Tailors, Shoe Repairers, Jewellers and Related Occupations	121	1.5	1.5	5.7	1.5
H511.7341 Upholsterers	23	1.6	1.5	5.6	1.6
H512.7342 Tailors, Dressmakers, Furriers and Milliners	74	1.5	1.6	5.9	1.6
H513.7343 Shoe Repairers and Shoemakers	-	-	-	-	-
H514.7344 Jewellers, Watch Repairers and Related Occupations	16	1.6	1.2	5.6	1.4
H52.738 Printing Press Operators, Commercial Divers and Other Trades and Related Occupations n.e.c.	229	0.8	1.2	4.6	1.0
H521.7381 Printing Press Operators	55	1.4	1.6	4.4	1.6
H522.7382 Commercial Divers	-	-	-	-	-
H523.7383 Other Trades and Related Occupations	170	0.6	1.1	4.7	0.8
H53.744 Other installers, repairers and servicers	299	2.2	3.7	0.7	3.1
H531.7441 Residential and Commercial Installers and Servicers	130	2.9	6.7	-3.4	5.0
H532.7442 Waterworks and Gas Maintenance Workers	21	1.9	2.0	1.2	2.0
H533.7443 Automotive Mechanical Installers and Servicers	65	1.7	1.2	4.9	1.4

New Caledonia College Region

Projected Annual Growth Rates in Occupational Demand

	Estimated Employment	Average Annual % Change			Avg Annual % Chg Over 4 Years
	<u>2005</u>	<u>2007/2005</u>	<u>2009/2007</u>	<u>2010/2009</u>	<u>2009/2005</u>
H534.7444 Pest Controllers and Fumigators	-	-	-	-	-
H535.7445 Other Repairers and Servicers	76	1.6	1.4	4.8	1.5
H6 Heavy equipment and crane operators including drillers	732	2.5	4.4	-1.3	3.6
H61.742 Heavy Equipment Operators	614	2.6	4.4	-1.3	3.6
H611.7421 Heavy Equipment Operators (Except Crane)	579	2.7	4.4	-1.4	3.7
H612.7422 Public Works Maintenance Equipment Operators	38	2.1	3.1	0.0	2.6
H62.737 Crane Operators, Drillers and Blasters	116	2.5	4.4	-1.2	3.5
H621.7371 Crane Operators	71	2.2	3.9	-0.4	3.1
H622.7372 Drillers and Blasters - Surface Mining Quarrying and Construction	38	3.0	4.5	-1.7	3.9
H623.7373 Water Well Drillers	-	-	-	-	-
H7 Transportation equipment operators and related workers, excluding labourers	2,872	1.6	1.8	2.3	1.7
H71.741 Motor Vehicle and Transit Drivers	2,394	1.1	1.6	2.3	1.4
H711.7411 Truck Drivers	1,757	0.8	1.5	1.9	1.2
H712.7412 Bus Drivers and Subway and Other Transit Operators	207	2.3	2.2	2.4	2.3
H713.7413 Taxi and Limousine Drivers and Chauffeurs	106	2.9	2.7	2.8	2.9
H714.7414 Delivery and Courier Service Drivers	322	1.3	1.5	4.0	1.4
H72.736 Train Crew Operating Occupations	252	4.4	2.7	2.8	3.7
H721.7361 Railway and Yard Locomotive Engineers	128	4.4	2.7	2.7	3.7
H722.7362 Railway Conductors and Brakemen/women	124	4.5	2.8	2.8	3.7
H73.743 Other Transport Equipment Operators and Related Workers	224	3.4	2.3	2.6	2.9
H731.7431 Railway Yard Workers	27	4.5	2.8	2.8	3.8
H732.7432 Railway Track Maintenance Workers	81	4.4	2.7	2.7	3.7
H733.7433 Deck Crew Water Transport	27	1.9	1.5	2.4	1.7
H734.7434 Engine Room Crew, Water Transport	-	-	-	-	-
H735.7435 Lock and Cable Ferry Operators and Related Occupations	12	3.7	3.3	1.9	3.7
H736.7436 Boat Operators	31	1.6	0.7	1.7	1.2
H737.7437 Air Transport Ramp Attendants	45	3.7	2.5	2.7	3.2

New Caledonia College Region

Projected Annual Growth Rates in Occupational Demand

	Estimated Employment	Average Annual % Change			Avg Annual % Chg Over 4 Years
	<u>2005</u>	<u>2007/2005</u>	<u>2009/2007</u>	<u>2010/2009</u>	<u>2009/2005</u>
H8 Trades helpers, construction and transportation labourers and related occupations	1,749	1.9	3.4	0.7	2.7
H81.745 Longshore Workers and Material Handlers	1,011	1.2	1.3	3.8	1.2
H811.7451 Longshore Workers	81	2.8	2.2	2.9	2.6
H812.7452 Material Handlers	931	1.1	1.2	3.9	1.1
H82.761 Trades Helpers and Labourers	630	3.0	6.8	-3.8	5.1
H821.7611 Construction Trades Helpers and Labourers	580	3.2	7.2	-4.3	5.4
H822.7612 Other Trades Helpers and Labourers	49	1.6	2.4	2.0	2.0
H83.762 Public Works and Other Labourers n.e.c.	112	2.3	2.6	1.1	2.5
H831.7621 Public Works and Maintenance Labourers	63	1.8	2.8	0.2	2.3
H832.7622 Railway and Motor Transport Labourers	47	2.9	2.5	2.5	2.8
I Occupations unique to primary industry	3,783	1.4	0.4	1.9	0.9
I0 Occupations unique to agriculture, excluding labourers	1,381	1.0	0.5	3.9	0.7
I01.825 Contractors, Operators and Supervisors in Agriculture, Horticulture and Aquaculture	753	1.0	0.5	3.9	0.7
I011.8251 Farmers and Farm Managers	564	0.9	0.4	4.3	0.6
I012.8252 Agricultural and Related Service Contractors and Managers	-	-	-	-	-
I013.8253 Farm Supervisors and Specialized Livestock Workers	45	1.1	0.7	3.6	0.9
I014.8254 Nursery and Greenhouse Operators and Managers	53	1.2	0.3	3.1	0.7
I015.8255 Landscaping & Grounds Maintenance Contractors & Managers	18	2.1	2.9	-0.3	2.6
I016.8256 Supervisors, Landscape and Horticulture	36	1.4	1.1	1.8	1.3
I017.8257 Aquaculture Operators and Managers	25	0.9	0.5	3.7	0.7
I02.843 Agriculture and Horticulture Workers	628	1.0	0.4	4.0	0.7
I021.8431 General Farm Workers	414	0.9	0.4	4.2	0.7
I022.8432 Nursery and Greenhouse Workers	215	1.0	0.3	3.7	0.7
I1 Occupations unique to forestry operations, mining, oil and gas extraction and fishing excluding labourers	1,428	1.8	0.2	0.5	1.0
I11.821 Supervisors, Logging and Forestry	239	1.4	0.1	0.9	0.7
I111.8211 Supervisors, Logging and Forestry	237	1.4	0.1	0.9	0.7
I12.822 Supervisors, Mining, Oil and Gas	42	3.9	3.7	3.7	3.9

New Caledonia College Region

Projected Annual Growth Rates in Occupational Demand

	Estimated Employment	Average Annual % Change			Avg Annual % Chg Over 4 Years
	<u>2005</u>	<u>2007/2005</u>	<u>2009/2007</u>	<u>2010/2009</u>	<u>2009/2005</u>
I121.8221 Supervisors, Mining and Quarrying	26	3.8	3.8	5.0	4.0
I122.8222 Supervisors, Oil and Gas Drilling and Service	15	4.3	3.7	1.4	4.1
I13.823 Underground Miners, Oil and Gas Drillers and Related Workers	49	4.5	3.4	3.8	4.1
I131.8231 Underground Production and Development Miners	35	3.8	3.6	4.6	3.8
I132.8232 Oil and Gas Well Drillers, Servicers, Testers and Related Workers	14	6.6	3.2	1.8	5.1
I14.841 Mine Service Workers and Operators in Oil and Gas Drilling	30	5.1	3.5	1.8	4.4
I141.8411 Underground Mine Service and Support Workers	14	3.4	3.6	3.3	3.6
I142.8412 Oil and Gas Well Drilling Workers and Services Operators	16	6.5	3.3	0.9	5.1
I15.824 Logging Machinery Operators	413	1.5	0.0	0.5	0.8
I151.8241 Logging Machinery Operators	412	1.5	0.0	0.5	0.8
I16.842 Logging and Forestry Workers	639	1.7	-0.2	-0.4	0.7
I161.8421 Chain-saw and Skidder Operators	426	1.7	-0.2	-0.4	0.7
I162.8422 Silviculture and Forestry Workers	214	1.7	-0.2	-0.3	0.7
I17.826 Fishing Vessel Masters and Skippers and Fishermen/women	14	1.6	1.2	6.0	1.4
I171.8261 Fishing Masters and Officers	-	-	-	-	-
I172.8262 Fishing Vessel Skippers and Fishermen/women	13	1.6	1.2	6.0	1.4
I18.844 Other Fishing and Trapping Occupations	-	-	-	-	-
I181.8441 Fishing Vessel Deckhands	-	-	-	-	-
I182.8442 Trappers and Hunters	0	-	-	-	-
I2 Primary production labourers	976	1.6	0.5	1.1	1.0
I21.861 Primary Production Labourers	975	1.6	0.5	1.1	1.0
I211.8611 Harvesting Labourers	66	0.9	0.3	4.0	0.6
I212.8612 Landscaping and Grounds Maintenance Labourers	190	1.6	1.7	1.6	1.7
I213.8613 Aquaculture and Marine Harvest Labourers	29	0.9	0.5	4.3	0.7
I214.8614 Mine Labourers	20	3.7	3.7	4.0	3.8
I215.8615 Oil and Gas Drilling, Servicing and Related Labourers	27	3.8	3.6	1.8	3.8
I216.8616 Logging and Forestry Labourers	644	1.5	-0.1	0.3	0.7
J Occupations unique to processing, manufacturing and utilities	5,865	1.0	1.1	4.3	1.1
J0 Supervisors in manufacturing	507	1.3	1.1	4.0	1.3

New Caledonia College Region

Projected Annual Growth Rates in Occupational Demand

	Estimated Employment	Average Annual % Change			Avg Annual % Chg Over 4 Years
	<u>2005</u>	<u>2007/2005</u>	<u>2009/2007</u>	<u>2010/2009</u>	<u>2009/2005</u>
J01.921 Supervisors, Processing Occupations	450	1.4	1.0	3.9	1.2
J011.9211 Supervisors, Mineral and Metal Processing	12	1.8	3.2	3.4	2.6
J012.9212 Supervisors, Petroleum, Gas and Chemical Processing and Utilities	18	12.8	1.4	0.8	7.3
J013.9213 Supervisors, Food, Beverage and Tobacco Processing	18	2.5	1.3	2.5	2.0
J014.9214 Supervisors, Plastic and Rubber Products Manufacturing	-	-	-	-	-
J015.9215 Supervisors, Forest Products Processing	395	0.8	0.9	4.2	0.8
J016.9216 Supervisors, Textile Processing	-	-	-	-	-
J02.922 Supervisors, Assembly and Fabrication	56	1.2	1.8	4.8	1.5
J021.9221 Supervisors, Motor Vehicle Assembling	-	-	-	-	-
J022.9222 Supervisors, Electronics Manufacturing	-	-	-	-	-
J023.9223 Supervisors, Electrical Products Manufacturing	-	-	-	-	-
J024.9224 Supervisors, Furniture and Fixtures Manufacturing	-	-	-	-	-
J025.9225 Supervisors, Fabric, Fur and Leather Products Manufacturing	-	-	-	-	-
J026.9226 Supervisors, Other Mechanical and Metal Products Manufacturing	11	1.6	2.8	4.2	2.2
J027.9227 Supervisors, Other Products Manufacturing and Assembly	17	1.0	1.9	4.1	1.5
J1 Machine operators in manufacturing	2,584	1.1	1.1	4.2	1.1
J11.923 Central Control and Process Operators in Manufacturing and Processing	147	5.0	1.4	0.5	3.2
J111.9231 Central Control & Process Operators Mineral & Metal Processing	-	-	-	-	-
J112.9232 Petroleum, Gas and Chemical Process Operators	26	18.0	1.7	-0.6	10.2
J113.9233 Pulping Control Operators	40	2.3	1.3	0.4	1.8
J114.9234 Papermaking and Coating Control Operators	67	2.2	1.2	0.7	1.7
J12.941 Machine Operators and Related Workers in Metal and Mineral Products Processing	65	2.0	3.1	3.4	2.6
J121.9411 Machine Operators, Mineral and Metal Processing	20	2.4	3.0	3.8	2.7
J122.9412 Foundry Workers	-	-	-	-	-

New Caledonia College Region

Projected Annual Growth Rates in Occupational Demand

	Estimated Employment	Average Annual % Change			Avg Annual % Chg Over 4 Years
	<u>2005</u>	<u>2007/2005</u>	<u>2009/2007</u>	<u>2010/2009</u>	<u>2009/2005</u>
J123.9413 Glass Forming and Finishing Machine Operators and Glass Cutters	13	1.1	1.8	6.2	1.5
J124.9414 Concrete, Clay and Stone Forming Operators	24	2.3	4.4	1.7	3.5
J125.9415 Inspectors and Testers, Mineral and Metal Processing	-	-	-	-	-
J13.942 Machine Operators and Related Workers in Chemical, Plastic and Rubber Processing	40	1.6	1.5	2.7	1.6
J131.9421 Chemical Plant Machine Operators	-	-	-	-	-
J132.9422 Plastics Processing Machine Operators	-	-	-	-	-
J133.9423 Rubber Processing Machine Operators and Related Workers	-	-	-	-	-
J134.9424 Water and Waste Plant Operators	22	1.6	1.5	2.1	1.6
J14.943 Machine Operators and Related Workers in Pulp and Paper Production and Wood Processing	1,882	0.7	0.9	4.4	0.8
J141.9431 Sawmill Machine Operators	918	0.4	0.8	5.1	0.6
J142.9432 Pulp Mill Machine Operators	119	2.2	1.2	0.6	1.8
J143.9433 Papermaking and Finishing Machine Operators	74	2.1	1.3	0.9	1.7
J144.9434 Other Wood Processing Machine Operators	210	0.6	0.9	4.6	0.7
J145.9435 Paper Converting Machine Operators	51	2.1	1.2	0.9	1.7
J146.9436 Lumber Graders and Other Wood Processing Inspectors and Graders	508	0.4	0.8	4.9	0.6
J15.944 Machine Operators and Related Workers in Textile Processing	19	1.5	0.9	3.9	1.2
J151.9441 Textile Fibre and Yarn Preparation Machine Operators	-	-	-	-	-
J152.9442 Weavers, Knitters and Other Fabric-Making Occupations	-	-	-	-	-
J153.9443 Textile Dyeing and Finishing Machine Operators	-	-	-	-	-
J154.9444 Textile Inspectors, Graders and Samplers	-	-	-	-	-
J16.945 Machine Operators and Related Workers in Fabric, Fur and Leather Products Manufacturing	103	1.3	1.6	6.1	1.4
J161.9451 Sewing Machine Operators	90	1.3	1.6	6.1	1.4
J162.9452 Fabric, Fur and Leather Cutters	-	-	-	-	-
J163.9453 Hide and Pelt Processing Workers	-	-	-	-	-

New Caledonia College Region

Projected Annual Growth Rates in Occupational Demand

	Estimated Employment	Average Annual % Change			Avg Annual % Chg Over 4 Years
	<u>2005</u>	<u>2007/2005</u>	<u>2009/2007</u>	<u>2010/2009</u>	<u>2009/2005</u>
J164.9454 Inspectors and Testers, Fabric, Fur and Leather Products Manufacturing	-	-	-	-	-
J17.946 Machine Operators and Related Workers in Food, Beverage and Tobacco Processing	77	3.0	1.4	2.3	2.2
J171.9461 Process Control and Machine Operators, Food and Beverage Processing	38	3.0	1.4	2.3	2.3
J172.9462 Industrial Butchers and Meat Cutters, Poultry Preparers and Related Workers	21	3.1	1.5	2.0	2.3
J173.9463 Fish Plant Workers	-	-	-	-	-
J174.9464 Tobacco Processing Machine Operators	0	-	-	-	-
J175.9465 Testers and Graders, Food and Beverage Processing	-	-	-	-	-
J18.947 Printing Machine Operators and Related Occupations	120	1.5	1.4	5.1	1.5
J181.9471 Printing Machine Operators	29	1.3	1.5	5.2	1.4
J182.9472 Camera, Platemaking and Other Pre-Press Occupations	11	1.3	1.6	5.0	1.5
J183.9473 Binding and Finishing Machine Operators	17	1.4	1.8	5.3	1.6
J184.9474 Photographic and Film Processors	61	1.7	1.3	5.2	1.5
J19.951 Machining, Metalworking, Woodworking and Related Machine Operators	132	0.8	1.3	5.0	1.1
J191.9511 Machining Tool Operators	16	1.5	1.8	4.7	1.7
J192.9512 Forging Machine Operators	-	-	-	-	-
J193.9513 Woodworking Machine Operators	86	0.6	1.2	5.0	0.9
J194.9514 Metalworking Machine Operators	12	1.1	1.9	5.7	1.5
J196.9516 Other Metal Products Machine Operators.	-	-	-	-	-
J197.9517 Other Products Machine Operators	11	1.0	1.3	5.7	1.2
J2 Assemblers in manufacturing	452	1.3	1.8	4.7	1.6
J21.948 Mechanical, Electrical and Electronics Assemblers	116	1.4	1.8	5.3	1.6
J211.9481 Aircraft Assemblers and Aircraft Assembly Inspectors	-	-	-	-	-
J212.9482 Motor Vehicle Assemblers, Inspectors and Testers	18	1.5	1.4	5.3	1.5
J213.9483 Electronics Assemblers, Fabricators, Inspectors and Testers	33	1.2	1.8	6.2	1.5

New Caledonia College Region

Projected Annual Growth Rates in Occupational Demand

	Estimated Employment	Average Annual % Change			Avg Annual % Chg Over 4 Years
	<u>2005</u>	<u>2007/2005</u>	<u>2009/2007</u>	<u>2010/2009</u>	<u>2009/2005</u>
J214.9484 Assemblers and Inspectors, Electrical Appliance, Apparatus and Equipment Manufacturing	13	1.3	1.8	6.4	1.6
J215.9485 Assemblers, Fabricators and Inspectors, Industrial Electrical Motors and Transformers	-	-	-	-	-
J216.9486 Mechanical Assemblers and Inspectors	30	1.4	1.6	4.2	1.5
J217.9487 Machine Operators and Inspectors, Electrical Apparatus Manufacturing	-	-	-	-	-
J22.949 Other Assembly and Related Occupations	336	1.3	1.9	4.5	1.6
J221.9491 Boat Assemblers and Inspectors	30	1.3	1.9	6.2	1.7
J222.9492 Furniture and Fixture Assemblers and Inspectors	74	1.4	2.0	5.1	1.7
J223.9493 Other Wood Products Assemblers and Inspectors	126	1.0	1.3	4.2	1.2
J224.9494 Furniture Finishers and Refinishers	21	1.4	2.0	4.8	1.8
J225.9495 Plastic Products Assemblers, Finishers and Inspectors	-	-	-	-	-
J226.9496 Painters and Coaters - Industrial	57	1.7	3.0	2.1	2.4
J227.9497 Plating, Metal Spraying and Related Operators	-	-	-	-	-
J228.9498 Other Assemblers and Inspectors	21	1.2	1.8	5.7	1.5
J3 Labourers in processing, manufacturing and utilities	2,323	0.8	1.0	4.5	0.9
J31.961 Labourers in Processing, Manufacturing and Utilities	2,324	0.8	1.0	4.5	0.9
J311.9611 Labourers in Mineral and Metal Processing	23	1.4	2.2	3.7	1.8
J312.9612 Labourers in Metal Fabrication	29	1.5	2.6	4.5	2.0
J313.9613 Labourers in Chemical Products Processing and Utilities	-	-	-	-	-
J314.9614 Labourers in Wood Pulp and Paper Processing	2,000	0.6	0.9	4.6	0.7
J315.9615 Labourers in Rubber and Plastic Products Manufacturing	-	-	-	-	-
J316.9616 Labourers in Textile Processing	-	-	-	-	-
J317.9617 Labourers in Food Beverage and Tobacco Processing	128	2.3	1.2	3.1	1.8
J318.9618 Labourers in Fish Processing	-	-	-	-	-
J319.9619 Other Labourers in Processing, Manufacturing and Utilities	116	1.2	1.5	4.7	1.3

- suppressed due to small numbers