



# Health IdM Overview

## Public Sector Identity Management Forum

**Jamus Spink**   **Imraan Kassam**

Vancouver Coastal Health  
Authority

Provincial Health Services  
Authority



# Agenda

- BC Health Care Overview
- Why do we care about IdM?  
*a healthcare perspective*
- Current Activities
  - MoH iEHR Working Group
  - HA Internal Activities
  - IHA - PHSA Community of Practice
- Questions



# BC Health Overview



# BC Health Care Overview



- **6 Health Authorities**
  - 5 Geographic distribution
  - 1 Provincial scope – Provincial Health Services Authority
- **Approx. 100,000 Health Care Workers**
  - 29,000 Nurses
  - 14,000 Allied Health Professionals
  - 9,000 Physicians
  - 15,000 Community Care
  - 44,000 Support Services





# Why do we care about IdM? a health care perspective

# What is IdM? - The Confusion





# IdM Defined ... simply

Identity Management is the **process** and **technology** used to manage **digital identities** as well as the **policies** that govern how the identities can be used to **access IT resources**



# Health Care Challenges

1. **Internal Identity Management**
  - Complex mass of non-integrated, unique applications
  - Ill defined provisioning/de-provisioning processes
  - Generic IDs
2. **Information Sharing between Health Authorities**
  - Lack of application standards
  - 60% of information that makes up BCCA patient chart comes from another Health Authority
3. **Primary Care Physicians Offices**
  - Needs access to information from many different Health Authorities
4. **Broader Public Sector (UBC Med & MCF)**
  - Medical students rotations
5. **The Public**
  - Viewing your lab results from home





# Electronic Health Record

- One of the main provincial focuses is the development of the integrated Electronic Health Record (iEHR).
- The iEHR provides each person with a secure and private lifetime record of their key health history and care within the health system.
- The record is available electronically to authorized health care providers and the individual anywhere, anytime.
- iEHR depends on a Trusted Model for User Authentication.



# Identity Management for BC Healthcare

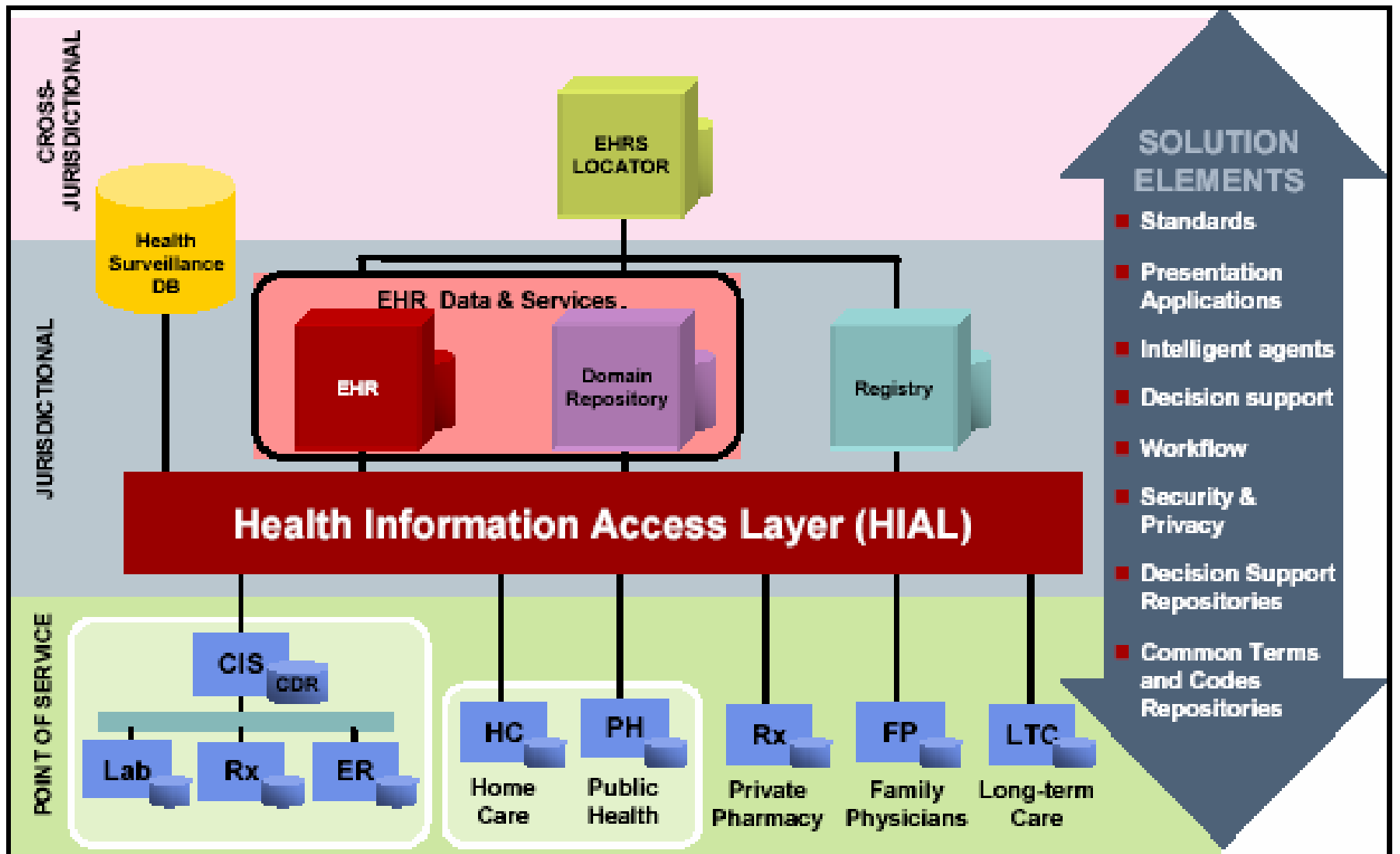


# Current Health IdM Activities

- BC Ministry of Health iEHR Working Group
  - Development of User Trust Model
  
- Internal Health Authority Architectural Redesign
  - Build up of Extranet facing services
  - Internal account provisioning clean up, many HAs deploying MIIS
  
- Cross Health Authority Federated IdM Project
  - Community of Practice (COP) SharePoint site between Interior Health Authority and Provincial Health Services Authority.



# iEHR Blueprint

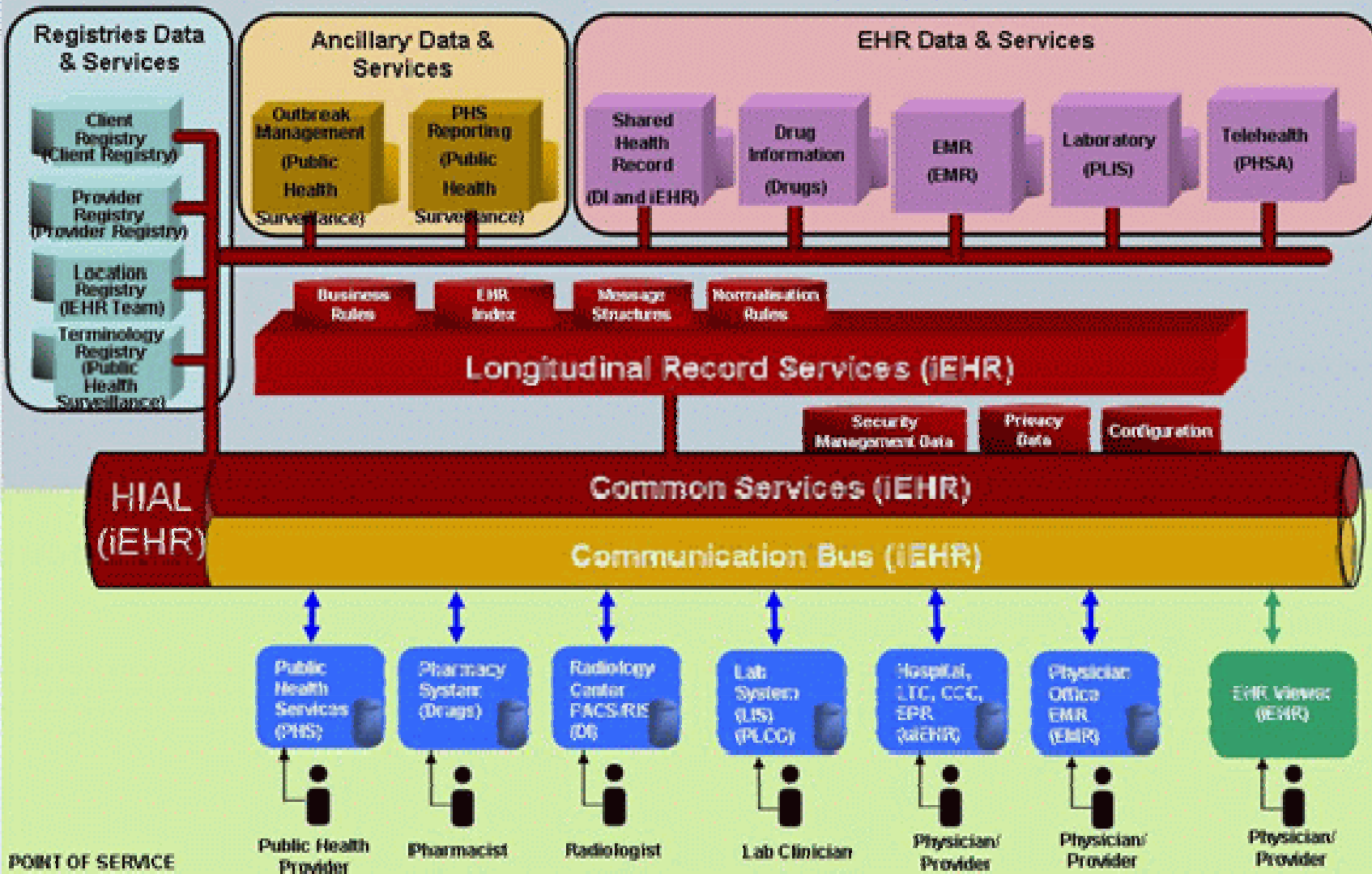






# iEHR Infostructure

## JURISDICTIONAL INFOSTRUCTURE





# iEHR Working Group

- The iEHR needs to ensure that all users of EHR services have verified identities, are authenticated during each session, and are authorised to access data and services.
- 3 Trust Models:
  1. Centralized Administration of all Users.
  2. Organizational Trusted User Management Model (OTUM) – the application connected to the EHR is trusted.
  3. If an Application is not trusted, then the EHRi Trusted User Management model (ETUM) must be followed.



# EHR Trusted User Management

- ETUM Recommendation
  - Better accommodates users that exist outside of Health Authorities.
  - Authentication is not application dependent.
  - Federation can be used to give HA users simplified sign-on.
  - Scalable to as many organizations as needed with as many applications within those organizations as needed.
- Health Authorities will act as a 'local registration authority' to attest to identity of a prospective user



# iEHR Next Steps

- Currently in Joint Solutions Request for Proposal (JSRFP), with Provincial Lab Information System
  - 1) Four vendors selected based upon Capacity/Commitment/Capability: Mar 31<sup>st</sup>
  - 2) Two vendors to be selected based upon Solution Concept: May 2006
  - 3) Joint Solutions Design: May - Sept 2006  
IdM design/approach defined with vendor
  - 4) Contract Completion: Dec 2006
  - 5) Design/Development: Throughout 2007
  - 6) Implementation: 2008 onwards





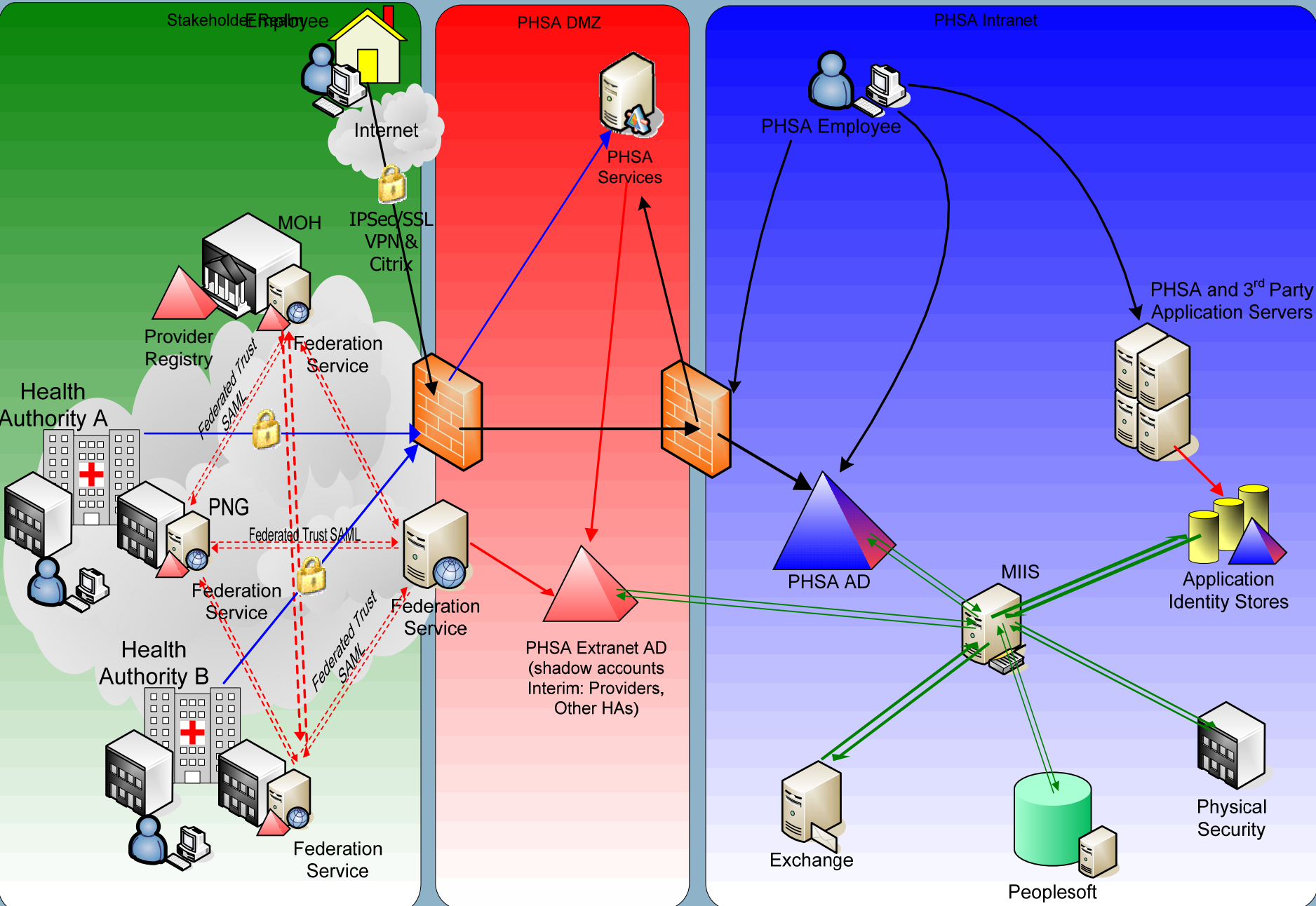
# Internal IdM Activities

## ■ PHSA

- Developed IdM Architecture for Health in 2005
- Deployed 2 Extranet AD environments and MIIS (Internet & PNG) in July 2005
- Currently working on PeopleSoft integration

## ■ VCHA

- Currently deploying MIIS and PSync to Support Extranet Deployment (Internet)



PHSA Identity Management Solution Concept



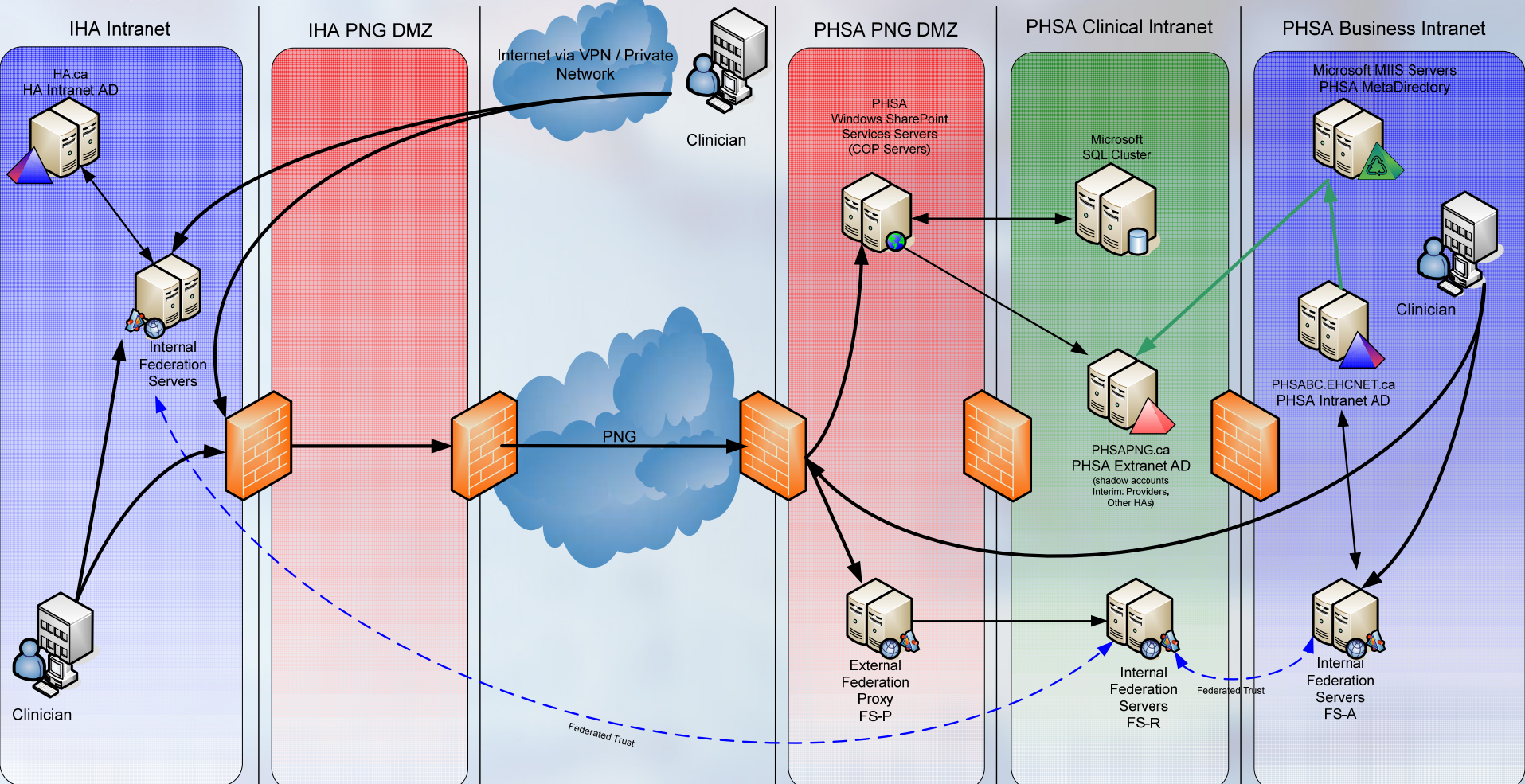
# Federated Authorities Project

- SharePoint Team Site (Communities of Practice – CoP) for information exchange regarding cancer patients between IHA and PHSA.
- Objectives:
  - Improve communication between clinicians
  - Prove FIdM (ADFS/WS-Federation)
- Starting with 30 users
- Hundreds of requests for CoP sites with cross authority user membership.

# Federated Authorities Project Architecture Model



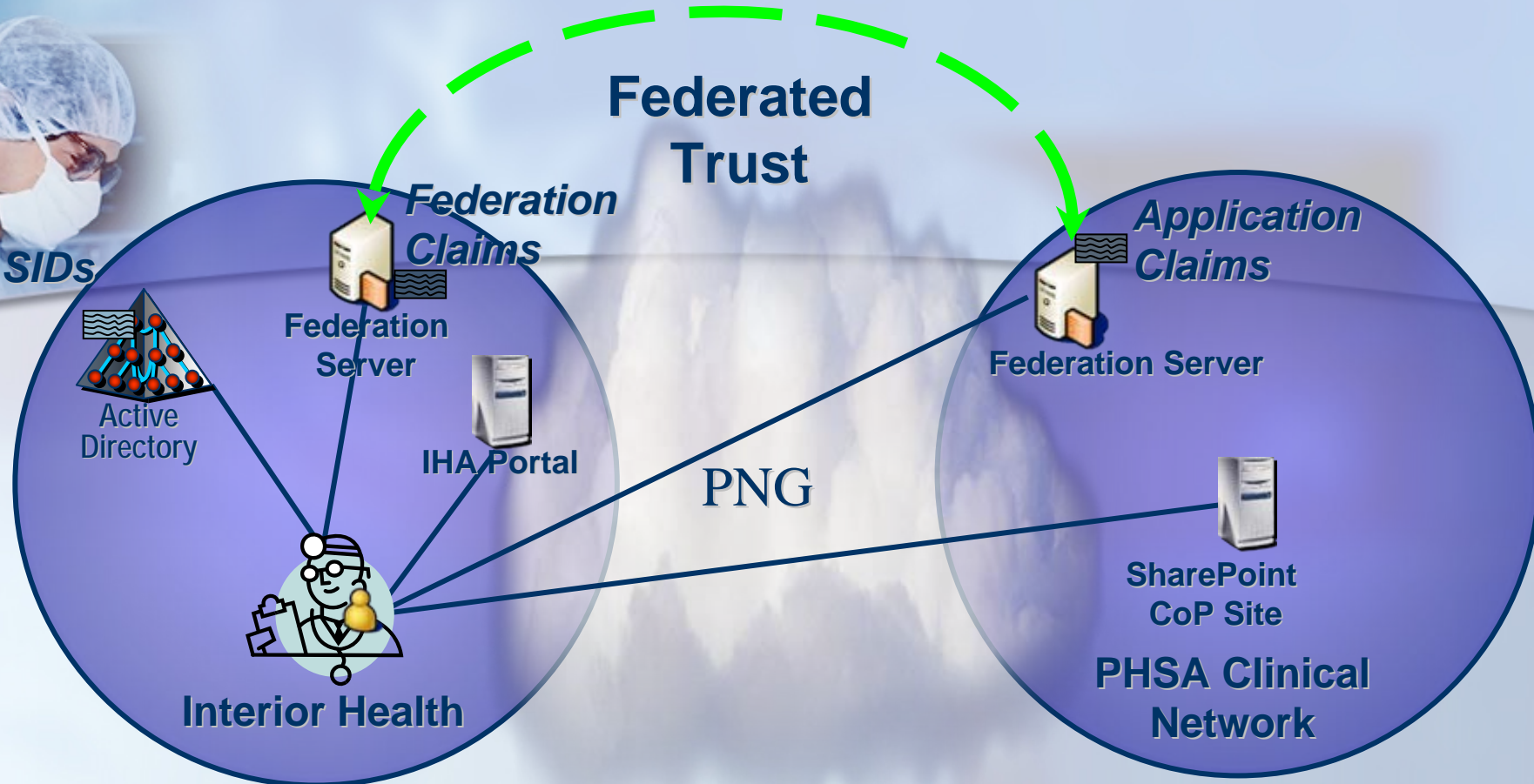
Interior Health







SIDs



1. Clinician accesses IHA Portal to PHSA SharePoint CoP Team Site.
2. Clinician redirected to Interior Health Authority Federation Server
3. Clinician obtains SAML security token from IHA Federation Server for PHSA Federation Server
4. Clinician obtains PHSA security token from PHSA ADFS Server for CoP Site
  - Claims specific to PHSA
5. Clinician granted access to PHSA CoP Team Site (as controlled by claims)



# Federated Authorities Project

## Next Steps

- PHSA/IHA Currently Working with Microsoft to Implement ADFS Infrastructure
  - 1) High Level Design Phase: Mar 1<sup>st</sup> – 31<sup>st</sup>
  - 2) Contract Sign Off: Mar 31<sup>st</sup>
  - 3) Procurement Phase: April 3<sup>rd</sup> – 30<sup>th</sup>
  - 4) Construct Phase: May 1<sup>st</sup> – June 30<sup>th</sup>
  - 5) Go live: July 2006



Questions?