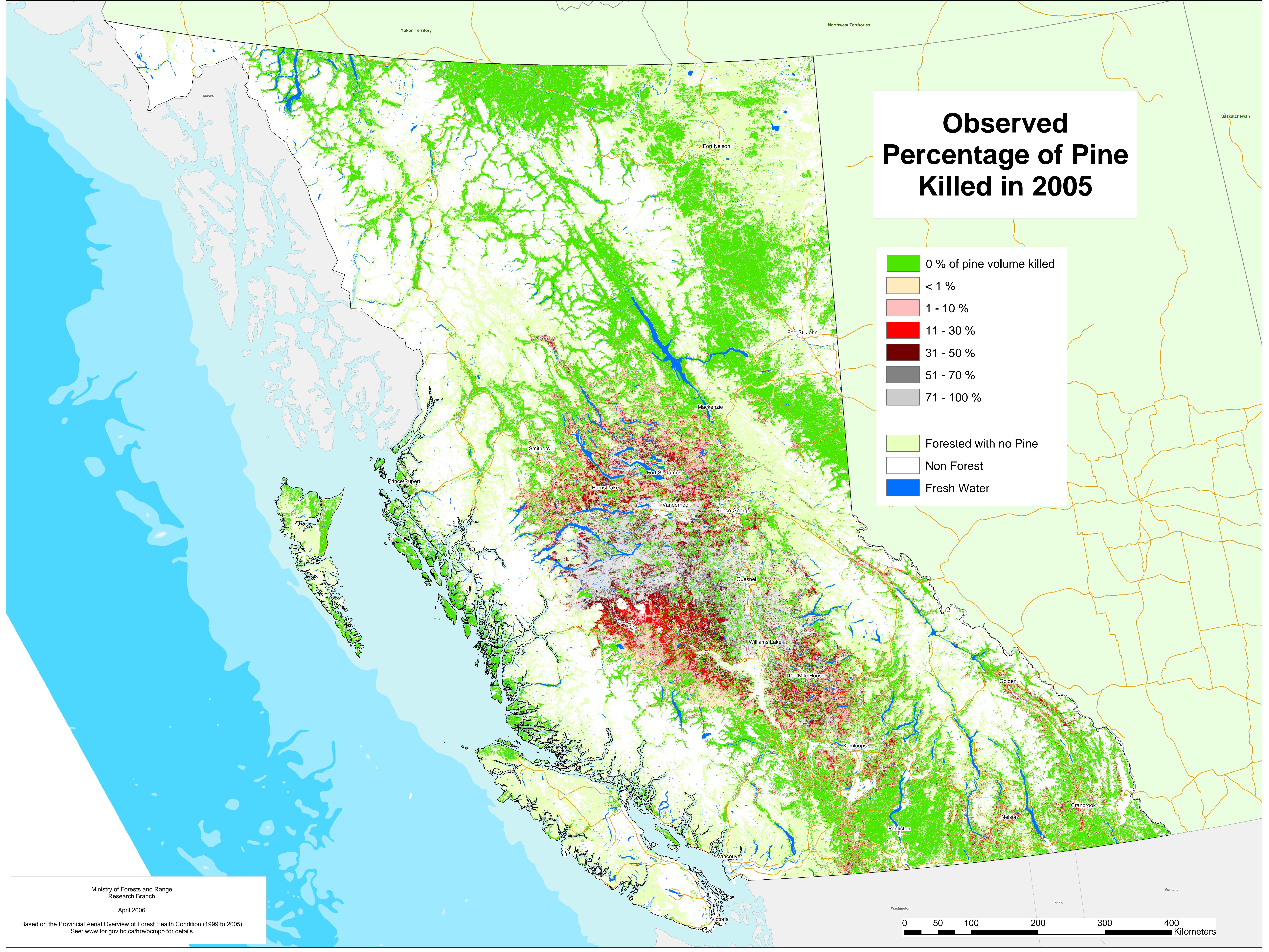
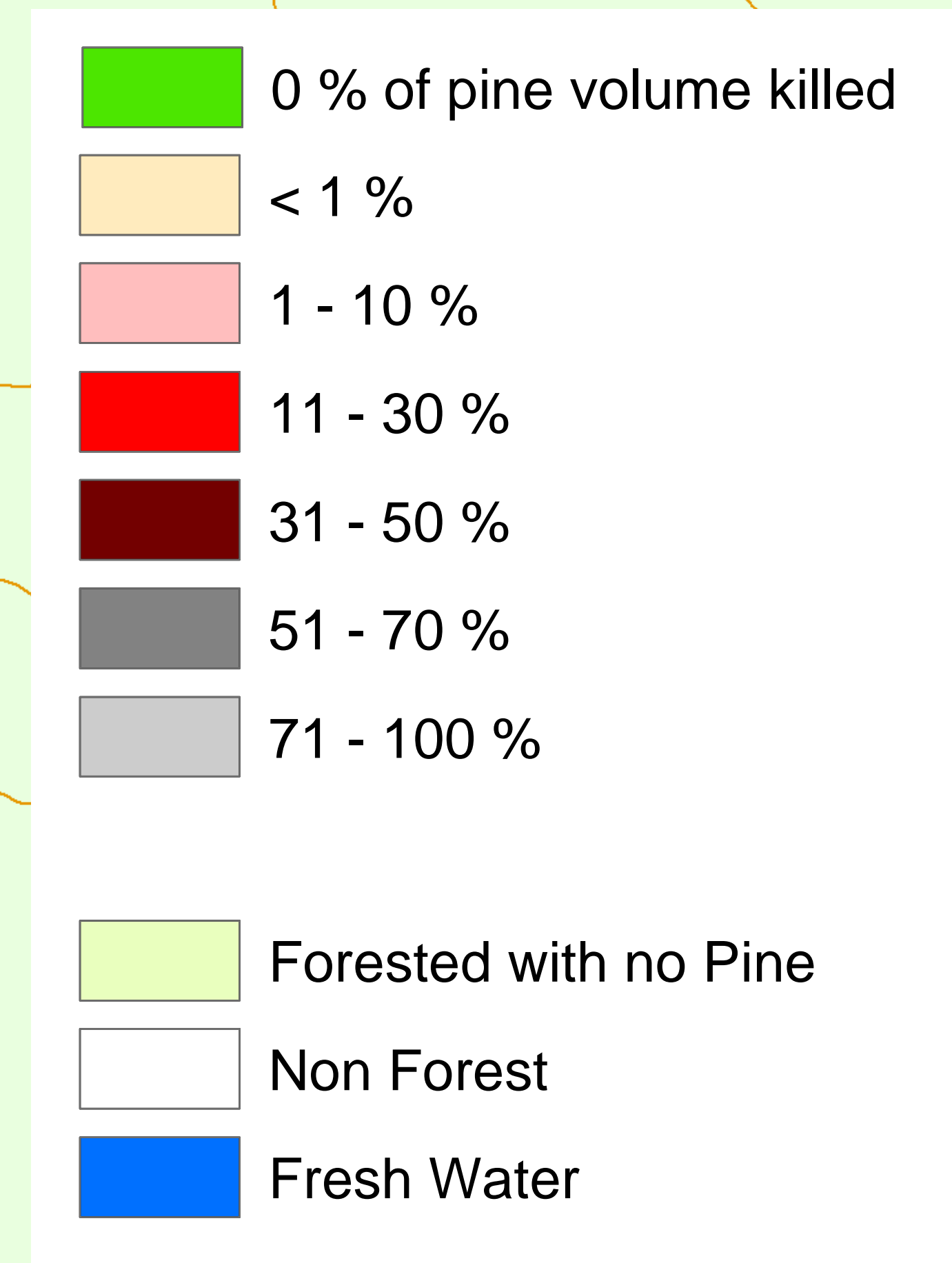


# Observed Percentage of Pine Killed in 2005



Ministry of Forests and Range  
 Research Branch  
 April 2006  
 Based on the Provincial Aerial Overview of Forest Health Condition (1999 to 2005)  
 See: [www.for.gov.bc.ca/hre/bcmap](http://www.for.gov.bc.ca/hre/bcmap) for details

