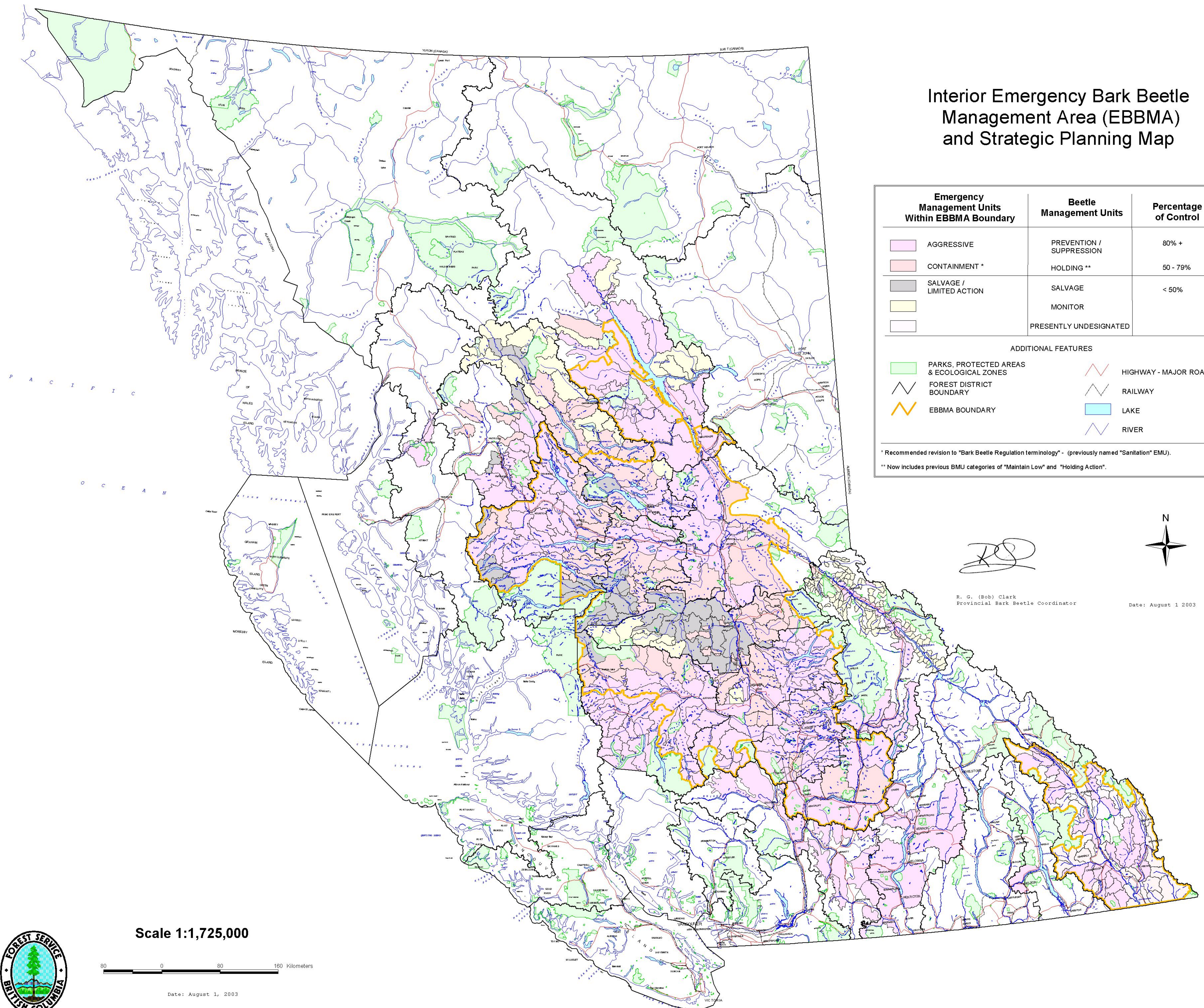


Interior Emergency Bark Beetle Management Area (EBBMA) and Strategic Planning Map

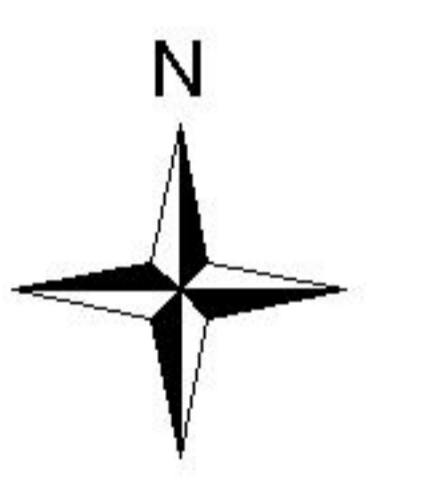


Emergency Management Units Within EBBMA Boundary	Beetle Management Units	Percentage of Control
AGGRESSIVE	PREVENTION / SUPPRESSION	80% +
CONTAINMENT *	HOLDING **	50 - 79%
SALVAGE / LIMITED ACTION	SALVAGE	< 50%
PRESENTLY UNDESIGNATED	MONITOR	
	PRESENTLY UNDESIGNATED	

ADDITIONAL FEATURES	
PARKS, PROTECTED AREAS & ECOLOGICAL ZONES	HIGHWAY - MAJOR ROAD
FOREST DISTRICT BOUNDARY	RAILWAY
EBBMA BOUNDARY	LAKE
	RIVER

* Recommended revision to "Bark Beetle Regulation terminology" - (previously named "Sanitation" EMU).
 ** Now includes previous BMU categories of "Maintain Low" and "Holding Action".

R. G. (Bob) Clark
 Provincial Bark Beetle Coordinator



Date: August 1 2003

Scale 1:1,725,000



Date: August 1, 2003

