

If suspected, report to:

BC Ministry of Agriculture and Lands

1767 Angus Campbell Road

Abbotsford, BC V3G 2M3 604-556-3001 Toll-free 1-888-221-7141



Bacterial Ring Rot of Potato

- Brown cracks on surface of tubers, leaves may yellow or wilt
- Vascular ring is brown/black with a creamy ooze and hollow spaces
- Not found in BC

Photos: www.al.gov.bc.ca/cropprot/brr.htm / www1.agric.gov.ab.ca (1)
Courtesy of North Dakota State University (2)



Chrysanthemum White Rust

- Produces small white to yellow spots on the top of the leaf that may be slightly dimpled
- Pinkish-white pustules on underside of leaves
- Often confused with brown rust
- Occasional outbreaks in Canada

Photos: www.al.gov.bc.ca/cropprot/cwrust.htm (1,2)



Daylily Rust

- Yellow and brown spots and/or streaks on leaf surfaces
- Yellow to orange powdery spores on underside of leaves that are very dusty when touched
- As symptoms progress, leaves will turn yellow and dry up
- Not found in BC

Photos: www.daylilyrust.org Courtesy of Jay Laundre (1,2)



Dutch Elm Disease

- Check trees in summer for wilted, curled, yellow, and brown leaves
- Brown streaks found in wood of infected branches
- Symptoms may be confused with Verticillium Wilt
- Not found in BC

Photos: www.al.gov.bc.ca/cropprot/ded.htm Courtesy of Manitoba Conservation (Forestry Branch) (1,2)



Golden Nematode and Pale Cyst Nematode

- Round globules (the cyst) found on roots of *Solanaceae* family (e.g. potato, tomato, eggplant, pepper, nightshade)
- Golden nematode present on Vancouver Island (quarantined area)
- Pale cyst nematode found in Newfoundland and Idaho (2006)

Photos: Golden Nematode Only Courtesy of AAFC (1), CFIA (2)



Plum Pox Virus

- Rings and spots on fruit of peach, apricot or plum
- Yellow ring spots or blotches on leaves
- Twisted or distorted leaves
- Spread by aphids and propagative material
- Not found in BC

Photos: www.al.gov.bc.ca/cropprot/ppv.htm
Courtesy of Gerry Walker: OMAFRA (1,2)



Ramorum Blight and Dieback (Sudden Oak Death)

- Spots and blotches on leaves, shoot dieback
- Many hosts including trees, shrubs, and herbaceous plants
- Symptoms can be similar to sun scald/cold injury
- Fuzzy line between healthy and infected tissue
- Infection will often follow the midrib of the leaf
- Found in California and Oregon

Photos: www.plantmanagementnetwork.org/ Courtesy of Everett Hanson OSU (1), Peter Angwin: USDA Forest Service (2)



Apple Clearwing Moth

- Adult wingspan 15-25mm; resembles peach tree borer moth
- Pale white larvae 15-17 mm long with brown head
- Larvae tunnel under bark near graft unions, burr knots, cankers
- Attacks apple, pear, crabapple, plums, cherries, hawthorn, mountain ash
- Present in the Similkameen Valley only

Photos: www.al.gov.bc.ca/cropprot/tfipm/clearwing.htm Courtesy of Christina Machial (1)



Apple Maggot

- Adult fly 2-4mm long with black zig-zag bands on wings; easily confused with other fruit flies.
- Larvae 6.5-8mm long maggots that tunnel through fruit
- Attacks apple, pear, plum, cherry, peach, hawthorn, cotoneaster
- Present in BC only in the Abbotsford area

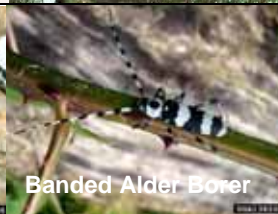
Photos: www.al.gov.bc.ca/cropprot/applemaggot.htm Courtesy of AAFC (1,2)



Apple Tortrix

- Adult wingspan 20-25mm
- Larvae are 20-23mm, greenish body with a brownish-orange head
- Attacks fruit trees, filbert, many other ornamental trees and shrubs
- Present in NW Washington

Photos: www.caes.state.ct.us Courtesy of Chris Maier (1,2)



Banded Alder Borer

Asian Long-horned Beetle

- Adult beetle 2.5-4.0 cm long with an irregular splattering of white spots
- May be confused with the Banded Alder Borer
- Attacks hardwood trees including poplar, alder, maple, arbutus
- Not found in BC

Photos: www.al.gov.bc.ca/cropprot/alhb.htm Courtesy of Brian Lenihan (1), Kenneth R. Law (2): www.forestryimages.org



Blueberry Maggot

- Adult fly 5mm long with black banded wings similar to the Apple Maggot
- Larvae 8mm long maggots, found in fruit
- Attacks blueberry, cranberry, huckleberry, lingonberry
- Not found in BC

Photos: www.al.gov.bc.ca/cropprot/bbmaggot.htm Courtesy of CFIA (1) and J.A.Payne (2): [USDA-ARS creatures.ifas.ufl.edu](http://USDA-ARS.creatures.ifas.ufl.edu)



Cherry Bark Tortrix

- Adult moth 8mm long; larvae 8-11 mm long caterpillars
- Larvae tunnel under bark; gum-like resin present around swellings and cankers on bark especially at graft and injury sites
- Prefers cherry & plum; attacks apple, firethorn, mountain ash, peach, pear
- Present in South Coastal BC only

Photos: Courtesy of Oregon Dept. Agriculture (1) www.al.gov.bc.ca (2)



Japanese Beetle

- Adult beetle 10-12mm long; feed on leaves of many trees and shrubs
- Grubs are c-shaped, white and about 2.5 cm long (when fully grown)
- Grubs feed on roots of turf grasses, ornamental plants, vegetables
- Not found in BC

Photos: www.al.gov.bc.ca/cropprot/jbeetle.htm / Courtesy of Bradford Walker (1); ForestryImages.org AAFC (2)



Oriental Fruit Moth

- Adult moth 7mm long
- Larvae 7-10mm long; resemble codling moth larvae
- Fruit damage similar to peach twig borer
- Attacks peach, plum, cherry, apple, pear
- Not found in BC

Photos: www.al.gov.bc.ca/cropprot/ofm.htm Courtesy of OMAFRA (1,2)



Yellow Starthistle

- Sharp spines on flowerhead bracts
- Can reach 0.6-1m tall
- Present in Washington and Idaho
- Not found in BC

Photos: www.al.gov.bc.ca/cropprot/starthistle.htm (1) Courtesy of John M. Randall (2): tncweeds.ucdavis.edu/photos/censo01.jpg