

**Western Premier's Conference
Lloydminster, AB**

May 4 - 6, 2005

**Mountain Pine Beetle
Crisis**

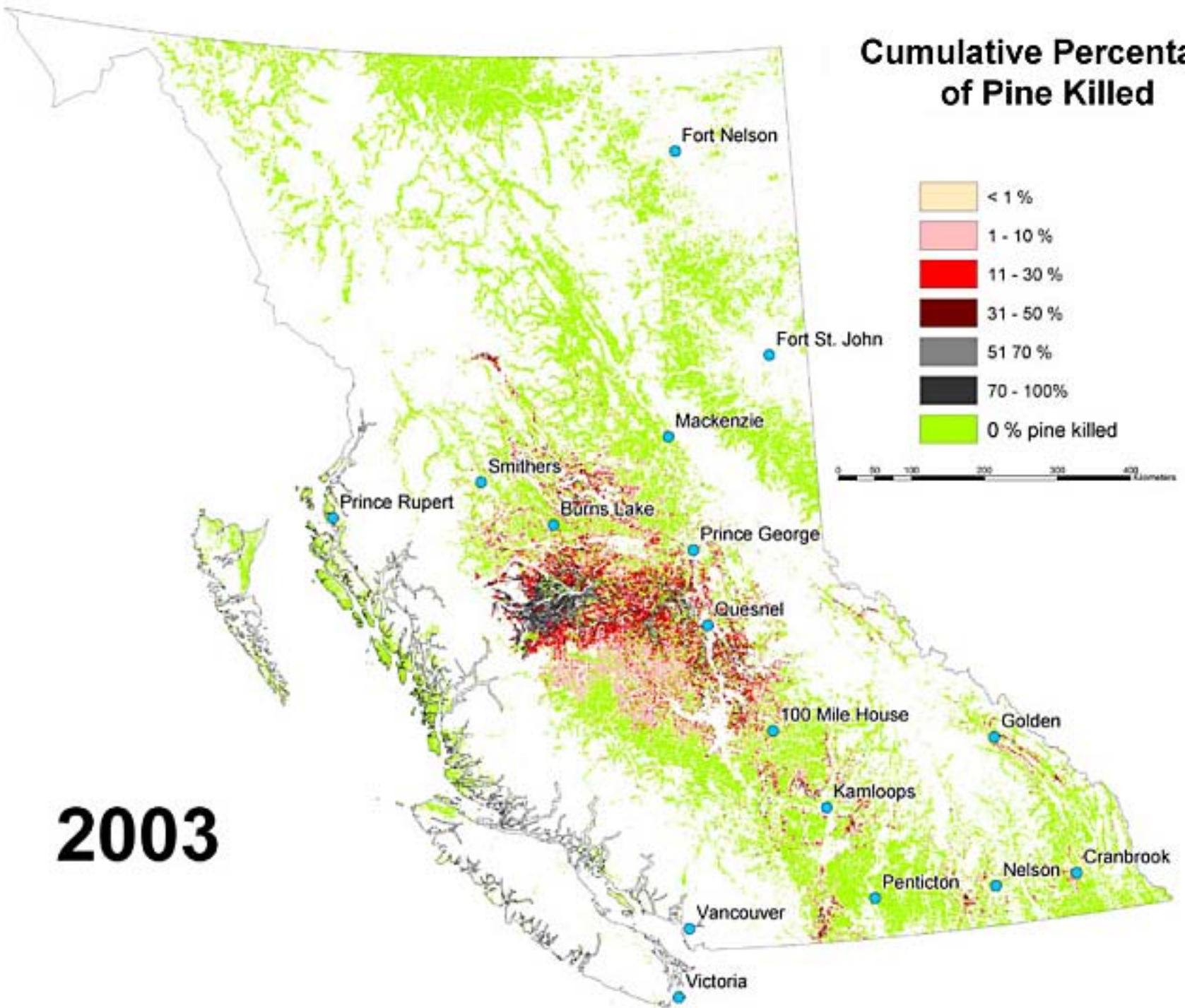




Magnitude of the Epidemic

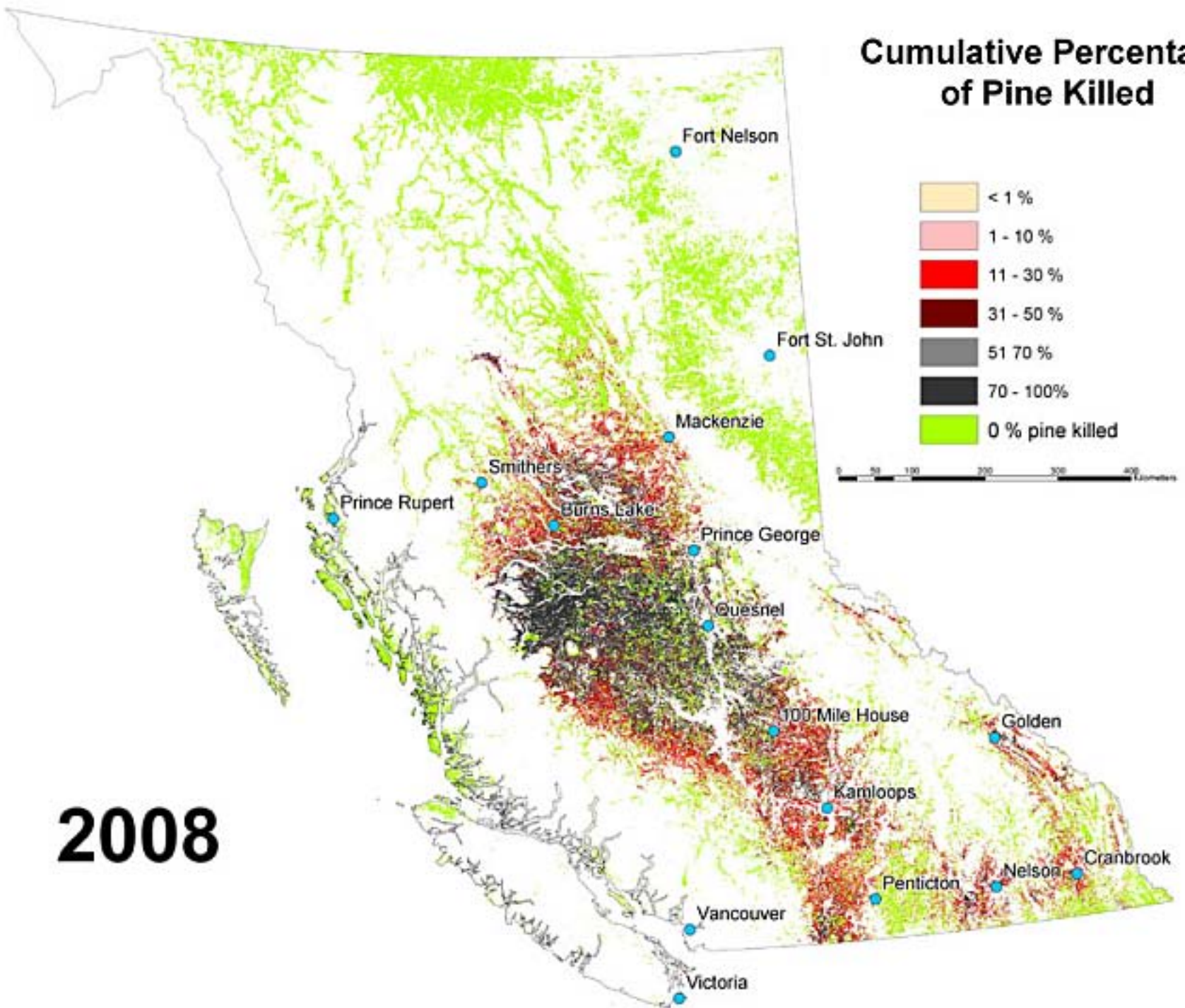
- Largest outbreak in North American history.
- By 2013 will have killed 80% of BC's 12 Million hectares of Pine forest.
- Threatens communities, First Nations, wildlife, fisheries, and B.C.'s economic health
- Priority concern for all of Canada in terms of;
 - Sustainable forest management,
 - Kyoto Accord commitments,
 - International trade implications, and
 - There are **No** climate or physical barriers to easterly spread.

Cumulative Percentage of Pine Killed



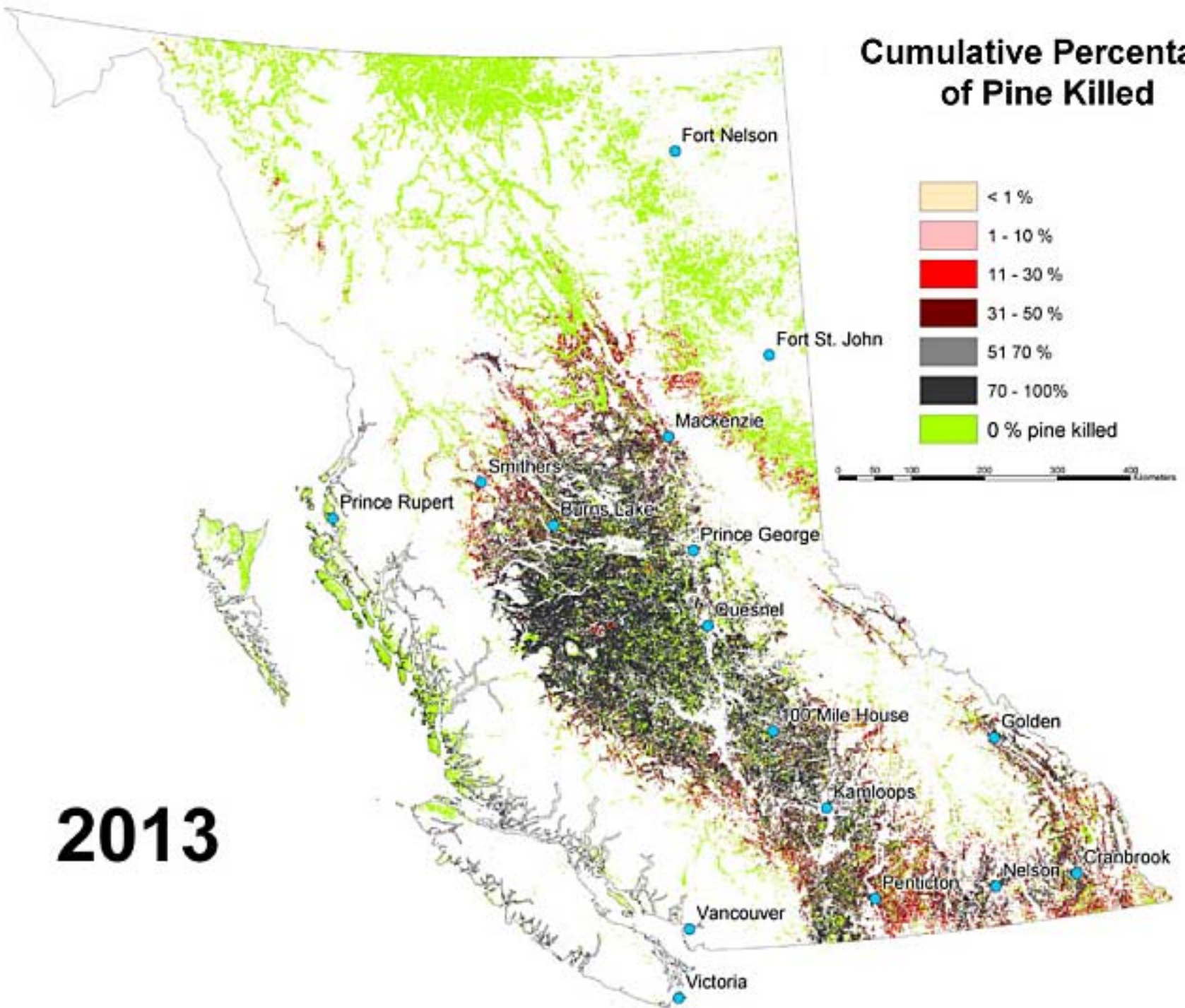
2003

Cumulative Percentage of Pine Killed



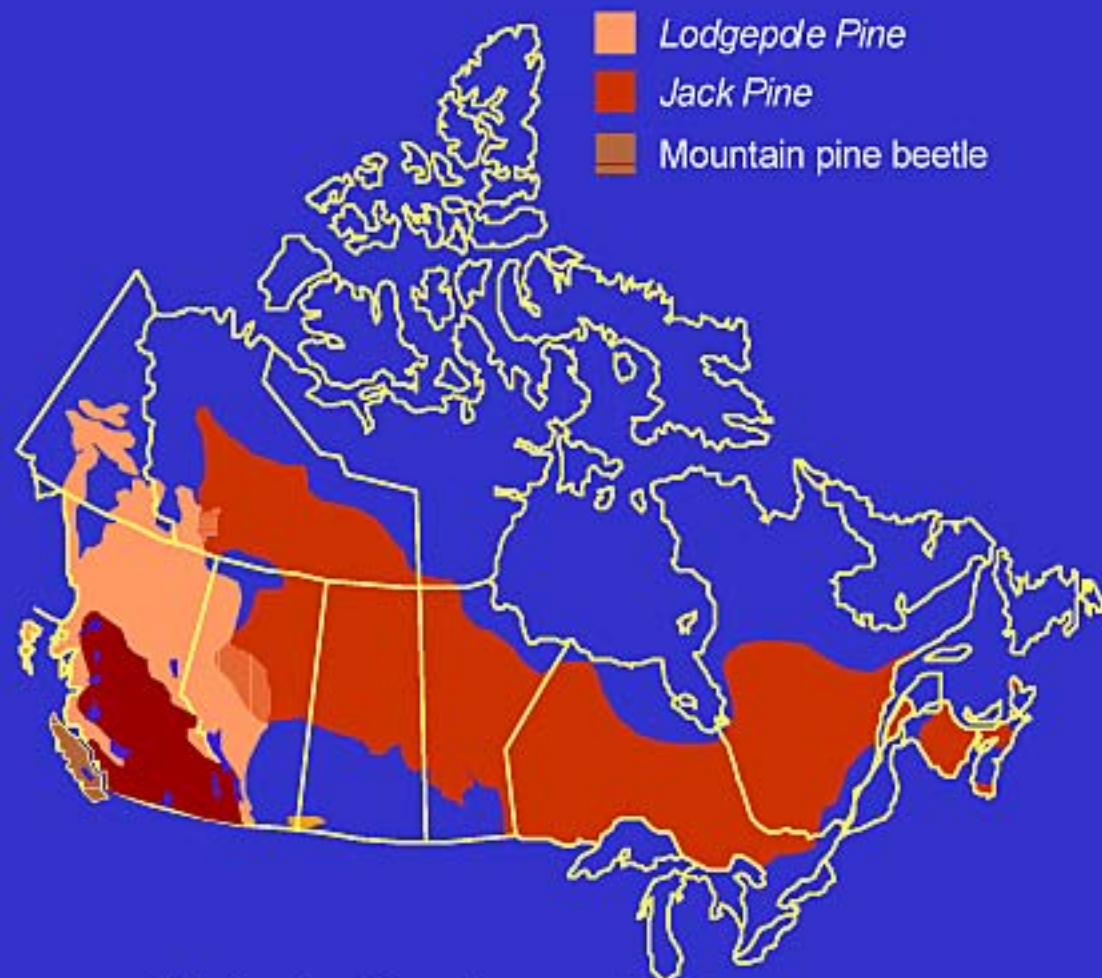
2008

Cumulative Percentage of Pine Killed



2013

Susceptible Pine Forests Across Canada



No climate or biological barriers to MPB



MPB Crisis Strategy

- B. C.'s Mountain Pine Beetle Strategy is to:
 - Stop the spread, especially outside of BC and limit further damage.
 - Salvage economic value from the dying forests with new and emerging forest-based activities.
 - Mitigate the environmental and economic damage through industry, government and community co-operation.



Requesting Cooperation & Support from Provinces, Territories and Federal Govt.

- Cooperation and support required from all jurisdictions to keep this disaster from destroying the nation's pine forests.
- Need federal government support to implement MPB Strategy through;
 - Aggressive spread control,
 - Fuel management to prevent fire,
 - Community economic diversification,
 - Market development and R&D,
 - Restoration of critical fish and wildlife habitat, and watersheds.