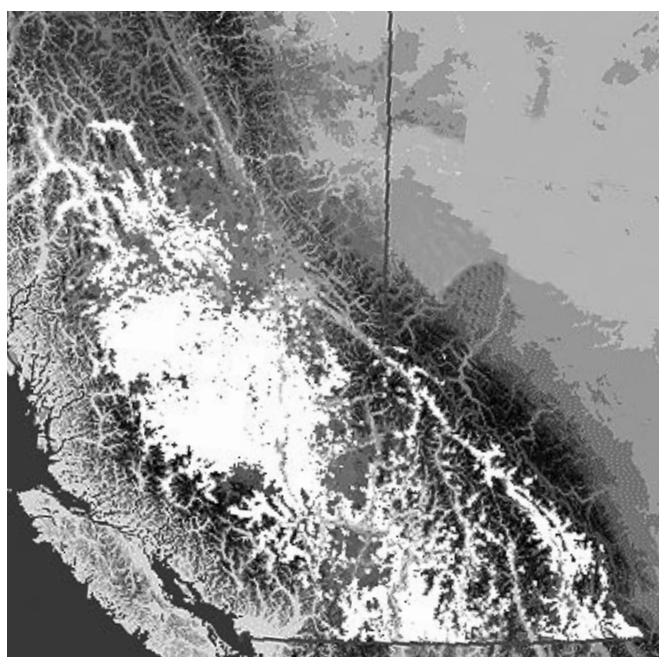


# B.C. Forests are under attack.



## What's at Risk

Already, \$20 billion in timber value is at risk of being lost. As a result, the supply of available timber in B.C.'s interior will be affected for up to 80 years, impacting more than 30 forest-dependent communities. The dry, dead trees also increase the risk of forest fires.

## Battling the Pine Beetle

A task force was appointed in 2001 to lead the development of an action plan now being implemented. This action plan includes:

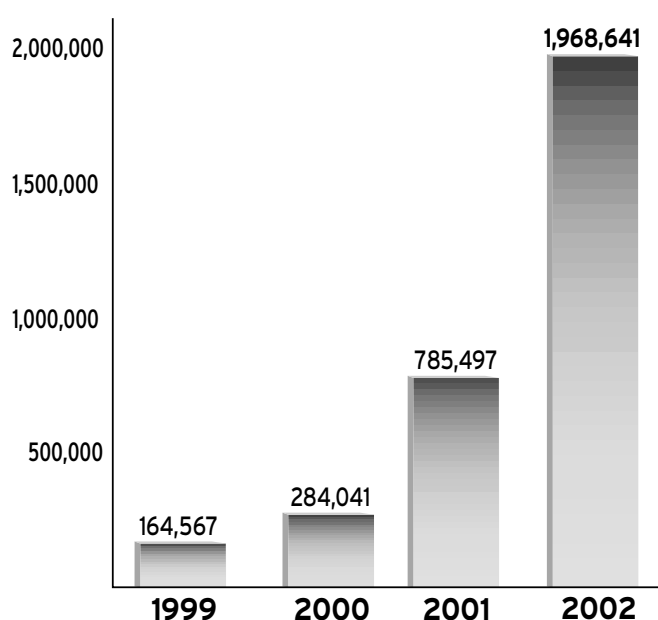
- Committing more than \$100 million to control measures over the last three years;
- Increasing the annual allowable cut and diverting forest harvesting to the leading edge of the infestation; and
- Restoring damaged areas through rehabilitation and replanting.

## The Mountain Pine Beetle

The current infestation is thought to be the worst insect epidemic in North America's history. It has consumed twenty times more forest than the fires this past summer, covering an area three times the size of Vancouver Island. It stretches from the U.S. border to Fort St. James and is still growing at a rate of 40 per cent every year. Abundant stands of mature lodgepole pine; warm, dry summers; and mild winters have all helped the beetle population explode. All that will stop the beetle's advance is sustained cold winter weather of -40 C or below, but we are taking steps to slow the infestation.



**Area Infested**  
(in Hectares)



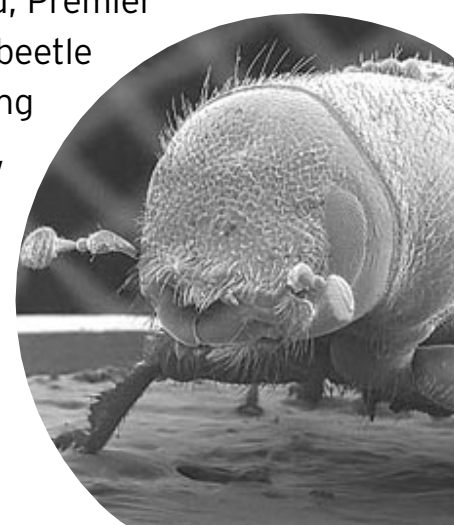
## Preventing Fires and Protecting Jobs

We're acting to protect forest industry jobs and to ensure the long-term economic health of forest-dependent communities. Because for every tree harvested, as many as 16 can be saved. By removing dry, dead trees today, we can reduce the risk of forest fires.

There is still more work to be done. To that end, Premier Gordon Campbell just convened a special pine beetle symposium in Quesnel to seek solutions, bringing together community leaders, industry experts, First Nations members, environmental representatives and others.

## Protecting Your Land

The pine beetle doesn't just infest trees on public land. To learn about steps you can take to prevent and combat the infestation, visit our Web site for more information.



For more information about the mountain pine beetle, the provincial action plan and how you can help, visit our Web site at [www.gov.bc.ca](http://www.gov.bc.ca)



BRITISH  
COLUMBIA