

BC
Ministry of Energy, Mines and
Petroleum Resources

Geological Survey Branch
**MINFILE MAP
NTS 104A
BOWSER LAKE**

This MINFILE release researched and compiled by:
W. Coombe and D. Jakobsen

Date Revised: March 1993
Scale 1:250 000

Total Number of Mineral Occurrences: 175

104G	104H	094E
104B	104A	094D
1030	103P	093M

Status

- Producer
- Past Producer
- Developed Prospect
- Prospect
- Showing

GEOLOGICAL LEGEND

INTRUSIVE ROCKS

CENOZOIC

TERTIARY

Eocene

- B.P. HYDER DIKE SWARMS: Includes Boundary (B) and Portland Canal (P) dike swarms: plagioclase porphyritic, biotite or biotite + hornblende granodiorite
- Tqm Quartz monzonite
- Tp Feldspar porphyry (probably includes some Hazelton Group extrusive or intrusive rocks)

MESOZOIC

JURASSIC TO CRETACEOUS

- JKm Diorite, hornblende diorite

JURASSIC

EARLY JURASSIC (?)

- Jgr Granodiorite

TRIASSIC

- Trm (Augite) diorite (includes some Hazelton Group volcanic flows)

STRATIFIED ROCKS

CENOZOIC

QUATERNARY

PLEISTOCENE AND HOLOCENE

- Qs Unconsolidated surficial clastic sediments and glacial deposits

MESOZOIC

JURASSIC TO CRETACEOUS

LOWER CRETACEOUS

BOWSER LAKE GROUP (JKbl - Koc)

- Koc DEVILS CLAW FORMATION: Non-marine conglomerate, sandstone, siltstone and shale
- JKbl McEVOY FORMATION: Non-marine shale, siltstone, coal, sandstone and conglomerate

MIDDLE JURASSIC TO LOWER CRETACEOUS

- IKjc CURRIER FORMATION: Non-marine to marginal marine shale, siltstone, sandstone, coal and carbonate
- JKbl UNDIVIDED: Mainly shale, sandy mudstone and sandstone (may correlate, in part, with the Jurassic Ashman Formation south of the map area)

TRIASSIC TO JURASSIC

HAZELTON GROUP (Trjh - mJsh)

MIDDLE JURASSIC

- mJsh SALMON RIVER FORMATION: Siltstone, greywacke, sandstone, some calcarenite, minor limestone, argillite, conglomerate, littoral deposits (locally includes the underlying Lower to Middle Jurassic Mount Dilworth Formations, comprising rhyolite, rhyolite breccia, crystal and lithic tuff. Only 30 metres thick, the Mount Dilworth Formation effectively lies along the contact line between the Salmon River and Betty Creek formations)

LOWER JURASSIC

- lJbc BETTY CREEK FORMATION: Pillow lava and breccia, andesitic and basaltic flows, green, red, purple and black volcanic breccia, conglomerate, sandstone and siltstone, crystal and lithic tuff, siltstone, minor chert and limestone

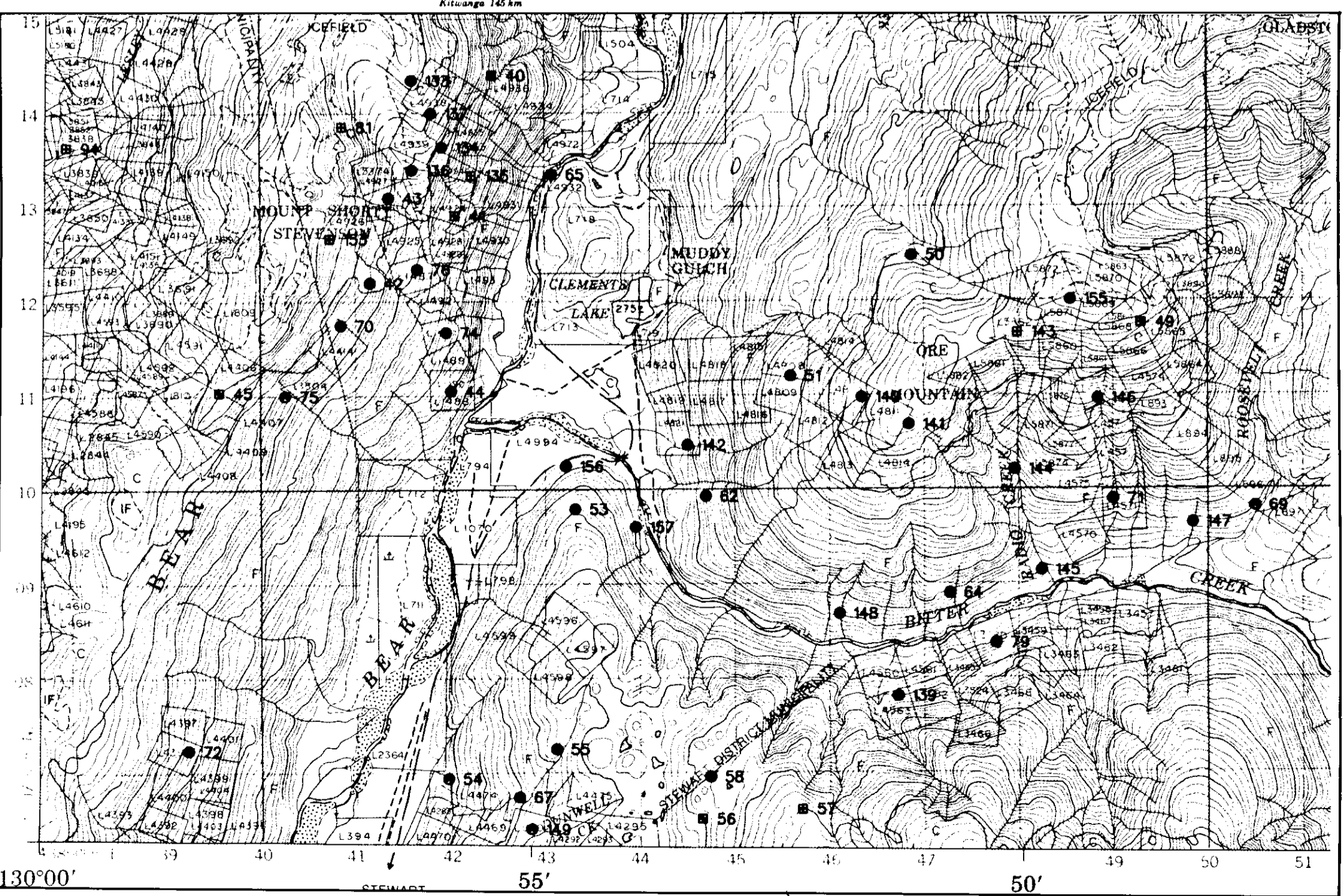
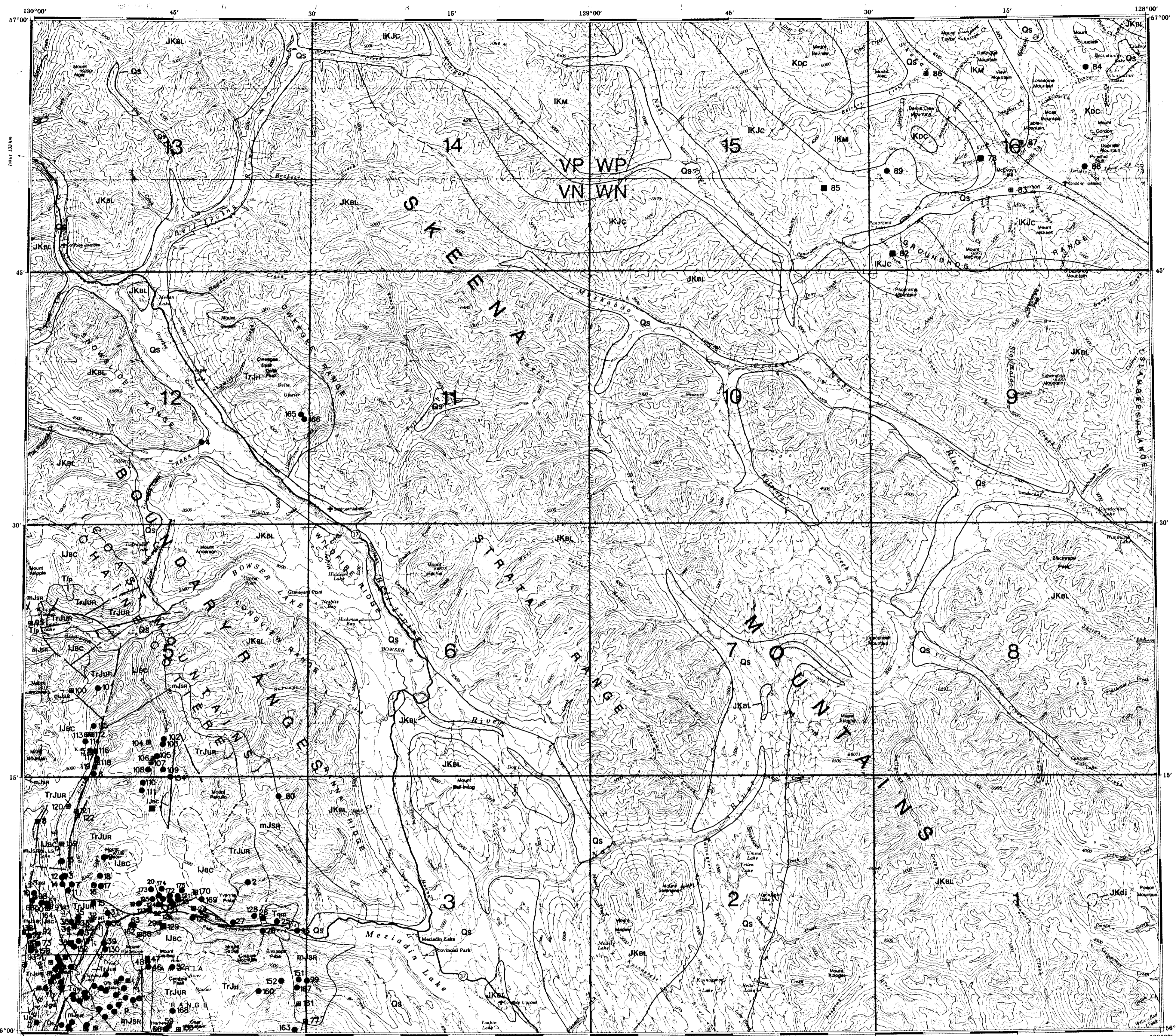
UPPER TRIASSIC TO LOWER JURASSIC

- TrJur UNUK RIVER FORMATION: Green, red and purple volcanic breccia, conglomerate, sandstone and siltstone; crystal and lithic tuff, sandstone, conglomerate, limestone, chert, minor coal

UPPER TRIASSIC TO MIDDLE JURASSIC

- Trjh UNDIVIDED: Mainly green, purple and red andesitic breccia, tuff and conglomerate; minor rhyolite, chert, greywacke, limestone, shale, siltstone (stratigraphic position uncertain)

Geological base and legend compiled from:
Cooke, H.O. and Bustin, R.M. (1991): Coal Bearing Facies in the Northern Bowser Basin (104A), B.C. Ministry of Energy, Mines and Petroleum Resources, Geological Paper 1990, Paper 1991, 1, pp. 415-418.
Geological Survey of Canada (1977): Skelton River Area, Cassiar District, British Columbia; Operation Skelton, Map 9190, Scale 1:250 000.
Grove, E.W. (1986): Geology and Mineral Deposits of the Unuk River-Salmon River-Arroyo area, B.C. Ministry of Energy, Mines and Petroleum Resources, Bulletin 63, 152 pp.
Sawyer, J.G., Beyer, D.A. and Ouellet, A.V. (compilers) (1979): Unuk River; Geological Survey of Canada Map 1419A, Scale 1:1 000 000.
For more detailed geology of the extreme southwestern corner of the map area see the following:
Aldrick, D.J. (1987): Geology and Mineral Deposits of the Salmon River Valley, Stewart Area (104A), B.C. Ministry of Energy, Mines and Petroleum Resources, Open File 1987-22, 1 map sheet, Scale 1:50 000.
Aldrick, D.J. and Britton, J.M. (1988): Geology and Mineral Deposits of the Sulphurets Area (104A), B.C. Ministry of Energy, Mines and Petroleum Resources, Open File 1988-1, 1 map sheet, Scale 1:50 000.



MAP LEGEND - 104A

MINFILE NUMBER	MINFILE NAME	COMMODITIES
001	TODD CREEK (SOUTH ZONE)	AU CU ZN PB CU
002	GOAT	AU AG ZN PB CU
003	LUCKY JIM 2 (L. 5719)	AU AG ZN PB CU
004	TRENT CREEK	AU AG ZN PB CU
005	MOONLIGHT (L. 4172)	AU AG ZN PB CU
006	WISGAM 1 (L. 5810)	AU AG ZN PB CU
007	BOW 15	AU AG ZN PB CU
008	BOW 32	AU AG ZN PB CU
009	BOW 31	AU AG ZN PB CU
010	WOODCOCK	AU AG ZN PB CU
011	TODD CREEK (NORTH ZONE EAST)	AU AG ZN PB CU
012	TODD CREEK (NORTH ZONE)	AU AG ZN PB CU
013	F 1 ZONE	AU AG ZN PB CU
014	TOC 9	AU AG ZN PB CU
015	KNOS 8	AU AG ZN PB CU
016	TERMINUS	AU AG ZN PB CU
017	HOPE 3 (L. 4901)	AU AG ZN PB CU
018	LODE 8	AU AG ZN PB CU
019	RUBIN 3 (L. 3792)	AU AG ZN PB CU
020	BARTON 1 (L. 4414)	AU AG ZN PB CU
021	RED TOP (L. 4803)	AU AG ZN PB CU
022	SLACK 3	AU AG ZN PB CU
023	DOCK	AU AG ZN PB CU
024	ENTERPRISE (L. 5349)	AU AG ZN PB CU
025	MONTECAL 1-8	AU AG ZN PB CU
026	FTZGERALD	AU AG ZN PB CU
027	SOUTHERN CROSS	AU AG ZN PB CU
028	REAR PASS MINING	AU AG ZN PB CU
029	GEORGE GOLD/COPPER LOWER	AU AG ZN PB CU
030	VICTOR	AU AG ZN PB CU
031	PORTLAND	AU AG ZN PB CU
032	BONANZA	AU AG ZN PB CU
033	MONTECAL 2 (L. 5365)	AU AG ZN PB CU
034	BIG CASINO (L. 4926)	AU AG ZN PB CU
035	WATERLOO N	AU AG ZN PB CU
036	RED CLIFF EXTENSION	AU AG ZN PB CU
037	RED CLIFF	AU AG ZN PB CU
038	INDEPENDENCE	AU AG ZN PB CU
039	DAWHOUSE (L. 4924)	AU AG ZN PB CU
040	A & T	AU AG ZN PB CU
041	PALMER	AU AG ZN PB CU
042	ACITE	AU AG ZN PB CU
043	MAMMOTH (L. 1488)	AU AG ZN PB CU
044	M.C. (L. 4407)	AU AG ZN PB CU
045	ST. ELMO	AU AG ZN PB CU
046	LUCKY DATE	AU AG ZN PB CU
047	MANOY 1,2 (L. 5864-5865)	AU AG ZN PB CU
048	LITTLE WONDER	AU AG ZN PB CU
049	JANE SHORE (L. 4008)	AU AG ZN PB CU
050	SUNNY	AU AG ZN PB CU
051	GOLD BAR NO. 1	AU AG ZN PB CU
052	TRIE 1 (L. 4497)	AU AG ZN PB CU
053	SIB ZONE	AU AG ZN PB CU
054	SUPHON	AU AG ZN PB CU
055	GOLDE	AU AG ZN PB CU
056	EMPIRE	AU AG ZN PB CU
057	BON ACCORD	AU AG ZN PB CU
058	D.D. CHUM	AU AG ZN PB CU
059	SILVER CROWN	AU AG ZN PB CU
060	LITTLE PAT	AU AG ZN PB CU
061	NEW YORK (L. 1485)	AU AG ZN PB CU
062	OLGA	AU AG ZN PB CU
063	ROYAL IRISH	AU AG ZN PB CU
064	GREY COPPER (L. 4187)	AU AG ZN PB CU
065	MAIN REEF	AU AG ZN PB CU
066	LODE 3 (L. 3871)	AU AG ZN PB CU
067	ROCKWELL (L. 3996)	AU AG ZN PB CU
068	BARTON (L. 4414)	AU AG ZN PB CU
069	RAND (L. 4971)	AU AG ZN PB CU
070	RED BLUFF (L. 4396)	AU AG ZN PB CU
071	DAILY SILVER (L. 3684-3685)	AU AG ZN PB CU
072	DUNDEE (L. 1491)	AU AG ZN PB CU
073	VIEWFRONT	AU AG ZN PB CU
074	BEN LOMOND (L. 1487)	AU AG ZN PB CU
075	BURTON	AU AG ZN PB CU
076	DISCOVERY	AU AG ZN PB CU
077	FLORENCE	AU AG ZN PB CU
078	SURPRISE	AU AG ZN PB CU
079	ICE 3	AU AG ZN PB CU
080	PANORAMA SOUTH	AU AG ZN PB CU
081	MOUNT JACKSON	AU AG ZN PB CU
082	HUBBARD	AU AG ZN PB CU
083	PANORAMA NORTH	AU AG ZN PB CU
084	EMPIRE ANTHRACITE	AU AG ZN PB CU
085	TELFER	AU AG ZN PB CU
086	OPERATOR MOUNTAIN	AU AG ZN PB CU
087	DAVE UPPER CURRIER	AU AG ZN PB CU
088	IRON CAP	AU AG ZN PB CU
089	M.J.	AU AG ZN PB CU
090	LAKESHORE (L. 4176)	AU AG ZN PB CU
091	SUNSHINE (L. 4194)	AU AG ZN PB CU
092	LESLY M. (L. 3638)	AU AG ZN PB CU

MAP LEGEND - 104A

MINFILE NUMBER	MINFILE NAME	COMMODITIES
093	KNP	AU AG ZN PB CU
094	STEWART	AU AG ZN PB CU
095	BUSH 1 (L. 5195)	AU AG ZN PB CU
096	SPENCER (L. 4172)	AU AG ZN PB CU
097	NELSON CREEK	AU AG ZN PB CU
098	BOW 15	AU AG ZN PB CU
099	BOW 32	AU AG ZN PB CU
100	BOW 31	AU AG ZN PB CU
101	WOODCOCK	AU AG ZN PB CU
102	TODD CREEK (NORTH ZONE EAST)	AU AG ZN PB CU
103	TODD CREEK (NORTH ZONE)	AU AG ZN PB CU
104	F 1 ZONE	AU AG ZN PB CU
105	TOC 9	AU AG ZN PB CU
106	KNOS 8	AU AG ZN PB CU
107	TERMINUS	AU AG ZN PB CU
108	HOPE 3 (L. 4901)	AU AG ZN PB CU
109	LODE 8	AU AG ZN PB CU
110	RUBIN 3 (L. 3792)	AU AG ZN PB CU
111	BARTON 1 (L. 4414)	AU AG ZN PB CU
112	RED TOP (L. 4803)	AU AG ZN PB CU
113	SLACK 3	AU AG ZN PB CU
114	DOCK	AU AG ZN PB CU
115	ENTERPRISE (L. 5349)	AU AG ZN PB CU
116	MONTECAL 1-8	AU AG ZN PB CU
117	FTZGERALD	AU AG ZN PB CU
118	SOUTHERN CROSS	AU AG ZN PB CU
119	REAR PASS MINING	AU AG ZN PB CU
120	GEORGE GOLD/COPPER LOWER	AU AG ZN PB CU
121	VICTOR	AU AG ZN PB CU
122	PORTLAND	AU AG ZN PB CU
123	BONANZA	AU AG ZN PB CU
124	MONTECAL 2 (L. 5365)	AU AG ZN PB CU
125	BIG CASINO (L. 4926)	AU AG ZN PB CU
126	WATERLOO N	AU AG ZN PB CU
127	RED CLIFF EXTENSION	AU AG ZN PB CU
128	RED CLIFF	AU AG ZN PB CU
129	INDEPENDENCE	AU AG ZN PB CU
130	DAWHOUSE (L. 4924)	AU AG ZN PB CU
131	A & T	AU AG ZN PB CU
132	PALMER	AU AG ZN PB CU
133	ACITE	AU AG ZN PB CU
134	MAMMOTH (L. 1488)	AU AG ZN PB CU
135	M.C. (L. 4407)	AU AG ZN PB CU
136	ST. ELMO	AU AG ZN PB CU
137	LUCKY DATE	AU AG ZN PB CU
138	MANOY 1,2 (L. 5864-5865)	AU AG ZN PB CU
139	LITTLE WONDER	AU AG ZN PB CU
140	JANE SHORE (L. 4008)	AU AG ZN PB CU
141	SUNNY	AU AG ZN PB CU
142	GOLD BAR NO. 1	AU AG ZN PB CU
143	TRIE 1 (L. 4497)	AU AG ZN PB CU
144	SIB ZONE	AU AG ZN PB CU
145	SUPHON	AU AG ZN PB CU
146	GOLDE	AU AG ZN PB CU
147	EMPIRE	AU AG ZN PB CU
148	BON ACCORD	AU AG ZN PB CU
149	D.D. CHUM	AU AG ZN PB CU
150	SILVER CROWN	AU AG ZN PB CU
151	LITTLE PAT	AU AG ZN PB CU
152	NEW YORK (L. 1485)	AU AG ZN PB CU
153	OLGA	AU AG ZN PB CU
154	ROYAL IRISH	AU AG ZN PB CU
155	GREY COPPER (L. 4187)	AU AG ZN PB CU
156	MAIN REEF	AU AG ZN PB CU
157	LODE 3 (L. 3871)	AU AG ZN PB CU
158	ROCKWELL (L. 3996)	AU AG ZN PB CU
159	BARTON (L. 4414)	AU AG ZN PB CU
160	RAND (L. 4971)	AU AG ZN PB CU
161	RED BLUFF (L. 4396)	AU AG ZN PB CU
162	DAILY SILVER (L. 3684-3685)	AU AG ZN PB CU
163	DUNDEE (L. 1491)	AU AG ZN PB CU
164	VIEWFRONT	AU AG ZN PB CU
165	BEN LOMOND (L. 1487)	AU AG ZN PB CU
166	BURTON	AU AG ZN PB CU
167	DISCOVERY	AU AG ZN PB CU
168	FLORENCE	AU AG ZN PB CU
169	SURPRISE	AU AG ZN PB CU
170	ICE 3	AU AG ZN PB CU
171	PANORAMA SOUTH	AU AG ZN PB CU
172	MOUNT JACKSON	AU AG ZN PB CU
173	HUBBARD	AU AG ZN PB CU
174	PANORAMA NORTH	AU AG ZN PB CU
175	EMPIRE ANTHRACITE	AU AG ZN PB CU
176	TELFER	AU AG ZN PB CU
177	OPERATOR MOUNTAIN	AU AG ZN PB CU
178	DAVE UPPER CURRIER	AU AG ZN PB CU
179	IRON CAP	AU AG ZN PB CU
180	M.J.	AU AG ZN PB CU
181	LAKESHORE (L. 4176)	AU AG ZN PB CU
182	SUNSHINE (L. 4194)	AU AG ZN PB CU
183	LESLY M. (L. 3638)	AU AG ZN PB CU

COMMODITY INDEX

CODE INDEX	COMMODITY INDEX
AS	Silver
AG	Argent
BA	Bauxite
BL	Barite
BU	Burnish
CL	Coal
CU	Copper
CO	Coal
FE	Iron
MO	Molybdenum
PB	Lead
TH	Thorium
UR	Uranium
ZN	Zinc