

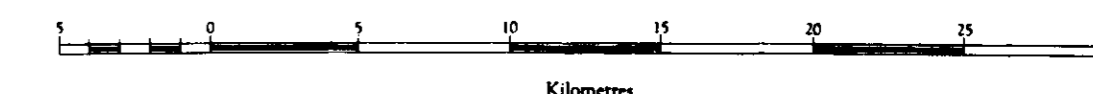


Province of British Columbia
Ministry of Energy, Mines and Petroleum Resources

MINFILE MAP 104P

McDAME MINERAL OCCURRENCE MAP

Scale 1:250 000



This project is a contribution to the Canada/British Columbia Mineral Development Agreement 1985-1990.



Province of
British Columbia

Ministry of
Energy, Mines and
Petroleum Resources



Energy, Mines and
Resources Canada

Énergie, Mines et
Ressources Canada

DATE REVISED: DECEMBER 1988
DATE UPDATED: APRIL 1991

TOTAL NUMBER OF OCCURRENCES: 117
: 130

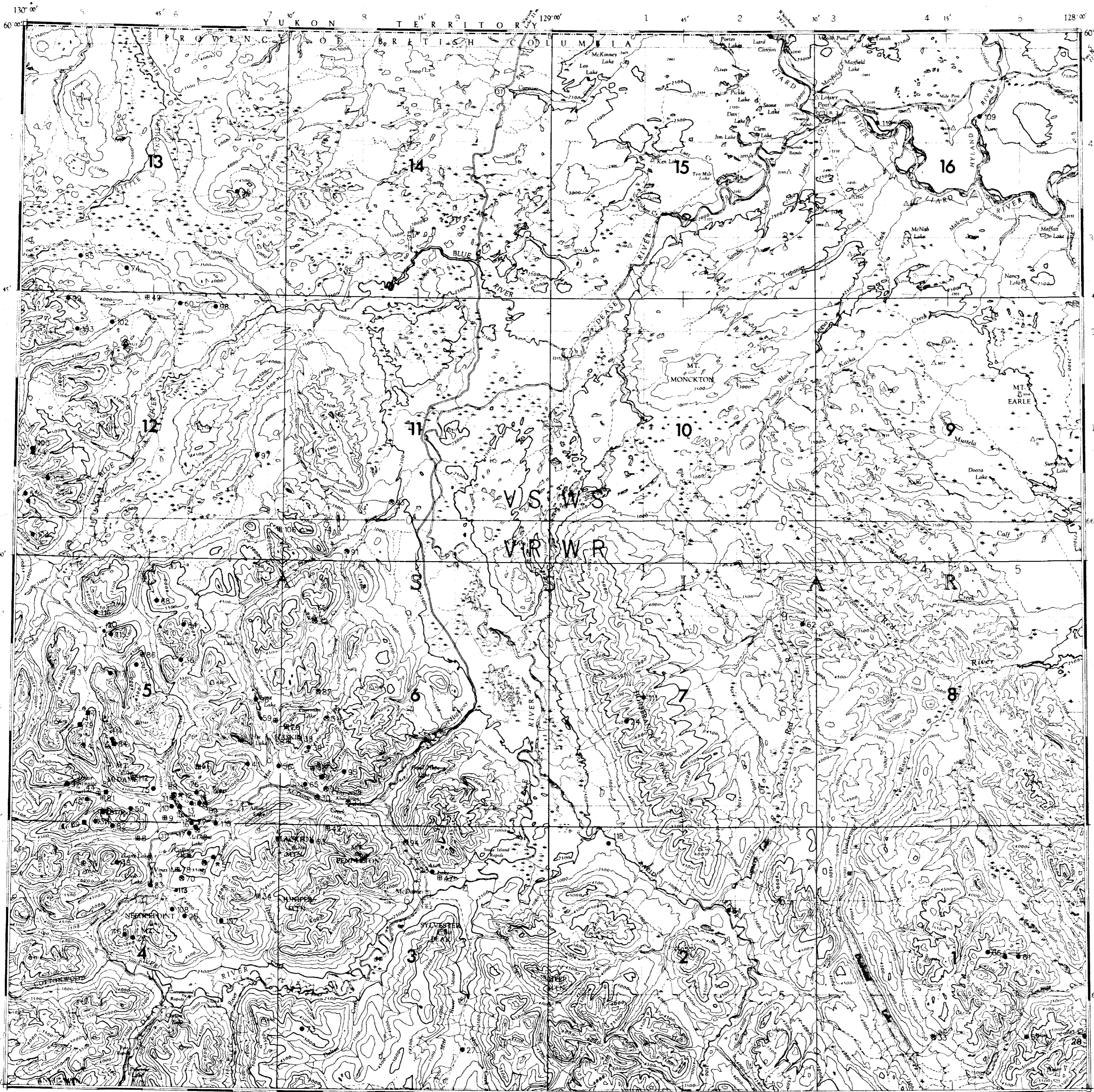
LEGEND

- STATUS**
- ★ Producer
 - ⊙ Past Producer
 - Developed Prospect
 - Prospect
 - Showing

INDEX

Y	U	K	O	N
1040				94M
104J	104I	94L		

MINFILE NUMBER	NAME	COMMODITY(S)	MINFILE NUMBER	NAME	COMMODITY(S)
104P 001	BLUE RIVER NICKEL	Ni	076	BOZO	Au, Ag
002	ZUS	Ab	077	PORCUPINE	Au, Ag, Cu
003	LAMB MOUNTAIN	Uo, Mo, Ma	078	SKY	Au, Ag, Zn, Cu
004	CONTACT	Ag, Pb, Zn, Bi, Uo, Mo, Mn	079	DEAD GOAT	Uo, Cu, Zn, Mo
005	CASSIAR ASBESTOS MINE	Ab, Jd, Tc	080	MIDDLE D	Zn, Pb, Ag, Ma
006	MAGNO	Ag, Pb, Zn, Ma	081	GRANITE CREEK	Ag, Pb, Zn, Au, Sn, Ma
007	ETRO	Au, Ag	082	PANT	Ag, Pb, Zn, Sn, Cu
008	LAMB CREEK	Cu, Zn, Au, Ag, Pb	083	JACKPINE	Zn, Ag, Cd
009	RED	Au, Ag	084	McDAME	Ab
010	HOPEFULL	Au, Ag, Cu, Zn	085	CHIEF NORTH	Ba
011	MACK	Au, Ag, Cu, Zn	086	MARS	Ab
012	TAURUS	Au, Ag, Zn, Cu	087	POORMANS CREEK PLACER	Au
013	KLONDIKE FR	Au, Ag	088	QUARTZ CREEK PLACER	Au
014	SNOWY CREEK	Au	089	SNOWY CREEK PLACER	Au
015	WING'S CANYON	Au, Ag	090	SOMERS CREEK PLACER	Au
016	ROCKY RIDGE	Au, Ag, Cu	091	SPRING CREEK PLACER	Au
017	GOLD HILL	Au, Ag, Cu	092	TROUTLINE CREEK PLACER	Au
018	MORA	Au, Ag, Cu	093	FRENCH CREEK PLACER	Au
019	VOLLAUG	Au, Ag, Cu, Pb, Zn	094	GOLD CREEK PLACER	Au
020	HASKINS MOUNTAIN	Ag, Zn, Pb, Sn, Cu	095	JUDO	Pb, Zn, Ag, Sn, As, Bi, Cd
021	JOE REED	Ag, Zn, Pb	096	GOLDBREAK - 27	Cu, Ag, Au, Pb, Zn
022	McDAME BELLE	Ag, Pb, Zn, Cu, Uo	097	ELLA ROSE	Ag, Cu, Pb, Zn
023	CARLICK	Ag, Pb, Zn, Ba	098	CRYSTAL MOUNTAIN	Pb
024	CASSIAR BERYL	Be	099	REGGIE	Pb
025	PETE	Au, Ag, Cu, Zn, Pb	100	ANVIL CHROMITE	Cr
026	LOW GRADE	Be, Zn, Bi, Sn, Ma	101	ANVIL MOLYBDENUM	Mo
027	KIRK	Cu, Ag, Zn, Pb	102	CHIEF EAST	Cu
028	HIDDEN VALLEY	Cu	103	CHIEF SOUTHWEST	Ba, Cu
029	ERICKSON	Au, Ag, Cu, Zn	104	BLUE	Ba, Pb, Zn
030	McDAME CREEK PLACER	Au	105	MARE	Ag, Au, Cu
031	DENNIS CREEK PLACERS	Au	106	AX	Pb, Cu, Zn
032	ROSELLA CREEK PLACER	Au	107	NOME	Cu
033	WALKER CREEK PLACER	Au	108	NOME WEST	Au
034	HUNTER	Au, Ag, Cu, Zn	109	HYLAND RIVER GOLD PLACER	Au
035	CASSIAR MOLY	Mo, Cu	110	DOROTHY	Au, Ag
036	MOON	Ab	111	JOHNNY CREEK	Uo, Cu
037	N	Mo, Uo	112	BOOMERANG	Ag, Au, Zn, Cu
038	JOHN	Zn, Cu, Pb, Bi	113	KATHERINE	Pb, Ag
039	LUNA	Pb, Zn	114	CASSIAR PIT	Cu, Zn
040	RAY	Mo, Ag	115	DIABLO	Ag, Cu, Zn
041	LUCKY SHOT	Au, Cu	116	ET	Ba
042	RAM	Cu, Ag	117	JAN	Ba, Ag, Cu, Pb, Zn
043	MOUNT REED	Mo, Uo, Zn, Pb, Cu, Ma	118	RAPID RIVER COAL	C1
044	UPPER D	Ag, Pb, Zn, Au, Ma	119	LIARD RIVER COAL	C1
045	ACE	Cu	120	BRX	Pb, Cu, Zn, Sb
046	RICH	Ag, Pb, Zn			
047	ATAN	Ba, Pb, Zn, Cu, Ag			
048	VINES LAKE	Mo			
049	SHAWN	Ba, Cu			
050	TROUTLINE CREEK	Cu			
051	RAPID RIVER	Pb, Zn			
052	VALE	Zn, Pb, Ba			
053	HOPE	Cu			
054	BLUE DOME	Mo			
055	WOLFE	Cr, O1, Ab			
056	PI	Mo, Uo, Zn			
057	WILDCAT	Au, Ag, Cu, Zn, Pb			
058	TIBOR	Zn, Ag, Cu, Pb			
059	HASKIN MOUNTAIN NORTHWEST	Mo, Zn, Pb, Cu			
060	PIP	Cu, Ag			
061	ATAN	Zn, Pb			
062	LON	Pb, Zn, Ba			
063	FOX	Cu, Ag			
064	RET	Ab			
065	SECOND NORTH FORK	Ag, Zn, Pb			
066	VERDE	Cu			
067	SNOWY CREEK KROMONITE	Cr			
068	CREEK	Cr			
069	STORIE	Mo			
070	CUSAC	Au, Ag, Zn, Pb, Cu			
071	KUHN	Uo, Mo, Zn, Sb, Cu, Ma			
072	ROMAN	Ag, Pb, Zn, Cu			
073	EAGL	Au, Ag, Zn, Sb, Pb			
074	ALEX CHIEF LAKE	Ba			
075	ELAN	Ag, Au, Cu, Zn			



Topographic base map produced by SURVEYS AND MAPPING
BRANCH, ENERGY, MINES AND RESOURCES CANADA.