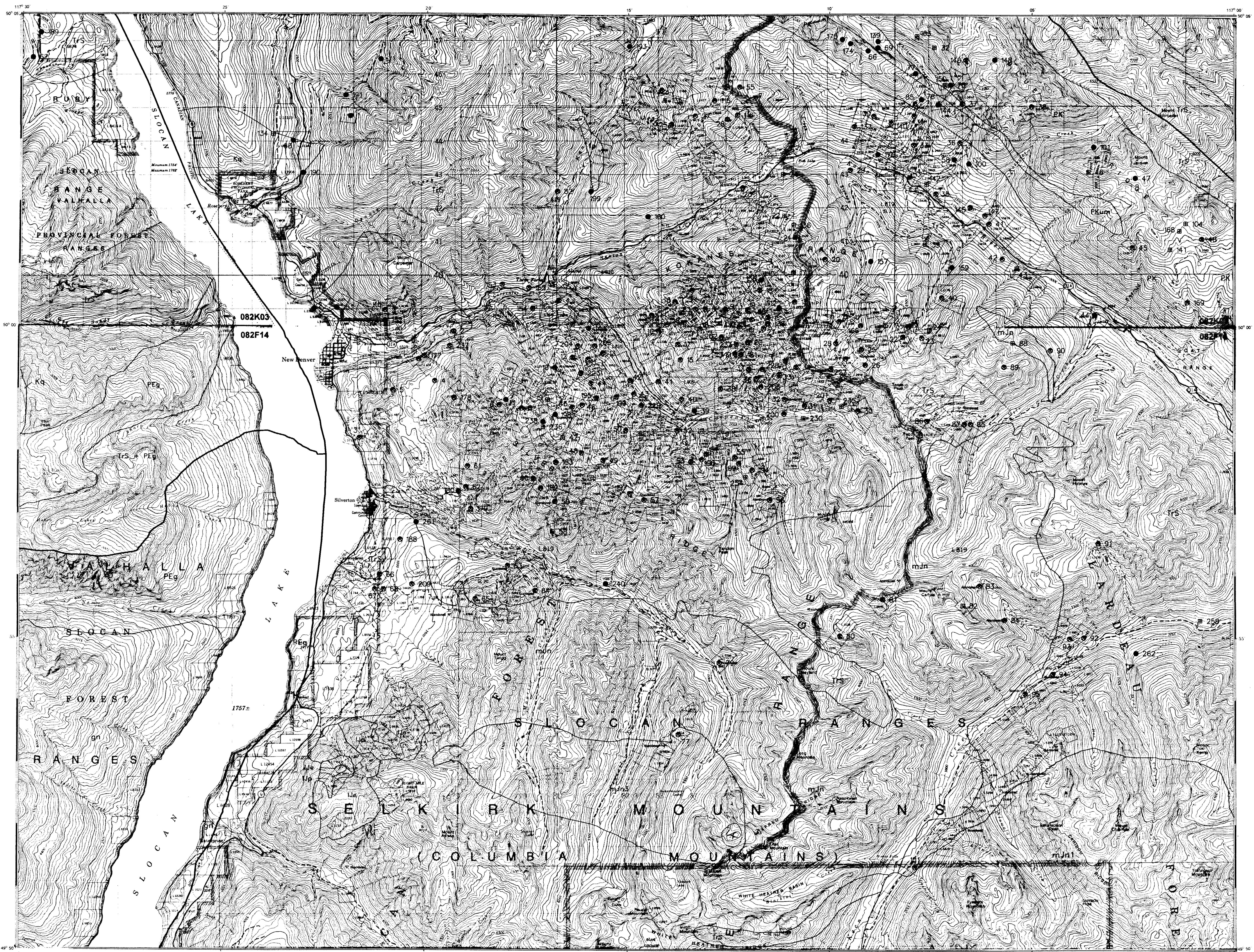


GEOLOGICAL LEGEND

LAYERED ROCKS

- QUATERNARY
PLEISTOCENE AND RECENT
LOWER JURASSIC
TRIASSIC
SLOCAN GROUP
PERMIAN TO CARBONIFEROUS
UPPER MISSISSIPPIAN TO (?) PERMIAN
CAMBRIAN TO DEVONIAN (?)
LOWER CAMBRIAN
PROTEROZOIC TO (?) LOWER PALEOZOIC
UPPER PROTEROZOIC TO LOWER CAMBRIAN
LOWER PROTEROZOIC
TERTIARY
MESOZOIC
CRETACEOUS
MIDDLE JURASSIC
DEVONIAN



Geological Survey Branch
MINFILE MAP
Slocan Camp and Area
NTS 082K03, 082F14 (parts of)
Date Revised: March 1996
Scale 1:50 000

Total Number of Mineral Occurrences: 228
Status: Producer, Past Producer, Developed Prospect, Prospect, Showing

MAP LEGEND - 082FNW

Table with columns: MINFILE NUMBER, NAME, COMMODITIES. Lists various mineral occurrences and their associated commodities.

MAP LEGEND - 082KSW

Table with columns: MINFILE NUMBER, NAME, COMMODITIES. Lists various mineral occurrences and their associated commodities.

Occurrences Deleted from Previous Map Releases
082K03, 082F14 (parts of) - SLOCAN CAMP and AREA
Table with columns: OLD NUMBER, OLD NAME, REASON FOR DELETION

COMMODITY LEGEND
CODE INDEX: Ag, Au, Cd, Ch, Cu, Fe, Gd, Hg, In, K, Li, Mn, Mo, Ni, Pb, Pt, Sn, Tl, U, Zn
COMMODITY INDEX: Arsenite, Silver, Gold, Cadmium, Chromite, Copper, Lead, Manganese, Nickel, Potassium, Tin, Tungsten, Zinc

Geological map and legend compiled from: Brown, D.A. and Logan, J.M. (1989) Geology and Mineral Evaluation of Kootenai District Provincial Park, Southern British Columbia (S27N11, 14, & C. Ministry of Energy, Mines and Petroleum Resources, Paper 1989-5, 47 pages.