

GEOLOGICAL LEGEND

LAYERED ROCKS

- CENOZOIC**
- QUATERNARY**
- PLEISTOCENE AND RECENT**
- Qal Unconsolidated glacial, fluvial and alluvial deposits
- TERTIARY**
- MIOCENE AND PLEISTOCENE**
- MvC CHILCOTIN GROUP: non-marine plateau basalt
- Eocene**
- EP **PENTICTON GROUP:** calcalkaline transensional volcanics; includes andesite and dacite flows and tufts, rhyolite tuff and minor welded tuff, Marron formation
- PALEOZOIC and MESOZOIC**
- DEVONIAN/TRIASSIC**
- DTH **HARPER RANCH GROUP:** subterranean of Quesnellia comprising argillite, chert, limestone, and island arc derived clastic and volcanoclastic rocks, including sandstone and conglomerate
- PALEOZOIC**
- CARBONIFEROUS TO PERMIAN**
- CPA **ANARCHIST GROUP:** part of the Okanagan Subterranean of Quesnellia comprising oceanic and marginal basin volcanics and sediments, includes chert, schist, greenstone, limestone, chert, and minor ultramafic rock
- PROTEROZOIC**
- PM **MONASHEE COMPLEX:** peritroctonic rocks consisting of amphibolite and gneiss with lesser quartzite and marble
- uPs **SHUSWAP TERRANE:** part of the Monashee Complex affected by Tertiary metamorphism; includes schist, gneiss and paragneiss

INTRUSIVE ROCKS

- CENOZOIC**
- TERTIARY**
- Eocene**
- mEc **CORRYLL INTRUSIONS:** biotite monzonite, syenite, pyroxenite ("Black Lead") and minor granite stocks and feeder dikes to the Marron volcanics
- Eg** **SHINGLE CREEK PORPHYRY:** porphyritic granite
- MESOZOIC**
- CRETACEOUS**
- KTVg **OKANAGAN BATHOLITH:** granodiorite and granite; includes the Tertiary Ladybird Suite (to the east) and Vahlele intrusions
- KW **WHATSAN BATHOLITH:** granodiorite and monzonite
- JURASSIC**
- mJp **Granodiorite, diorite and quartz diorite;** includes some rocks previously mapped as Nelson intrusions

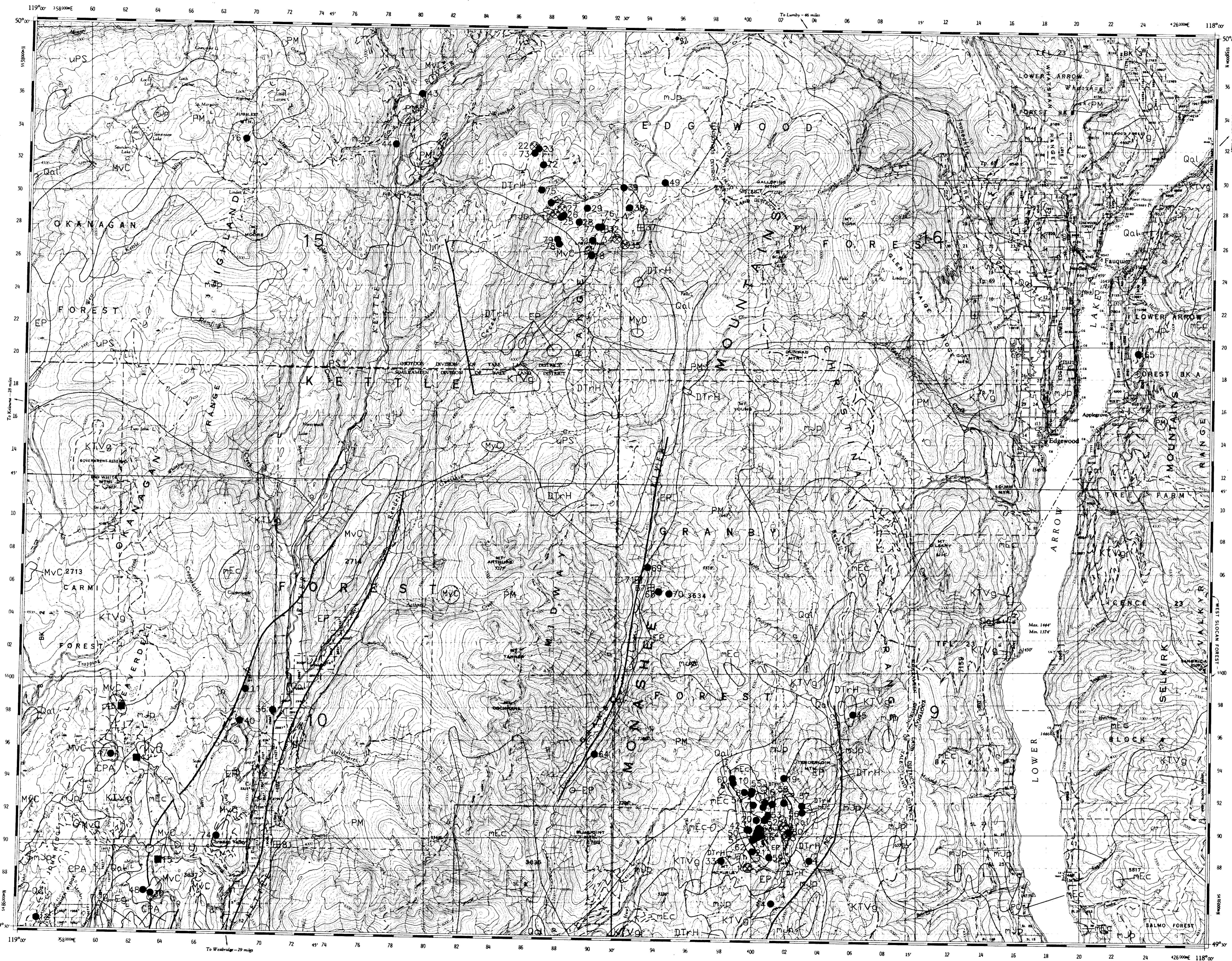
Geological map and legend compiled from:

- Carnes, C.E. (1945). Geology, Kettle River (West Half), British Columbia, Geological Survey of Canada, Map 836A, scale 1:253 440.
- Christopher, P.A. (1978). East Okanagan Uranium Area (Palomares to Beavertail), South-central British Columbia (802176, 11, 14, 15), B.C. Ministry of Energy, Mines and Petroleum Resources, Preliminary Map 29, scale 1:50 000.
- Church, B.N. (1960). Preliminary Geological Map of the Kettle River (West Half), B.C. Ministry of Energy, Mines and Petroleum Resources, Preliminary Map 39, scale 1:50 000.
- Church, B.N. (1961). Preliminary Geological Map of the Kettle River (East Half), B.C. Ministry of Energy, Mines and Petroleum Resources, Preliminary Map 45, scale 1:50 000.
- Hoy, T., Church, B.N., Legu, A., Gibson, G., Glover, K., Grant, B., Wheeler, J.D. and Durve, K.P. (1994). Geology of the Kettle River Map Area, B.C. Ministry of Energy, Mines and Petroleum Resources, Open File 1994-8.
- Little, H.W. (1961). Geology, Kettle River (West Half), British Columbia, Geological Survey of Canada, Map 15-1901, scale 1:253 440.
- Olusich, A.V. (1978). Thompson-Shuswap-Okanagan, British Columbia, Geological Survey of Canada, Open File 837, scale 1:250 000.
- Tompson-Kill, D.J. (1969). Geology, Penticon, British Columbia, Geological Survey of Canada, Map 1736A, scale 1:250 000.
- Wheeler, J.D. and Murray, P. (1991). Tectonic Assemblage Map of the Canadian Cordillera and adjacent parts of the United States of America, Geological Survey of Canada, Map 7126, scale 1:200 000.

Positions of all geological contacts are approximate. In the case of an apparent disagreement between an occurrence's geological location on the map and its stratigraphic setting given in the MINFILE documentation, the latter should be given priority.

Occurrences Deleted From Previous Map Releases

OLD NUMBER	OLD NAME	REASON FOR DELETION
082EN013	Doe	Combined with 082EN014
082EN018	Director 5	Combined with 082EN022
082EN020	Dane	Insufficient documented mineralization
082EN033	Silver Lump	Combined with 082EN032
082EN055	MS	Insufficient documented mineralization
082EN056	Crystal Copper	Insufficient documented mineralization
082EN060	Cordova	Combined with 082EN022
082EN061	Ontario	Combined with 082EN022
082EN063	P	Insufficient documented mineralization
082EN066	Franklin Camp	Insufficient documented mineralization



MINFILE MAP NTS 082ENE KETTLE RIVER

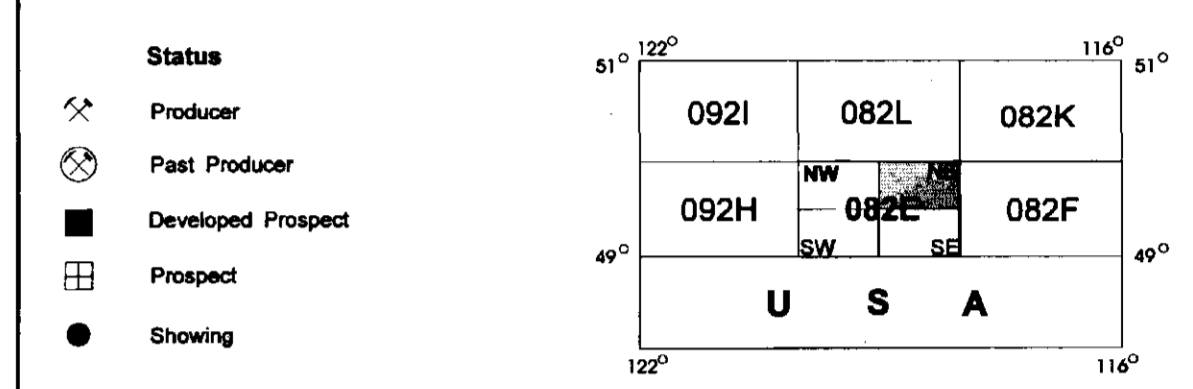
This MINFILE release researched and compiled by:
J.W. Page

Date Revised: November 1996

Scale 1:100 000



Total Number of Mineral Occurrences: 81



MAP LEGEND - 082ENE

MINFILE NUMBER	NAME	COMMODITIES
001	MCKINLEY	CU AG PB ZN AU
002	BANNER	AG AU PB ZN CU PT PD
003	UNION	AG AU ZN PB CU PT PD
004	LITTLE	PB ZN
005	STURCESTER	AU AG CU MO ZN PB PT
006	ALVERILL	CU AG PT PD
007	BUFFALO	CU AG CU PT PD
008	MAPLE LEAF	FE AU AG CU PT PD
009	ROYAL TINTO	FE CU AU AG ZN MO WO
010	COPKET	CU AU AG ZN MO WO
011	LEIGHWORTH	AU AG PB ZN
012	BULLION	CU AU PB ZN
013	SLUD	CU AU PB ZN
014	FLUKI	CU AU PB ZN
015	WATERLOO	CU AU PB ZN AU CD CU
016	LIGHTNING PEAK PERIDOTE	CU AU PB ZN AU CD CU
017	PINTO	AU AG CU PB ZN
018	VERDE (L1015)	AU AG CU PB ZN
019	YELLOW JACKET	CU PB ZN
020	MORNING	AU AG PB ZN
021	DICTATOR	AU AG PB ZN
022	POTISI	AG AU PB ZN
023	SILVER SPOT LOC. 8	PB CU AG ZN
024	SILVER SPOT LOC. 9	PB AU AG ZN
025	AU	AG AU PB ZN CU
026	SILVER SPOT NO. 3	AG PB ZN
027	COLLER	AG PB ZN
028	LUMPY	AG ZN PB AU CU
029	RAMPALD	AU AG ZN
030	KIL	CU AU PB ZN AU CU
031	KELARNEY	AG PB ZN CU AU
032	BLUE	AG PB ZN CU AU
033	PAY DAY	AG ZN CU PB
034	BIG BILL	AG ZN CU PB
035	PILOT	AG CU PB ZN MO
036	SAND	AG CU PB ZN MO
037	CUP LAKE	AG ZN PB CU ZN
038	UNION	AG AU PB ZN
039	LOU MARK	AU AG CU PB ZN WO
040	MAR	AU AG CU PB ZN WO
041	BLIZZARD	UR ZN
042	MAR	CU AU AG MO
043	ALDIE	AU AG ZN PB CU
044	ADMISTAKE	AU AG ZN CU
045	ALPHA	PT AU AG ZN CU
046	GOLDEN	PT AU AG ZN CU
047	BLUE JAW	CU AG
048	MOUNTAIN LION	CU AG
049	LUCKY JACK (L10265)	CU PT AU
050	WHEAT BEAR	CU PT AU
051	IRON CAP	CU PT AU
052	STAWA	PT CU
053	COLUMBIA	PT CU
054	FRANKLIN CAMP LIMESTONE	PT CU
055	DEADWOOD	LS AU AG PB ZN CU
056	CANE 7	UR AU PB ZN
057	LAURA	AG AU PB ZN
058	COMPLETER (L7308)	AG AU PB ZN
059	CLIFF	AU AG
060	BETH	AU AG
061	LEAH	AU AG
062	JANE	AU AG CU
063	ANNA	AU AG
064	AZZA 1	AG AU PB
065	AZZA 7	AG AU PB
066	KET	UR AG PB ZN
067	RICH	AG AU PB ZN
068	VICTORIA EAST	AU AG AU
069	VICTORIA WEST	AU AG AU
070	RICH ROCK	AG AU WO
071	RICH ROCK WEST	AG AU WO
072	SEVER	CU AU
073	GRAND CREEK	UR AU PB ZN
074	KAH I 5	UR AU PB ZN

COMMODITY LEGEND

CODE INDEX	COMMODITY INDEX
AG	Silver
AU	Gold
CU	Copper
FE	Iron
GS	Garnet
LS	Limestone
MO	Molybdenum
NI	Nickel
OL	Olivine
PT	Platinum
PD	Palladium
UR	Uranium
WO	Wolfram
ZN	Zinc
CD	Cadmium
CU	Copper
GS	Garnet
GR	Granite
IR	Iron
LS	Limestone
MO	Molybdenum
NI	Nickel
OL	Olivine
PT	Platinum
PD	Palladium
UR	Uranium
WO	Wolfram
ZN	Zinc