

## GEOLOGICAL LEGEND

### CENOZOIC

TERTIARY AND QUATERNARY  
PLEISTOCENE AND RECENT

Qa Gravel, sand, silt, clay, till

### MESOZOIC AND CENOZOIC

CRETACEOUS AND TERTIARY

KTg Granite, granodiorite

### MESOZOIC

CRETACEOUS

UPPER CRETACEOUS

uKd DUNVEGAN FORMATION: Sandstone, shale; minor conglomerate

UPPER AND LOWER CRETACEOUS

Kfsa FORT ST. JOHN GROUP: Shale, sandstone; coal

LOWER CRETACEOUS

iKb BULLHEAD GROUP: Sandstone; conglomerate; shale; coal

iKt BULLHEAD GROUP AND MOOSEBAR AND GATES FORMATIONS: Sandstone; conglomerate; shale; coal

JURASSIC AND CRETACEOUS

JkM MINNES GROUP: Sandstone; shale; coal

JURASSIC

Jf FERNIE FORMATION: Shale; siltstone; minor sandstone

TRIASSIC AND JURASSIC

Tjt TAKLA GROUP: Basic tuffs; breccias; agglomerate flows

TRIASSIC

Tt PARDONET, CHARLIE LAKE, BALDONNEL, BOCKO, LUDINGTON, TOAD, GRAYLING, LIARD AND SULPHUR MOUNTAIN FORMATIONS: Siltstone; sandstone; dolomite; limestone

PALEOZOIC

CARBONIFEROUS AND PERMIAN

CpsM SLIDE MOUNTAIN GROUP: Greenstone; argillite; limestone; slate; quartzite

CARBONIFEROUS

LOWER CARBONIFEROUS

Cr RUNDLE GROUP: Greenstone; argillite; limestone; slate; banded quartzite

Cp PROPHET FORMATION: Limestone; calcareous mudstone; spiculite; chert nodules

DEVONIAN AND CARBONIFEROUS

Dca BESA RIVER FORMATION: Argillite; calcareous shale; minor limestone, spiculite

SILURIAN AND DEVONIAN

Sd1 Mainly DUNEDIN, STONE RIVER AND MUNCHO-McCONNELL FORMATIONS: Limestone, dolomite, shale, sandstone

SILURIAN

Sn NONDA FORMATION: Dolomite, quartzites

ORDOVICIAN

O1 Mainly KECHIKA GROUP AND CHUCHINA, MONKMAN AND BEAVERFOOT FORMATIONS: Limestone, sandstone, dolomite, shale, quartzite

CAMBRIAN

UPPER CAMBRIAN

Cl LYNX FORMATION: Argillite; calcareous argillite; limestone, dolomite

MIDDLE CAMBRIAN

C1 SNAKE, INDIAN, TITKANA AND ARCTOMYS FORMATIONS: Silty, sandy and argillaceous dolomite, varicoloured shale, dolomite, minor quartzite

LOWER CAMBRIAN

Cg GOG GROUP: Quartzite; siltstone

CAMBRIAN TO DEVONIAN

Pu UNDIVIDED (INCLUDES STRATA FROM UPPER CAMBRIAN TO MIDDLE DEVONIAN IN AGE): (Mainly) limestone, dolomite, shale, quartzite

PROTEROZOIC

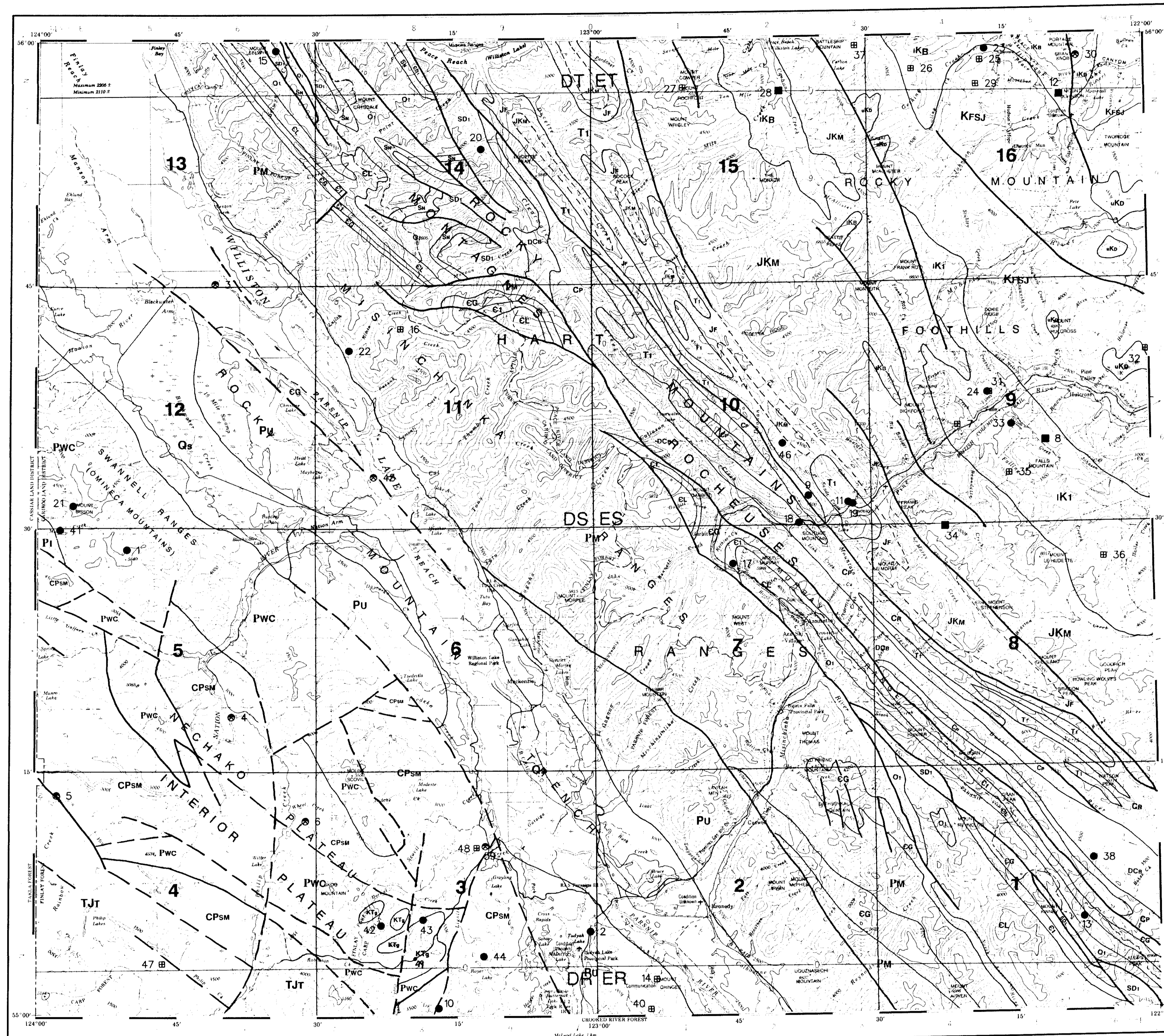
UPPER PROTEROZOIC

Pm MISINCHINKA GROUP: Argillite; quartzite; siltite; phyllite; limestone; dolomite; diamictite

INGENIKA GROUP: Phyllite; quartzite; schist; gneiss; limestone

WOLVERINE COMPLEX: Quartz mica schist, granitoid gneiss; granodiorite and pegmatite (of probable Cretaceous age)

Geological legend and base derived from:  
Stott, D.F., McMeekin, M.S., Taylor, G.C. and Muller, J.E. Compilers (1982): Pine Pass (0930) Map Area, Geological Survey of Canada, Open File 925, 1:125,000  
Tipper, H.W., Campbell, R.B., Taylor, G.C. and Stott, D.F., Compilers (1974): Parsnip River, Geological Survey of Canada, Map 1424A, 1:100,000



## Geological Survey Branch MINFILE MAP NTS 0930 - PINE PASS

This MINFILE release researched and compiled by:  
Fox Geological Consultants Ltd., G.J. Payle,  
E. Van Der Flier-Keller and P.S. Fischl  
Date Revised: March 1992

Scale 1:250 000

Total Number of Mineral Occurrences: 48

Status  
 x Producer  
 o Past Producer  
 ■ Developed Prospect  
 □ Prospect  
 ● Showing

094 C	094 B	094 A
093 N	093 O	093 P
093 K	093 J	093 I

### MAP LEGEND - 0930

MINFILE NUMBER	NAME	COMMODITIES
001	FORTUNE'S EYE	MO
002	TWOYAK LAKE	AU PT IR
003	BILL CUST'S BAR	AU PT IR
004	NATION RIVER BAR	AU PT IR
005	RAINBOW CREEK	AU PT IR
006	PHILIP AND WHEEL CREEKS	AU PT IR
007	NORMAN CREEK	CL
008	WILLOW CREEK	VA
009	PINE	MO
010	JACK	PT
011	LEMOYNE	CL
012	PEACE RIVER CANYON	PT
013	AN	SI
014	WIN	PT ZN
015	JET	FE MA
016	FALCON	LS
017	MOUNT MURRAY	LS
018	SOUTHWEST MOUNTAIN	LS
019	SILVER SANDS	LS
020	FEARLESS RIVER	RS LA CE PR ND SM
021	FALLS	BN
022	LAUREL	BN
023	GETTING CREEK	CL
024	CRASSER CREEK	CL
025	DOWLING CREEK	CL
026	SOUTH MOUNT GETTING	CL
027	WEST CARBON CREEK	CL
028	CARBON CREEK	CL
029	BR. DOWLING CREEK	CL
030	KING GETTING	CL
031	FISHER CREEK	CL
032	TREFF	CL
033	PINE RIVER	CL
034	GOODRICH	CL
035	FALLS MOUNTAIN	CL
036	FALLING CREEK	CL
037	ADAMS	PP
038	BAKER CREEK	LS
039	MCKENZIE LIMESTONE	LS
040	CHIN	LS
041	URSA	TH RS LA CE PR ND SM
042	KOOTS	MO WO CU PB ZN
043	NITE	MO WO CU ZN
044	ROYER LAKE	FE MA
045	PARSNIP RIVER	AU PT AG
046	GLENN	LS
047	SPARKY	LS
048	LST	LS
049	SEBEN	GA

### COMMODITY LEGEND

CODE INDEX	COMMODITY INDEX
AG	Silver
AU	Gold
BN	Bentonite
CE	Cerium
CL	Copper
CU	Copper
CR	Iron
FE	Iron
LA	Lanthanum
LS	Limestone
MA	Magnetite
MO	Mica
MO	Molybdenum
ND	Niobium
PP	Phosphate
PB	Lead
PT	Platinum
PR	Praseodymium
RS	Rare Earths
SI	Silica
SM	Samarium
TH	Thorium
VA	Vanadium
VO	Tungsten
ZN	Zinc
GA	Garnet
BN	Bentonite
CE	Cerium
CL	Copper
AU	Gold
FE	Iron
LA	Lanthanum
LS	Limestone
MA	Magnetite
MO	Mica
MO	Molybdenum
ND	Niobium
PP	Phosphate
PR	Praseodymium
RS	Rare Earths
SM	Samarium
SI	Silica
AG	Silver
TH	Thorium
VA	Vanadium
VO	Tungsten
ZN	Zinc