

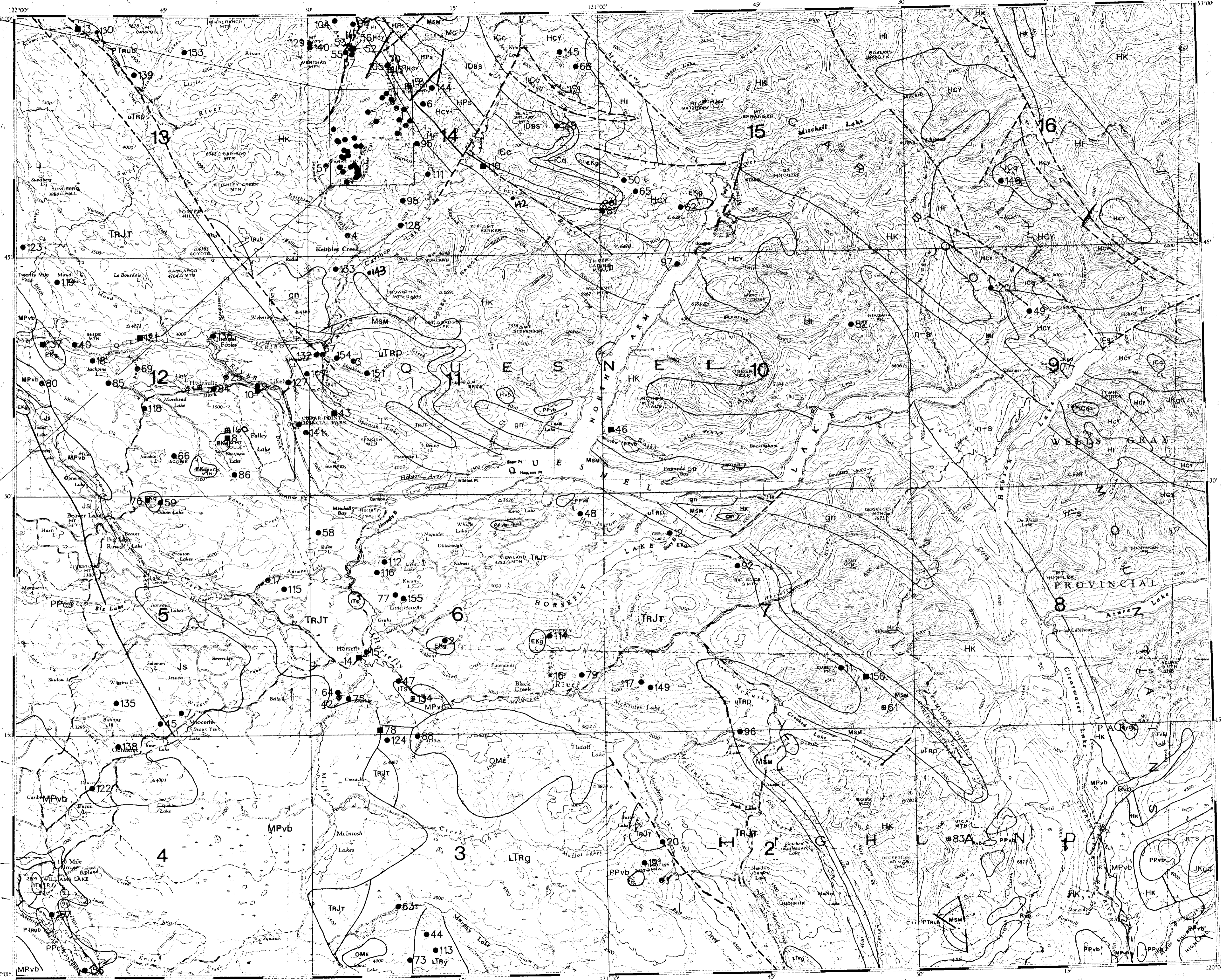
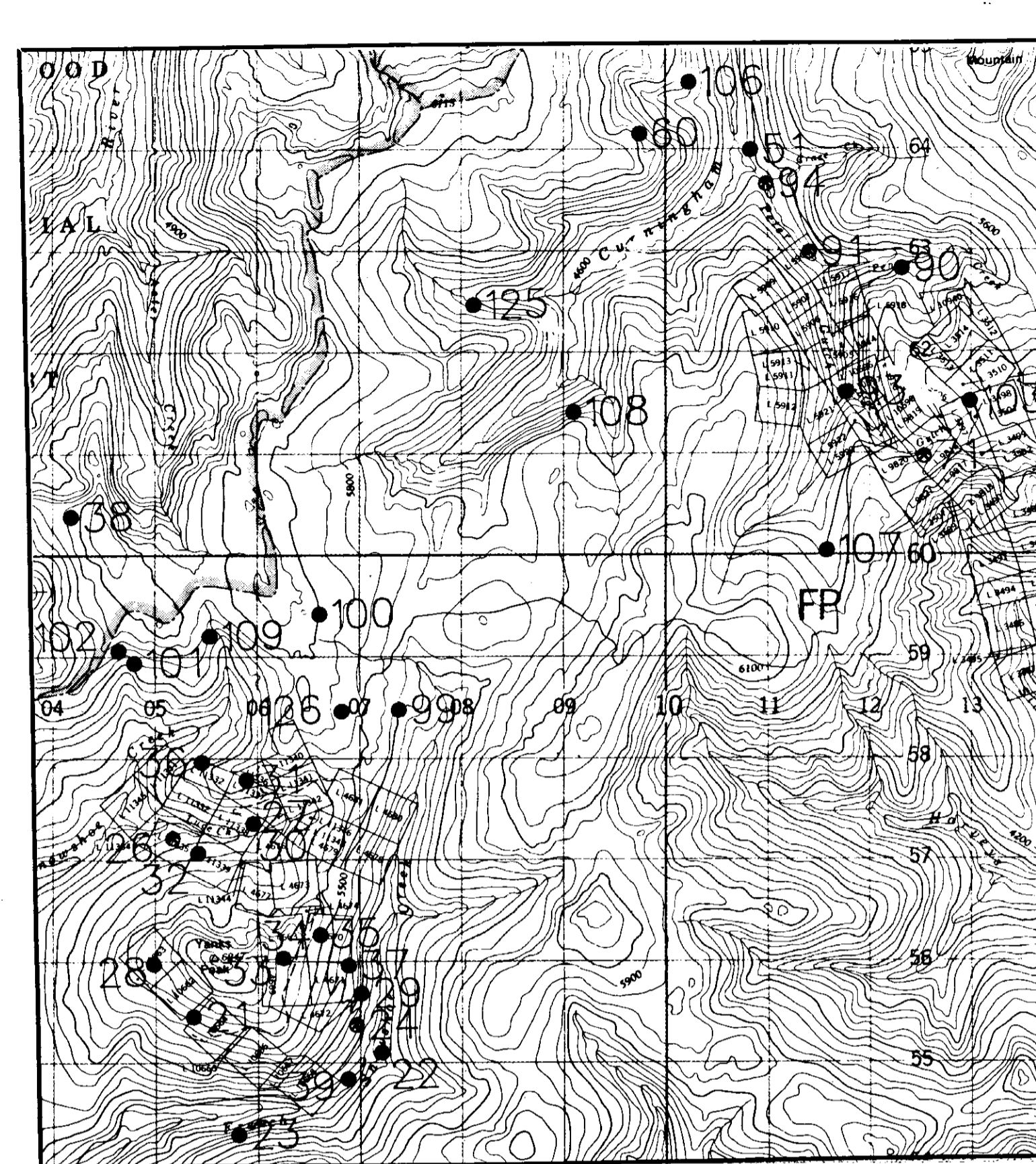
GEOLOGICAL LEGEND
STRATIFIED ROCKS

- QUATERNARY RECENT**
Rvb Basalt flows, breccia, cinder cones
- TIERTIARY AND QUATERNARY PLOCENE AND PLEISTOCENE**
PPvb Olivine basalt, cinder cones, breccia
- TIERTIARY MIOCENE AND PLOCENE**
MPvb Olivine basalt flows, breccia, tuff
- OLIGOCENE AND MIOCENE**
OME ENDAKO GROUP: Andesite, basalt, dacite
- PALEOCENE, EOCENE, OLIGOCENE**
ItS Conglomerate, sandstone, shale, tuff, breccia
- JURASSIC LOWER AND MIDDLE JURASSIC**
JS Shale, greywacke, conglomerate
- UPPER TRIASSIC AND LOWER JURASSIC**
TRJT NICOLA OR TAKLA GROUP: Andesite, basalt, tuff, breccia, conglomerate, greywacke, shale, limestone
uTRD QUESNEL RIVER GROUP: Black phyllite, siltstone, limestone, quartzite
- MISSISSIPPIAN TO TRIASSIC**
PPcs CACHE CREEK GROUP: Ribbon chert, black argillite, limestone, gneiss
- MISSISSIPPIAN TO PENNSYLVANIAN SLIDE MOUNTAIN GROUP**
MSM Basalt, breccia, tuff, chert, argillite, sandstone, limestone, conglomerate
CROOKED AMPHIBOLITE: Chlorite schist amphibolite, serpentinite, ultramafic rocks
- Mg GUYEV FORMATION: Conglomerate, argillite, sandstone, minor basalt**
- DEVONIAN LOWER DEVONIAN**
IDBs BLACK STUART: Siliceous argillite, quartzite, limestone, chert breccia
- CAMBRIAN LOWER CAMBRIAN CARIBOO GROUP**
ICq YANKS PEAK AND MIDAS FORMATION: Quartzite, shale, phyllite
- ICc MURAL FORMATION: Limestone, dolomite, siltstone, sandstone**
- HADRYNIAN AND PALEOZOIC**
HPs Undivided sedimentary and metasedimentary rocks of Hadrynian to Lower Devonian age
- HADRYNIAN CARIBOO GROUP**
HCY CUNNINGHAM AND YANKEE BELLE FORMATIONS: Limestone, dolomite, shale, quartzite
- HI ISAAC FORMATION: Phyllite, schist, sandstone, conglomerate, limestone**
- KAZA OR SNOWSHOE GROUPS**
HK Sandstone, conglomerate, grit, phyllite, schist, quartzite, amphibolite, marble, gneiss

PLUTONIC ROCKS

- CRETACEOUS EARLY CRETACEOUS**
EKg NAPER INTRUSIONS: Quartz monzonite, syenite, monzonite, granodiorite, diorite
- JURASSIC AND/OR CRETACEOUS**
JKgd Granodiorite, quartz diorite, minor granite
- TRIASSIC LATE TRIASSIC**
LTRg TAKOMKANE BATHOLITH and bodies of similar age and lithology: granodiorite, quartz diorite, quartz monzonite
- PERMIAN AND/OR TRIASSIC PERMIAN TO MIDDLE TRIASSIC**
PTRub TREMBLEUR INTRUSIONS: And similar bodies: peridotite, dunite, pyroxenite, serpentinite
- AGE UNKNOWN**
gn QUESNEL LAKE GNEISS: Aegon granite, gneissic biotite granodiorite, calc-silicate gneiss
- SHUSWAP METAMORPHIC COMPLEX**
n-s Sillimanite gneiss and schist, granitoid gneiss, pegmatite, amphibolite, marble

Geological legend and base derived from:
Tipper, H.W., R.B. Campbell, G.C. Taylor and D.F. Stott (compilers) (1974): Parsnip River, Sheet 32, Geological Survey of Canada, Map 1424A, 1:1,000,000
Campbell, R.B. (1982): Quesnel Lake (East Half); Geological Survey of Canada, Map 42-1981, 1:253,440
Campbell, R.B. (1981): Quesnel Lake (West Half); Geological Survey of Canada, Map 3-1981, 1:253,440



MAP LEGEND 093A

MINFILE NUMBER	MINFILE NAME	COMMODITIES	MINFILE NUMBER	MINFILE NAME	COMMODITIES	MINFILE NUMBER	MINFILE NAME	COMMODITIES
001	ROSS MOUNTAIN	NO CU ZN MO AG BI	076	HOVAT	CU	100	JAMBORE	AU CU
002	PINE	CU AU	077	F.S.	AG PB ZN AU	101	FRANKFOLD	AU AG CU ZN PB
003	PROUDENCE	AG PB ZN AU	078	KAHANE LAKE	AU	102	BIG	AG AU PB
004	KEITHLEY CREEK	AU	079	MEGARUCKS	AU	103	TRUMP	AG PB CU
005	LETTICE SNOWSHOE CREEK	SI	080	MURDER GULCH PLACER (PL.7139)	AU	104	CALEW	AG PB CU
006	CARIBOO QUARTZITE	SI	081	PAKESONG LIMB	ZN	105	RESERVE	CU AU HG
007	WIGGINS CREEK	CU	082	GREEN ICE	ZN	106	ST. HILL HOUSE	WM HG
008	CARIBOO-BELL	CU AU	083	MICH MOUNTAIN	MA AU	107	ST. JOSEPH'S MISSION	MT
009	PINE 9	CU	084	LIKELY MAGNETITE	CU AG PT	108	HANNINGHAM-GALEN SWAYNE	BA
010	RED ROCK 5	CU	085	MALD CREEK PLACER	CU AG PT	109	VIC. SWAYNE	BA
011	ER	CU	086	BATHSHOE	CU ZN	110	LELTOP-NORWICH	CU AU
012	ZED	CU	087	WOOD	CU ZN	160	ANTLER CREEK	AU
013	SOVEREIGN CREEK	TC KA NI AG ZN AU	088	MOORE	CU			
014	WIDENE	AU	089	SKARN	AG AU CU PB ZN MO			
015	MADON'S HORSEFLY	AU	090	FORB	AU AG PB ZN MO			
016	BLACK CREEK	AU	091	PETER GULCH	AG PB ZN			
017	ANTICME CREEK	CU	092	INTERNATIONAL	AG PB ZN			
018	SILVER BOSS	CU PB ZN	093	TIMBER LINE	AG PB ZN			
019	GUR	CU	094	CARIBOO SCHELLITE	AG PB ZN			
020	GUS	CU	095	STYVAIN D'OR	AG AU PB			
021	CORBAN	AU	096	PLATEAU D'OR	AG AU PB			
022	HONESTAKE	AU	097	CORNISH LEDGES	AG AU PB			
023	SOCKET	AU	098	HERSON VEIN	AG AU PB ZN			
024	FRENCH SNOWSHOE CREEK	AU	099	TAYLOR TUNSTEN	AG AU PB ZN			
025	BILLOM PIT	AU	100	BRADLO	AG AU PB ZN			
026	LUCE CREEK	AU	101	ANTLER MOUNTAIN	AG AU PB ZN			
027	JANE (L. 11337)	AU	102	ROBERT MOUNTAIN	AG AU PB ZN			
028	TALBOT VEINS	AU	103	CANADIAN	AG AU PB ZN			
029	ARMAD	AU	104	MURDER GULCH	AG AU PB ZN			
030	WEST	AU	105	MAYBE	AG AU PB ZN			
031	BERTHA	AU	106	STYVAIN/LANGIS	AG AU PB ZN			
032	BETTY (L. 11335)	AU	107	HOOK	AG AU PB ZN			
033	MADON (L. 4468)	AU	108	TAREY	AG AU PB ZN			
034	LIPSEY VEIN	AU	109	BM	AG AU PB ZN			
035	MIDAS (L. 4420)	AU	110	MB	AG AU PB ZN			
036	BOULDER LEDGE	AU	111	ML	AG AU PB ZN			
037	EMERALD	AG AU PB ZN	112	MUD	AG AU PB ZN			
038	HOLMES LEDGE	AG AU PB ZN	113	BLU LEAD	AG AU PB ZN			
039	MORNE CHESTO	AG AU PB ZN	114	OPAL	AG AU PB ZN			
040	SLIDE	CU	115	OPAL	AG AU PB ZN			
041	MELLON LODGE	CU	116	OPAL	AG AU PB ZN			
042	HORSON'S HORSEFLY	CU AG AU PB ZN	117	OPAL	AG AU PB ZN			
043	BOY	CU	118	OPAL	AG AU PB ZN			
044	CLEO	CU	119	OPAL	AG AU PB ZN			
045	ELK RIDGE	CU	120	OPAL	AG AU PB ZN			
046	EGLET	FL AG ZN PB MO SR	121	OPAL	AG AU PB ZN			
047	MO	CU	122	OPAL	AG AU PB ZN			
048	LO	AU	123	OPAL	AG AU PB ZN			
049	JOY	CU	124	OPAL	AG AU PB ZN			
050	LAW	CU	125	OPAL	AG AU PB ZN			
051	LIBERTIAN	CU	126	OPAL	AG AU PB ZN			
052	GISSO	CU	127	OPAL	AG AU PB ZN			
053	PIT I	CU	128	OPAL	AG AU PB ZN			
054	SPITFIRE	CU	129	OPAL	AG AU PB ZN			
055	ONE	CU	130	OPAL	AG AU PB ZN			
056	CARIBOO CANYON	CU	131	OPAL	AG AU PB ZN			
057	LITHEAN	CU	132	OPAL	AG AU PB ZN			
058	SHIKO	CU	133	OPAL	AG AU PB ZN			
059	LEW	CU	134	OPAL	AG AU PB ZN			
060	PARK	CU	135	OPAL	AG AU PB ZN			
061	ROSE	CU	136	OPAL	AG AU PB ZN			
062	SIL	CU	137	OPAL	AG AU PB ZN			
063	BOBY	CU	138	OPAL	AG AU PB ZN			
064	RED	CU	139	OPAL	AG AU PB ZN			
065	JOY	CU	140	OPAL	AG AU PB ZN			
066	PANISH CREEK	CU	141	OPAL	AG AU PB ZN			
068	MOOREHEAD CREEK	CU	142	OPAL	AG AU PB ZN			
070	VIC	CU	143	OPAL	AG AU PB ZN			
071	CARIBOO-HUDSON	CU	144	OPAL	AG AU PB ZN			
072	JOY	CU	145	OPAL	AG AU PB ZN			
073	S.S.	CU	146	OPAL	AG AU PB ZN			
074	HOSON	CU	147	OPAL	AG AU PB ZN			

COMMODITY LEGEND

CODE (INDEX)	COMMODITY	COMMODITY (INDEX)	CODE
AB	Asbestos	Asbestos	AB
AC	Silver	Barite	BA
AG	Gold	Blasph	BL
BA	Barite	Coal	CU
BI	Bismuth	Copper	CU
BL	Blasph	Fluorite	FL
CA	Coal	Gemstones	GS
CU	Copper	Gold	AU
FL	Fluorite	Hydrogrenesite	HG
GS	Gemstones	Limestone	LS
AU	Gold	Magnetite	MT
HG	Hydrogrenesite	Magnetite	MT
LS	Limestone	Mica	MI
MT	Magnetite	Molybdenum	MO
MI	Mica	Nickel	NI
MO	Molybdenum	Nickel	NI
NI	Nickel	Platinum	PT
PT	Platinum	Silica	SI
SI	Silica	Silver	AC
AC	Silver	Strontium	SR
SR	Strontium	Talc	TA
TA	Talc	Vanadium	VA
VA	Vanadium	Volcanic Ash	VO
VO	Volcanic Ash	Zinc	ZN
ZN	Zinc	Zirconium	ZR
ZR	Zirconium		

Province of British Columbia
Ministry of Energy, Mines and Petroleum Resources
MINFILE MAP 093A
QUESNEL LAKE
MINERAL OCCURRENCE MAP
Scale 1:250 000

This project is a contribution to the Canada/British Columbia Mineral Development Agreement 1985-1990.
Province of British Columbia Ministry of Energy, Mines and Petroleum Resources
Energy, Mines and Resources Canada
DATE REVISED: SEPTEMBER 1989
DATE UPDATED: MAY 1990
TOTAL NUMBER OF OCCURRENCES: 150

- STATUS**
- Producer
 - Past Producer
 - Developed Prospect
 - Prospect
 - Showing

