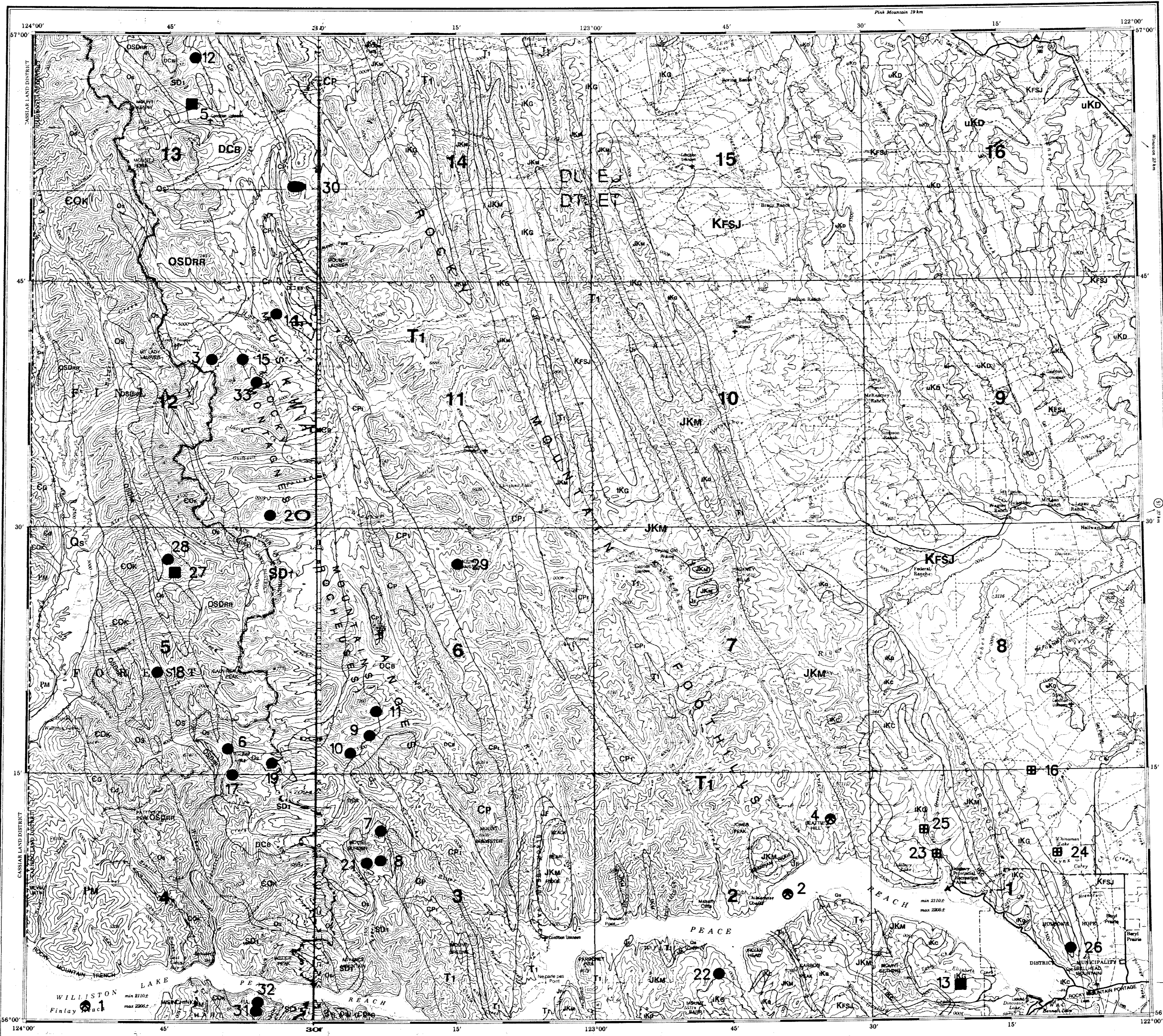


# GEOLOGICAL LEGEND

- CENOZOIC**  
**TERTIARY AND QUATERNARY**  
 PLEISTOCENE AND RECENT  
 Qs Gravel; sand; silt; clay; till
- MESOZOIC**  
**CRETACEOUS**  
 UPPER CRETACEOUS  
 uKd DUNVEGAN FORMATION: Sandstone; shale; minor conglomerate  
 UPPER AND LOWER CRETACEOUS  
 KfsJ FORT ST. JOHN GROUP: Shale; sandstone; siltstone  
 LOWER CRETACEOUS  
 iKg BULLHEAD GROUP (iKg and iKc)  
 iKc GETHING FORMATION: Sandstone; minor shale; coal; conglomerate  
 iKc CADOMIN FORMATION: Massive conglomerate; conglomeratic sandstone  
**JURASSIC AND CRETACEOUS**  
 JkM MINNES GROUP: Sandstone; shale  
**JURASSIC**  
 Jf FERNIE FORMATION: Phosphatic and sideritic shale; siltstone; minor sandstone  
**TRIASSIC**  
 T1 TOAD, GRAYLING, LIARD, CHARLIE LAKE, BALDONNEL, PARDONET AND LUDINGTON FORMATIONS: Siltstone; limestone; dolostone; sandstone
- PALEOZOIC**  
**CARBONIFEROUS AND PERMIAN**  
 CP1 STODDART GROUP, KINDLE AND FANTASQUE FORMATIONS: Shale; sandstone; limestone; siltstone; chert
- CARBONIFEROUS**  
 LOWER CARBONIFEROUS  
 Cp PROPHET FORMATION: Limestone; dolostone; chert; shale; siltstone  
 DEVONIAN AND CARBONIFEROUS  
 UPPER DEVONIAN TO LOWER CARBONIFEROUS  
 DCa BESA RIVER FORMATION: Shale; calcareous shale and siltstone; siltstone; limestone
- SILURIAN AND DEVONIAN**  
 SD1 DUNEDIN, STONE, MUNCHO-McCONNELL AND NONDA FORMATIONS: Dolostone; limestone; sandstone
- ORDOVICIAN, SILURIAN AND DEVONIAN**  
 MIDDLE ORDOVICIAN TO MIDDLE DEVONIAN  
 OSDRR ROAD RIVER GROUP: Dolostone; limestone; sandstone
- ORDOVICIAN**  
 LOWER AND MIDDLE ORDOVICIAN  
 Os SKOKI FORMATION: Dolostone; limestone; dolomitic siltstone; basaltic flows; pyroclastics
- CAMBRIAN AND ORDOVICIAN**  
 UPPER CAMBRIAN AND LOWER ORDOVICIAN  
 CQk KECHIKA GROUP: Phyllitic, calcareous siltstone and shale; limestone; sandstone; minor volcanic beds
- CAMBRIAN**  
 MIDDLE CAMBRIAN  
 Cd DOLOMITE UNIT: Medium, crystalline dolostone; sandy dolomite
- LOWER CAMBRIAN**  
 Cg GOG GROUP (Quartzite Unit): Orthoquartzite; calcareous shale; silty quartzite; siltstone; shale
- PROTEROZOIC**  
 UPPER PROTEROZOIC  
 PM MISINCHINKA GROUP: Phyllitic and schistose pelite; quartzite; limestone; dolostone

Geological legend and base derived from:  
 Thompson, R.L. (1988): Halfway River, British Columbia (094B); Geological Survey of Canada, Map 1004A, scale 1:250 000



Geological Survey Branch  
**MINFILE MAP**  
**NTS 094B**  
**HALFWAY RIVER**  
 This MINFILE release researched and compiled by:  
 Fox Geological Consultants Ltd., G.J. Payie,  
 E. Van Der Flier-Keller and G. Owsicki  
 Date Revised: March 1992  
 Scale 1:250 000

**Total Number of Mineral Occurrences: 33**

Status	094 F	094 G	094 H
Producer	094 C	094 B	094 A
Past Producer			
Developed Prospect			
Prospect			
Showing			

**MAP LEGEND - 094B**

MINFILE NUMBER	NAME	COMMODITIES
001	PETE TOYS BAR	AU PT
002	BRANHAM FLATS	AU PT
003	REEF	ZN PS AG
004	PEACE RIVER	AU PT
005	ROBB LAKE	ZN PS
006	WL	ZN PS CU
007	POCO	PB ZN
008	CORAL	ZN PS
009	NABE	ZN PS
010	VAND	ZN PS AG CU CD
011	DEV	ZN PS
012	RON	ZN PS
013	EAST MOUNT GETHING	CL
014	MARINI T	ZN PS
015	FERRIS	ZN PS
016	FARRELL CREEK	ZN PS
017	ZRR	ZN PS
018	OSPIKA	ZN PS
019	CYN	ZN PS
020	HALFWAY RIVER	ZN PS
021	CORAL #2	ZN PS
022	CARBON CREEK NORTH	ZN PS
023	DUNLEVY	ZN PS
024	WILLISTON (EAST BLOCK)	ZN PS
025	WILLISTON (WEST BLOCK)	ZN PS
026	BULLHEAD MOUNTAIN	ZN PS
027	ALEY	PP RS CE ND LA TH SR BA
028	ALEY DYKES	PP RS
029	MOUNT LUDINGTON	PP RS
030	LAURIER PASS	PP RS
031	NICK	PB ZN
032	PEACE	PB ZN
033	SMITH	ZN PS

**COMMODITY LEGEND**

CODE INDEX	COMMODITY INDEX
AG	Silver
AU	Gold
BA	Baryte
CD	Cadmium
CE	Cerium
CL	Coal
CU	Copper
DO	Dolomite
FE	Iron
FE	Iron
DO	Dolomite
LA	Lanthanum
ND	Neodymium
NB	Niobium
NI	Nickel
PP	Phosphate
PT	Platinum
RS	Rare Earths
SR	Strontium
TH	Thorium
ZN	Zinc