

# GEOLOGICAL LEGEND

## LAYERED ROCKS

### UPPER CRETACEOUS

#### SUSTUT GROUP

- KW **WAPITI FORMATION:** conglomerate, fine to coarse-grained sandstone, carbonaceous shale and coal.
- Kk **KOTANELEE FORMATION:** dark grey marine shale, minor sandstone.
- KD **DUNVEGAN FORMATION:** massive conglomerate, fine to coarse-grained sandstone, carbonaceous shale (marine and non-marine).

### CRETACEOUS

#### FORT ST. JOHN GROUP

- KSu **SULLY FORMATION:** dark grey marine shale, sideritic (marine, includes Upper Cretaceous beds at top).
- Kb **BUCKINGHORSE FORMATION:** dark grey marine shale, siltstone, sideritic concretions, minor sandstone (marine).
- Kl **LEPINE FORMATION:** sideritic rusty weathering shale.
- KS **SCATTER FORMATION (undivided):** sandstone.
- KSr **SCATTER FORMATION (Tussock Member):** grey sandstone, siltstone, shale.
- KSw **SCATTER FORMATION (Wildhorn Member):** concretionary shale.
- KSp **SCATTER FORMATION (Bulwell Member):** glauconitic sandstone and siltstone.
- KCa **GARBUTT FORMATION:** sideritic rusty weathering shale.

### TRIASSIC

- TLu **LUDINGTON FORMATION:** dolomitic siltstone, light grey limestone, dark grey limestone. Includes Baldonnel and Pardonet formations.
- TL **LIARD FORMATION:** orange brown dolomitic and calcareous sandstone, siltstone, minor limestone.
- Tt **TOAD FORMATION:** dark grey calcareous siltstone and shale, minor fine-grained sandstone, minor limestone.
- Tg **GRAYLING FORMATION:** silver grey locally calcareous shale, basal fine-grained sandstone.

### PERMIAN

- Pr **FANTASQUE FORMATION:** dark grey chert.
- Pk **KINDLE FORMATION:** grey-brown, fine-grained calcareous sandstone, siltstone, dark grey shale.

### MISSISSIPPIAN

- Mm **MATTSON FORMATION:** fine and medium-grained quartzose sandstone, sandy shale.

### UPPER DEVONIAN

- Db **BESA RIVER FORMATION:** black, siliceous shale, minor sandstone and pebble conglomerate, barite.

### DEVONIAN

- Dd **DUNEDIN FORMATION:** medium grey, well-bedded fine-grained limestone, minor calcarenite, rare dolostone (marine).
- Ds **STONE FORMATION:** light grey, very finely crystalline dolomite, dolomite breccia, dolostone, dolomitic quartz sandstone, quartz sandstone, medium to thick bedded ochre.
- Dw **WOKKPASH FORMATION:** yellow weathering, fine-grained sandstone, dolomite, siltstone, minor solution breccia.
- Dm **MUNCHO-McCONNELL FORMATION:** medium grey finely crystalline dolostone, sandy dolostone, minor shale and sandstone (marine, may include Upper Silurian beds near base).

### SILURIAN

- Sn **NONDA FORMATION:** dark grey, medium crystalline cherty dolostone, sandstone, minor limestone, minor white orthoquartzite.

### ORDOVICIAN

#### KECHIKA GROUP

- Ok **Light grey limestone, argillaceous limestone (marine).**

### CAMBRIAN

#### ATAN GROUP

- Cs **Red weathering coarse conglomerate, sandstone, minor limestone.**

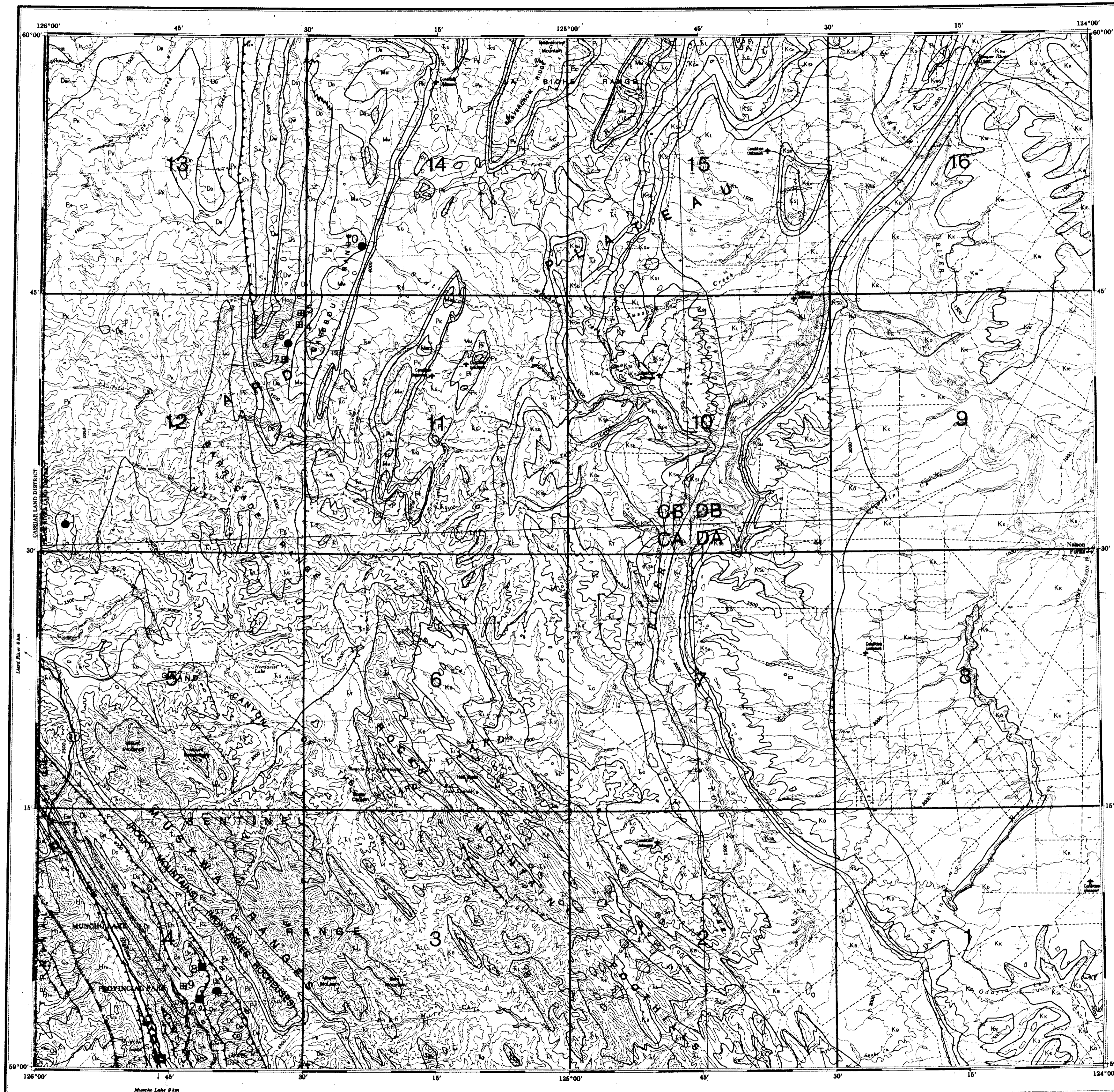
### HELIKIAN

- Htu **TUCHODI FORMATION:** dolomite, dolomitic siltstone, sandstone, shale.

Geological map and legend extracted from:

MacInyre, D., Legun, A., Bellefontaine, K., and Massey, N., 1995, Geological Compilation, Northeast B.C. (NTS 94A, B, C, F, G, H, I, J, K, N, O, P); B.C. Ministry of Energy, Mines and Petroleum Resources, Open File 1995-6, 1:250 000.

Positions of all geological contacts are approximate. In the case of an apparent disagreement between an occurrence's geological location on the map and its stratigraphic setting given in the MINFILE documentation, the latter should be given priority.



Ministry of Energy, Mines and Petroleum Resources

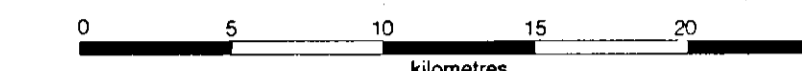


## Geological Survey Branch MINFILE MAP NTS 094N TOAD RIVER

This MINFILE release researched and compiled by:  
C.J. Rees

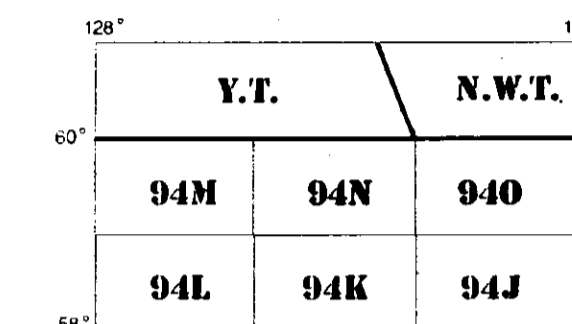
Date Revised: March 1995

Scale 1:250 000



Total Number of Mineral Occurrences: 10

- W Producer
- P Past Producer
- D Developed Prospect
- M Prospect
- Showing



### MAP LEGEND - 094N

MINFILE NUMBER	NAME	COMMODITIES
001	WISHING WELL	RD RA UR RN HS
002	BY	BA
003	SNOW	FL
004	DAN 32	FL
005	DAN 6	FL BA
006	DAN 39	FL
007	DAN 48	FL
008	MO	BA
009	MUN	BA
010	SCAT	ZN AG PB FL BA

### COMMODITY LEGEND

CODE INDEX	COMMODITY INDEX
AG	Silver
BA	Barite
FL	Fluorite
HS	Hot Spring
PB	Lead
RA	Radium
RD	Lead
RM	Radioactive Material
UR	Uranium
ZN	Zinc
BA	Barite
FL	Fluorite
HS	Hot Spring
PB	Lead
RA	Radium
RD	Lead
RM	Radioactive Material
UR	Uranium
ZN	Zinc