

A Guide to Locating Mineral-related Information in B.C.

*Article from Exploration and Mining in British Columbia 1998, pages E-1 - E-9
by Larry D. Jones, Senior Geologist, MINFILE*

[See also the Summary Guide on One Page](#)

SUMMARY

During the last few years the Internet has given users the power to access a multitude of linked information sources. The Internet facilitates low cost distribution and quicker availability of our mineral inventory data. The right tool can help you effectively and efficiently retrieve mineral-related information, develop exploration strategies, conduct geoscience research, evaluate the resource potential of an area or plan for land-related decisions.

The purpose of this article is to describe and give examples of the many tools available for locating mineral-related information in British Columbia. Many of the products can be downloaded free from the Ministry of Energy and Mines website or purchased at minimal cost from Crown Publications Inc. in Victoria.

MINFILE contains geological, locational and economic information on over 12,000 metallic, industrial mineral and coal occurrences in British Columbia. [MINFILE/www](#) is a simple Internet search and report tool which accesses this database. The MINFILE/pc program is the PC-based tool for searching, viewing, updating, manipulating and extracting information from the database. MINFILE on CD-ROM contains complete text reports in searchable format. Mineral inventory maps are available in hardcopy and many geological maps are published on the Web.

The MapPlace is used for interactive viewing of MINFILE data, along with other Geological Survey Branch and Ministry databases, such as geological maps, geochemical surveys, assessment report index, mineral tenure and mineral potential.

The ARIS and Mineral Titles websites can be searched and used to obtain summary information on mineral exploration Assessment Reports and claim locations, respectively.

Several other products available are summary descriptions of map areas and mining camps; a complete table of deposits with reserves and resources; annual reviews of fieldwork and exploration; links to industry websites; and commodity and deposit type studies.

INTRODUCTION

As technology improves, the amount and complexity of information increases. Clients for mineral-related data would like to access this information quickly and easily. Using and accessing large databases is becoming easier through electronic media, such as CD-ROMs and online access (Internet), transfers (FTP) and downloads. Once relevant information is accessed, choosing the right tool can help to efficiently meet your objectives. This will enable you to put information into a meaningful context. The right tool will allow you to customize, manipulate and adapt this information to specific needs.

You may be interested in basic information on a particular deposit or you may want data on a type of mineralization in an area of B.C. You may want to update the data, add your own data, present the data in a report or table, or create a map to display the data from your query. The tools described below will help you to decide which tool to use to achieve these goals. Hints, examples and direct web links are also given for each of the tools discussed.

The tools and examples operate on a personal computer with an Internet link. A typical configuration would be a Pentium 166 Mhz or higher CPU, 64MB Ram, 4.2 GB hard drive, 8X CD-ROM, 33,600 modem, Windows 95/98, printer (laser or ink jet) and software, including Word for Windows, Excel, graphics package, Netscape or Internet Explorer browser. Plug-ins, which are free from the vendors, include the **Autodesk WHIP!** viewer (www.autodesk.com/products/whip) to view AutoCAD maps, **Adobe Acrobat Reader** (www.adobe.com/prodindex/acrobat/readstep.html) for reading PDF (Portable Document Format) files and **Autodesk MapGuide Viewer** (www.autodesk.com/products/mapguide) to use with The MapPlace.

The Ministry of Energy and Mines has recently moved its website to www.em.gov.bc.ca/geology; it was formerly at www.ei.gov.bc.ca/geology. You can get to the Internet addresses in this article by browsing the Ministry website or directly entering the address into the URL (Universal Resource Locator) window of your browser. Remember to bookmark your favourite sites.

YOUR TOOLS

MINFILE Searches On The Web (www.em.gov.bc.ca/mining/Geolsurv/Minfile - MINFILE/www)

[MINFILE/www](http://www.em.gov.bc.ca/mining/Geolsurv/Minfile/minfwww.htm) is a simple Internet search and report tool to access the current database of all mineral occurrences in the province. Simple queries include MINFILE Name, Number, NTS map location, Status, Commodity and Deposit Type. Results are reported in a table format and each occurrence is linked to a Capsule Geology and Bibliography Report. Every search result is linked to The MapPlace website where the data can be displayed in a map format. Results can be progressively queried and a list of occurrences can be saved to a file. This file can be imported into MINFILE/pc and the many report and extract features of this PC-based software can be used. Production and Inventory reports, file extracts, and links to the Assessment Report Index are being added this year to [MINFILE/www](http://www.em.gov.bc.ca/mining/Geolsurv/Minfile/minfwww.htm).

You can use MINFILE/www to answer questions such as: show me all the gold producers in B.C.; give me the information on the Red Bird occurrence in 092H; give me a list on developed prospects with Au skarn deposit type and containing silver. Partial names can also be searched. For example, to find Mt. Polley, enter a wildcard before part of the name, i.e. %poll.

If your browser is setup with the MapGuide plug-in, when you select the longitude/latitude field, a MapGuide window opens with the map centred on the selected MINFILE occurrence. You can manually turn on the MINFILE Status layer, and other layers, using the MapGuide legend. While you are at The MapPlace website, you can go directly to the MINFILE report for an occurrence by double-clicking on the point. See the section below for more information on The MapPlace or visit the website.

While in MINFILE/www you can quickly call up specific MINFILE Numbers. In the Capsule Geology and Bibliography report, you can edit the URL location to retrieve the same report on another MINFILE Number. Simply change the 9-digit MINFILE Number at the end of the URL script. Remember to add ++ for the two spaces in MINFILE numbers without NE, NW, SE, SW, use all CAPITAL letters, and include the '0' for NTS 082, 083, 092, 093 and 094. For example, the following URL address will retrieve the report for Eskay Creek: www.em.gov.bc.ca/cgi-shl/dbml.exe?template=/mf/search/search&mode=capbib&minfilno=104B++008. You can bookmark this address and then edit the last 9 characters to go directly to a new MINFILE report. For example, changing 104B++008 to 092INE038 will take you to the Getty North deposit report.

A few industry web page links are listed in the MINFILE bibliography, with the designation WWW. You can cut and past the URL script into your browser to go to the Company website. See the section called [Industry Web Links in MINFILE](#) and [1998 Mines Directory](#) below for access to industry websites.

If you want quick access to prevalent parts of the MINFILE data, using commonly requested queries, pay a visit to [MINFILE/www](http://www.em.gov.bc.ca/mining/Geolsurv/Minfile/minfwww.htm).

MINFILE/pc, Manuals and Data (www.em.gov.bc.ca/mining/Geolsurv/Minfile/minfpc.htm)

The MINFILE/pc program is the desktop computing tool for searching, viewing, updating, manipulating and extracting information. It is a FoxPro DOS application than can run as a DOS application in a Window on your computer.

MINFILE/pc, through 12 menu-driven screens, enables you to search the MINFILE Database on a variety of exploration and/or geological parameters. MINFILE/pc can send the data, in 12 formatted reports, to the screen, a file or a printer for viewing. The data-entry function allows you to alter or add data to the MINFILE database. The data can be easily transferred between computers and exported for use in other programs and mapping packages. MINFILE/pc can be ordered free of charge or downloaded. Help Desk support is available from the MINFILE Project Staff. You can find the most common questions, problems, and solutions for using MINFILE/pc at our Frequently Asked Questions (FAQ) site at: www.em.gov.bc.ca/mining/Geolsurv/Minfile/manuals/user/appdxk.htm.

Recent program features include: handling of location data in both NAD 27 and NAD 83 datums; output files and reports display either datum; new region fields; the ability to enter world-wide locations; new extract files, in ASCII, dBASE and Worksheet formats; and longitude/latitude in decimal degrees. System configuration changes include the ability to modify Code Tables; select your own text editor; select datums; specify coordinate working areas; and password security to restrict access to read-only.

If you want access to all the data, have powerful searching capability, have flexible reporting and exporting, or modify and add data, use MINFILE/pc. You may want to add deposits from areas outside B.C., such as a group of deposits from the Yukon. The Region table can be used to tag a group of deposits for later manipulation, such as assigning the group to a particular mining camp. The Region table can be modified to add your own keywords. Using the new anomaly status, you can add geochemical or geophysical anomalies. The Exploration Projects module can be used to create your own exploration database and attach a group of deposits to a project.

Download MINFILE Data, MINFILE/pc and Manuals

To Download files, click on your choice in the File column of the Table below. NOTE: An UNZIP routine (one available from [PKWARE Inc.](#)) is required to uncompress the downloaded files.

The [MINFILE database](#) contains information on over 12,000 mineral occurrences throughout British Columbia. The database is split into [15 sets of files](#), which must be downloaded and unzipped to separate folders. The other download files ([Vancouver Island Special Edition](#) and [1998 Mines and Major Exploration Projects](#)) are intended to be used independent of the regular provincial data release on 15 disks.

The MINFILE data files must subsequently be formatted with [MINFILE/pc](#). Version 4.0 of the [User's and Coding manual](#) are available for download in Word 6.0 format.

Description	Size	File
MINFILE Data Files		
Province Data (January 1999)		
Disk No. (NTS Area)	No. Occ.	
Disk 1 (082E)	713	DISK1.ZIP
Disk 2 (082F)	941	DISK2.ZIP
Disk 3 (082G, J, K)	931	DISK3.ZIP
Disk 4 (082L, O, 083C, E)	777	DISK4.ZIP
Disk 5 (082B, C, E, F)	937	DISK5.ZIP
Disk 6 (082G, J, K)	751	DISK6.ZIP
Disk 7 (082H)	793	DISK7.ZIP
Disk 8 (082I)	570	DISK8.ZIP
Disk 9 (082L, P, 103P)	730	DISK9.ZIP
Disk 10 (083A-K)	795	DISK10.ZIP
Disk 11 (083L-P)	814	DISK11.ZIP
Disk 12 (084A-B)	843	DISK12.ZIP
Disk 13 (103A-C, F, K, O, P)	811	DISK13.ZIP
Disk 14 (104A-B, F, H)	789	DISK14.ZIP
Disk 15 (104P, 1140, P)	805	DISK15.ZIP

MINFILE/pc provides exports to other software, such as Excel and Word. Georeferenced files can be exported for use in Geographical Information Systems (GIS) and mapping systems such as ArcInfo and AutoCAD. The most useful export - the *mineral.dbf*, *reserve.dbf* and *product.dbf* files, includes a summary of the occurrence information, reserves and production. The definition of these files is found at www.em.gov.bc.ca/mining/Geolsurv/Minfile/

The User's Manual contains information on installing, operating, using, and customizing the MINFILE/pc program and database files. The appendices contain basic DOS information, code tables, the database structure, help sections and computer memory information. The MINFILE/pc V. 4.5 User's Manual (Information Circular 1997-2) is currently being updated; a draft version is available for viewing on the Web.

The Coding Manual, Version 4.5 (Information Circular 1996-5) is a guide to data specifications and codes used in MINFILE. This 110-page manual is used by geologists to input information into the database. A new version of this manual is being updated; a draft version is available for viewing on the Web. Coding Cards are

available as PDF files.

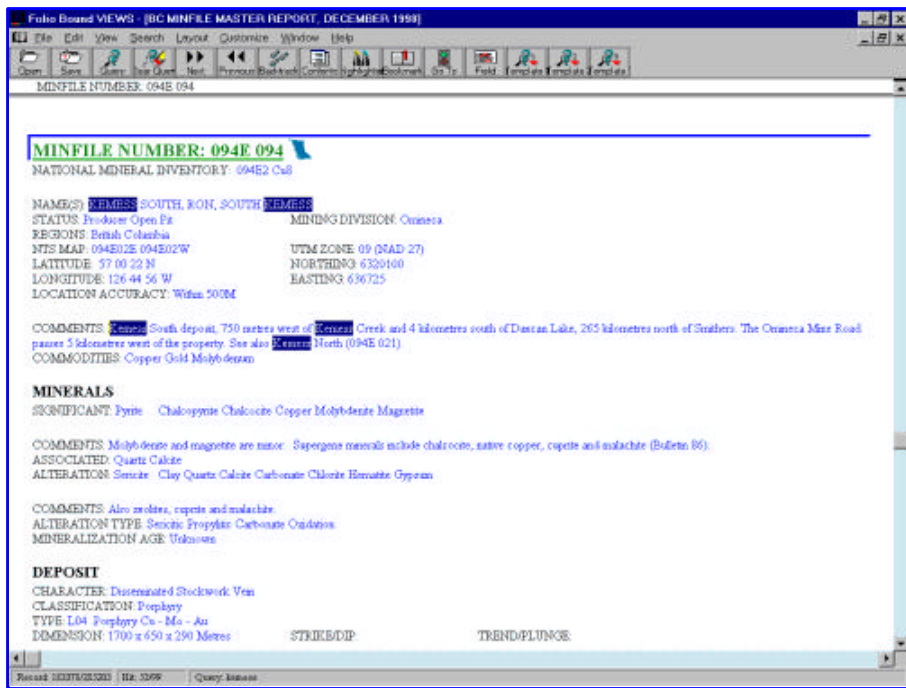
Version 4.0 (January 1996) of the User's and Coding manuals (excluding some appendices) may be downloaded from the Web or you can obtain the disk versions, which are in Microsoft Word 6.0 format, from the MINFILE staff. You can also view the manuals at: www.em.gov.bc.ca/mining/Geolsurv/Minfile/products/manuals.htm.

The complete MINFILE database of more than 12,000 metallic mineral, industrial mineral and coal occurrences is on 15 diskettes. The data includes: names; commodities; status (showings to producing mines); location (NTS map, longitude/latitude, UTM, elevation and Mining Division; mineralogy and alteration; deposit character, classification and type (based on B.C. Mineral Deposit Profiles); hostrock (lithology, stratigraphic names and ages); geological setting (tectonic belt, terrane, physiographic area and metamorphism); inventory (assays, reserves/resources and production); capsule geology and work history; and references and publications. The data disks are available for \$75.00 from Crown Publications Inc. or as a free download from www.em.gov.bc.ca/mining/Geolsurv/Minfile/minregis.htm.

BC MINFILE Reports on CD-ROM (www.em.gov.bc.ca/mining/Geolsurv/Minfile/products/cd-rom.htm)

BC MINFILE on CD-ROM is a complete record of all occurrences in B.C. in report format. Using Folio VIEWS Infobase software, you can quickly search the information stored in the MINFILE Master and Production reports. No extra software is required. With Infobase you can create customized word searches and search the text on a single term or a string of words. The program is fast, efficient and easily operated. You can also print and save to a variety of word processing formats.

The reports, encompassing almost 24,000 pages, contain all the data in MINFILE. This includes extensive information on location; mineralogy and alteration; geology and hostrocks; assay data, reserves and production records; references and other information on each occurrence. Each report also includes a text description of the geology and setting of each occurrence. The data is current to December 1998. This year's release of the CD-ROM also includes MINFILE Number and Name indexes. MINFILE/pc is used to generate the Master and Production reports from the digital MINFILE Database.



A description of the Folio VIEWS Infobase along with a tutorial and help document are available on the CD-ROM. This CD-ROM is available for \$100.00 from Crown Publications Inc. The CD-ROM was produced by Hyperborean Productions Inc. based in Whitehorse, Yukon.

If you would like to quickly access the 24,000-page report of the complete MINFILE, then the CD-ROM is for you. You can enter simple or complex queries, instantly see the number of hits, and quickly go to the result. For example, a search on the word 'tailings' results in 109 hits. A search of 'gold and tungsten and no silver' results in 62 hits. The CD-ROM is a powerful tool for searching commodity combinations and mineral assemblages. By using the Infobase query language, you can search the entire report or part of the report for single words, phrases, or word patterns. Using the query operators, you can also create relationships between words to find ideas. There are nine search templates provided, each allowing you to focus your search on a particular section of the Master Report. For example, using the Inventory category there were 26 hits of deposits with calculations reported in the year 1998.

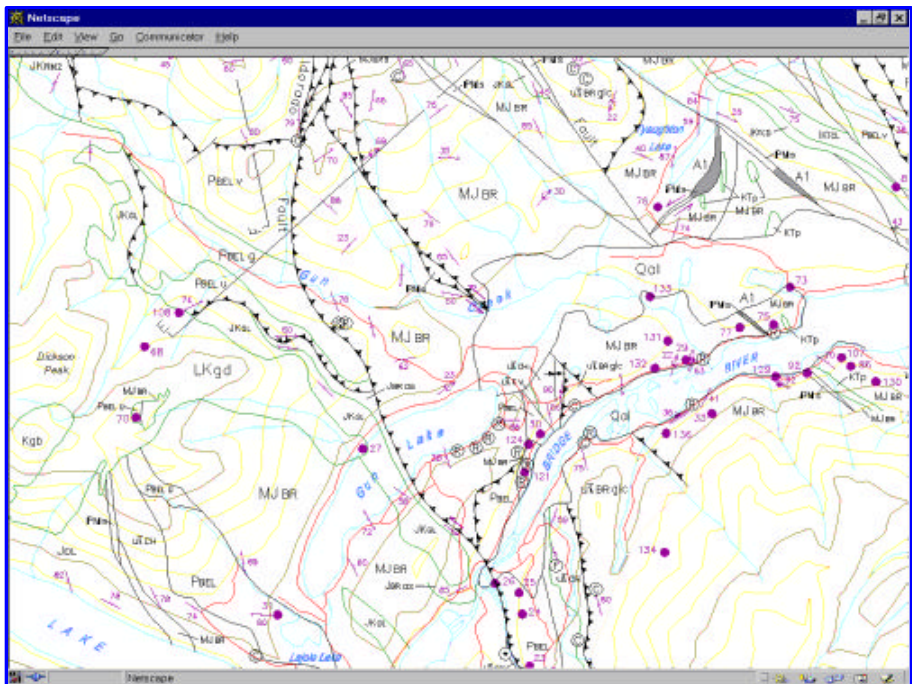
Aside from the ability to save your results as a word processing document, the CD-ROM does not allow flexible reporting and exports of your results like MINFILE/pc does. For example, a file useful for plotting cannot be created easily. However, the CD-ROM allows searching of the capsule geology and bibliography, whereas MINFILE/pc does not. MINFILE/pc uses menu-driven searches, while the CD-ROM uses a query language, which requires some understanding. The CD-ROM is particularly handy if you want a quick digital copy of a nicely formatted MINFILE report. A similar CD-ROM is available for the Yukon MINFILE.

MINFILE Maps (www.em.gov.bc.ca/mining/Geolsurv/Minfile/products/minmaps.htm)

MINFILE maps display mineral occurrences on a topography and geology base. In the map package is a summary description of the map area, including an overview map, selected references and tabular indexes. The 101 MINFILE maps are also available on microfiche for \$10.00 per set. Paper copies of the maps, which may be purchased for \$5.00 per map area, are plotted at either a 1:100,000 or 1:250,000 scale depending on the density of occurrences on the map. The fiche and maps are available from Crown Publications Inc. These maps are useful as an inexpensive portable hardcopy to quickly see the location of occurrences and to mark-up with your exploration strategies.

Geological Maps On-Line (www.em.gov.bc.ca/mining/Geolsurv/bedrock/maponline/maponline.htm)

Using the free WHIP! Plug-in, you can view geological maps on-line. WHIP! displays drawings inside your web browser using the Drawing Web Format (DWF), a lightweight vector file format that preserves the security and precision of original AutoCAD .DWG files, while ensuring the speedy display of drawings. You can zoom in, turn layers on and off and save the on-line maps as .DWF, .BMP and .DWG files. For additional information on these products, see Bedrock Mapping at: www.em.gov.bc.ca/geology/bedrock

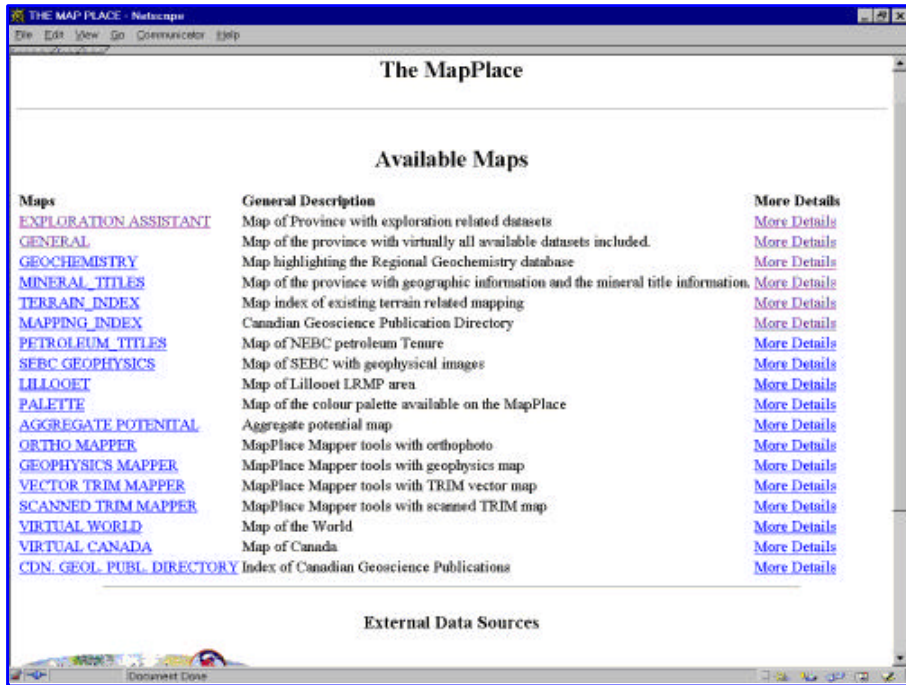


Mineral-Related Data on The MapPlace

(www.em.gov.bc.ca/geology - The MapPlace)

The MapPlace gives access to many of the BC Geological Survey Branch and other Ministry data sets. With a free plug-in (Autodesk MapGuide Viewer), you can interactively view and download datasets. You have the ability to create your own maps using these periodically updated datasets. Reports can be created from selected themes and objects. Examples of theme maps are GEOCHEMISTRY, which is a

map highlighting the Regional Geochemistry database and MINERAL TITLES, which is a map with geographic information and the mineral title information. The most common map is GENERAL, which includes virtually all available datasets.



The EXPLORATION ASSISTANT features the ability to perform detailed selections of information to display on the map. Searchable data includes: Mineral Potential Tracts; MINFILE (commodities, names, and deposit types); geology (age, lithology and terrain); and names and anniversary dates of claims. The following are examples of queries: find a particular settlement, such as Gold Creek; display areas favourable for garnet skarns; show the location of the Samatosum deposit; plot all Jade occurrences; plot the Placer deposits; zoom into an area and display Cretaceous age sedimentary rocks within any terrane; find the Tam claim; display all claims in an area with an anniversary date in the next 40 days.

With The MapPlace you can download and directly link to many of the data sources. These include Digital Geological Maps, Mineral Potential information, Mineral Titles, MINFILE, ARIS, Regional Geochemical Surveys, Geological Survey of Canada databases, map indexes, and Terrain Maps.

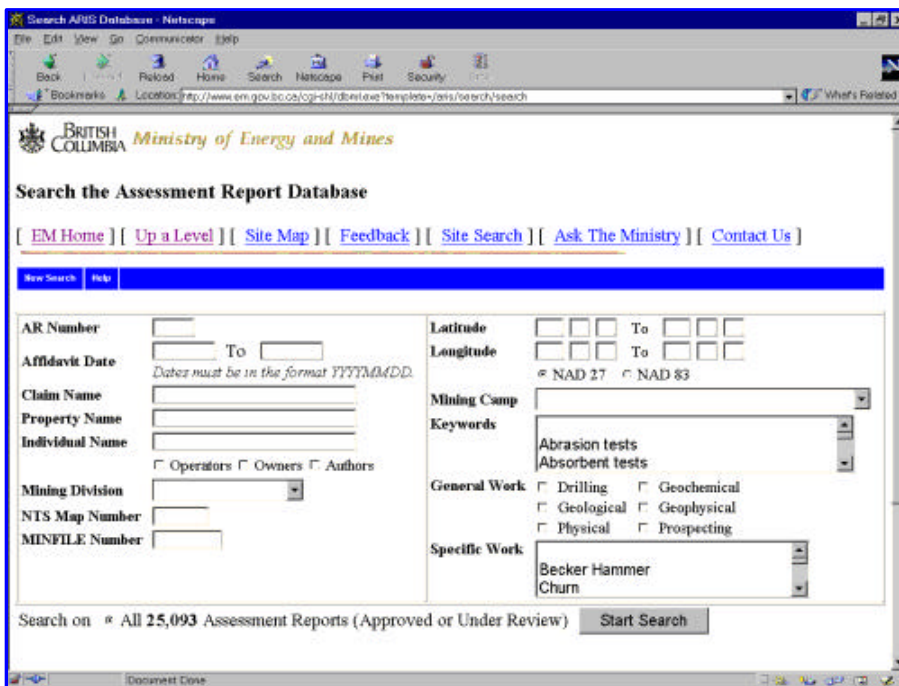
ARIS/www
[\(www.em.gov.bc.ca/mining/Geolsurv/\)](http://www.em.gov.bc.ca/mining/Geolsurv/)

The British Columbia Geological Survey Branch has approved and transferred to microfiche more than 25,500 mineral exploration assessment reports filed by the exploration and mining industry since 1947. These reports provide information on geological, geophysical, geochemical, drilling and other exploration-related activities throughout B.C. ARIS (Assessment Report Indexing System) is a computer-based system that indexes all these reports. Paper copies of the index, maps, and original and/or microfilmed assessment reports can be viewed at selected provincial government offices throughout the province. Assessment reports can be purchased as photocopies and microfiche. ARIS data can be interactive viewed along with other GSB databases at The MapPlace. To download the ARIS data free of charge see the ARIS website.

A significant addition to the ARIS website, is the ARIS/www search engine. Searches include affidavit date, claim name, mining division, property name, operators/owners/authors, NTS map number, MINFILE number, latitude/longitude, mining camp, keywords, general work such as drilling, and specific work such as silt sampling. A search will result in a table of hits. The Assessment Report number field links to a summary of that report; the NTS maps link to a location sketch map of the area; MINFILE entries, if any, link to the MINFILE Capsule/Bibliography report; and the Longitude/Latitude links to The MapPlace.

Mineral Tenure Database Search
www.em.gov.bc.ca/mining/titles

This site provides you with details on mineral tenures and Free Miners in British Columbia. Search options include tenure number, free miner, tenures owned by a person or company, tenures staked by a person, tenures on a specific map, tenure by claim name or tag number, lot by lot number and land district. You can view mineral tenures on a map at The MapPlace. Once here, double clicking on a mineral tenure will link you to the Mineral Titles complete database. The Mineral Tenure site also has links to other mineral title information, such as guides to locating mineral claims, gold commissioner's offices, information letters, Mineral Tenure Act, Coal Act, and other publications.



Geochemical Inventory (www.em.gov.bc.ca/mining/Geolsurv/geochem)

Geochemical inventories are a powerful mineral exploration tool and an important source of information for land-use and environmental assessments. This website directs you to various geochemical databases collected and maintained by the Geological Survey Branch. They include the Regional Geochemical Survey (RGS) Program, Till Geochemistry Surveys and Lake Sediment Geochemical Surveys.

The RGS program develops, maintains and disseminates a comprehensive geochemical database consisting of stream sediment, moss sediment, lake sediment, stream water and lake water analytical data plus field site observations. Data from joint Federal-Provincial reconnaissance-scale geochemical surveys have been systematically collected, compiled and published annually since 1976. You can use this high-quality baseline geochemical data to outline regional geochemical trends, assist mineral potential evaluation and aid regional metallogenic studies and geologic interpretations.

Till geochemistry surveys are targeted at regions of high mineral potential where glacial sediments cover and obscure the underlying bedrock. Till geochemical anomalies identify areas where glaciers eroded mineralized bedrock and redeposited the mineral debris in down-ice dispersal trains. They provide a cost effective target for mineral exploration programs in drift-covered terrains.

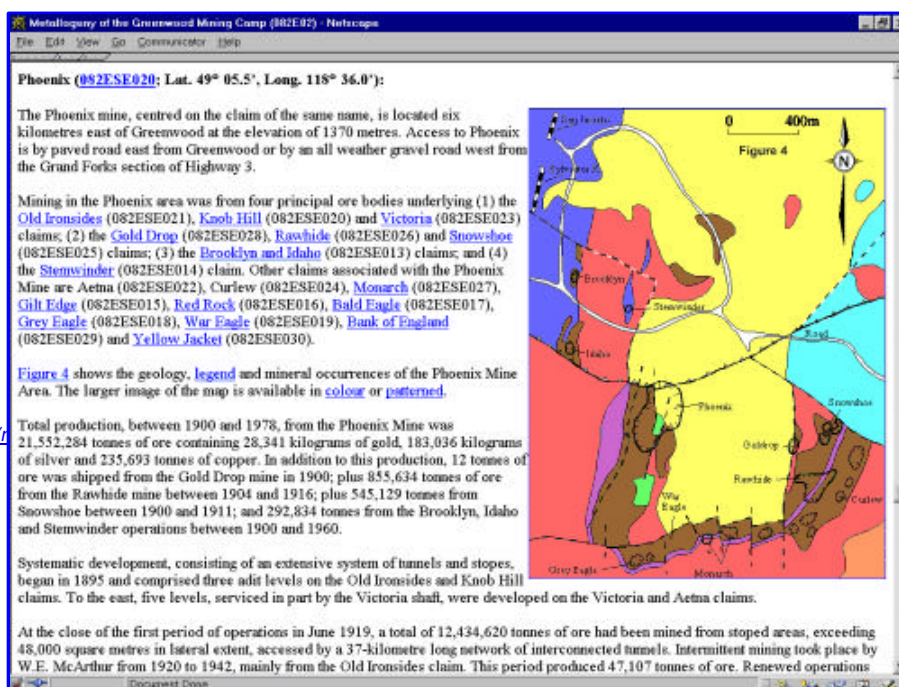
The RGS data and maps can be purchased at Crown Publications Inc. or the raw data can be downloaded from The MapPlace.

RECENT SPECIAL PRODUCTS

NTS Summary Sheets and Mining Camps (www.em.gov.bc.ca/mining/Geolsurv/Minfile/products/prodlist.htm)

The MINFILE website provides access to 88 summaries of all the NTS map areas covered by the MINFILE database. These briefly describe the geology of the map area, highlighting the significant occurrences. Most of the summaries include a list of references, geological legend and sketch map showing a plot of the occurrences. Deposits mentioned in the text are linked to the on-line capsule and bibliography report. You will find these summaries to be useful introductions to the map areas. These are updated periodically with new links.

If you are interested in mining camps in British Columbia, there are a few articles posted on the Internet. These include the Beaton-Camborne ([www.em.gov.bc.ca/mining/Geolsurv/Minfile/Bridge River \(../bridge.htm\)](http://www.em.gov.bc.ca/mining/Geolsurv/Minfile/Bridge%20River%20.htm)), Greenwood ([../greenwd.htm](http://www.em.gov.bc.ca/mining/Geolsurv/Minfile/Greenwood.htm)), Slokan City ([../slococity.htm](http://www.em.gov.bc.ca/mining/Geolsurv/Minfile/Slokan%20City.htm)), and Slokan ([../slococov.htm](http://www.em.gov.bc.ca/mining/Geolsurv/Minfile/Slokan.htm)) mining camps. These articles include mining histories, geological settings, mineral deposit descriptions, metallogeny discussions, photos, geology and underground plan sketch maps, production tables and extensive reference listings.



Vancouver Island Special Edition (www.em.gov.bc.ca/mining/Geolsurv/Minfile/products/vanisl.htm)

This disk, updated to January 1999, documents all 1421 metallic mineral, coal and industrial mineral occurrences on Vancouver Island and adjacent islands. The website shows a plot of MINFILE occurrences with links to NTS map area summaries, reference lists, and mineral occurrence plots. Included in the set are 124 occurrences described in a publication by Rick Hudson (1997): A Field Guide to Gold, Gemstones & Mineral Sites of British Columbia, Volume 1, Vancouver Island, Orca Book Publishers. This field guide describes geology and mining history of the Island, prospecting techniques, rock and mineral identification, and brief site descriptions with location maps. The Vancouver Island Special Edition disk is downloadable or is available for \$7.50 from Crown Publications Inc.

Reserves/Resources Inventory (www.em.gov.bc.ca/mining/Geolsurv/Minfile/products/res_res.htm)

This 192-page report includes a 113-page table of 808 mineral deposits in British Columbia with known reserves and resources. The inventory, which is sorted by deposit name, includes the tonnage and grade of metallic minerals, industrial minerals and coal occurrences. Data for each deposit include name, MINFILE number, geographic location, NTS map, status, mining division, deposit type, zone name, year, reference, comments, tonnage, category, grade and commodity. Various reports and sorted tables are included: a Commodity Legend, a sample Master Report, an Alphabetical Index, a MINFILE Number Index, a table of Mineral Deposit Profiles, and a Deposit Type Index. The tables were generated from MINFILE/pc V. 4.5 and reflect the status of the MINFILE database as of January 1999. This Open File is a handy hard-copy reference to British Columbia's rich mineral endowment. The annual publication is available for \$20.00 from Crown Publications Inc. Part of the report is available for viewing on the Web.

1998 Mines & Exploration Projects, Open File 1999-1 (www.em.gov.bc.ca/mining/Geolsurv/Minfile/products/mine1998.htm)

This annual publication contains 2 maps at 1:2,500,000-scale; a separate MINFILE data disk is available. The disk provides data on 117 deposits including operating mines, projects in the Environmental Assessment Review, projects that have received Mine Development Certificates, exploration highlights and advanced exploration/development projects in British Columbia. The maps show the location of each of the 117 deposits contained in the dataset.

In 1998, a total of 60 deposits (metallic mineral, industrial mineral and coal) were being mined in the province of British Columbia. Kemess South started production and Blackdome was reopened in 1998. Several small high-grade projects continue to produce, or plan to produce, using custom milling arrangements. A number of advanced projects are in the Environmental Assessment Review, with several in the pre-feasibility stage, as well as some receiving Certification or a Mine Development Certificate. The maps are available for \$10.00 and the disk for \$7.50 from Crown Publications Inc. A simplified map of Operating Mines in BC is available at: www.em.gov.bc.ca/mining/Geolsurv/general/minedir/minemap98.htm.

BC Mineral Exploration Review (www.em.gov.bc.ca/mining/Geolsurv/general/reviews)

This annual publication provides an overview of mineral exploration activities in the Province of British Columbia for a given calendar year. It contains statistical information, tables, illustrations and location maps which summarize significant exploration and development projects in the province. The report documents mineral exploration expenditures, active exploration areas and the companies involved. Exploration Review 1998 is available on the Web as a PDF document.

Geological Fieldwork 1998 (www.em.gov.bc.ca/mining/Geolsurv/Publications/freepubs/fldwk98/toc.htm)

This PDF document is an annual publication and contains reports of Geological Survey Branch activities and projects during the year. The Branch's field surveys in 1998 concentrated on under-explored frontier regions and on areas with established mining infrastructure.

1998 Mines Directory

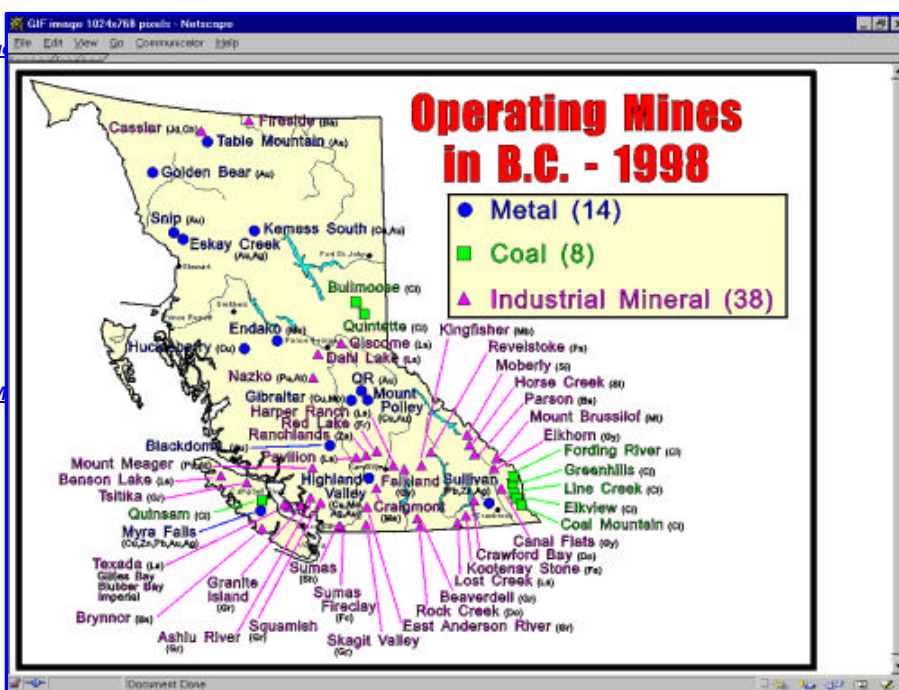
(www.em.gov.bc.ca/mining/Geolsurv/g)

This address list of active mines and companies is published yearly. The directory includes metal mines, coal mines, industrial mineral operations and mineral products. The 1998 edition on the Web contains active links to company pages and to the MINFILE database. The directory is also included with Open File 1999-1, 1998 Mines & Exploration Projects. A simplified map of Operating Mines in BC is available on the Web.

Industry Web Links in MINFILE

(www.em.gov.bc.ca/mining/Geolsurv/M)

The MINFILE Bibliography includes mining industry web links. A summary of these link are available as a table on the Web; attempts are made to keep them current. The table is sorted by MINFILE number or name, which are also linked to the Capsule Geology/Bibliography report. Good summaries of several developed deposits can be found. Currently the table links over 55 properties to industry websites.



New Occurrences in MINFILE

(www.em.gov.bc.ca/mining/Geolsurv/Minfile/updates/updates.htm)

This site tracks major updates and new additions to the MINFILE database as it changes and grows. The table will list these additions beginning from the last major publication of the database, for example Roundup in January 1999. The table includes MINFILE Number, Name, Status, Commodities, NTS Maps, Latitude, Longitude, Deposit Type and Date Added. The MINFILE number is actively linked to the Capsule Geology/Bibliography report and the latitude/longitude is linked to the occurrence location in The MapPlace. Check out this site to view the new Bear Paw Ridge, Lady Bug and Goldstrike occurrences.

Property File in Victoria (www.em.gov.bc.ca/mining/Geolsurv/Minfile/propfile.htm)

Property File contains hard-copy reports and maps that are generally unavailable elsewhere. These documents, which can be extremely valuable to researchers, typically include unpublished reports; theses and papers; field notes; company prospectuses and pamphlets; historical information; geochemistry, geophysics and drill information; claim maps, sketches of workings and photographs. Property File also contains general information on each NTS area, the National Mineral Inventory information, topographic maps and some work histories. The research material is indexed by MINFILE number and cross-referenced in the MINFILE Database. Property File may be viewed at: Ministry of Energy and Mines Library, Main Floor - 1810 Blanshard Street, Victoria, BC; Tel: (250) 952-0583.

Silver Deposits in BC, Open File 1998-10 (www.em.gov.bc.ca/mining/Geolsurv/publications/summs/of9810.htm)

This Open File briefly reviews the abundance and diversity of silver lode deposits in British Columbia. The report includes summary tables of

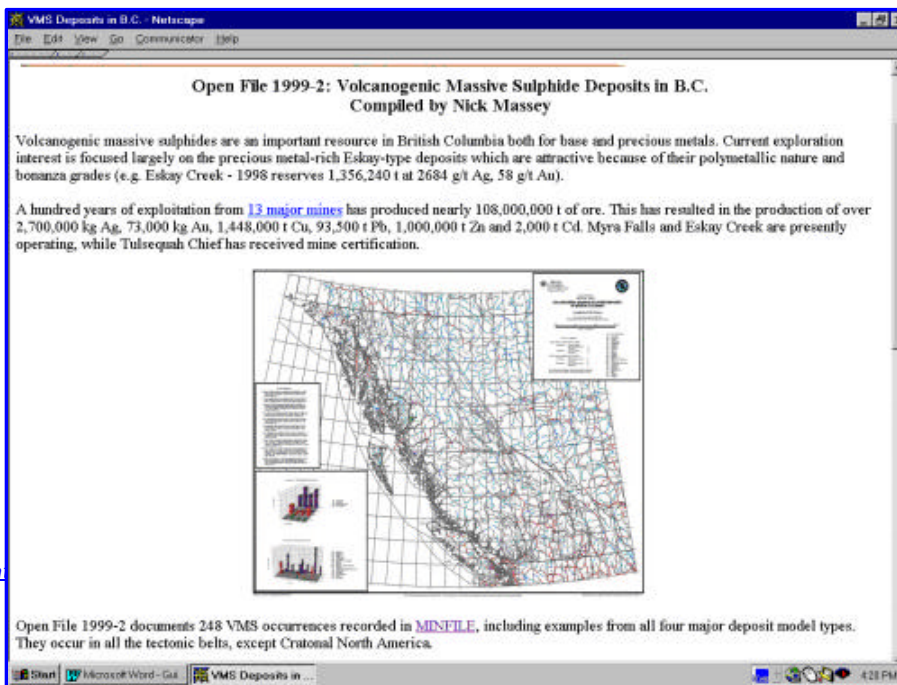
reserve and production data and deposit types for close to 300 major producers, past producers and developed prospects. The location of these deposits, their current status with respect to production, and deposit type are shown on a map.

Volcanogenic Massive Sulphide Deposits of BC, Open File 1999-2

(www.em.gov.bc.ca/mining/Geolsurv/publications/summs/of992.htm)

The map (1:2,000,000 scale) and the accompanying databases (in dBase and MS-Excel formats) document some 248 volcanogenic massive sulphide occurrences in British Columbia. The mineral occurrences are derived from MINFILE with editorial input from Geological Survey Branch staff. The mineral occurrences are classified into the following deposit types: Kuroko (173), such as Myra Falls and Tulsequah Chief; Besshi (55), such as Goldstream and J & L; Eskay (10), such as Eskay Creek; and Cyprus (10), such as the Anyox deposits. The tables provide a listing of all occurrences as well as production figures. Two charts illustrate the distribution of the four deposit types by tectonic belt and lithostratigraphic terrane.

The Open File is available from Crown Publication Inc. for \$25.00. Copies of the data files and a plotfile (~10Mb) for the map are available for download from the Web at www.em.gov.bc.ca/mining/Geolsurv/economicgeology/MetallicMinerals/vms/vms.h



Prospective Areas in BC for Intrusion-related Gold-Tungsten-Bismuth Veins, Open File 1999-3

(www.em.gov.bc.ca/mining/Geolsurv/publications/summs/of993.htm)

Gold-quartz veins related to Cretaceous age granitic intrusions in Alaska and the Yukon have created the Cordillera's latest gold rush. The initial interest was sparked by the opening of the Fort Knox open-pit mine in the Fairbanks District in Alaska and discoveries in the Yukon, such as Dublin Gulch and Brewery Creek. The discovery of the Pogo gold-quartz vein in Alaska has attracted more exploration activity. Similar mid-Cretaceous and other granitic intrusions are found in British Columbia. The map (1:2,000,000 scale) shows their locations, identifies known intrusion-related gold-tungsten-bismuth mineralization and highlights prospective areas for exploration. A diskette contains dBASE files with selected mineral occurrences. The Open File is available for \$25.00.

Mineral Deposit Profiles

(www.em.gov.bc.ca/mining/Geolsurv/economicgeology/MetallicMinerals/mdp/mdphome.htm)

The British Columbia Geological Survey has been working on descriptions of many of the mineral deposit types that can be found in the Canadian Cordillera. The descriptions (called profiles) provide concise overviews of different deposit types. You can use the profiles to review the key characteristics of different deposit types including typical examples, tectonic setting, mineralogy, alteration, genetic models, associated deposits, typical grades and tonnages and exploration guides. Sixty profiles for metal and coal deposits have been published (Open Files 1995-20 and 1996-13). Many of these are posted on the Web.

You can find a discussion on Coal in BC at: www.em.gov.bc.ca/mining/Geolsurv/economicgeology/coal. Other interesting articles at the Economic Geology website include New Mineral Deposit Models for the Cordillera, Characteristics of Gold Skarns, and Metallogeny of Volcanic Arcs (abstracts). Contact Dave Lefebure, Tel: (250) 952-0404, or visit the Web site for more information.

Web Search Engines

There are many web search engines available that can lead you to company profiles, new releases, annual reports, environmental studies and project summaries. For example a search of 'eskey creek' using *Scrub The Web* (www.scrubtheweb.com) led to a paper entitled *ARD Assessment Program from Exploration to Operation Case Studies from the Eskay Creek Mine*. And the exact phrase 'golden bear mine' gave 56 matches on *Hot Bot* (www.hotbot.com).

Custom Searches, Datasets and Support (contact MINFILE staff)

The MINFILE staff are always ready to help you with any of our programs and products. We can provide you with custom datasets and searches. Examples of past requests and inquiries include: production tables for deposits located within the Kootenay terrane; lists of copper and gold deposits in Jurassic rocks; list of all jade and soapstone deposits in B.C.; where did Sebakwe operate in the early 1900s; number of producing mines operating in each of the last 6 decades; location of the magnetite suppliers in B.C.; a plot of mineral occurrences within the Cassiar-Iskut-Stikine Land Resource Management Plan; non-published documents available for the Huckleberry area; number of occurrences and assessment reports existing within a Treaty negotiation area; document of MINFILE occurrences associated with the sale of Reverted Crown grants; output from The MapPlace of a colour plot of mineral potential, mineral occurrences, rivers, roads and claims for the

New Polaris region; a list of producers and past producers suitable for recovery of minerals by leaching tailings. These show the diversity of our various tools for retrieving mineral-related information.

CONCLUSION

The Internet is a dynamic tool for accessing, displaying and distributing our mineral-related databases as they grow and are updated. The Ministry will continue to be innovative in implementing these tools to aid you in your quest for information.

CONTACTS

For additional information please contact:

MINFILE

Geological Survey Branch
 Ministry of Energy and Mines
 PO Box 9320, Stn Prov Gov't
 Victoria, BC, Canada V8W 9N3
 Office location: 5th Floor, 1810 Blanshard Street
 Tel: (250) 952-0386
 Fax: (250) 952-0381
 E-mail: Larry.Jones@gems5.gov.bc.ca
 Web: www.em.gov.bc.ca/mining/Geolsurv/Minfile

Most publications of the BC Geological Survey are available for purchase through:

Crown Publications Inc.
 521 Fort Street
 Victoria, BC, Canada, V8W 1E7
 Tel: (250) 386-4636
 Fax: (250) 386-0221
 E-Mail: crown@pinc.com
 Web: www.crownpub.bc.ca

