

# **RECOVERY PLAN FOR GRIZZLY BEARS IN THE NORTH CASCADES OF BRITISH COLUMBIA**



*June 1, 2004*

North Cascades Grizzly Bear Recovery Team

## EXECUTIVE SUMMARY

The North Cascades area contains one of the most imperiled grizzly bear populations in British Columbia with an estimate of fewer than 25 animals remaining in an area of 9 807 km<sup>2</sup>. This population has been designated as “Threatened” under the provincial Grizzly Bear Conservation Strategy and is shared with Washington State where it is listed as “Threatened” under the United States’ federal *Endangered Species Act*.

The primary factors that are believed to have caused the decline of the North Cascades grizzly bear population date back to the mid-19<sup>th</sup> century when there were high numbers of grizzly bears commercially trapped and destroyed through persecution and fear over potential conflicts. In the approximately 150 years since this population “bottleneck” the remnant population has not recovered.

The recovery planning process has been initiated under the Grizzly Bear Conservation Strategy to ensure that Threatened populations are not lost. Recovery plans are not land use plans. Existing or future approved strategic land use plans take precedence over recovery plans. Recovery plans are intended to be revised every five years based on any additional information available including the experience gained through Recovery Plan implementation.

The goal of this Recovery Plan is to restore the North Cascades Grizzly Bear Population Unit to Viable status.

The Recovery Plan includes the following objectives to achieve this goal:

1. Provide habitat of sufficient quantity and quality to support a Viable population.
2. Prevent population fragmentation and maintain genetic diversity.
3. Increase the number of grizzly bears.
4. Minimize the potential for grizzly bear/human conflicts.
5. Minimize human-caused mortality of grizzly bears.
6. Increase public knowledge of, and support for, grizzly bear recovery.
7. Facilitate interagency cooperation and management.

The foundation of the Recovery Plan is to provide effective grizzly bear habitat. The habitat strategies in the Recovery Plan apply only to the designated “spine” area the majority of important habitats in the North Cascades. The only exception is if new information documents areas where resident grizzly bear(s) are present outside the “spine”. The major focus under **objective #1** is on avoiding net impacts to grizzly bears over time from the development of new access routes and providing security for grizzly bears to utilize a suite of important habitats that will provide for their seasonal needs.

The North Cascades grizzly bear population is potentially isolated from other grizzly bear populations by both topographic features and human developments and activities. The closest grizzly bear population to the North Cascades is the Stein-Nahatlatch, which is west of the Fraser River. There are also internal sources of fragmentation resulting from major highways and other human developments. The strategies under **objective #2** involve identifying any potentially viable linkage areas both within the North Cascades Grizzly Bear Population Unit and between the North Cascades and Stein-Nahatlatch populations, implementing measures to conserve and enhance those linkages and augmenting the population genetically through the introduction of animals from other populations (see objective #3).

Given that the North Cascades population has not recovered over the last 150 years it is considered highly unlikely that the population will do so in the absence of active recovery efforts. The strategies under **objective #3** deal with the augmentation of the population with grizzly bears from other, healthy, populations. Augmentation will take place in the Manning West and East sub-units and will not occur until the Recovery Team is satisfied that appropriate measures have been implemented to minimize the potential for grizzly bear/human conflicts.

Avoiding grizzly bear/human conflicts will be critical to the success of the Recovery Plan. The strategies under **objective #4** emphasize preventing conflicts through education, planning and infrastructure improvements as well as responding effectively to any conflicts that do occur.

Given the small size of the North Cascades grizzly bear population, the loss of animals is extremely detrimental to the long-term prospects for recovery. As a result, limiting human-caused mortality of grizzly bears through education, planning and enforcement is the focus of the strategies under **objective #5**.

The strategies included under **objective #6** seek to improve the currently limited knowledge of grizzly bears in the North Cascades through outreach programs and by encouraging research. Public support for recovery efforts will be encouraged through an information and education program and fundraising will be undertaken to provide financial assistance with the implementation of the Recovery Plan.

Since the North Cascades is a cross-border population it is vital that recovery efforts in British Columbia be closely coordinated with the work being undertaken in Washington State. It is equally important that the various agencies responsible for the management of grizzly bears and their habitats in British Columbia continue to work together to achieve recovery. The strategies under **objective #7** are intended to ensure that this interagency cooperation is maintained and enhanced.

Finally monitoring must be conducted on an on-going basis to assess the success of the various strategies in the Recovery Plan in contributing toward the achievement of the plan's goal. This monitoring will include indicator(s) of population size and distribution, habitat conditions (including human impacts), grizzly bear mortalities and the number and nature of any conflicts.

# TABLE OF CONTENTS

EXECUTIVE SUMMARY .....	i
TABLE OF CONTENTS .....	iii
LIST OF FIGURES .....	iv
LIST OF TABLES .....	iv
ACRONYMS USED IN THIS DOCUMENT .....	v
1 INTRODUCTION .....	1
1.1 Background on Grizzly Bears .....	1
1.2 Grizzly Bears in British Columbia .....	1
1.3 Policy Context for Recovery Planning .....	3
2 GRIZZLY BEARS IN THE NORTH CASCADES .....	5
2.1 Description of the North Cascades Grizzly Bear Population Unit .....	5
2.2 Historic and Current Status of Grizzly Bears in the North Cascades Grizzly Bear Population Unit .....	6
2.3 Human Development and Activity within the North Cascades Grizzly Bear Population Unit .....	9
2.4 Recovery Planning in the North Cascades .....	10
2.5 The Context for Recovery Planning in the North Cascades .....	11
3 RECOVERY PLAN GOAL .....	13
4 OBJECTIVES AND STRATEGIES .....	14
4.1 Objective 1: Provide habitat of sufficient quantity and quality to support a Viable population. ....	14
4.2. Objective 2: Prevent population fragmentation and maintain genetic diversity.....	24
4.3 Objective 3: Increase the number of grizzly bears. ....	25
4.4 Objective 4: Minimize the potential for grizzly bear/human conflict. ....	26
4.5 Objective 5: Minimize human-caused mortality of grizzly bears. ....	28
4.6 Objective 6: Increase scientific and public knowledge of, and support for, grizzly bear recovery.....	28
4.7 Objective 7: Facilitate interagency cooperation and management. ....	30
5 MONITORING, EVALUATION AND PLAN REVIEW .....	31
5.1 Population Size and Distribution.....	31
5.2 Habitat Conditions. ....	31
5.3 Grizzly Bear Mortalities.....	32
5.4 Grizzly Bear/Human Conflicts.....	32
5.5 Recovery Plan Implementation. ....	32
6 GLOSSARY .....	33
7 REFERENCES .....	35

8	APPENDICES .....	39
8.1	Grizzly Bear Biology .....	39
8.2	Description of Land Use Activities in the North Cascades GBPU .....	42
8.3	Description of the Method Used to Estimate Grizzly Bear Population Size in the North Cascades GBPU.....	47
8.4	Riparian and Berry Producing Habitats in the North Cascades GBPU .....	48
8.5	Total and Core Area Habitat Capability by Sub-Unit in the North Cascades GBPU.....	49
8.6	Work Plan for 2004/2005.....	53
8.7	Potential Funding Sources for Implementation of the Recovery Plan .....	54

**LIST OF FIGURES**

1.	Current and Historic Grizzly Bear Distribution in North America .....	1
2.	The Conservation Status of Grizzly Bear Population Units in British Columbia .....	3
3.	Location of the North Cascades Grizzly Bear Population Unit.....	5
4.	Sub-units within the North Cascades Grizzly Bear Population Unit.....	6
5.	Grizzly Bear Habitat Capability in the North Cascades Grizzly Bear Population Unit .....	8
6.	Reported Grizzly Bear Sightings in the North Cascades Grizzly Bear Population Unit and Areas to the East from 1960-2002.....	9
7.	Planning Areas Overlapping the North Cascades Grizzly Bear Population Unit.....	12
8.	Estimated Growth of the North Cascades Grizzly Bear Population.....	13
9.	Core Areas in the North Cascades Grizzly Bear Population Unit.....	22
10.	Areas Where Open Road Density Exceeds 0.6km/km <sup>2</sup> .....	23

**LIST OF TABLES**

1.	The Relationship between Viability Class, Population Estimate and Conservation Status for Grizzly Bear Population Units.....	2
2.	Important Grizzly Bear Habitat Types and their Season of Use in the North Cascades Grizzly Bear Population Unit.....	16
3.	Percentage of Core Area in each “Spine” Sub-unit.....	22
4.	Percentages of High Open Road Density (ORD) Area in each “Spine” Sub-unit.....	23
5.	Riparian Habitats in the North Cascades GBPU .....	48
6.	High and Moderate Berry (principally <i>Vaccinium</i> ) Producing Site Series in the North Cascades Grizzly Bear Population Unit .....	48
7.	Total and Core Area Habitat Capability by Sub-unit in the North Cascades Grizzly Bear Population Unit .....	49
8.	Habitat Capability Classes and Densities .....	52
9.	Work Plan for 2004/2005.....	53

## ACRONYMS USED IN THIS DOCUMENT

<b>CWD</b>	Coarse Woody Debris
<b>GBCS</b>	Grizzly Bear Conservation Strategy
<b>GBPU</b>	Grizzly Bear Population Unit
<b>IGBC</b>	Interagency Grizzly Bear Committee
<b>IRM</b>	Integrated Resource Management
<b>IWMS</b>	Identified Wildlife Management Strategy
<b>LWBC</b>	Land and Water BC
<b>MEM</b>	Ministry of Energy and Mines
<b>MAFF</b>	Ministry of Agriculture, Food and Fisheries
<b>MOF</b>	Ministry of Forests
<b>MOT</b>	Ministry of Transportation
<b>MSRM</b>	Ministry of Sustainable Resource Management
<b>MWLAP</b>	Ministry of Water, Land and Air Protection
<b>OGMA</b>	Old Growth Management Area
<b>ORD</b>	Open Road Density
<b>WHA</b>	Wildlife Habitat Area
<b>WTP</b>	Wildlife Tree Patch

# 1 INTRODUCTION

## 1.1 Background on Grizzly Bears

Grizzly bears (*Ursus arctos horribilis*) are omnivores that require large tracts of suitable habitat to meet their ecological requirements (Appendix 1). Although grizzly bears can live over 30 years, females do not reach sexual maturity until age 5 or 6 and have small litters of 1-4 cubs every 3-4 years. As a result of this low rate of reproduction grizzly bear populations are vulnerable to excessive human-caused mortality. Even under ideal conditions their populations grow more slowly than those of other large mammals.

Due to persecution by humans as well habitat impacts including human settlement, hydroelectric development, road building, resource extraction and agriculture the range of grizzly bears has been significantly reduced in North America (Figure 1). A number of the populations along the southern portion of the current range are now considered to be at risk of extirpation.



**Figure 1. Current and Historic Grizzly Bear Distribution in North America.**

## 1.2 Grizzly Bears in British Columbia

British Columbia is home to approximately 17 000 grizzly bears, about half the Canadian population and one quarter of the grizzly bears remaining in North America. The current provincial population is only half of estimated historic numbers in the province. Grizzly bears have been extirpated from approximately 10% of their former range in British Columbia. This decline in numbers and range can be attributed to unsustainable levels of human-caused mortality and the loss of effective habitat. As a result of their vulnerability to human impacts, grizzly bears are Blue-listed in British Columbia and are listed as Special Concern by the Committee on the Status of Endangered Wildlife in Canada and under the federal *Species at Risk Act*.

In 1995 British Columbia launched the Grizzly Bear Conservation Strategy (GBCS) to ensure the continued existence of grizzly bears and their habitats for future generations.

The GBCS has four goals:

- To maintain in perpetuity the diversity and abundance of grizzly bears and the ecosystems on which they depend throughout British Columbia for future generations.
- To improve the management of grizzly bears and their interactions with humans.
- To increase public knowledge and involvement in grizzly bear management.
- To increase international cooperation in management and research of grizzly bears.

The current range of grizzly bears in British Columbia has been divided into Grizzly Bear Population Units (GBPUs) which delineate individual populations. GBPU boundaries are physical features that largely restrict grizzly bear movement. Several southern populations, including the North Cascades, are shared between the U.S. and Canada.

Each GBPU in the province has been assigned a Conservation Status of either Threatened or Viable (Figure 2). This Conservation Status is linked to the Viability Class for the GBPU, which is based on the difference between the current population estimate and the estimated minimum habitat capability for the GBPU (Table 1). Habitat capability represents the ability of the habitat, under optimal conditions to provide the life requisites of a species, irrespective of its current condition.

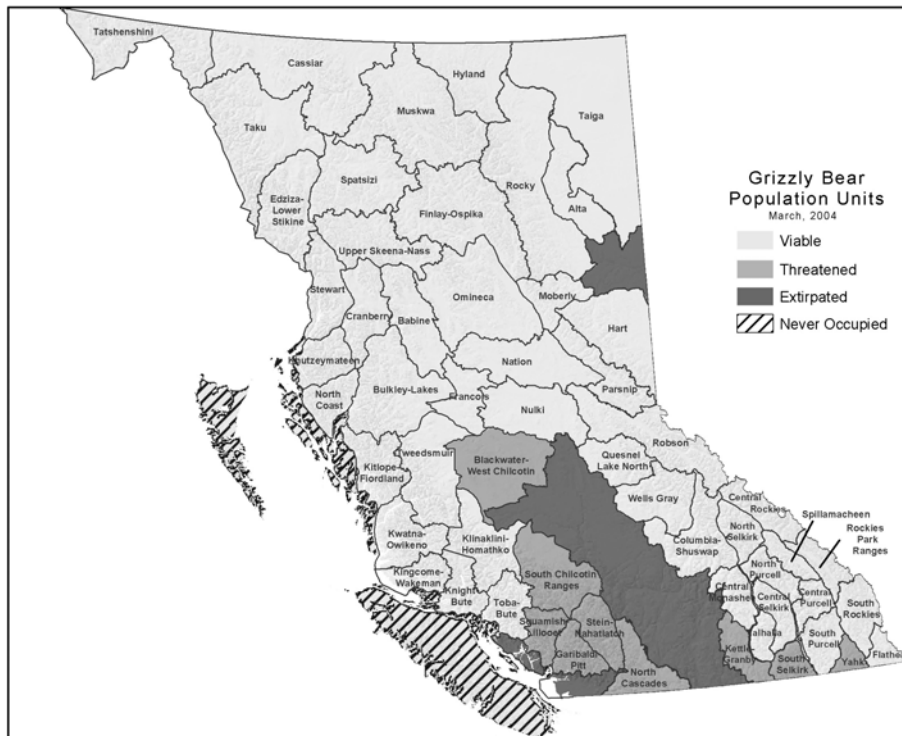
GBPUs that fall into Viability Class C or D are considered Threatened. Based on the mandate of the GBCS a comprehensive Recovery Plan is to be developed to provide direction on the restoration of each Threatened GBPU to long-term viability.

The selection of 50% of minimum habitat capability as the threshold below which a population is considered “Threatened” should not be considered an absolute indication of population status but rather a subjectively chosen criteria in the context of considerable uncertainty about what constitutes a “Viable” grizzly bear population. In some cases a population may be viable at less than 50% of habitat capability. In others, populations that exceed 50% may still not be viable over the long-term. The Grizzly Bear Scientific Panel reviewed the 50% criteria for designating “Threatened” GBPUs and endorsed it (Grizzly Bear Scientific Panel 2003).

**Table 1. The Relationship between Viability Class, Population Estimate and Conservation Status for Grizzly Bear Population Units.**

<b>Viability Class</b>	<b>Population Estimate</b>	<b>Conservation Status</b>
A (Excellent)	75-100% of minimum habitat capability	Viable
B (Good)	50-<75% of minimum habitat capability	Viable
C (Fair)	25-<50% of minimum habitat capability	Threatened
D (Poor)	1-<25% of minimum habitat capability	Threatened
X (Extirpated)	0% of minimum habitat capability	Extirpated





**Figure 2. Conservation Status of Grizzly Bear Population Units in British Columbia.**

### 1.3 Policy Context for Recovery Planning

Recovery planning is an important component of the GBCS. Restoring population at risk to long-term viability is crucial to maintaining the abundance of grizzly bears in British Columbia and to ensuring that grizzly bears continue to occupy their existing range in the province. The recovery of cross-border populations is also directly related to the GBCS’s goal of taking a leadership role internationally in grizzly bear conservation.

Grizzly bear recovery efforts also play a role in the province’s demonstration of its commitment to conserve grizzly bears and other wildlife. This has direct relevance to both the tourism industry and resource industries such as forestry and mining that depend on meeting the sustainability expectations of the marketplace. Grizzly bear recovery is therefore important not just from an ecological point of view but also an economic perspective.

Recovery planning is a tool that is used to stop and, where possible, reverse the decline in a species’ or population’s status. Several policies provide the context for recovery planning for grizzly bears in British Columbia:

- The GBCS states that it “will not impose new land use processes or demands on the land base over and above those already sanctioned by government.”
- The Identified Wildlife Management Strategy (IWMS) includes higher level plan recommendations for addressing the needs of sensitive species through strategic land use plans such as Land and Resource Management Plans (LRMPs). The IWMS states that: “...government will develop a series of options for the management of grizzly bear habitat for the planning table’s consideration. These options will not include a scenario that results in a population becoming or remaining threatened throughout the population unit.”

- The IWMS also states that: “Where populations are threatened with extirpation, a Recovery Plan and its Terms of Reference may be developed... in consultation with local stakeholders. Recovery Plans are not land use plans but rather will use a variety of techniques to enhance threatened populations within the existing agreed upon land and resource allocations. These techniques may include the temporary prohibition of (grizzly bear) hunting where it is currently practiced, public education, reduction of bear/human conflicts and other measures.”

Recovery planning is led by the provincial government through an interagency “Recovery Team” comprising scientific and planning specialists from the main resource agencies (e.g., MWLAP, MoF, MEM and MSRM). The Recovery Team prepares drafts of the Recovery Plan.

First Nations, local governments and interested stakeholders have opportunities to contribute to draft plans before they are submitted for review and acceptance. Recovery Plans are implemented by government agencies, First Nations, tenure holders, resource developers and area users.

Recovery Plans are revised every five years based on the results of implementation and monitoring, as well as any other new information that becomes available. First Nations, local governments and interested stakeholders can participate in public liaison committees that may be established to provide a forum for comment on the development and implementation of Recovery Plans.

Once a Recovery Plan is accepted either by Cabinet, or the Minister responsible, it becomes policy advice for statutory decision makers to consider when issuing tenures, approving permits, or managing the resources or land uses for which they are responsible. A Recovery Plan provides guidance to statutory decision makers so they can exercise their authority in a way that accommodates and facilitates the recovery of grizzly bears.

## 2 GRIZZLY BEARS IN THE NORTH CASCADES

The grizzly bear population in the North Cascades GBPU is small, probably less than 25 animals, and is threatened by human activities. This population is shared with the State of Washington, where grizzly bears are listed as “Threatened” under the federal *Endangered Species Act* and are designated as “Endangered” by state legislation. As a result, recovery of grizzly bears in the North Cascades will require cooperation between the United States and Canada.

### 2.1 Description of the North Cascades Grizzly Bear Population Unit

The North Cascades GBPU is located in the southern interior of BC (Figure 3). It has a roughly triangular shape and covers about 9 800 square kilometres. It is bounded on the south by the US border, on the west, between Chilliwack and Lytton, by the Fraser River, and on the east, from Lytton through Princeton and Keremeos, by a series of local geographic features. It includes portions of several major watersheds, including the Chilliwack, Skagit, Similkameen, Fraser Canyon and Lower Nicola. Approximately 20% of the GBPU is comprised of provincial parks, recreation areas and ecological reserves.

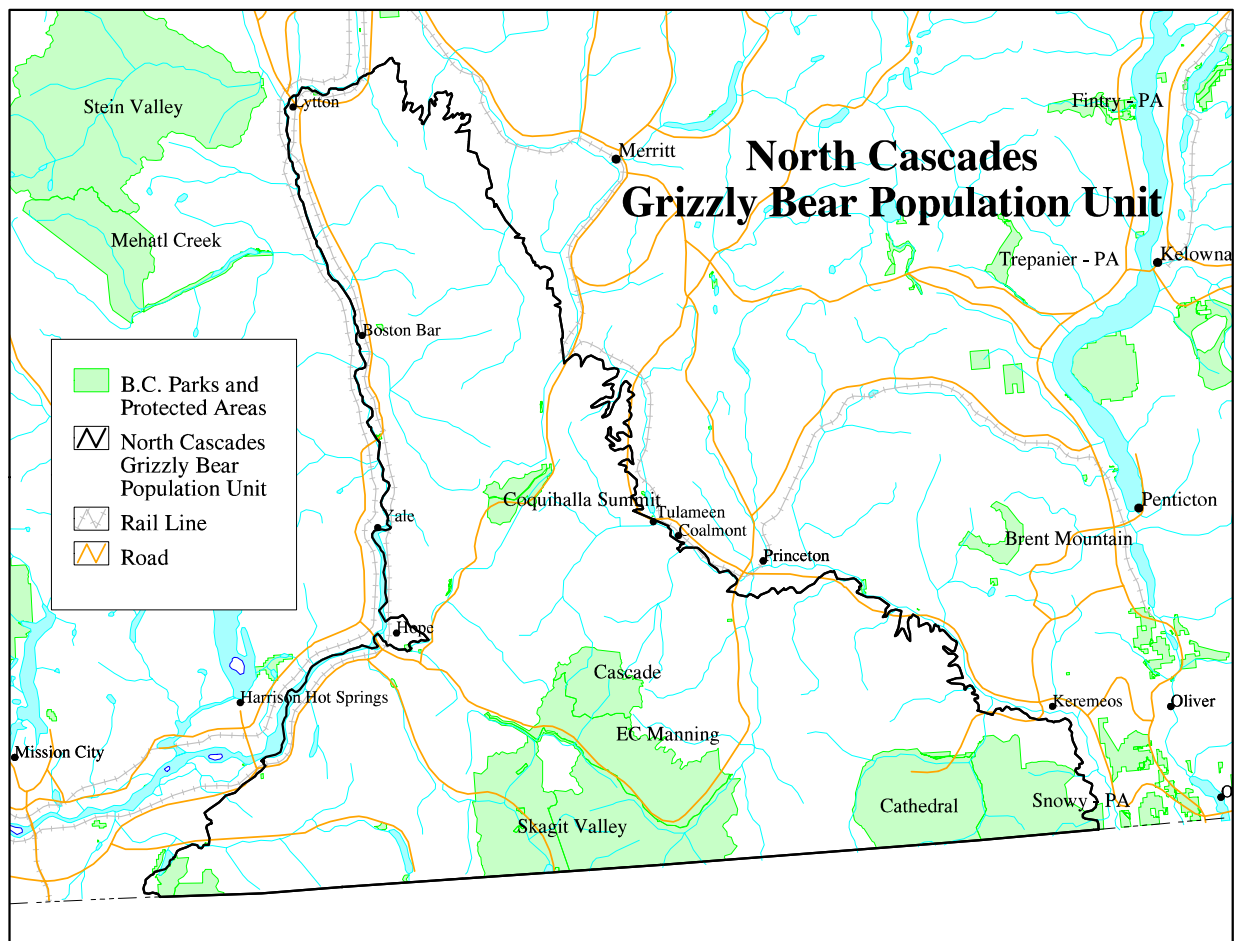
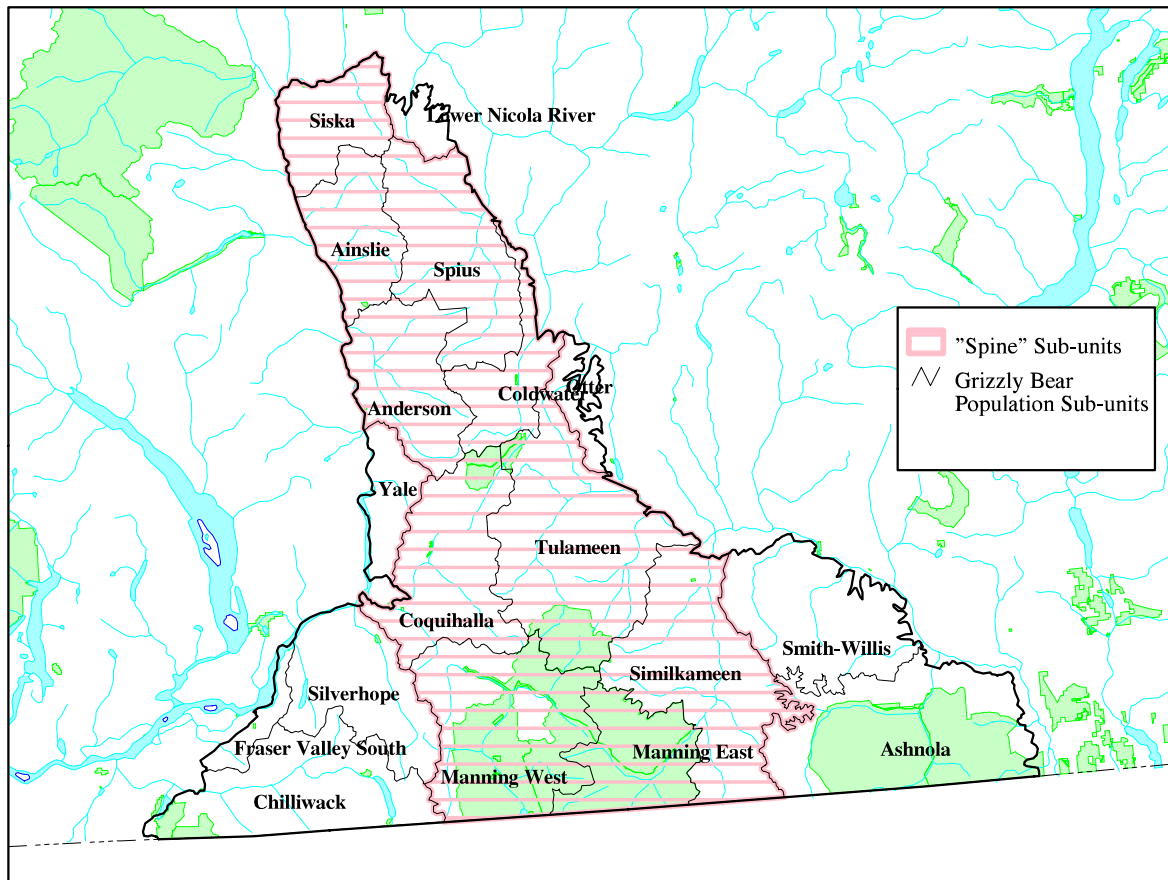


Figure 3. Location of the North Cascades Grizzly Bear Population Unit.

Biogeoclimatic Ecosystem Classification (BEC) Units found in the North Cascades GBPU are: Alpine Tundra, Coastal Western Hemlock, Engelmann Spruce-Subalpine Fir, Interior Douglas-fir, Mountain Hemlock and Montane Spruce, with minor amounts of Ponderosa Pine near Lytton. Most of the recovery area is forested with only limited alpine and subalpine habitats.

For planning purposes the GBPU has been divided into sub-units based on local watersheds (Figure 4). These correspond to landscape units defined by the provincial government for biodiversity planning. The GBPU has also been divided into “spine” and “peripheral” areas for the purpose of habitat and access management.



**Figure 4. Sub-units within the North Cascades Grizzly Bear Population Unit.**

## **2.2 Historic and Current Status of Grizzly Bears in the North Cascades Grizzly Bear Population Unit**

An analysis of habitat capability, based on Biogeoclimatic Ecosystem Classification mapping, indicates that under ideal conditions the North Cascades could support at least 293 grizzly bears (Figure 5).

It is difficult to establish historical (i.e., prior to 1960) grizzly bear population numbers for the North Cascades based on written records. Interviews with long-time residents suggest that the population was small as far back as the 1930s (Gyug 1998). Sullivan (1983) documented 425

grizzly hides taken from the Cascades area in the five year period from 1846 to 1851. Based on this evidence, Almack et al. (1993) concluded that this human-caused mortality rapidly reduced the North Cascades grizzly bear population, creating a population “bottleneck” from which it has not recovered. There is little doubt that the North Cascades was once home to many more grizzly bears than now.

Grizzly bear status in the North Cascades GBPU was recently assessed to estimate current population size and distribution (Gyug 1998). A total of 124 grizzly bear records dated between 1962 and 1997 were reviewed to determine their reliability.<sup>1</sup> From these data Gyug (1998) estimated that there were at least 17 adult/subadult grizzly bears present, with a likely total population of 23. Of these, there are likely to be only 5-6 reproductive females. Sightings have also been collected and reviewed since 1998 (Figure 6). A traditional ecological knowledge study on grizzly bears in the North Cascades has been conducted and further supports the conclusion that the area once supported a significantly larger population (L. Rhodes, pers. comm.).

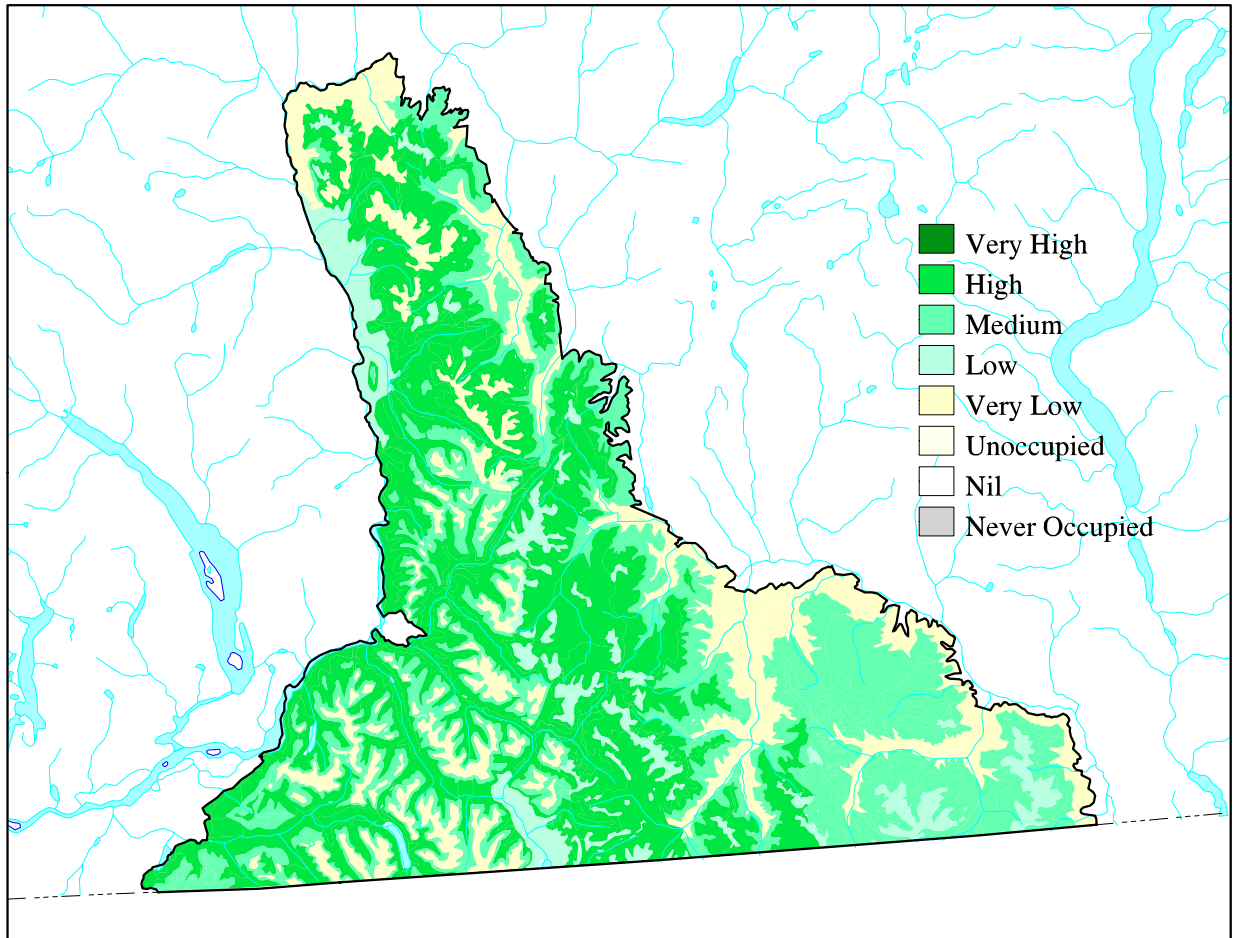
In 1998, the Ministry of Environment, Lands and Parks undertook a DNA inventory of hair samples. Only one female grizzly bear was detected. During the study, four grizzly bears were seen: a sow with a cub and two independent bears of unknown gender. Capture efforts have been attempted twice with no success. In the fall of 1999 an attempt was made to capture grizzly bears in the North Cascades using aerial darting. Only one possible grizzly bear that could not be confirmed or captured was seen during a week of searching by both helicopter, airplane and crews stationed at lookout points. In the spring of 2000 a small-scale snaring effort was conducted, however, again no grizzly bears were captured. In fall, 2003 reconnaissance flights were made to attempt to locate grizzly bears for heli-darting, however, none were observed.

Grizzly bears in the North Cascades appear to be relatively isolated from other grizzly bear populations. There are no known populations of grizzly bears immediately to the east, although there have been occasional reported sightings between the eastern boundary of the North Cascades GBPU and Okanagan Lake. To the west, there is a contiguous grizzly bear population from Spuzzum Creek northwards in the Stein-Nahatlatch GBPU (which is also Threatened). However, the Fraser River as well as a highway, two railways and other human developments and activity in the area form a substantial barrier to grizzly bear movements between the Stein-Nahatlatch and the North Cascades. Grizzly bears have been extirpated from areas to the west, east and south of the U.S. portion of the North Cascades.

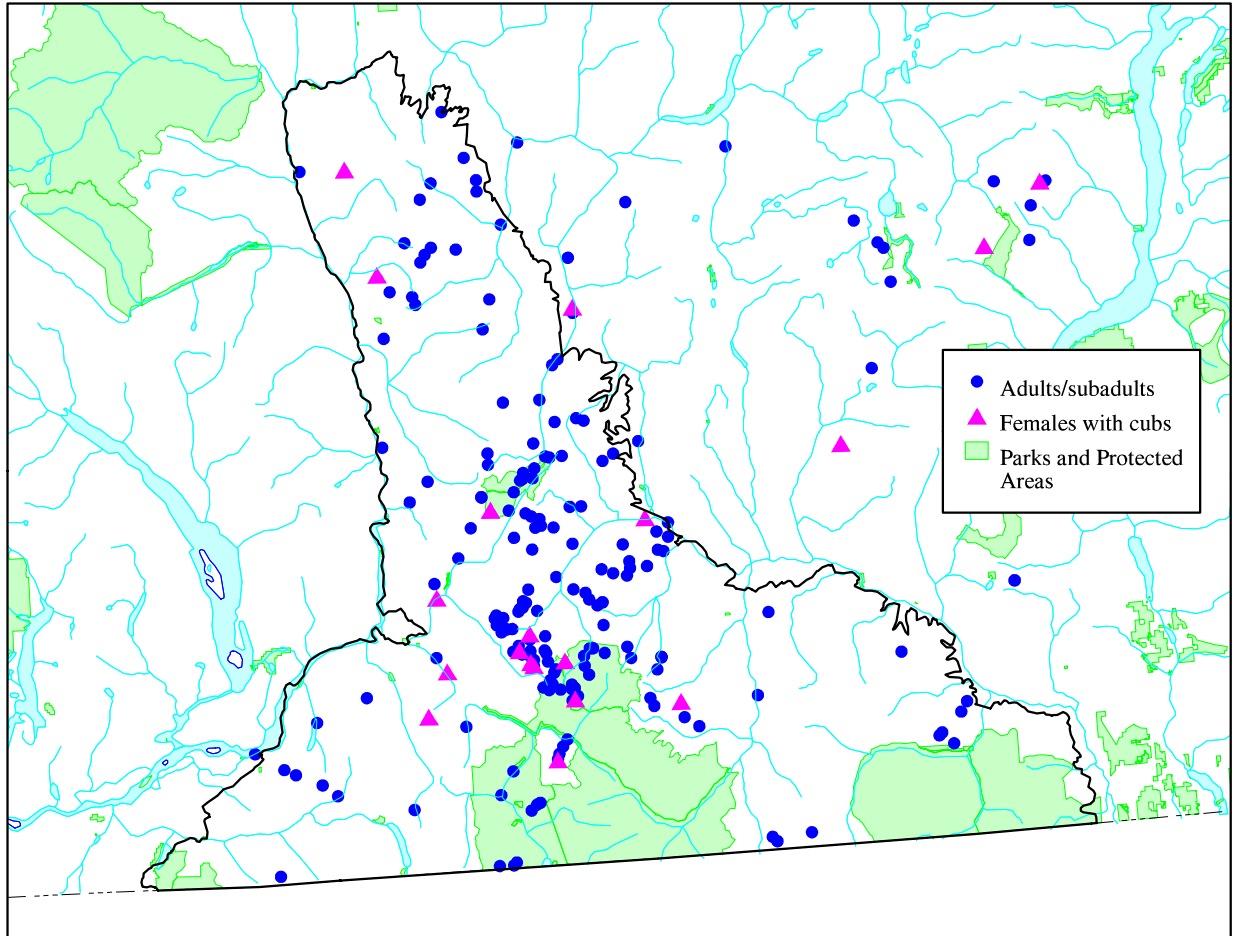
---

<sup>1</sup> Sightings were rated for reliability from 1 (highest) to 4 (lowest). A reliability rating of 1 indicates a "confirmed" sighting based on physical evidence, or clear photos or video of grizzly bears or tracks. A reliability rating of 2 indicates a "very likely" record where several unprompted distinguishing characteristics could be described. A reliability rating of 3 indicates a "likely" record with limited distinguishing information. A reliability rating of 4 indicates a "maybe" record where the observer was unable to provide distinguishing characteristics. Records with a reliability rating of 4 were not included in the database (Gyug 1998).

Due to the small size and isolation of the North Cascades grizzly bear population it is believed to be at significant risk of eventual extirpation in the absence of active recovery efforts. In addition, the habitat conditions in the North Cascades are being impacted by human activity. If the needs of grizzly bears are not incorporated into planning for the area to a greater degree, these impacts could significantly reduce or foreclose the potential for the population to recover.



**Figure 5. Grizzly Bear Habitat Capability in the North Cascades Grizzly Bear Population Unit.**



**Figure 6. Reported Grizzly Bear Sightings in the North Cascades Grizzly Bear Population Unit and Areas to the East from 1960-2002.**

### **2.3 Human Development and Activity within the North Cascades Grizzly Bear Population Unit**

Land uses within the North Cascades GBPU of significance to grizzly bears include forestry, mining, agriculture, settlement and residential development, transportation corridors, recreation, hunting and First Nations traditional use. These activities are described in detail in Appendix 2, but are summarized below. Grizzly bear recovery efforts need to address these values and uses.

- **Transportation:** There are currently three major transportation corridors associated with the North Cascades GBPU: the Fraser Canyon which forms the western boundary, occupied by the Trans-Canada Highway (#1) and the Canadian Pacific and Canadian National railways; the Coquihalla Highway (#5); and the Hope-Princeton Highway (#3) (Figure 3). Major highways and railways can represent barriers to grizzly bear movements as well as a mortality risk (e.g., from bears being struck by vehicles).
- **Forestry:** Forest harvesting has occurred within the North Cascades for over 100 years and forms an important basis for the economic health of communities in the area. Coordinating forestry activities to avoid reductions in habitat suitability and effectiveness through timber harvesting, silviculture and road construction and use is critical to grizzly recovery.

- **Mining and Mineral Exploration:** Mineral exploration and mining have formed an important part of the regional economy for over 150 years. With nearly 400 known mineral occurrences, including current or past producing mines in 8 of the 18 sub-units, grizzly bear recovery will be integrated with the need to provide access to develop mineral resources.
- **Energy:** The North Cascades GBPU contains energy resources in the form of coal, coalbed gas, and small-scale hydroelectric which may see future development. Several electrical transmission corridors and natural gas pipeline routes traverse the area as well.
- **Agriculture:** Ranching and other forms of agriculture are prevalent in the eastern half of the North Cascades GBPU. Grizzly bear recovery will require coordinating livestock activities to avoid impacts on habitat as well as grizzly bear/human conflicts.
- **Settlement and Residential Development:** Current human populations within the North Cascades GBPU are small and dispersed, however, the potential for population growth exists. Management of grizzly bear/human conflict associated with both urban centres and dispersed rural settlement will be an important component of grizzly bear recovery.
- **Recreation:** The North Cascades GBPU is close to large urban centres in the Lower Mainland and Okanagan Valley. It attracts numerous visitors who use parks that were developed for recreation as well as its many lakes, rivers and backcountry roads and trails. Proactive management is necessary to minimize conflicts between recreationists and grizzly bears.
- **Hunting:** There is no grizzly bear hunting season in the North Cascades, however, hunting seasons exist for a wide variety of other species including black bears. Recovery efforts will need to include measures to prevent conflicts between grizzly bears and hunters as well as the accidental killing of grizzly bears by black bear hunters.
- **First Nations:** There is long established traditional use by many First Nations bands within the North Cascades GBPU and it is important to integrate grizzly bear recovery with these uses as well as with treaty negotiations where applicable.

#### 2.4 Recovery Planning in the North Cascades

This Recovery Plan was prepared by the North Cascades Grizzly Bear Recovery Team (NCGBRT). The Team was formally established in April 1999 and included representatives from the Ministry of Forests, Ministry of Environment, Lands and Parks, Ministry of Energy and Mines and U.S. members from the North Cascades Subcommittee of the Interagency Grizzly Bear Committee (IGBC). The joint U.S./British Columbia commitment to recover grizzly bears in the North Cascades is stated through a Memorandum of Understanding between the provincial government and the IGBC.

The terms of reference for the North Cascades recovery planning process seek “to achieve recovery within the constraints of existing government policy direction on land use and acceptable impacts on recreation and the extraction of resources (including both operational costs and [in the case of forests] timber supply).” If a technical assessment conducted by a Recovery Team indicates that this is not possible, the Team requests further direction from senior government managers before proceeding. The direction received is incorporated into the draft Recovery Plan.



On January 19, 2001 the *Recovery Plan for Grizzly Bears in the North Cascades of British Columbia*, was released as a draft for consultation purposes. The Recovery Team conducted a total of 24 stakeholder sessions, which commenced March 5, and ended on May 9, 2001. Sessions were targeted to groups that were likely to have a direct interest in the North Cascades backcountry area. Stakeholders were represented from the following resource and recreation sectors: forestry; ranching; mining; prospectors; snowmobilers; four wheel drivers; sportsmen; academia; backcountry horsemen; local and civic governments; naturalists; all terrain vehicle users; and motorcyclists.

A total of 746 individuals attended the stakeholder sessions. Beginning April 12, 2001 Public Consultation Sessions were held in nine communities considered to be most affected by the Recovery Plan: Princeton, Merritt, Hope, Chilliwack, Manning Park, Keremeos, Lytton, Boston Bar, and Tulameen. In total 248 citizens participated through the open houses. In addition to these consultation sessions, the public was invited to write or e-mail their input on the Recovery Plan. In total 55 written submissions were received. The Recovery Team summarized the input received during the consultation process and proposed a series of revisions to the Recovery Plan as a result.

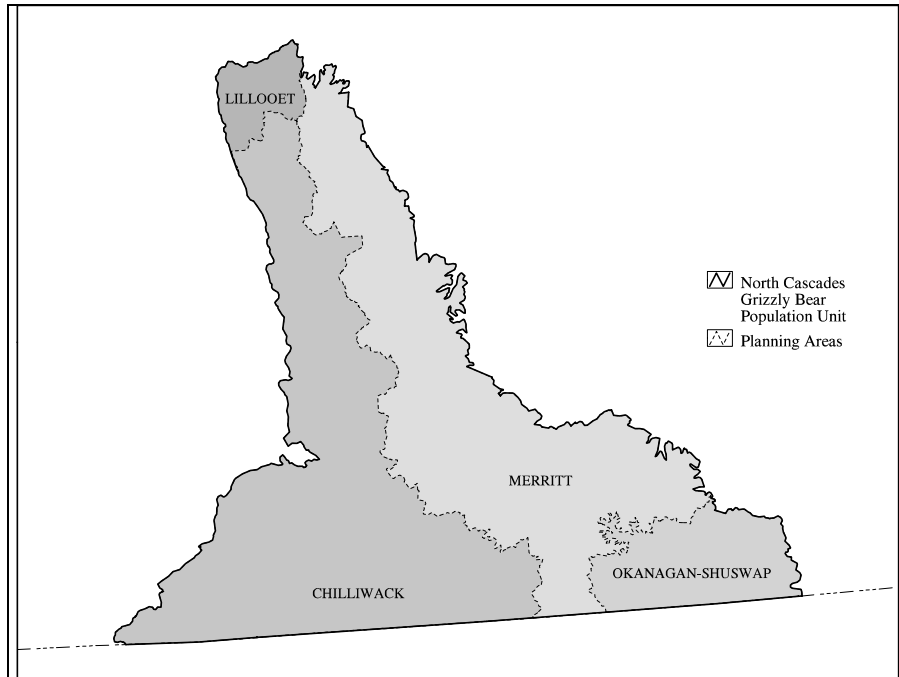
A North Cascades Grizzly Bear Taskforce comprised of representatives from local First Nations, the forestry, mining and ranching industries, outdoor recreationists, conservationists, local residents and hunters and fishers was appointed in July 2002 to make recommendations on the completion and implementation of a Grizzly Bear Recovery Plan for the North Cascades of British Columbia, consistent with the long-term conservation of the population. A majority of the taskforce reached consensus on a package of recommendations that was accepted by the Minister of Water, Land and Air Protection. The Minister then directed the Recovery Team to finalize the Recovery Plan based on the consensus package of recommendations as well as specific elements addressed in the Minister's responses to the independent submissions from the other taskforce members.

## **2.5 The Context for Recovery Planning in the North Cascades**

The North Cascades Grizzly Bear Recovery Plan area overlaps four sub-regional (or strategic) planning areas: Okanagan-Shuswap, Lillooet, Merritt and Chilliwack (Figure 7). A Land and Resource Management Plan (LRMP) was approved in the Okanagan-Shuswap area in January 2001. The Lillooet LRMP is nearing completion. LRMPs have not been initiated for the Chilliwack or Merritt areas, instead strategic planning will follow a more detailed landscape-level planning process (e.g., a sustainable resource management plan or SRMP), as staff and resources allow. Planning processes for establishing new protected areas have been completed for Okanagan-Shuswap, Lillooet and Chilliwack, but not Merritt.

The North Cascades Grizzly Bear Recovery Plan is consistent with the approved Okanagan-Shuswap LRMP and the draft Lillooet LRMP. The Recovery Plan complements LRMP direction and provides supplementary information for implementing the LRMP within the Recovery Plan area. For areas where strategic land use planning has not commenced (i.e., Chilliwack and Merritt) the North Cascades Grizzly Bear Recovery Plan will provide valuable input. Recovery Plan direction will be considered in, and will contribute to, strategic plan development. Because strategic land use plans consider a broader range of land uses and resource values, the Recovery

Plan may have to be revised once strategic plans have been completed. Every effort will be made, however, to ensure that the goals of the Recovery Plan are reflected in future strategic land use plans.



**Figure 7. Planning Areas Overlapping the North Cascades Grizzly Bear Population Unit**

The Recovery Plan area comprises protected areas and integrated resource management (IRM) lands. Protected areas are managed by MWLAP (through BC Parks). IRM lands are managed by several agencies (e.g., MoF, MWLAP, MEM, LWBC, MoT and MAFF) depending on their mandates.

Until changed by Government, IRM lands within the Recovery Plan area continue to be part of the Province’s working landbase and working forest. These areas are open to commercial activities and resource development (e.g., forestry, range, mining, energy, commercial recreation, infrastructure, etc.), subject to applicable legislation, regulations and policies. IRM lands are also available for biodiversity and wildlife management planning through the establishment of, for example, old growth management areas (OGMAs), wildlife tree patches (WTPs) and wildlife habitat areas (WHAs).

The North Cascades Grizzly Bear Recovery Plan is consistent with the Province’s two-zone land use system for mineral exploration and mining. All areas not in the protected zone (i.e., parks, protected areas, ecological reserves, Indian Reserves, etc.) form the mineral zone which is open for subsurface resource exploration and development (subject to applicable legislation, regulations and policies).

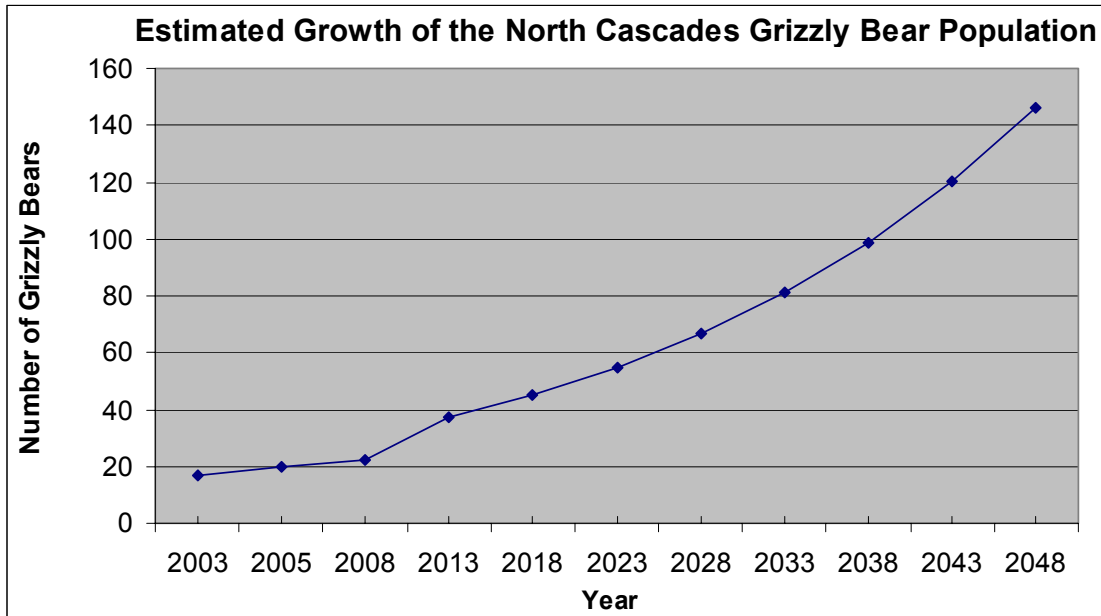
### 3 RECOVERY PLAN GOAL

**The goal of this Recovery Plan is to restore the North Cascades Grizzly Bear Population Unit to Viable status.**

Achieving Viable population status requires a population >50% of a GBPU's estimated minimum habitat capability. The current estimated minimum habitat capability for the North Cascades GBPU is 293 grizzly bears (Appendix 5). As a result, achieving the Recovery Plan goal would represent a population of approximately 150 grizzly bears. A population of 150 grizzly bears in an area of 9 807 km<sup>2</sup> corresponds to a density of approximately 1.5 grizzly bears/100 km<sup>2</sup> – a relatively low density compared to other grizzly bear populations in North America (MacHutchon et al. 1993, McLellan 1994, Miller et al. 1997).

Based on the assumption that augmentation will occur and that the population will subsequently grow at a rate of approximately 4% per year the population would achieve Viable status by approximately 2050 depending on the timing and scale of augmentation (Figure 8). The assumed growth rate of 4% incorporates an estimate of approximately 2% of the population that may be lost to human-caused mortality annually (e.g., roadkills, destruction as a result of conflicts, poaching etc.) (Bunnell and Tait 1981, Harris 1986, Miller 1990, Hovey and McLellan 1996).

It is expected that when the Recovery Plan is reviewed every five years the goal will also be re-evaluated. This review will be based on any new information available including habitat capability, suitability and effectiveness mapping, population viability analysis(es), research on grizzly bear habitat use in the North Cascades and the experience gained through Recovery Plan implementation.



**Figure 8. Estimated Growth of the North Cascades Grizzly Bear Population.**

## 4 OBJECTIVES AND STRATEGIES

To achieve this goal, the objectives are to:

1. Provide habitat of sufficient quantity and quality to support a Viable population.
2. Prevent population fragmentation and maintain genetic diversity.
3. Increase the number of grizzly bears.
4. Minimize the potential for grizzly bear/human conflict.
5. Minimize human-caused mortality of grizzly bears.
6. Increase public knowledge of, and support for, grizzly bear recovery.
7. Facilitate interagency cooperation and management.

### 4.1 Objective 1. Provide habitat of sufficient quantity and quality to support a Viable population

The recovery of grizzly bears in the North Cascades GBPU will not be possible unless there is enough effective habitat to support these animals. The first step in examining the potential for an area to support grizzly bears is to determine its habitat capability. Habitat capability represents the ability of the habitat, under optimal conditions to provide the life requisites of a species, irrespective of its current conditions. For example, a forested area that would support high densities of berry producing shrubs used by grizzly bears when it is at an early seral stage of succession (young forest) would have high habitat capability (even when the area was at another seral stage that provided much less food for grizzly bears).

The second step in assessing the ability of an area to support grizzly bears is to determine its habitat suitability. This reflects the actual as opposed to ideal habitat conditions based on the impacts of habitat loss and alteration. Using the example cited above of a forested area that has high habitat capability because of the value of the site to grizzly bears when it supports young forest, the same area may have lower habitat suitability when the forest is at an intermediate seral stage where little light reaches the forest floor and therefore the berry producing shrubs are much less productive. While habitat suitability changes over time based on the actual conditions of the habitat, habitat capability remains constant. Habitat suitability can equal but never exceed habitat capability for a given area as capability represents the ideal set of conditions.

The final step in the assessment process is to determine habitat effectiveness which takes the habitat suitability of the area and further accounts for impacts such as habitat displacement and fragmentation that reduce the ability or willingness of grizzly bears to use the habitat. Continuing with the same forested habitat example, the habitat effectiveness of this site (even when suitability is high) would be low if grizzly bears were displaced from the area by the disturbance associated with roads with high traffic volume located nearby. Habitat effectiveness can equal habitat suitability but never exceed habitat suitability for a given area as suitability represents the current conditions in the absence of human disturbance and fragmentation.

Habitat capability, suitability and effectiveness can be expressed as a number of animals or as a percentage of the area's habitat capability. While habitat capability can not be increased, habitat suitability and effectiveness can be. Habitat suitability can be improved by managing habitats for seral stages that have higher productivity for grizzly bears (e.g., by conducting a prescribed burn to encourage the growth of berry producing shrubs). Habitat effectiveness can be improved by

reducing human disturbance (e.g., by avoiding the use of a road through grizzly bear habitat during the period when bears might be expected to be present). Efforts to increase habitat effectiveness and suitability will produce the greatest benefits for grizzly bears when they are coordinated and focused on habitats with moderate to high habitat capability.

When considering the needs of grizzly bears within a GBPU it is important to recognize two distinct scales: stand and landscape. At the stand scale, grizzly bears require habitat secure from disturbance where the available food meets their needs. At the landscape scale these stand level habitats must be well distributed, encompass the full range of seasonal habitat needs and be accessible to grizzly bears (i.e., not subjected to impacts from displacement or fragmentation).

All of the following habitat strategies apply only to the “spine” area of the North Cascades GBPU which consists of the following sub-units: Manning East, Manning West, Similkameen, Coquihalla, Tulameen, Anderson, Coldwater, Ainslie, Spius and Siska (Figure 4). The focus in areas outside the “spine” will be on other objectives such as minimizing grizzly bear/human conflicts and human-caused mortality.

The reason for concentrating on the “spine” area is that it potentially encompasses sufficient habitat to achieve the Recovery Plan goal. The estimated minimum habitat capability of the “spine” sub-units is 199 grizzly bears and the current Core Areas of the sub-units in the “spine” have a total estimated minimum habitat capability of 119 grizzly bears (Appendix 5). The geographic boundaries of the “spine” area should be reviewed at five year intervals (when the Recovery Plan is reviewed) and alterations made as necessary, based on any new information obtained.

The habitat capability analysis conducted for the North Cascades GBPU indicates that in order to reach the recovery goal it would be necessary for the “spine” to support approximately 75% of the minimum estimated habitat capability for this area (i.e., approximately 150 grizzly bears in an area whose minimum estimated habitat capability is 199 grizzly bears). This is a simplification as it is recognized that some grizzly bears will almost certainly spend some time and possibly extended periods outside the “spine”.

The following strategies seek to address the need to maintain, and, if necessary, restore, the habitat conditions required to support the Recovery Plan goal.

#### **4.1.1 Habitat Suitability at the Stand Scale**

Given the relative lack of salmon and large, wild ungulates (i.e., elk, moose or caribou) grizzly bears in the North Cascades are assumed to largely depend on plant forage to meet their nutritional needs. Non-forested and early seral habitat features typically provide quality foraging opportunities for grizzly bears by supporting high value plant species. These plant species can also be found at substantial densities in riparian forested habitats and under the canopy of, as well as within the small openings in, mature and old forests. Coarse woody debris associated with forests supports insects and small mammals that can also be valuable food sources for grizzly bears.

Forestry impacts on habitat suitability at the stand scale occur through the alteration of important habitats as a result of harvesting and/or silviculture. Livestock impacts on habitat suitability at the stand scale may occur through the alteration of important habitats as a result of grazing and trampling.

*Strategies*

- a) Do not convert non-productive forest sites (e.g., willow, alder and other non-productive brush sites, avalanche chutes) into productive forest (i.e., through silvicultural intervention). *The intent of this strategy is to continue to allow productive forest areas that are harvested, burned by wildfire, destroyed by pests, etc. to be returned to productive forest. Sites with a site index are excluded from this strategy.*
- b) Encourage stewardship of high value grizzly bear habitat on non-Crown lands (e.g., through agreements with landowners).
- c) Avoid livestock impacts to forage availability in important grizzly bear habitats (Table 2) through range use planning. Where necessary, implement measures such as salt placement, alternate water development, drift fencing, herding or altering periods of livestock use. *The intent of this strategy is that impacts on ranchers will be minimized. Specific instances and habitats impacted will be identified through field information and monitoring.*
- d) Where practical, incorporate important grizzly bear habitats (Table 2) into Wildlife Tree Patches (WTPs) and Old Growth Management Areas (OGMAs) provided they meet the objectives for WTPs and OGMAs.
- e) Consider grizzly bear foraging needs in the management of coarse woody debris (CWD) by retaining larger pieces within the limits of current provincial policy.

**Table 2. Important Grizzly Bear Habitat Types and their Season of Use in the North Cascades Grizzly Bear Population Unit.<sup>1</sup>**

Habitat Types	Season of Use		
	Spring *	Summer	Fall **
Riparian areas, including wetlands (Appendix 4: Table 5)	X	X	X
Avalanche tracks and run out zones	X	X	X
<i>Hedysarum</i> and glacier lily complexes	X	X	
Sub-alpine parkland meadows		X	X
Berry producing sites (Appendix 4: Table 6)		X	X

\***Spring** refers to the period after bears emerge from their dens - late March through April until spring habitats are no longer used – usually the end of June.

\*\***Fall** refers to the period when berries become abundant - often late July/early August through to November.

<sup>1</sup> The habitats described are generalizations and are intended to be verified/identified where necessary through fieldwork and/or mapping by qualified personnel (see 4.1.5, strategy a, b and g).

#### 4.1.2 Habitat Effectiveness at the Stand Scale

Grizzly bears are easily disturbed by human activities. This disturbance can result in grizzly bears being unable to make use of otherwise suitable habitats. Roads result in direct habitat loss, however, even more importantly, they often have significant levels of human activity associated with them that can displace grizzly bears from nearby areas. By providing a 50 m buffer of cover between roads and important habitats, the impact on the habitat effectiveness of these sites is reduced. Despite such buffers, habitat effectiveness will still be impacted (albeit to a lesser degree) which is why at the landscape scale an emphasis is placed on the maintenance of areas >500 m from open roads where direct impacts on effectiveness are all but eliminated (see 4.1.4, strategy a).

In areas where human activity occurs, grizzly bears preferentially select foraging areas within approximately 200 m of effective hiding cover. By managing moderate to high capability habitats to ensure that hiding cover is provided, grizzly bears can make more effective use of harvested cutblocks.

Grizzly bears can be displaced from important habitats by the presence of livestock as well as the human activity that accompanies livestock grazing. If grizzly bears are not displaced from these habitats, the result may be an increased risk of conflicts (see 4.4). Where livestock displacement of grizzly bears is a potential issue on Crown land this should be managed through range use planning.

##### *Strategies*

- a) Avoid<sup>1</sup> constructing roads or recreational trails in, or within 50 m of, important grizzly bear habitats (Table 2) during layout and design. Where avoidance is not practical, implement mitigation measures under 4.1.2, strategy b or c).
- b) Where roads currently exist, or are constructed in the future, in important grizzly bear habitats (Table 2) minimize<sup>2</sup> potential displacement of grizzly bears by means such as:
  - deactivating roads (ideally to 4X4 impassable) or restricting human access (e.g., gates, physical blockage, regulation or other means), and/or
  - constructing temporary roads or bridges in preference to permanent, and/or
  - minimizing right-of-way width, and/or
  - managing roadside vegetation to promote visual screening (e.g., by maintaining shrubs and understory vegetation as well as non-merchantable species, establishing WTPs as buffers (provided these buffers meet WTP objectives), partial removal harvesting of buffers and/or promoting the accelerated regeneration of harvested forest through planting of larger stock etc.) and/or
  - scheduling activities to avoid season(s) of use.

---

<sup>1</sup> In this document, “avoid” means “to refrain from or prevent the occurrence of an event, taking into consideration technical and economic feasibility, as well as economic and environmental costs of alternative actions”.

<sup>2</sup> In this document, “minimize” means “to reduce to the smallest possible amount, size, extent or degree, taking into consideration technical and economic feasibility, as well as economic and environmental costs of alternative actions”.

- c) Where recreational trails currently exist, or are constructed in the future, in important grizzly bear habitats (Table 2) consider minimizing potential displacement of grizzly bears by:
  - re-routing trails, and/or
  - implementing temporary or permanent closures.
- d) In moderate and high capability habitats<sup>1</sup> design cutblocks along permanently open roads such that distance to cover (vegetation or terrain capable of hiding a bear) is less than 200 m by retaining shrubs, understory and/or WTPs within the block.
- e) Establish WHAs for grizzly bears as described in the IWMS (see 4.1.3, strategy b).
- f) Avoid livestock displacement of grizzly bears from important habitats (Table 2) through range use planning (see 4.1.1, strategy c). *This strategy is included in the event that conflicts develop as bear numbers increase or new information is obtained. We are currently unaware of such conflicts. The intent of this strategy is to find solutions within the current framework for planning range use.*

#### 4.1.3 Habitat Suitability at the Landscape Scale

At the landscape scale it is important to maintain a balance over time of spring, summer and fall habitats to support grizzly bears. Forestry can impact habitat suitability at the landscape scale if extensive areas of mid-seral forest (i.e., closed canopy, high stocking density, conifer dominated) are created which tend to have little productive herb and shrub understory forage plants.

In the North Cascades GBPU forage supply analysis has found that spring habitats are naturally limited and as a result maintaining spring habitat is of particular importance (Gyug 2003).

In order to determine whether or not a particular habitat is limiting in an area it is necessary to conduct an analysis of forage supply. The results of a forage supply analysis can then be used to guide the application of specific strategies that seek to maintain and, where possible, increase the supply of the most critical habitats for the area in question.

#### *Strategies*

- a) Develop grizzly bear guidelines for stocking standards in the Cascades Forest District.
- b) Where forage supply is of concern for any season (see strategy 4.1.5, strategy a), maintain important habitats (Table 2) by:
  - establishing WHAs for grizzly bears as described in the IWMS (see 4.1.2, strategy a), and,
  - managing riparian site series to lower target or minimum stocking levels.<sup>2</sup> *In the Chilliwack Forest District see Appendix 11 in the Vancouver Forest Region Establishment to Free Growing Guidebook and in the Okanagan-Shuswap Forest District see the Okanagan-Shuswap Land and Resource Management Plan, Grizzly Bear Habitat Resource Management Zone. For the Cascades Forest District see strategy a.*
- c) Where forage supply during the fall is of concern (see 4.1.5, strategy b), maintain areas for berry production within berry producing site series (Appendix 4: Table 6) by:

---

<sup>1</sup> Defined by ecosystem mapping (see 4.1.5, strategy a) or, where this is not available, Broad Ecosystem Inventory.

<sup>2</sup> For silvicultural purposes, reduced target stocking standards are intended to better reflect what natural stocking would be on these sites and facilitate greater productivity for bear food plants.



- employing, unless not practicable, designated skid trails, over snow harvesting, and/or cable harvesting,
- managing stocking levels on berry producing site series to promote berry production,<sup>1</sup> *In the Chilliwack Forest District see Appendix 11 in the Vancouver Forest Region Establishment to Free Growing Guidebook and in the Okanagan-Shuswap Forest District see the Okanagan-Shuswap Land and Resource Management Plan, Grizzly Bear Habitat Resource Management Zone. For the Cascades Forest District see 4.1.5, strategy a.*
- avoiding adverse site preparation (e.g., broadcast soil disturbance; broadcast herbicide application),<sup>1</sup>
- planning for voids (<1 ha) through mid-seral stages by cluster planting, juvenile spacing and thinning,<sup>2</sup>
- increasing habitat suitability on sites with moderate to high capability habitat through timber harvesting, prescribed burns or reduced action to control wildfires, juvenile spacing, thinning or other techniques.

#### 4.1.4 Habitat Effectiveness at the Landscape Scale

Habitat effectiveness for grizzly bears is significantly impacted by human disturbance associated with roads. At the landscape scale areas >500 m from roads (referred to as “Core Areas”) receive greater use by grizzly bears than areas in close proximity to roads. Very limited use (as well as increased mortality risk) tends to occur in areas where open road density (ORD) is high (i.e., >0.6 km/km<sup>2</sup>).

There is no known minimum threshold for the proportion of a landscape in Core Area above which recovery would be certain or below which it would be impossible. Based on the available information, all else being equal, (notably habitat quality, seasonal distribution of habitats and the size and degree of fragmentation of Core Areas), landscapes with higher proportions of Core Area and lower proportions of high ORD area are more likely to support the recovery and maintenance of grizzly bear populations. Until more information is available for the grizzly bears in the North Cascades the intent of the strategies under this objective is to minimize both the loss of Core Area and the increase in high ORD area based on 1999 levels (Table 3, Table 4).

For comparison purposes in the U.S. portion of the North Cascades (the North Cascades Recovery Zone), federal lands are managed for no net loss of Core Area. In the Cabinet-Yaak and Selkirk Mountain Recovery Zones the minimum baseline for Core Area is 55% of the land area and in the Northern Continental Divide Recovery Zone the minimum baseline is 68% (R. Naney pers. comm.).

These targets were based on the amount of Core Area within the home ranges of radio collared female grizzly bears within each recovery zone (IGBC 1998). Differences in the level of Core

---

<sup>1</sup> Site preparation or other soil disturbance can negatively affect berry production particularly *Vaccinium* but also *Sambucus*, *Rubus* and *Sorbus sitchensis*.

<sup>2</sup> By managing for greater “openness” in reforested berry producing stands these stands will produce berries for a longer period of time than would occur with application of normal reforestation techniques.

Area within female grizzly bear home ranges among the recovery zones may be related to habitat quality, land management designation, bear density, or other factors and baselines may change as determined by research or management needs.

### *Strategies*

- a) Plan access to minimize, and where possible avoid, the net loss of Core Area from 1999 levels (Table 3, Figure 9) by sub-unit and begin planning to stabilize Core Area at 1999 levels as soon as possible.<sup>1,2</sup> *Ideally new Core Areas would be established prior to accessing existing Core Area, would be of equal or greater habitat value and would remain as a Core Area for a minimum of 10 years. Where possible the preference is to maintain or recover large, contiguous blocks of Core Area (i.e., >1 000 ha).*
- b) Plan access to minimize, and where possible avoid, the net increase from current 1999 levels in the proportion of high ORD area by sub-unit (Table 4, Figure 10) and begin planning to stabilize the proportion of area with high ORD at 1999 levels as soon possible.<sup>1</sup>
- c) As a means of implementing strategies a&b, complete access management plans in consultation with First Nations, stakeholders and the general/local public for the sub-units in the “spine” area as soon as possible with the highest priority being given to the Tulameen Sub-unit. *The intent of this strategy is to undertake access planning in a manner that does not impact short or long-term timber supply or derogate the legal rights of access to resource users.*
- d) Apply access management measures such as signage, road deactivation, gating or physical blockages and/or legal restrictions as necessary and appropriate to implement strategies a-c. *The intent of this strategy is that access control measures such as gating and legal restrictions will only be implemented following adequate public consultation. The repair and/or replacement of vandalized access control structures established specifically to benefit grizzly bears will not be the responsibility of tenure holders.*
- e) As a means of implementing strategies a&b in areas where access management plans have not yet been completed (see strategy c):
  - identify and, where possible based on consultation with stakeholders, eliminate or deactivate roads (with a priority on creating Core Area), *(The intent of this strategy is that for all existing roads/trails, no new access controls, access restrictions, or deactivation considered necessary by the Recovery Team as part of implementation of the Recovery Plan shall be implemented unless (i) first communicated in advance to local First Nations, local stakeholders, and public and (ii) the Liaison Committee has been consulted. It is expected that tenure holders and others that build and maintain roads will also apply this strategy and will consult with First Nation and local stakeholders through existing processes (e.g., Forest Stewardship Plans for forest licensees.))*
  - avoid establishing a history of public use on newly constructed roads or road segments within Core Areas wherever practical, *(The intent of this strategy is that non-recreational uses of these roads (e.g., mining and livestock grazing) would be allowed.)*

---

<sup>1</sup> While recognizing the need for some flexibility to allow for completion of existing approvals and commitments as well as unforeseen events (e.g., wildfire, insect outbreaks).

<sup>2</sup> The Recovery Team will be responsible for calculations of Core Area and high Open Road Density area which will normally be done on an annual basis.

- close all new roads within Core Areas to public motorized access in a legally designated manner (i.e., they should be available for legislated or permitted industrial access only),
  - establish physical access controls (e.g., gates) on all new roads where they significantly impact Core Area and,
  - mark (through signs, map notations) all new roads as temporary and, where appropriate, closed to public motorized use.
- f) Avoid connecting road networks over the height of land between watersheds. *The intent of this strategy is to facilitate access management and not to eliminate options for drainages where such an approach is the only practicable means of obtaining access.*
- g) Consider using aerial harvesting, a two pass system, relaxing green-up requirements and/or allowing larger cutblocks (i.e., >40 ha) where necessary to achieve access targets.
- h) In appropriate areas, consult with stakeholders on establishing regulations to limit the recreational use of motorized vehicles in Core Areas from April 1 to October 31.
- i) Where possible, minimize human disturbance (e.g., repeatedly landing helicopters) in Core Areas from April 1 to October 31.
- j) Minimize adverse impacts on grizzly bears resulting from the issuance of Crown land tenures or sales.

#### 4.1.5 Information Needs

In order to make the best possible decisions regarding the management of grizzly bear habitat it is critical to understand its seasonal and spatial distribution. It is also important to determine how current levels of human use are distributed within grizzly habitat. The following strategies seek to improve our understanding of grizzly bear habitat in the North Cascades GBPU as well as human impacts on the ability of grizzly bears to use this habitat.

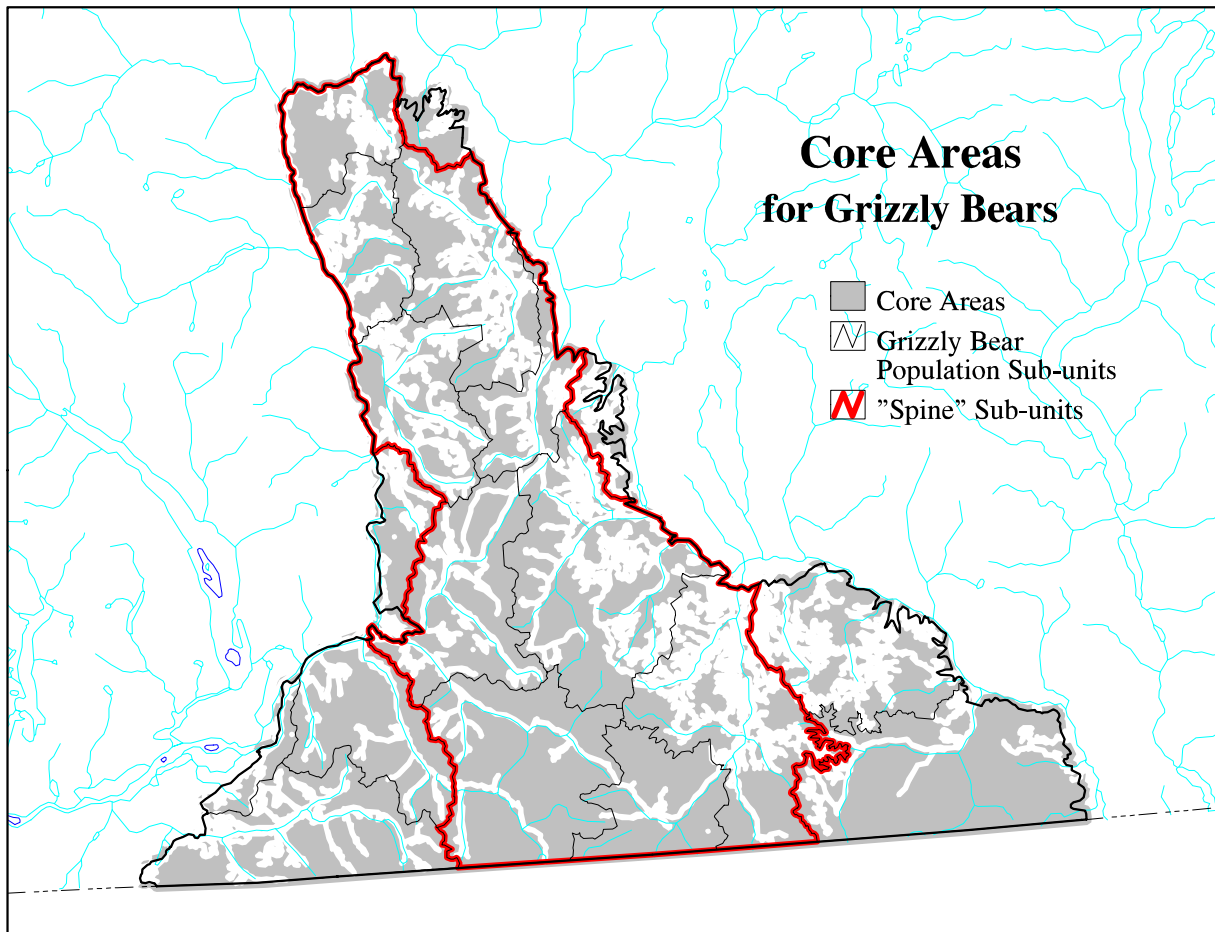
##### *Strategies*

- a) Complete ecosystem mapping for the North Cascades GBPU at a preferred scale of 1:20 000 (minimum scale of 1:50 000) and assign seasonal habitat capability and suitability ratings.
- b) Verify the accuracy of habitat mapping and the productivity of these habitats for grizzly bears.
- c) Model short and long-term forage supply based on habitat suitability to identify sub-units of concern based on ecosystem mapping and to inform future re-evaluation of the Recovery Plan goal.
- d) Assess levels of human use (e.g., traffic volume and seasonal timing, use of recreational trails) within the North Cascades GBPU.
- e) Develop a model of habitat effectiveness and assess whether or not additional measures to maintain or improve habitat effectiveness are necessary in order to achieve the recovery goal.
- f) Undertake research on grizzly bear habitat use, movements and response to human activity in the North Cascades.
- g) Establish permanent vegetation plots throughout the North Cascades GBPU (with an emphasis on berry-producing areas) to monitor annual variation in forage production.
- h) Develop guidelines for identifying important grizzly bear habitats in the field (Table 2).

**Table 3. Percentage of Core Area in each “Spine” Sub-unit.**

<b>Sub-unit</b>	<b>Core Area (km<sup>2</sup>)</b>	<b>Total Sub-unit Area (km<sup>2</sup>)</b>	<b>% Core Area</b>
Ainslie	199.3	389.1	51.3
Anderson	218.4	522.1	41.9

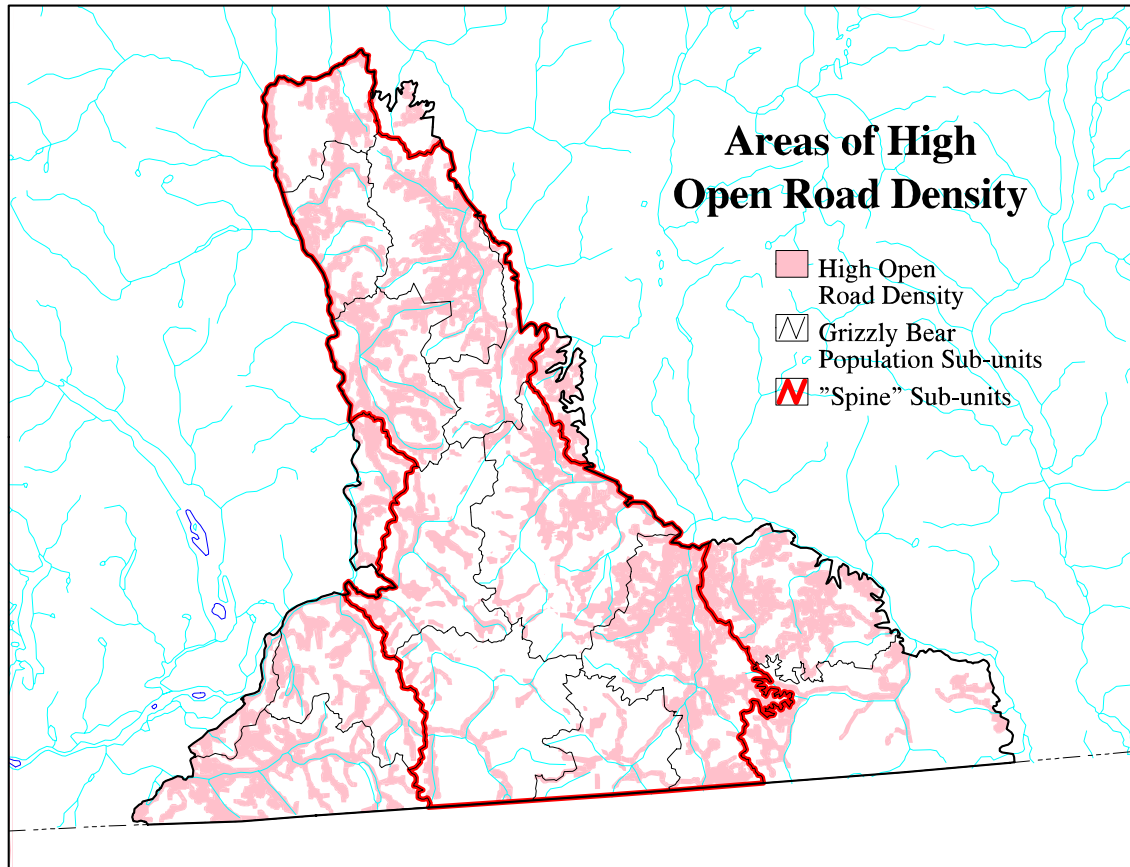
Coldwater	175.4	316.3	55.5
Coquihalla	444.0	680.6	65.2
Manning East	384.1	432.3	88.8
Manning West	750.0	892.1	84.1
Similkameen	401.7	904.0	44.5
Siska	207.8	357.6	58.1
Spus	360.4	691.9	52.1
Tulameen	574.0	1 063.2	54.0
<b>Total</b>	<b>3 715.0</b>	<b>6 249.1</b>	<b>59.4</b>



**Figure 9. Core Areas in the North Cascades Grizzly Bear Population Unit.**

**Table 4. Percentage of High Open Road Density (ORD) Area in each “Spine” Sub-unit.<sup>1</sup>**

Sub-unit	High ORD Area (km <sup>2</sup> )	% High ORD Area	Total Sub-unit Area (km <sup>2</sup> )
Ainslie	178.6	45.9	389.1
Anderson	293.9	56.3	522.1
Coldwater	127.8	40.4	316.3
Coquihalla	278.4	40.9	680.6
Manning East	96.8	22.4	432.3
Manning West	190.9	21.4	892.1
Similkameen	533.4	59.0	904.0
Siska	139.8	39.1	357.6
Spius	332.8	48.1	691.9
Tulameen	515.7	48.5	1 063.2
<b>Total</b>	<b>2 688.1</b>	<b>43.0</b>	<b>6 249.1</b>



**Figure 10. Areas Where Open Road Density Exceeds 0.6km/km<sup>2</sup>.**

**4.2 Objective 2: Prevent population fragmentation and maintain genetic diversity**

The viability of small populations is increased if linkages can be maintained to other populations. Small, isolated populations are much more vulnerable to random or catastrophic

<sup>1</sup> based on a Moving Windows Analysis with 30-m pixel size and a 0.98 km<sup>2</sup> window

events and may suffer reduced survival and/or reproduction through the effects of inbreeding and the loss of genetic diversity.

The following strategies seek to maintain, and where possible restore, linkages for grizzly bears between the North Cascades and Stein-Nahatlatch GBPUs, to maintain and restore linkages within the North Cascades GBPU and to increase the genetic diversity of the North Cascades grizzly bear population.

#### **4.2.1 Linkage With Other Grizzly Bear Populations and Within the GBPU**

The North Cascades grizzly bear population is isolated from the nearest population – the Stein-Nahatlatch GBPU – by the major transportation corridor and associated human developments and activity along the Fraser Canyon. Within the North Cascades GBPU the Coquihalla toll freeway (which has been fenced for much of its length) and, to a lesser extent, the Hope-Princeton Highway, likely represent at least partial barriers to grizzly bear movements.

##### *Strategies*

- a) Identify and assess the viability of potential linkages across the Coquihalla toll freeway, the Hope-Princeton Highway and the Fraser Canyon.
- b) Assess current human activities within potential linkages and consider measures available to mitigate conflicts with grizzly bears.
- c) Consult with relevant agencies, local governments, First Nations and stakeholders on the designation of potential linkages as Grizzly Bear Management Areas (GBMAs) under the *Wildlife Act*.
- d) Minimize adverse impacts on grizzly bears resulting from the issuance of Crown land tenures or sales within linkage GBMAs.
- e) Incorporate measures to accommodate grizzly bear use of linkage GBMAs within any treaties encompassing these areas.
- f) Pursue partnerships with non-governmental organizations to promote stewardship of private lands within linkage GBMAs.
- g) Consult with the Ministry of Transportation, the Ministry of Forests, BC Parks and local governments on measures to increase the ability and/or willingness of grizzly bears to cross segments of highway within linkage GBMAs and to reduce the risk of mortality on roads (i.e., signage, crossing structures, lower speed limits, no stopping areas, provision of cover adjacent to the highway, carcass removal, bear-proof garbage cans etc.).
- h) Make linkage GBMAs a high priority for the application of strategies under objective 4&5 (conflict and mortality).

#### **4.2.2 Genetic Diversity**

Due to the small size of the population, and the fact that it appears to have been isolated from other grizzly bear populations for many decades, scientists believe that the genetic diversity of grizzly bears in the North Cascades has declined dramatically from historic levels. This loss of genetic diversity may already be resulting in reproductive and survival impacts due to inbreeding and is one of several possible explanations for the failure of the population to recover in the absence of active recovery efforts over the last few decades. The loss of genetic diversity also has the potential to impact the capacity of a population to respond to changes in the environment.

### *Strategies*

- a) Augment the population genetically through translocation of grizzly bears from other GBPU (as per objective 3).
- b) Establish a repository for grizzly bear genetic material from the North Cascades GBPU and surrounding areas as well as a database for genetic analyses completed to facilitate monitoring and research.

### **4.3 Objective 3. Increase the number of grizzly bears**

The current estimated number of grizzly bears in the North Cascades is very small and will likely not survive over the long-term without the addition of animals from other areas. When populations are small and spread over large areas, the risk of the population being lost due to either a slow decline or one or more catastrophic or random events increases dramatically.

There are no viable grizzly bear populations contiguous to the North Cascades, and therefore no bears likely to contribute toward recovery by natural dispersal. Augmentation is the only alternative available for increasing the number of grizzly bears in the North Cascades over the short-term. This technique has previously been used in Austria, France, Italy and the Cabinet/Yaak Ecosystem in the United States to supplement small populations of grizzly/brown bears (Servheen et al. 1995, Clark et al. 2001).

### *Strategies*

- a) Develop a plan for a population augmentation trial in consultation with the Liaison Committee (see 4.6) by July 1, 2005 for approval by the Minister of Water, Land and Air Protection including the following elements:
  - the identification of source population(s) that are not be currently open to grizzly bear hunting and are ecologically similar to the augmentation area,
  - specific release sites that are located in high quality grizzly bear habitat with low levels of human activity,
  - measures to prevent and, if necessary respond to, conflicts with humans,
  - a two phase process involving three animals the first year augmentation occurs and, depending upon success as determined by the Recovery Team in consultation with the Liaison Committee, up to three more animals in the period until March 31, 2009,
  - an allowance for additional animals to be transplanted into the North Cascades either to replace any that die from unnatural causes or in the event that information is obtained that clearly indicates that more aggressive augmentation is required prior to the end of the trial for conservation reasons (i.e., the population is found to be declining) as determined by the Recovery Team in consultation with the Liaison Committee,
  - an allowance for augmentation to be stopped following the first phase if information is obtained that clearly indicates that the population is increasing in size naturally and augmentation is not required as determined by the Recovery Team in consultation with the Liaison Committee,
  - monitoring protocol including communications with First Nations, stakeholders and the public,
  - research objectives and methodology,
  - an annual review involving both the Recovery Team and the Liaison Committee,

- a comprehensive review in the final year of the trial, and,
- a definition of trial “success” (i.e., a description of trial outcomes that the Recovery Team and the Liaison Committee would consider successful).

*Grizzly bears with any history of conflicts with humans will not be used for population augmentation. Grizzly bears may, however, be translocated into (or back into) the North Cascades from surrounding areas such as the Okanagan as a proactive measure which will not be considered to constitute population augmentation.*

- b) The research objectives of conducting the population augmentation trial should include:
- obtaining information on whether grizzly bears can safely be captured, transported to, and released in, the North Cascades,
  - obtaining information on whether grizzly bears transplanted into the North Cascades have an unacceptably high likelihood of becoming involved in conflicts with humans,
  - obtaining information on the survival and reproductive rates of grizzly bears transplanted into the North Cascades and whether these vital rates are sufficient to contribute to population recovery,
  - obtaining information on grizzly bear ecology in the North Cascades (home range size, habitat use, food habits, response to human activities etc.),
  - obtaining information on how grizzly bear population augmentation impacts other species and land uses.
- c) Augmentation will only occur in the Manning West and Manning East sub-units unless other areas are specifically included in the augmentation plan (see strategy a). These sub-units were chosen according to the following criteria:
- sub-units with a high proportion of Core Area,
  - sub-units with a high proportion of protected area,
  - sub-units with high proportions of high to moderate suitability habitat available through several seasons based on the best available mapping or expert opinion, and
  - sub-units with a low likelihood of grizzly bear/human conflicts based on current human use and settlement patterns and current or planned access levels.
- d) Augmentation will not occur until the Recovery Team, in consultation with the Liaison Committee, is satisfied that the necessary work to reduce the likelihood of grizzly bear/human conflicts in the release area(s) has been completed, including a hazard assessment for Cascade Recreation Area, E.C. Manning Provincial Park and Skagit Valley Provincial Park.

#### **4.4 Objective 4. Minimize the potential for grizzly bear/human conflict**

Grizzly bears occupy approximately 85% of British Columbia and represent a very minor risk to human safety. Each year on average approximately 2.5 people are injured by grizzly bears and 0.3 are killed (or one person every three years) in the province. Even when recovery is achieved (approximately 150 grizzly bears) the density of grizzly bears in the North Cascades will be relatively low – just over 1.5 grizzly bears/100 km<sup>2</sup>.

In an average year in British Columbia there are approximately 300 complaints arising from actual or potential conflicts with grizzly bears. Given that there are estimated to be a minimum of



17 000 grizzly bears in the province, this represents an average of  $\leq 1.8$  complaints/100 grizzly bears annually. In fact, the actual level or rate of grizzly bear/human conflicts in any given area is much more closely linked to human behaviour than to the size or density of its grizzly bear population.

With responsible management of attractants such as garbage, education of people working or recreating in grizzly bear habitat and proactive management of individual grizzly bears that are at risk of becoming involved in conflicts, it is possible to substantially reduce the level of conflicts that occur. Measures that seek to reduce conflicts with grizzly bears would also be expected to reduce conflicts with black bears which are much more numerous and are involved in approximately 30 times more complaints on average each year in British Columbia.

Regardless of the relatively low risk to human safety represented by grizzly bears it is critical to minimize this risk to the greatest degree possible while allowing for the conservation of this sensitive species. It is also important to minimize any damage to private property that might be caused by grizzly bears despite the fact that this risk is also expected to be relatively small. Minimizing grizzly bear/human conflicts is a significant conservation issue as well. Although human injury is quite rare, conflicts between grizzly bears and humans commonly result in the grizzly bears involved being destroyed which is particularly problematic for small populations such as the North Cascades (see 4.5.). The following strategies seek to reduce the potential for such conflicts and outline the response to those that do occur.

### *Strategies*

- a) Develop and implement an interactive public information and education program to prevent and minimize grizzly bear/human conflicts that builds on existing programs to the degree possible and that specifically considers non-English speaking audiences. *This program should include bear awareness and safety information including advice for responding to encounters with bears.*
- b) Consider potential grizzly bear/human conflicts and options for mitigation prior to authorizing new land-use activities such as commercial recreation, range use, forestry activity, mining exploration and mineral extraction. *The intent of this strategy is not to unduly impede the process for authorizing these land use activities. Issues to be considered include the management of attractants and training of staff.*
- c) Conduct bear hazard assessments on existing trails and campgrounds and consider modifications where hazards are moderate or high.
- d) Reduce the availability of non-natural attractants such as garbage to grizzly bears by bear-proofing garbage cans, dumpsters and landfills.
- e) Require bear-proofing of remote industrial or research camps.
- f) Promote discussions with private landowners, ranchers and highway maintenance crews regarding disposal of carcasses in grizzly bear habitat. If necessary, implement carcass redistribution program in the spring to distract grizzly bears from potential conflict areas. *Carcass redistribution has been used successfully in other jurisdictions (e.g., Montana and Alberta) to reduce conflicts between grizzly bears and livestock.*
- g) Do not allow sheep grazing on Crown land within the North Cascades GBPU. *Experience in other areas has demonstrated that conflicts between grizzly bears and sheep are best avoided by not permitting sheep grazing on public lands where grizzly bears are likely to be present.*

- h) Establish a grizzly bear response team to respond to and manage grizzly bear/human conflicts.
- i) Develop criteria for responding to grizzly bear/human conflicts (i.e., when aversive conditioning will be used, when animals will be translocated and when animals will be destroyed).
- j) Where practical, use aversive conditioning to respond to potential grizzly bear/human conflicts.
- k) Where translocation is necessary the preference is to relocate animals within the North Cascades GBPU or, if this is not practical, to another threatened population.
- l) Where practical, instrument grizzly bears involved in, or at risk of becoming involved in, conflicts with humans so that their movements can be monitored and so that management actions can be taken where necessary (see strategy h-k).
- m) Encourage the establishment of a program to compensate livestock producers for any losses due to grizzly bear depredation that might occur.

#### **4.5 Objective 5. Minimize human-caused mortality of grizzly bears**

Given the small numbers of grizzly bears remaining in the North Cascades, preventing avoidable deaths (especially of adult females) is critical to population recovery. The greatest risk of human-caused mortality in the North Cascades is likely related to potential grizzly bear/human conflicts (see 4.4) although road and train kills, poaching, deaths resulting from capturing and handling animals and mistaken identity kills by black bear hunters are also potential sources of mortality. The following strategies seek to reduce the likelihood of human-caused mortality of grizzly bears in the North Cascades GBPU.

##### *Strategies*

- a) Develop and implement an information and education program to minimize grizzly bear mortality (see 4.4, strategy a).
- b) Develop and implement a program to reduce the likelihood of mistaken identity kills by black bear hunters (e.g., by preparing a brochure on bear species identification).
- c) Ensure that personnel experienced in the capture, immobilization and handling of grizzly bears are directly involved in any research, translocation or augmentation efforts.
- d) Develop, implement and coordinate a proactive enforcement program to deter poaching and investigate all known incidents of grizzly bear mortality.
- e) Work with the Ministry of Transportation, Ministry of Forests, BC Parks, industry and others to reduce the risk of grizzly bears injury or death from vehicle collisions (see 4.2.1, strategy g).

#### **4.6 Objective 6. Increase scientific and public knowledge of, and support for, grizzly bear recovery**

Recovery of the North Cascades grizzly bear population will require public, institutional and stakeholder support. The scientific knowledge of North Cascades grizzly bears is quite incomplete, largely because the population is currently so small and dispersed and therefore difficult to study. The following strategies seek to increase the scientific knowledge of grizzly bears in the North Cascades in order to guide recovery efforts and to increase the public's understanding, involvement in, and support for, recovery efforts.

## *Strategies*

- a) Establish a Liaison Committee comprised of local First Nations and stakeholder representatives appointed by the Director of the Biodiversity Branch, Ministry of Water, Land and Air Protection to work with the Recovery Team during the implementation of the plan. The role of the Liaison Committee will be:
- to review and comment on implementation of the Recovery Plan,
  - to improve communication between First Nations, stakeholders, the general public and the Recovery Team regarding issues and concerns that arise during Recovery Plan implementation and monitoring,
  - to improve coordination between recovery plan implementation and relevant planning processes (e.g., strategic land use plans and access management plans),
  - to resolve issues associated with Recovery Plan implementation,
  - to review the results of monitoring conducted under the Recovery Plan (see Section 5), and,
  - to evaluate the effectiveness of the Recovery Plan, and where necessary, to develop revisions jointly with the Recovery Team.

*The Liaison Committee will meet with the Recovery Team semi-annually or more frequently as determined by the Director of the Biodiversity Branch. The Liaison Committee will receive minutes of Recovery Team meetings and any documents or analyses undertaken by or for the Recovery Team. The Liaison Committee and Recovery Team will receive notification of each other's meetings and may attend them as observers as they see fit. The Liaison Committee may request independent scientific review or input on key recovery issues through the Director of the Biodiversity Branch.*

- b) Develop and implement a grizzly bear information and education program (see 4.4, strategy a) that includes First Nations, local businesses, schools, community organizations and the general public.
- c) Develop a Communications Strategy to guide efforts to keep First Nations and stakeholders informed of, and involved in, recovery efforts.
- d) Develop a Questions & Answers brochure on grizzly bear recovery in the North Cascades GBPU. The brochure should include information on grizzly bear recovery efforts, grizzly versus black bear identification, reporting sightings and avoiding conflicts with bears.
- e) Improve the current system for reporting and tracking grizzly bear sightings and encourage greater participation by staff, First Nations, stakeholders and the public.
- f) Encourage research on grizzly bears and grizzly bear habitat in the North Cascades through the development of a research plan that includes an implementation strategy as well as the use of traditional ecological knowledge. Priority areas for research include:
- population demographics,
  - habitat use,
  - movements within the North Cascades and between the North Cascades and other areas,
  - population size required for natural increase to occur,
  - population size that can be supported by available suitable and effective habitat,
  - viable population size, and,
  - the implications for grizzly bear habitat effectiveness and mortality risk of motorized use based on the intensity and timing of these activities.
- g) Undertake fundraising to support the implementation of the Recovery Plan.

h) Publicize the results of monitoring, plan implementation and research efforts annually.

#### **4.7 Objective 7. Facilitate interagency cooperation and management**

Since the North Cascades is a cross-border population it is vital that efforts to recover this population in British Columbia be closely coordinated with the work being undertaken in the State of Washington. It is equally important that the various agencies responsible for the management of grizzly bears and their habitats in British Columbia continue to work together to achieve recovery. Similarly recovery actions for grizzly bears should be coordinated where necessary with work being done on the conservation of other species in the North Cascades. The following strategies are intended to ensure that cooperation and coordination between agencies and conservation efforts directed at other species is maintained and enhanced.

##### *Strategies*

- a) Coordinate grizzly bear recovery work with other species conservation initiatives.
- b) Produce an annual newsletter on the status of recovery efforts in the North Cascades and that acknowledges financial support for the implementation of the Recovery Plan.
- c) Brief the regional Interagency Management Committees annually on the status of recovery efforts in the North Cascades.
- d) Maintain membership on the Recovery Team from the North Cascades Subcommittee of the IGBC and Recovery Team membership on the North Cascades Ecosystem Subcommittee.

## 5 MONITORING, EVALUATION AND PLAN REVIEW

It is critical that monitoring be conducted on an on-going basis to assess the success of the various strategies in the Recovery Plan in contributing toward progress on achieving the plan's goal. This monitoring should include an indicator(s) of population size and distribution, habitat conditions (including human impacts), grizzly bear mortalities and the number and nature of any conflicts.

Each year the Recovery Team will be responsible for summarizing the results of monitoring activity and Recovery Plan implementation in an annual progress report to be made available to local First Nations, stakeholders and the public. The Recovery Team will provide the annual progress report to the Liaison Committee and will be responsible for adjusting the implementation of the Recovery Plan as necessary in consultation with the Liaison Committee.

If the Recovery Team concludes that the Recovery Plan should be revised as a result of information and experience gained through Recovery Plan implementation and/or monitoring, the Liaison Committee will be consulted and their comments included with a recommendation to the Director of the Biodiversity Branch. If the Liaison Committee believes that scientific peer review and input on monitoring techniques and results or proposed revisions to the Recovery Plan is necessary, it can request assistance through the Director of the Biodiversity Branch.

A review and revision of the Recovery Plan should be undertaken by the Recovery Team in consultation with the Liaison Committee beginning in April, 2008. The target date for commencing implementation of a revised plan should be April, 2009.

### 5.1 Population Size and Distribution

In assessing the success of recovery efforts in the North Cascades GBPU from a conservation perspective the most important issue is the actual status of the grizzly bear population itself. Direct monitoring of the total number of grizzly bears in the North Cascades GBPU is not feasible. Therefore, observations of female grizzlies with cubs of the year will be used as an indicator of total population size. In addition, the total number of reliable grizzly bear sightings (all sexes and age classes) will be tracked.

#### *Indicators*

- a) The running three year average number of confirmed, unduplicated sightings of female grizzly bears with cubs of the year observed (see Appendix 3). *The Recovery Plan goal will be considered to have been achieved when this indicator exceeds an average of nine confirmed, unduplicated sightings of female grizzly bears with cubs of the year observed.*
- b) The total number and distribution of reliable grizzly bear sightings received annually.

### 5.2 Habitat Conditions

Maintaining effective habitat for grizzly bears is fundamental to achieving recovery. The most significant factor concerning habitat effectiveness is the level of impact associated with roads. The productivity of grizzly bear foods – particularly berry production – varies substantially from year to year and can assist in explaining changes in grizzly distribution or activity.

*Indicators*

- a) The proportion of each sub-unit in the “spine” area that is within Core Areas.
- b) The habitat capability, seasonal habitat value, spatial distribution and sizes of Core Areas within each sub-unit in the “spine” area.
- c) The proportion of each sub-unit in the “spine” area that is within high ORD areas.
- d) The productivity and timing of development of grizzly bear food plants at permanent vegetation plots.

**5.3 Grizzly Bear Mortalities**

It is critical to track any human-caused mortality of grizzly bears from the North Cascades as limiting these losses will be vital to achieving recovery. Natural mortalities of grizzly bears that are documented will also be tracked to assist in assessing population status.

*Indicators*

- a) The number, age, sex, cause and location of grizzly bear mortalities in, and within 10 km of, the North Cascades GBPU (except any mortalities within another GBPU).

**5.4 Grizzly Bear/Human Conflicts**

Monitoring the incidence of grizzly bear/human conflicts will be important in providing managers with the information needed to identify problem areas and to take steps to prevent future conflicts.

*Indicators*

- a) The number, nature and location of grizzly bear/human conflicts in and within 10 km of the North Cascades GBPU (except any mortalities within another GBPU).

**5.5 Recovery Plan Implementation**

The Recovery Team, in consultation with the Liaison Committee, will develop and apply additional indicators for Recovery Plan implementation and compliance as deemed appropriate.

## 6 GLOSSARY

**Augmentation** – the addition of animals to increase an existing population

**Bear Hazard Assessment** – a technical review of the potential risk of bear/human conflict including both natural bear habitat use and the management of non-natural attractants

**Coarse Woody Debris** – dead or dying wood on the forest floor in all stages of decay (including above-ground logs, exposed roots and large fallen branches), that is >10 cm diameter

**Core Area** – an area >10 ha in size and >500 m from any open road

**Extirpated** – a species that no longer exists in the wild in a particular area but that continues to exist in the wild elsewhere

**Grizzly Bear Population Unit** – a defined area encompassing an individual grizzly bear population whose boundaries are based on barriers to grizzly bear movement and/or ecological differences

**Habitat Capability** – the ability of habitat, under optimal conditions to provide the life requisites of a species, irrespective of its current conditions

**Habitat Effectiveness** – the actual ability of habitat to provide the life requisites of a species given the suitability of the habitat and the human disturbance and fragmentation of the area

**Habitat Suitability** – the ability of habitat, under its current conditions to provide the life requisites of a species, irrespective of human impacts aside from those that directly alter the habitat itself

**Identified Wildlife** – those species at risk that the Deputy Minister of Water, Land and Air Protection, or person authorized by that deputy minister, designates as requiring special management attention under the *Forest Practices Code of British Columbia Act* or the *Forest and Range Practices Act*

**Landscape Unit** – an area of land and water delineated by topographic or geographic features that is used for long-term planning of resource management activities

**Motorized Trail** – a trail that receives use by motorized off-road vehicles

**Motorized Off-Road Vehicles** – vehicles designed or adapted to be used on roads and trails that are not reasonably and prudently driveable with a conventional passenger car or light-duty trucks

**Non-natural Attractants** – any artificial food source that may attract bears to an area such as garbage, human foodstuffs, animal feed and dead livestock

**Non-productive Forest Sites** – habitats that are incapable of growing a merchantable stand of commercial forest within a reasonable length of time without silvicultural intervention

**Old Growth Management Area** – an area that is legally established to maintain or restore structural old growth attributes

**Open Road** – a road without restriction on motorized vehicle use or that receives use by conventional passenger cars or light-duty trucks (*note that gated roads that receive use by conventional passenger cars or light-duty trucks are considered “open”*)

**Open Road Density** – the linear distance of open roads per square kilometer

**Recovery** – recovery is the process of planning and implementing priority actions to reduce the risk of a species becoming extinct or being extirpated from a particular area

**Road** – all created or evolved routes that are reasonably and prudently driveable with a conventional passenger car or light-duty trucks

**Restricted Road** – a road on which motorized vehicle use is restricted seasonally and/or that has an effective physical obstruction

**Riparian Habitat** – the area adjacent to a watercourse, lake, river, stream or wetland that includes both area dominated by continuous high soil moisture content and the adjacent upland vegetation that exerts an influence on it

**Threatened Population** – a Grizzly Bear Population Unit in which the current minimum population estimate is less than 50% of the area’s estimated minimum habitat capability

**Trail** – all created or evolved routes that are not reasonably and prudently driveable with a conventional passenger car or light-duty trucks (*note that this definition does not exclude other motorized use such as off-road vehicles*)

**Unoccupied Area** – an area of historic grizzly bear range that adult female grizzly bears are not currently considered to maintain long-term home ranges in and/or that is not considered suitable for the recovery of a grizzly bear population

**Wildlife Habitat Area** – a mapped area of land that the Deputy Minister of Water, Land and Air Protection, and the Chief Forester, or their designates, have determined is necessary to meet the habitat requirements of one or more species of identified wildlife under the *Forest Practices Code of British Columbia Act* or the *Forest and Range Practices Act*

**Wildlife Tree** – a standing live or dead tree with special characteristics that provides valuable habitat for wildlife

**Wildlife Tree Patch** – an area specifically identified for the retention and recruitment of suitable wildlife trees under the *Forest Practices Code of British Columbia Act* or the *Forest and Range Practices Act*



## 7 REFERENCES

- Almack, J.A., W.L. Gaines, P.H. Morrison, J.R. Eby, R.H. Naney, G.F. Wooten, S.H. Fitkin and E.R. Garcia. 1993. North Cascades grizzly bear ecosystem evaluation: final report. Interagency Grizzly Bear Comm. 169pp.
- Aune, K., and W. Kasworm. 1989. Final Report East Front Grizzly Bear Study. Montana Dep. Fish, Wildl. and Parks. 332pp.
- Blanchard, B.M. 1983. Grizzly bear – habitat relationships in the Yellowstone area. Int. Conf. on Bear Research and Manage. 5:118-123.
- Blanchard, B.M. 1987. Size and growth patterns Yellowstone grizzly bears. Int. Conf. on Bear Research and Manage. 7:99-107.
- Blanchard, B.M., and R.R. Knight. 1991. Movements of Yellowstone grizzly bears. Biol. Conserv. 58:41-67.
- Brannon, R.D., R.D. Mace, and A.R. Dood. 1988. Grizzly bear mortality in the Northern Continental Divide Ecosystem. Montana. Wildl. Soc. Bull. 16:262-269.
- Bunnell, F.L., and D.E.N. Tait. 1981. Population dynamics of bears - implications. Pages 75-98 in T.D. Smith and C. Fowler, eds. Dynamics of large mammal populations. John Wiley and Sons, New York, NY. 477pp.
- Bunnell, F.L., and A.N. Hamilton. 1983. Forage digestibility and fitness in grizzly bears. Int. Conf. on Bear Research and Manage. 5:179-185.
- Churcher, C.S., and A.V. Morgan. 1976. A grizzly bear from the middle Wisconsin of Woodbridge, Ontario. Can. J. Earth Sciences. 13:341-347.
- Clark, J.D., D. Huber, and C. Servheen. In press. Bear reintroduction: lessons and challenges. Ursus.
- Craighead, J.J., and J.A. Mitchell. 1982. Grizzly bear (*Ursus arctos*). Pages 515-556 in J.A. Chapman and G.A. Feldhamer, eds. Wild mammals of North America: biology, management, economics. John Hopkins Univ. Press, Baltimore, MD. 1147pp.
- Glenn, L.P. 1980. Morphometric characteristics of brown bears of the central Alaska Peninsula. Int. Conf. on Bear Research and Manage. 4:313-319.
- Green, R.N., and K. Klinka. 1994. Field guide to site identification and interpretation for the Vancouver Forest Region. Ministry of Forests, Victoria, BC. 285pp.

- Grizzly Bear Scientific Panel. 2003. Management of grizzly bears in British Columbia: a review by an independent scientific panel. Report prepared for the Ministry of Water, Land and Air Protection, Victoria, BC. 90pp.
- Gyug, L.W. 1998. Assessment of grizzly bear populations, habitat use and timber harvest mitigation strategies in the North Cascades Grizzly Bear Population Unit, British Columbia. Okanagan Wildlife Consulting. Westbank, BC. 38pp.
- Gyug, L.W. 2003. North Cascades grizzly bear: foraging suitability, habitat effectiveness analysis, and Wildlife Habitat Area proposals. Okanagan Wildlife Consulting. Westbank, BC. 38pp.
- Harris, R.B. 1986. Modeling sustainable harvest rates for grizzly bears. Unpublished manuscript. 17 pp.
- Herrero, S.M. 1972. Aspects of evolution and adaptation in American black bears (*Ursus americanus* Pallas) and brown and grizzly bears (*U. arctos* Linne) of North America. Int. Conf. on Bear Research and Manage. 2:221-231.
- Herrero, S.M. 1985. Bear Attacks: Their Causes and Avoidance. Lyons & Burford, New York, NY. 287pp.
- Hovey, F.W., and B.N. McLellan. 1996. Estimating population growth of grizzly bears from the Flathead River drainage using computer simulations of reproductive and survival rates. Canadian Journal of Zoology 74:1409-1416.
- Interagency Grizzly Bear Committee. 1987. Grizzly bear compendium. Interagency Grizzly Bear Comm. and Natl. Wildl. Fed., Washington, D.C. 540pp.
- Interagency Grizzly Bear Committee. 1998. Interagency grizzly bear committee task force report on grizzly bear/motorized access management. Interagency Grizzly Bear Comm., Missoula, MT. 8pp.
- Kingsley, M.C.S., J.A. Nagy and R.H. Russell. 1983. Patterns of weight gain and loss for grizzly bears in northern Canada. Int. Conf. on Bear Research and Manage. 5:174-178.
- Knight, R., J. Beecham, B. Blanchard, L. Eberhardt, L. Metzgar, C. Servheen and J. Talbot. 1988. Equivalent population size for 45 adult females. Report of the Yellowstone Grizzly Bear Population Task Force. Natl. Park Serv., Bozeman, MT. 7pp.
- Kurten, B. 1968. Pleistocene Mammals of Europe. World Naturalist Series. Weidenfield and Nicholson, London, UK. 317pp.
- Kurten, B., and E. Anderson. 1974. Association of *Ursus arctos* and *Arctodus simus* (Mammalia:Ursidae) in the late Pleistocene of Wyoming. Breviora 426:1-6.

- Lloyd, D. 1990. Guide to site identification and interpretation for the Kamloops Forest Region. Ministry of Forests, Victoria, BC. 399 p.
- Mace, R.D., J.S. Waller, T.L. Manley, L.J. Lyon, and H. Zuuring. 1996. Relationships among grizzly bears, roads, and habitat in the Swan Mountains, Montana. *J. Applied Ecol.* 33:1395-1404.
- Mace, R.D., and J.S. Waller. 1997. Spatial and temporal interaction of male and female grizzly bears in northwestern Montana. *J. Wildl. Manage.* 61:39-52.
- MacHutchon, A.G., S. Himmer, and C.A. Bryden. 1993. Khutzeymateen Valley grizzly bear study: final report. Ministry of Environment, Lands and Parks, Wildl. Rep. No. R-25. 105pp.
- McLellan, B.N. 1994. Density-dependent population regulation of brown bears. Pages 3-14 *in* M. Taylor, ed. Density-dependent population regulation of black, brown, and polar bears. Int. Conf. on Bear Research and Manage. Monogr. Ser. No. 3. 43pp.
- McLellan, B.N., and D.M. Shackleton. 1988. Grizzly bears and resource-extraction industries: effects of roads on behavior, habitat use and demography. *J. Applied Ecol.* 25:451-460.
- Mattson, D.J. 1990. Human impacts on bear habitat use. Int. Conf. on Bear Research and Manage. 8:33-56.
- Miller, S.D. 1990. Population management of bears in North America. International Conference on Bear Research and Management 8:357-373.
- Miller, S.D., G.C. White, R.A. Sellers, H.V. Reynolds, J.W. Schoen, K. Titus, V.G. Barnes, Jr., R.B. Smith, R.R. Nelson, W.B. Ballard, and C.C. Schwartz. 1997. Brown and black bear density estimation in Alaska using radio-telemetry and replicated mark-resight techniques. Wildl. Monogr. No. 133. 55pp.
- Nagy, J.A.S., and M.A. Haroldson. 1989. Comparisons of some home range and population parameters among four grizzly bear populations in Canada. Int. Conf. on Bear Research and Manage. 7:227-235.
- Nelson, R.A., G.E. Folk, Jr., E.W. Pfeiffer, J.J. Craighead, C.J. Jonkel, and C.L. Stiger. 1983. Behavior, biochemistry, and hibernation in black, grizzly, and polar bears. Int. Conf. on Bear Research and Manage. 5:284-290.
- Pearson, A.M. 1975. The northern interior grizzly bear *Ursus arctos* L. Can. Wildl. Serv. Rep. Ser. No. 34. Ottawa, ON. 86 pp.
- Peek, J.M., M.R. Pelton, H.D. Picton, J.W. Schoen, and P. Zager. 1987. Grizzly bear conservation and management: a review. Wildl. Soc. Bull. 15:160-169.
- Rausch, R.L. 1963. Geographic variation in size in North American brown bears, *Ursus arctos* L., as indicated by condylobasal length. *Can. J. Zool.* 41:33-45.

Servheen, C., W.F. Kasworm, and T.J. Their, 1995. Transplanting grizzly bears *Ursus arctos horribilis* as a management tool – results from the Cabinet Mountains, Montana USA. *Biol. Cons.* 71:261-268.

Storer, T.I., and L.P. Tevis. 1955. *California Grizzly*. Univ. Nebraska Press, Lincoln, NB. 335pp.

Sullivan, P.T. 1983. A preliminary study of historic and recent reports of grizzly bears, *Ursus arctos*, in the North Cascades area of Washington. Washington Dep. Fish and Game, Olympia, WA. 32pp.

United States Department of Interior, Fish and Wildlife Service. 1993. Grizzly bear recovery plan (revised). United States Fish and Wildl. Serv., Denver, CO. 181pp.

## 8 APPENDICES

### 8.1 Appendix 1. Grizzly Bear Biology

#### 8.1.1 Taxonomy and Evolution

The North American brown bears (*Ursus arctos*) include two subspecies: the grizzly bear (*Ursus arctos horribilis*) and the Kodiak bear (*Ursus arctos middendorffii*) (Rausch 1963). Recent taxonomic classifications consider the North American brown bears and the Eurasian brown bear to be the same species.

The evolutionary history of the family *Ursidae* encompasses a 20 million year period. The Etruscan bear (*Ursus etruscus*) which lived in the forests of Asia about 2 million years ago was ancestor to present day bears (Herrero 1972). Changes in environment from warm forest to a treeless landscape following repeated glacial periods gave rise to the cave bear (*Ursus spelaeus*) in Europe and the brown bear in Asia. Around 50 000 years ago brown bears crossed the treeless Bering Land Bridge and spread across North America (Churcher and Morgan 1976).

A major trend in the early evolution of bears was the development of an adaptation that allowed a carnivore to feed relatively efficiently on vegetation (Kurten 1968). Bears began as small-bodied carnivores but eventually became large-bodied omnivores (Herrero 1985). The brown bear specifically evolved away from forest adaptations toward characteristics that allowed this species to utilize a more open habitat. Brown bears developed morphological, physiological, and behavioral adaptations that enabled them to exploit the newly developed tundra-like habitat following glacial periods. Today brown bears depend on a variety of habitats for their seasonal needs.

#### 8.1.2 Physical Characteristics

Grizzly bears exhibit considerable variation in size and color of local populations and individuals sometimes leading to problems in classification between grizzly and black bears. Guard hairs are often silver-tipped to varying degree hence the name "grizzly." The muscle structure has developed for strength, quickness, and speed. Grizzly bears are often distinguished from black bears by their humped shoulders, longer and curved claws, smaller ears, and a concave face profile.

Male grizzly bears are considerably larger than females (Glenn 1980). In addition to variations between sexes, there is considerable variation in body size and weight between geographic regions. Weight data from various studies are available in IGBC (1987). There appears to be a clinal variation in weight with bears in coastal regions being heavier than bears in the more interior regions of the continent (Bunnell and Tait 1981). Rausch (1963) noted that the larger size of coastal bears appeared to be related with distribution of salmon and luxuriant coastal vegetation.

Grizzly bears undergo an annual cycle in weight, gaining in summer and losing during winter denning (Pearson 1975, Kingsley et al. 1983). Grizzly bears can gain weight at the rate of up to 1 kg/day during the spring to fall season (Blanchard 1983, Bunnell and Hamilton 1983). Male

bears lose 8-22% of their fall weight over winter while females lose 18-40% (Blanchard 1987, Kingsley et al. 1983).

### **8.1.3 Reproduction**

There is clear evidence that the female grizzly bear exhibits delayed implantation (Craighead and Mitchell 1982). Although mating occurs during spring (generally May and June), and estrous may last 30 days, blastocysts do not implant in the uterine wall until autumn. Implantation is affected by the physical condition of the female. Grizzly bears are polygamous; a female may mate with several males during a single breeding period. Female grizzly bears are not sexually mature until age four or five and exhibit prolonged care of their young. Generally, females attend to their litter for two years. Litter size may vary from 1-4 cubs although two cubs is most common. Grizzly bears may live to be 40 years old (Storer and Tevis 1955).

### **8.1.4 Movements**

Grizzly bears are a wide-ranging species and mobility is an important aspect of grizzly bear biology (IGBC 1987). As such grizzly bear populations require large tracts of suitable habitat wherein individuals can move freely and establish home ranges.

The home range size of grizzly bears depends on many factors such as the juxtaposition of seasonal habitats, population density, age and reproductive status, and social relationship with other members of the population (IGBC 1987). Home range size may also vary among years in relation to food abundance and may enlarge as the animal ages (Blanchard and Knight 1991). Generally males have larger home ranges than females. It is advantageous for male ranges to include as many female ranges as possible, and it is advantageous for females to rear young in relatively small areas with maximum security and food resources. Sub-adult males generally disperse from the maternal home range whereas females often establish home ranges near their mother (IGBC 1987, Craighead and Mitchell 1982). In coastal areas female home ranges may be smaller than 25km<sup>2</sup> while in low productivity areas in the interior male home ranges can exceed 2 500km<sup>2</sup> (IGBC 1987).

### **8.1.5 Habitat Selection and Food Habits**

The grizzly bear is an omnivore, and as such displays great flexibility in its use of habitats and foods. Grizzly bears are opportunistic feeders and will scavenge or prey on most available prey species. Where prey is less abundant, vegetal matter, roots, and bulbs are important during spring (IGBC 1987). After leaving their dens during spring, bears may utilize relatively low elevation habitats although individual variation occurs. During spring, grizzly bears often forage in riparian areas, avalanche chutes, or low elevation ungulate winter ranges. As summer progresses, bears often move to higher elevations and shift to fruit. In the fall, where salmon resources are available bears will congregate to feed on these migrating fish. Where salmon are not available bears continue to feed on vegetal matter until denning.

Grizzly bears hibernate during winter months generally in high-elevation excavated dens (above and below tree line). Bears generally enter their dens from late September to early November and remain in dens until early March to early May. During the denning period, body temperature is only slightly reduced while heart rate and respiration are more markedly depressed. Several weeks of lethargy occur prior to and subsequent to denning (Nelson et al. 1983).

### **8.1.6 Human Impacts**

There is very little overlap between occupied grizzly bear habitat and high human densities (Mattson 1990). Unoccupied but suitable habitat occurs in many parts of North America where human use has not been compatible with the survival of bears. Large-scale habitat conversion to human settlement, hydroelectric development, and agriculture have reduced bear use of many inter-mountain valleys. Timber harvest and fire control policies have also contributed to large-scale conversion of habitat by altering the mosaic of habitats and forest successional stages required by bears.

Forest roads and other transportation corridors (e.g., highways, utility corridors, railways) affect grizzly bears in several ways (McLellan and Shackleton 1988, Mace et al. 1996). Displacement effects can extend up to 500 m or more from roads. Grizzly bears are also vulnerable to mortality in areas with roads. Measures such as temporary roads, narrow right-of-way width and seasonal use restrictions can reduce the impacts associated with roads.

Impacts on grizzly bears in areas where livestock (particularly sheep but occasionally cattle also) are grazed include direct mortality through control actions to protect property and illegal kills, habitat loss or modification, displacement, or direct competition (IGBC 1987). Historically, conflict with livestock was a major cause of population decline or local extirpation throughout the grizzly bear's former range (Storer and Tevis 1955). Depredation behavior is believed to be a learned process as not all bears in proximity to grazing allotments kill livestock. Current research and management strategies to address conflicts between livestock and bears shows promise (M. Madel pers. comm.).

## **8.2 Appendix 2. Description of land use activities in the North Cascades GBPU**

### **8.2.1 Forestry**

Many of the smaller communities surrounding the North Cascades GBPU are dependent on forest and range resources as their primary source of income. The Ministry of Forests administers both the forest and range resources located within the provincial forests, and is responsible for timber harvesting, silviculture, range, recreation, and fire protection activities. The North Cascades GBPU includes portions of the following Forest Districts: Chilliwack, Cascades and Okanagan-Shuswap.

Logging has occurred within the North Cascades GBPU for over 100 years, however, it has only been in the last 40 to 50 years that significant areas have been harvested for timber. Changes to timber harvesting technology and markets in the last 30 years have seen an increase in mid to high elevation harvesting. Road construction has preceded harvesting in most if not all cases, leaving an extensive road network available for other users.

In all three districts, a significant proportion of the timber harvested comes from mature and old stands. Over time, as these stands are harvested and replaced, the annual volume harvested may decline down to a lower, steady, long term level. It is anticipated, however, that actual area of timber harvested annually will remain relatively constant through time.

### **8.2.2 Mining**

The North Cascade GBPU covers an important mining region of B.C. Geologically it straddles the juncture of the Coast Mountain and Intermontane belts, represented by a complex assemblage of predominantly northwest-trending belts of volcanic, sedimentary, intrusive and metamorphic rocks. The complex geological evolution has produced many kinds of metallic and industrial mineral deposits that have sustained exploration activity and mining for nearly 150 years.

The principal commodities found in the North Cascades GBPU include copper, gold, silver, lead, zinc, nickel, molybdenum, coal, placer gold, limestone, jade, stone (decorative and structural), sand and gravel, silica, and others. The Coquihalla gold belt, parallel to the Hozameen fault, and the Nicola belt, extending from Princeton north beyond the Highland Valley, are the two most important mineral belts from the standpoint of known discoveries, past mine production, and future potential. Diligent prospecting continues to result in new discoveries annually and in newly discovered extensions of known deposits. For some commodities, such as coal, improved market economics and technology may re-establish interest in known deposits.

In late 1999, subsurface tenures covered 79 790 ha (8.14%) of the North Cascades GBPU. Mineral tenures covered 76 733 ha (7.83%); placer tenures covered 5 457 ha (0.56%); and coal tenures covered 2 801 ha (0.29%). There are currently no petroleum and natural gas, or geothermal tenures. Natural gas pipelines traverse the area bringing northeastern gas to mainland markets. *Land Act* tenures for sand and gravel extraction were not documented but are believed to cover <1% of the North Cascades GBPU.



The Ministry of Energy and Mines maintains a mineral occurrence database (MINFILE) for the province that documents all known mineral occurrences and classifies them according to their significance. Data for the North Cascades GBPU show 394 mineral occurrences that include: 3 producers; 12 developed prospects; 59 past producing mines; 98 prospects; and 222 showings. Further analysis of the MINFILE database indicates that 8 of the 18 (44%) Grizzly Bear Population Sub-units in the North Cascades contain deposits with established mineral reserves.

### **8.2.3 Agriculture**

Ranching and agriculture are prevalent in the eastern portions of the North Cascades GBPU including approximately 20 ranches in operation (i.e., in the Cascades and Okanagan-Shuswap Forest Districts), however there are no ranches or other agriculture activities in the Chilliwack Forest District portion of the GBPU. A small portion of the grazing land in the North Cascades GBPU is privately held, however, most of the grazing is on Crown land under a variety of tenures.

Crown land tenures are primarily held for livestock cow/calf or yearling spring, summer, and/or fall grazing. Calving in grizzly spring range, and sheep grazing conflicts with grizzly are not currently known to be a problem in the North Cascades. Ranchers have reported bear predation or injury to cattle, but typically these events have been traced to black bears. Gyug (1998) notes one recorded kill of a grizzly bear in defense of cattle in the late 1970s. Crown range cattle grazing tenures including alpine areas and cattle damage to riparian areas may be in conflict with grizzly bear management objectives in a few areas.

Other significant agriculture activities adjacent to or within grizzly habitat include vegetable, and fruit growing operations, ginseng farms and hay operations. Again, all these activities take place in the eastern part of the recovery area.

### **8.2.4 Residential**

Several residential communities exist within or immediately adjacent to the boundaries of the North Cascades GBPU. In the eastern portion of the GBPU, there are only three major population centres located close to the boundaries including Merritt (1996 pop. 7 631), Princeton (1996 pop. 2 826) and Keremeos (1996 pop. 1 167 with approximately 4 500 in the surrounding area). As well, in the east there are a number of small rural communities including: Tulameen, Coalmont, and Eastgate. These communities consist of well under 300 people located in close proximity to valuable, occupied grizzly habitat. There are no documented grizzly conflicts associated with people or property in Merritt, Princeton or Keremeos.

There are also a few small residential communities in or near the western portion of the North Cascades GBPU. The largest community located immediately on the western boundary is Hope (1996 pop. 6 312). The population of Hope is predicted to increase to over 9 000 people by 2008. Boston Bar (1996 pop. 329 including rural areas to south) is located in the Fraser Canyon on the western boundary of the GBPU with a further 1 500 or more First Nation's persons living on Indian Reserves in the area. Population growth in this region over the next 10 years is expected to be minimal. Other small communities include Sunshine Valley (1996 pop. 112), Othello (1996 pop. 42), and Chilliwack Lake and area (1996 estimate, 200). Small population increases are

expected in these settlement areas. Lytton (1996 pop. 322) is located on the north west boundary of the GBPU at the confluence of the Fraser and Thompson rivers.

### **8.2.5. Transportation and Utility Corridors**

There are currently three major transportation routes through the North Cascades GBPU: the Fraser Canyon, occupied by the Trans-Canada Highway (Highway #1) and the Canadian Pacific and Canadian National railways; the Coquihalla toll freeway (Highway #5); and the Hope-Princeton Highway (Highway #3) (Figure 3).

The Fraser River forms the western boundary of the North Cascades GBPU and is a natural corridor through this mountainous area. The Cariboo Wagon Road was opened through the Fraser Canyon in the mid 1860s providing the first access through the area on anything other than foot trails. The Canadian Pacific Railway was completed through the area in 1886. The Fraser Canyon is currently the site of the Trans-Canada Highway as well as two major railway lines.

The first formally established trail through the North Cascades was the Hudson Bay Brigade Trail from Tulameen to Hope located just north of what is now E.C. Manning Provincial Park. It was used from 1849 to 1860, after which it fell into disuse because of the opening of the Dewdney Trail further south in 1860. The first permanent road through the Cascade Mountains was completed in 1949 when the Hope-Princeton Highway was opened through Allison Pass and E.C. Manning Provincial Park.

The Kettle Valley Railway was built through the North Cascades in the 1910s along the Coquihalla and Coldwater Rivers but was abandoned in 1959. This same route currently holds the major oil and natural gas pipelines that supply the lower mainland of B.C. The Coquihalla Highway, a multilane express toll highway, was completed through this route in 1986. Most of its route through the Coldwater valley has also been fenced on both sides with 2.4 m height page-wire fencing to prevent deer from wandering onto the highway (this fencing further restricts bear movement or dispersal opportunities).

There is also an extensive network of secondary roads built primarily for timber extraction in the North Cascades. Outside of the E.C. Manning and Cathedral Provincial Park areas, there is no point in the North Cascades GBPU that is more than 7 km from a road or clearcut (Gyug 1998).

### **8.2.6 Recreation and Protected Areas**

The human population within the North Cascades GBPU is very small, however, it is adjacent to the most densely populated portions of B.C. with approximately 68% of British Columbia's population of 3 724 500 (1996 census) within a day trip's reach of the area. The North Cascades GBPU is about halfway between the dense population centre of the Lower Mainland where about 2 000 000 people reside and the next most populous area on mainland B.C. in the Okanagan Valley where about 450 000 people reside.

The opening of the Coquihalla Highway in 1986 has meant that all areas of the North Cascades are now within an easy single day's outing from the two major population centres on the mainland of B.C. Road systems developed for timber harvesting are also extensively used by

recreationists. This easy access and low level of settlement means that the North Cascades provides many opportunities for wilderness-type experiences and activities. The demands for recreation in the form of camping, hiking, mountain biking, horseback riding, riding snow machines and all terrain vehicles, fishing, hunting, river rafting, hang gliding, mountain climbing and wildlife viewing among other pursuits have increased substantially over the last 10 years. This trend is expected to continue for the next 20 years as the populations of the Lower Mainland and Okanagan continue to increase.

Recreational opportunities in the North Cascades GBPU are numerous, with the main providers being BC Parks, the Ministry of Forests and private individuals. The Environmental Stewardship Division of the Ministry of Water, Land and Air Protection is responsible for the administration of the provincial parks, recreation areas and ecological reserves. The Ministry of Forests administers recreation sites and trails within the provincial forests. The various Forest Districts provide maintained camping facilities and a complex of trails throughout the GBPU. A number of the trail systems have historical interest and are maintained by various societies and associations on more of an ad hoc basis. The Trans Canada Trail initiative plans to upgrade some of the existing trail systems and build new trails over the next several years. Dispersed-use camping (unauthorized) outside of the Forest Service designated campsites is common throughout the year, and occurs where access is provided.

Within the North Cascades GBPU 19.6% of the area is within provincial parks or other protected areas. The largest of these protected areas include E.C. Manning (665.6 km<sup>2</sup>), Cathedral (328.9 km<sup>2</sup>), Skagit (279.7 km<sup>2</sup>), Chilliwack Lake (92.7 km<sup>2</sup>) and International Ridge (18.7 km<sup>2</sup>) Provincial Parks; Cascade (176.3 km<sup>2</sup>) and Coquihalla (57.9 km<sup>2</sup>) Recreation Areas; Snowy Protected Area (258.9 km<sup>2</sup>); and Liumchen Creek Ecological Reserve (21.8 km<sup>2</sup>). The smaller provincial parks include Skihist, Coldwater River, Alexandra Bridge, Nicolum River, and part of Cultus Lake. The smaller recreation areas include Coquihalla River and Coquihalla Canyon while smaller Ecological Reserves include Skihist, Stoyoma Creek, Whipsaw Creek, Skagit River Cottonwoods, Skagit River Forest, Skagit River Rhododendrons, Ross Lake and Chilliwack River.

Within the North Cascades GBPU, there are 10 vehicle-access campgrounds with a total of 727 campsites within provincial parks. About half of these campsites are within E.C. Manning Provincial Park.

The Chilliwack Forest District provides recreational opportunities to the public through nine recreation sites in the Chilliwack River Valley and one at Silver Lake in the Silver/Skagit River drainage. Public recreation within the North Cascades GBPU in the Cascades Forest District is provided through access to 19 recreation sites and 12 recreation trails (including the Hudson Bay Brigade Heritage Trail and the Centennial Trail). The Okanagan-Shuswap Forest District has two recreation sites and one recreation trail within the GBPU.

The North Cascades GBPU is covered by portions of readily available and up-to-date hiking or recreation guidebooks. These describe both hiking trail and logging road access opportunities within the area.

There are a number of commercial recreation providers that use the area for hang gliding, guided tours, river rafting and mountaineering. Horseback guide/outfitter trips also occur within some portions of the GBPU.

### **8.2.7 Hunting**

Grizzly bear hunting has not been permitted within the North Cascades GBPU since 1974. There are spring and fall hunting seasons for black bears throughout the area. Regulations for other big game species vary within the management units that overlap the GBPU, but there are general open hunting seasons only for mule or black-tailed deer bucks in the fall, and for coyote and cougar through the winter. There are additional hunting seasons for white-tailed deer, antlerless mule deer, moose, elk and wolves in parts of the area, some of which are managed by lottery-type award of limited entry hunting permits. There are limited entry hunts for bighorn sheep in a small portion of the North Cascades. There are also various small game and trapping seasons in most of the North Cascades.

As of 1996 there were only three guide-outfitters in the North Cascades licensed to conduct the hunts that are required by regulation for out-of-province hunters. Most of the hunters in the area are B.C. resident hunters. During the fall hunting seasons, virtually all accessible roads are used by hunters. The only large areas of public land closed to hunting are E.C. Manning Provincial Park and the core area of Cathedral Provincial Park. The other large provincial parks and recreation areas are open to hunting within legal seasons. Ecological Reserves and the smaller provincial parks are closed to hunting as are areas within 400 m of Highway #3 (the Hope-Princeton) through the North Cascades. Areas within 400 m of Highway #5 (the Coquihalla freeway) are closed to use of single-projectile firearms. The Chilliwack River road from Thurston Correctional Institute east to Chilliwack Lake is closed to the discharge of firearms for 800 m either side of the road. Hunting is allowed in the headwaters of the Tulameen River and in upper Vuich Creek area but only by non-motorized access.

### **8.2.8 First Nations**

There are 20 First Nations bands with interests in the North Cascades GBPU. The Shx'wow'hamel, Peters, Popkum, Cheam, Yakwekwioose, Tzeachten and Soowahlie bands are members of the Sto:lo Nation. The Cook's Ferry, Coldwater, Lower Nicola, Nooaitch, Shackan and Siska bands are members of the Nicola Tribal Association. The Upper Similkameen and Lower Similkameen bands are members of the Okanagan Nation Alliance and the Nicomen band is affiliated with the Fraser Canyon Indian Administration. The Boothroyd, Boston Bar and Spuzzum bands are members of the Nlaka'pamux Nation Tribal Council and the Yale band is independent.

### **8.3 Appendix 3. Description of the Method Used to Estimate Grizzly Bear Population Size in the North Cascades GBPU**

Since it is not possible to directly count or monitor the total number of grizzly bears in the North Cascades GBPU an “indicator” was selected to aid in determining when the population goal has been achieved. The indicator is a running three year average of confirmed observations of female grizzly bears with cubs of the year. The population goal will be considered to have been achieved when this indicator exceeds nine confirmed female grizzly bears with cubs of the year. This target was developed using the following assumptions which are adopted from the Grizzly Bear Recovery Plan for the United States (U.S. Fish and Wildlife Service, 1993):

- The running three year average is based on the reproductive cycle of female grizzly bears (each adult female would normally be with cubs of the year for one out of every three years and therefore one third of adult females will be with cubs of the year on average in any given year).
- The running average of females with cubs of the year can be multiplied by three to estimate the minimum number of adult females in the population.
- It is estimated that only 60% of females with cubs of the year will be detected and confirmed in any given year (Aune and Kasworm, 1989).
- It is assumed that the proportion of subadults to adults in the North Cascades grizzly bear population is 1:1 (IGBC, 1987).
- It is assumed that the proportion of females to males in the North Cascades grizzly bear population is 1:1 (IGBC, 1987).
- Based on the assumptions above the proportion of adult females in the population is estimated to be 28.4% (using the method of Knight et al., 1988).

A target of sighting at least eight females with cubs should correspond to a population of approximately 150 grizzly bears using the method of Knight et al. (1988) as follows:

- 9 females with cubs of the year seen divided by 0.6 (sightability correction factor) = 15 total females with cubs of the year;
  - $15 \times 3 = 45$  adult females;
- 45 divided by 0.284 (the estimated proportion of adult females in the population) = a minimum of 158 grizzly bears.

It should be noted that a number of these assumptions may be inaccurate for grizzly bears in the North Cascades (e.g., 60% sightability of females with cubs of the year) and should be refined through research over the course of the Recovery Plan’s implementation. However, at this time it remains the best information available.

#### 8.4 Appendix 4. Riparian and Berry Producing Habitats in the North Cascades GBPU.

**Table 5. Riparian Habitats in the North Cascades Grizzly Bear Population Unit.**

Biogeoclimatic Subzone Variants	Site Series
CWHdm	07, 12, 14, 15
CWHds1	07, 12
CWHms1	06, 11
CWHvm2	07, 08, 11
CWHxm1	07, 12, 14, 15
ESSFdc2	08
ESSFmw	08
ESSFxc	08
IDFdk1	06
IDFdk2	06, 07
IDFww	06, 07
IDFxh2	08
MHmm2	06, 07, 09
MSdm2	07
MSxk	09
PPxh2	07

**Table 6. High and Moderate Berry (principally *Vaccinium*) Producing Site Series in the North Cascades Grizzly Bear Population Unit.<sup>1</sup>**

Biogeoclimatic Subzone Variants	High Berry Productivity Site Series	Moderate Berry Productivity Site Series
CWHdm	12	
CWHms1	02, 01, 05, 06, 11	03
CWHvm2	03, 01, 05, 06, 07, 09, 10, 11	02, 04
ESSFdc2		05
ESSFmw	04, 05	01, 02, 06, 07, 08
MHmm2	02, 01, 04, 05, 06, 07, 08	03, 09

<sup>1</sup> Principal sources are Lloyd *et al.* (1990) and Green and Klinka (1994).

**8.5 Appendix 5. Total and Core Area Habitat Capability by Sub-unit in the North Cascades GBPU in 1999**

**Table 7. Total and Core Area Habitat Capability by Sub-unit in the North Cascades Grizzly Bear Population Unit in 1999.<sup>1</sup>**

<b>Sub-unit</b>	<b>Capability Class<sup>2</sup></b>	<b>Total Area (sq km)</b>	<b>Core Area (sq km)</b>	<b>Total Capability</b>	<b>Core Capability</b>
<i>Ainslie</i>	2	199	99	10.2	5.1
<i>Ainslie</i>	3	0	0	0.0	0.0
<i>Ainslie</i>	4	132	45	0.8	0.3
<i>Ainslie</i>	5	56	54	0.1	0.1
<i>Ainslie</i>	6	2	0	0.0	0.0
		<b>389</b>	<b>199</b>	<b>11.0</b>	<b>5.4</b>
<i>Anderson</i>	2	339	108	17.3	5.5
<i>Anderson</i>	3	74	39	1.9	1.0
<i>Anderson</i>	4	69	35	0.4	0.2
<i>Anderson</i>	5	38	36	0.0	0.0
<i>Anderson</i>	6	2	0	0.0	0.0
		<b>522</b>	<b>218</b>	<b>19.7</b>	<b>6.8</b>
<i>Ashnola</i>	2	4	2	0.2	0.1
<i>Ashnola</i>	3	613	526	15.9	13.7
<i>Ashnola</i>	4	142	134	0.8	0.8
<i>Ashnola</i>	5	231	144	0.2	0.1
<i>Ashnola</i>	6	1	1	0.0	0.0
		<b>991</b>	<b>808</b>	<b>17.2</b>	<b>14.7</b>
<i>Chilliwack</i>	2	379	143	19.3	7.3
<i>Chilliwack</i>	3	229	183	6.0	4.7
<i>Chilliwack</i>	5	113	112	0.1	0.1
<i>Chilliwack</i>	6	19	10	0.0	0.0
		<b>741</b>	<b>448</b>	<b>25.4</b>	<b>12.2</b>
<i>Coldwater</i>	2	162	82	8.3	4.2
<i>Coldwater</i>	3	76	42	2.0	1.1
<i>Coldwater</i>	4	4	2	0.0	0.0
<i>Coldwater</i>	5	73	50	0.1	0.1
		<b>316</b>	<b>175</b>	<b>10.3</b>	<b>5.3</b>

<sup>1</sup> “spine” sub-units in italics

<sup>2</sup> see Table 8

**Table 7 (cont.)**

<b>Sub-unit</b>	<b>Capability Class</b>	<b>Total Area (sq km)</b>	<b>Core Area (sq km)</b>	<b>Total Capability</b>	<b>Core Capability</b>
<i>Coquihalla</i>	2	378	180	19.3	9.2
<i>Coquihalla</i>	3	179	142	4.7	3.7
<i>Coquihalla</i>	4	34	34	0.2	0.2
<i>Coquihalla</i>	5	88	87	0.1	0.1
<i>Coquihalla</i>	6	1	1	0.0	0.0
		<b>681</b>	<b>444</b>	<b>24.2</b>	<b>13.2</b>
<i>Fraser Valley South</i>	2	80	32	4.1	1.6
<i>Fraser Valley South</i>	3	22	18	0.6	0.5
<i>Fraser Valley South</i>	5	2	2	0.0	0.0
<i>Fraser Valley South</i>	6	3	0	0.0	0.0
		<b>107</b>	<b>51</b>	<b>4.7</b>	<b>2.1</b>
<i>Lower Nicola River</i>	2	34	29	1.8	1.5
<i>Lower Nicola River</i>	3	59	35	1.5	0.9
<i>Lower Nicola River</i>	4	1	1	0.0	0.0
<i>Lower Nicola River</i>	5	9	9	0.0	0.0
		<b>104</b>	<b>73</b>	<b>3.3</b>	<b>2.4</b>
<i>Manning East</i>	2	287	259	14.6	13.2
<i>Manning East</i>	3	56	53	1.5	1.4
<i>Manning East</i>	4	62	60	0.4	0.4
<i>Manning East</i>	5	27	11	0.0	0.0
<i>Manning East</i>	6	1	1	0.0	0.0
		<b>432</b>	<b>384</b>	<b>16.5</b>	<b>14.9</b>
<i>Manning West</i>	2	420	330	21.4	16.8
<i>Manning West</i>	3	193	168	5.0	4.4
<i>Manning West</i>	4	133	110	0.8	0.7
<i>Manning West</i>	5	143	139	0.1	0.1
<i>Manning West</i>	6	3	2	0.0	0.0
		<b>892</b>	<b>750</b>	<b>27.4</b>	<b>22.0</b>
<i>Otter</i>	2	43	15	2.2	0.8
<i>Otter</i>	3	93	29	2.4	0.7
<i>Otter</i>	4	3	1	0.0	0.0
		<b>139</b>	<b>45</b>	<b>4.6</b>	<b>1.5</b>



**Table 7 (cont.)**

<b>Sub-unit</b>	<b>Capability Class</b>	<b>Total Area (sq km)</b>	<b>Core Area (sq km)</b>	<b>Total Capability</b>	<b>Core Capability</b>
Silverhope	2	307	163	15.7	8.3
Silverhope	3	164	147	4.2	3.8
Silverhope	5	90	89	0.1	0.1
Silverhope	6	7	3	0.0	0.0
		<b>567</b>	<b>403</b>	<b>20.0</b>	<b>12.2</b>
<b>Similkameen</b>					
<i>Similkameen</i>	2	258	192	13.2	9.8
<i>Similkameen</i>	3	344	148	8.9	3.8
<i>Similkameen</i>	4	24	21	0.1	0.1
<i>Similkameen</i>	5	277	41	0.3	0.0
<i>Similkameen</i>	6	1	0	0.0	0.0
		<b>904</b>	<b>402</b>	<b>22.5</b>	<b>13.7</b>
<b>Siska</b>					
<i>Siska</i>	2	114	68	5.8	3.5
<i>Siska</i>	3	18	15	0.5	0.4
<i>Siska</i>	4	19	16	0.1	0.1
<i>Siska</i>	5	204	109	0.2	0.1
<i>Siska</i>	6	2	0	0.0	0.0
		<b>358</b>	<b>208</b>	<b>6.6</b>	<b>4.1</b>
<b>Smith-Willis</b>					
Smith-Willis	3	469	217	12.2	5.6
Smith-Willis	4	0	0	0.0	0.0
Smith-Willis	5	226	75	0.2	0.1
Smith-Willis	6	1	1	0.0	0.0
		<b>696</b>	<b>293</b>	<b>12.4</b>	<b>5.7</b>
<b>Spius</b>					
<i>Spius</i>	2	313	196	16.0	10.0
<i>Spius</i>	3	177	71	4.6	1.8
<i>Spius</i>	4	21	21	0.1	0.1
<i>Spius</i>	5	179	73	0.2	0.1
<i>Spius</i>	6	2	1	0.0	0.0
		<b>692</b>	<b>360</b>	<b>20.9</b>	<b>12.0</b>
<b>Tulameen</b>					
<i>Tulameen</i>	2	682	367	34.8	18.7
<i>Tulameen</i>	3	159	79	4.1	2.0
<i>Tulameen</i>	4	119	98	0.7	0.6
<i>Tulameen</i>	5	103	31	0.1	0.0
		<b>1 063</b>	<b>574</b>	<b>39.7</b>	<b>21.3</b>

**Table 7 (cont.)**

<b>Sub-unit</b>	<b>Capability Class</b>	<b>Total Area (sq km)</b>	<b>Core Area (sq km)</b>	<b>Total Capability</b>	<b>Core Capability</b>
Yale	2	164	86	8.3	4.4
Yale	3	36	31	0.9	0.8
Yale	5	11	11	0.0	0.0
Yale	6	3	0	0.0	0.0
		<b>214</b>	<b>128</b>	<b>9.3</b>	<b>5.2</b>
<b>GBPU Total</b>					
		<b>9 807</b>	<b>5 173</b>	<b>293</b>	<b>160</b>
<b>“Spine” Total</b>					
<i>(Sub-units in italics)</i>		<b>6 249</b>	<b>3 715</b>	<b>199</b>	<b>119</b>

**Table 8. Habitat Capability Classes and Densities.**

<b>Habitat Capability Class</b>	<b>Estimated Minimum Grizzly Bear Density (grizzly bears/1 000 km<sup>2</sup>)</b>
1 (Very High)	76
2 (High)	51
3 (Medium)	26
4 (Low)	6
5 (Very Low)	1
6 (Nil)	0

## 8.6 Appendix 6. Work Plan for 2004/2005

This appendix outlines the work plan for the first year of Recovery Plan implementation. Work plans for subsequent years will be developed by the Recovery Team in consultation with the Liaison Committee. Activities are prioritized as: 1 (high), 2 (moderate) or 3 (low).

**Table 9. Work Plan for 2004/2005.**

<b>Activity</b>	<b>Priority</b>
Establish the North Cascades Grizzly Bear Liaison Committee	1
Draft a plan for the augmentation trial and begin consultation with the Liaison Committee	1
Complete an access management plan for the Tulameen Sub-unit	1
Implement access management strategies that apply in the absence of completed access management plans	1
Take preventative steps to reduce the likelihood of grizzly bear/human conflicts with a priority on the augmentation area and areas of recent, reliable sightings	1
Develop and implement a public information and education program to minimize grizzly bear/human conflicts, minimize grizzly bear mortality, encourage stewardship of grizzly bear habitat and encourage reporting of sightings	1
Undertake monitoring of population size and distribution, habitat conditions, grizzly bear mortalities and grizzly bear/human conflicts	1
Prepare and release first annual progress report on Recovery Plan implementation	1
Prepare grizzly bear-human conflicts response plan	1
Identify and propose WHAs for grizzly bears	2
Subject to the ability to capture residents animals, begin research on grizzly bear habitat use and movements in the North Cascades	2
Identify and assess the viability of potential linkages	2
Develop a strategy for obtaining funding for Recovery Plan implementation	2
Prepare research plan	3
Map, or obtaining mapping of, motorized trails	3
Produce and circulate first annual newsletter	3

## **8.7 Appendix 7. Potential Funding Sources for Implementation of the Recovery Plan**

Implementation of this Recovery Plan will require support from a wide variety of sources. Any funding received for recovery actions must be directed to the implementation of the approved Recovery Plan. The following list is a summary of potential sources of funding and in-kind support for the activities described under the plan.

### Provincial Government

- Ministry of Water, Land and Air Protection
- Ministry of Forests
- Ministry of Energy and Mines
- Ministry of Sustainable Resource Management

### Federal Government

- Canadian Wildlife Service

North Cascades Grizzly Bear Ecosystem Subcommittee (U.S.)

Skagit Environmental Endowment Commission

Habitat Conservation Trust Fund

Grizzly Bear Trust Fund (including fundraising specifically directed towards this Recovery Plan)

Forest Investment Account

Non-Governmental Organizations