

Known User Issues

Introduction.....	2
Data Issues	3
Timeliness.....	3
Completeness.....	3
Information on known data problems.....	3
Information in the ILRR.....	3
Interests prior to ILRR becoming a legal registry in 2007.....	4
ILRR data quality mirrors source systems' information.....	4
Information not available in electronic form.....	4
Interests that expired prior to May 2005.....	4
Interest holder Information.....	4
Private Land spatial and attribute Information.....	5
Map Viewer Functionality Issues.....	6
Large Interest.....	6
Survey Fabric.....	6
Importing Shape Files.....	6
First Nations Information.....	7
Petroleum Natural Gas Grid.....	7
Orthophotos not appearing.....	7
ILRR Systems Functionality Issues.....	8
Legal description or survey parcel search Failing.....	8
Custom Queries Failing.....	8
Status Reports – reporting on administrative boundaries?.....	13
Exporting digital spatial Information from ILRR.....	13
Using Windows NT.....	14

Introduction

The ILRR web site has information on known data problems including:

- [Data Assessment reports](#)
- [A Practical Guide to Effective Coordination of Resource Tenures](#)

The ILRR online help also provides information on problems and the most effective way to use the ILRR.

In the Known Data Issues section, issues have been grouped into three categories:

1. Data Issues.

The ILRR web site has information on known data problems including:

- [Data Assessment reports](#)
- [A Practical Guide to Effective Coordination of Resource Tenures](#)

2. Map viewer functionality

The map viewer uses ESRI technology's "Internet Mapping Framework (IMF)" to display spatial information about rights and interests on the land, administrative boundaries, base map and survey information. In customizing the viewer, the ILRR focused on rights and interests information and status, ease of use, and fast response time.

Some users have expressed an interest in having more information available through the viewer such as resource, habitat and planning information or in being able to have more discretion to customize the viewer. Changes that do not affect the ILRR map viewer focus will be implemented as time, resources or software technology improvements.

3. ILRR systems functionality

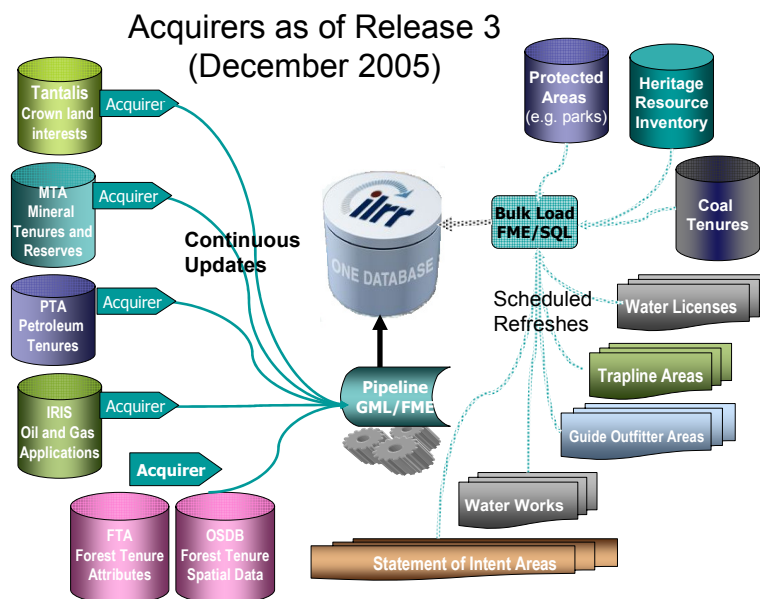
ILRR application supports a wide range of functionality including: the ability to quickly look up and query attribute information about interests and survey parcels and to view them on a map; to create custom status reports; and to create, save and share custom queries and to request notification of changes relative to their query parameters.

The ILRR will not be fully deployed until the Spring of 2007. The ILRR will continue to deliver new functionality and improve existing functionality. Some functionality is only available in specific areas of the province (e.g. search by legal description or survey parcel) as the data to support the functionality has not been completed.

Data Issues

Timeliness

The ILRR allows users to access comprehensive current land and resource information in minutes, instead of days or weeks. A real time acquirer takes Crown land, forest, oil/gas, mineral interests and requests, and registers them in the ILRR (target within 30 minutes) allowing you to immediately view and status those interest. Interests that change less frequently (e.g. guide outfitters areas are bulk loaded on a scheduled bases). The [Discover Services](#) provides information on the information in the ILRR including information on each type of record in the ILRR: description, custodian, date of data, update cycle, purpose (intended use), and presentation form. Additional real time acquirers are being built to capture Crown land data that is currently bulk loaded. Private land information will be added as it becomes available from the Integrated Cadastral Information Society or municipalities.



Completeness

Information on known data problems

The ILRR web site has documentation data quality issues including the [Data Assessment reports](#) and [A Practical Guide to Effective Coordination of Resource Tenures](#)

Information in the ILRR

- As of Release 2 (Dec 2005), 250 different rights and interests were available in the ILRR. In the original business requirements completed in May 2004, approximately 100 different interests were identified for inclusion in the ILRR.
- The ILRR data is obtained directly from operational data sets. There are almost 700,000 interests register in the ILRR. The ILRR focuses on a common schema for all Crown lands information: 1) Interest type, 2) Interest holder, 3) term, 4) geometry, 5) operational system unique identifiers, 6) legal descriptions. In some cases, some of the schema information is not available in electronic form from the original operational systems and therefore the information can not be obtained and registered in the ILRR.

- As additional rights and interests data becomes available, it will be added to the ILRR. For example, the Ministry of Forest and Range silviculture will become available in 2006.

Interests prior to ILRR becoming a legal registry in 2007

- Most Interests which existed (were active) in electronic form in an operational or warehouse system when the ILRR went live in May 2005 are likely in the ILRR
- Interests which had expired (inactive) when the ILRR went live are likely not in the ILRR.
- For interest issued after 2007 the ILRR will retain a history of expired interests.

ILRR data quality mirrors source systems' information

- The ILRR data is obtained directly from operational data sets. The information in the ILRR reflects that quality of information contained in those operational data sets. The ILRR and resources granting Ministries are jointly working on data quality improvement projects; however data quality continues to be a concern.
- If the data was incorrect or missing in the operation system it will also be wrong or missing in the ILRR.
- Different government agencies collected, created and maintained spatial and attribute data according to a variety of formats, projections, buffers, and standards, etc. When the ILRR brought together the information in one location, these differences become visible in the map viewer. It is important that the map information is representational, and that the real location is determined by the physical location on the ground (such as the legal survey location).

Information not available in electronic form

In some cases, information is not available in electronic form from the original operational systems and therefore the information can not be obtained and registered in the ILRR.

Historical information which has never been captured electronically is not available in the ILRR.

Interests that expired prior to May 2005

The ILRR registers interests that were active in May 2005 or were created after that date; historical information on interests that had expired prior to that date are not available in the ILRR.

Historical information which has never been made available electronically would also not be available in the ILRR.

The ILRR web site has information on known data problems including the [Data Assessment reports](#) and [A Practical Guide to Effective Coordination of Resource Tenures](#)

Interest holder Information

The ILRR schema supports capture of both interest holder and contact information for the interest holder.

- In some cases the interest holder and contact information was not available in electronic form from the rights granting agencies operational system and therefore it is not found in the ILRR.
- For interest types where the interest holder and contact information is capture, ILRR external users will be able to see the names of company, but not the names of individuals due to *Freedom on Information and Protection of Privacy Act* provisions.

-

Private Land spatial and attribute Information

The ILRR is committed to providing private land information where it is available. However, there is currently no seamless private land survey fabric for the province and no method of plan exists to create a single reconciled fabric in the immediate future.

There are currently 3 different sources for private land survey fabric information.

Integrated Cadastral Information Society (ICIS) which brings together information from utilities and municipalities. Only 135 of 185 municipalities have joined ICIS, so the information is incomplete and static “as is” data. ICIS is developing plan for quarterly updates.

Integrated Land Management Bureau’s (ILMB) Base Mapping is building the Integrated Cadastral Fabric (ICF) product that reconciles Crown and private land survey fabric. The ICF is dependent on data being available from ICIS. The remainder of the province is not completed and it is static “as is” data.

Municipalities who are not members of ICIS, and therefore the province does not have access to their private land information.

In much of the province users will see the private cadastre in the map viewer. The ILRR partnered with ILMB’s Base Mapping to reconcile the Crown survey fabric and the private survey fabric in the Northeast and a maintenance strategy is planned. By building a process that links the private and Crown survey fabric, in the Northeast the ILRR is able to report on where land is privately owned or owned by the Crown, and users can search by legal description, Crown parcel identifiers (PIN), private parcel identifiers (PID), and in some cases BC Assessment’s JUROLS. Further work is planned for other parts of the province. The Custom Status query allows you to select your parcel type (primary, Crown Subdivision, Land Title subdivision or right-of-way) and provides you with search results showing the parcel information, legal description and ownership.

Map Viewer Functionality Issues

If your query results fail to appear, your computer may be set to block pop-ups so enable them from the ILRR.

Large Interest

- To view large interests and large reserves in the ILRR set your map scale to 1:300,000 hectares.
- The AOI must be less than or equal to 100,000 hectares. (The Map Viewer reports your AOI in square kilometres 100 hectares = 1 sq. km.). This is a software limitation.

Survey Fabric

The Survey Fabric consists of both Crown survey parcels and private survey parcels. To more clearly see the cadastral fabric, turn off the rights and interest layers in the map viewer.

The ILRR is committed to providing private land information where it is available. However, there is currently no seamless private land survey fabric for the province and no method of plan exists to create a single reconciled fabric in the immediate future.

There are currently 3 different sources for private land survey fabric information.

- Integrated Cadastral Information Society (ICIS) which brings together information from utilities and municipalities. Only 135 of 185 municipalities have joined ICIS, so the information incomplete and static "as is" data. ICIS is developing plan for quarterly updates.
- Integrated Land Management Bureau's (ILMB) Base Mapping is building the Integrated Cadastral Fabric (ICF) product that reconciles Crown and private land survey fabric. The ICF is dependent on data being available from ICIS. The remainder of the province is not completed and it is static "as is" data.
- Municipalities who are not members of ICIS, and therefore the province does not have access to their private land information.

In much of the province users will see the private cadastre in the map viewer. The ILRR partnered with ILMB's Base Mapping to reconcile the Crown survey fabric and the private survey fabric in the Northeast and a maintenance strategy is planned. By building a process that links the private and Crown survey fabric, in the Northeast the ILRR is able to report on where land is privately owned or owned by the Crown, and users can search by legal description, Crown parcel identifiers (PIN), private parcel identifiers (PID), and in some cases BC Assessment's JUROLS. Further work is planned for other parts of the province. The Custom Status query allows you to select your parcel type (primary, Crown Subdivision, Land Title subdivision or right-of-way) and provides you with search results showing the parcel information, legal description and ownership.

Importing Shape Files

- **Format.** Shape files must be imported in Albers projection. Problems may be experienced with very complex polygons.
- **Queries based on your imported shape file.** You can use an imported shape file to create and "area of interest" in the ILRR and generate a report. If your shape file is comprised by more than one polygon, it is important to select each part of your polygon for your query. Very complex shapes sometimes result in errors, and this problem is being exemplified.

First Nations Information

The ILRR contains information on Indian Reserves, Land Claim Settlement Areas and Statement of Intent Areas. Improvements planned in the July 2006 Release 4 will group this information together in a single grouping to make it easier to report on First Nations Information. Until that time the following should help you locate the information you need.

1. **Indian Reserves** (viewable in Map Viewer in the “Administrative Boundaries Layer”, but the user must turn on the layer for it to be visible (default is turned off). The ILRR attribute status reports do not report on them until Release 4 (planned for July 2006)
2. **Land Claim Settlement areas**, (viewable in Map Viewer in the “Administrative Boundaries Layer”, but the user must turn on the layer for it to be visible (default is turned off). The ILRR attribute status reports do not report on them until Release 4 (planned for July 2006)
3. **Statement of Intent areas**: User can query by Statement of Intent area in the ILRR, or view the areas in the Map Viewer (the layer’s default color is white, so to view it change the color of the layer to the color of your choice). In release 4 this layer will be defaulted off, however when you turn it on in will be a medium blue color.

(The lines on this map represent the approximate boundaries of traditional territories described in First Nation Statements of Intent to negotiate treaties which have been submitted to, and accepted by, the B.C. Treaty Commission. They are illustrative only. Publication of this map does not imply that the First Nations, the Province of British Columbia, or the Government of Canada have agreed to the boundaries shown)

Petroleum Natural Gas Grid

- To view the Petroleum Natural Grid (PNG) or Peace River Block grids on the map, select the map layer legend, open the Base Topography group, and turn on the PNG grids by clicking in the box. To status by PNG grid in the ILRR, select Custom Status, select Location, then select Grid and enter the grid type.
- If you need to run the same query again, make sure you save your query using the “save query” function.

Orthophotos not appearing

The orthophoto layer is currently available. They are expected to be included in a future release once we can ensure that they do not affect system response time and stability.

ILRR Systems Functionality Issues

Legal description or survey parcel search Failing

- This functionality is available in areas where the ILRR has finished building tables to link private and Crown land survey parcels (currently Northeast part of BC). In other parts of the Province no results will be displayed. INSERT PICTURE OF MAP
- If you need to run a query again later, create a “Custom Query” and save it to your queries and notifications. You will be able to run the query, change it, share it with others, and create a notification based on your query so that the ILRR will send you an email when something changes in your area of interest.

Custom Queries Failing

There are general two types of errors which can cause your custom query to fail:

1. you made an error in the individual parameter screens, or
2. the combination of parameters you selected does not conform to certain Query Validation criteria

The Online help for the Custom Query explains the problems which can cause your query to fail.

Errors in the individual Parameter screens:

In order for your query to be successful, the individual parameters you select must conform to certain Parameter Validation criteria.

The ILRR validations help to control the size or runtime for queries. The following is a list of all validation criteria for each of the Custom Status parameters.

Term or date: validation criteria

- The default for this parameter is NO Terms or Other Dates are selected.
- You can select one or more date types using the checkboxes.
- When you activate a date type by clicking a checkbox, you must enter a corresponding date. You can type in the date using the format yyyy/mm/dd, or choose a date using the calendar function.

Interest Status: validation criteria

- The default for this parameter is ALL interest statuses are selected.
- At least ONE interest status must be selected.

Interest Type: validation criteria

- The default for this parameter is ALL interest types are selected.
- At least ONE interest type must be selected.

Interest Agencies: validation criteria

- The default for this parameter is ALL interest agencies are selected.
- At least ONE interest agency must be selected.

Interest Holders: validation criteria

- The default for this parameter is NO Interest Holders are selected.
- If you activate a radio button (either the Organization or Individual/Partner), and perform a search, you must select one or more checkboxes from the search results list. Otherwise, click the **Cancel** button.

Location: validation criteria

- The default for this parameter is the ILRR Approved Area, which is the Northeast of the province.
- At least ONE location type must be selected.

- For PID and PIN, ILRR first determines whether the PID or PIN is an integer, then performs ONE search: Does the PID or PIN have spatial data associated with it? If it does not, you will receive an error. If you have entered an invalid number for PID or PIN, you will receive the same error message.

Interest Size: validation criteria

- The default for this parameter is NO size is defined.
- If you activate a radio button, you must enter a size value greater than zero.

Query Validation criteria

The ILRR validations help to control the size or runtime for queries. When you have finished selecting the parameters for your query, and click the Submit button, the system looks at the combination of parameters that you have selected, and performs a validation. The parameter Location Type drives this validation.

Online help contains a table that describes the validation rules that ILRR will apply when you click the **Submit** button on the **Custom Query Parameter** screen. The site also has examples of valid and invalid combinations.

Query Validation Criteria Table

USER SELECTS		VALIDATION RULES	
Location Type:	Area of Interest in Hectares:	User Must Select Parameter:	Parameter Limits:
PIN, PID or Map Viewer	Between 1 & 5 million	Interest Holder	At least one
PIN, PID or Map Viewer	Between 100,000 & 1 million	Interest Holder	At least one
		OR	
	Between 100,000 & 1 million	At least ONE of the following parameters:	
		Interest Type	5 Types or less
		Interest Agency	5 Agencies or less
		<i>Term/Other Dates</i>	A span of 10 years or less
		Interest Size	No limits
PIN, PID or Map Viewer	Less than 100,000	No rules	No limits
ILRR Approved Area or BC Province	N/A	Interest Holder	
		OR	
	N/A	At least TWO of the following parameters:	
		Interest Type	5 Types or less
		Interest Agency	5 Agencies or less
		<i>Term/Other Dates</i>	A span of 10 years or less

		Interest Size	No limits
--	--	---------------	-----------

Parameter Combinations: Valid and Invalid

If YOU SELECT				
Location Type:	Area of Interest in Hectares:	Parameter(s):	Pass or Fail	Reason for pass or fail
PIN, PID or Map Viewer	Between 1 & 5 million	3 Interest Holders no other parameters	Pass	selecting at least 1 Interest Holder will pass validation
PIN, PID or Map Viewer	Between 1 & 5 million	2 Interest Holders all Interest Agencies no other parameters	Pass	selecting at least 1 Interest Holder will pass validation
PIN, PID or Map Viewer	Between 1 & 5 million	3 Interest Agencies 5 Interest Types no other parameters	Fail	query did not have at least 1 Interest Holder
PIN, PID or Map Viewer	Between 100,000 & 1 million	20 Interest Holders 8 Interest Types Term/Other Dates: range > 10 years no other parameters	Pass	selecting at least 1 Interest Holder will pass validation
PIN, PID or Map Viewer	Between 100,000 & 1 million	13 Interest Types Term/Other Dates: range < 10 years	Pass	selecting at least 1 of the parameter limits, (Term/Other Dates: range < 10 years), will pass validation
PIN, PID or Map Viewer	Between 100,000 & 1 million	no parameters selected (you have accepted all the defaults)	Fail	query did not have at least 1 Interest Holder, or at least 1 of the remaining parameters (excluding Status)
PIN, PID or Map Viewer	Between 100,000 & 1 million	5 Interest Agencies 11 Interest Types Term/Other Dates: range > 10	Pass	selecting at least 1 of the parameter limits (5 Interest Agencies) will pass validation

		Status = active		
PIN, PID or Map Viewer	Less than 100,000	7 Interest Agencies 22 Interest Types Term/Other Dates: range > 10 years	Pass	no limits
ILRR Approved Area or BC Province	N/A	6 Interest Holders no other parameters selected	Pass	selecting at least 1 Interest Holder will pass validation
ILRR Approved Area or BC Province	N/A	9 Interest Holders 6 Interest Types Term/Other Dates: range > 10 Status = suspended	Pass	selecting at least 1 Interest Holder will pass validation
ILRR Approved Area or BC Province	N/A	4 Interest Agencies 9 Interest Types Term/Other Dates: range > 10 years	Fail	query did not have at least 1 Interest Holder, or at least 2 of the remaining parameters (excluding Status)
ILRR Approved Area or BC Province	N/A	3 Interest Types Term/Other Dates: range > 10 Status = suspended 1 Interest Agency	Pass	selecting at least 2 parameters (excluding Interest Holder) will pass validation

Status Reports – reporting on administrative boundaries?

- In the first 3 releases of the ILRR the status reports only provided information on rights and interest which are registered in the ILRR.
- In release 4 (July 2006), the ILRR will be enhanced to allow users to specify in their “Generate Report: Display Options”. that some or all administrative boundaries be included in the report results

Exporting digital spatial Information from ILRR

External Users:

The ILRR does not support access by non-government users to digital spatial information contained in the ILRR. The reason is that there are fees charged for digital spatial data by agencies who create the information and provide it to the ILRR, therefore the ILRR can not provide free access to that information.

Users external to government who want to access digital base map, survey fabric or other data for analysis purposes would have to obtain the information directly from the operational agency or by using one of the following sources:

- Base Mapping and Geomatic Services Base Map Online Store
<http://ilmbwww.gov.bc.ca/bmgs/ecommerce-intro.html>
- Land and Resource Data Warehouse (LRDW)
<http://lrdw.ca/>
- Tantalus GATOR, a system used to research a [variety of attributes](#) associated with a particular parcel of Crown land, and to retrieve [scanned images](#) of Crown land records. Search options in Tantalus GATOR include search by Survey Parcel, Interest Parcel or Wellsite Data. To streamline access to Land Act and survey parcel information, the ILRR map viewer provides a link directly to Tantalus GATOR (the link requires external users to log in and a fee is charged for information obtained from the Tantalus GATOR system).
http://tantalus.crs.gov.bc.ca/home_page.htm

Internal Government Users

Internal government users can export digital spatial data for analysis. A problem with the Feature Manipulation Software (FME) software that supports GML export, means that you must download a file to support GML export. Information can be found in ILRR Help

On the “Generate Report: Display Options” screen, set your “Output format”

Select the file format this report will be produced in.
Select File Format: <input type="text" value="GML"/>

On the next screen select “Batch” as your output format

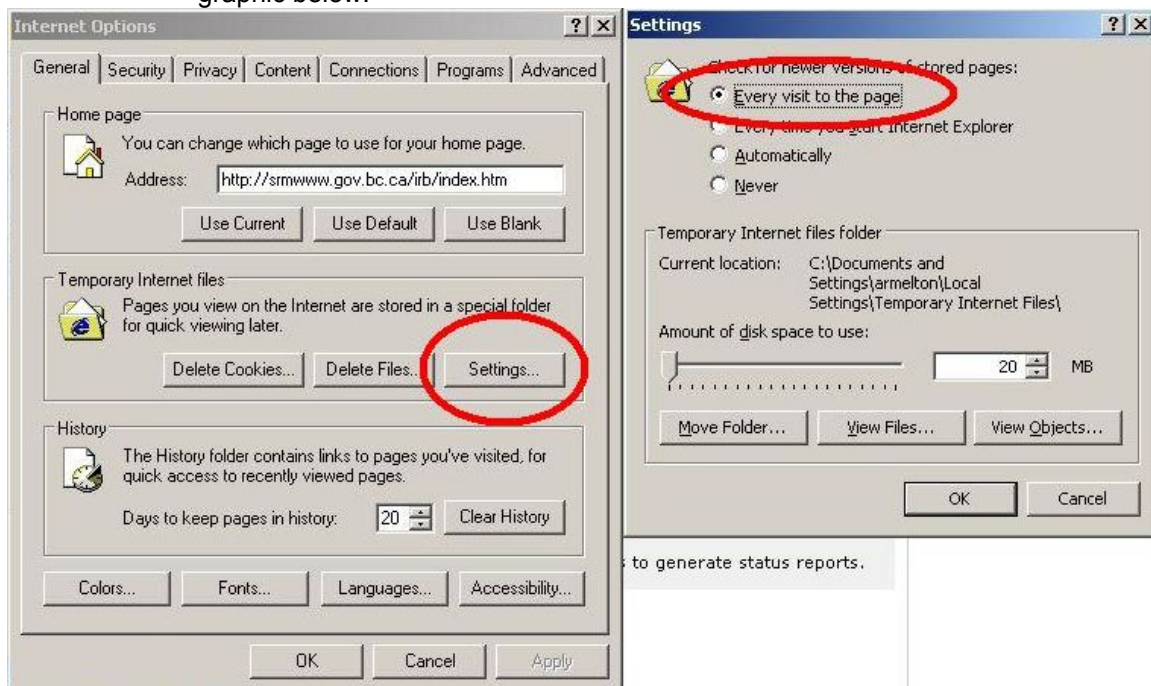
Output Format	Select one of the following:
	<input type="radio"/> Screen <input type="radio"/> File <input checked="" type="radio"/> Batch

Using Windows NT

Users who are using Internet Explorer with a Windows NT operating system may experience problems in running a Custom Status; particularly the inability to select distinct parameters (ie. specific interest type).

To resolve this issue, users must change the Internet Explorer settings.

1. Open Internet Explorer
2. From the menu bar “click” Tools > Internet Options
3. Under the “General” tab click on Settings in the Temporary Internet files area.
4. Ensure that the radio button for “Every visit to the page” is highlighted. (see graphic below).



5. Click “OK” > Click “OK” again to save the settings.
6. Exit Internet Explorer.
7. Open Internet Explorer and continue to the ILRR.