



Integrated Land Management Bureau

Integrated Land and Resource Registry (ILRR)



Saving and Sharing ILRR Information Reference Guide

The ILRR is:

A spatially enabled integrated register of over 250 different types of Crown land interests and tenures (e.g. *Land Act* tenures and rights of way, forest, mineral, oil and gas, water, etc.), regulated uses, land and resource restrictions and reservations (e.g. parks, mineral reserves) that can be viewed on a map. In addition to rights and interests, reference layers available in the ILRR include:

- Crown land survey parcels, and private land survey parcels (where available). Survey parcel information can be accessed using the "Survey Parcel Search" query, the Custom Query or the map viewer.
- Administrative boundaries including forest districts and regions are available in the map viewer.
- Base map information, including TRIM topography, grids (e.g. NTS, BCGS, PNG).

Saving and Sharing Report Parameters or Results

The ILRR allows users to quickly create, save and share both query parameters and query results. This can be done using both the ILRR map viewer and the "Custom Status" functions. Using these functions users can:

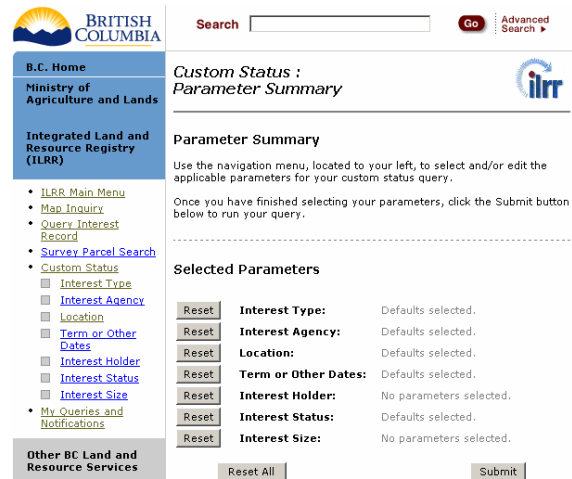
- Create and share customized query parameters (e.g. all *Land Act* and water interests issued since 2000 in Oliver to X interest holder) or map views (sessions) that support the business needs of a work unit or organization.
- Quickly generate or rerun a report to determine if something has changed that will affect business or decision making process. Using Custom Query, users can even request an email notification if something changes in the area specified in the query parameters.
- Quickly answer common telephone or in person questions.
- Send information to a government or external agency in support of an application or as part of a referral process.

"Custom Status" Report	Select and save report parameters	Save parameters to "My Queries and Notifications." Each time the report is run again, it will show the new updated results.
	Share report parameters	When saving your query, add the user name of the person you want to share with. When that person runs the query they will see the results permitted by their security level.
	Notification of changes	If you create a notification for your Custom Query, the ILRR will send an email when a new application or interest is recorded in the "area of interest" specified by your query to everyone you include in your notification list.
	Share report results	Output and save the report results in one of the supported formats PDF, CSV, RFT, or GML (government users only). Provide hard copy or electronic copy to the other person.
ILRR Map Viewer	Select and save map parameters	Specify the area. Use the default parameters or customize the viewable layers and symbology. Save a session to your PC or a network server. It will be saved as an .ssn which can be opened using the ILRR map viewer.
	Share map session parameters	Email the .ssn file to the other person or save it to a shared network. They must log onto the ILRR and open the Map Viewer, and then click on the "Open Session" and use the Browse button to locate the saved session.
	Share report results	Specify your map parameters (area, layers and symbology) and create a PDF map which you can print or email.

Custom Query – create, save, and share custom queries based on your needs

If you need to run a report again later, create a “**Custom Query**” and save it to your queries and notifications. You will be able to run the query, change it, share it with others, and create a notification based on your query so that the ILRR will send you an email when something changes in your area of interest. View the Custom Query web based training module, or when in the Custom Query screen access screen specific help by clicking on **Help ?**

- Select up to 7 parameters: interest type, interest agency, location, term or other date, interest holder, status, size.
- Select interest by location type, legal description, etc.
- Save your query to “**My Queries and Notifications**”. Run, modify, copy, or delete your query at any time.
- Share your query parameters with another IDIR or BCeID user.
- Create a notification based on your query and have the ILRR email you when there are changes in your area of interest.

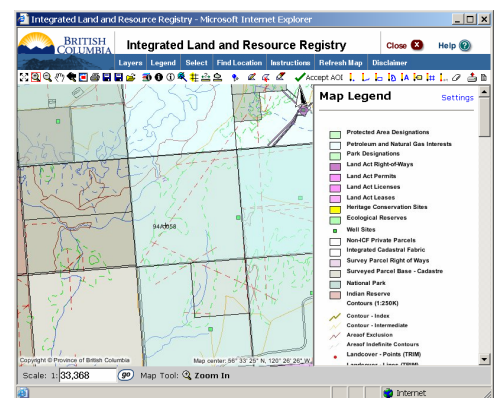


Map Inquiry – spatially query interests, produce maps, select an “area of interest” for a land status

The **ILRR map viewer** also allows users to create custom query parameters, save them for later use, or share them. You can save a session to either a “**server**” (a network) or to a “**client**” (your PC). To open a saved session just click on “open saved session.”

All the parameters you specified when you created the query will be saved when you save your session. If you want to share the query parameters with others, email your saved session to them (it will be sent as a .ssn file). They can then save the file on their network or PC. Once they have done that they can “open saved session” in the ILRR map viewer.

- **Create a view for a specific area.** For example, if you need to regularly look at information in the Kamloops area, you would zoom into the area of interest and save the session. When you open the session (using) in the ILRR map viewer, the Viewer opens the area you previously defined.
- **Customize the Layers.** The ILRR has default setting for layers that are turned on and off. You can select only the layers required to support your business (eg. Turn on only the *Land Act*, forest roads, and parks and protected area layers and the base maps and click the check box () beside the layer name to turn off the layer). Or turn off all the layers () and then turn on only the ones you want.
- **Customize the Symbology** to meet your business needs. Click the icon beside the layer to change the layer symbology, symbolize the layer by attribute, or to restore the default symbology(). In this example, oil and gas example, well sites were turned on and show in green, oil and gas tenures were changed to pale blue, parks are green, etc). The legend is automatically updated to reflect your new symbology. When you create a PDF Map (using) or you save your session (using) the new custom symbology is automatically included.



User hint: In the ILRR reports, you can select **Map Viewer** to see an interest on the map. The Map Viewer will open with the specified interest highlighted in yellow. When you create a map in this way, you can not then create a new area of interest using that map (an error message will result). If you need to create a new AOI using that map result as a base, save that map session to a server or client. You can then open the saved session in the Map Viewer (the interest will no longer be shown in yellow) and you can create new areas of interest based on the map.