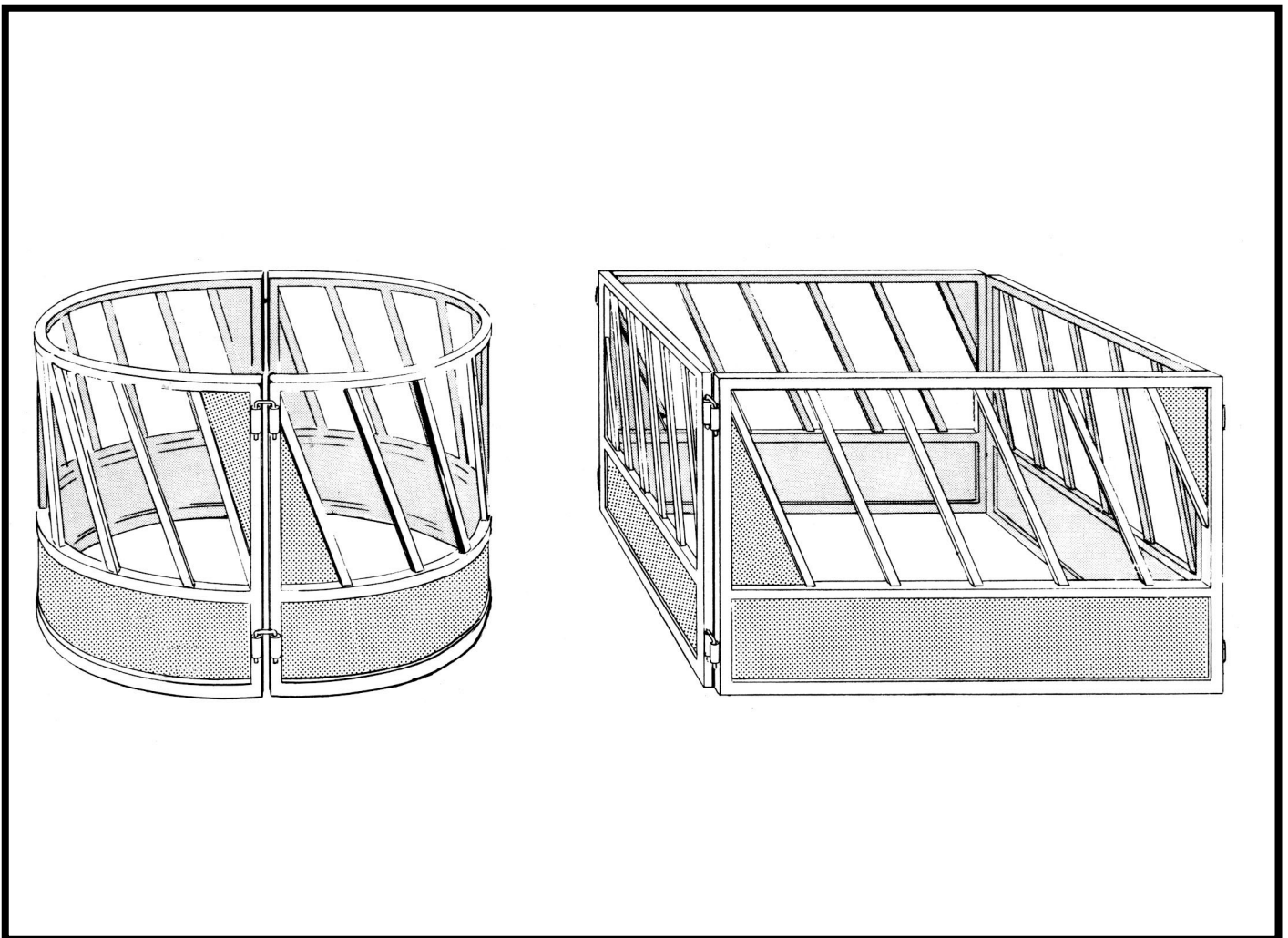


SLANT BAR FEEDER FOR ROUND BALES - STEEL



DEVELOPED BY CANADA PLAN SERVICE

314-02

GIANT BALE FEEDERS (STEEL)

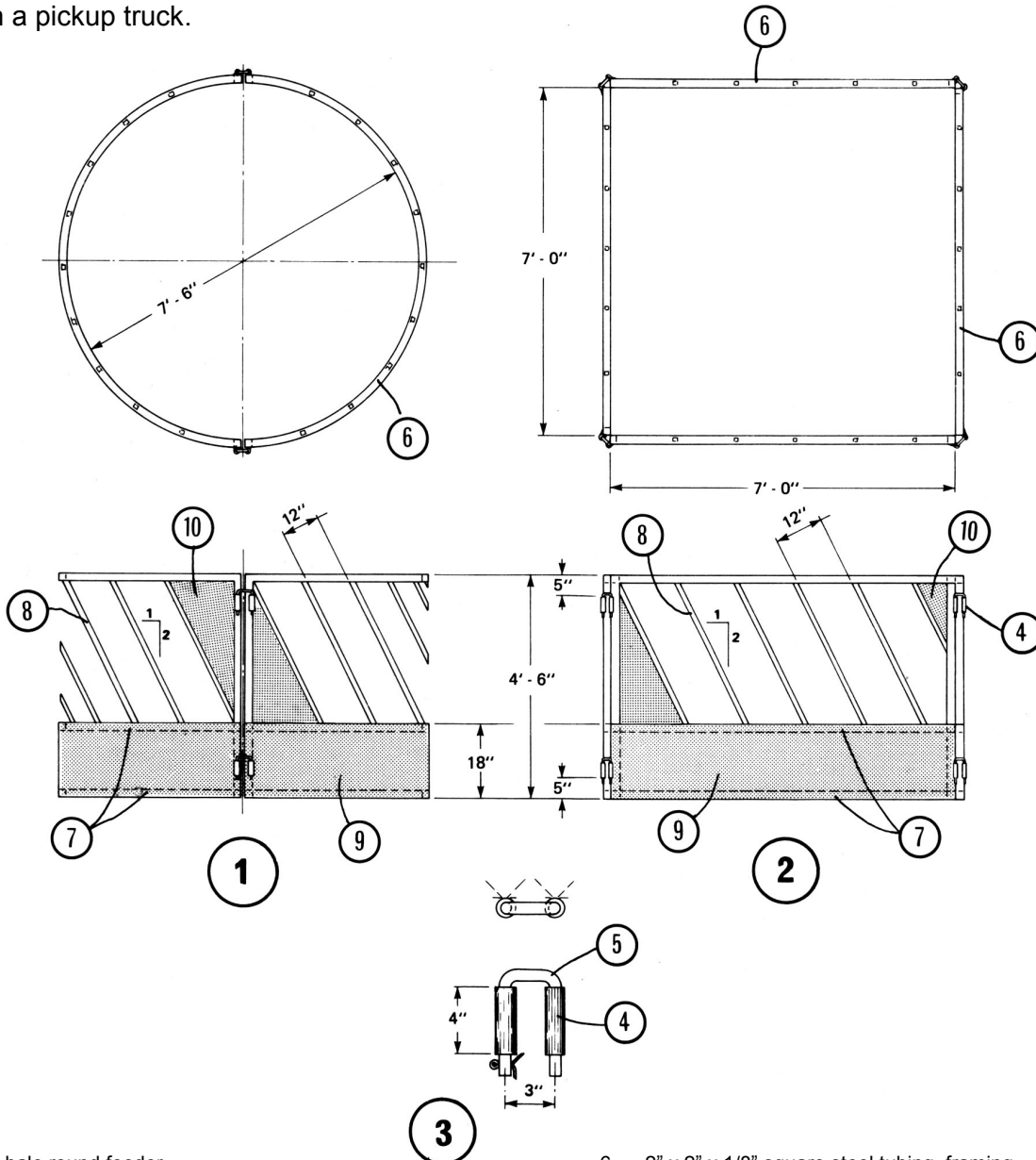
CPS
 PLAN 1642 NEW 85:03

These big bale feed racks are easy to load, easy to move, and they prevent excessive hay wastage. The round version requires a bender to reform the square tube rails, but the round shape makes it easier to up-end the unit and roll it from place to place.

The square version is easier to build in the farm shop, and it can be completely collapsed for transport in a pickup truck.

Important feed-saving features are the solid lower section and the slanted divider bars above. Spacing these bars 12 in. apart is a good compromise for all ages of cattle.

With slanted bars, cattle must lift and turn their heads a little sideways to withdraw. This makes it a little more difficult to pull hay out of the feeder, reducing waste. Triangular openings at the ends of each panel should be closed with sheet steel; otherwise cattle can occasionally get wedged in these tapered opening.



- | | |
|---|---|
| <ul style="list-style-type: none"> 1 giant bale round feeder 2 giant bale square feeder 3 locking pin assembly 4 3/4" pipe welded both sides to frame 5 3/4" steel rod, bend as shown and drill end for cotter pin | <ul style="list-style-type: none"> 6 2" x 2" x 1/8" square steel tubing, framing 7 1 1/2" x 1 1/2" x 1/8" square steel tubing, framing 8 1" x 1" x 1/8" square bars 9 16 ga sheet steel welded or bolted to frame 10 fill triangular corners to prevent cattle from being caught |
|---|---|