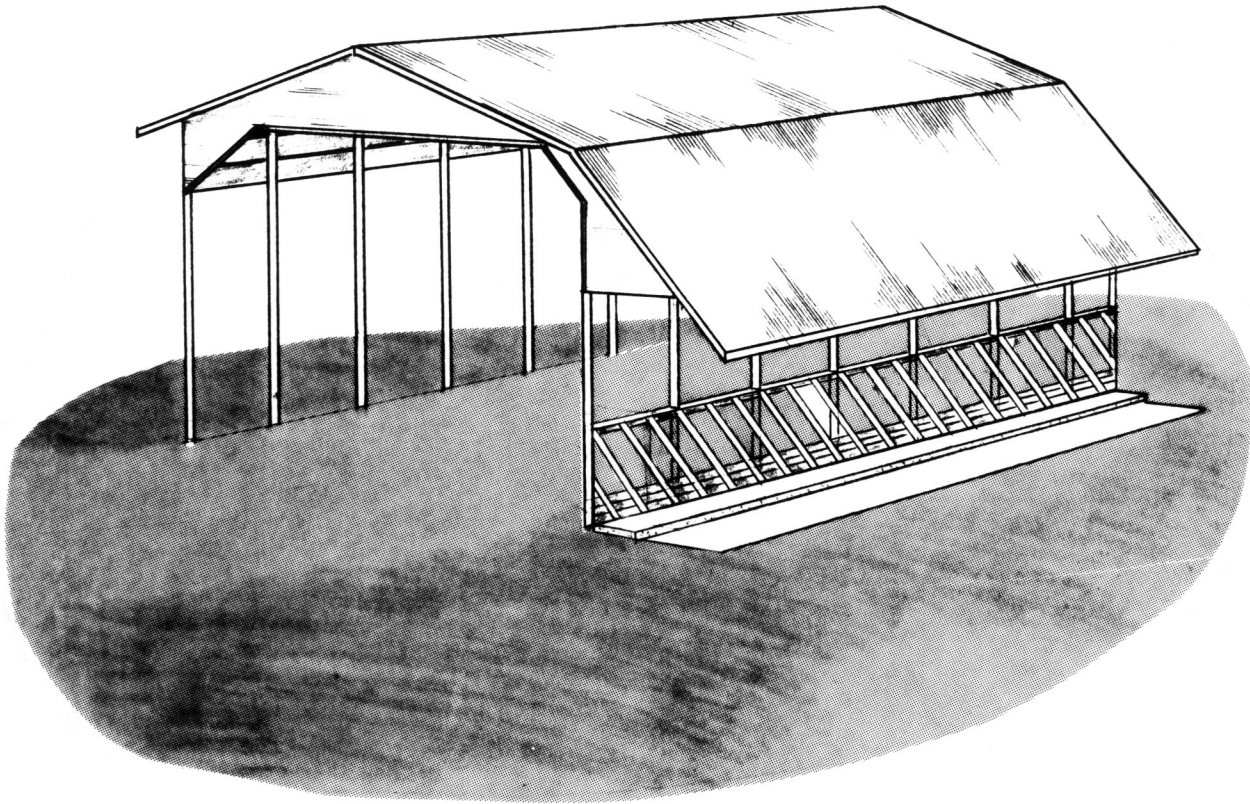
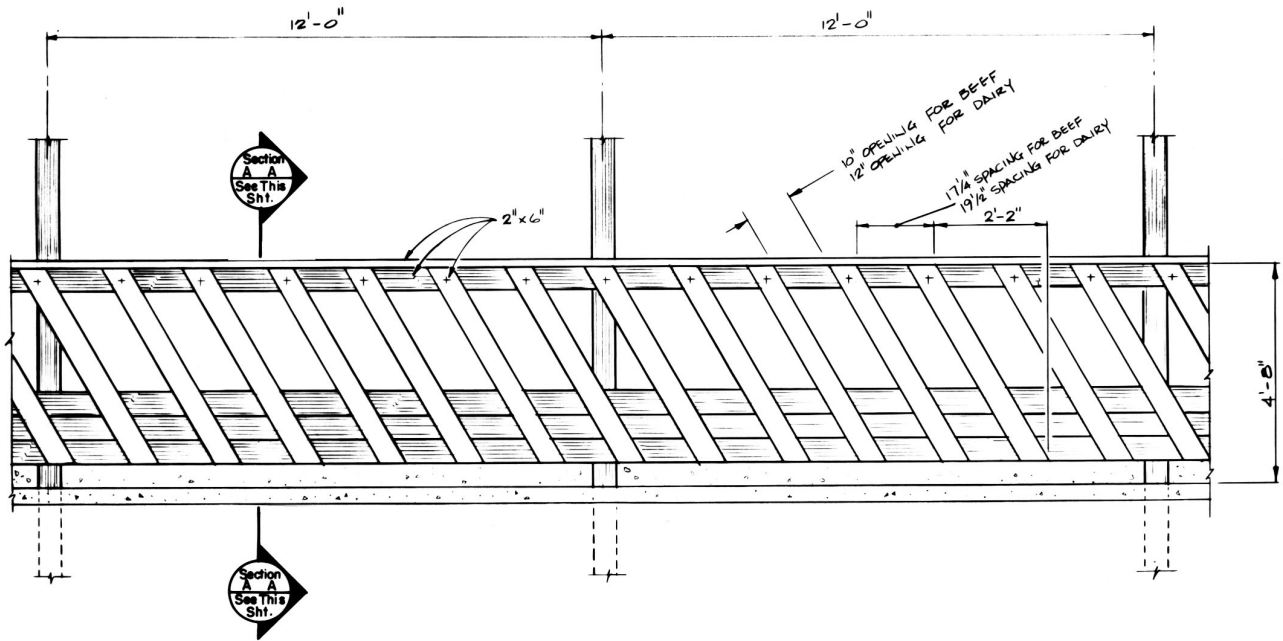


SLANT BAR HAY FEEDER ON HAY SHED

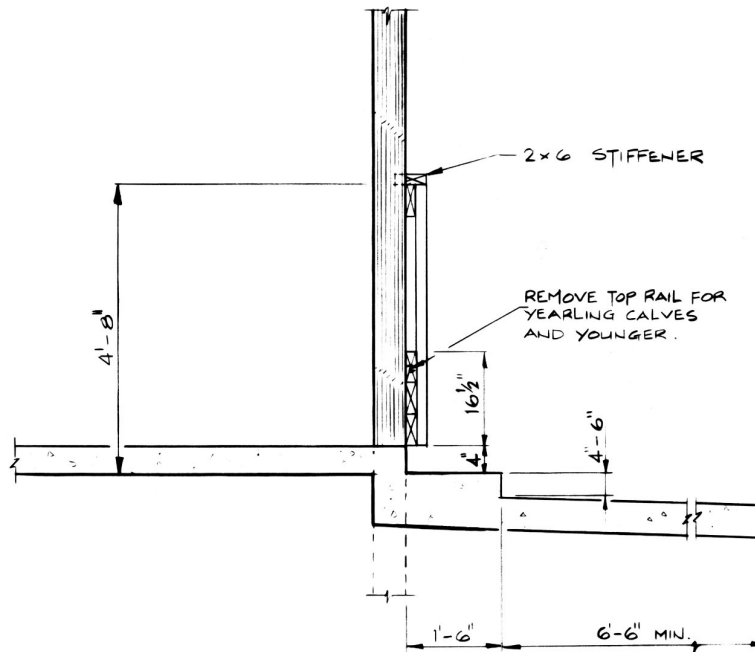


This hay feeder is adaptable for installation along the side of a pole type hay storage. The cattle may be self fed at the storage site. The sloped dividers are designed to control wasting of hay. Hay should be fed on the concrete slab behind the feeder so the cattle put their heads completely through the openings and feed in a natural head down position.

The feeder is constructed of 2-inch nominal lumber. The posts of the storage barn can form the support members for the feeder. A 4 to 6 inch concrete step should be made to further control wastage of hay. The concrete feeding alley should be sloped away from the feeder to prevent manure accumulation near the hay.



FRONT ELEVATION



Section A-A See This Sht. SECTION A-A Section A-A See This Sht.