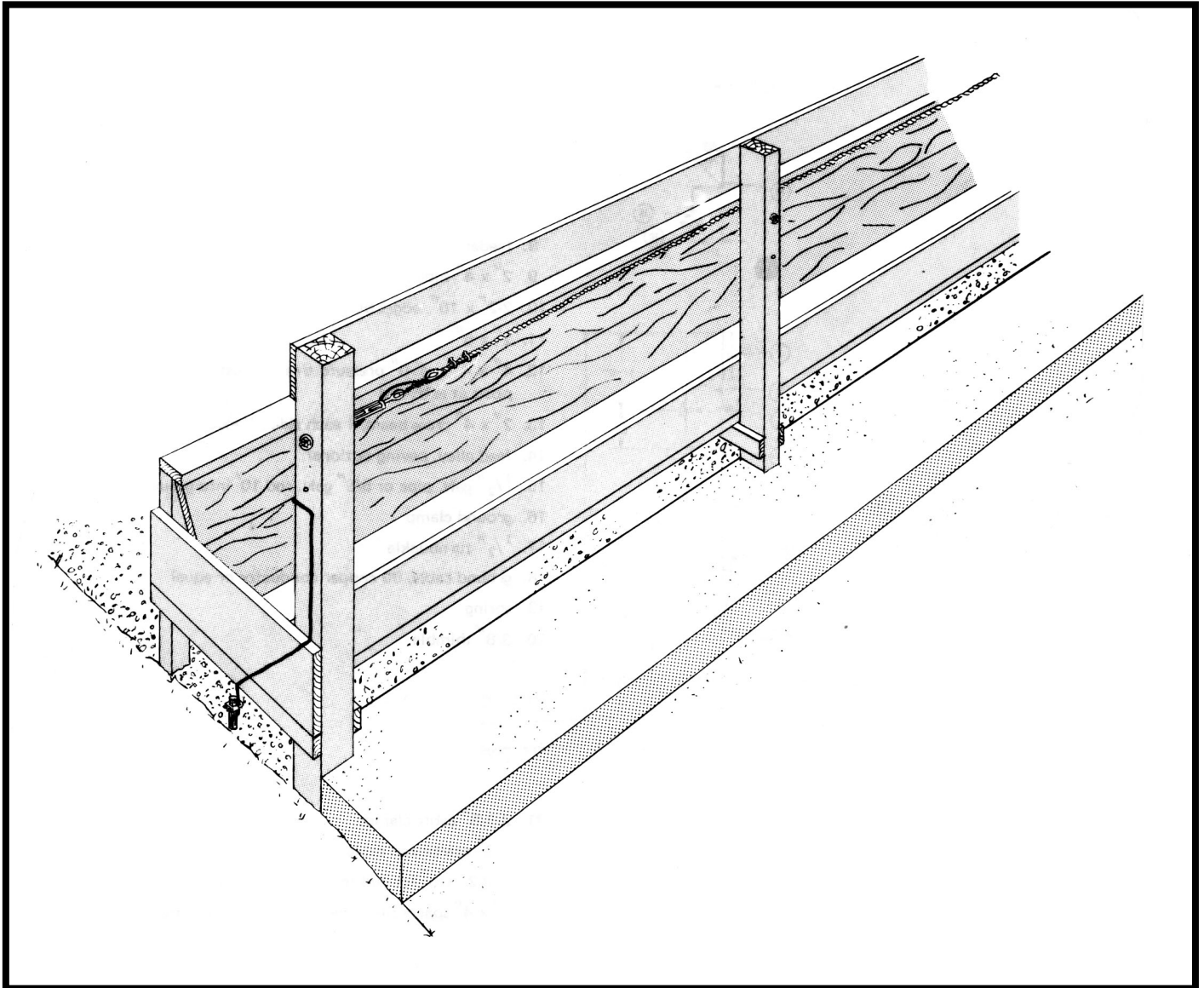


FENCELINE FEED BUNK - ALL WOOD



DEVELOPED BY CANADA PLAN SERVICE

314-21

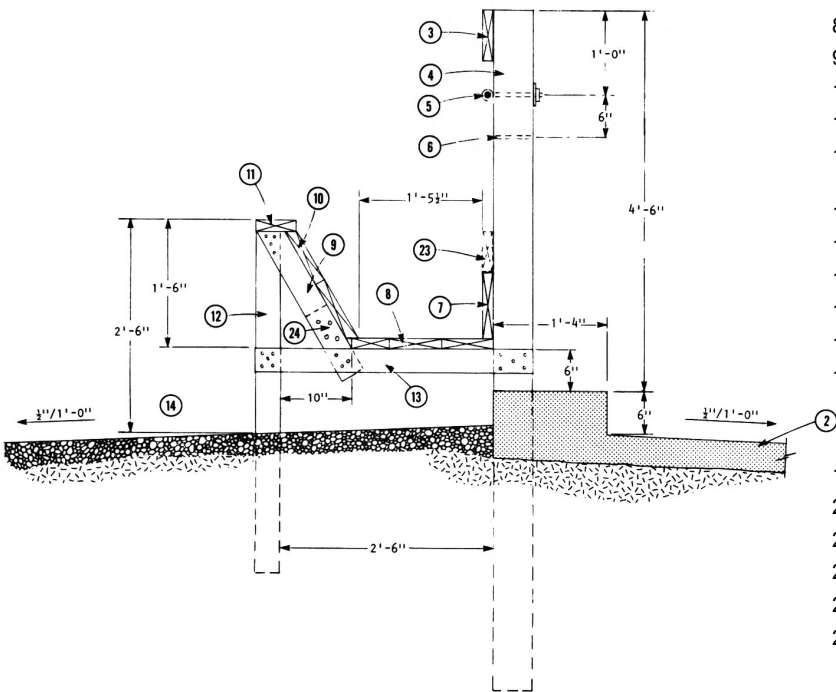
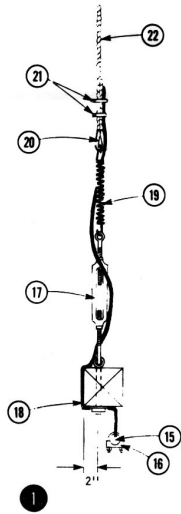
FENCELINE FEEDER (WOOD)

CPS
 PLAN 1480 NEW 10:74

This plan shows details for the construction of an all-wooden fence-line feed bunk which may be used with beef or dairy cattle.

The manger part of the feeder is constructed using nominal 2 inch planking and is supported by pressure-treated posts to give increased length of life. The plan suggests the use of a single cable for headrail which is kept under tension using a large spring with a turnbuckle for adjustment. The height of this cable can be adjusted for size of cattle. The plan also shows detail for a 6" concrete step to prevent the possibility of cattle fouling the manger with manure droppings.

This feeder is usually used along the edge of an open feedlot. In this case the driveway adjacent to the feeder should be paved or constructed of compacted gravel, and on the feedlot side there should be at least a paved feeding strip that is well-drained and regularly cleaned.



- 1 plan of cable attachment and grounding for lightning protection (both ends of cable)
- 2 4" concrete apron, width to exceed cleaning tractor width
- 3 2" x 8" header plank
- 4 4" x 6" x 8'-0" treated posts @ 8'-0" o.c., 6" x 6" treated posts at each end (substitute round posts if preferred)
- 5 1/2" x 8" eye bolt
- 6 for smaller cattle, relocate cable
- 7 2" x 10"
- 8 feeder bottom, 2" planks
- 9 2" x 4" supports, 1 each side of post 12
- 10 2 - 2" x 10", edges bevelled
- 11 2" x 6"
- 12 4" x 4" x 4'-0" pressure treated posts @ 8'-0" o.c., 4" x 6" treated posts at each end
- 13 2" x 4" cross beam, 1 each side of posts 12 & 4
- 14 feed alley, paving optional
- 15 1/2" galv. pipe or 5/8" galv. rod 10' into ground
- 16 ground clamp
- 17 1/2" turnbuckle
- 18 ground cable, 00 copper conductor or equal
- 19 spring
- 20 3/8" thimble
- 21 2 - 3/8" cable clamps
- 22 3/8" galvanized cable
- 23 add 2" x 6" for full feeding with larger cattle
- 24 4" x 4" spacer block between 9 & 13 (cut from post 12)