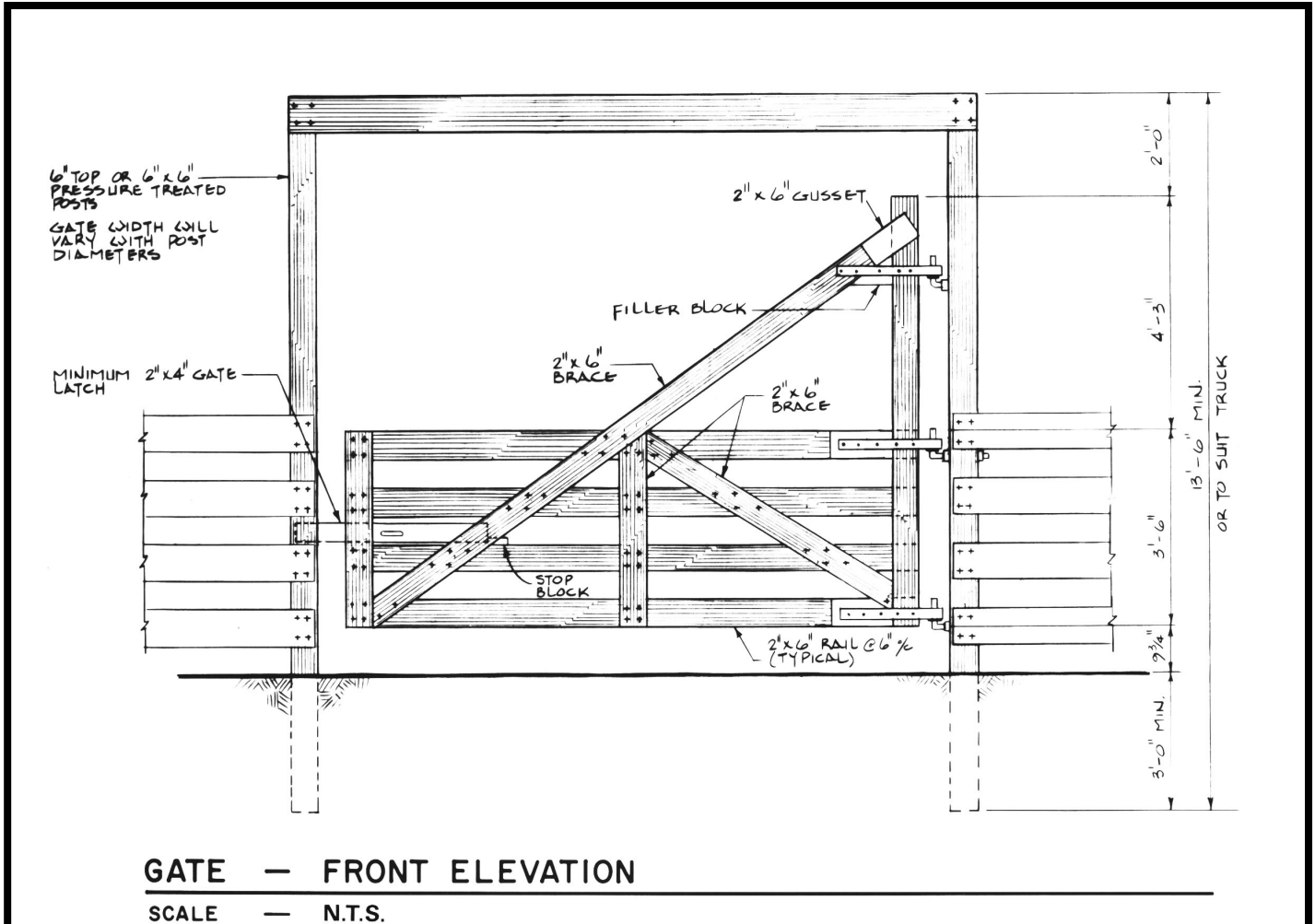
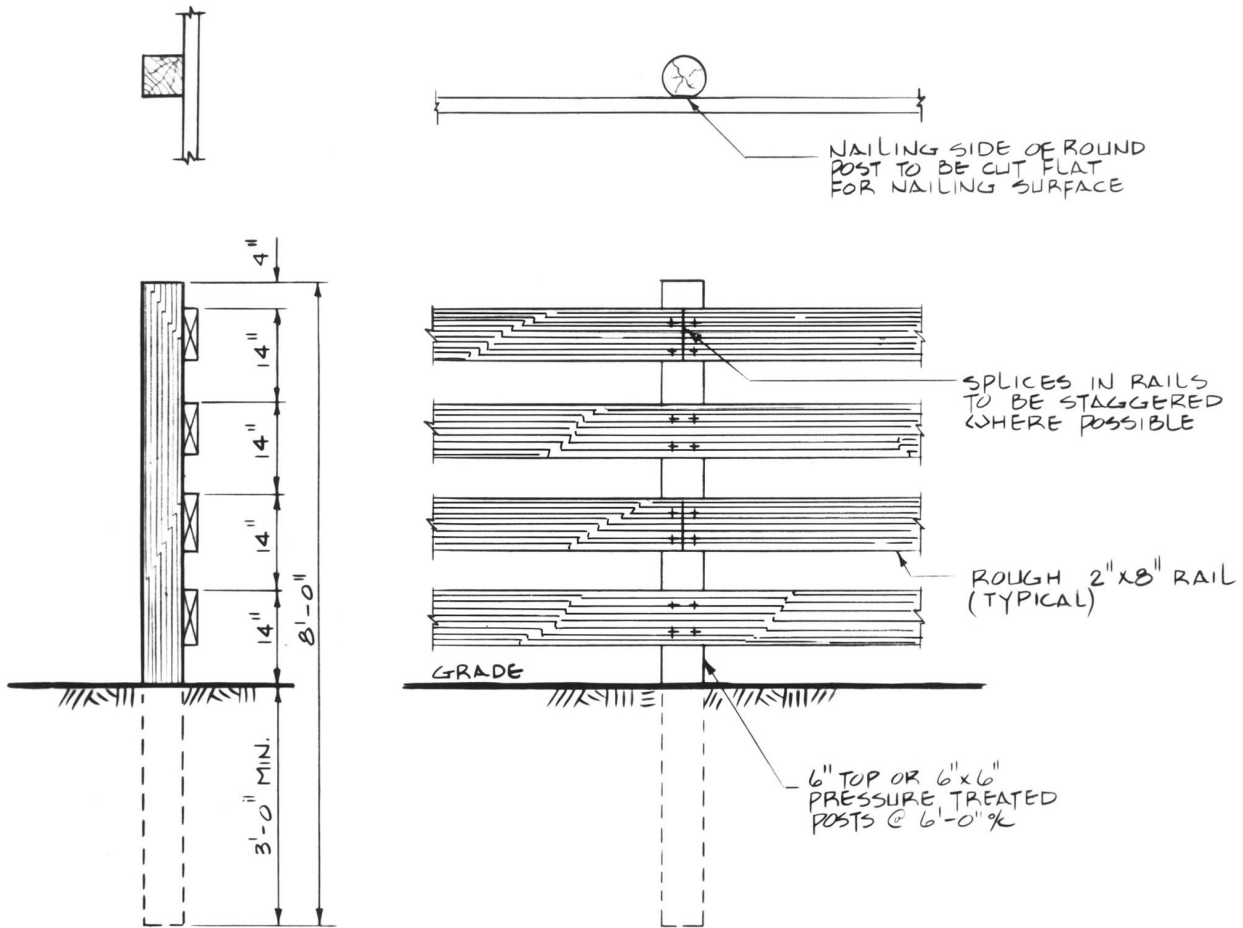


# CORRAL GATE AND FENCING



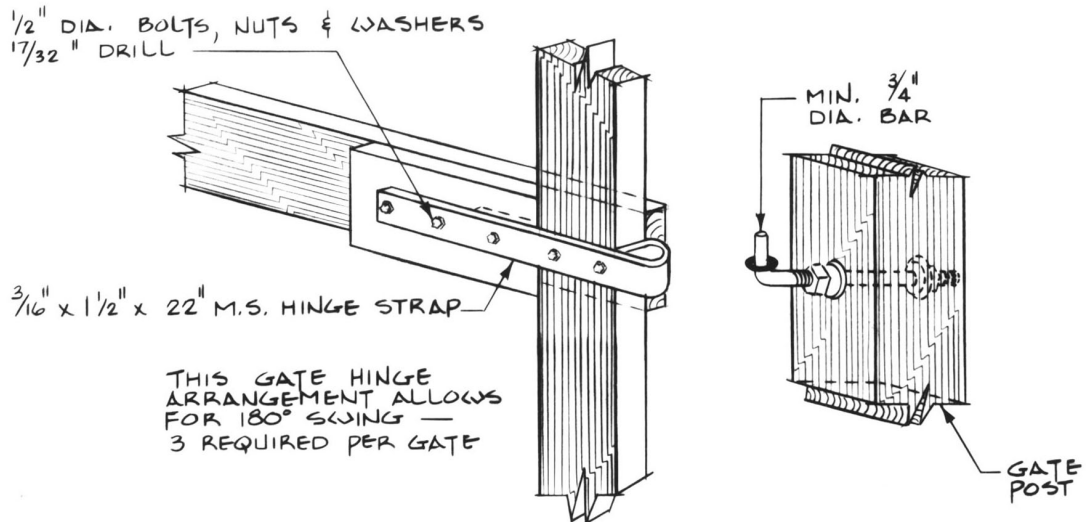
This plan gives construction details for fencing and gates for beef cattle corrals.

Either round or square posts can be used. Fence rails are 2" x 8"s. The plan gives rail spacing details for a 5 foot high corral fence and a 6 foot high chute fence.



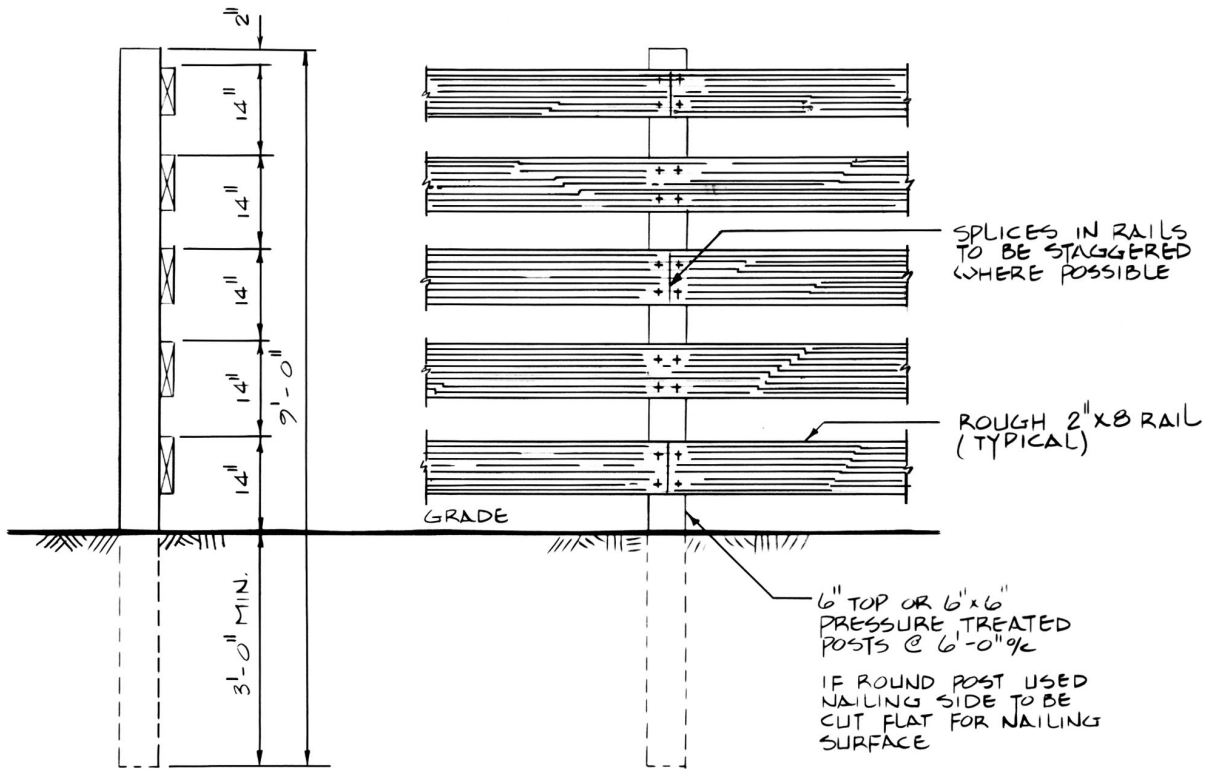
## CORRAL FENCE ARRANGEMENT

SCALE - N.T.S.



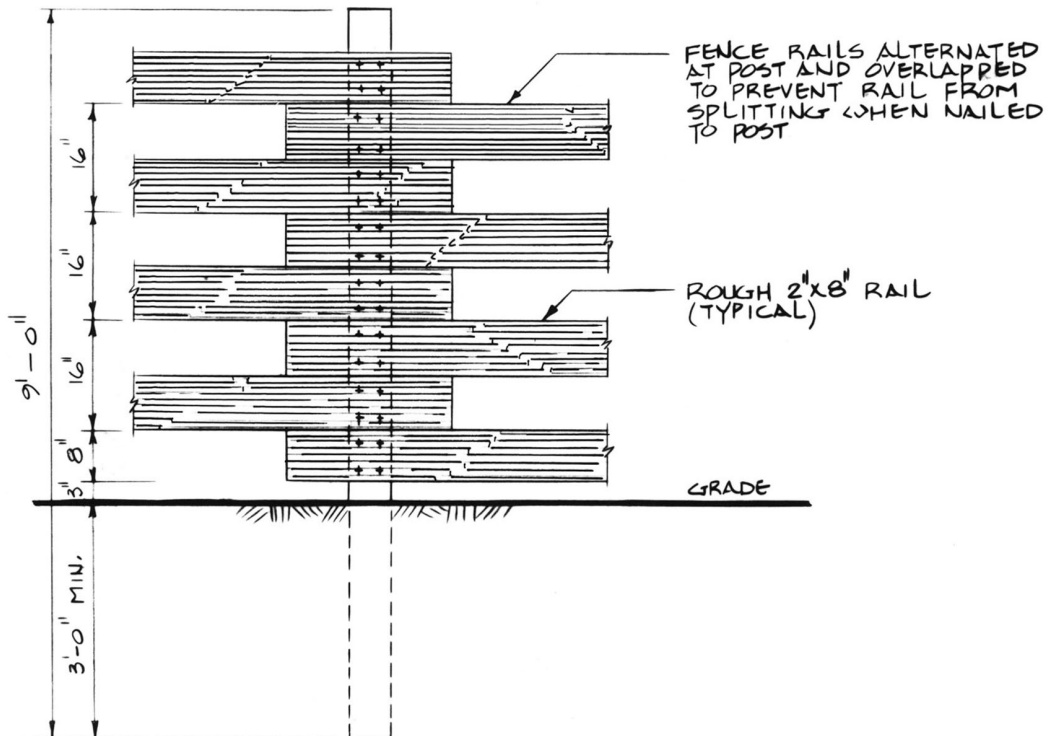
## HINGE ARRANGEMENT

N.T.S.



## CHUTE FENCE ARRANGEMENT

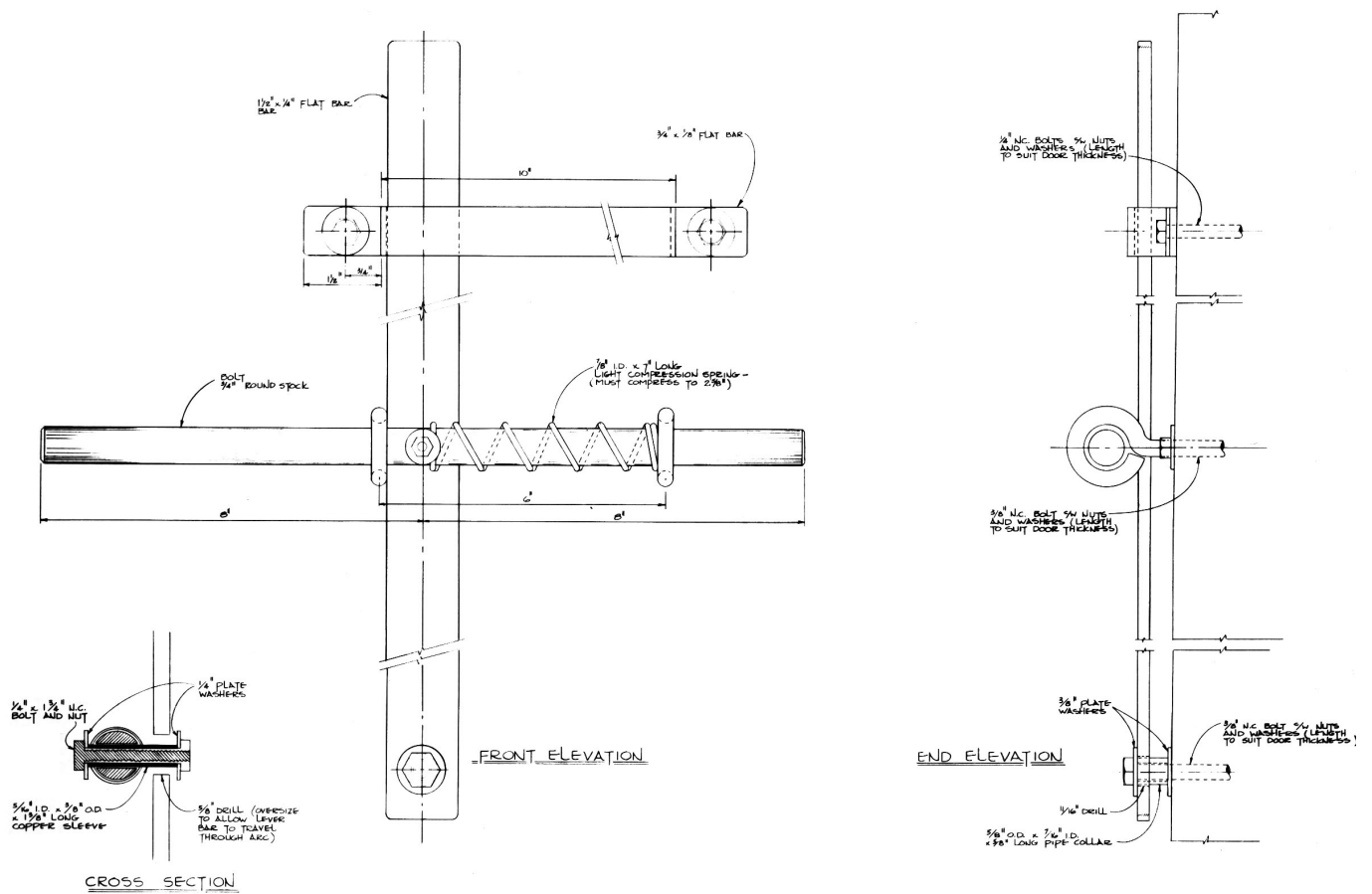
SCALE - N.T.S.



## CORRAL & CHUTE FENCE ALTERNATE

SCALE - N.T.S.

# GATE LATCH FOR WORKING CORRALS



## GATE LATCH FOR WORKING CORRALS

This spring-loaded gate latch can be fabricated from readily available materials.

The 1 1/2" x 1/4" flat bar handle extends above the top of the gate to allow opening and closing of the gate.