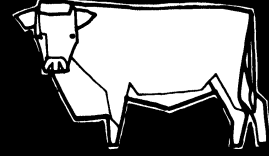




BRITISH
COLUMBIA

Ministry of Agriculture, Food and Fisheries

Agricultural Building Systems Handbook

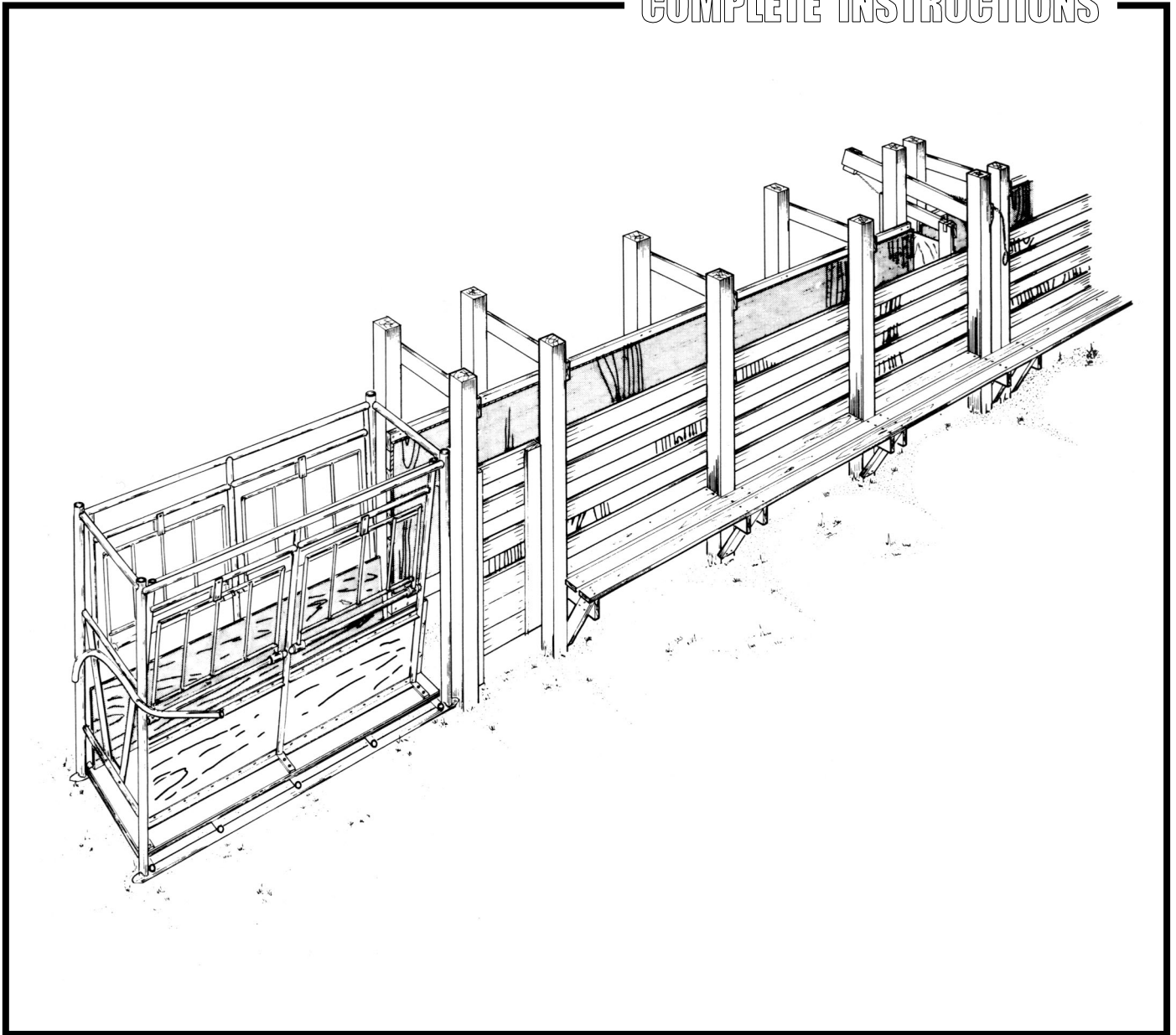


PLAN

315-03

WORKING CHUTE

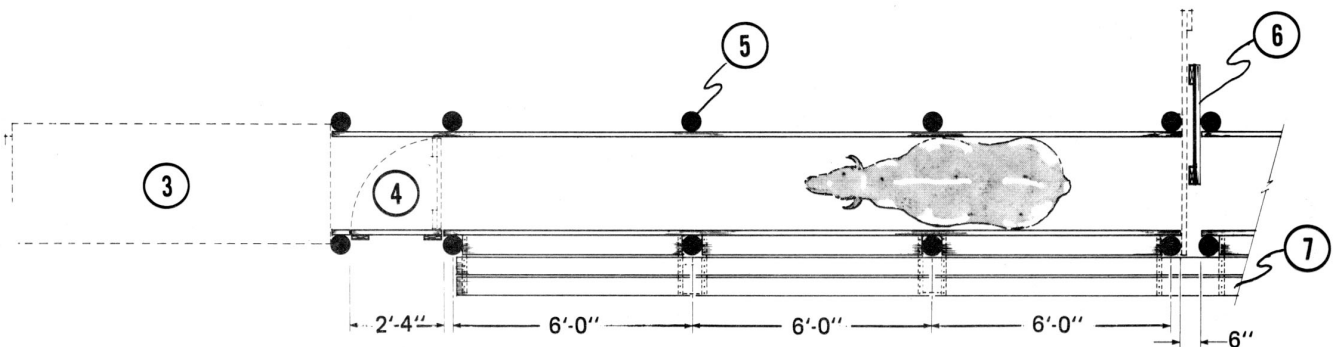
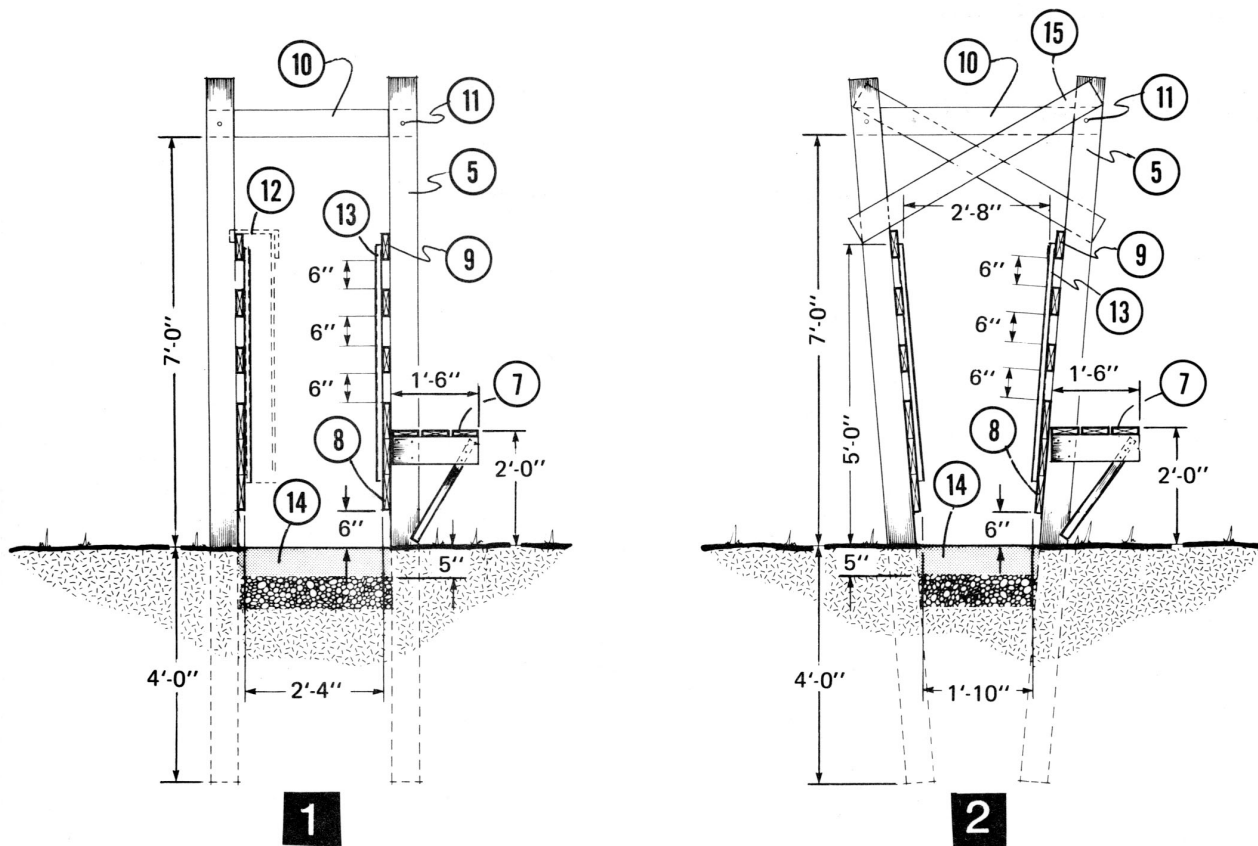
COMPLETE INSTRUCTIONS



DEVELOPED BY CANADA PLAN SERVICE

WORKING CHUTE

CPS
PLAN 1813 REVISED 84:07



- | | |
|--|---|
| <ul style="list-style-type: none"> 1 straight chute section 2 alternate tapered chute section; chute dimensions recommended for feeder cattle up to 1000 lb; heavier cattle and some exotic breeds may need a wider chute 3 commercial pipe frame headgate and cattle squeeze 4 access gate to close across chute 5 5" top dia., or 4" x 6" x 12'-0" CCA pressure-treated sawn poles 6 blocking gate (see leaflet 1814) 7 catwalk 3 - 2" x 6" on 2" x 6" each side of pole, 2" x 6" x 2'-0" brace to pole ⑤ | <ul style="list-style-type: none"> 8 3 - 2" x 8" bottom rails 9 3 - 2" x 6" top rails 10 2" x 6" cross-tie 11 8" carriage bolt 12 optional filler (for handling young cattle); 2" x 6" @ 2'-0" oc and 4'-0" high plywood, suspend from ⑨ 13 3/8" exterior select sheathing plywood, face grain vertical 14 optional rough-textured concrete base on compacted granular fill 15 temporary cross-bracing to pole pairs while locating and tamping into position |
|--|---|