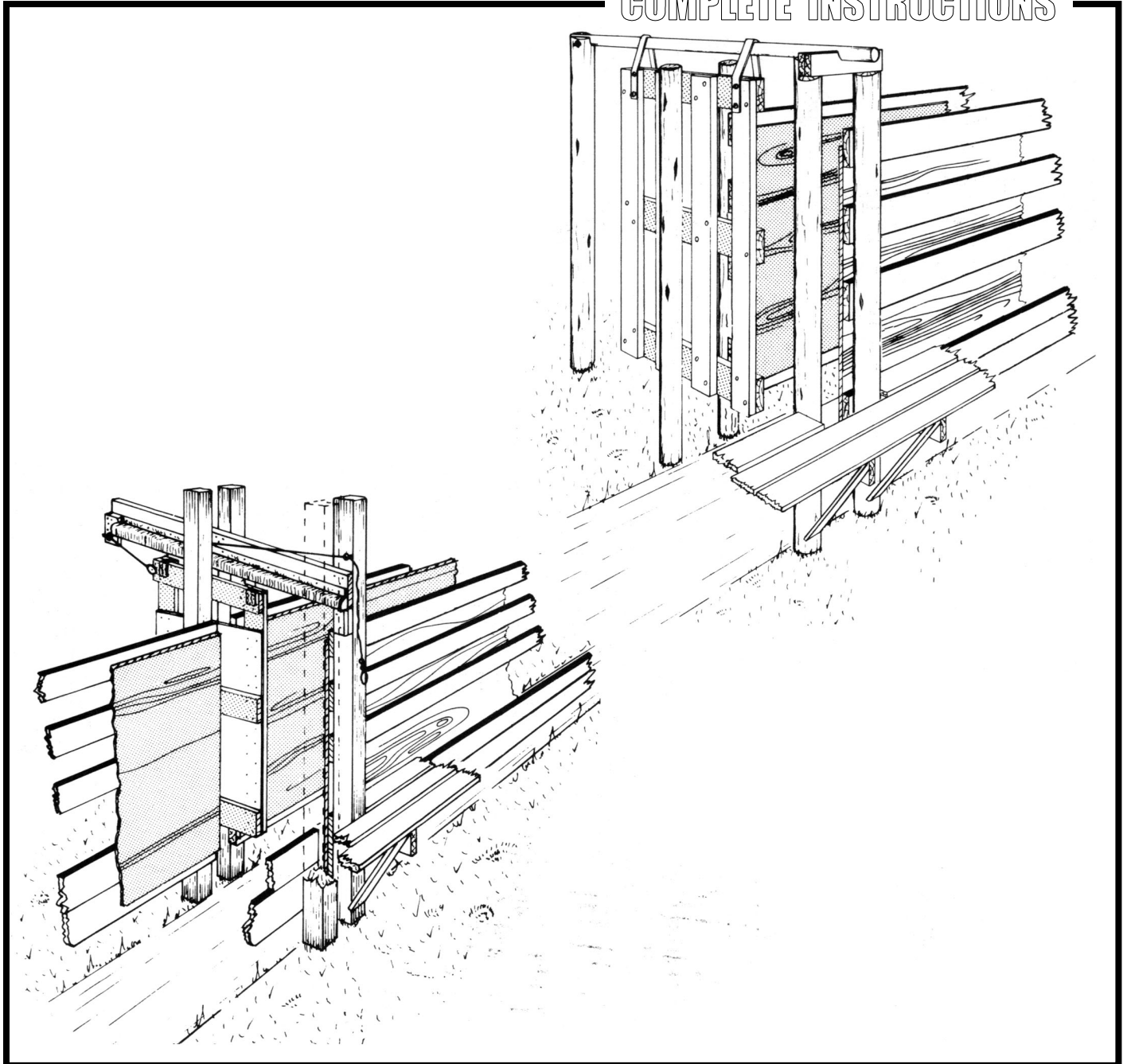


BLOCKING GATES

COMPLETE INSTRUCTIONS



DEVELOPED BY CANADA PLAN SERVICE

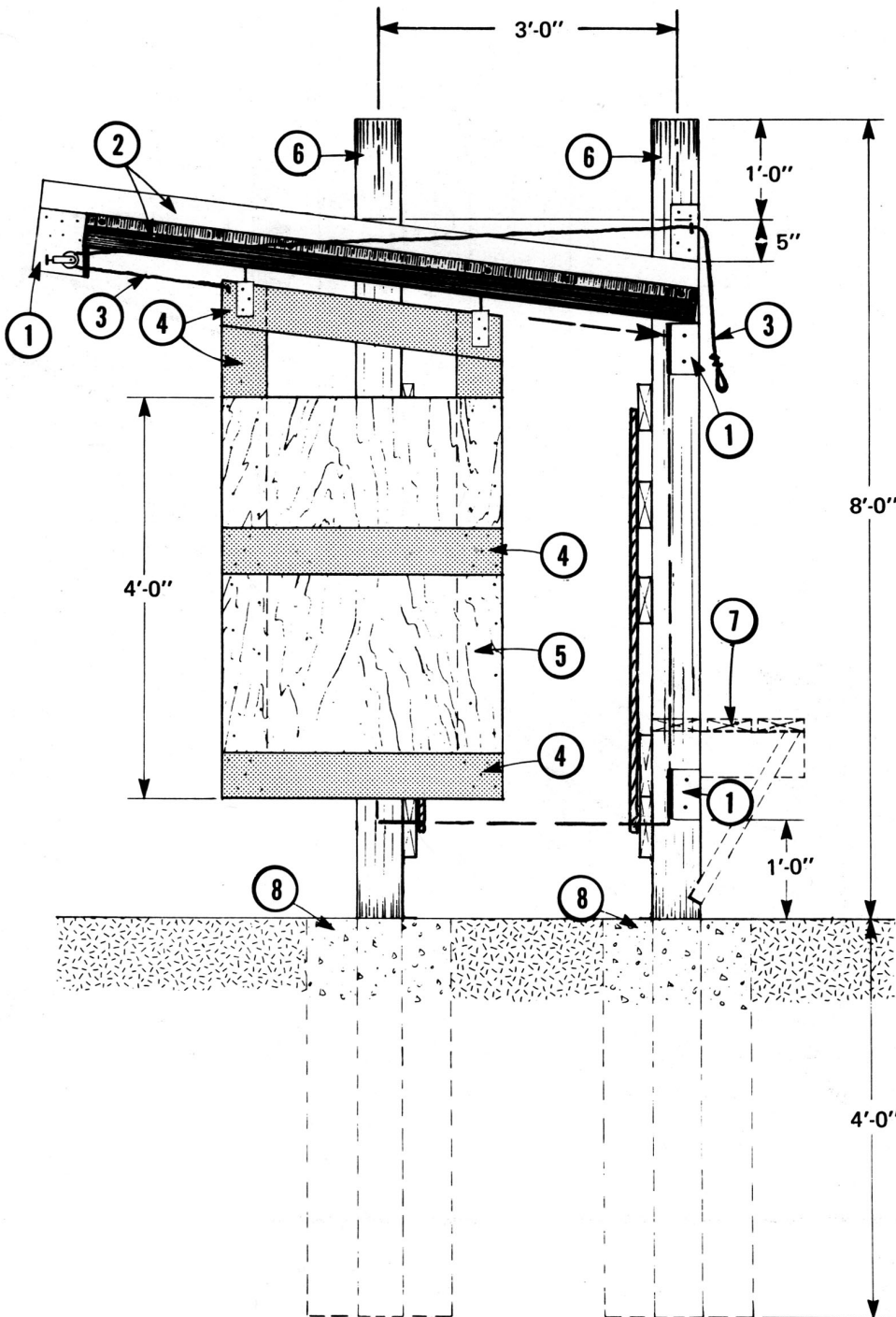
315-04

BLOCKING GATES

CPS
PLAN 1814 REVISED 84:01

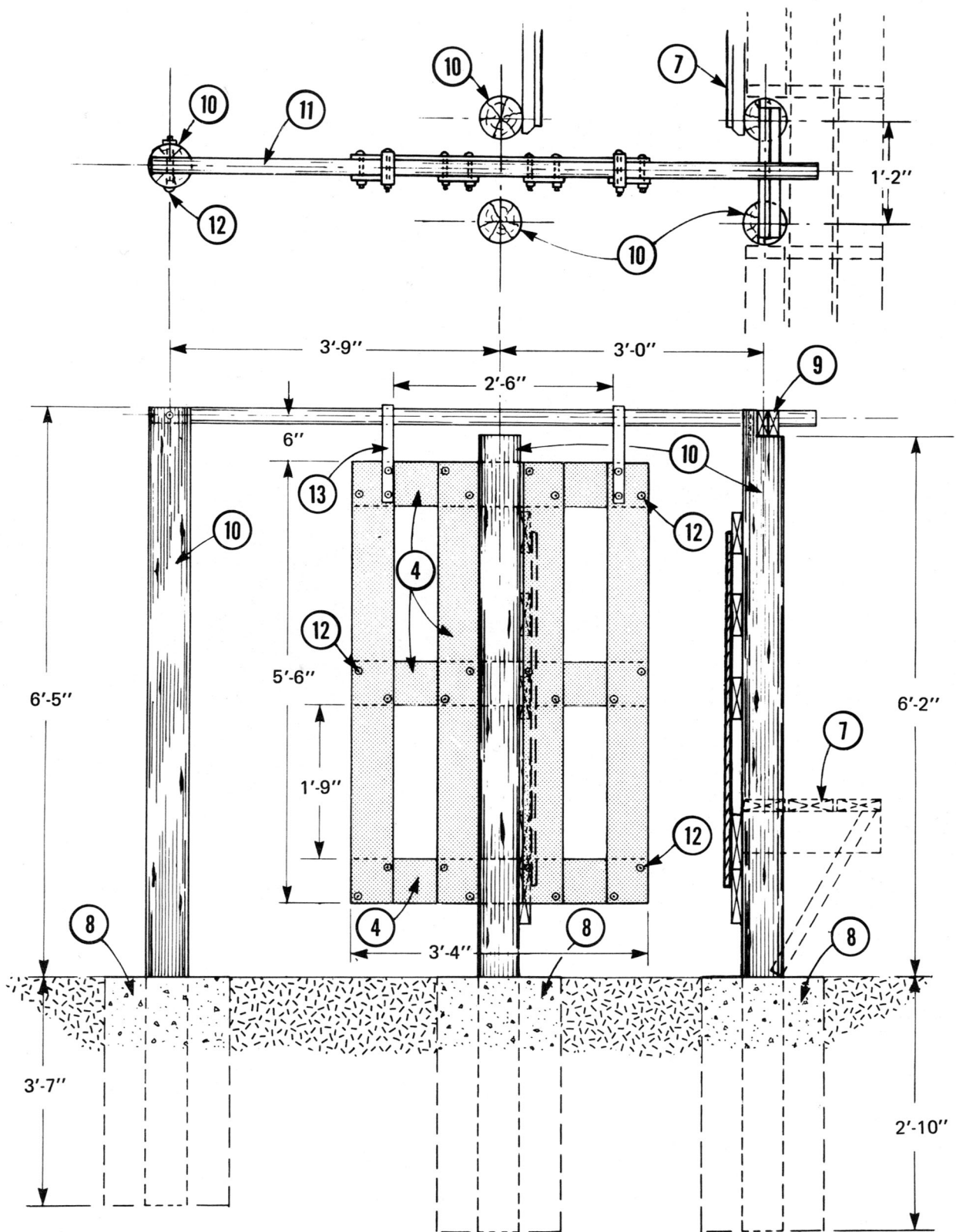
This plan is for a blocking gate that will control cattle moving through a working chute such as 315-03. The blocking gate is used wherever cattle must be stopped or prevented from backing up.

Two designs are shown: a plywood-covered gate running on rollers and inclined sliding-door track, and a plank gate running on greased pipe. Gate and track details can be interchanged.



- 1 gate stop with rubber bumpers
- 2 2" x 6" x 8'-0" track board, slide door track & roller hardware
- 3 control rope through pulley & screw eye on spacer block, loop & bowline knot
- 4 2" x 6"
- 5 3/4" plywood
- 6 4" x 6" x 12'-0" CCA – pressure treated post
- 7 working chute & catwalk, see leaflet 315-03
- 8 concrete backfill
- 9 2" x 4" stop blocks
- 10 6" diam x 9'-0" CCA – pressure treated post
- 11 2" galv. pipe 7'-6" long
- 12 3/8" carriage bolts with nuts & washers
- 13 1/8" x 1 1/2" strap iron

SELF CLOSING GATE



GREASED PIPE GATE