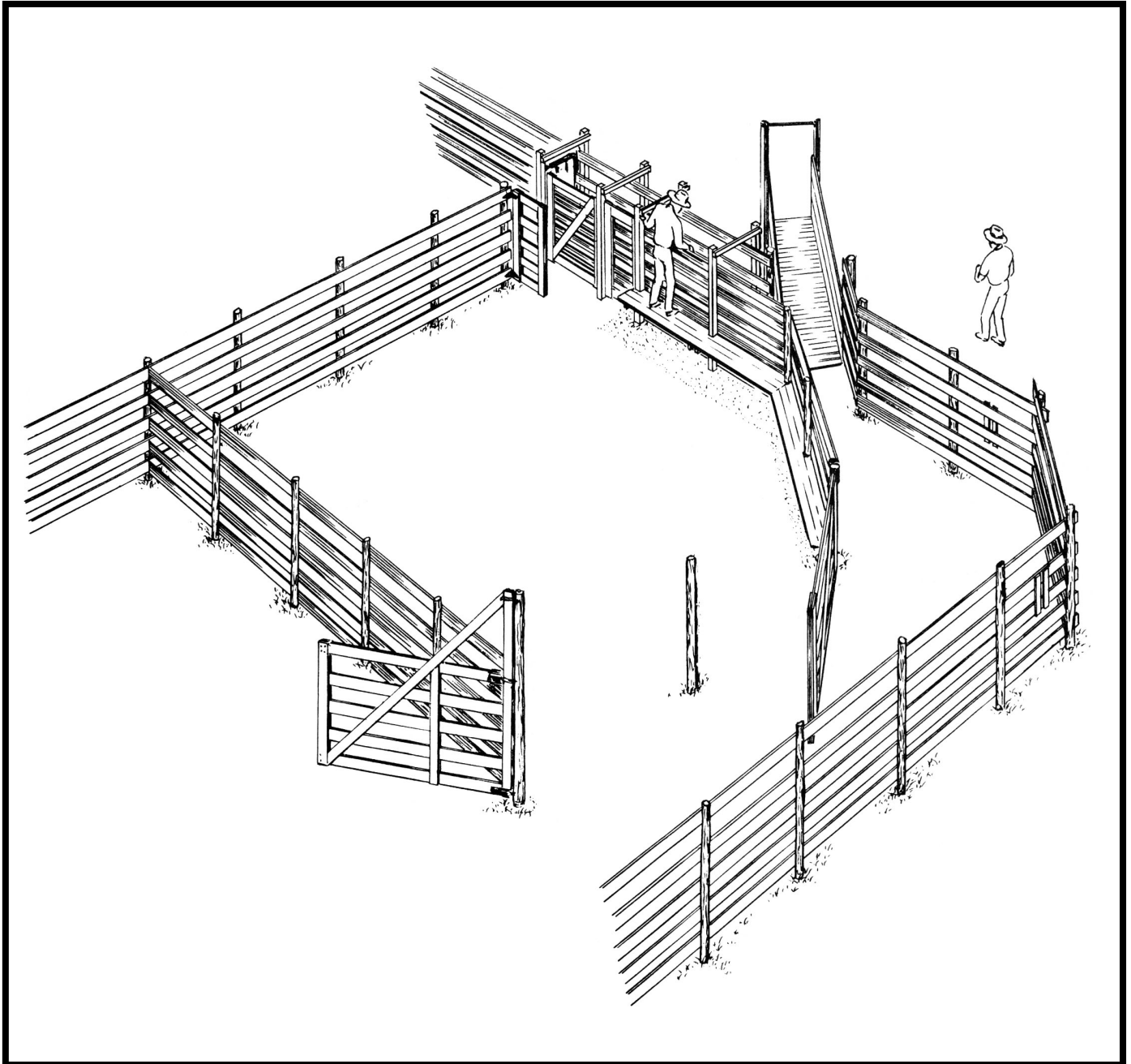


MINIMUM WORKING CORRAL



DEVELOPED BY CANADA PLAN SERVICE

315-61

MINIMUM WORKING CORRAL

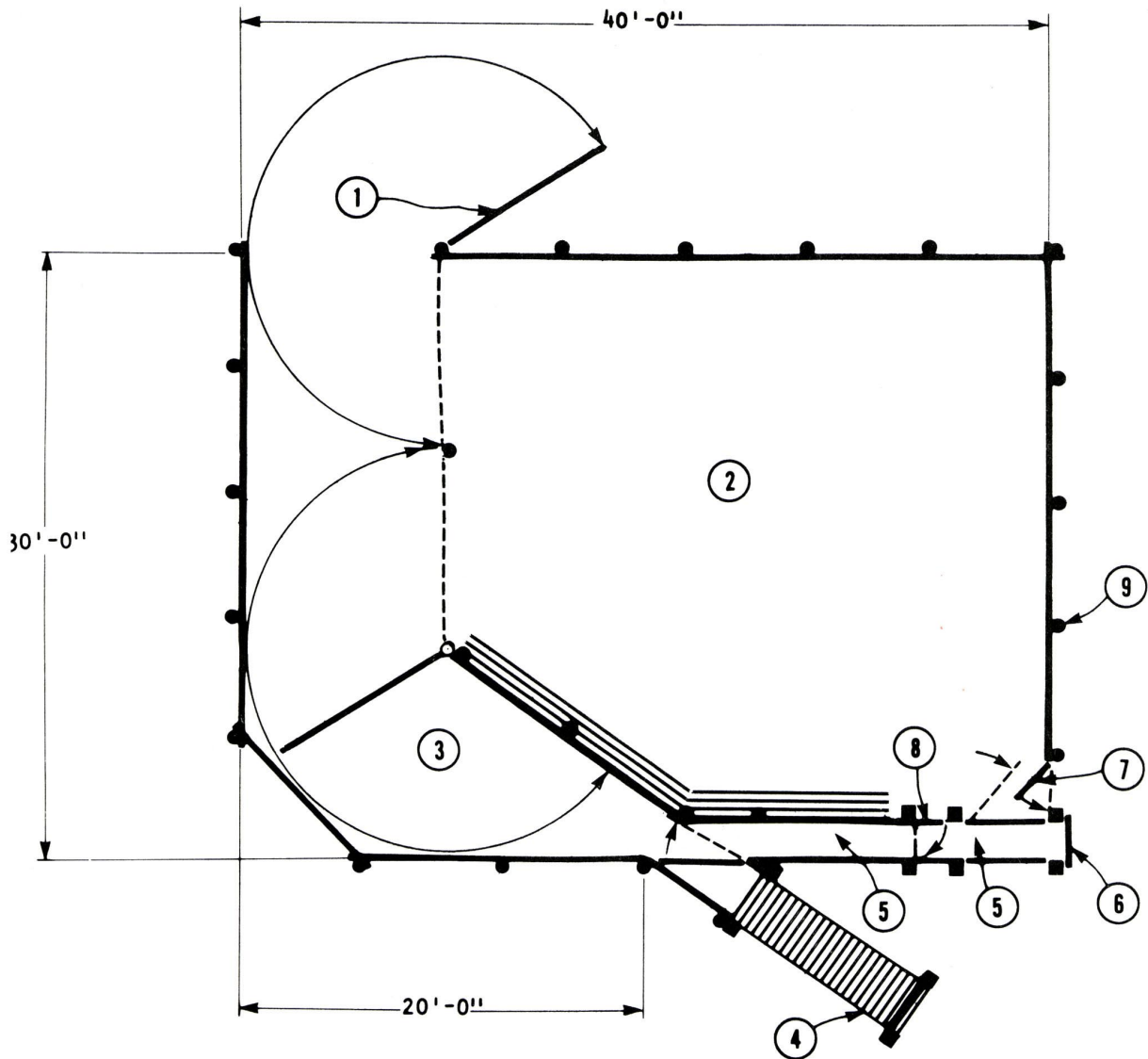
CPS
PLAN 1831 NEW 1:75

This is a minimum handling facility for the cattleman with a few head who handles cattle infrequently during a year, or for a separate pasture facility remote from the central facilities of a cow-calf operation. It consists of a holding pen, crowding area, and small working chute.

A semi-circular crowding pen with a crowding gate (leaflet 315-02) helps squeeze animals into the chute with minimum effort. The same crowding unit can move

animals into a loading chute (315-08) located adjacent to the working chute (315-03). See 315-01 for other fencing and gate details.

This corral has a short working chute (longer is preferred). It may be further equipped with a home-made headgate or a commercial squeeze with attached headgate. As the herd or the operator's needs increase this layout can be readily expanded.



- | | | | |
|---|---|---|---|
| 1 | 10'-0" gate (315-01) | 6 | pipeframe headgate or commercial headgate |
| 2 | holding pen | 7 | access gate |
| 3 | crowding pen with crowding gate (315-02) | 8 | optional man gate, same width as chute |
| 4 | loading chute (315-08) | 9 | posts 6'-0" o.c. |
| 5 | working chute (315-03) including cattle squeeze or commercial squeeze | | |