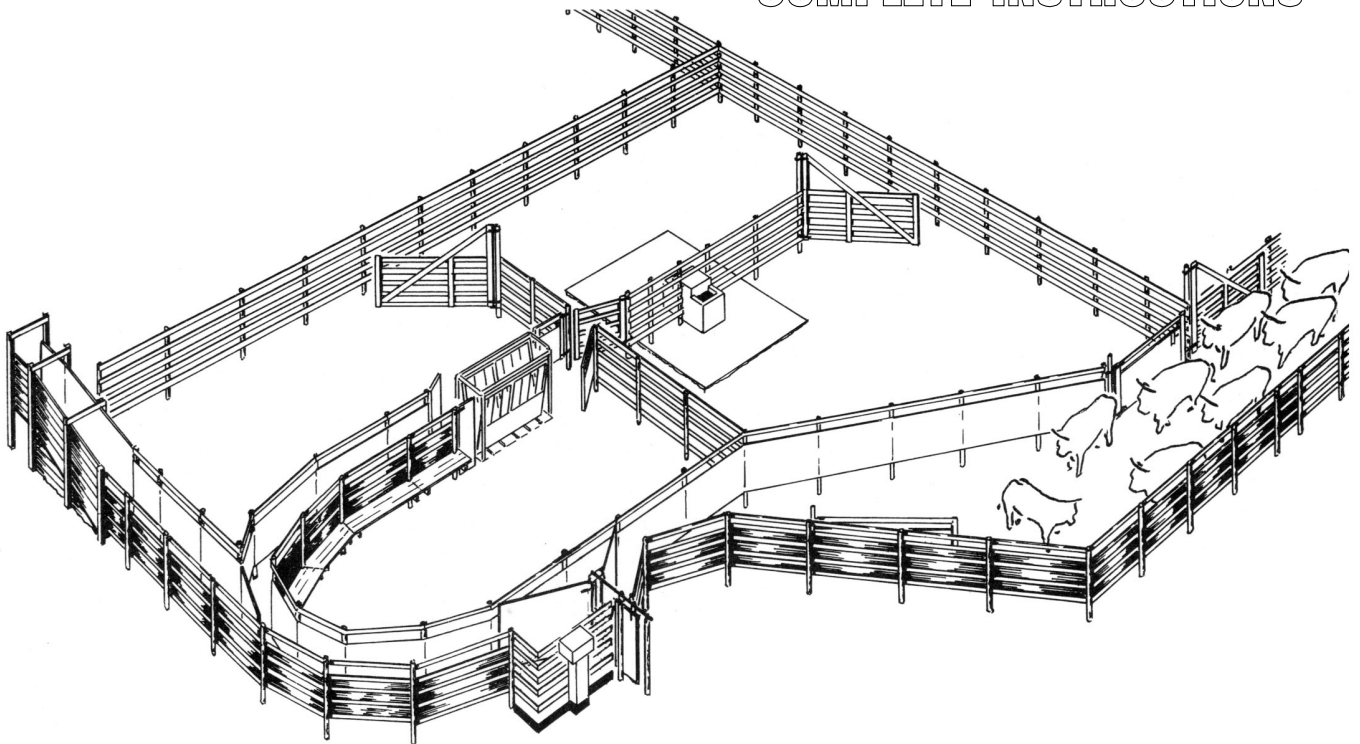


LARGE WORKING CORRAL

COMPLETE INSTRUCTIONS



CPS
PLAN 1835 REVISED 85-07

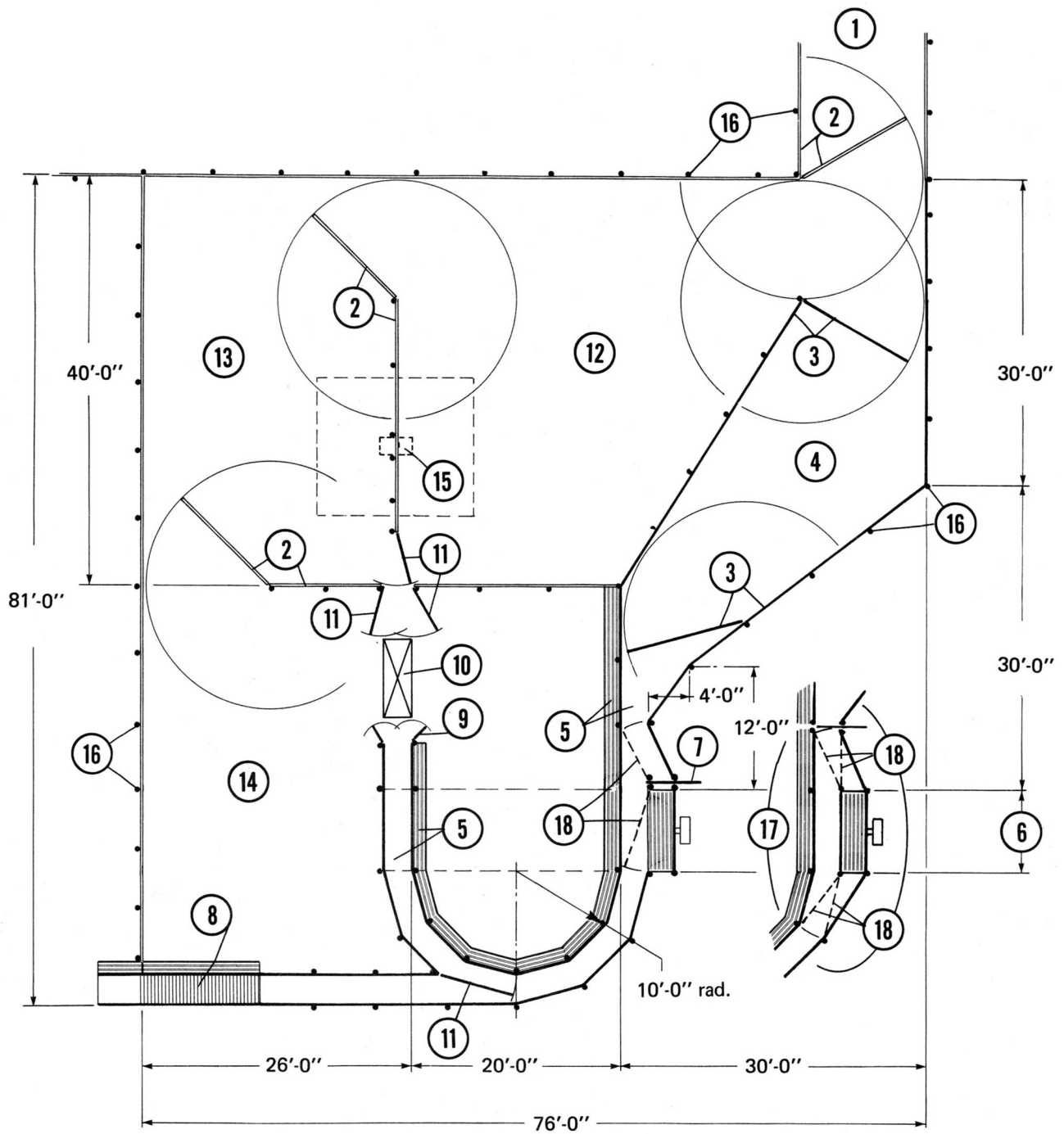
This plan is for a compact, effective cattle handling corral that can easily work a breeding herd of 100 cows including all their calves and feeders. It includes the popular curved chute, which has a minimum 10 ft inside radius. When laying out the corral, this radius can be increased easily to hold more animals within the chute; a larger radius is actually recommended if space allows.

The plan is to be used together with other CPS plans as indicated, such as fencing, crowding gates and blocking gates. The scale ⑥ and the squeeze with headgate ⑩ would likely be purchased. The scale is optional, and is

located beside (but not in line with) the working chute, to decrease wear and maintenance on its mechanism.

Three (or possibly four) sorts are possible as cattle leave the headgate. Most operators prefer to keep the area within the curved chute free of cattle (this eliminates the fourth pen). This area may contain service facilities such as water hydrant, power pole, and a small building for medical equipment and supplies. Lay out the entire corral with measuring tape, stakes and string, making the necessary modifications to fit the site before digging postholes. Build the corral fencing first, then build gates to fit the openings.

DEVELOPED BY CANADA PLAN SERVICE



- | | | | |
|---|--|----|--|
| 1 | cattle alley, access from feedlot or pasture | 10 | cattle squeeze with headgate |
| 2 | 12'-0" gate and open corral fencing (see 315-01) | 11 | 5'-0" sorting gate |
| 3 | 12'-0" crowding gate and closed fencing (see 315-02) | 12 | holding pen, approx. 70 head |
| 4 | crowding pen, approx. 80 head | 13 | holding pen, approx. 60 head |
| 5 | working chute with catwalk (see 315-03) | 14 | holding pen, approx. 30 head |
| 6 | scale optional; subtract 8'-0" from overall length if not used | 15 | waterer, if animals are held more than a day |
| 7 | blocking gate (see 315-04) | 16 | post spacing, 8'0" maximum |
| 8 | loading chute (see 315-08) | 17 | optional scale layout |
| 9 | man gate | 18 | bypass gates for scale |