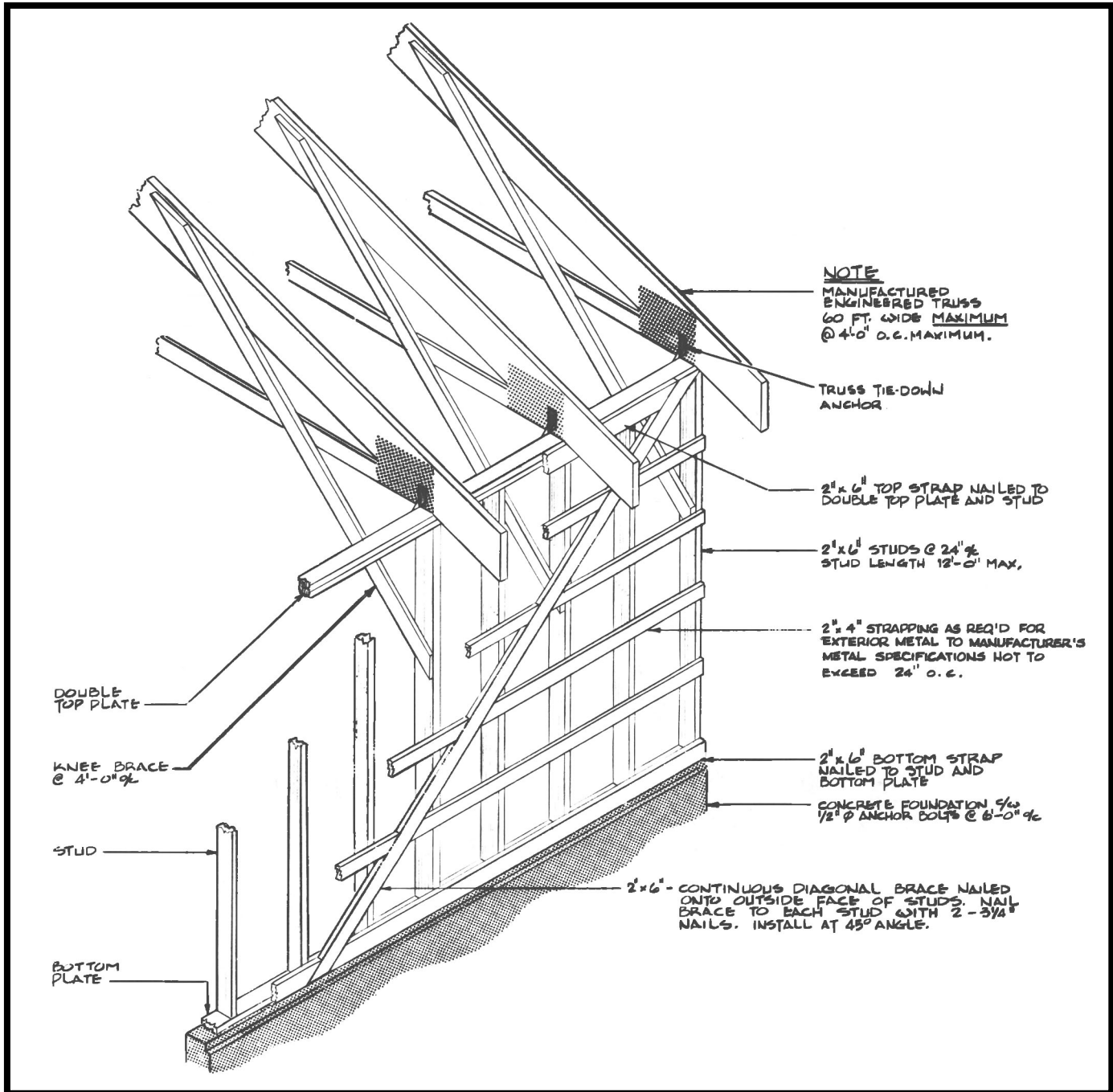




STUD WALL BRACING



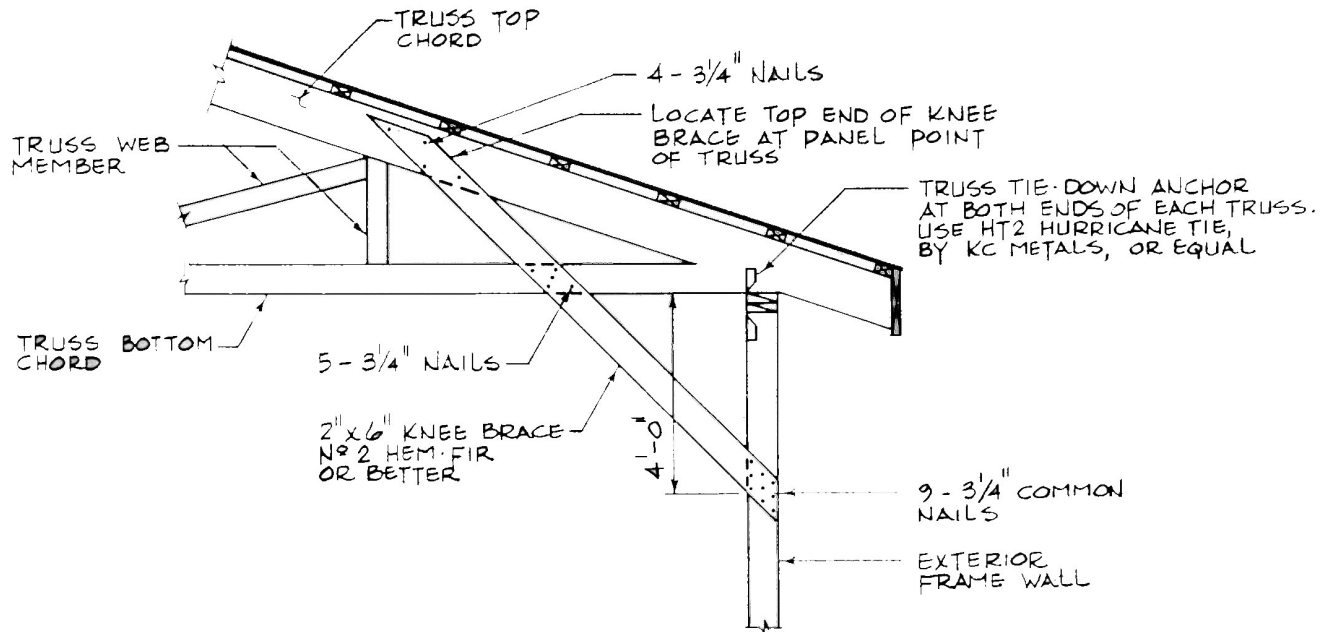
STUD WALL BRACING

This leaflet shows typical wall bracing for stud wall construction.

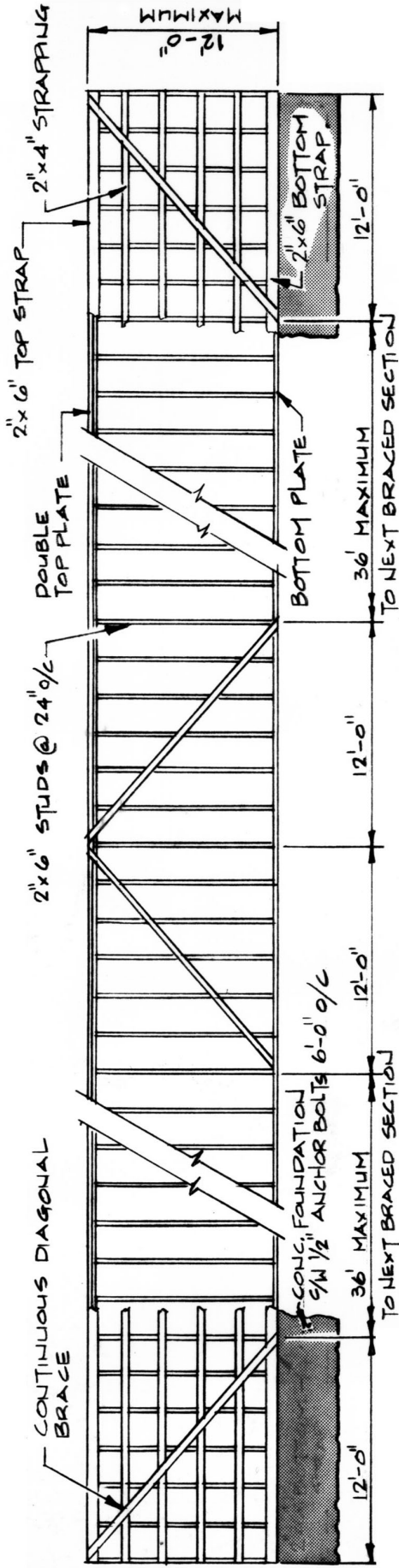
The continuous diagonal bracing should be nailed to the studs at a 30 – 60° angle to prevent the studs from collapsing on each other. Note the maximum spacing between diagonal bracing shown on the drawing.

This leaflet also shows the location and nailing requirements for a knee brace from the outside wall to the truss.

These details are for a maximum stud length of 12 feet and a maximum building width of 60 feet. Design Load: 1:10 hourly wind pressure @ 11 psf (.55 kN/m²). All bracing material to be No. 2 or better S.P.F.



DETAIL – KNEE BRACE



OUTSIDE ELEVATION
CONTINUOUS DIAGONAL BRACING