

# FREE STALLS

The ideal free stall should provide a stress-free environment for the animal and a low-cost, low-care facility for the operator.

A free stall should be more attractive and comfortable than any other resting location within the barn. There is no such thing as a perfect stall; however, with proper construction, utilization and care, a high degree of both comfort and cleanliness can be economically provided.

The stall divider, or partition, separates adjacent resting spaces and serves to control the position of the cow without unduly restricting her movement.

Galvanized dividers, featured in this leaflet plan, are by far the most popular type, requiring a minimum amount of material, a factor important in maximizing cow visibility and encouraging natural cross ventilation in a barn, especially during the summer season.

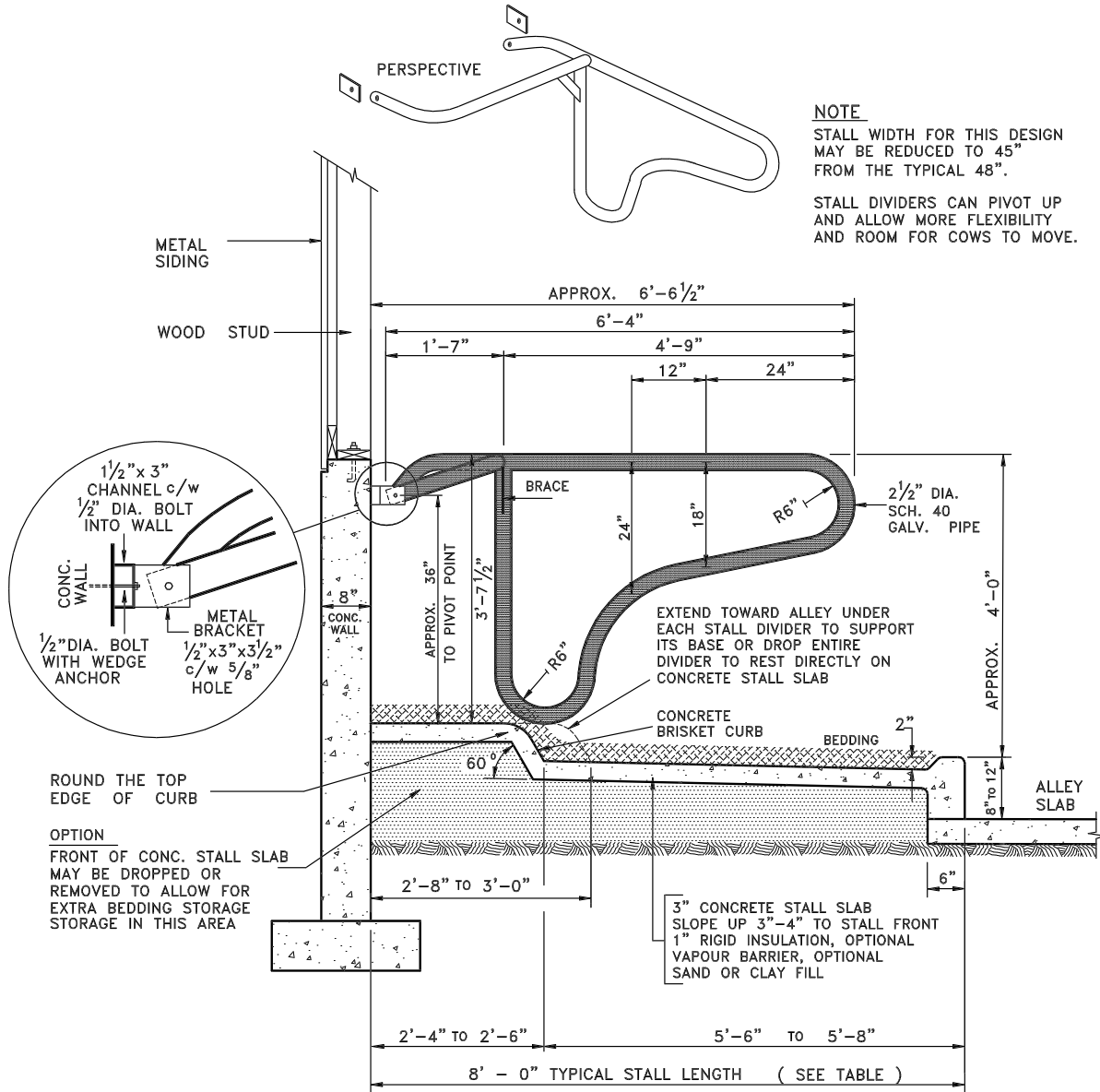
Recommended stall dimensions for various sizes of cattle are given in **Table 1**.

See **Factsheet 326.200-3** for more free stall information on topics such as animal comfort, stall dividers, stall base and drainage, restrainers, bedding and management.

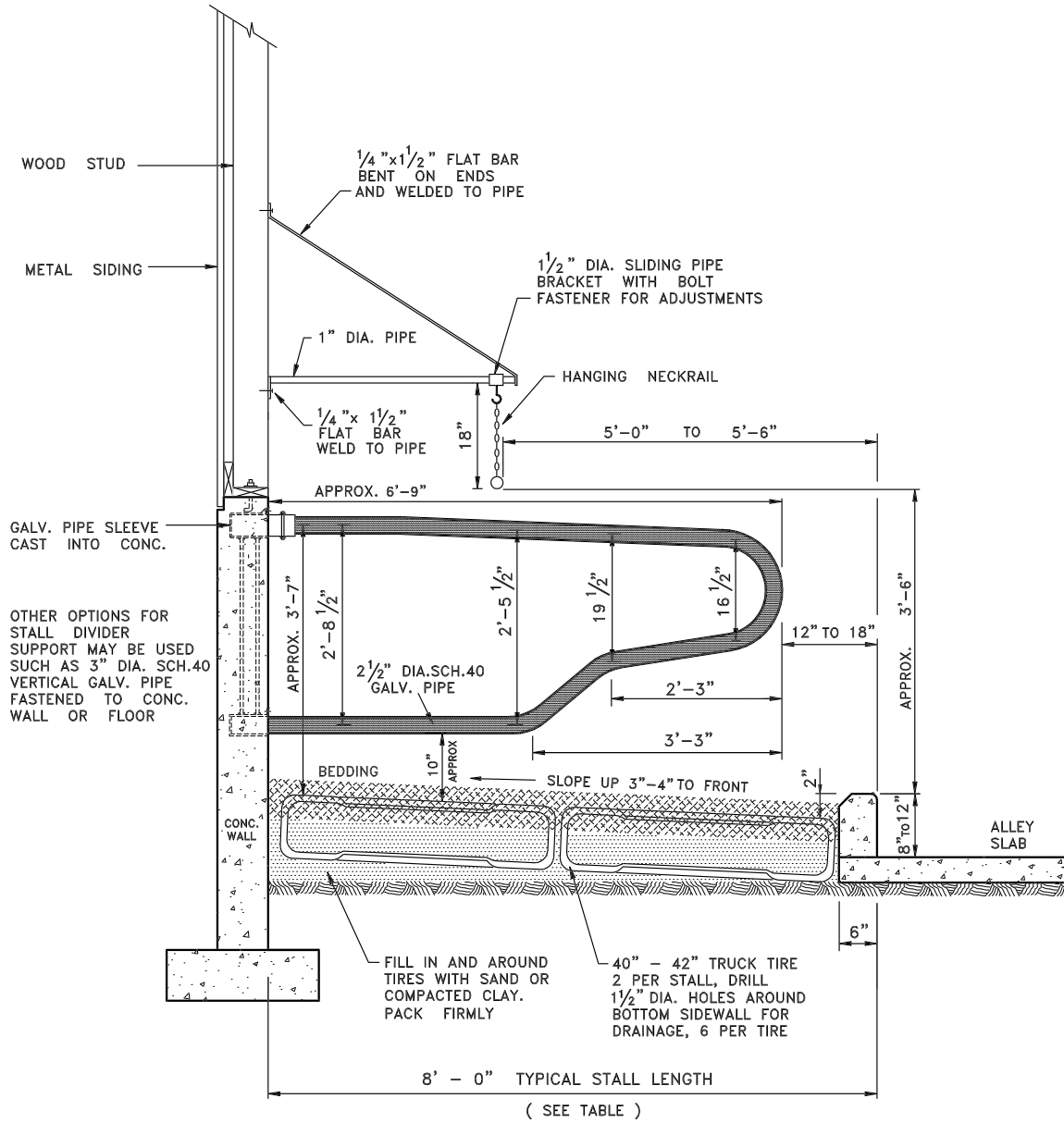
Table 1 STALL DIMENSIONS FOR DAIRY CATTLE						
SIZE AND AGE OF CATTLE TO BE HOUSED		STALL WIDTH	STALL LENGTH		NECK RAIL POSITION (diagonal distance from alley side of curb to neck rail)	HEIGHT (top of back curb to top of divider)
			unpaved	paved		
<b>CALVES</b> 300 lb average:	3 to 6 months (range 250B350 lbs)	2'- 3"	4'- 0"	3'- 9"	----	2'- 4"
<b>CALVES</b> 500 lb average:	6 to 10 months (range 400B550 lbs)	2'- 8"	5'- 0"	4'- 9"	---	2'- 8"
<b>HEIFERS</b> 700 lb average:	10 to 15 months (range 600B800 lbs)	3'- 6"	6'- 9"	6'- 6"	---	2'- 10"
<b>HEIFERS</b> 1000 lb average:	15 to 24 months (range 800B1200 lbs)	3'- 6"	7'- 0"	6'- 9"	5'- 6"	3'- 0"
<b>COWS</b>	1200 to 1400 lbs	3'- 9"	7'- 6"	7'- 3"	6'- 2"	3'- 4"
<b>COWS</b>	over 1400 lbs	4'- 0"	8'- 0"	8'- 0"	6'- 4"	3'- 6"

# PIVOT STALL DIVIDER

## WITH FRONT HINGE ATTACHMENT AND CONCRETE CURB

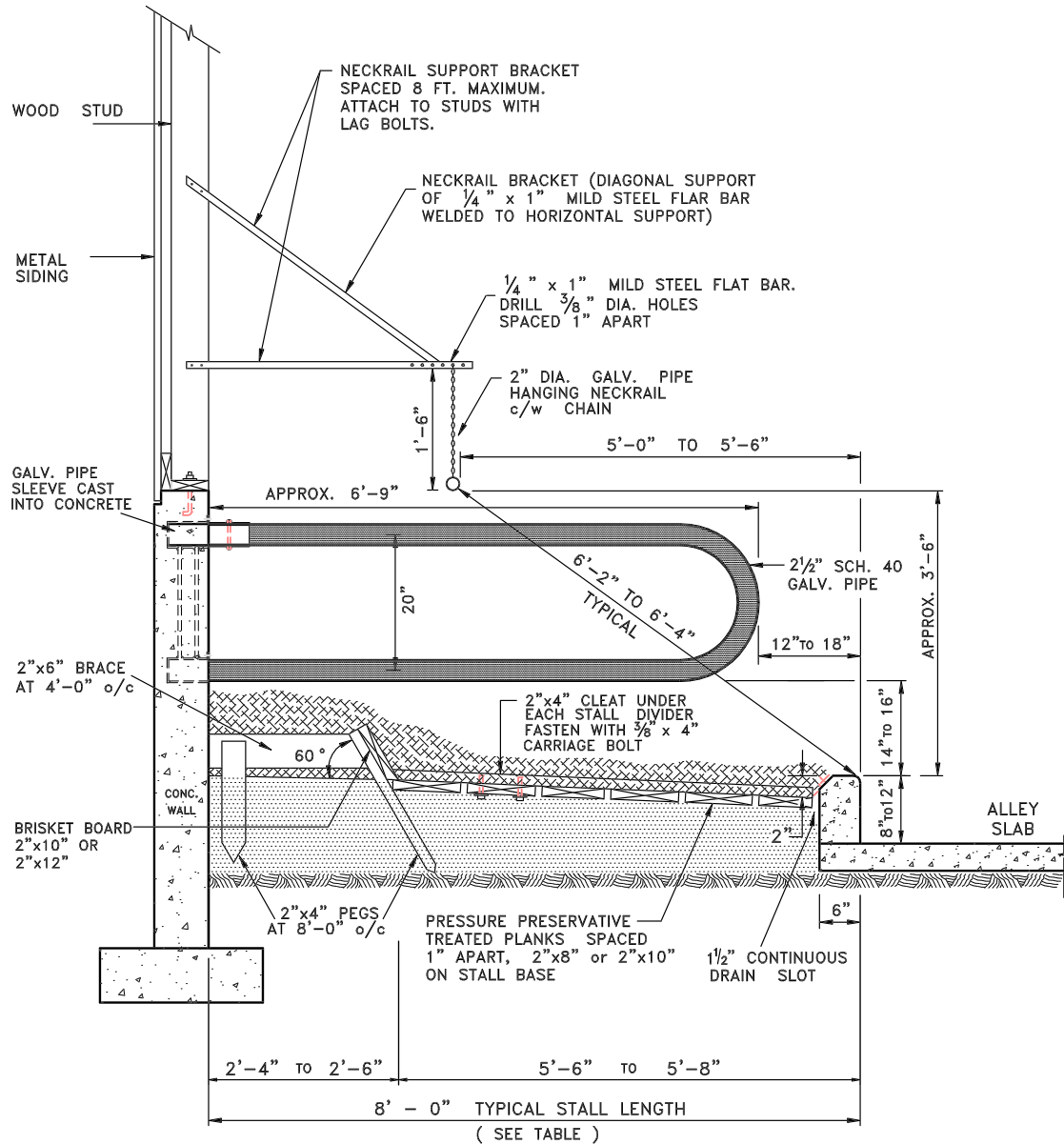


**SUPER COMFORT STYLE DIVIDER  
WITH TIRE BED AND HANGING NECKRAIL**



# LOOP STYLE DIVIDER

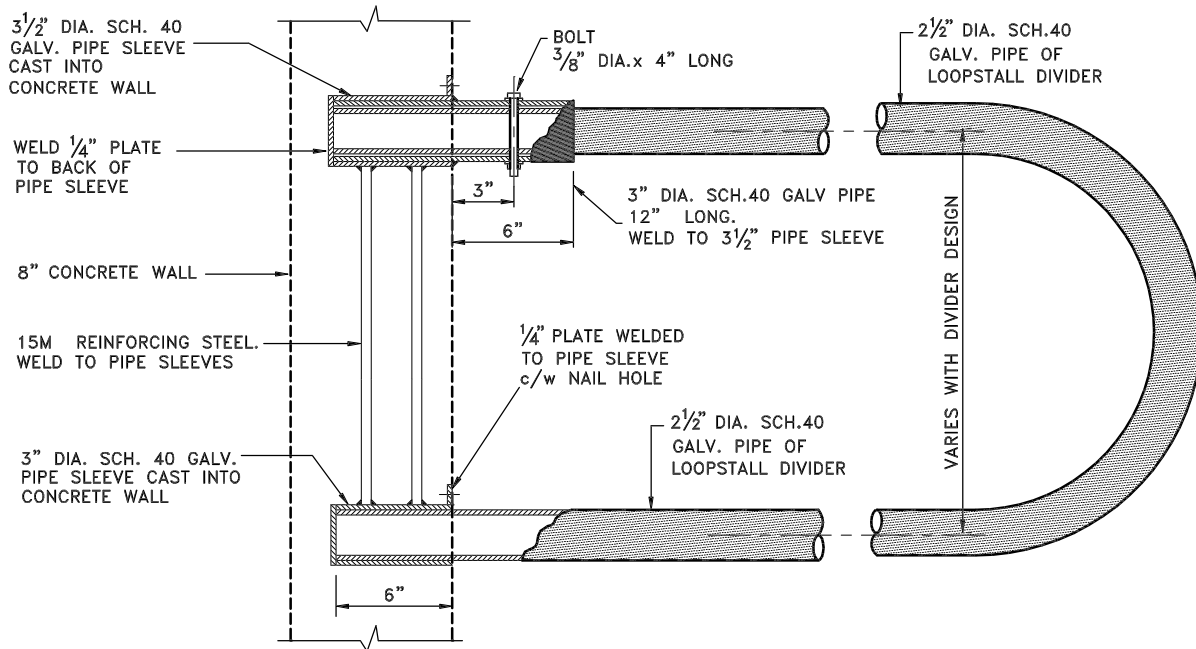
## WITH HANGING NECKRAIL, BRISKET BOARD AND WOOD PLANK BASE



# 326-20

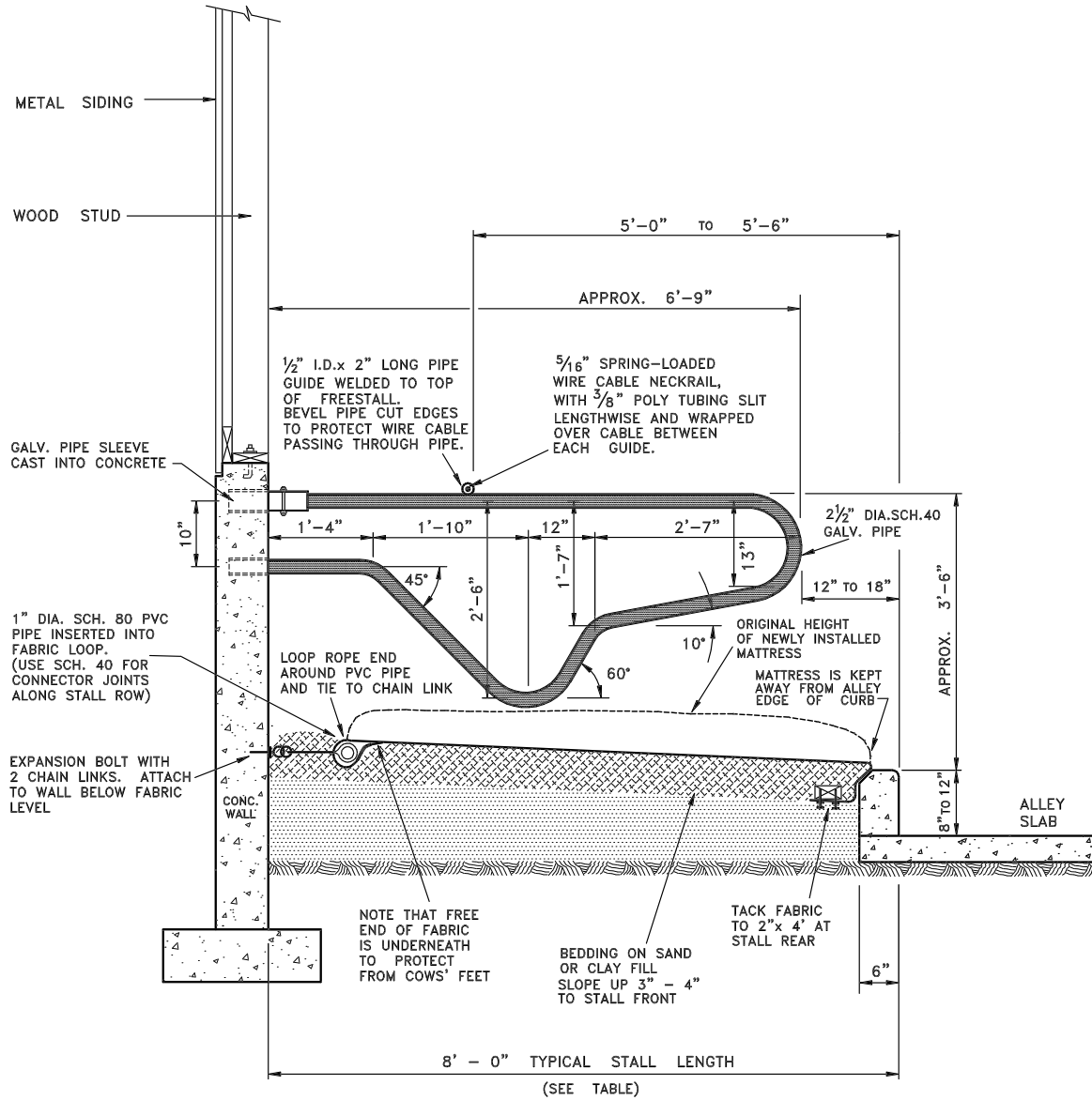
## PIPE SLEEVE CONNECTION

### FOR LOOP STALL DIVIDER



# MICHIGAN STYLE DIVIDER

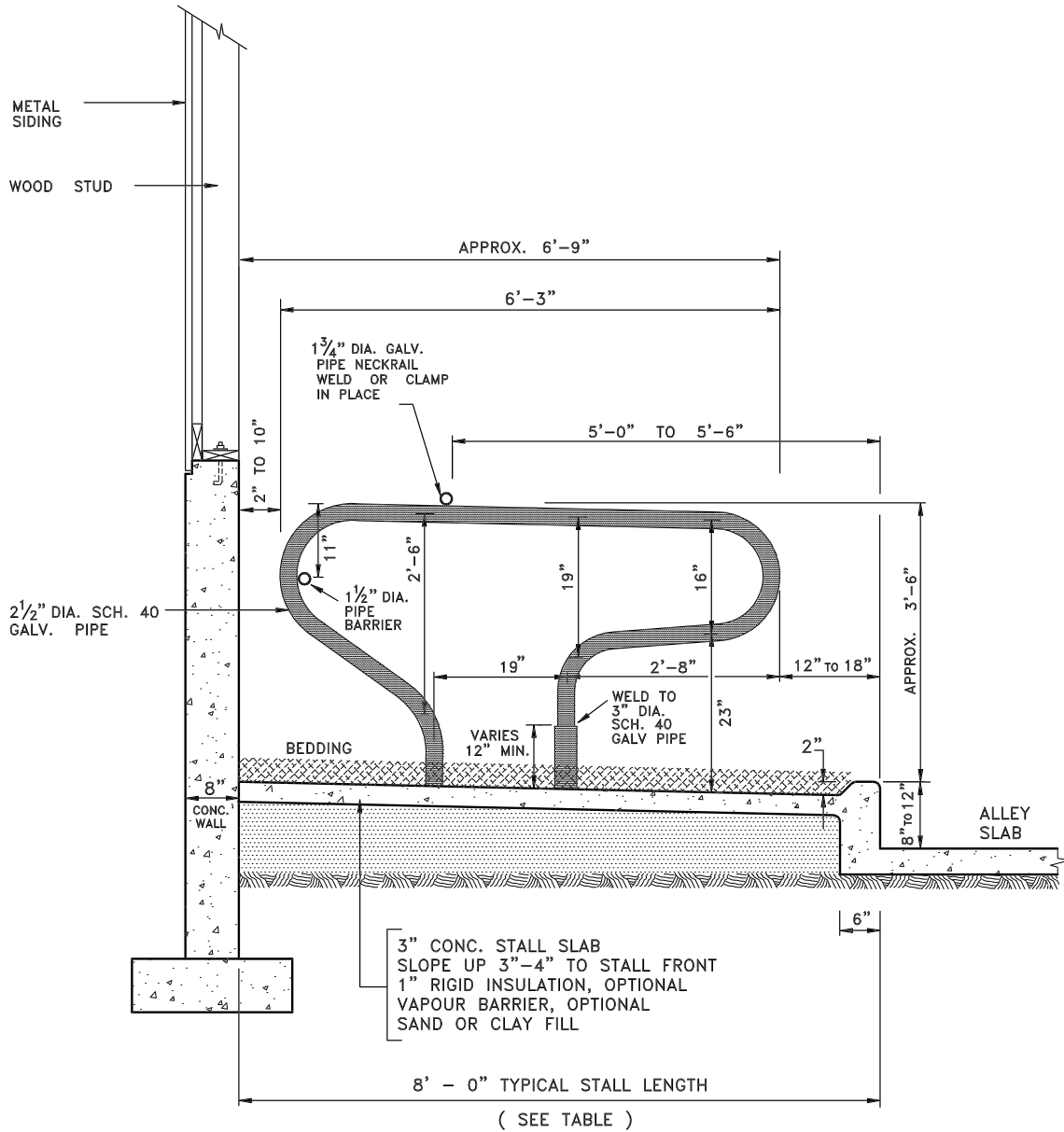
## WITH MATTRESS PAD AND SHEATHED CABLE NECKRAIL



# 326-20

## MUSHROOM STYLE DIVIDER

### WITH CONCRETE BASE AND SOLID PIPE NECKRAIL



# POST STYLE DIVIDER

## WITH CONCRETE BASE AND ADJUSTABLE PIPE NECKRAIL

