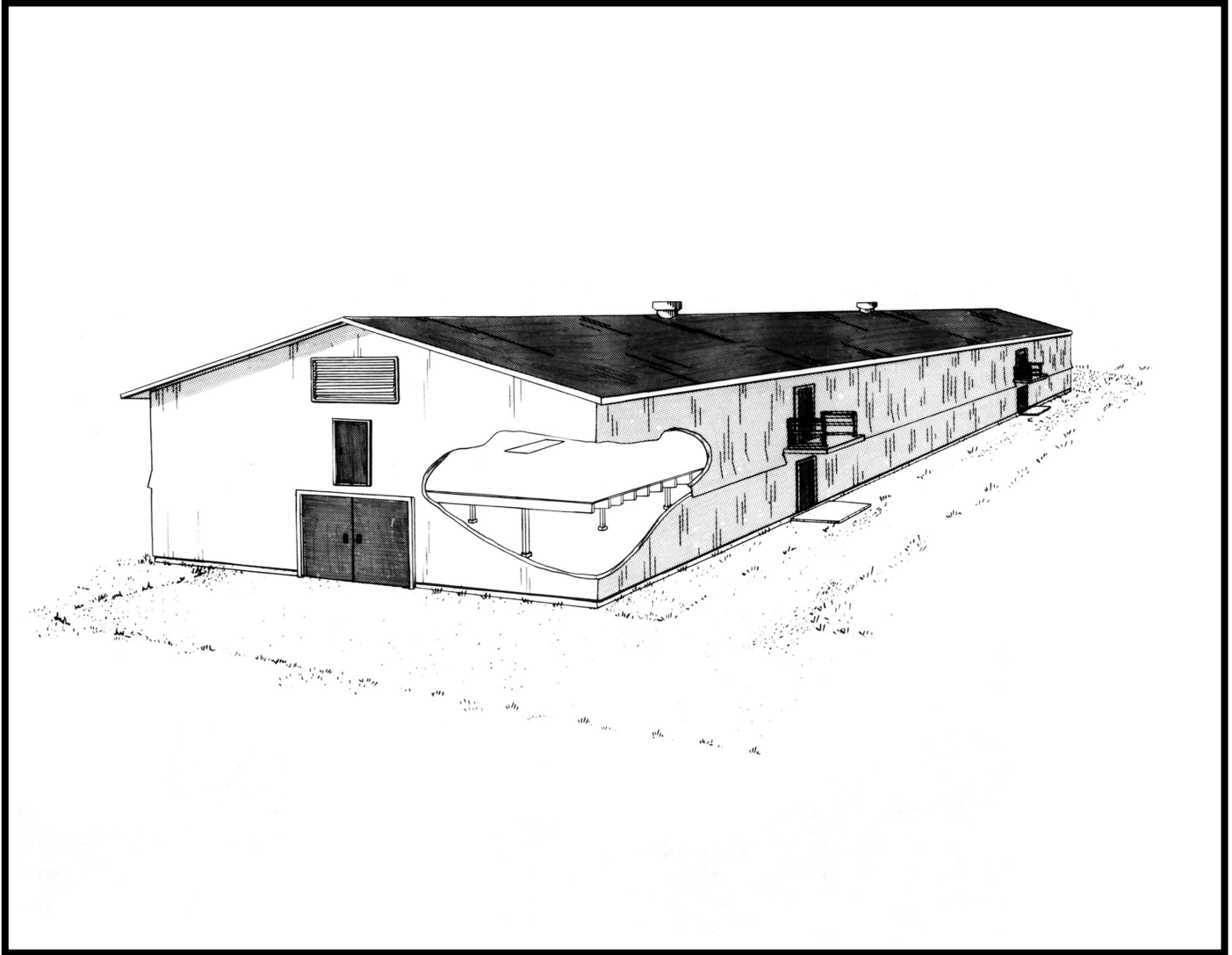




# TWO STOREY BROILER HOUSE



## 342-01

### BROILER BARN

#### 40'-0" WIDE, TWO STOREY

This is a detailed plan set for a two storey broiler barn. The 40 ft. wide building can be built any length to accommodate the number of birds being housed.

The plan shows two construction options using typical floor joists supported by posts and beam or alternatively, a manufactured engineered parallel chord truss with clear span.

#### VENTILATION

The building is completely environmentally controlled. Ventilation fans are located in banks along one side of the building.

Perimeter type, adjustable air inlets are provided on both sides of the building. Ventilation rate provides .1 cfm @ 1/8" sp per bird continuous and up to 5 cfm @ 1/8" sp per bird on thermostats.

#### MANURE HANDLING

The sawdust manure-pack is allowed to build up and need only be removed between batches of birds. Manure is dry enough to allow removal from the building with tractor and front end loader. A small garden tractor and scraper can be used on the second floor. (See notes on the cross-section).