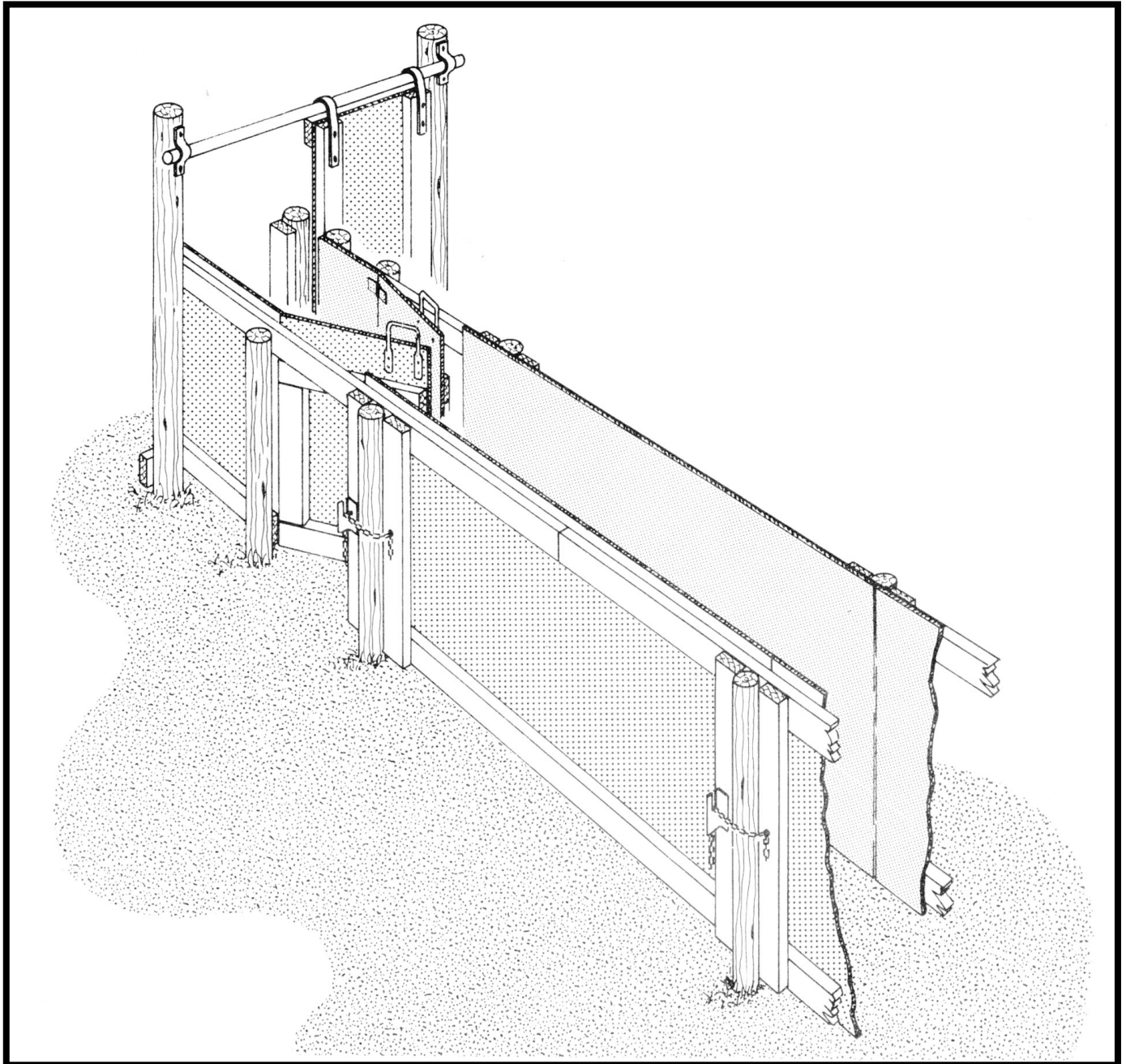


# WORKING CHUTE



DEVELOPED BY CANADA PLAN SERVICE

## WORKING CHUTE

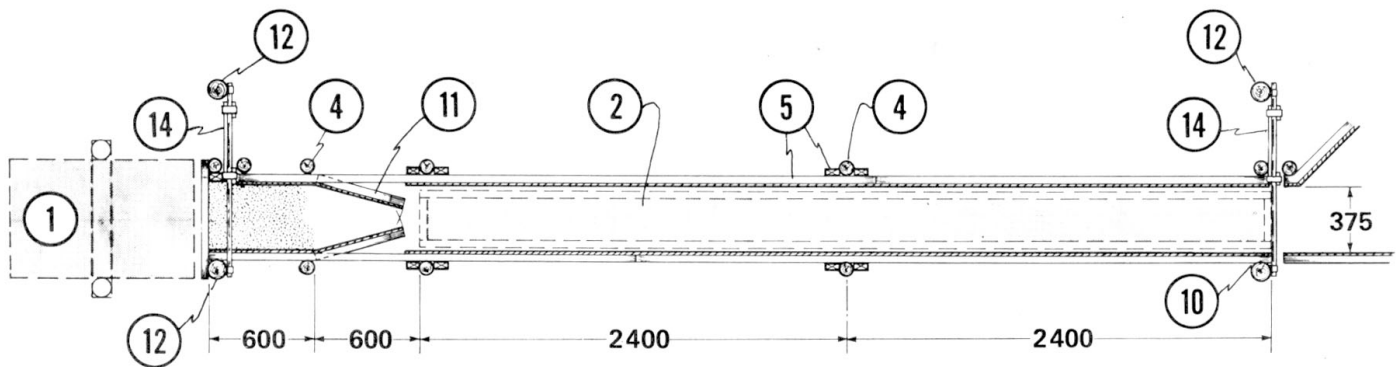
CPS

PLAN M4812 REVISED 81:12

This sheep working chute is one component of a corral system for sorting, weighing, spraying and other essential management operations. Fitted into the corral, it follows a crowding pen so the flock can be gently funneled through the chute. Sliding blocking gates at entrance and exit ends of the working chute allows control of sheep traffic, a pair of sorting gates hinged in the sides of the chute provide for rapid three-way sorting.

For treatment of foot disorders, add watertight plywood footbath. For handling lambs, the chute width can be reduced from 375 to 275 mm by adjusting one or two walls of the chute; this is done by adding filler blocks between the fencing and the posts, and re-adjusting the chain fasteners to suit.

All fence and crate components are designed to be removable from the permanent posts, for storage or transport to other sheep working sites.



1. weighing crate and scale frame -see Leaflet 353-07 ( CPS M-4814)
2. removable footbath; made from 12.5 mm plywood and 38 x 184 mm planking, caulk all joints before nailing with galv. nails
3. adjustable chute option
4. 75 mm top diam. x 1500 mm pressure-treated post
5. 38 x 89 mm vertical and horizontal framing
6. 9.5 mm plywood wall
7. 38 x 89 mm or 89 x 89 mm spacer
8. securing chain; bolt one end to frame (5) , hook other end into slot in (9)
9. 6 x 45 x 45 mm steel angle, cut slot in one leg, bolt other leg to (5)
10. adjustable chute fixed at this point
11. 9.5 mm plywood sorting gate on 38 x 89 mm frame; 2 – 75 mm butt hinges bolted to framing, handle bent from 13 mm steel rod, ends flattened and drilled for 4 – M6 bolts
12. 100 mm top diam. x 2400 mm pressure-treated post
13. 1" pipe welded to 50 x 125 mm strap, lag screw to (12) , grease to allow (14) to slide freely
14. blocking gate; 9.5 x 450 x 1150 mm plywood (or use 18.5 mm plywood without frame), 38 x 89 x 1150 mm vertical framing on entrance side and 38 x 89 x 450 mm horizontal top and bottom framing on exit side
15. 5 x 38 x 150 mm steel strap hangers, bend to fit around (13) and bolt to (14)
16. 38 x 89 mm vertical blocking at exit side of (14)
17. 38 x 89 mm earth stop, at grade, for earth ramp
18. dip bottom of all fence members in wood preservative
19. round and smooth all edges exposed to sheep

