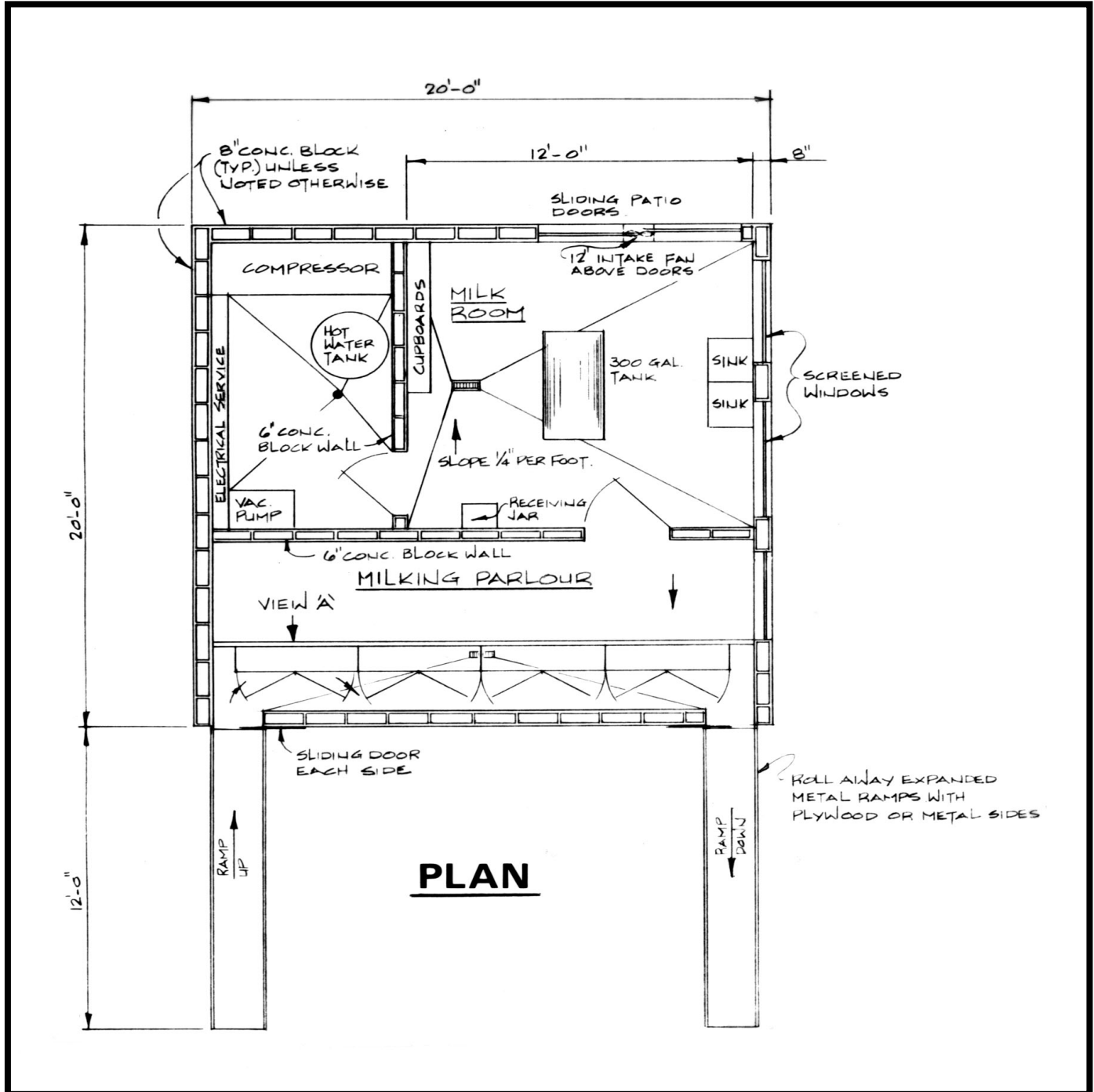
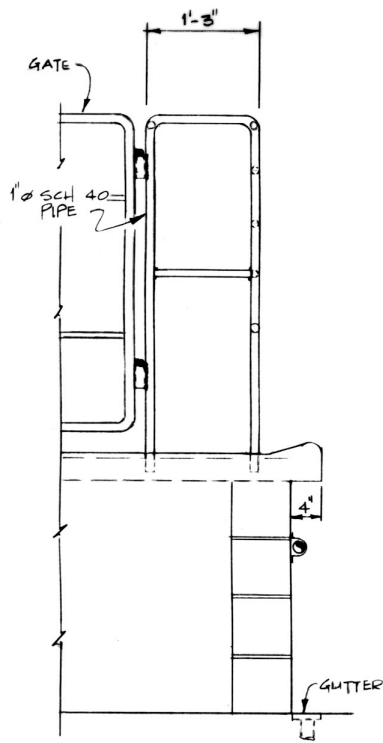
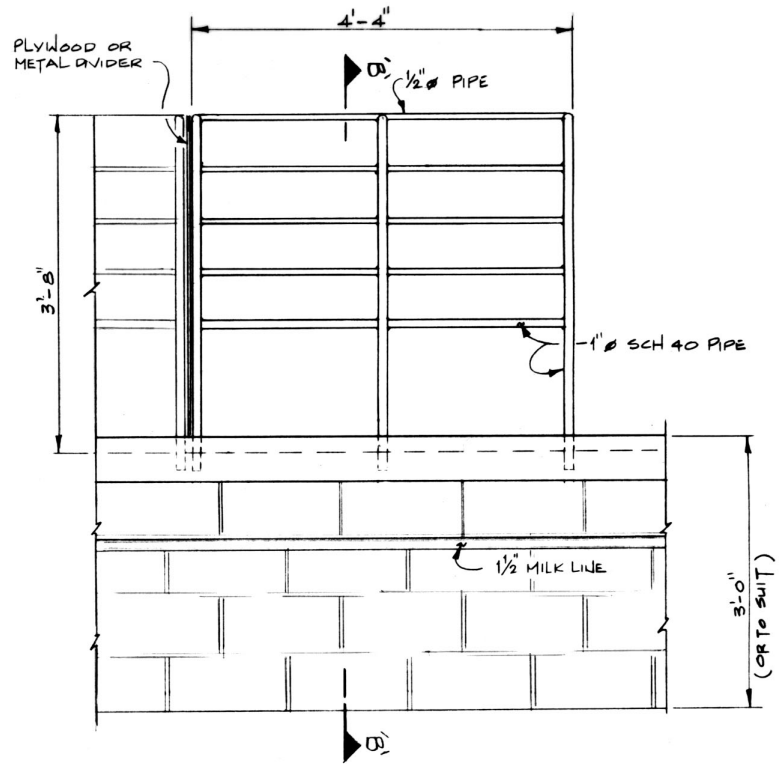


DAIRY GOAT MILKING FACILITY





SECTION B-B



VIEW - 'A'

355-01

GOAT MILK ROOM AND PARLOUR

For large herd of 100 and up it is more efficient to use a modified form of cow milking parlour. For smaller herds a conventional milking platform 14" high will suffice.

The milk room and parlour should be constructed to conform to the Milk Act. Consult your local Dairy Inspector, British Columbia Ministry of Agriculture, Food and Fisheries, before building.

This leaflet shows a suggested milk room and parlour. The platform height should be built to suit individual requirements, generally level with the top of the leg and grounded with the floor as Plan No. 324.5-1 shows.

These plans are available from the B.C. Ministry of Agriculture, Food and Fisheries, Resource Management Branch, Abbotsford, B.C.