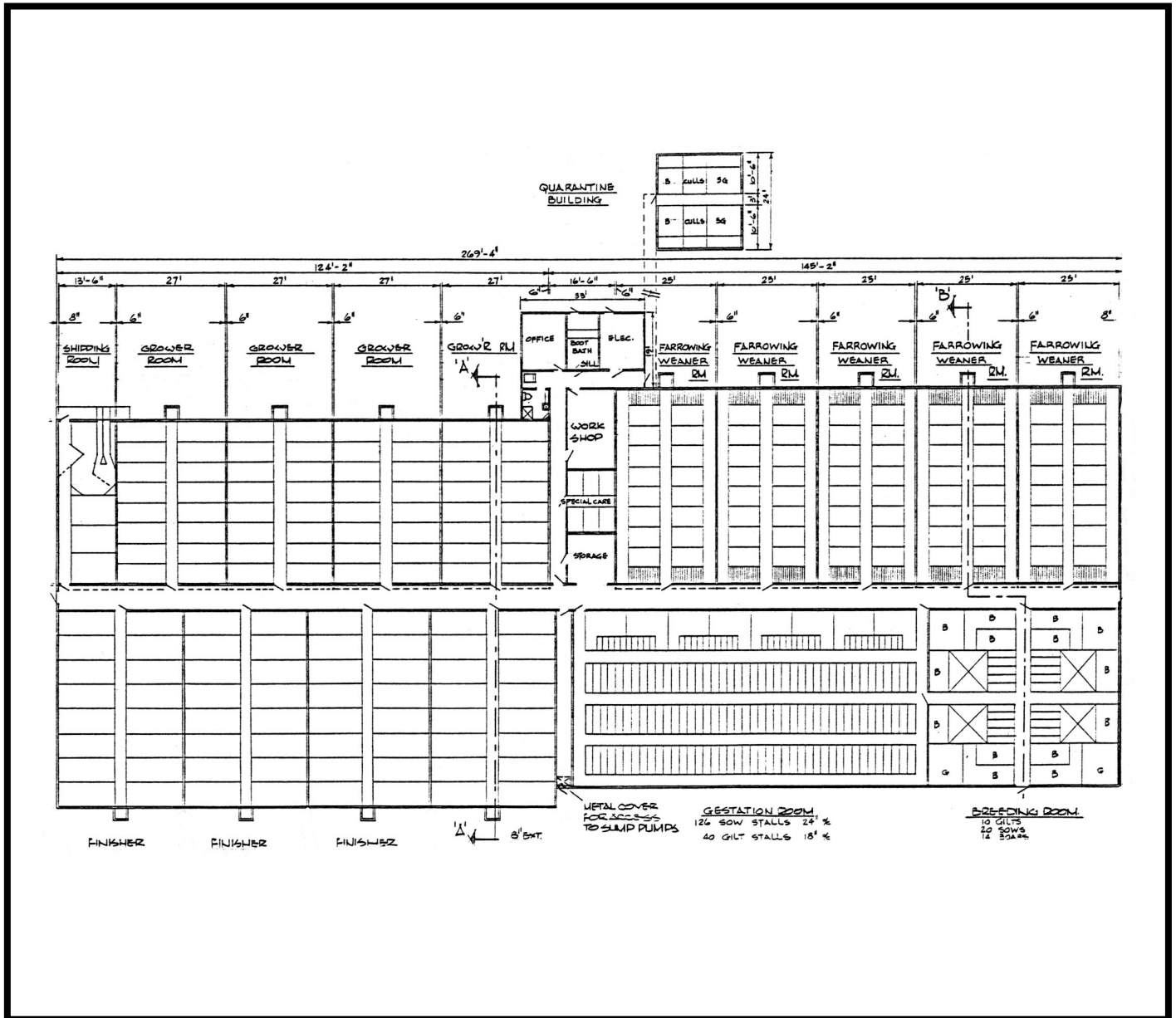


# FARROW - TO - FINISH SWINE BARN 200 SOW UNIT



**362-05**

**FARROW-TO-FINISH SWINE BARN  
200 SOW UNIT**

This conceptual plan shows a unique layout for a 200 sow operation containing all production and breeding rooms under one roof. The 27,000 sq. ft. building has five farrowing-weaner rooms, each with 16 convertible

crates. There are four each of growing rooms and finishing rooms. A 6 foot wide central hallway running the entire length of the building facilitates materials and livestock handling.