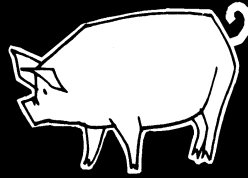




BRITISH
COLUMBIA

Ministry of Agriculture, Food and Fisheries

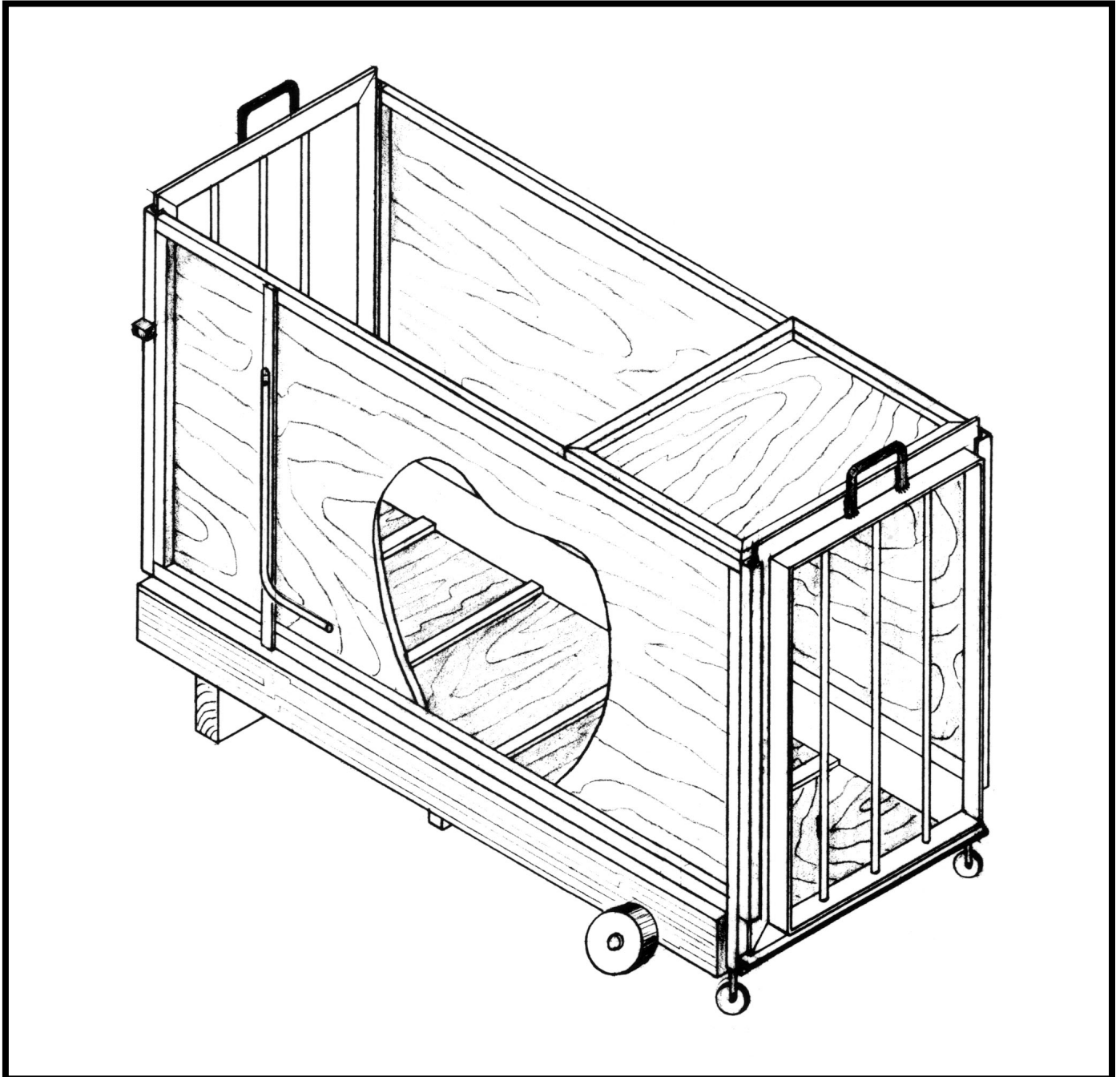
Agricultural Building Systems Handbook

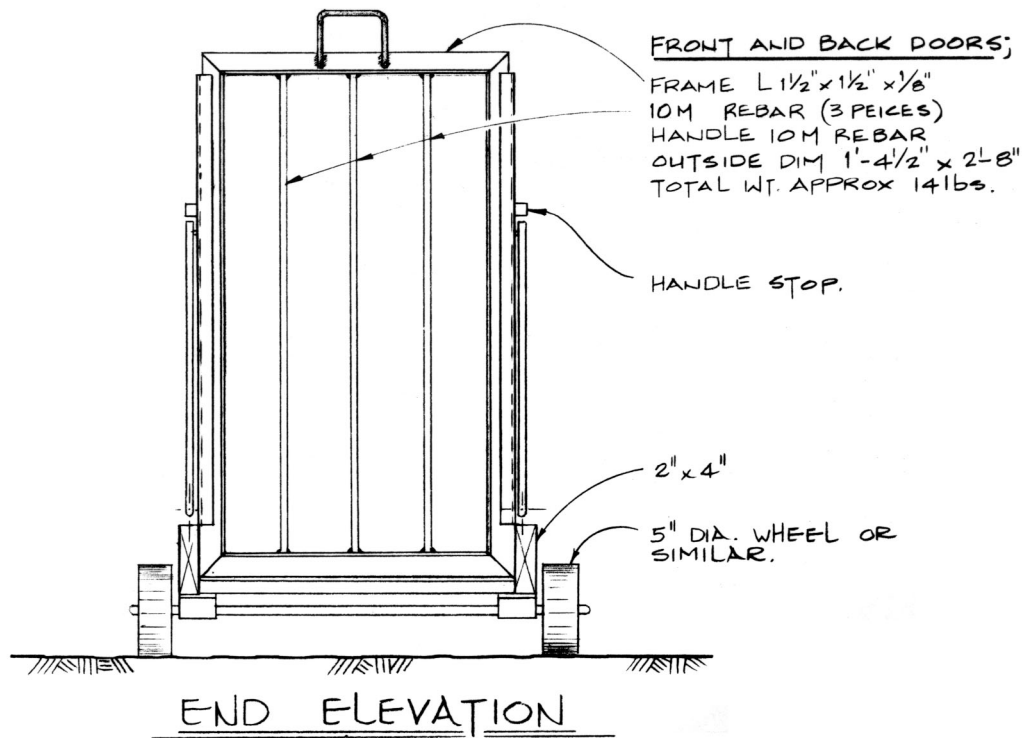


PLAN

362-64

HOG PROBING CRATE





362-64

HOG PROBING CRATE

This holding crate was developed specifically to be used for probing hogs by use of an ultra-sonic machine. It is used in conjunction with a weighing facility.

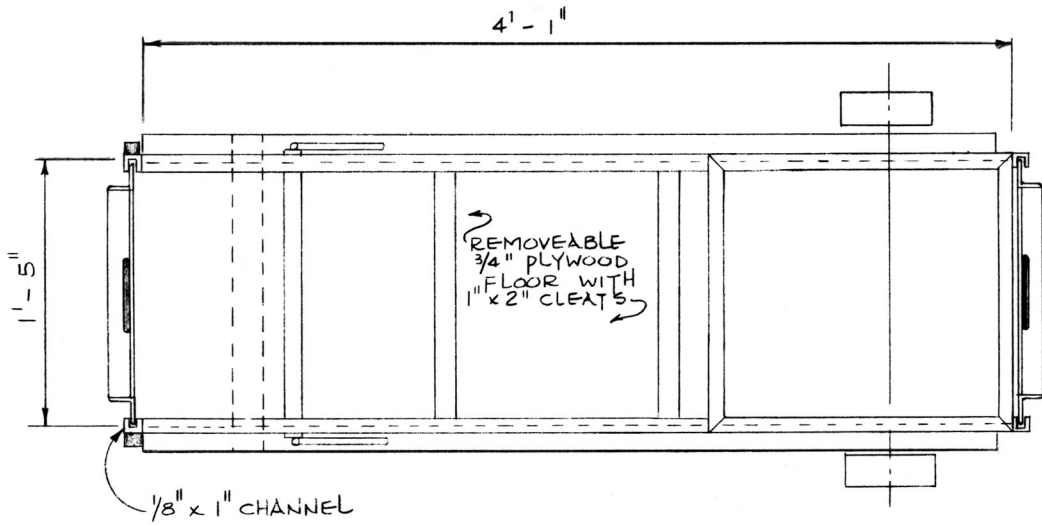
It was used at Colony Farm for a number of years and modified to its present design for practical and convenient use.

It is a sturdy crate with a base framed with 2" x 4" lumber. The remainder of the crate is made from 1" x 1" square tube or 1/8" x 1" channel. The floor, sides, and doors are made of plywood.

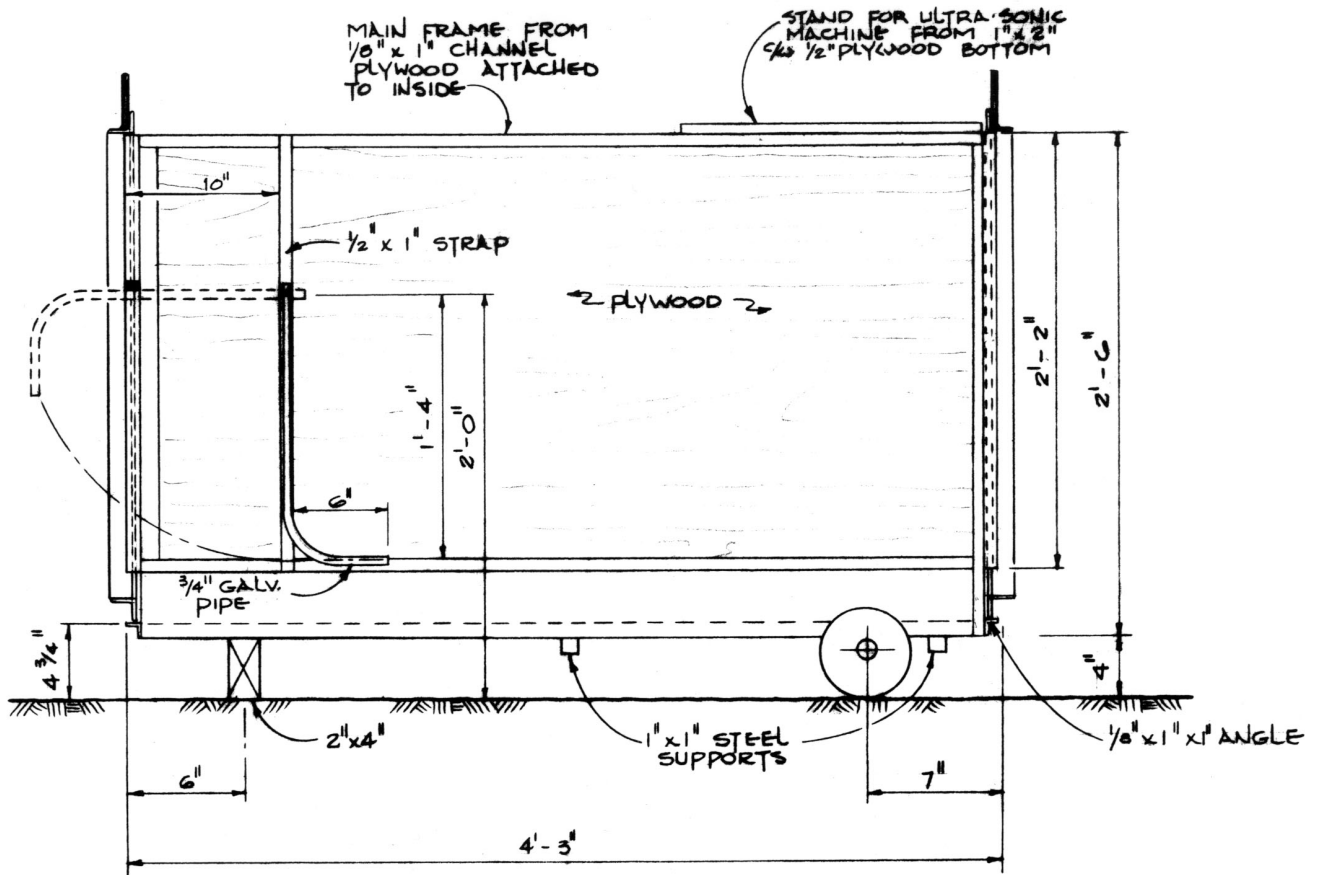
The entrance door is made of solid plywood and is the drop-in type. The outlet door is made of plywood with the centre section made of wire. This door can be either a hinged or drop-in type. The screen allows the hogs to see out and assists in keeping them calm.

The sides are solid plywood so that the hogs cannot see out.

Length and width is designed to handle hogs of market weight. Size is found to be convenient to prevent too much movement of the hog.



PLAN



SIDE ELEVATION