

Farm Structures FACTSHEET



BRITISH
COLUMBIA

Ministry of Agriculture and Food

Order No. 305.800-1
Agdex: 790
August 1992

HAY FLOOR SAFETY FENCE

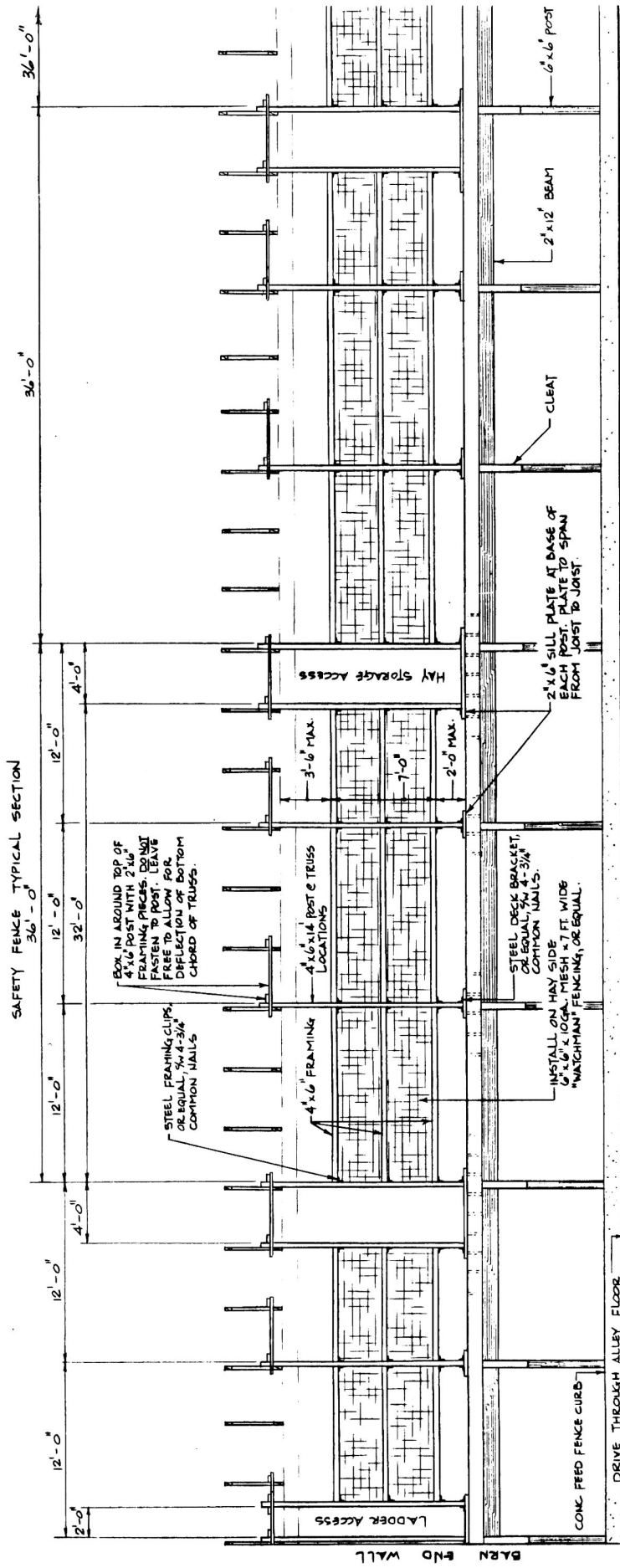
According to reports from the Workers' Compensation Board, several serious injuries have occurred when farm workers have fallen from the hay floors of drive-through dairy barns onto the hard concrete alley below. These accidents occur when a bale-tie breaks and the worker falls backwards or when the worker loses his footing while working on top of the stack or when a worker steps on a bale near the edge of the hay floor and it is not interlocked with the stack.

Extra caution is called for when working on the hay floor and the worker must be constantly aware of where he is in relation to the edge at all times.

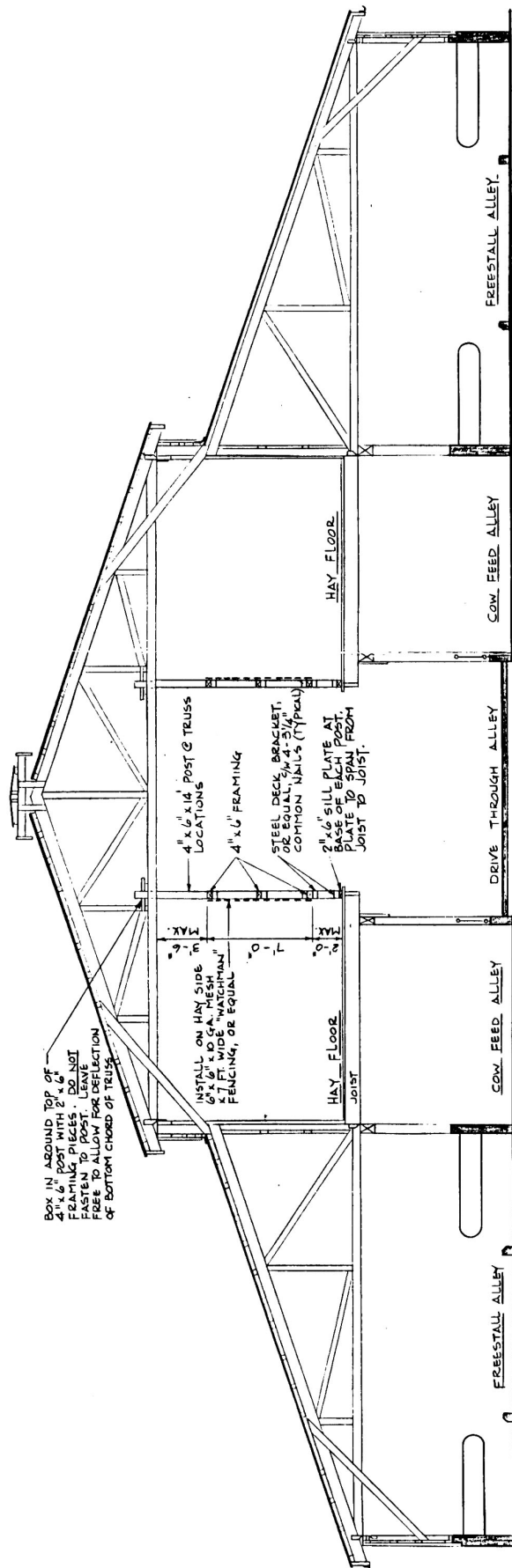
The Workers' Compensation Board and the Resource Management Branch strongly recommend that all dairy producers with this type of open hay-floor install a safety fence according to the detail shown in the accompanying plan. (Plan No. 305.800-1)

The fence is designed so that it gives the worker full security from falling off the floor into the drive-through alley and it will retain the stacked hay so that it cannot fall. The provision of four-foot wide openings every 36 feet allows for the placement of hay elevators for loading the floor. Elevators can be raised in these openings as the stack rises. The two-foot gap below the wire allows the worker to kick bales off the floor.

The fence is constructed of 4 x 6 framing secured together with framing clips. The wire mesh can be purchased in rolls up to seven feet wide and is secured with heavy duty, nailed staples. Note that the top of the vertical members are framed into the trusses so that the trusses can deflect without interference from the member. The bases of the vertical members are fastened to the hay-floor with heavy-duty post brackets. The vertical members are normally spaced at 12-foot centres to match the spacing of the building posts to retain an orderly appearance inside the barn.



HAY FLOOR SAFETY FENCE
 (FOR OPTIONAL HAY FLOOR)
FRONT ELEVATION



CROSS - SECTION

FOR FURTHER INFORMATION CONTACT

John Luymes, Farm Structures Engineer
 Phone: (604) 556-3114
 Email: John.Luymes@gems7.gov.bc.ca

RESOURCE MANAGEMENT BRANCH

Ministry of Agriculture and Food
 1767 Angus Campbell Road
 Abbotsford, BC CANADA V3G 2M3