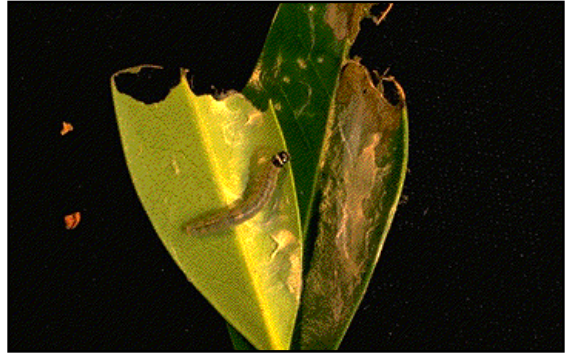


## BUD MOTH

(*Rhopobota naevana*)

Bud moths are 6 mm long, grey, and mottled brown. Larvae are dark olive green with black heads, hatching in late April to early May. Larvae roll leaves and feed on buds and terminal growth of hosts. Mature larvae drop from foliage to the soil to pupate. Female moths emerge in July and August to lay flat eggs under leaves.



Bud Moth on *Ilex*