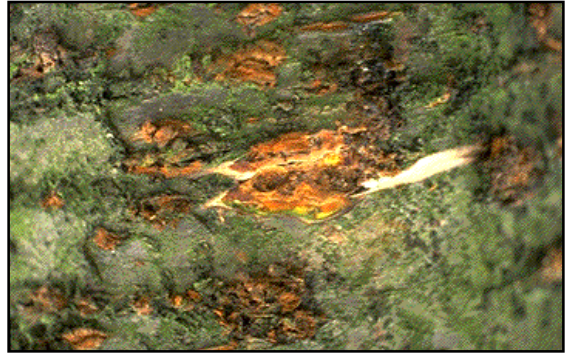


CHERRY BARK TORTRIX *(Enarmonia formosa)*

Caterpillars tunnel under the bark and show a preference for scar tissue from graft unions. Frass and gum-like resin can be observed at the entrance of the tunnels. The larvae overwinter and pupate in the spring under the bark. Moths have dark brown forewings with yellow-orange lines and begin emerging in May.



Cherry Bark Tortrix



Cherry Bark Tortrix