

LACE BUG

(*Stephanitis pyrioides*)

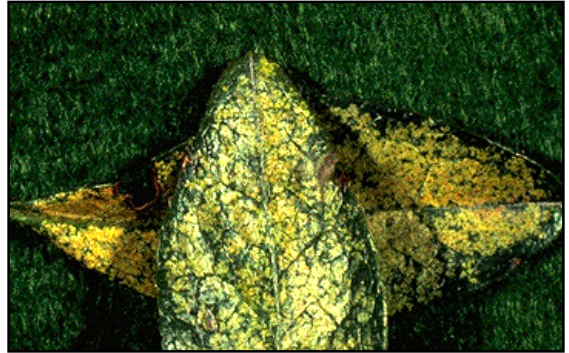
Cause varnish-like spots on undersides of leaves similar to those caused by leafhoppers. (See Leafhopper.) Brown patches of black droplets, as well as shed skins can be seen when they are present. Overwintering occurs as eggs, which are inserted into veins or stuck onto leaves. They hatch in May with two or more generations emerging throughout the summer.

Hosts

Azalea

Prunus

Rhododendron



Lacebug Damage on Azalea

A. Antonelli