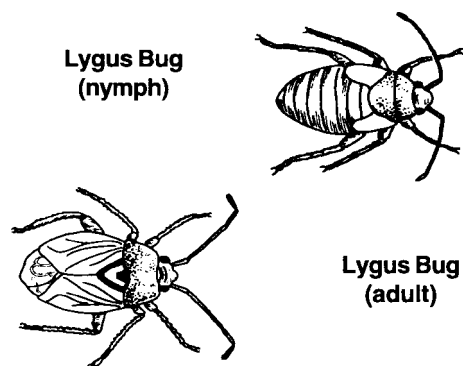


## LYGUS BUG

(*Lygus lineolaris*)

### Description

Lygus bug adults, usually 7 mm long and half as wide, are broad, flattened, and oval-shaped with a small projecting head. They range in colour from yellowish-green to reddish-brown and are covered with small, irregular, yellow, reddish-brown and black blotches. They attack swollen, opening buds, injecting a toxin, distorting the emerging foliage, deforming roots, dwarfing and pitting fruit, and ruining flowers.



### Life Cycle

Eggs are laid mainly in the stems and on flowers of herbaceous plants, hatching in 1 to 4 weeks. They mate soon after emerging and begin laying eggs immediately, inserting eggs into plant. In mid-summer, a life cycle may be completed in about 25 days, with 2 to 5 generations being completed per year, depending on weather conditions. Lygus populations overwinter as adults in the crowns of plants and plant debris, becoming active with warm spring weather.



Lygus Bug Damage

G. Shrimpton



Lygus Bug

G. Shrimpton