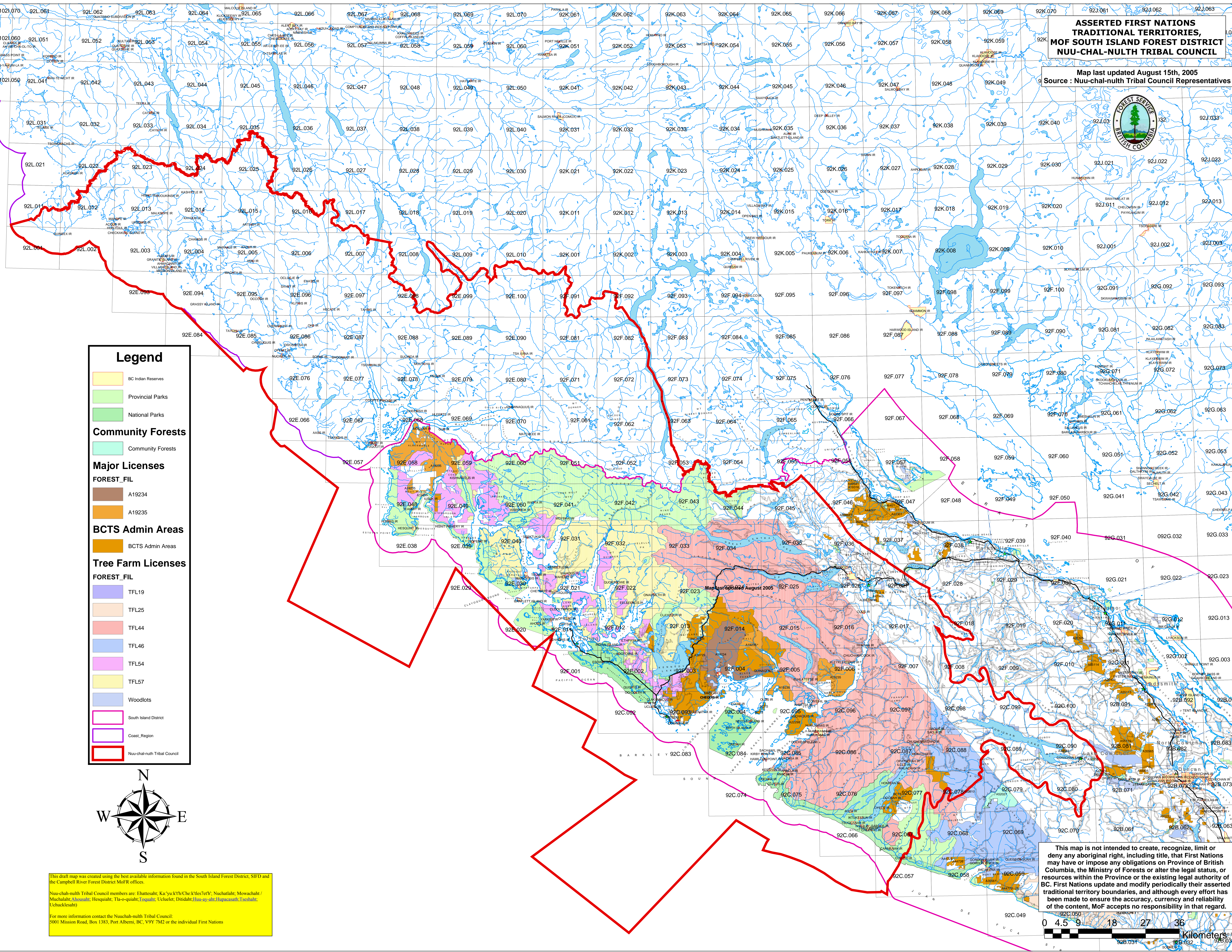


**ASSERTED FIRST NATIONS,
TRADITIONAL TERRITORIES,
MOF SOUTH ISLAND FOREST DISTRICT
NUU-CHAL-NULTH TRIBAL COUNCIL**

Map last updated August 15th, 2005
Source : Nuuchal-nulth Tribal Council Representatives



Legend

- BC Indian Reserves
- Provincial Parks
- National Parks

Community Forests

- Community Forests

Major Licenses

FOREST_FIL

- A19234
- A19235

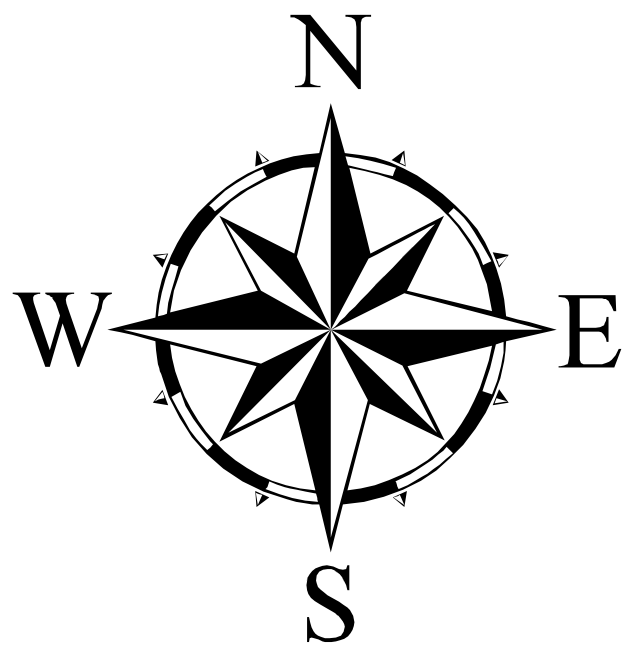
BCTS Admin Areas

- BCTS Admin Areas

Tree Farm Licenses

FOREST_FIL

- TFL19
- TFL25
- TFL44
- TFL46
- TFL54
- TFL57
- Woodlots
- South Island District
- Coast_Region
- Nuuchal-nulth Tribal Council



This draft map was created using the best available information found in the South Island Forest District, SIFD and the Campbell River Forest District MoFR offices.

Nuu-chal-nulth Tribal Council members are: Ehatesaht, Ka'yuk'k'Ch, Che'k'les'7e7b', Nuchataht, Mowachah / Muechah, Ahoosah, Hesquiaht, Tha-o-quaht, Toquaht, Uchelelet, Dita'dah, Hnu-ay-ah, Hupacasah, Tseshaht, Uchucklesah.

For more information contact the Nuuchal-nulth Tribal Council:
5001 Mission Road, Box 1383, Port Alberni, BC, V9Y 7M2 or the individual First Nations

This map is not intended to create, recognize, limit or deny any aboriginal right, including title, that First Nations may have or impose any obligations on Province of British Columbia, the Ministry of Forests or alter the legal status, or resources within the Province or the existing legal authority of BC. First Nations update and modify periodically their asserted traditional territory boundaries, and although every effort has been made to ensure the accuracy, currency and reliability of the content, MoF accepts no responsibility in that regard.

