

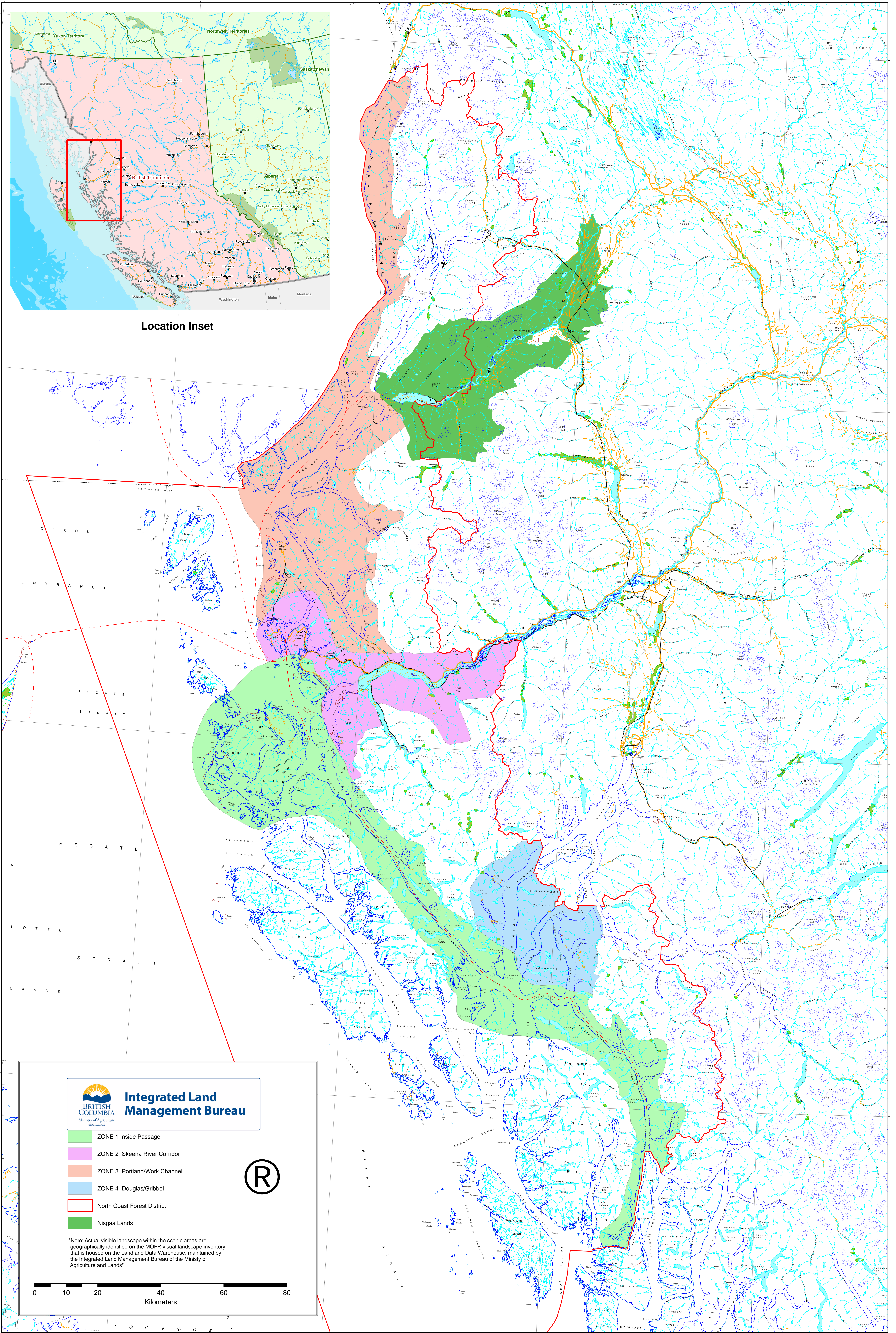
Amended Scenic Areas North Coast Forest District - May 18, 2006



Ministry of Forest and Range

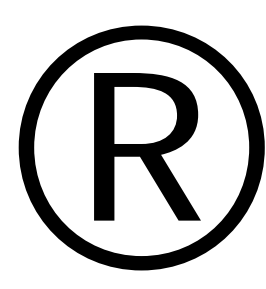


Location Inset



 **Integrated Land Management Bureau**
Ministry of Agriculture and Lands

- ZONE 1 Inside Passage
- ZONE 2 Skeena River Corridor
- ZONE 3 Portland/Work Channel
- ZONE 4 Douglas/Gribbel
- North Coast Forest District
- Nisga'a Lands



*Note: Actual visible landscape within the scenic areas are geographically identified on the MOFR visual landscape inventory that is housed on the Land and Data Warehouse, maintained by the Integrated Land Management Bureau of the Ministry of Agriculture and Lands

