

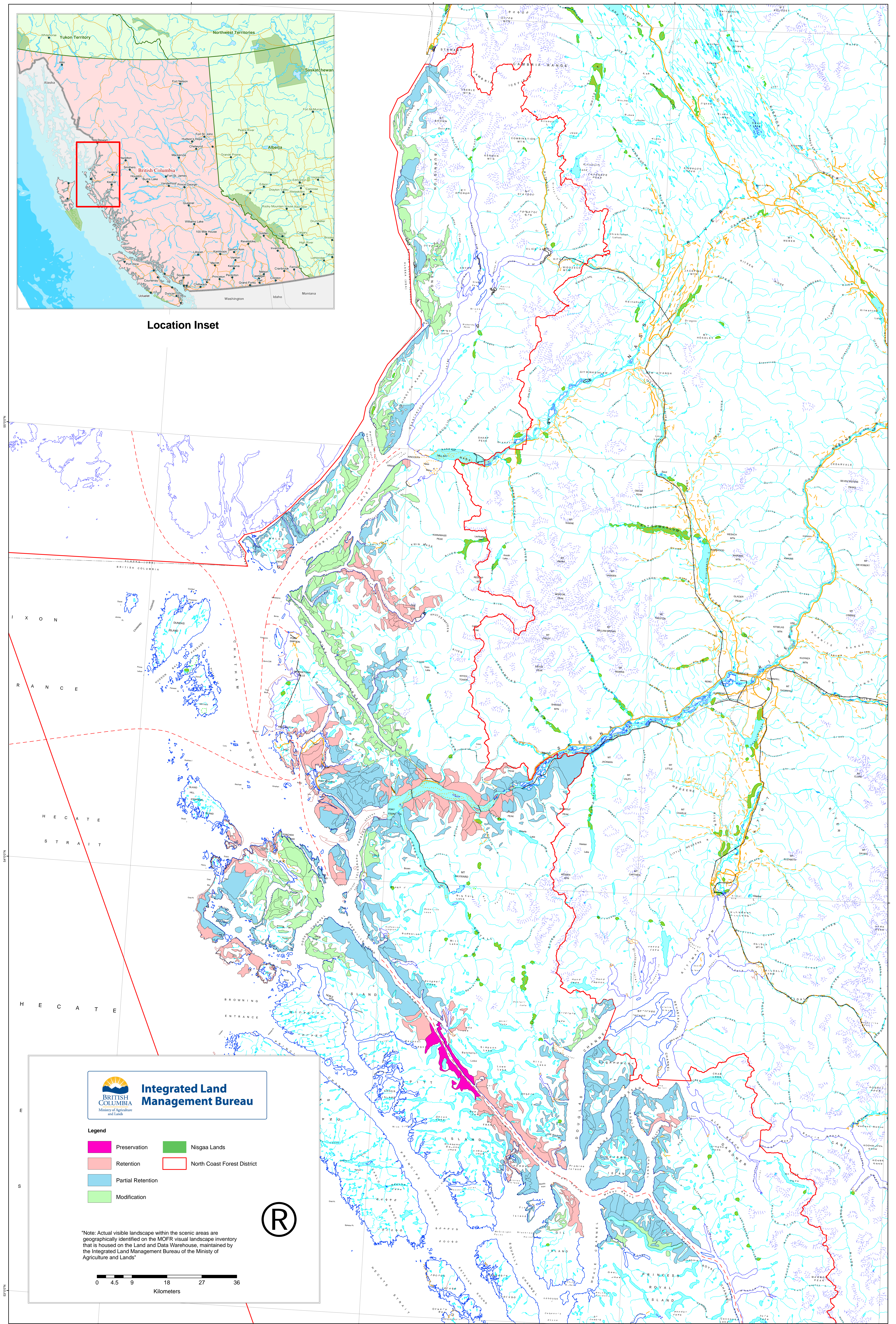
Established Visual Quality Objectives North Coast Forest District - May 18, 2006



Ministry of Forest and Range



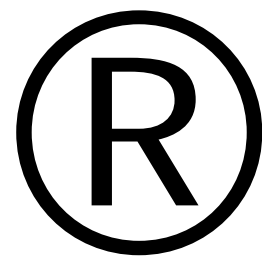
Location Inset



Integrated Land Management Bureau
Ministry of Agriculture and Lands

Legend

- Preservation
- Nisga'a Lands
- Retention
- North Coast Forest District
- Partial Retention
- Modification



Note: Actual visible landscape within the scenic areas are geographically identified on the MOFR visual landscape inventory that is housed on the Land and Data Warehouse, maintained by the Integrated Land Management Bureau of the Ministry of Agriculture and Lands

