

## **8.4 Access Indicator 3. Wilderness Lakes<sup>1</sup>**

### 8.4.1 Measure:

Number/location of candidate “wilderness lakes”, as defined by the Bulkley LRMP and further qualified in the draft Bulkley TSA Strategic Recreation Study (Harris, 2001).

### 8.4.2 Background:

The LRMP identified the need to retain lakes (i.e. “wilderness lakes”) in primitive or semi-primitive settings based on Resource Management Zone objectives, biophysical attributes and the Lake Classification Guidebook.

### 8.4.3 Results and Discussion:

Table 16 provides details of candidate wilderness lakes, and Figure 40 shows their location. Candidate wilderness lakes (28 total) were selected from approximately 309 remote lakes after a number of WLAP and MOF-led technical processes that considered a combination of evaluation criteria (some given more weighting than others in the final selection process):

- lake is more than 1 km from a road, with foot trail access longer than 2 km or no trail
- lake exceeds 10 hectares in size
- lake is within a primitive or semi-primitive Recreation Opportunity Spectrum class, according to Bulkley’s recreation inventories
- lake is rated in Bulkley recreation inventories as moderate or higher value for:
  - provision of primitive angling opportunities
  - wilderness recreation opportunities sought after by local residents and adventure tourists including hiking, wildlife viewing, scenic viewing, and undisturbed natural settings
- lake has a moderate or higher Attractiveness Rating based on the Harris (2001) system that considers diversity of physical features, range of possible recreation opportunities, existing facilities, and ease of access.
- lake has known recreation opportunities based on discussions with users and Harris’ personal knowledge
- lake has significant wildlife viewing or fishing values, or bears sensitive fish stocks, based on lake inventory reports and WLAP technical advice. See Bulkley LRMP Higher Level Plan

The 28 candidates resulting from the above selection process appear to be a sufficient cross-section of valuable wilderness lakes to address the LRMP objective. Remaining remote lakes are subject to the protection currently provided through legislation (i.e. lake-shore harvesting buffers) and in many cases LRMP zonation, which is deemed adequate.

The intent is that designated wilderness lakes be subject to future Landscape Unit Plan forest management provisions focused on maintaining their wilderness setting:

- no new road access, snow roads, or trails within 1 km
- permanent deactivation/revegetation of approved or existing roads upon completion of tree planting.
- manage to a retention visual quality objective, using the lake centre as a viewpoint.

Current forest management practices (i.e. adherence to Operational and Site Planning Regulation lakeshore management area specifications; protection through LRMP zones) are adequate to

---

<sup>1</sup> Note that there are no official wilderness lakes to date in Bulkley TSA.

maintain the wilderness setting for most of the listed lakes; exceptions are noted in Table 16. Future mineral exploration activities also have the potential to disturb wilderness settings.

Table 16 – Candidate Wilderness Lakes

Lake Name	BCGS mapsheet	<i>Location (Lat/Long)</i>	<i>Wilderness setting maintained by:</i>
<i>Bud</i>	93L 082	54° 50' 49"; 127° 39' 01"	Partly in CE. Also, pothole lake, not visible THLB
<i>Cerber</i>	93L 082	54° 50' 26"; 127° 36' 47"	Pothole lake, not visible THLB
<u>Coppermine</u>	93L 057	54° 33' 34"; 126° 43' 14"	<b>Part in CE, part unprotected</b>
<b>Farewell</b>	93L 057	54° 36' 06"; 126° 38' 46"	CE
<b>North Farewell</b>	93L 067	54° 36' 56"; 126° 39' 12"	CE
<b>Hilary</b>	93M 085	55° 50' 23"; 127° 08' 17"	SMZ1
<u>McQuarrie</u>	93L 057	54° 34' 32"; 126° 40' 27"	CE
<i>Mooseskin Johnny</i>	93L 044	54° 28' 09"; 127° 21' 18"	<b>Not protected</b>
<i>Netalzul Meadow Lake</i>	93M 025	55° 14' 42"; 127° 03' 24"	CE
<b>North</b>	93L 057	54° 34' 01"; 126° 42' 23"	CE
<b>South</b>	93L 057	54° 33' 43"; 126° 42' 23"	CE
<b>North Mulwain</b>	103I 100	54° 54' 05"; 128° 05' 43"	CE
Onerka	93M 096	55° 58' 32"; 126° 59' 42"	SMZ1
Silvern (north)	93L 084	54° 50' 33"; 127° 22' 39"	Well outside THLB
Silvern (south)	93L 084	54° 50' 10"; 127° 22' 57"	Well outside THLB
<u>Touhy</u>	93M 015	55° 11' 50"; 127° 04' 12"	CE
Elliot n/n <sup>2</sup>	93L 043	54° 29' 02"; 127° 35' 50"	SMZ1
Two-Bridge Lakes (west)	93L 096	54° 57' 44"; 126° 58' 28"	Park
Two-Bridge Lakes (east)	93L 096	54° 57' 15"; 126° 55' 00"	Park
Little Joe Lakes (west)	93L 086	54° 52' 25"; 126° 50' 05"	Park
Four Lakes (west)	93L 086	54° 51' 23"; 126° 49' 28"	Park
<i>Netalzul Lake</i>	93M 025	55° 16' 51"; 127° 01' 34"	CE
<u>Nichyeskwa1 n/n</u>	93M 047	55° 24' 58"; 126° 47' 30"	CE
<u>Nichyeskwa2 n/n</u>	93M 045	55° 29' 47"; 127° 01' 35"	<b>Not protected</b>
Babine n/n	93M 057	55° 31' 08"; 126° 46' 25"	Park
<u>Mero1 n/n</u>	93M 075	55° 47' 56"; 127° 06' 19"	<b>Not protected</b>
Mero2 n/n	93M 085	55° 48' 24"; 127° 04' 14"	Well outside THLB
Onerka n/n	93M 095	55° 58' 34"; 127° 00' 17"	SMZ1

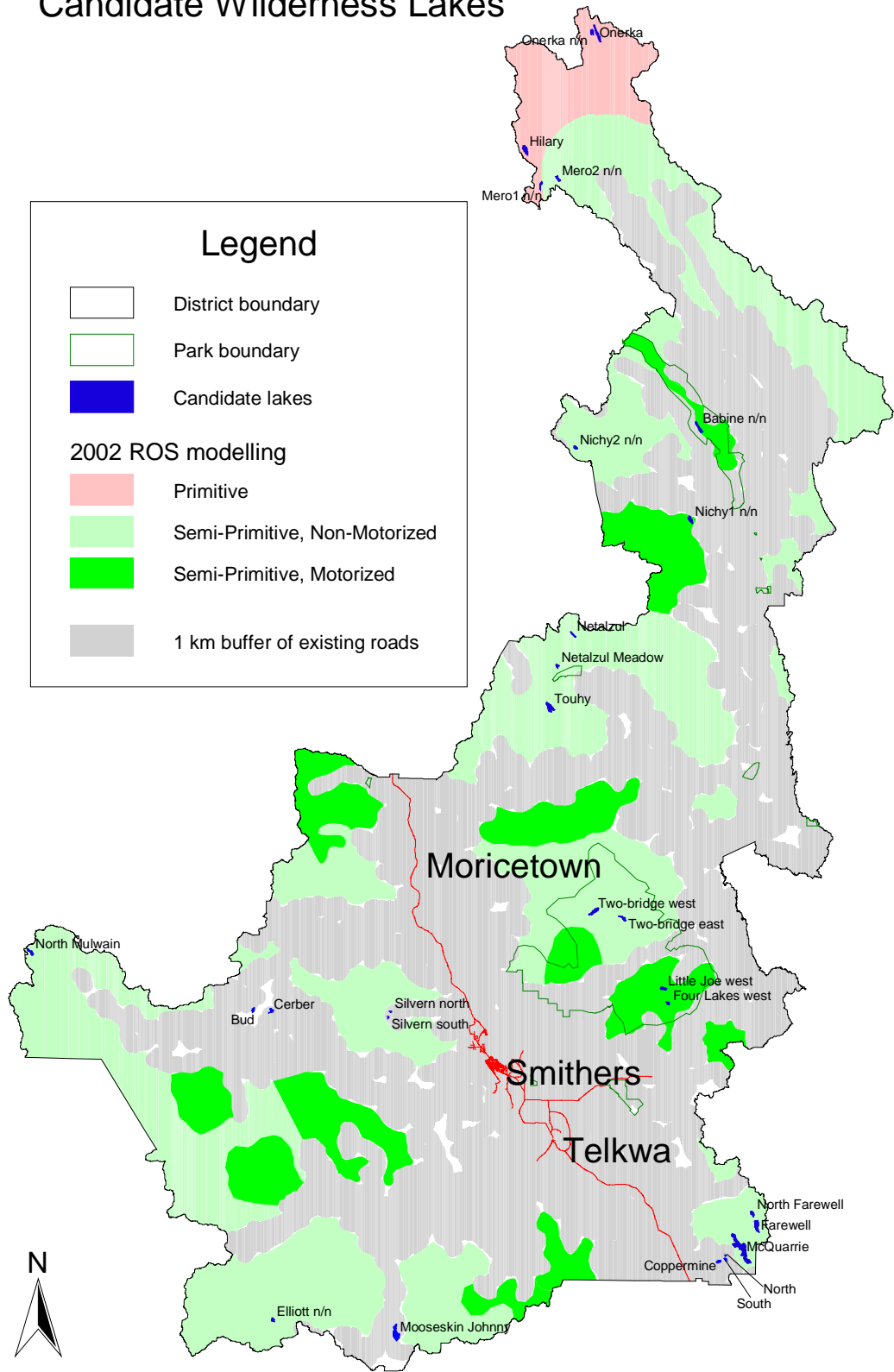
Italics = 360 degree photo mosaic available. A future weblink will be provided.

**Bold** = mosaic required

<sup>2</sup> N/n = unnamed lake

Figure 40

# Candidate Wilderness Lakes



#### 8.4.4 Data Sources:

- Draft Wilderness Lakes proposal (July 2002)
- Draft Bulkley TSA Strategic Recreation Study (February 2001)
- Bulkley LRMP
- Trails level from Cultural Heritage - Archaeological Resource Inventory (CHARI)
- 1999 update forest cover (FC1) roads, supplemented with Bulkley BCTS Road ledger (2002 update) GPS'd roads and additional roads identified in PIR's 2000-2009 Forest Development Plan.
- Forest cover lakes from 1999 update FC1 (Northwest Data Centre, Bulkley District data set)

#### Personal communications:

- Rick Keim, WLAP
- Dave Harris, Hillcrest Recreation Consulting
- James Cuell, MSRM